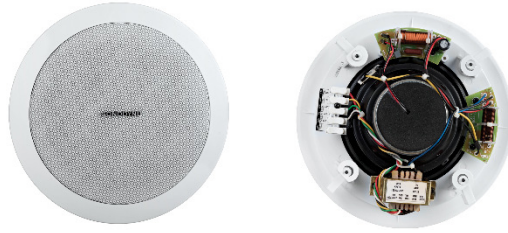


SIC 1260**Specifications**

DESCRIPTION	2 way in-ceiling speaker
TRANSDUCER COMPLEMENTS	1 x 6" coaxial speaker
SPL @ RATED POWER	100 dB @ 20 W
NOMINAL IMPEDANCE	8 Ohm
SENSITIVITY (1 W 1M)	88 dB (half space)
FREQUENCY RESPONSE	85 Hz ~ 18 kHz (-3 dB)
FREQUENCY RANGE	70 Hz ~ 20 kHz (-10 dB)
POWER HANDLING DIRECT MODE	60 W
POWER TAPS @ 70V	1.25, 2.5, 5, 10 W
POWER TAPS @ 100V	2.5, 5, 10, 20 W
COLOURS	White
OUTER DIMENSIONS (DEPTH X DIA)	110 x 237 mm
WALL/CEILING CUT-OUT	203 mm
NET WEIGHT	2.2 kg
MOUNTING OPTIONS	Ceiling mount

SONODYNE®