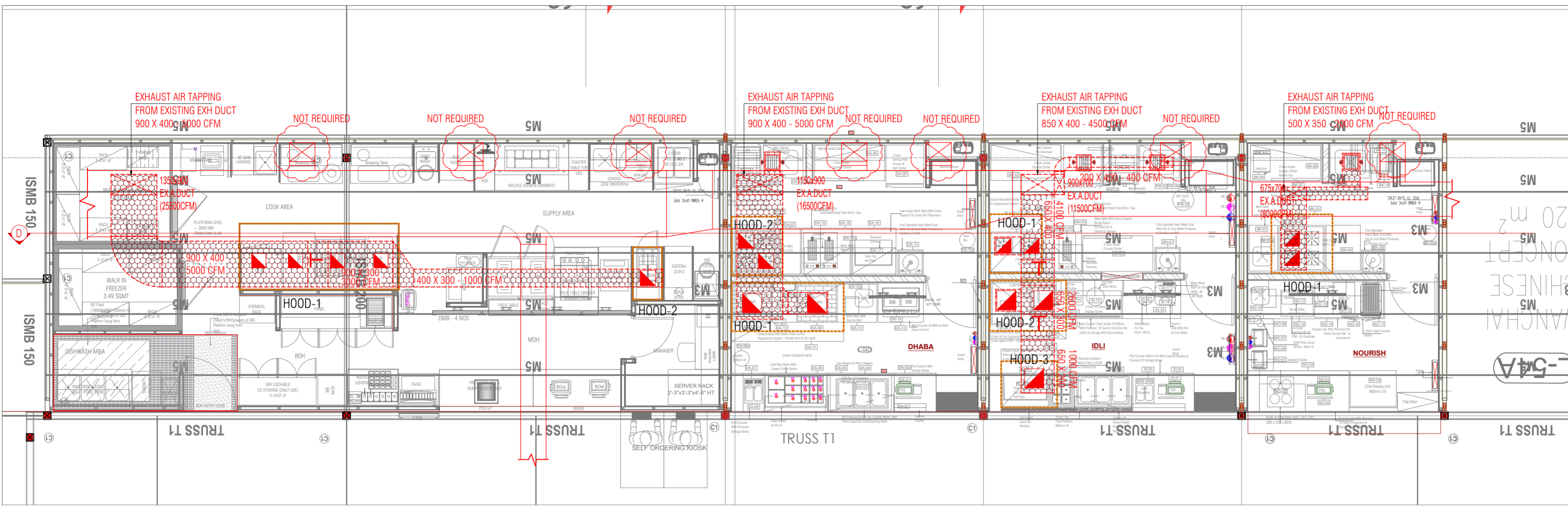






1) DO NOT SCALE THE DRAWINGS FOLLOW THE WRITTEN DIMENSIONS.  
 2) ALL THE DIMENSIONS SHOWN ARE IN ENGLISH UNITS.  
 3) ALL THE MATERIALS FOR CONSTRUCTION SHALL BE TO IS STANDARDS AND AS PER THE SPECIFICATIONS BY THE ARCHITECT.  
 4) ANY AMBIGUITY FOUND IN THE DRAWING SHALL BE IMMEDIATELY BROUGHT TO THE NOTICE OF AN ARCHITECT.



HVAC LEGEND	
Symbol	Description
	Supply Air Duct Acoustic As/Specs
	Supply Air Duct Insulation As/Specs
	150 mm wide Continuous Grille
	Exhaust Air Duct
	Fresh Air Duct
	Exhaust Air Opening
	Exhaust Air Grille
	Fresh Air Grille
	Hood
	Volume Control Damper
	Access Door

REVISIONS		
NO.	DESCRIPTION	DATE
		YYYY-MM-DD
		YYYY-MM-DD
		YYYY-MM-DD

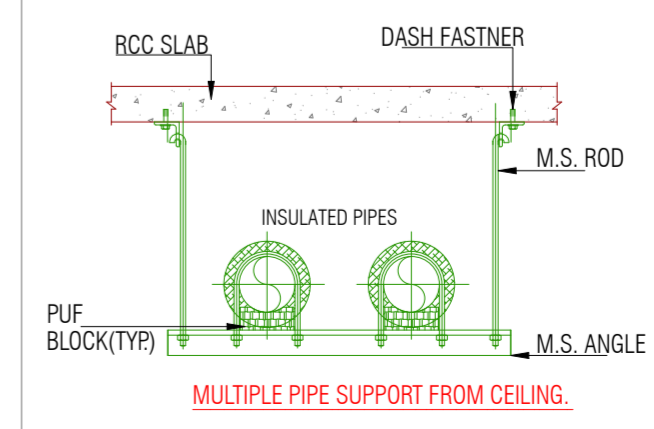
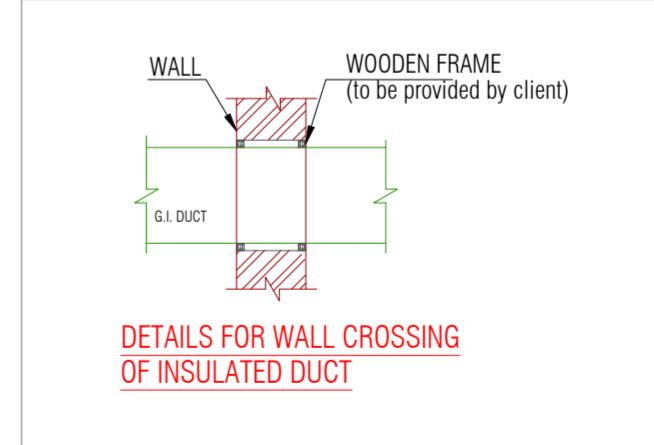
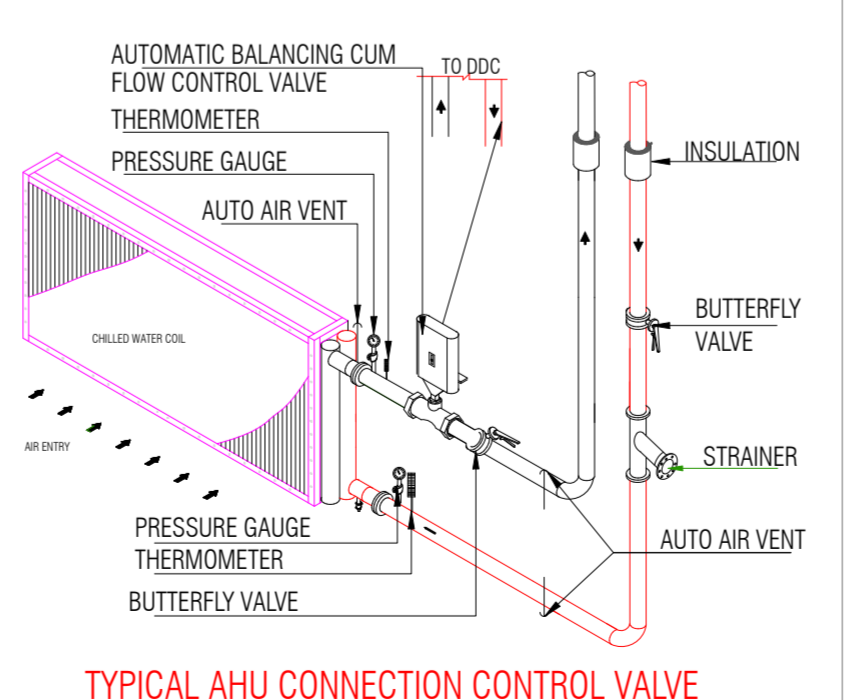
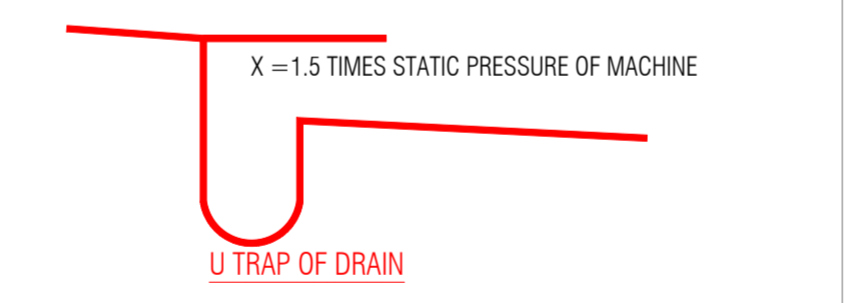
**GENERAL NOTES :**

1. MAIN AC DUCT & BRANCH DUCT SHALL HAVE FIXED FRICTION PRESSURE LOSS AS/DESIGN.
2. ALL BRANCH DUCTS AND BULLNOSE SHALL BE PROVIDED WITH VCD.
3. EXTRACT VALVES IN TOILETS SHALL BE Ø150mm DIA.FLEXIBLE DUCT WITH VCD SHALL BE AS PER AIR FLOW
4. ALL SUPPLY AND RETURN AIR OUTLETS SHALL BE REGISTER TYPE.
5. ALL WORKS SHALL BE SUBJECT TO LOCAL AUTHORITY'S REGULATION & REQUIREMENTS.
6. ALL AC UNITS TO BE EASY TO SERVICE AND MAINTENANCE.
7. THE CONTRACTOR SHALL BE RESPONSIBLE FOR THE CO-ORDINATION OF ALL SERVICES.
8. ALL DUCT, GRILLE AND PIPE SIZES ARE IN (MM OR INCH) AS PER DESIGN.
09. ALL CONDENSATE DRAINS FROM EACH AHU / FCU WHETHER SHOWN ON DRAWING OR NOT SHALL RUN WITH A FALL TO THE NEAREST WASTE STACK OR FLOOR DRAIN VIA U TRAPS.
10. ALL DUCT CONNECTIONS TO A/C UNITS SHALL BE OF THE FLEXIBLE TYPE DUCT CONNECTION.
11. ACCESS PANELS TO BE PROVIDED WITHIN FALSE CEILING AT ALL LOCATIONS OF (FCU, VALVES, FD, VCD, NRD & SPD). CONTRACTOR SHALL CO-ORDINATE WITH ALL MEP SERVICES & FALSE CEILING LAYOUT TO ENSURE THAT COMMON ACCESS PANELS TO BE PROVIDED FOR MAINTENANCE.
12. ALL DUCTWORK WITHIN 3.0 M OF FAN COIL UNITS /AHU SHALL BE ACOUSTICALLY LINED.
13. NON RETURN DAMPER (NRD) SHALL BE PROVIDED AFTER EACH DUCTED EXTRACT FAN.
14. CONTRACTOR SHALL SUBMIT PERFORMANCE TEST CERTIFICATE FOR EACH EQUIPMENT TO CONFIRM THAT IT CAN PRODUCE THE SCHEDULED DUTY AT THE SPECIFIED CONDITIONS.
15. ACOUSTIC MATS SHALL BE PROVIDED ON FALSE CEILING TILES, BELOW FCUS TO ARCHIVE SPECIFIED SOUND LEVELS. - SCOPE????
16. ALL SUPPLY AND EXTRACT DIFFUSERS/GRILLES SHALL HAVE BUILT-IN V.C.D FOR FINAL FINE TUNING.????
17. TOILET/PANTRY DOORS SHALL HAVE 25mm UNDERCUTS FOR AIR CIRCULATION. DOOR GRILLES SHALL NOT BE USE UNLESS OTHERWISE STATED/INDICATED.
18. RETURN AIR OPENING/DUCT OF PROPER SIZE WITH FRAME AND WIRE MESH SHALL BE PROVIDED ABOVE FALSE CEILING WHERE NECESSARY.
19. ALL OPENING FOR RETURN AIR PATH ABOVE FALSE CEILING SHALL BE PROVIDED WITH FD.WHERE A/C SUPPLY DUCT HAS A FD.
20. ANY DISCREPANCIES SHALL BE BROUGHT TO THE ATTENTION OF THE ENGINEER & RESOLVED PRIOR TO COMMENCEMENT OF WORK.
21. ALL FRESH AIR AND EXTRACT BRANCH OUTLET SHALL BE TERMINATED ADJACENT TO EACH FCU WITH VCD AND, STAINLESS STEEL WIRE MESH.
22. ALL EXPOSED ANGLE SUPPORTS FOR DUCTS/PIPES SHALL BE PAINTED AS SPECIFIED. COLOR SUBJECT TO ARCHS APPROVAL.
23. FINAL LOCATION OF FAL & EAL TO BE CO-ORDINATED WITH ARCHS AT SITE. COLOR SUBJECT TO ARCHS APPROVAL.
24. WHERE MORE THAN ONE SERVICE RUNS AT ROOF(ELECTRICAL CABLES,DUCT, PIPES) IS ROUTED THROUGH THE SAME AREA,THEY SHALL BE SUPPORTED BY STRUCTURAL FRAME MULTI TIER SUPPORT WITH SERVICES STACKED ONE ABOVE THE OTHER.
25. ALL SUPPLY AIR DIFFUSER GRILLE PLENUM SHALL BE INTERNALLY LINED AND PAINTED BLACK.
26. CONTRACTOR TO ENSURE THAT THE SPECIFIED ROOM NOISE LEVELS (NC) ARE ACHIEVED.CONTRACTOR SHALL INCLUDE ATTENUATORS ACOUSTIC INSULATION TO DUCTS, INSULATION OF AHU / FCU / PLANT ROOM, ETC TO ACHIEVE THE SPECIFIED NOISE LEVEL.
27. CONTRACTOR SHALL FORWARD TO STRUCTURAL ENGINEER ACTUAL PHYSICAL DIMENSIONS, WEIGHTS OF EQUIPMENT.
28. CONTRACTOR TO CO-ORDINATE WITH STRUCTURAL DRAWINGS FOR OPENINGS & PENETRATIONS.SUBMIT BUILDING WORK SHOP DRAWING FOR STRUCTURAL ENGINEER'S APPROVAL ANY OPENING REQUIRED OTHER THAN THAT SHOWN ON STRUCTURAL DRAWING SHALL BE APPROVED BY STRUCTURAL ENGINEER.

<b>KFC</b> HOOD-1(NON VEG FRYER) EXHAUST AIR OPENING WITH VCD 350 X 350 X 04 NOS. 900 CFM EACH HOOD-2(VEG FRYER) EXHAUST AIR OPENING WITH VCD 350 X 350 X 01 NO. - 1000 CFM 3 SINK EXHAUST AIR GRILLE WITH VCD 300 X 300 X 01 NO. - 400 CFM COLLAR SIZE - 400 X 150	<b>DHABA</b> HOOD-1 (TANDOOR) EXHAUST AIR OPENING WITH VCD 375 X 375 X 02 NOS. 1500 CFM EACH HOOD-2 (4 BURNER RANGE) EXHAUST AIR OPENING WITH VCD 300 X 300 X 02 NOS. 900 CFM EACH POT WASH EXHAUST AIR GRILLE WITH VCD 300 X 300 X 01 NO. - 200 CFM COLLAR SIZE - 400 X 150	<b>IDLI</b> HOOD-1 (2 BURNER RANGE) EXHAUST AIR OPENING WITH VCD 300 X 300 X 02 NOS. 750 CFM EACH HOOD-2 (IDLI STEAMER) EXHAUST AIR OPENING WITH VCD 300 X 300 X 01 NO. - 400 CFM HOOD-2 (COMBI OVEN) EXHAUST AIR OPENING WITH VCD 375 X 375 X 01 NO. - 1200 CFM HOOD-3 (HOT PLATE) EXHAUST AIR OPENING WITH VCD 375 X 375 X 01 NO. - 1000 CFM POT WASH & FREEZER EXHAUST AIR GRILLE WITH VCD 300 X 300 X 02 NOS. 200 CFM EACH COLLAR SIZE - 400 X 150	<b>NOURISH</b> HOOD-1(4 BURNER RANGE) EXHAUST AIR OPENING WITH VCD 300 X 300 X 02 NOS. 900 CFM EACH POT WASH EXHAUST AIR GRILLE WITH VCD 300 X 300 X 01 NO. - 200 CFM COLLAR SIZE - 400 X 150  <b>NOURISH</b> FRESH AIR GRILLE WITH VCD 450 X 450 X 02 NOS. 900 CFM EACH COLLAR SIZE - 550 X 200
--	--	--	--

<b>KFC</b> HOOD-1(NON VEG FRYER) FRESH AIR COLLAR WITH VCD 800 X 200 X 02 NOS. 1500 CFM EACH KFC (HOOD-2) FRESH AIR COLLAR WITH VCD 500 X 200 - 900 CFM KFC (SINK) FRESH AIR GRILLE WITH VCD 400 X 150 X 01 NO. - 300 CFM	<b>DHABA</b> FRESH AIR GRILLE WITH VCD 450 X 450 X 04 NOS. 1125 CFM EACH COLLAR SIZE - 550 X 200
---	--

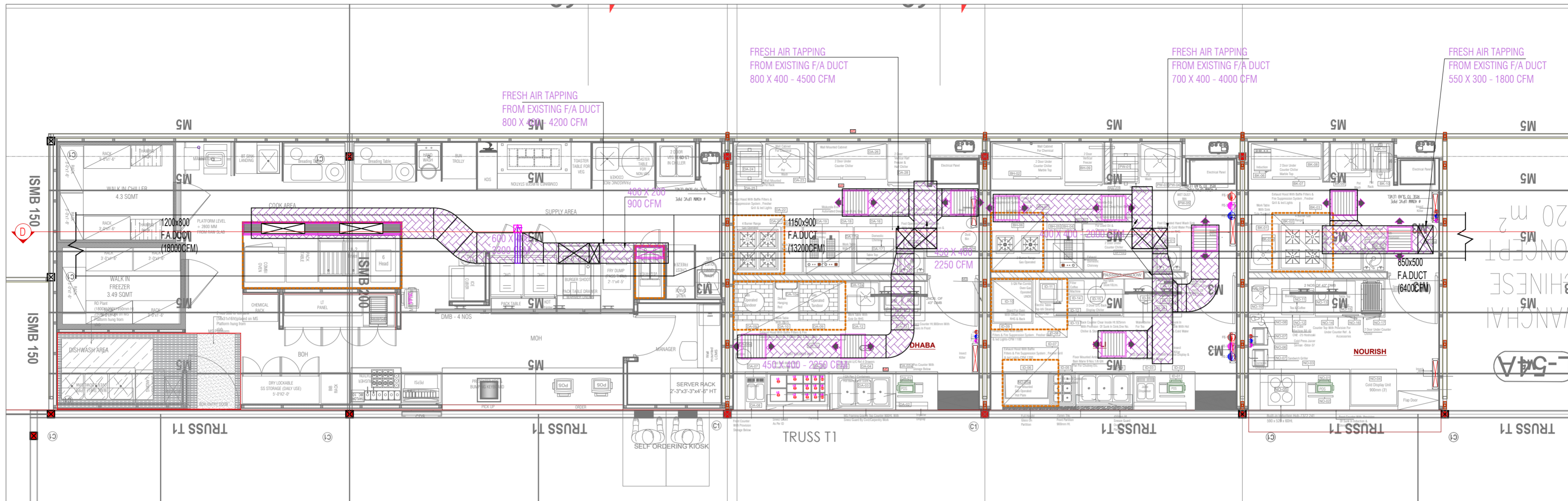
<b>KFC</b> CHW HI WALL UNIT - 1.5TR SIZE - 950W X 300D X 300H BOXING REQUIRED - 950W X 200D	<b>KFC</b> CSDU AHU-8.0 TR -4000 CFM SIZE - 1650W X 1270D X 635H CHWP CONNECTION - 40Ø SUPPLY AIR GRILLE WITH VCD 700 X 150 X 08 NOS.- 475 CFM EACH MANAGER ROOM SUPPLY AIR COLLAR WITH VCD 300 X 100 X 01 NO.-200 CFM
--	---



SIGN/STAMP	
AIRPORT NAME	
AHMEDABAD AIRPORT	
UNIT NO	
LOCATION	
BRAND NAME / PROJECT NAME	
DRAWING TYPE	
TITLE :	
EXHAUST AIR DUCT	
DRN BY	NB
CHKD BY	-
DATE	2023-11
DWG NO.	R0
ARCHITECT: Genesis Architects Pvt. Ltd.	
SHIV SAGAR ESTATE A - BLOCK, 1ST FLOOR ANNIE BESANT ROAD, WORLI, MUMBAI 400018. PH: +91 (22) 4322 4322	







1) DO NOT SCALE THE DRAWINGS FOLLOW THE WRITTEN DIMENSIONS.  
 2) ALL THE DIMENSIONS SHOWN ARE IN ENGLISH UNITS.  
 3) ALL THE MATERIALS FOR CONSTRUCTION SHALL BE TO IS STANDARDS AND AS PER THE SPECIFICATIONS BY THE ARCHITECT.  
 4) ANY AMBIGUITY FOUND IN THE DRAWING SHALL BE IMMEDIATELY BROUGHT TO THE NOTICE OF AN ARCHITECT.

HVAC LEGEND	
Symbol	Description
	Supply Air Duct Acoustic As/Specs
	Supply Air Duct Insulation As/Specs
	150 mm wide Continuous Grille
	Exhaust Air Duct
	Fresh Air Duct
	Exhaust Air Opening
	Exhaust Air Grille
	Fresh Air Grille
	Hood
	Volume Control Damper
	Access Door

REVISIONS		
NO.	DESCRIPTION	DATE
		YYYY-MM-DD
		YYYY-MM-DD
		YYYY-MM-DD

**KFC**  
 HOOD-1 (NON VEG FRYER)  
 EXHAUST AIR OPENING WITH VCD  
 350 X 350 X 04 NOS.  
 900 CFM EACH  
 HOOD-2 (VEG FRYER)  
 EXHAUST AIR OPENING WITH VCD  
 350 X 350 X 01 NO. - 1000 CFM  
 3 SINK  
 EXHAUST AIR GRILLE WITH VCD  
 300 X 300 X 01 NO. - 400 CFM  
 COLLAR SIZE - 400 X 150

**DHABA**  
 HOOD-1 (TANDOOR)  
 EXHAUST AIR OPENING WITH VCD  
 375 X 375 X 02 NOS.  
 1500 CFM EACH  
 HOOD-2 (4 BURNER RANGE)  
 EXHAUST AIR OPENING WITH VCD  
 300 X 300 X 02 NOS.  
 900 CFM EACH  
 POT WASH  
 EXHAUST AIR GRILLE WITH VCD  
 300 X 300 X 01 NO. - 200 CFM  
 COLLAR SIZE - 400 X 150

**IDLI**  
 HOOD-1 (2 BURNER RANGE)  
 EXHAUST AIR OPENING WITH VCD  
 300 X 300 X 02 NOS.  
 750 CFM EACH  
 HOOD-2 (IDLI STEAMER)  
 EXHAUST AIR OPENING WITH VCD  
 300 X 300 X 01 NO. - 400 CFM  
 HOOD-2 (COMBI OVEN)  
 EXHAUST AIR OPENING WITH VCD  
 375 X 375 X 01 NO. - 1200 CFM  
 HOOD-3 (HOT PLATE)  
 EXHAUST AIR OPENING WITH VCD  
 375 X 375 X 01 NO. - 1000 CFM  
 POT WASH & FREEZER  
 EXHAUST AIR GRILLE WITH VCD  
 300 X 300 X 02 NOS.  
 200 CFM EACH  
 COLLAR SIZE - 400 X 150

**NOURISH**  
 HOOD-1 (4 BURNER RANGE)  
 EXHAUST AIR OPENING WITH VCD  
 300 X 300 X 02 NOS.  
 900 CFM EACH  
 POT WASH  
 EXHAUST AIR GRILLE WITH VCD  
 300 X 300 X 01 NO. - 200 CFM  
 COLLAR SIZE - 400 X 150  
 NOURISH  
 FRESH AIR GRILLE WITH VCD  
 450 X 450 X 02 NOS.  
 900 CFM EACH  
 COLLAR SIZE - 550 X 200

**KFC**  
 HOOD-1 (NON VEG FRYER)  
 FRESH AIR COLLAR WITH VCD  
 800 X 200 X 02 NOS.  
 1500 CFM EACH  
 KFC (HOOD-2)  
 FRESH AIR COLLAR WITH VCD  
 500 X 200 - 900 CFM  
 KFC (SINK)  
 FRESH AIR GRILLE WITH VCD  
 400 X 150 X 01 NO. - 300 CFM

**DHABA**  
 FRESH AIR GRILLE WITH VCD  
 450 X 450 X 04 NOS.  
 1125 CFM EACH  
 COLLAR SIZE - 550 X 200

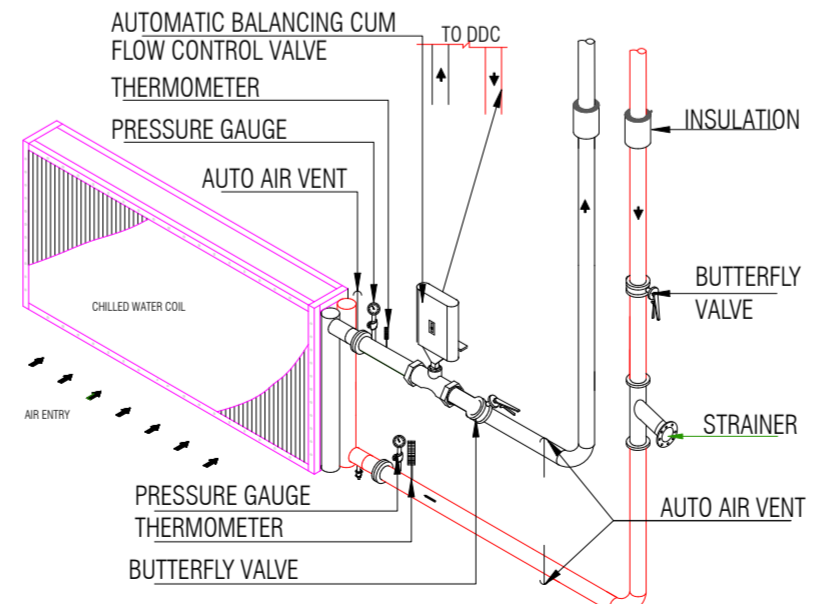
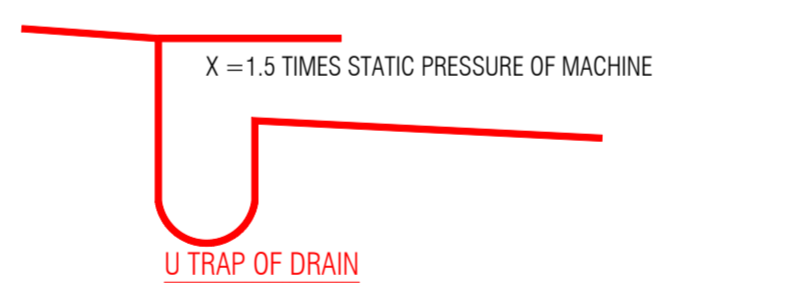
**IDLI**  
 FRESH AIR GRILLE WITH VCD  
 450 X 450 X 04 NOS.  
 1000 CFM EACH  
 COLLAR SIZE - 550 X 200

**KFC**  
 CHW HI WALL UNIT - 1.5TR  
 SIZE - 950W X 300D X 300H  
 BOXING REQUIRED - 950W X 200D

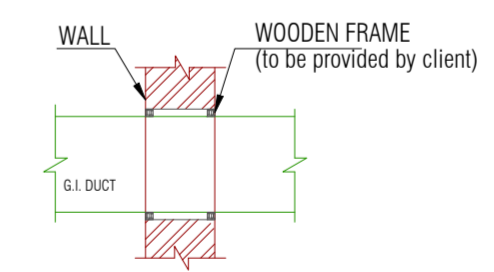
**KFC**  
 CSDU AHU-8.0 TR -4000 CFM  
 SIZE - 1650W X 1270D X 635H  
 CHWP CONNECTION - 40Ø  
 SUPPLY AIR GRILLE WITH VCD  
 700 X 150 X 08 NOS.-  
 475 CFM EACH  
 MANAGER ROOM  
 SUPPLY AIR COLLAR WITH VCD  
 300 X 100 X 01 NO.-200 CFM

**GENERAL NOTES :**

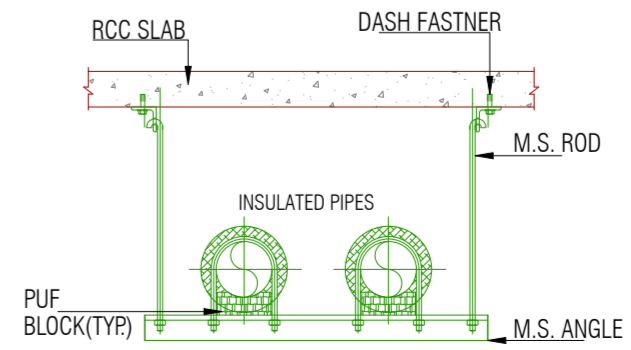
1. MAIN AC DUCT & BRANCH DUCT SHALL HAVE FIXED FRICTION PRESSURE LOSS AS/DESIGN.
2. ALL BRANCH DUCTS AND BULLNOSE SHALL BE PROVIDED WITH VCD.
3. EXTRACT VALVES IN TOILETS SHALL BE Ø150mm DIA.FLEXIBLE DUCT WITH VCD SHALL BE AS PER AIR FLOW
4. ALL SUPPLY AND RETURN AIR OUTLETS SHALL BE REGISTER TYPE.
5. ALL WORKS SHALL BE SUBJECT TO LOCAL AUTHORITY'S REGULATION & REQUIREMENTS.
6. ALL AC UNITS TO BE EASY TO SERVICE AND MAINTENANCE.
7. THE CONTRACTOR SHALL BE RESPONSIBLE FOR THE CO-ORDINATION OF ALL SERVICES.
8. ALL DUCT, GRILLE AND PIPE SIZES ARE IN (MM OR INCH) AS PER DESIGN.
9. ALL CONDENSATE DRAINS FROM EACH AHU / FCU WHETHER SHOWN ON DRAWING OR NOT SHALL RUN WITH A FALL TO THE NEAREST WASTE STACK OR FLOOR DRAIN VIA U TRAPS.
10. ALL DUCT CONNECTIONS TO A/C UNITS SHALL BE OF THE FLEXIBLE TYPE DUCT CONNECTION.
11. ACCESS PANELS TO BE PROVIDED WITHIN FALSE CEILING AT ALL LOCATIONS OF (FCU, VALVES, FD, VCD, NRD & SPD). CONTRACTOR SHALL CO-ORDINATE WITH ALL MEP SERVICES & FALSE CEILING LAYOUT TO ENSURE THAT COMMON ACCESS PANELS TO BE PROVIDED FOR MAINTENANCE.
12. ALL DUCTWORK WITHIN 3.0 M OF FAN COIL UNITS /AHU SHALL BE ACOUSTICALLY LINED.
13. NON RETURN DAMPER (NRD) SHALL BE PROVIDED AFTER EACH DUCTED EXTRACT FAN.
14. CONTRACTOR SHALL SUBMIT PERFORMANCE TEST CERTIFICATE FOR EACH EQUIPMENT TO CONFIRM THAT IT CAN PRODUCE THE SCHEDULED DUTY AT THE SPECIFIED CONDITIONS.
15. ACOUSTIC MATS SHALL BE PROVIDED ON FALSE CEILING TILES, BELOW FCUS TO ARCHIVE SPECIFIED SOUND LEVELS. - SCOPE????
16. ALL SUPPLY AND EXTRACT DIFFUSERS/GRILLES SHALL HAVE BUILT-IN V.C.D FOR FINAL FINE TUNING.????
17. TOILET/PANTRY DOORS SHALL HAVE 25mm UNDERCUTS FOR AIR CIRCULATION. DOOR GRILLES SHALL NOT BE USE UNLESS OTHERWISE STATED/INDICATED.
18. RETURN AIR OPENING/DUCT OF PROPER SIZE WITH FRAME AND WIRE MESH SHALL BE PROVIDED ABOVE FALSE CEILING WHERE NECESSARY.
19. ALL OPENING FOR RETURN AIR PATH ABOVE FALSE CEILING SHALL BE PROVIDED WITH FD.WHERE A/C SUPPLY DUCT HAS A FD.
20. ANY DISCREPANCIES SHALL BE BROUGHT TO THE ATTENTION OF THE ENGINEER & RESOLVED PRIOR TO COMMENCEMENT OF WORK.
21. ALL FRESH AIR AND EXTRACT BRANCH OUTLET SHALL BE TERMINATED ADJACENT TO EACH FCU WITH VCD AND, STAINLESS STEEL WIRE MESH.
22. ALL EXPOSED ANGLE SUPPORTS FOR DUCTS/PIPES SHALL BE PAINTED AS SPECIFIED. COLOR SUBJECT TO ARCHS APPROVAL.
23. FINAL LOCATION OF FAL & EAL TO BE CO-ORDINATED WITH ARCHS AT SITE. COLOR SUBJECT TO ARCHS APPROVAL.
24. WHERE MORE THAN ONE SERVICE RUNS AT ROOF(ELECTRICAL CABLES,DUCT, PIPES) IS ROUTED THROUGH THE SAME AREA,THEY SHALL BE SUPPORTED BY STRUCTURAL FRAME MULTI TIER SUPPORT WITH SERVICES STACKED ONE ABOVE THE OTHER.
25. ALL SUPPLY AIR DIFFUSER GRILLE PLENUM SHALL BE INTERNALLY LINED AND PAINTED BLACK.
26. CONTRACTOR TO ENSURE THAT THE SPECIFIED ROOM NOISE LEVELS (NC) ARE ACHIEVED.CONTRACTOR SHALL INCLUDE ATTENUATORS ACOUSTIC INSULATION TO DUCTS, INSULATION OF AHU / FCU / PLANT ROOM, ETC TO ACHIEVE THE SPECIFIED NOISE LEVEL.
27. CONTRACTOR SHALL FORWARD TO STRUCTURAL ENGINEER ACTUAL PHYSICAL DIMENSIONS, WEIGHTS OF EQUIPMENT.
28. CONTRACTOR TO CO-ORDINATE WITH STRUCTURAL DRAWINGS FOR OPENINGS & PENETRATIONS.SUBMIT BUILDING WORK SHOP DRAWING FOR STRUCTURAL ENGINEER'S APPROVAL ANY OPENING REQUIRED OTHER THAN THAT SHOWN ON STRUCTURAL DRAWING SHALL BE APPROVED BY STRUCTURAL ENGINEER.



**TYPICAL AHU CONNECTION CONTROL VALVE**



**DETAILS FOR WALL CROSSING OF INSULATED DUCT**



**MULTIPLE PIPE SUPPORT FROM CEILING.**

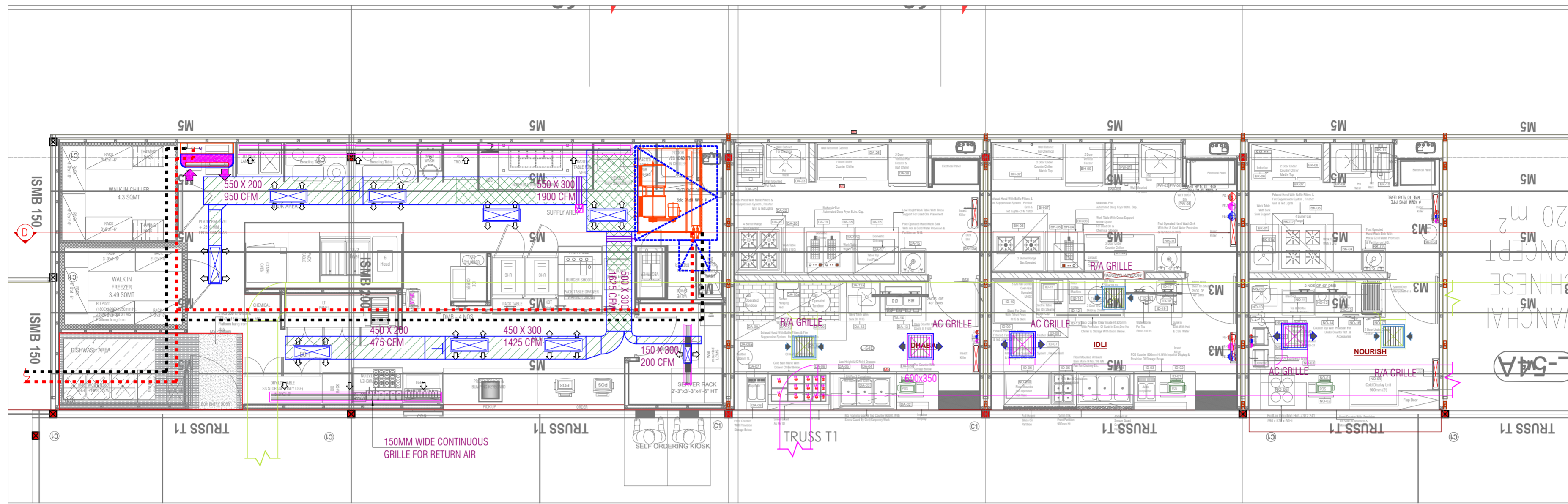
SIGN/STAMP	
AIRPORT NAME	
AHMEDABAD AIRPORT	
UNIT NO	
LOCATION	
BRAND NAME / PROJECT NAME	
DRAWING TYPE	
TITLE :	
FRESH AIR DUCT	
DRN BY	NB
CHKD BY	-
DATE	2023-11
DWG NO.	
ARCHITECT: Genesis Architects Pvt. Ltd.	
SHIV SAGAR ESTATE	
A - BLOCK, 1ST FLOOR	
ANNIE BESANT ROAD,	
WORLI, MUMBAI 400018.	
PH: +91 (22) 4322 4322	





1) DO NOT SCALE THE DRAWINGS FOLLOW THE WRITTEN DIMENSIONS.  
 2) ALL THE DIMENSIONS SHOWN ARE IN ENGLISH UNITS.  
 3) ALL THE MATERIALS FOR CONSTRUCTION SHALL BE TO IS STANDARDS AND AS PER THE SPECIFICATIONS BY THE ARCHITECT.  
 4) ANY AMBIGUITY FOUND IN THE DRAWING SHALL BE IMMEDIATELY BROUGHT TO THE NOTICE OF AN ARCHITECT.

HVAC LEGEND	
Symbol	Description
	Supply Air Duct Acoustic As/Specs
	Supply Air Duct Insulation As/Specs
	150 mm wide Continuous Grille
	Exhaust Air Duct
	Fresh Air Duct
	Exhaust Air Opening
	Exhaust Air Grille
	Fresh Air Grille
	Hood
	Volume Control Damper
	Access Door



REVISIONS		
NO.	DESCRIPTION	DATE
		YYYY-MM-DD
		YYYY-MM-DD
		YYYY-MM-DD

**KFC**  
 HOOD-1 (NON VEG FRYER)  
 EXHAUST AIR OPENING WITH VCD  
 350 X 350 X 04 NOS.  
 900 CFM EACH  
 HOOD-2 (VEG FRYER)  
 EXHAUST AIR OPENING WITH VCD  
 350 X 350 X 01 NO. - 1000 CFM  
 3 SINK  
 EXHAUST AIR GRILLE WITH VCD  
 300 X 300 X 01 NO. - 400 CFM  
 COLLAR SIZE - 400 X 150

**DHABA**  
 HOOD-1 (TANDOOR)  
 EXHAUST AIR OPENING WITH VCD  
 375 X 375 X 02 NOS.  
 1500 CFM EACH  
 HOOD-2 (4 BURNER RANGE)  
 EXHAUST AIR OPENING WITH VCD  
 300 X 300 X 02 NOS.  
 900 CFM EACH  
 POT WASH  
 EXHAUST AIR GRILLE WITH VCD  
 300 X 300 X 01 NO. - 200 CFM  
 COLLAR SIZE - 400 X 150

**IDLI**  
 HOOD-1 (2 BURNER RANGE)  
 EXHAUST AIR OPENING WITH VCD  
 300 X 300 X 02 NOS.  
 750 CFM EACH  
 HOOD-2 (IDLI STEAMER)  
 EXHAUST AIR OPENING WITH VCD  
 300 X 300 X 01 NO. - 400 CFM  
 HOOD-2 (COMBI OVEN)  
 EXHAUST AIR OPENING WITH VCD  
 375 X 375 X 01 NO. - 1200 CFM  
 HOOD-3 (HOT PLATE)  
 EXHAUST AIR OPENING WITH VCD  
 375 X 375 X 01 NO. - 1000 CFM  
 POT WASH & FREEZER  
 EXHAUST AIR GRILLE WITH VCD  
 300 X 300 X 02 NOS.  
 200 CFM EACH  
 COLLAR SIZE - 400 X 150

**NOURISH**  
 HOOD-1 (4 BURNER RANGE)  
 EXHAUST AIR OPENING WITH VCD  
 300 X 300 X 02 NOS.  
 900 CFM EACH  
 POT WASH  
 EXHAUST AIR GRILLE WITH VCD  
 300 X 300 X 01 NO. - 200 CFM  
 COLLAR SIZE - 400 X 150  
 NOURISH  
 FRESH AIR GRILLE WITH VCD  
 450 X 450 X 02 NOS.  
 900 CFM EACH  
 COLLAR SIZE - 550 X 200

**KFC**  
 HOOD-1 (NON VEG FRYER)  
 FRESH AIR COLLAR WITH VCD  
 800 X 200 X 02 NOS.  
 1500 CFM EACH  
 KFC (HOOD-2)  
 FRESH AIR COLLAR WITH VCD  
 500 X 200 - 900 CFM  
 KFC (SINK)  
 FRESH AIR GRILLE WITH VCD  
 400 X 150 X 01 NO. - 300 CFM

**DHABA**  
 FRESH AIR GRILLE WITH VCD  
 450 X 450 X 04 NOS.  
 1125 CFM EACH  
 COLLAR SIZE - 550 X 200

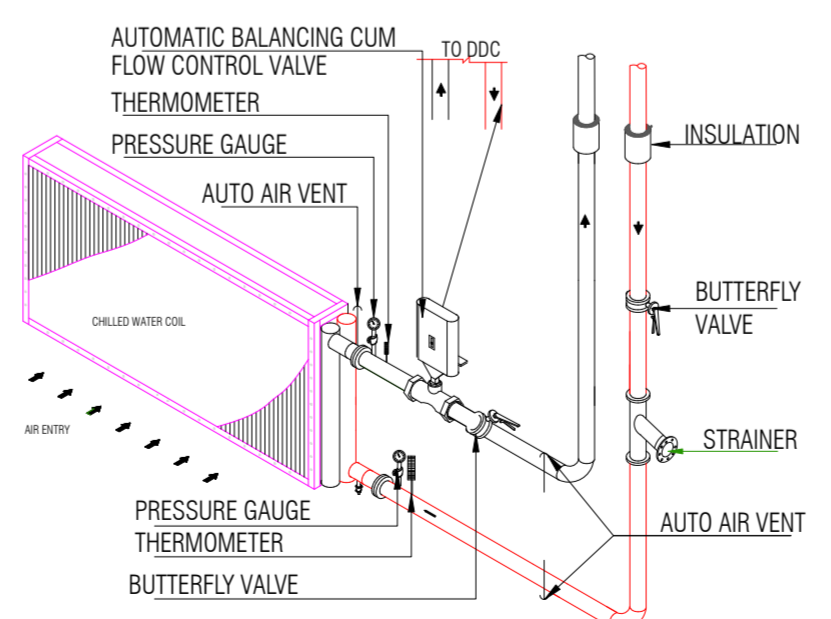
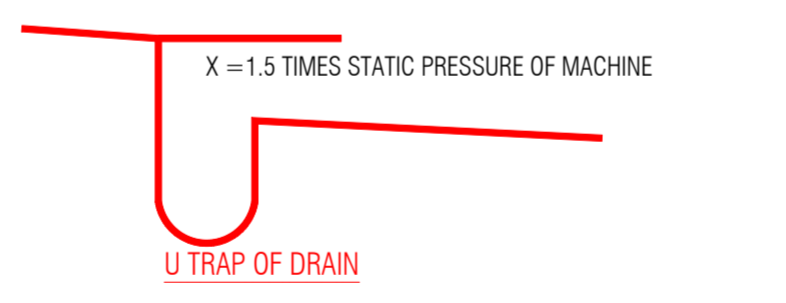
**IDLI**  
 FRESH AIR GRILLE WITH VCD  
 450 X 450 X 04 NOS.  
 1000 CFM EACH  
 COLLAR SIZE - 550 X 200

**KFC**  
 CHW HI WALL UNIT - 1.5TR  
 SIZE - 950W X 300D X 300H  
 BOXING REQUIRED - 950W X 200D

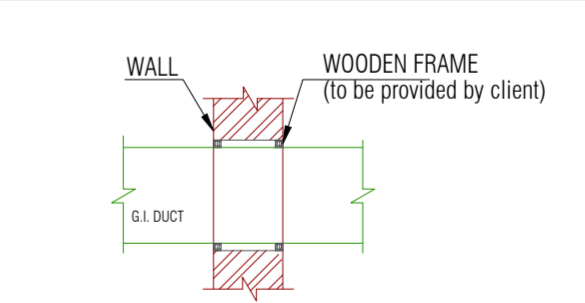
**KFC**  
 CSDU AHU-8.0 TR - 4000 CFM  
 SIZE - 1650W X 1270D X 635H  
 CHWP CONNECTION - 40Ø  
 SUPPLY AIR GRILLE WITH VCD  
 700 X 150 X 08 NOS.-  
 475 CFM EACH  
 MANAGER ROOM  
 SUPPLY AIR COLLAR WITH VCD  
 300 X 100 X 01 NO. - 200 CFM

**GENERAL NOTES :**

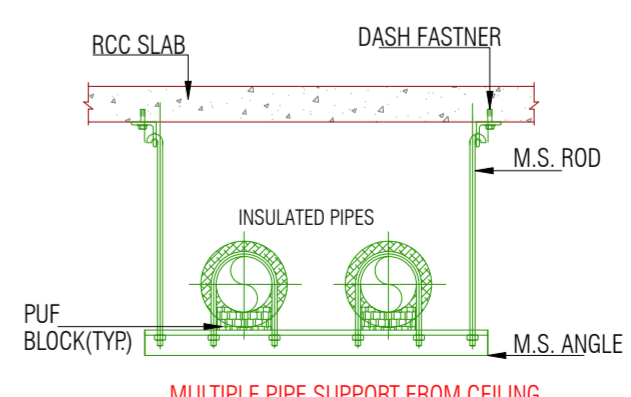
1. MAIN AC DUCT & BRANCH DUCT SHALL HAVE FIXED FRICTION PRESSURE LOSS AS/DESIGN.
2. ALL BRANCH DUCTS AND BULLNOSE SHALL BE PROVIDED WITH VCD.
3. EXTRACT VALVES IN TOILETS SHALL BE Ø150mm DIA.FLEXIBLE DUCT WITH VCD SHALL BE AS PER AIR FLOW
4. ALL SUPPLY AND RETURN AIR OUTLETS SHALL BE REGISTER TYPE.
5. ALL WORKS SHALL BE SUBJECT TO LOCAL AUTHORITY'S REGULATION & REQUIREMENTS.
6. ALL AC UNITS TO BE EASY TO SERVICE AND MAINTENANCE.
7. THE CONTRACTOR SHALL BE RESPONSIBLE FOR THE CO-ORDINATION OF ALL SERVICES.
8. ALL DUCT, GRILLE AND PIPE SIZES ARE IN (MM OR INCH) AS PER DESIGN.
9. ALL CONDENSATE DRAINS FROM EACH AHU / FCU WHETHER SHOWN ON DRAWING OR NOT SHALL RUN WITH A FALL TO THE NEAREST WASTE STACK OR FLOOR DRAIN VIA U TRAPS.
10. ALL DUCT CONNECTIONS TO A/C UNITS SHALL BE OF THE FLEXIBLE TYPE DUCT CONNECTION.
11. ACCESS PANELS TO BE PROVIDED WITHIN FALSE CEILING AT ALL LOCATIONS OF (FCU, VALVES, FD, VCD, NRD & SPD). CONTRACTOR SHALL CO-ORDINATE WITH ALL MEP SERVICES & FALSE CEILING LAYOUT TO ENSURE THAT COMMON ACCESS PANELS TO BE PROVIDED FOR MAINTENANCE.
12. ALL DUCTWORK WITHIN 3.0 M OF FAN COIL UNITS / AHU SHALL BE ACOUSTICALLY LINED.
13. NON RETURN DAMPER (NRD) SHALL BE PROVIDED AFTER EACH DUCTED EXTRACT FAN.
14. CONTRACTOR SHALL SUBMIT PERFORMANCE TEST CERTIFICATE FOR EACH EQUIPMENT TO CONFIRM THAT IT CAN PRODUCE THE SCHEDULED DUTY AT THE SPECIFIED CONDITIONS.
15. ACOUSTIC MATS SHALL BE PROVIDED ON FALSE CEILING TILES, BELOW FCUS TO ARCHIVE SPECIFIED SOUND LEVELS. - SCOPE????
16. ALL SUPPLY AND EXTRACT DIFFUSERS/GRILLES SHALL HAVE BUILT-IN V.C.D FOR FINAL FINE TUNING.????
17. TOILET/PANTRY DOORS SHALL HAVE 25mm UNDERCUTS FOR AIR CIRCULATION. DOOR GRILLES SHALL NOT BE USE UNLESS OTHERWISE STATED/INDICATED.
18. RETURN AIR OPENING/DUCT OF PROPER SIZE WITH FRAME AND WIRE MESH SHALL BE PROVIDED ABOVE FALSE CEILING WHERE NECESSARY.
19. ALL OPENING FOR RETURN AIR PATH ABOVE FALSE CEILING SHALL BE PROVIDED WITH FD.WHERE A/C SUPPLY DUCT HAS A FD.
20. ANY DISCREPANCIES SHALL BE BROUGHT TO THE ATTENTION OF THE ENGINEER & RESOLVED PRIOR TO COMMENCEMENT OF WORK.
21. ALL FRESH AIR AND EXTRACT BRANCH OUTLET SHALL BE TERMINATED ADJACENT TO EACH FCU WITH VCD AND, STAINLESS STEEL WIRE MESH.
22. ALL EXPOSED ANGLE SUPPORTS FOR DUCTS/PIPES SHALL BE PAINTED AS SPECIFIED. COLOR SUBJECT TO ARCHS APPROVAL.
23. FINAL LOCATION OF FAL & EAL TO BE CO-ORDINATED WITH ARCHS AT SITE. COLOR SUBJECT TO ARCHS APPROVAL.
24. WHERE MORE THAN ONE SERVICE RUNS AT ROOF(ELECTRICAL CABLES,DUCT, PIPES) IS ROUTED THROUGH THE SAME AREA,THEY SHALL BE SUPPORTED BY STRUCTURAL FRAME MULTI TIER SUPPORT WITH SERVICES STACKED ONE ABOVE THE OTHER.
25. ALL SUPPLY AIR DIFFUSER GRILLE PLENUM SHALL BE INTERNALLY LINED AND PAINTED BLACK.
26. CONTRACTOR TO ENSURE THAT THE SPECIFIED ROOM NOISE LEVELS (NC) ARE ACHIEVED.CONTRACTOR SHALL INCLUDE ATTENUATORS ACOUSTIC INSULATION TO DUCTS, INSULATION OF AHU / FCU / PLANT ROOM, ETC TO ACHIEVE THE SPECIFIED NOISE LEVEL.
27. CONTRACTOR SHALL FORWARD TO STRUCTURAL ENGINEER ACTUAL PHYSICAL DIMENSIONS, WEIGHTS OF EQUIPMENT.
28. CONTRACTOR TO CO-ORDINATE WITH STRUCTURAL DRAWINGS FOR OPENINGS & PENETRATIONS.SUBMIT BUILDING WORK SHOP DRAWING FOR STRUCTURAL ENGINEER'S APPROVAL ANY OPENING REQUIRED OTHER THAN THAT SHOWN ON STRUCTURAL DRAWING SHALL BE APPROVED BY STRUCTURAL ENGINEER.



TYPICAL AHU CONNECTION CONTROL VALVE



DETAILS FOR WALL CROSSING OF INSULATED DUCT



MULTIPLE PIPE SUPPORT FROM CEILING.

SIGN/STAMP	
AIRPORT NAME	
AHMEDABAD AIRPORT	
UNIT NO	
LOCATION	
BRAND NAME / PROJECT NAME	
DRAWING TYPE	
TITLE : SUPPLY AIR DUCT	
DRN BY	NB
CHKD BY	-
DATE	2023-11
DWG NO.	
ARCHITECT: Genesis Architects Pvt. Ltd.	
SHIV SAGAR ESTATE A - BLOCK, 1ST FLOOR ANNIE BESANT ROAD, WORLI, MUMBAI 400018. PH: +91 (22) 4322 4322	
SCALE	R0
REV	

