

**NOTES:-**

- Feasibility of construct for all works shall be concessionaire's responsibility without disturbing DIAL Assets/Services.
- Ducting shall be installed in accordance with IS: 655. Thermal insulation on supply Air, Return Air & Fresh Air ducting shall be 19MM thick closed cell anti-microbial Class 'O' BS-476 part 6&7, FM approved Nitrile Rubber Elastomeric insulation of thermal conductivity 0.033w/m<sup>2</sup>k at 0°C.
- Condensate drain pipe shall be conforming to IS: 4985 class '3' UPVC piping. UPVC solvent cement conforming to ASTM D-2564 shall be used for joints of UPVC piping. Thermal insulation On condensate drain piping shall be 25mm thick. Closed cell antimicrobial class 'o' BS-476 part 6&7, FM approved nitrile rubber elastomeric insulation of thermal conductivity 0.033w/m<sup>2</sup>k at 0°C.
- All materials / items to be used t site are subjected to prior inspection and approval from DIAL-Engg. Data sheets wrt all material need to be submitted for prior approval. Test certificate Wrt all materials needs to be submitted prior to installation during MIR process.
- Test certificates wrt all materials need to be submitted prior to installation during MIR process.
- Approved makes for AHU section are VTS, ZECO & WAVES. Approved makes for grille, diffusers, louvers, VCD are CARRAIRE, SYSTEMAIR, DYNACRAFT, AIRMASTER.
- Turning/splitter vanes shall be provided wherever shown in drawing / as per SMACNA standard.
- Duct joint are to be provided with 6mm thick neoprene gasket and silicon sealant.
- Avoid flanges, dampers or any other ducting joint below beam / capital.
- There should not be any electrical panel, Equipments below the AC machine.
- Provision of removable or openable ceiling for servicing and maintenance of AC units, dampers etc. shall be considered.
- Duct, CHW / Ref piping & drain piping shall be supported at regular interval at a distance of 2.4meter.

**HVAC LEGENDS**

NO.	SYMBOL	DESCRIPTION
01		SUPPLY AIR RECTANGULAR DUCT
02		SUPPLY AIR ELLIPTICAL DUCT
03		TREATED FRESH AIR ELLIPTICAL DUCT
04		KITCHEN FRESH AIR RECTANGULAR DUCT
05		KITCHEN EXHAUST AIR RECTANGULAR DUCT
06		MOTORISED FIRE DAMPER
07		VOLUME CONTROL DAMPER
08		FRESH AIR GRILLE
09		EXHAUST AIR GRILLE
10		RETURN AIR GRILLE
11		LINEAR GRILLE
12		WALL CUTOUT
13		EXHAUST FAN
14		FRESH AIR FAN
15		SCRUBBER UNIT
16		AIRTIGHT PELMET
17		CHILLED WATER SUPPLY PIPE WITH INSULATION
18		CHILLED WATER RETURN PIPE WITH INSULATION
19		DRAIN PIPE
20		CEILING SUSPENDED AIR HANDLING UNIT WITH TRAP DOOR

**KEY Plan**

- GENERAL NOTES:**
- THIS DRAWING CAN BE SCALED AS PER THE PAPER SIZE
  - ALL DIMENSIONS ARE IN MM UNLESS SPECIFIED
  - REFER TO BOQ FOR DETAILED SPECIFICATIONS
  - IN CASE OF ANY DISCREPANCY IN THE DRAWING, PLEASE INFORM THE AURA DEZYNE TEAM PRIOR TO EXECUTION.

- HVAC NOTES:**
- ALL DIMENSIONS ARE IN MM.
  - ALL B.O.D. (BOTTOM OF DUCT & CENTER LINE LEVEL) ARE WITH RESPECT TO DATUM FLOOR LEVEL.
  - DO NOT SCALE THE DRAWING. ONLY WRITTEN DIMENSIONS TO BE FOLLOWED.
  - THIS DRAWING IS A RIGHT & PROPERTY OF MEPTK NOT TO BE PRODUCED, COPIED, HANDED OVER TO THIRD PARTY OR USED FOR ANY OTHER PURPOSE OTHER THAN FOR WHICH IT IS INTENDED AND REMAIN OUR SOLE PROPERTY.
  - ALL DIMENSIONS SHALL BE VERIFIED ON SITE PRIOR TO START OF WORK

REV	AS PER COMMENTS	DATE	K.P./P.P./S.S.
01		24.01.2024	DGN/DRN/CHK/APP

**PURPOSE OF ISSUE:**

**FOR APPROVAL**

**CLIENT:**



**Travel Food Services Pvt Ltd**  
Shiv Sagar Estate, A-Block, 1st floor A.B.  
Road Wori, Mumbai - 400 018  
INDIA.  
www.travelfoodservices.com

**MEP CONSULTANT:**



**MEPTK CONSULTANTS**  
Sumer kendra, 209, opp. mahindra tower, worli, Mumbai-400018  
nimish.shah@meptkconsultants.com

**CONCEPT DESIGNER:**

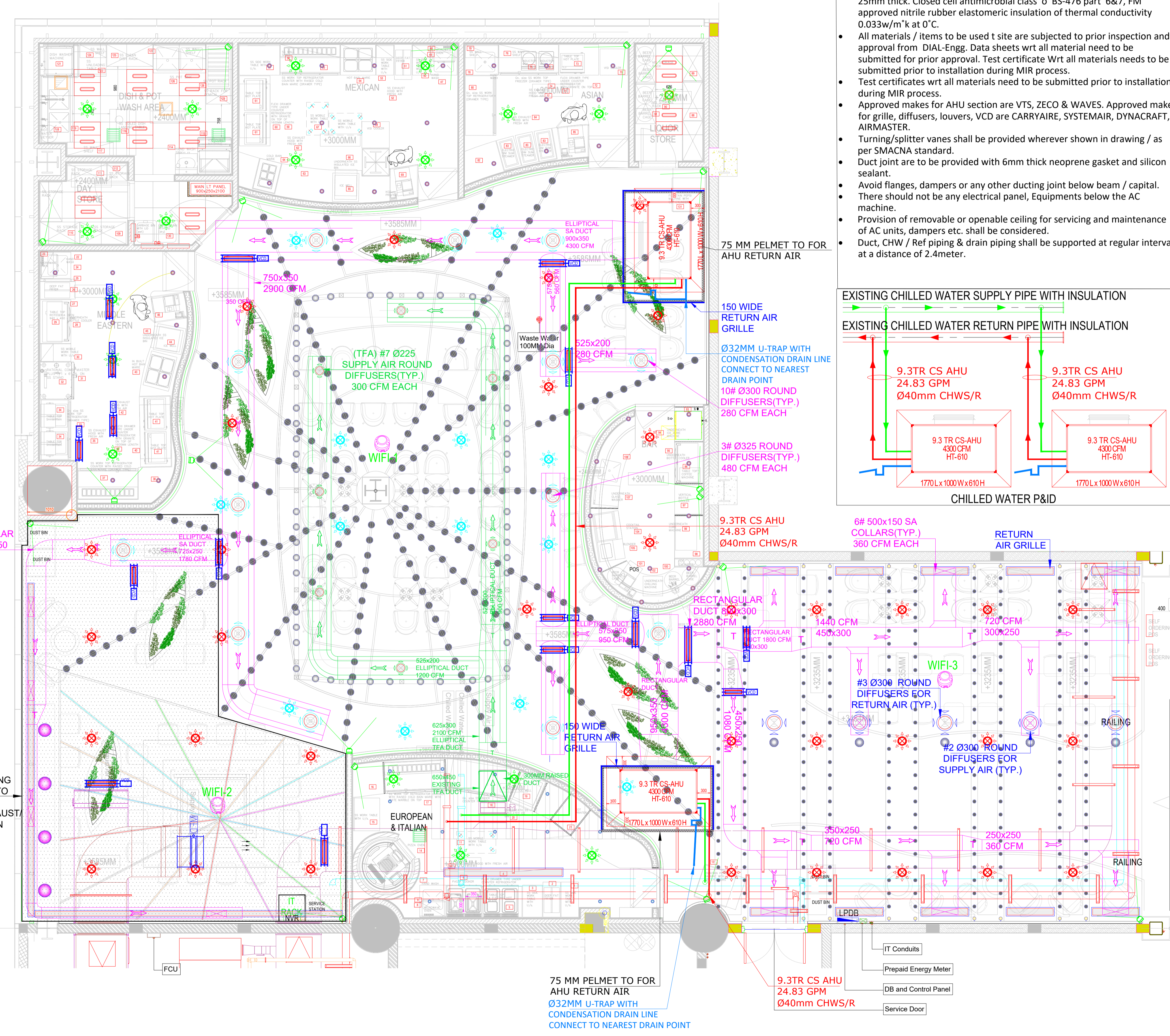
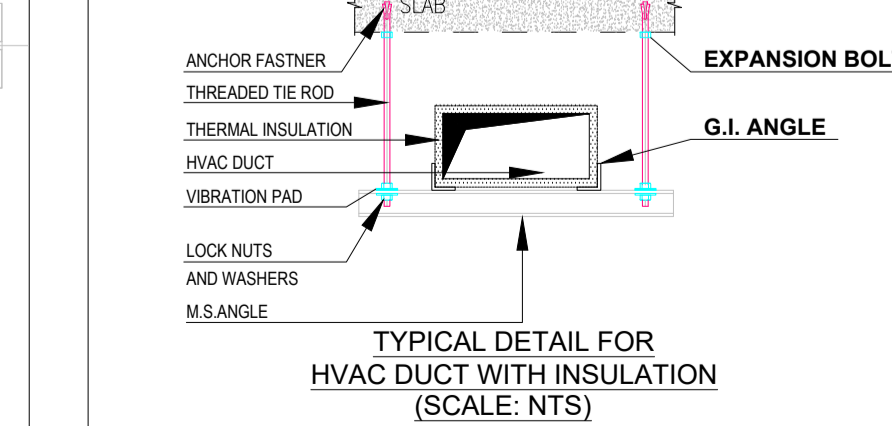
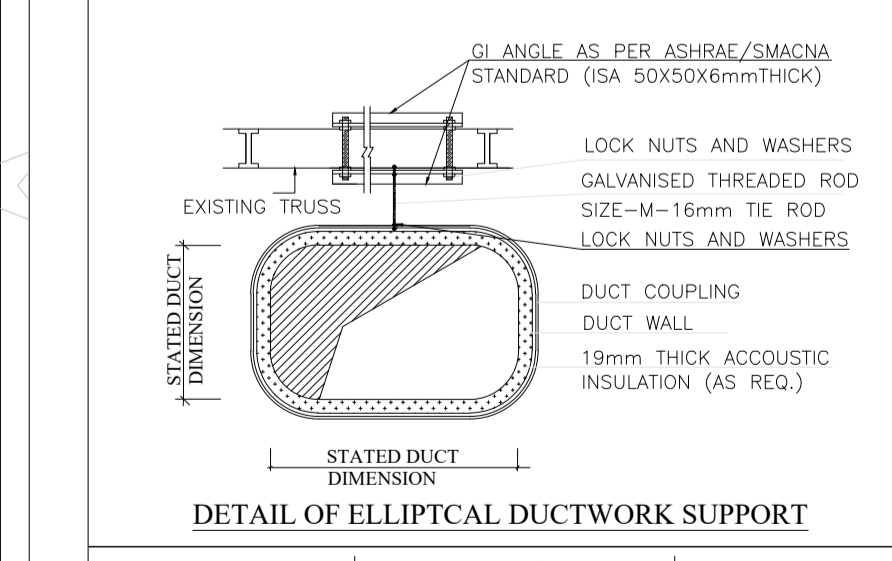
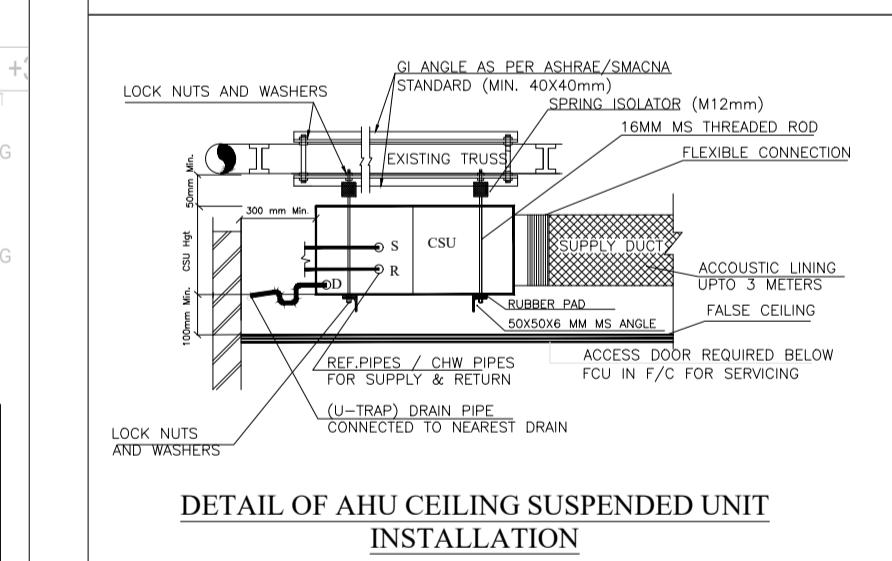
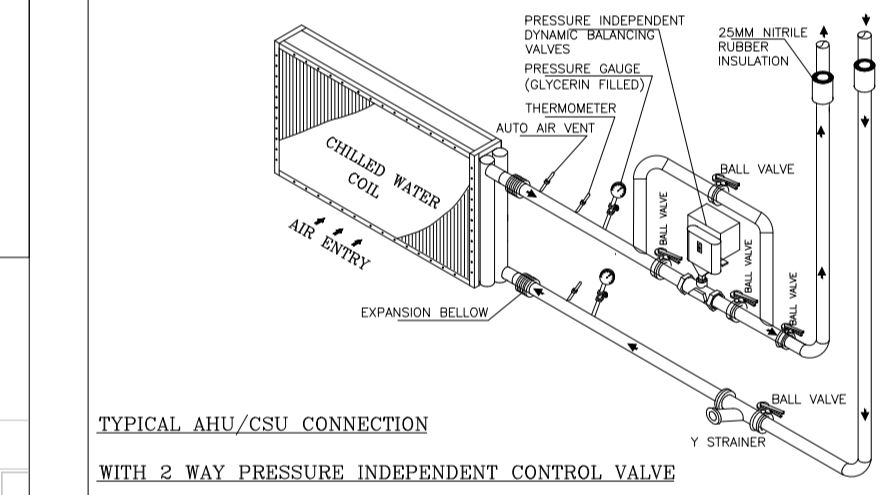
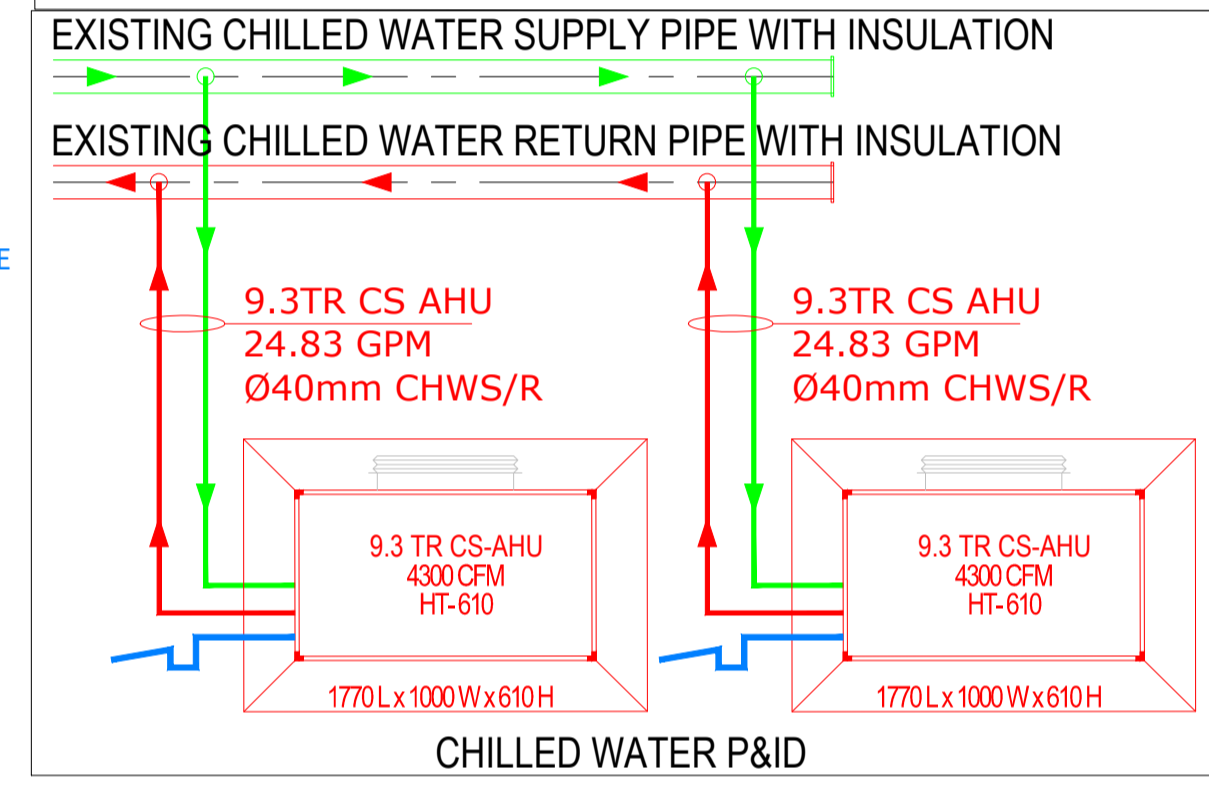


**Aura Dezyne**  
C-45, North Bombay C.H.S.,  
Juhu, Mumbai - 400049.  
Tel:- +91 22 26127475

**PROJECT:**  
DIAL PHASE 3A EXPANTION

**SHEET TITLE:**  
HVAC SCHEME LAYOUT FOOD HALL OF STORE 26 AT L4 LEVEL

NAME	DATE	SIGN
DRAWN BY: KIRAN PM		
CHECKED BY: SAFDAR S		
APPROVED BY:		
PROJECT No. Phase 3A Expantion		SHEET SIZE A1
ISSUE DATE 24-01-2024	SCALE	1 : 50
SHEET No.		REV. No.



RECTANGULAR DUCT 450x250 1500 CFM

A FALSE CEILING IS REQUIRED TO COVER THE KITCHEN EXHAUST FRESH AIR FAN

75 MM PELMET TO FOR AHU RETURN AIR

150 WIDE RETURN AIR GRILLE

Ø32MM U-TRAP WITH CONDENSATION DRAIN LINE CONNECT TO NEAREST DRAIN POINT

10# Ø300 ROUND DIFFUSERS(TYP.) 280 CFM EACH

3# Ø325 ROUND DIFFUSERS(TYP.) 480 CFM EACH

9.3TR CS AHU 24.83 GPM Ø40mm CHWS/R

RECTANGULAR DUCT Øx300 2880 CFM

150 WIDE RETURN AIR GRILLE

9.3 TR CS-AHU 4300 CFM HT-610

75 MM PELMET TO FOR AHU RETURN AIR

Ø32MM U-TRAP WITH CONDENSATION DRAIN LINE CONNECT TO NEAREST DRAIN POINT

9.3TR CS AHU 24.83 GPM Ø40mm CHWS/R