

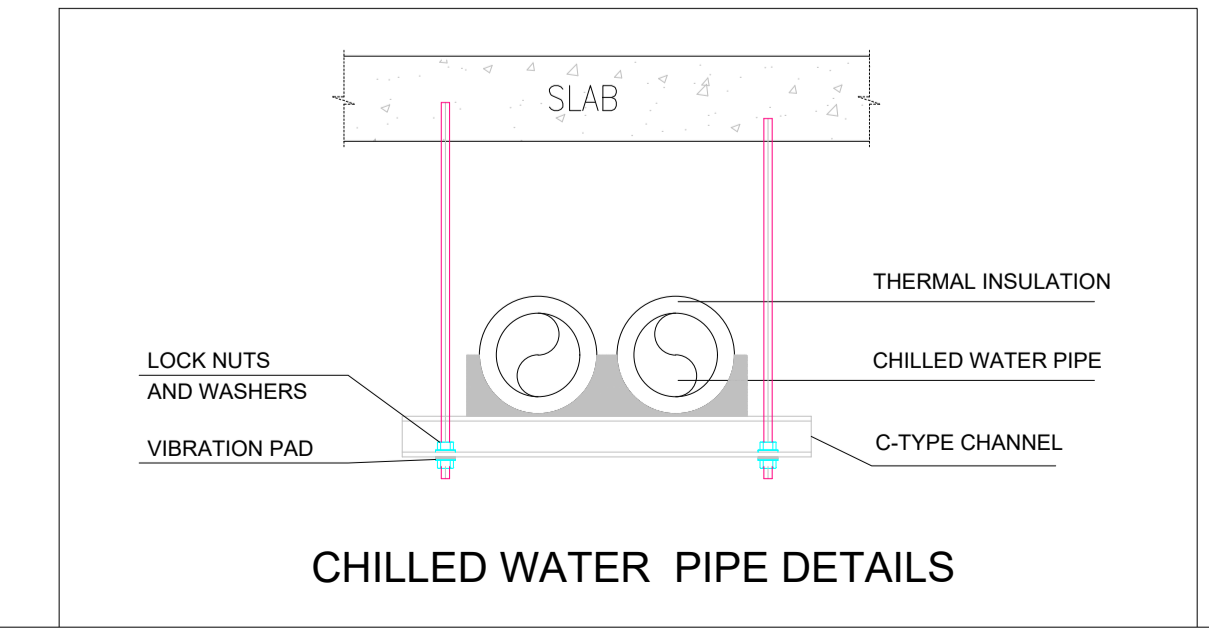
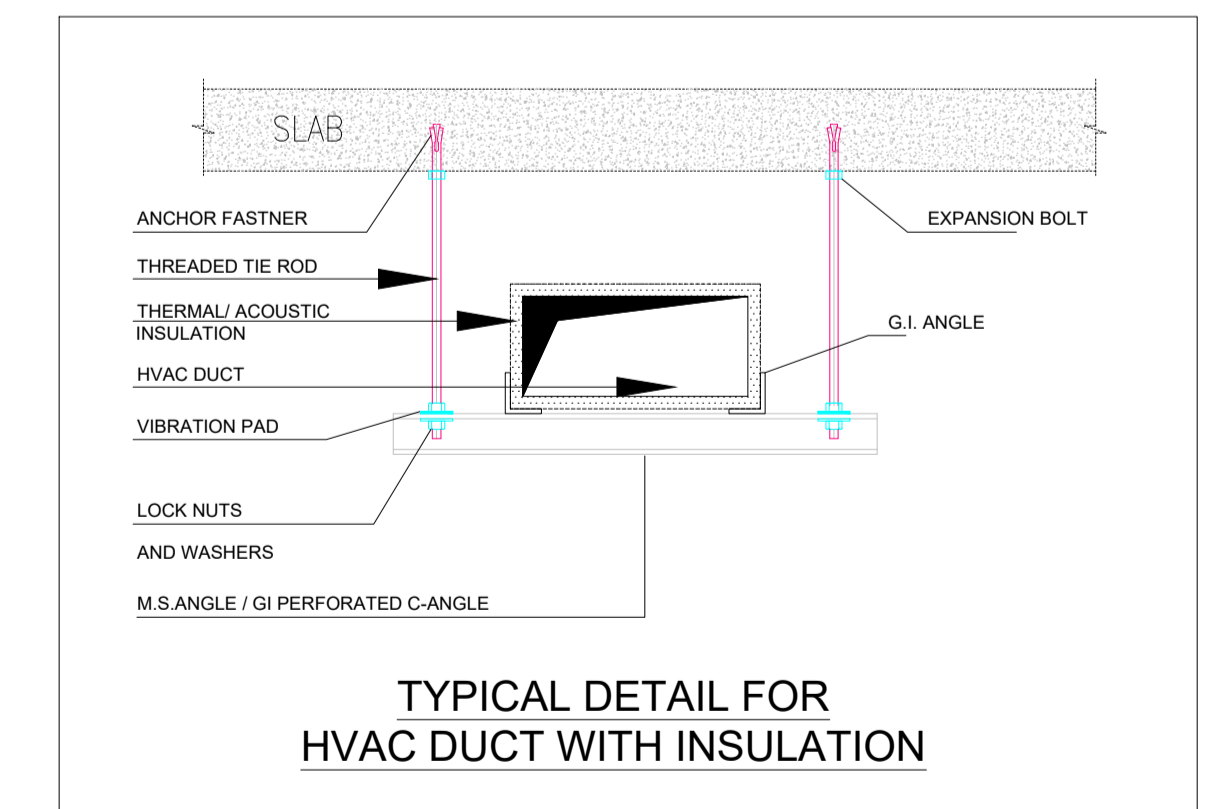
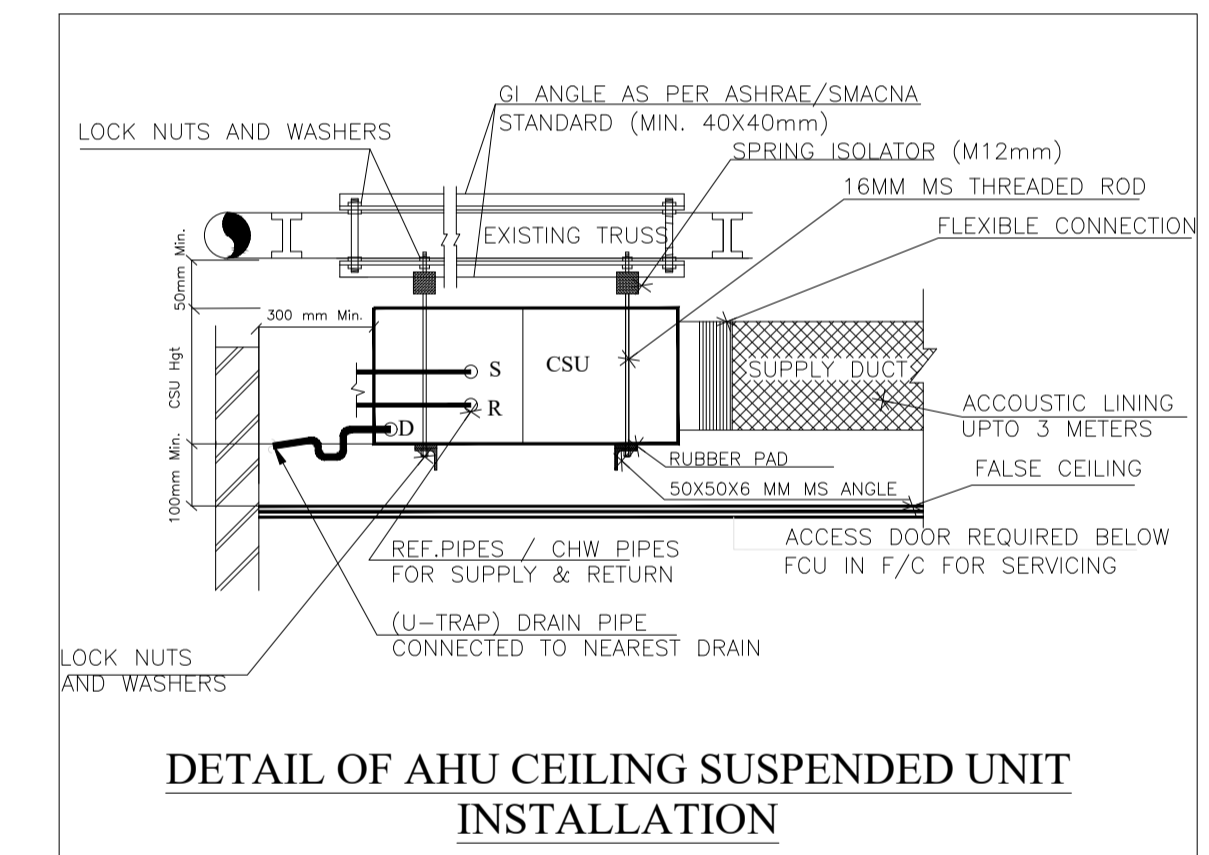
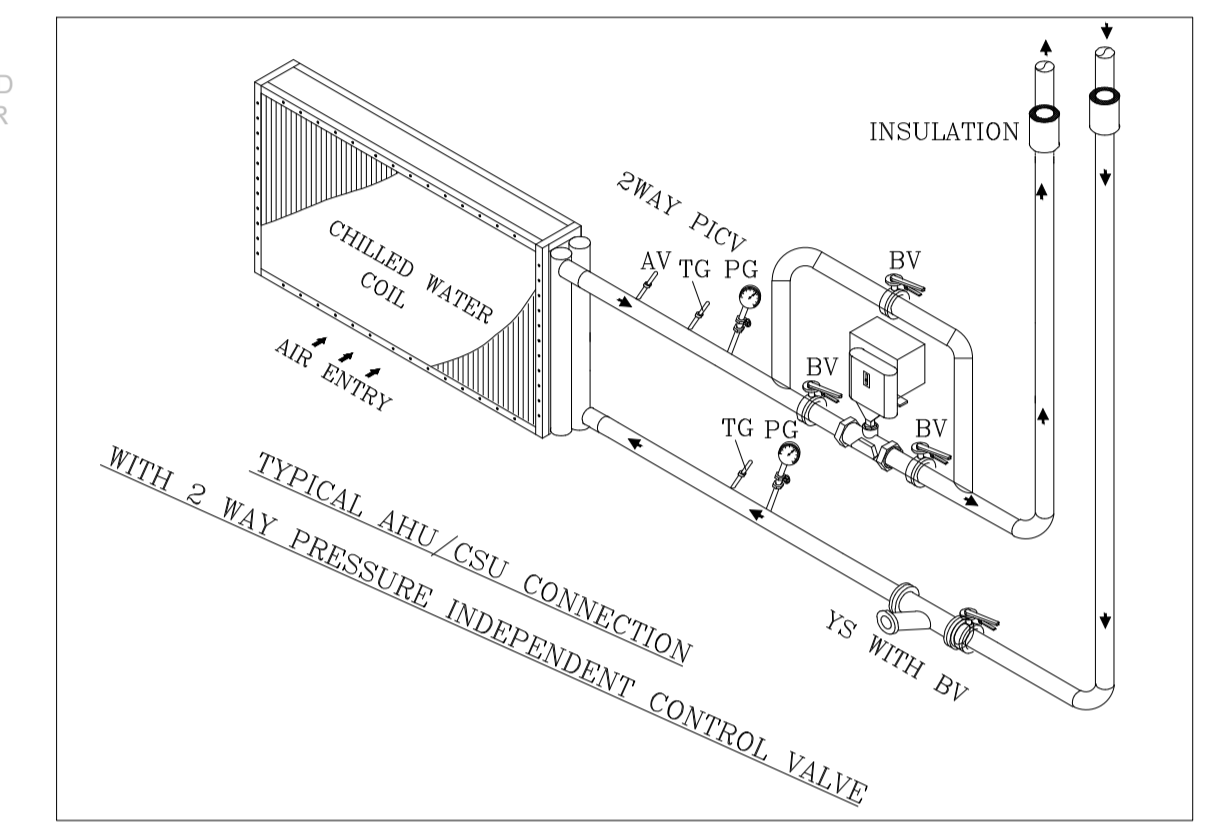
NO.	SYMBOL	DISCRIPTION
01.		SUPPLY AIR DUCT WITH THERMAL INSULATION
02.		SUPPLY AIR DUCT WITH ACOUSTIC INSULATION
03.		KITCHEN FRESH AIR DUCT
04.		KITCHEN EXHAUST AIR DUCT
05.		VOLUME CONTROL DAMPER
06.		CHILLED WATER SUPPLY PIPE
07.		CHILLED WATER RETURN PIPE
08.		DRAIN PIPE
09.		SUPPLY AIR DIFFUSER WITH COLLAR DAMPER
10.		RETURN AIR DIFFUSER WITH COLLAR DAMPER
11.		FRESH AIR GRILL WITH COLLAR DAMPER
12.		EXHAUST AIR GRILL WITH COLLAR DAMPER
11.		CEILING SUSPENDED AIR HANDLING UNIT

GENERAL NOTES
 1. THIS DRAWING IS PROPERTY OF MEPTTEK CONSULTANTS.
 IT IS ISSUED SUBJECT TO RETURN UPON DEMAND AND IS NOT TO BE USED EXCEPT IN CONNECTION WITH THE PROJECT FOR WHICH IT IS INTEND.
 2. DO NOT SCALE DRAWING. USE FIGURED DIMENSIONS ONLY.

REVISIONS :

DATE	REVISION NO	DESCRIPTION
05.12.23	R0	HVAC SCHEME
09.12.23	R1	REVISED HVAC LAYOUT

- NOTES:-**
- Feasibility of construct for all works shall be concessionaire's responsibility without disturbing DIAL Assets/Services.
 - Ducting shall be installed in accordance with IS: 655. Thermal insulation on supply Air, Return Air & Fresh Air ducting shall be 19MM thick closed cell anti-microbial Class 'O' BS-476 part 6&7, FM approved Nitrile Rubber. Elastomeric insulation of thermal conductivity 0.033w/m²k at 0°C.
 - Condensate drain pipe shall be conforming to IS: 4985 class '3' UPVC piping. UPVC solvent cement conforming to ASTM D-2564 shall be used for joints of UPVC piping. Thermal insulation on condensate drain piping shall be 25mm thick. Closed cell antimicrobial class 'O' BS-476 part 6&7, FM approved nitrile rubber elastomeric insulation of thermal conductivity 0.033w/m²k at 0°C.
 - All materials / items to be used t site are subjected to prior inspection and approval from DIAL-Engg. Data sheets wrt all material need to be submitted for prior approval. Test certificate wrt all materials needs to be submitted prior to installation during MIR process.
 - Test certificates wrt all materials need to be submitted prior to installation during MIR process.
 - Approved makes for AHU section are VTS, ZECO & WAVES. Approved makes for grille, diffusers, louvers, VCD are CARRYAIRE, SYSTEMAIR, DYNACRAFT, AIRMASTER.
 - Turning/splitter vanes shall be provided wherever shown in drawing / as per SMACNA standard.
 - Duct joint are to be provided with 6mm thick neoprene gasket and silicon sealant.
 - Avoid flanges, dampers or any other ducting joint below beam / capital.
 - There should not be any electrical panel, Equipments below the AC machine.
 - Provision of removable or openable ceiling for servicing and maintenance of AC units, dampers etc. shall be considered.
 - Duct, CHW / Ref piping & drain piping shall be supported at regular interval at a distance of 2.4meter.



KITCHEN VENTILATION SYSTEM

AREA	AREA IN (sq.ft)	HEIGHT	ACPH	CFM	TYPE	FAN	CFM	QTY.	TOTAL CFM
SERVICE ROOM	116	9.2	30	532	Kitchen Exhaust	Cabinet Type Exhaust Air Fan	650	1	650
DUSTBIN				100					
				479	Kitchen Fresh	Cabinet Type Fresh Air Fan	500	1	500

PROJECT :
SHOP NO-17 @ L-5, DELHI AIRPORT

CLIENT :
 TFS

ISSUED FOR :
 APPROVAL

DATE :
 09.12.2023

DRAWN BY : ROSHAN **SCALE :** NTS
CHECKED BY : SAFDAR

TITLE :
 HVAC SECTION LAYOUT

DRAWING NO :
 MEPTTEK-SBW-HVAC-02

MEP CONSULTANTS :

 Sumer kendra, 209, opp. mahindra tower, worli, Mumabi-400018
 nimish.shah@mepttekconsultants.com

CLIENT :

EVERSUB India Pvt Ltd
 OFFICE :-
 SUBWAY SYSTEMS INDIA PRIVATE LIMITED,
 Awfis Space Solutions, 3rd Floor, Tower-B,
 Unitech Cyber Park, Grurgram, Haryana,
 India-122002.