

650 CFM CABINET TYPE EXHAUST AIR FAN L920XW690XH575

SA DUCT 2000 CFM 30"x10"

CEILING SUSPENDED

AHU 4.12 TR 2000 CFM

11 GPM Ø32 CHWS&R CONNECT TO EXISTING CHW PIPE

DRAIN PIPE-Ø32 EXHAUST AIR DUCT CONNECT TO EXISTING EXHAUST AIR DUCT

EXISTING EXHAUST AIR DUCT TREATED FRESH AIR DUCT 200 CFM

10"x6" CONNECT TO EXISTING TFA DUCT FRESH AIR DUCT

500 CFM 12"x8" CONNECT TO EXISTING FRESH AIR DUCT

01 NOS. 100 CFM KITCHEN EXHAUST AIR GRILLE 6"x6"

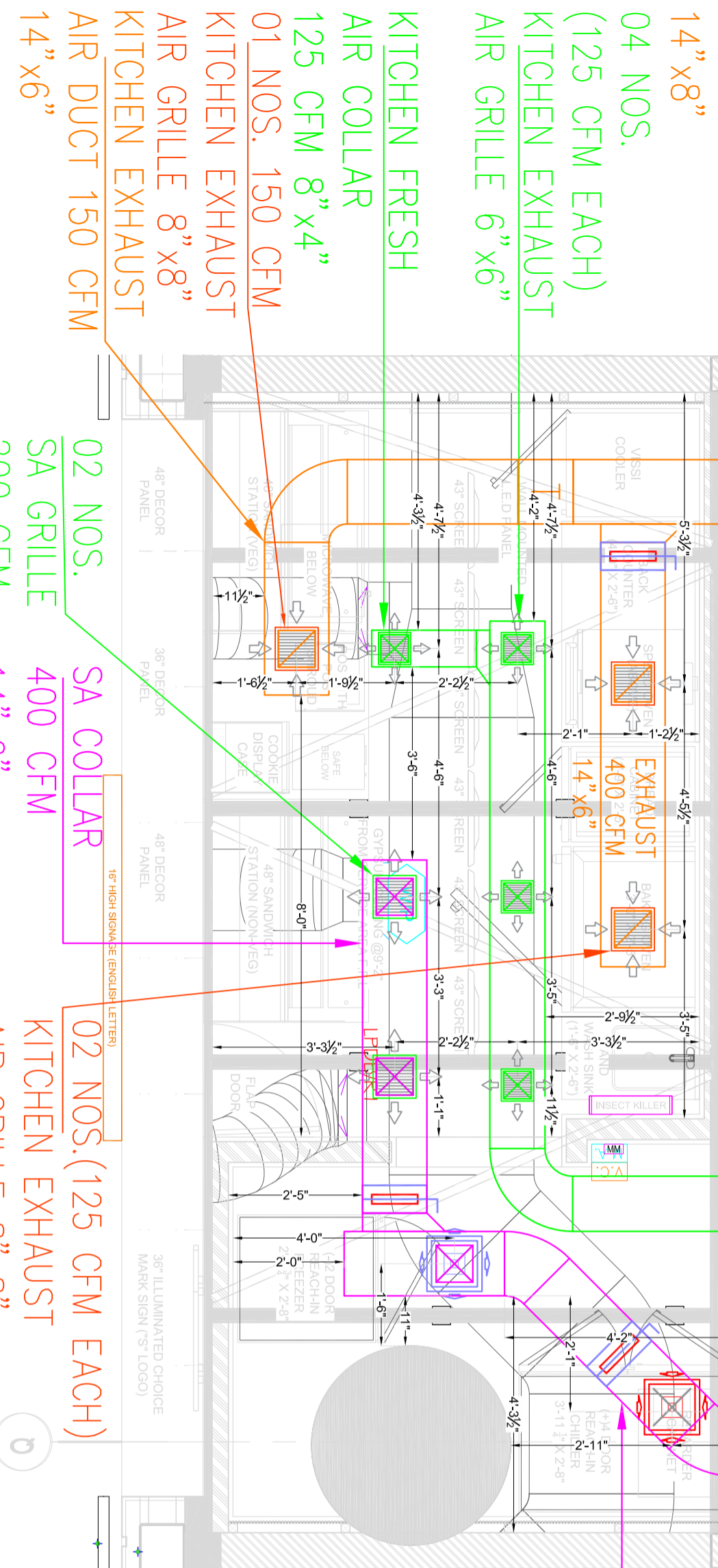
KITCHEN EXHAUST AIR DUCT 650 CFM 14"x8"

04 NOS. (125 CFM EACH) KITCHEN EXHAUST AIR GRILLE 6"x6"

KITCHEN FRESH AIR COLLAR 125 CFM 8"x4"

01 NOS. 150 CFM KITCHEN EXHAUST AIR GRILLE 8"x8"

AIR DUCT 150 CFM 14"x6"



SA DUCT 2000 CFM 30"x10"

(TYPICAL) SA COLLAR 200 CFM 10"x6"

08 NOS. SA DIFFUSER 8"x8"

200 CFM EACH 08 NOS. RA DIFFUSER 8"x8"

500 CFM CABINET TYPE FRESH AIR FAN L920XW690XH575

KITCHEN FRESH AIR DUCT 500 CFM 12"x8"

SA DUCT 600 CFM 14"x8"

02 NOS. (125 CFM EACH) KITCHEN EXHAUST AIR GRILLE 8"x8"

02 NOS. 400 CFM SA COLLAR 14"x6"

02 NOS. (125 CFM EACH) KITCHEN EXHAUST AIR GRILLE 8"x8"

HVAC LEGEND

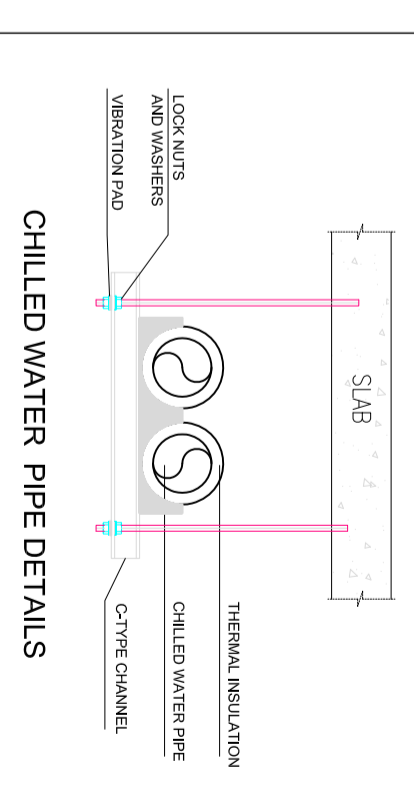
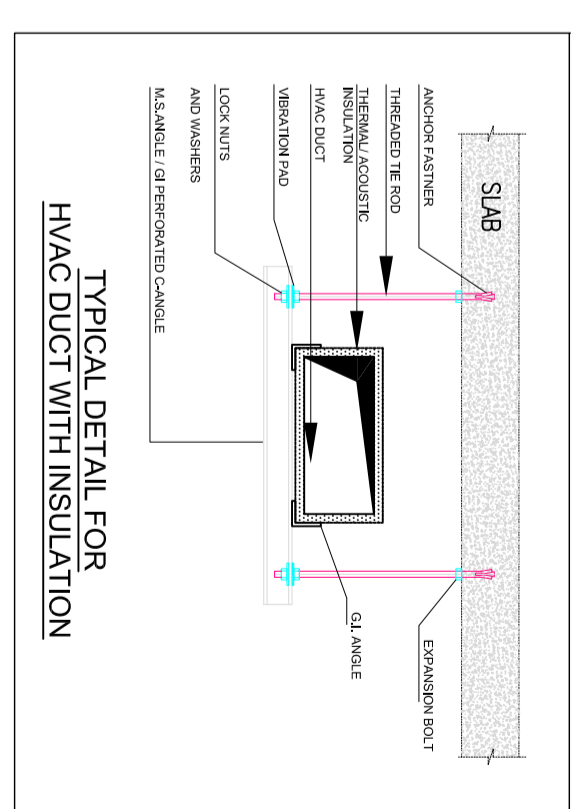
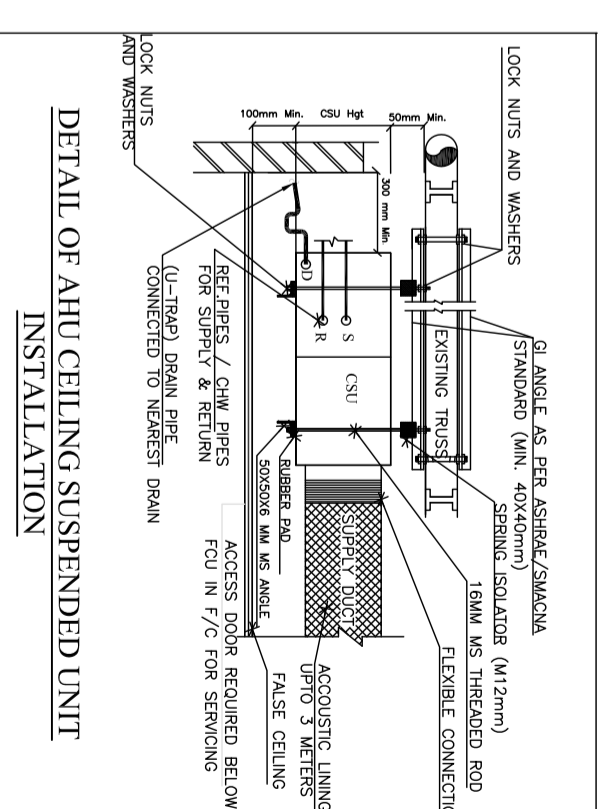
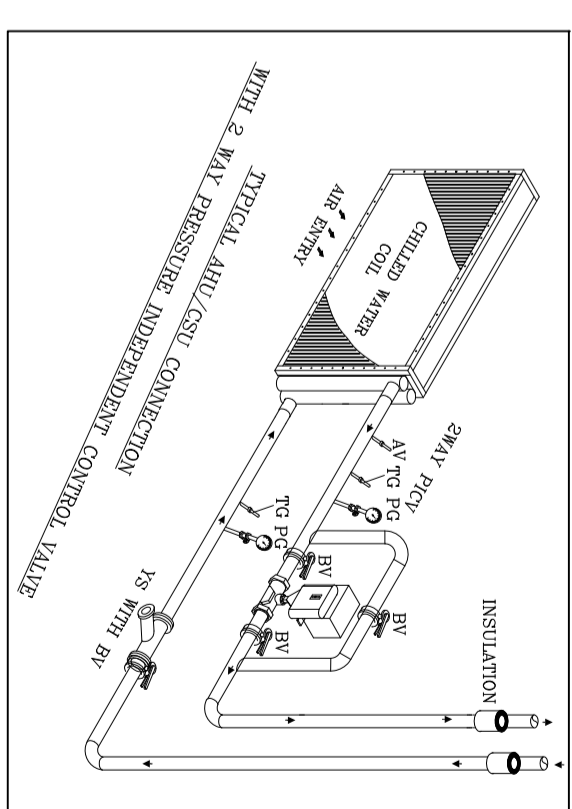
| NO. | SYMBOL | DISCRPTION |
|-----|--------|--|
| 01. | | SUPPLY AIR DUCT WITH THERMAL INSULATION |
| 02. | | SUPPLY AIR DUCT WITH ACOUSTIC INSULATION |
| 03. | | KITCHEN FRESH AIR DUCT |
| 04. | | KITCHEN EXHAUST AIR DUCT |
| 05. | | VOLUME CONTROL DAMPER |
| 06. | | CHILLED WATER SUPPLY PIPE |
| 07. | | CHILLED WATER RETURN PIPE |
| 08. | | DRAIN PIPE |
| 09. | | SUPPLY AIR DIFFUSER WITH COLLAR DAMPER |
| 10. | | RETURN AIR DIFFUSER WITH COLLAR DAMPER |
| 11. | | FRESH AIR GRILL WITH COLLAR DAMPER |
| 12. | | EXHAUST AIR GRILL WITH COLLAR DAMPER |
| 11. | | CEILING SUSPENDED AIR HANDLING UNIT |

GENERAL NOTES
 1. THIS DRAWING IS PROPERTY OF MEPTEK CONSULTANTS.
 IT IS ISSUED SUBJECT TO RETURN UPON DEMAND AND IS NOT TO BE USED EXCEPT IN CONNECTION WITH THE PROJECT FOR WHICH IT IS INTEND.
 2. DO NOT SCALE DRAWING. USE FIGURED DIMENSIONS ONLY.

REVISIONS:

| DATE | REVISION NO | DESCRIPTION |
|----------|-------------|---------------------|
| 05.12.23 | R0 | HVAC SCHEME |
| 09.12.23 | R1 | REVISED HVAC LAYOUT |

NOTES:
 • Feasibility of construct for all works shall be concessionaire's responsibility without disturbing DIAL Assets/Services.
 • Ducting shall be installed in accordance with IS: 6553:Thermal insulation for supply air, return air & exhaust air ducts specified by BMAA online supply air, return air & exhaust air ducts part 682, FM approved Nitrile Rubber. Elastomeric insulation of thermal conductivity 0.033w/m.k at 0°C.
 • Condensate drain pipe shall be conforming to IS: 4985 class 3 UPVC piping. UPVC solvent cement conforming to ASTM D-2564 shall be used for joints of UPVC piping. Thermal insulation on condensate drain piping shall be 25mm thick closed cell antimicrobial class 0 BS-476 part 682, FM approved nitrile rubber elastomeric insulation of thermal conductivity 0.033w/m.k at 0°C.
 • All materials / items to be used shall be subjected to prior inspection and approval from DIAL-Engg. Data sheets w/rt all certificates shall be submitted for prior approval. Test certificates w/rt all materials to be submitted prior to installation during MIP process.
 • Test certificates w/rt all materials need to be submitted prior to installation during MIP process.
 • Approved makers for grille, diffusers, louvers, VCD are CAR/MIRE, SYSTEMAIR, DYNACRAFT, AIRMASTER.
 • Turning/splitter vanes shall be provided wherever shown in drawing / as per SMACNA standard.
 • Duct joint are to be provided with 6mm thick neoprene gasket and silicon sealant.
 • Avoid hangers, dampers or any other ducting joint below beam level.
 • There should not be any electrical panel. Equipments below the AC machine.
 • Provision of removable or operable ceiling for servicing and maintenance of AC units, dampers etc. shall be considered.
 • Duct, CHW / Ref piping & drain piping shall be supported at regular interval at a distance of 2.4meter.



SHOP NO-17 @ L-5, DELHI AIRPORT

CLIENT: TFS

ISSUED FOR: APPROVAL

DATE: 09.12.2023

DRAWN BY: ROSHAN

CHECKED BY: SARDAR

TITLE: HVAC LAYOUT

DRAWING NO: MEPTEK-SBW-HVAC-01

MEP CONSULTANTS:

MEPTEK CONSULTANTS
 Sumit kandra, 209 opp. mahindra tower, worli, Mumbai-400018
 n i m s h . s h a @ m e p t e k c o n s u l t a n t s . c o m

SUBWAY
 EVERSUB India Pvt Ltd
 OFFICE :- SUBWAY SYSTEMS INDIA PRIVATE LIMITED,
 Awfis Space Solutions, 3rd Floor, Tower-4, Utech Cyber Park, Gurugram, Haryana, India-122002.