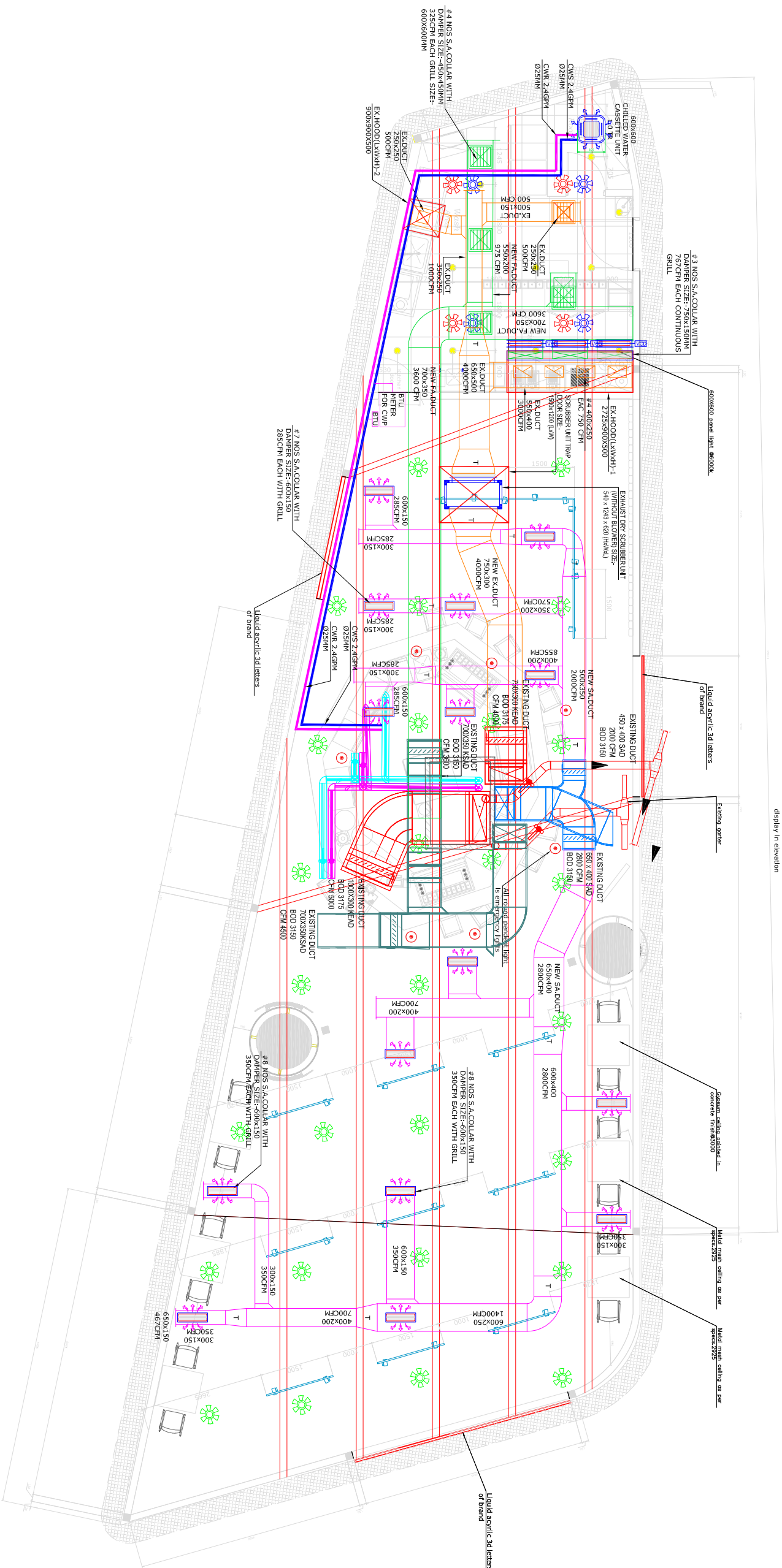


Bar represents Lights
Points to be
coordinated with
display in elevation



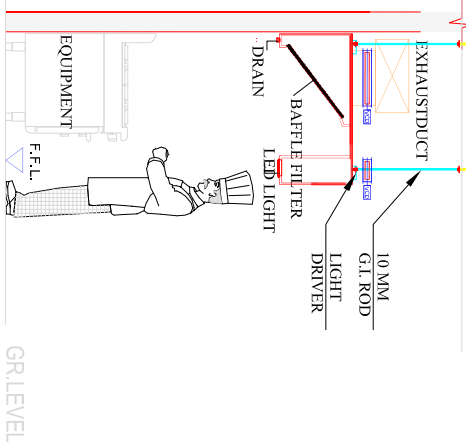
KITCHEN CFM DETAIL CHART (AS PER SITE)

HOOD NO.	EQUIPMENT DESCRIPTION	CFM
HOOD-01 110" X 36" X 20" (BOX TYPE HOOD)	4 BURNER RANGE WITH DEEP FRYERS, SIDE TABLE, HOT PLATE	3500
HOOD-02 36" X 36" X 20" (BOX TYPE HOOD)	DISH WASHING MACHINE	500
TOTAL EXHAUST CFM		4000
TOTAL FRESH AIR 85%		3600

AS PER SITE KITCHEN CONSULTANT

SR. NO.	HOOD SIZE	CFM
EX-01	2725 X 900 X 500	2700
EX-02	900 X 900 X 500	500
	EXHAUST CFM	3200
	FRESH AIR CFM	2560

**TYPICAL HOOD SECTION
(BOX TYPE - SINGLE SKIN)**



- NOTES:-**
- Feasibility of construct for all works shall be concessionaire's responsibility without disturbing Assets/Services.
 - Ducting shall be installed in accordance with IS: 655. Thermal insulation on supply Air, Return Air & Fresh Air ducting shall be 19MM thick closed cell anti-microbial Class 'O' BS-476 part 6&7, FM approved Nitrile Rubber. Elastomeric insulation of thermal conductivity 0.033w/m² K at 0°C.
 - Condensate drain pipe shall be conforming to IS: 4985 class '3' UPVC piping. UPVC solvent cement conforming to ASTM D-2564 shall be used for joints of UPVC piping. Thermal insulation on condensate drain piping shall be 25mm thick. Closed cell antimicrobial class 'o' BS-476 part 6&7, FM approved nitrile rubber elastomeric insulation of thermal conductivity 0.033w/m² K at 0°C.
 - All materials / items to be used at site are subjected to prior inspection and approval from Airport-Engg team. Data sheets wrt all material need to be submitted for prior approval. Test certificate Wrt all materials needs
 - Test certificates wrt all materials need to be submitted prior to installation during MIR process.
 - Approved makes for AHU section are VTS, ZECO & WAVES. Approved makes for grille, diffusers, louvers, VCD are CARRAIRE, SYSTEMAIR, DYNACRAFT, AIRMASTER.
 - Turning/splitter vanes shall be provided wherever shown in drawing/ as per SWACNA standard.
 - Duct joint are to be provided with 6mm thick neoprene gasket and silicon sealant.
 - Avoid flanges, dampers or any other ducting joint below beam / capital.
 - There should not be any electrical panel, Equipments below the AC machine.
 - Provision of removable or operable ceiling for servicing and maintenance of AC units, dampers etc. shall be considered.
 - Duct, CHW / Ret piping & drain piping shall be supported at regular interval at a distance of 2.4meter.

HVAC LEGENDS

NO.	SYMBOL	DESCRIPTION
01	[Green rectangle]	KITCHEN FRESH AIR RECTANGULAR DUCT
02	[Orange rectangle]	KITCHEN EXHAUST AIR RECTANGULAR DUCT
03	[Purple rectangle]	SUPPLY AIR ELIPTICAL DUCT WITH ACOUSTIC INSULATION
04	[Blue rectangle]	FRESH AIR DUCT
05	[Red rectangle]	FIRE DAMPER
06	[Green rectangle]	VOLUME CONTROL DAMPER
07	[Green rectangle]	FRESH AIR GRILLE
08	[Green rectangle]	EXHAUST AIR GRILLE
09	[Blue rectangle]	LINEAR GRILLE
10	[Blue rectangle]	WALL CUTOUT
11	[Red rectangle]	EXHAUST FAN
12	[Red rectangle]	FRESH AIR FAN
13	[Blue rectangle]	SCRUBBER UNIT

REVISION:-

NO.	DESCRIPTION	DATE
R0.	FOR APPROVAL	28-08-2024

- GENERAL NOTES:**
1. ALL DIMENSIONS ARE IN MM.
 2. ALL B.O.D. (BOTTOM OF DUCT & CENTER LINE LEVATION) ARE WITH RESPECT TO DATUM FLOOR LEVEL.
 3. DO NOT SCALE THE DRAWING. ONLY WRITTEN DIMENSIONS TO BE FOLLOWED.
 4. THIS DRAWING IS A RIGHT & PROPERTY OF MEPTK NOT TO BE PRODUCED, COPIED, HANDED OVER TO THIRD PARTY OR USED FOR ANY OTHER PURPOSE OTHER THAN FOR WHICH IT IS INTENDED AND REMAIN OUR SOLE PROPERTY.
 5. ALL DIMENSIONS SHALL BE VERIFIED ON SITE PRIOR TO START OF WORK

ARCH:

Travel Food Services Pvt Ltd
Shiv Sagar Estate, A-Block, 1st floor, A.B.
Road Worli, Mumbai - 400 018
INDIA.
www.travelfoodservices.com

CLIENT:

HONK
HONK Partners
BUDWEISER HYDRABAD
PROJECT:
BUDWEISER - HYDRABAD
DRWN: S.V
CHKD: SUNILK
DATE: 24.08.2024
SCALE: NTS
DRAWING NUMBER:
BUDWEISER@BU-AC-01
DRAWING NAME:
HYACLAYOUT
MEP CONSULTANTS:
MEPTEK CONSULTANTS
Sumit Kundra, 209, opp. mahindra tower, worli, Mumbai-400018
n.i.m.i.s.h.a.h@mepteconsultants.com