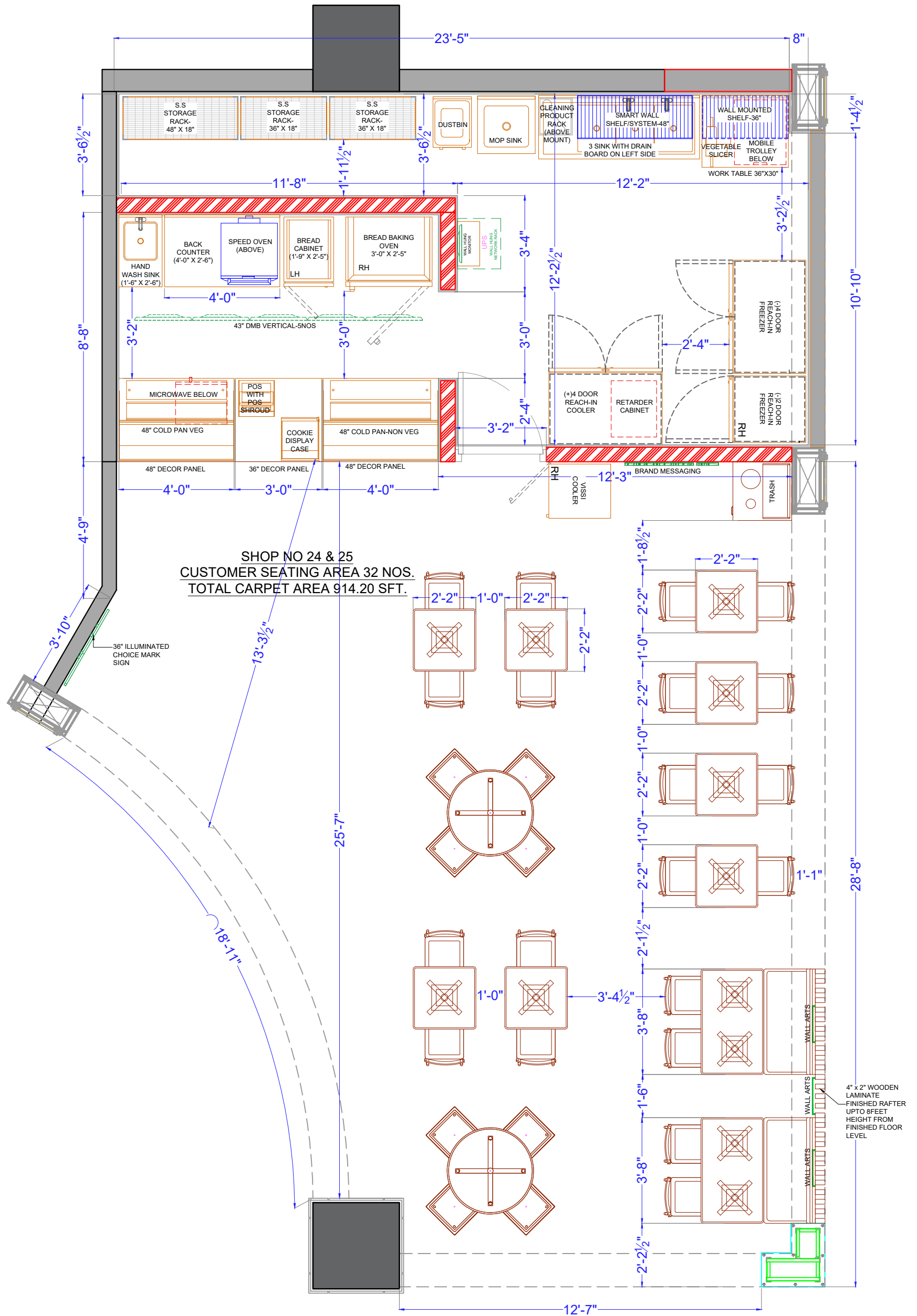


AHMEDABAD AIRPORT



- * STORE FORMAT=AIRPORT KIOSK
- * CARPET AREA= 914.20 SQFT.
- * CUSTOMER AREA=567.84 SQFT
- * SERVICE AREA=98.10 SQFT
- * BOH AREA=248.26 SQFT

- * DIMENSIONS= 41'-0" X 23'-5"
- * CEILING HT. (BOTTOM OF CEILING)=11'-6"

* TOTAL SEATING=32 NOS.

* DMB= 5 NOS. 43" SCREEN (VERTICAL) @6'-6" BOTTOM FROM CUSTOMER AREA F.FL

SITE:
AHMEDABAD

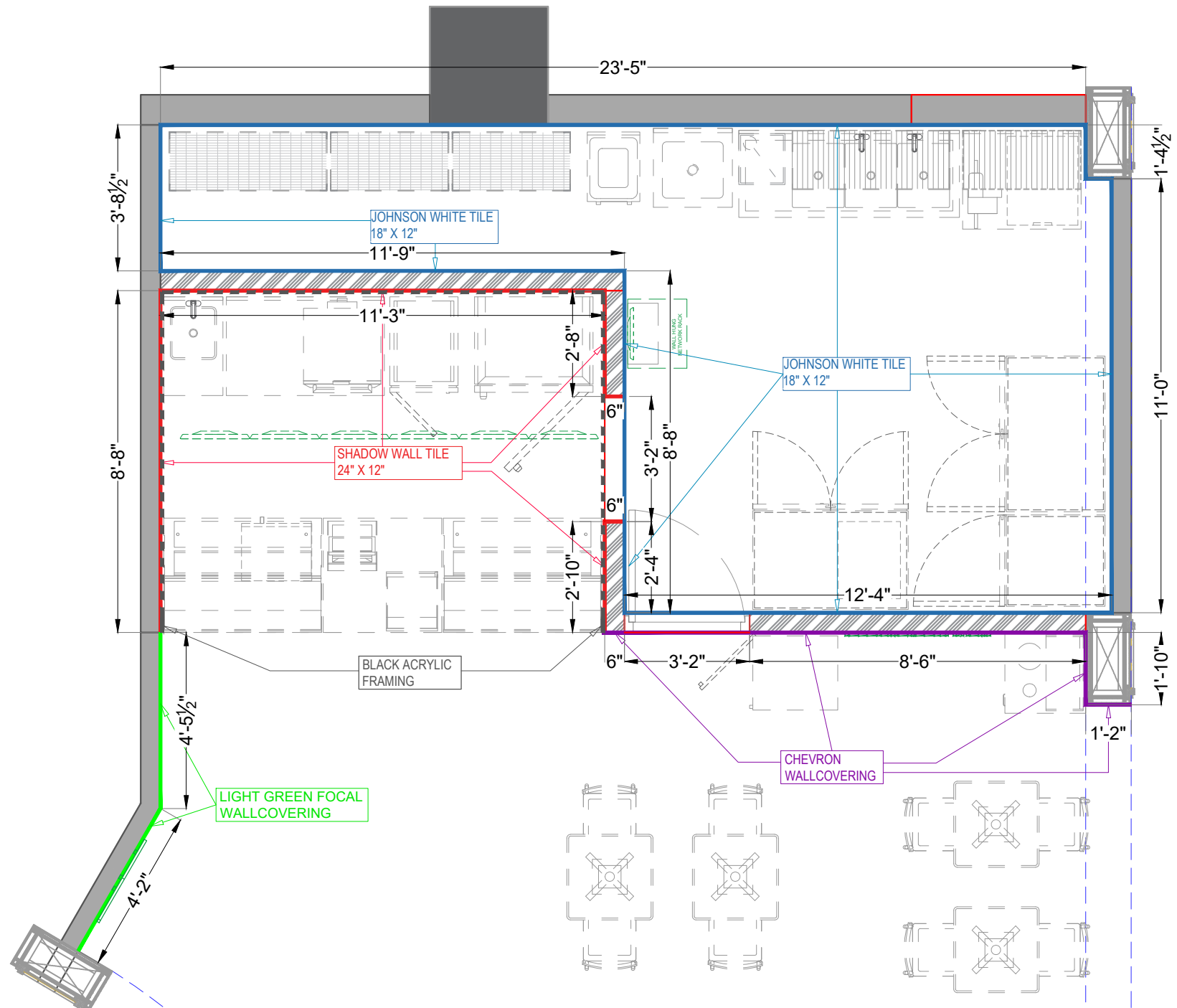
DRAWING TITLE:
EQUIPMENT & FURNITURE LAYOUT, OPTION-3

MADE BY: AASTHA

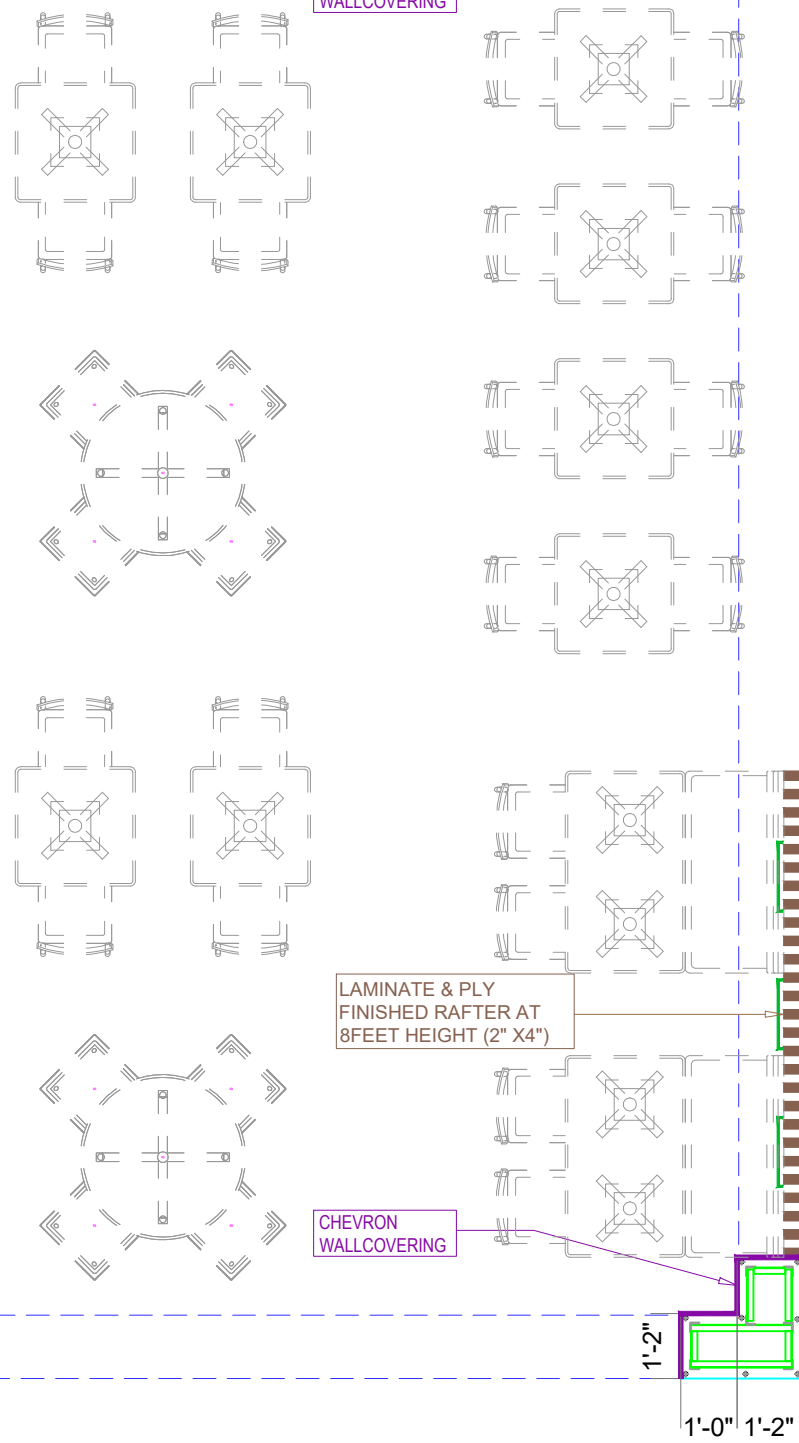
DATE: 20th Oct 2023 RO 01

SUBWAY
EVERSUB India Pvt Ltd

OFFICE :-
SUBWAY SYSTEMS INDIA PRIVATE LIMITED,
Awfis Space Solutions, 3rd Floor, Tower-9,
Unitech Cyber Park, Gurgaon, Haryana,
India-122002.



WALL FINISHES		
#	MATERIAL NAME	AREA PER SFT
01	LIGHT GREEN FOCAL WALLCOVERING	103.50
02	WOODEN TILE 4'-0" X 0-8"	0
03	CHEVRON WALLCOVERING	293.00
04	SHADOW WALL TILE 24" X 12"	289.50
05	JOHNSON-WHITE TILE 18"X 12"	797.50
06	BLACK DATUM MOLDING 101.6 X 2438 X 3 MM	7
07	CORNER GUARD (For wallpaper corners) EA./12FT	2
EVERY FINISH WILL BE COMPLETED UP TO CEILING HEIGHT FROM FINISHED FLOOR LEVEL.		
THIS AREA AS PER DRAWING WASTAGE NOT INCLUDED		



SITE:
AHMEDABAD, AIRPORT

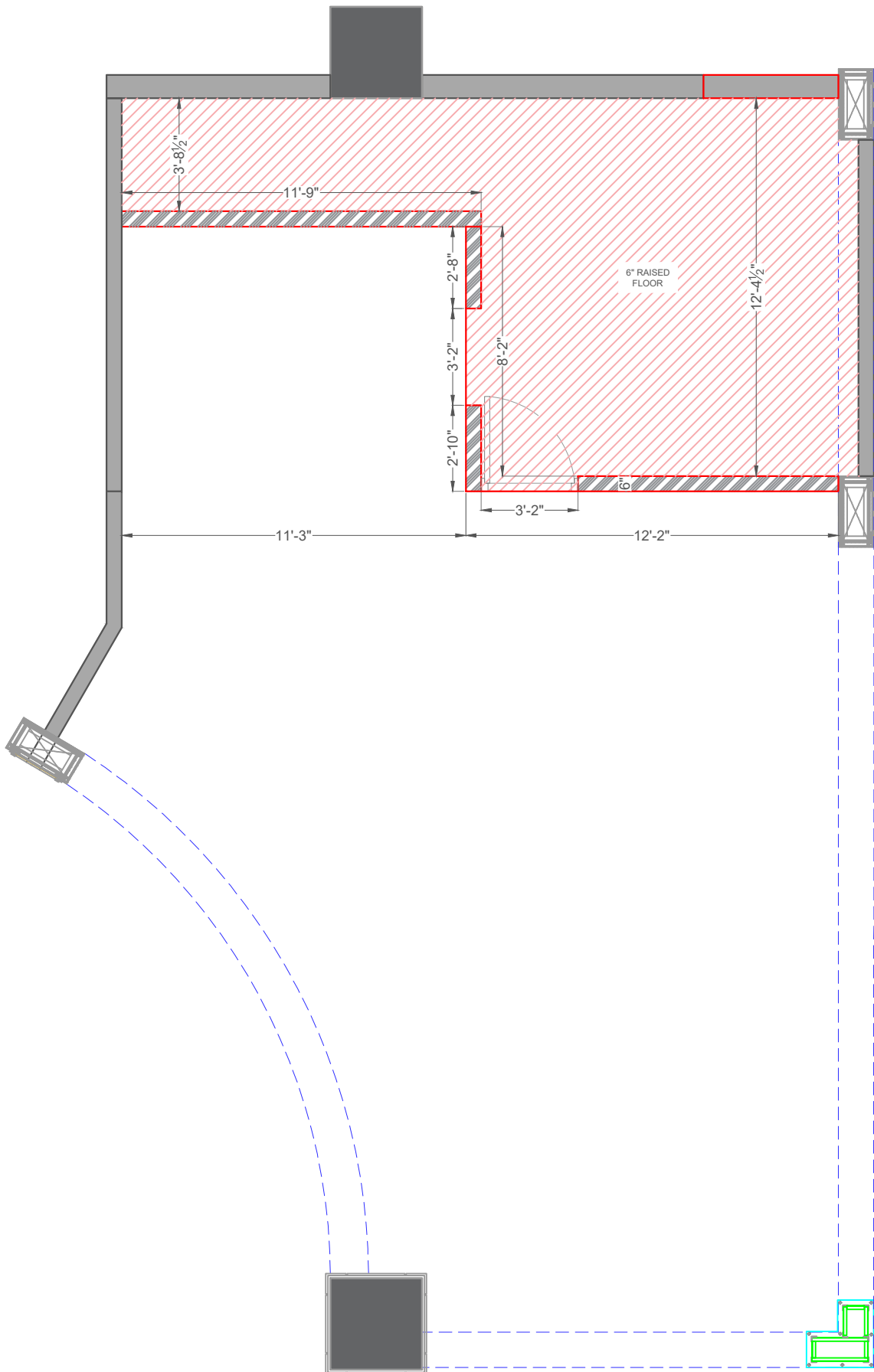
DRAWING TITLE:
WALL FINISHES_
REV-1



MADE BY: **AASTHA**

DATE: **20-10-23** RD: **04**

SUBWAY
EVERSUB India Pvt Ltd

OFFICE :-
SUBWAY SYSTEMS INDIA PRIVATE
LIMITED,
Awfis Space Solutions, 3rd Floor, Tower-9,
Unitech Cyber Park, Gurgaon, Haryana,
India-122002.



CIVIL LEGEND		
SYMBOL	DESCRIPTION	QTY
	EXISTING BRICK WALL	-
	PROPOSED 11'-6" HEIGHT 6" BRICK WALL WITH PLASTER	372.00 SQ FT

NOTE:

- PLEASE REFER PLUMBING & DUCTING LAYOUT FOR HEIGHT
- ALL HEIGHT ARE FROM FINISH FLOOR LEVEL

SITE:
AHMEDABAD, AIRPORT

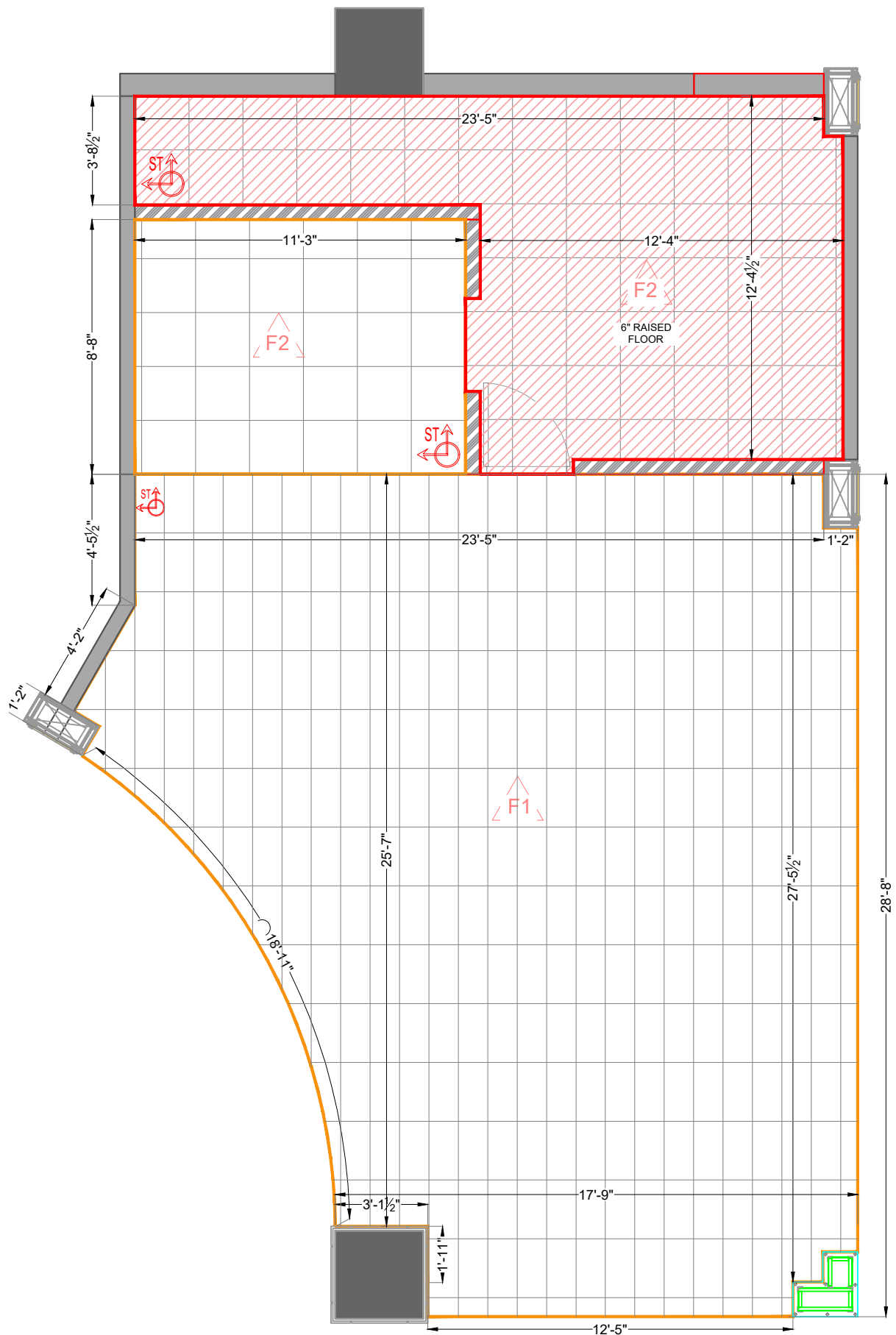
DRAWING TITLE:
CIVIL LAYOUT

MADE BY: AASTHA

DATE: 04-10-23 **RO:** 06

SUBWAY
EVERSUB India Pvt Ltd

OFFICE :-
SUBWAY SYSTEMS INDIA PRIVATE
LIMITED,
Fourth Floor Solutions, 3rd Floor, Tower-B,
Umicore Cyber Park, Gurugram, Haryana,
India-122002.



FLOOR SCHEDULE

NOTE: THE SUBWAY STORE DESIGN DEPARTMENT WILL NOT ACCEPT RESPONSIBILITY FOR ANY INACCURACIES. THE CALCULATIONS PROVIDED BELOW MUST BE VERIFIED BY THE G.C. AND FRANCHISE OWNER BEFORE ANY ORDER FOR THESE MATERIALS IS ACCEPTED AND PLACED.

SYMBOL	ROOM	MATERIAL	AREA IN SFT.
F2	SERVICE AREA / BOH	POLISHED KOTA STONE 22" X 22"	228
F1	CUSTOMER AREA 1	IVO IMP KASHAN CAFE- SILVER SANDS MAKE - SOMANY 12" X 24"	696

RAISED FLOOR IN BOH AREA

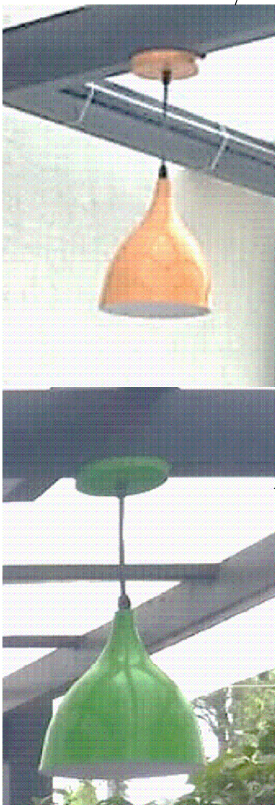
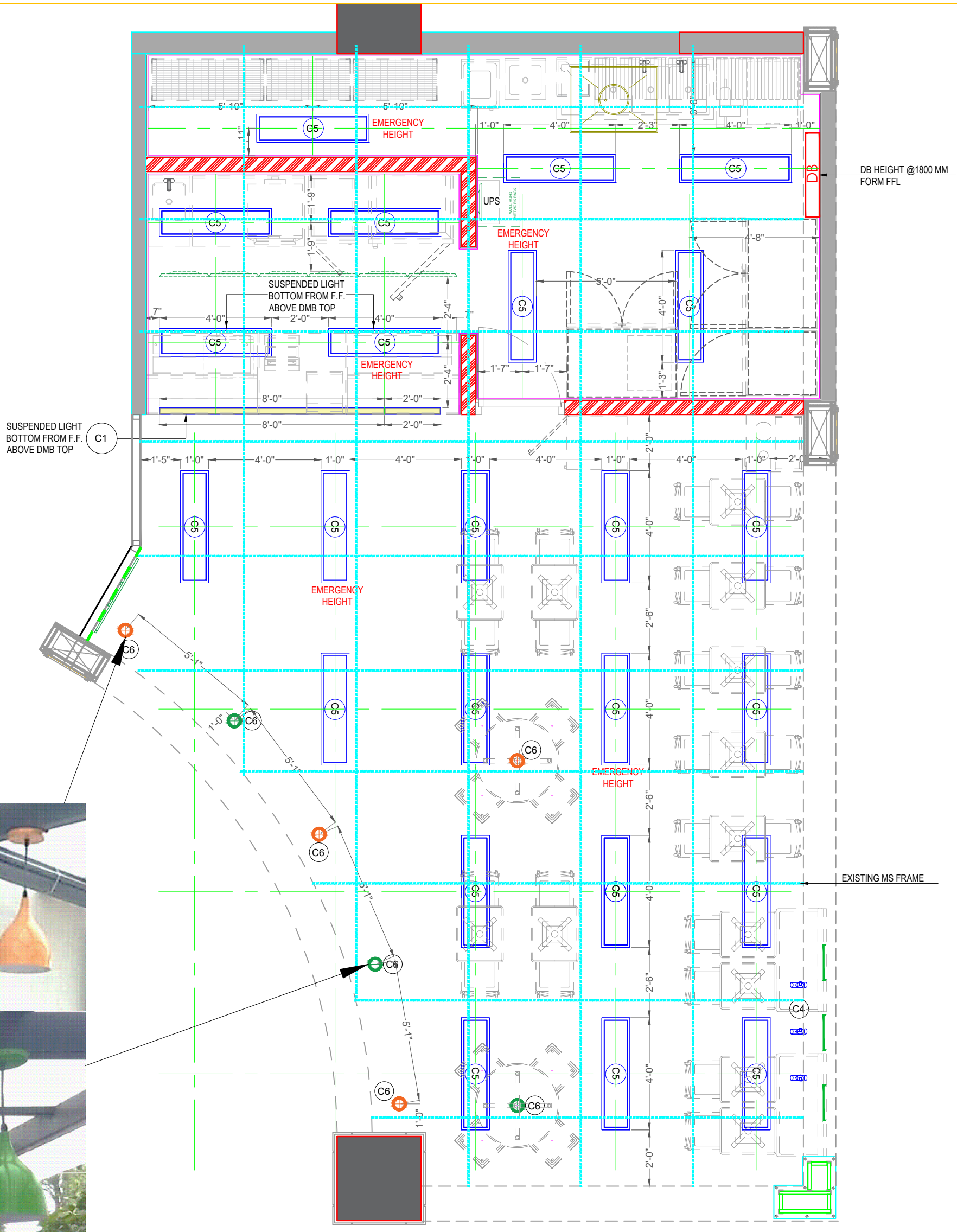
15% SKIRTING & WASTAGE INCLUDED IN THIS AREA

SITE: AHMEDABAD, AIRPORT

DRAWING TITLE: FLOORING LAYOUT-REV-1

MADE BY: AASTHA
DATE: 20-10-23 RO: 03

SUBWAY
EVERSUB India Pvt Ltd
OFFICE: SUBWAY SYSTEMS INDIA PRIVATE LIMITED, 4th Floor, Tower-B, Umesh Cyber Park, Gurugram, Haryana, India-122002.



REFERENCE IMAGE FOR LIGHT

CEILING FIXTURE AND LIGHTING SCHEDULE

IMAGE	#	MODEL	COUNT	DESCRIPTION	WATTAGE	TOTAL WATTS
	C1	SUSPENDED LINEAR CHANNEL LIGHT	1	8' LENGTHS, 72 W, JOINTER & ADDITIONAL STRING REQUIRE	72	1235
	C1	SUSPENDED LINEAR CHANNEL LIGHT	1	2' LENGTHS, 18 W, JOINTER & ADDITIONAL STRING REQUIRE	18	
	C3	115mm RECESSED DOWNLIGHT	0	RECESSED 115mm LED DOWNLIGHT. 10W, 220-240V, 3500K, 1000 LUMEN OUTPUT.	0	
	C4	MINI TL 2 LINE	03	WATTAGE 15W , CCT 3K, LIGHT SOURCE-CREE COB,1MTR. TRACK, COLOUR-GRAY POWDER COATED WITH SILVER REFLECTOR	45	
	C5	1200 X 300 MM SURFACE LED PANEL LIGHT	24	WATTAGE 40W	960	
	C6	PENDENT LIGHT	07	WATTAGE 20W	140	

NOTE-
1. ALL SURFACE LIGHT WILL FIXED ON EXISTING MS FRAME WORK

SITE:
AHMEDABAD, AIRPORT

DRAWING TITLE:
LIGHTING MARK-OUT LAYOUT_REV-1

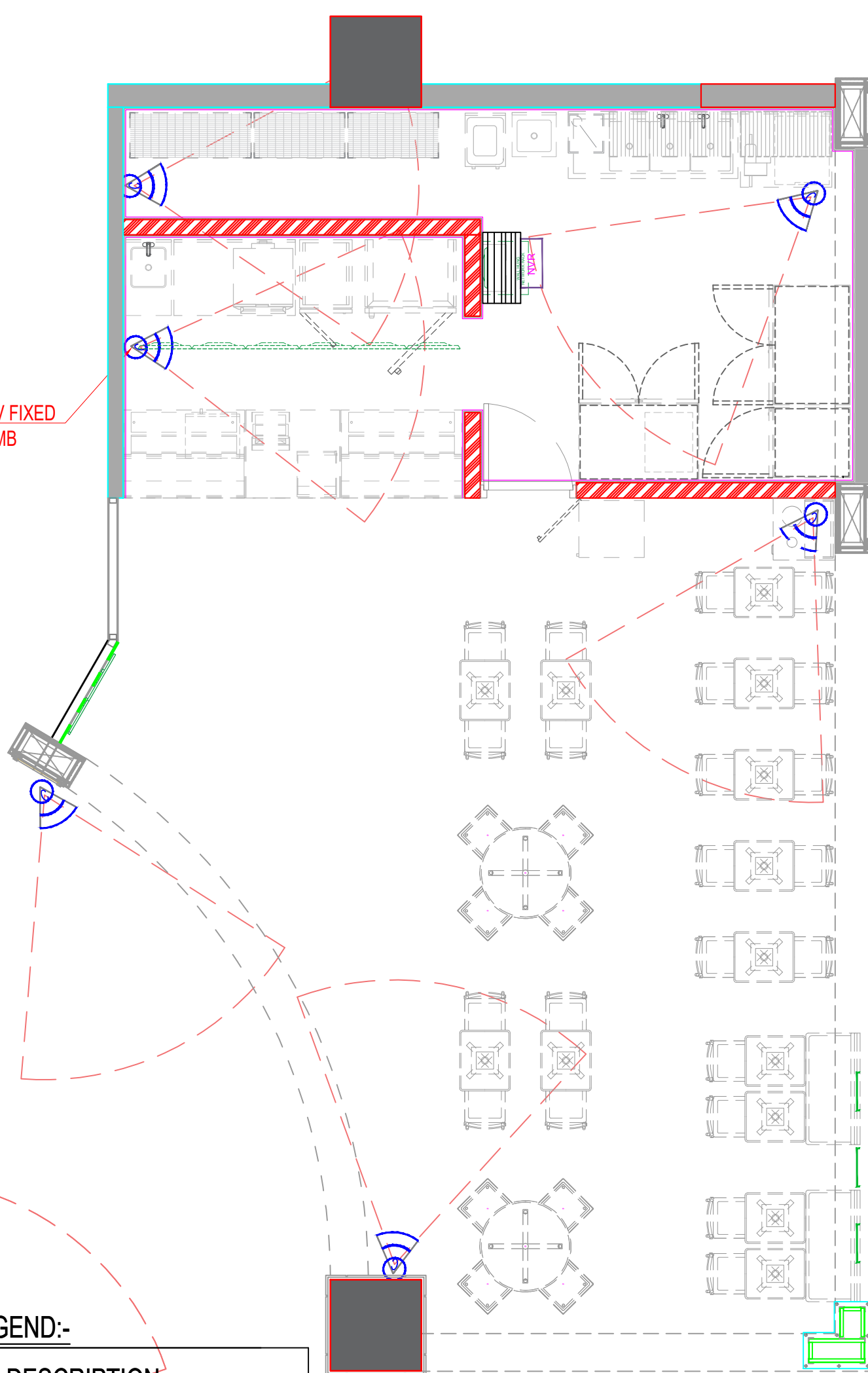
MADE BY: **AASTHA**

DATE: **20-10-23** RD: **04**

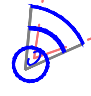


SUBWAY
EVERSUB India Pvt Ltd

OFFICE :-
SUBWAY SYSTEMS INDIA PRIVATE LIMITED,
Awfis Space Solutions, 3rd Floor, Tower-9,
Gintech Cyber Park, Gurgaon, Haryana,
India-122002.

THIS CCTV FIXED BELOW DMB



CCTV SYS LEGEND:-

SYMBOL	DESCRIPTION
	FIXED DOME CAMERA IR RANGE - FIXED CAMERA FROM FFL. 8'FT HEIGHT
	NVR, TWORK VIDEO RECORDER WILL BE KEPT INSIDE THE SERVER RAKC OR AS/IT TEAM
	SERVER RACK

1X25MM Ø CONDUIT, 7 NOS CAT-6 WIRES TO BE CONNECTED WITH NETWORK VIDEO RECORDER PROVIDED IN BOH AREA.

ADD ADDITIONAL CAT-6 POINT ABOVE DMB AREA & SERVER AREA @ 4FEET HEIGHT

SITE: **AHMEDABAD, AIRPORT**

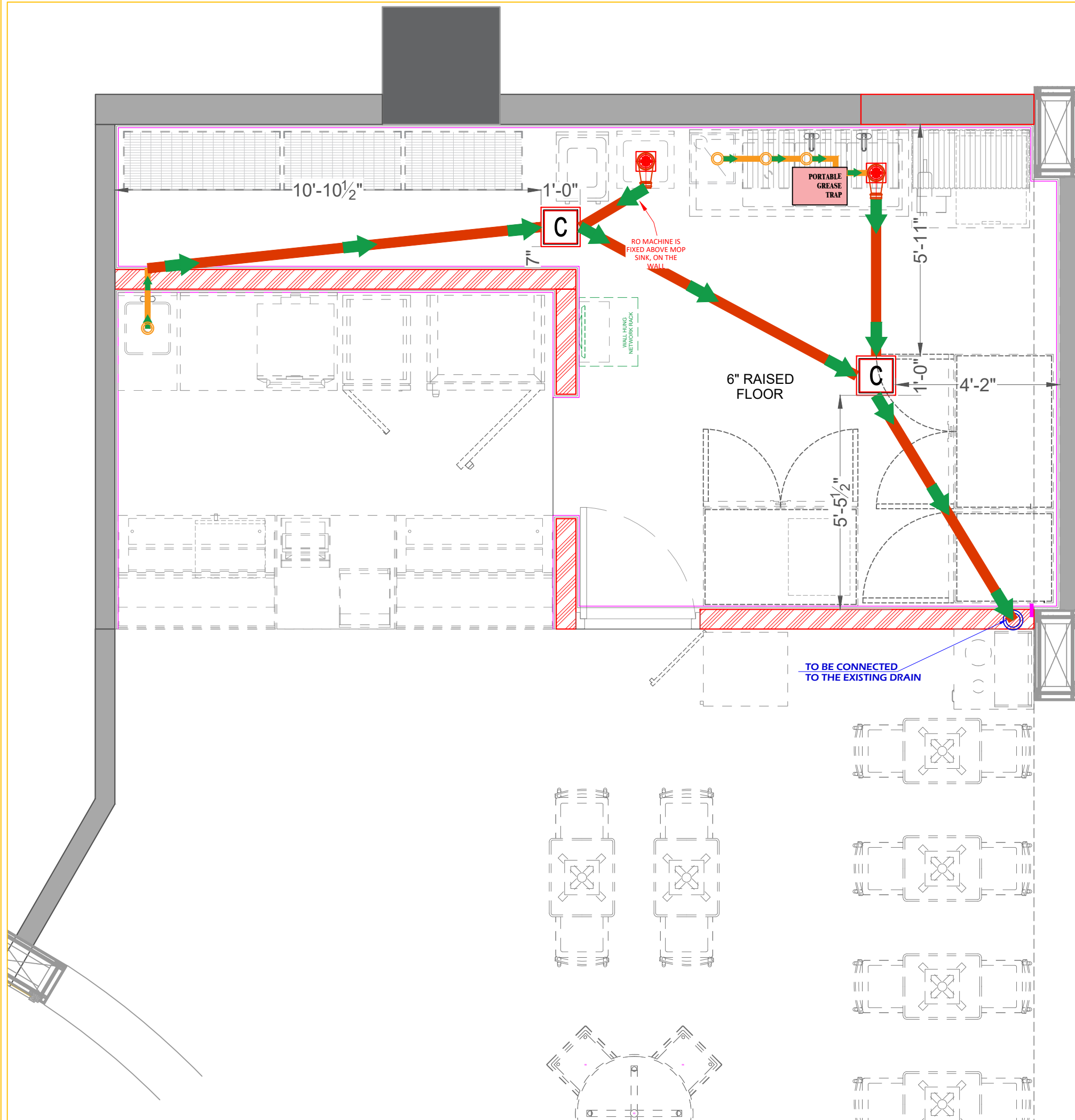
DRAWING TITLE: **CCTV LAYOUT_REV-1**

MADE BY: **AASTHA**

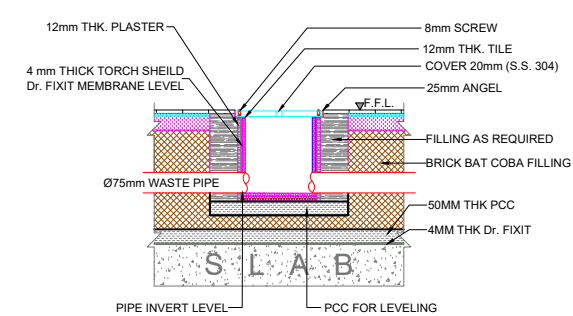
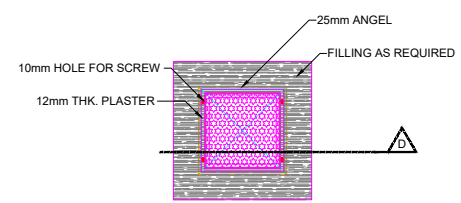
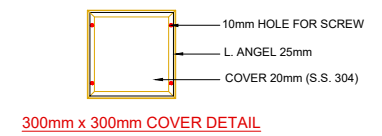
DATE: **20-10-23** RD: **21**

SUBWAY
EVERSUB India Pvt Ltd

OFFICE :-
SUBWAY SYSTEMS INDIA PRIVATE LIMITED,
Awfis Space Solutions, 3rd Floor, Tower-9,
Ginich Cyber Park, Gurgaon, Haryana,
India-122002.



CHAMBER TYPICAL DETAIL



SECTION - D
300mm x 300mm CHAMBER DETAIL

PLUMBING LEGEND (WATER SUPPLY)

SYMBOL	DESCRIPTION
	Ø50MM DIA UPVC WASTE PIPE
	Ø75MM DIA UPVC WASTE PIPE
	300X300MM CHAMBER
	FLOOR TRAP
	PORTABLE GREASE TRAP AS/APPD. OR AS/REQUIRED
	SLOPE (AS PER SITE CONDITION)

SITE:
AHMEDABAD-AIRPORT

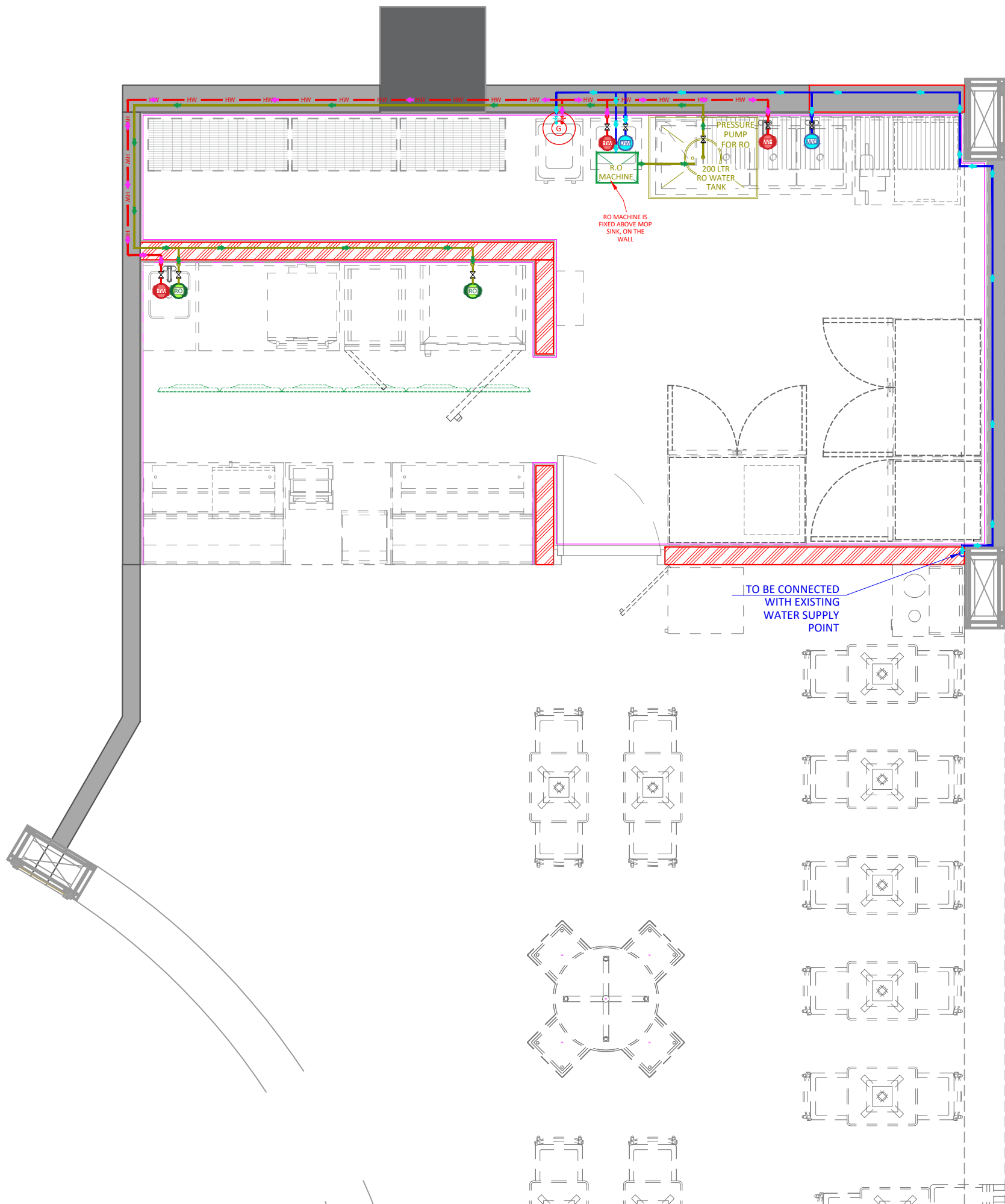
DRAWING TITLE :
DRAINAGE SYSTEM LAYOUT

MADE BY: AASTHA

DATE: 05-10-23 **RO:** 17

SUBWAY
EVERSUB India Pvt Ltd

OFFICE :-
SUBWAY SYSTEMS INDIA PRIVATE LIMITED,
Awfis Space Solutions, 3rd Floor, Tower-B,
Unitech Cyber Park, Gurugram, Haryana,
India-122002.



PLUMBING LEGEND (WATER SUPPLY)	
	DESCRIPTION
	20mm TAP, (HWS) HOT WATER SUPPLY WITH VALVE AS/REQUIRED
	20mm TAP, (RWS) R.O WATER SUPPLY WITH VALVE AS/REQUIRED
	20mm TAP, (DWS) DOMESTIC WATER SUPPLY WITH VALVE AS/REQUIRED
	(HWS) HOT WATER SUPPLY LINE
	(RWS) R.O WATER SUPPLY LINE
	(DWS) DOMESTIC WATER SUPPLY LINE
	BALL VALVE OR ANGEL VALVE AS/REQUIRED.
	GEYSER AS/REQUIRED
	R.O MACHINE AS/REQUIRED
	200 LTRS RO WATER TANK AS/APPD. TO BE HANGED WITH R.C.C SLAB AS/SITE CONDITION TANK BOTTOM WILL BE @8'-6"

LEGEND FOR WATER SUPPLY HT.		
EQUIPMENT NAME	WATER SUPPLY TAP HEIGHT	WATER SUPPLY CONNECTION
BACK COUNTER SINK	@24" FROM FINISH FLOOR LEVEL	HWS RWS
ICE MAKER	@24" FROM FINISH FLOOR LEVEL	RWS
SODA FOUNTAIN	@24" FROM FINISH FLOOR LEVEL	RWS
GEYSER	@84" FROM FINISH FLOOR LEVEL	DWS
RO PLANT	@96" FROM FINISH FLOOR LEVEL	DWS
MOP SINK	@30" FROM FINISH FLOOR LEVEL	HWS DWS
3 BOWL SINK	@24" FROM FINISH FLOOR LEVEL	HWS DWS
27 NO OVEN	@24" FROM FINISH FLOOR LEVEL	RWS

SITE: AHMEDABAD-AIRPORT

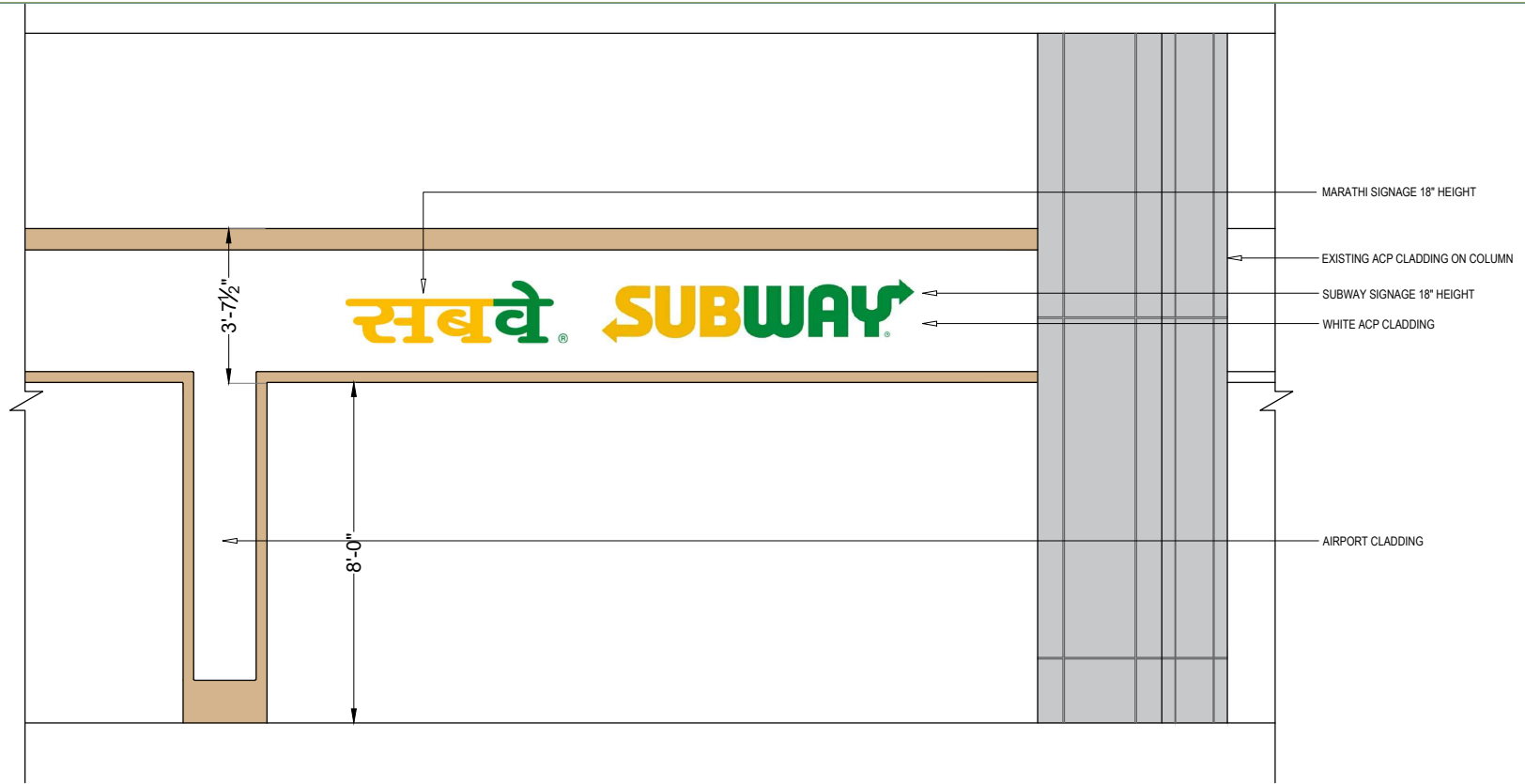
DRAWING TITLE : WATER SUPPLY LAYOUT

MADE BY : AASTHA

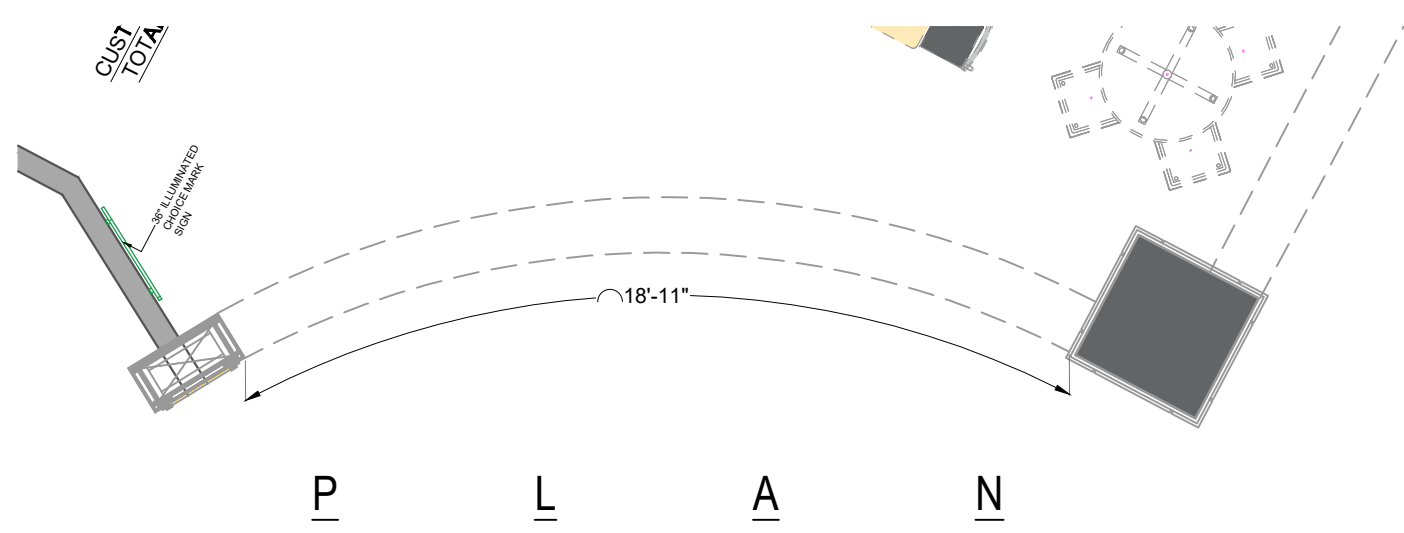
DATE : 05-10-23 RO : 16

SUBWAY
EVERSUB India Pvt Ltd

OFFICE :-
SUBWAY SYSTEMS INDIA PRIVATE LIMITED,
Awfis Space Solutions, 3rd Floor, Tower-B,
Unitech Cyber Park, Gurugram, Haryana,
India-122002.

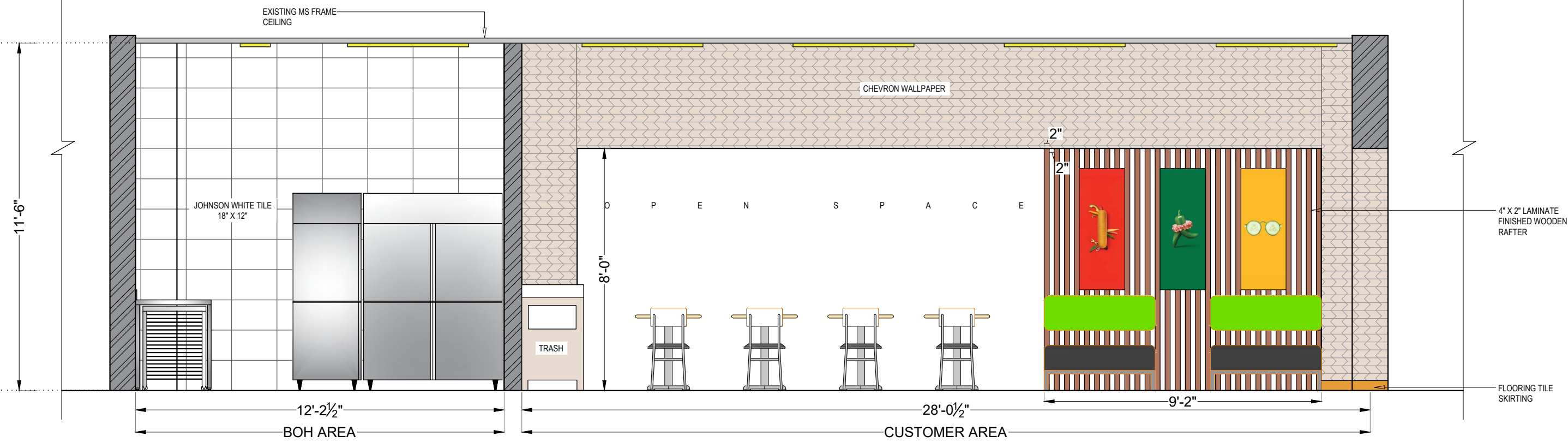


E L E V A T I O N _ D - D

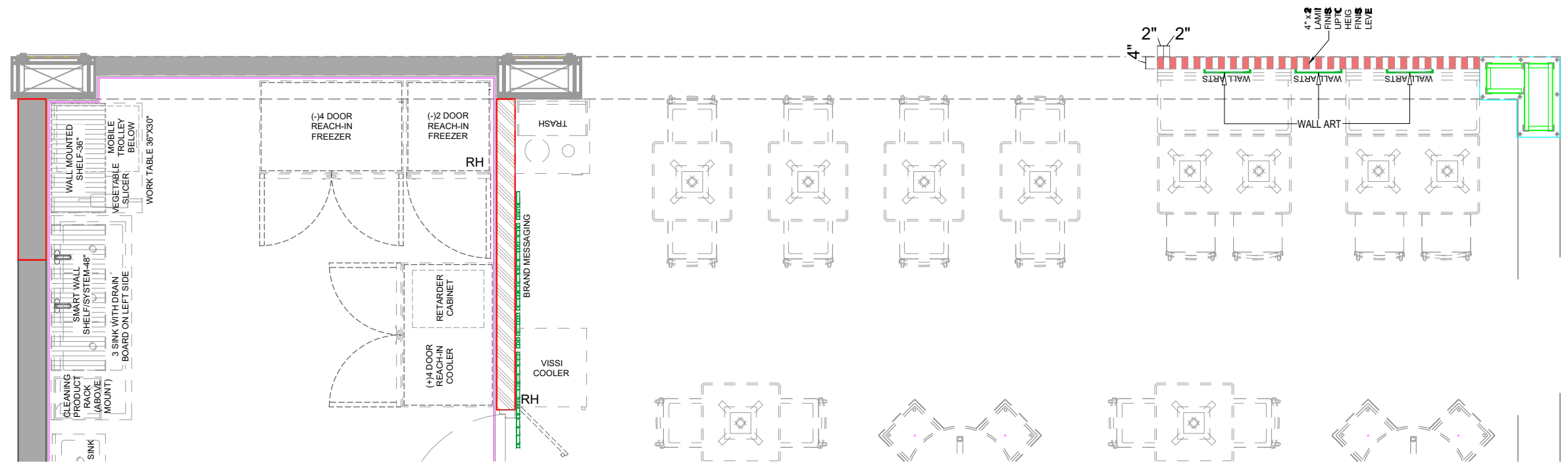


P L A N

SITE:	
AHMEDABAD-AIRPORT	
DRAWING TITLE :	
FACADE ELEVATION-REV-1	
MADE BY	AASTHA
DATE	10-10-23 RD 08
EVERSUB India Pvt Ltd	
OFFICE :-	
SUBWAY SYSTEMS INDIA PRIVATE LIMITED,	
Avifa Space Solutions, 3rd Floor, Tower-B,	
Unitech Cyber Park, Gurgaon, Haryana,	
India-122002.	



E L E V A T I O N - A - A



P L A N

SITE: AHMEDABAD-AIRPORT

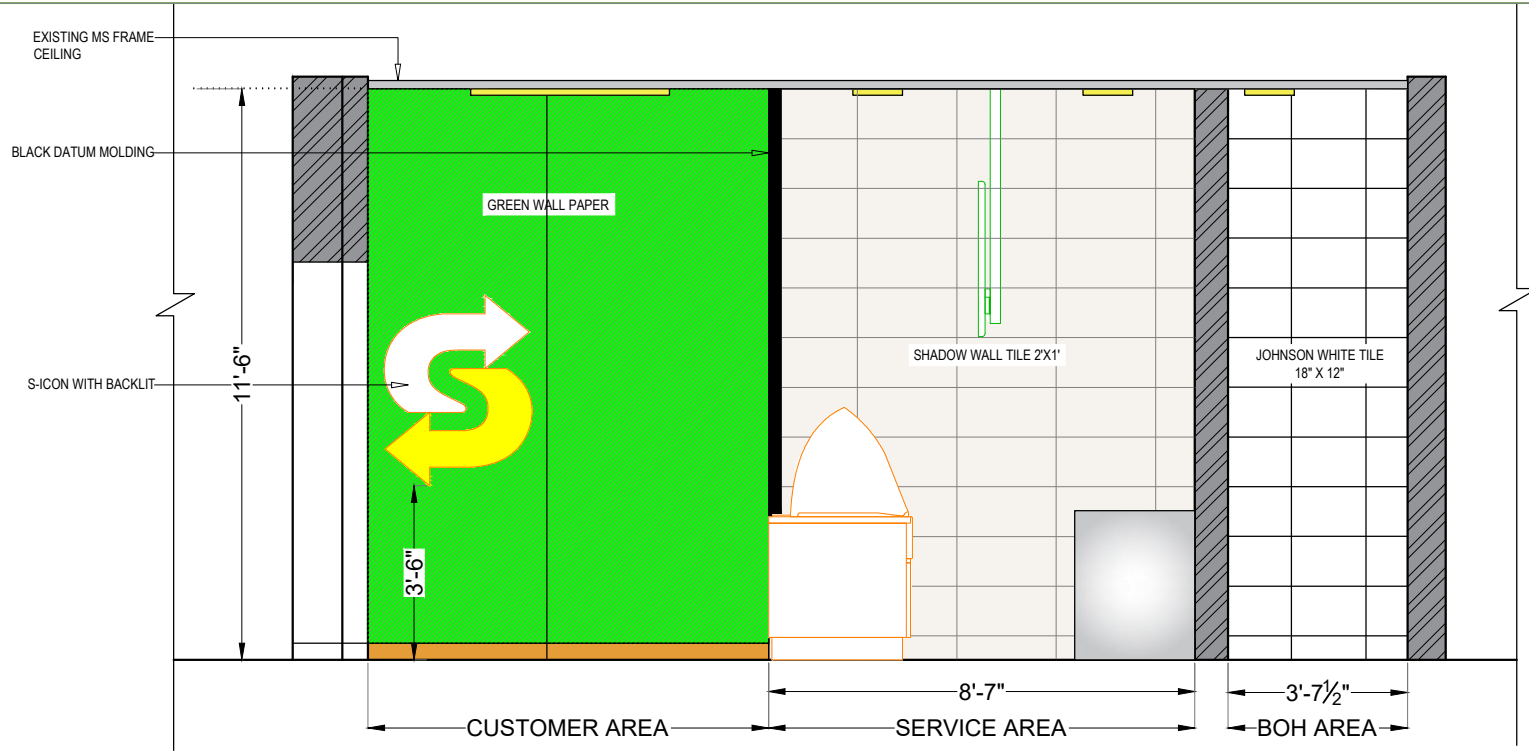
DRAWING TITLE: STORE ELEVATION-01

MADE BY: AASTHA

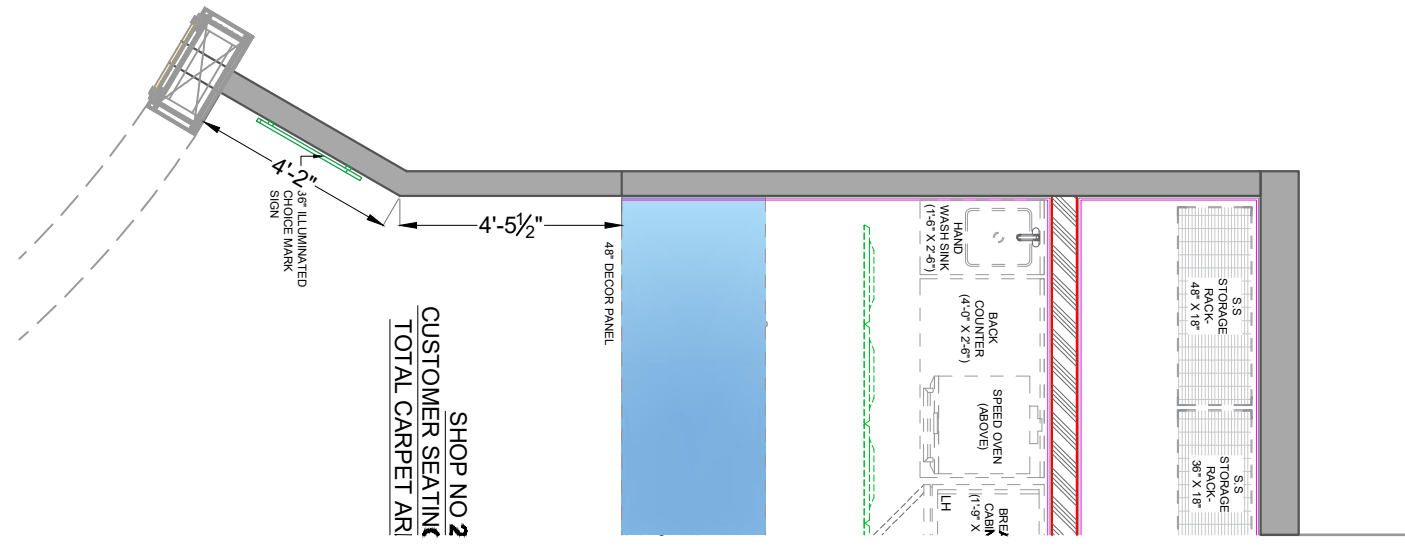
DATE: 20-10-23 RO: 08

SUBWAY
EVERSUB India Pvt Ltd

OFFICE :-
SUBWAY SYSTEMS INDIA PRIVATE LIMITED,
Awfis Space Solutions, 3rd Floor, Tower-B,
Unitech Cyber Park, Grurgram, Haryana,
India -122002.



E L E V A T I O N - C - C



SHOP NO 2
CUSTOMER SEATING
TOTAL CARPET AREA

P L A N

SITE: AHMEDABAD-AIRPORT

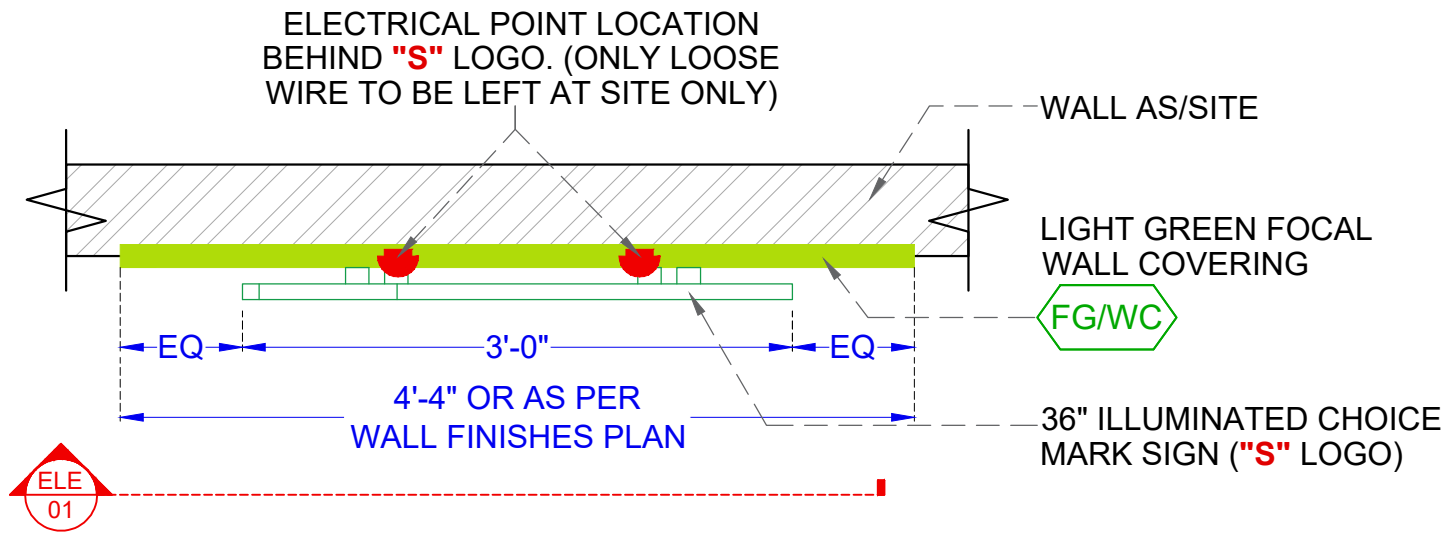
DRAWING TITLE : STORE ELEVATION -03_REV-1

MADE BY: AASTHA

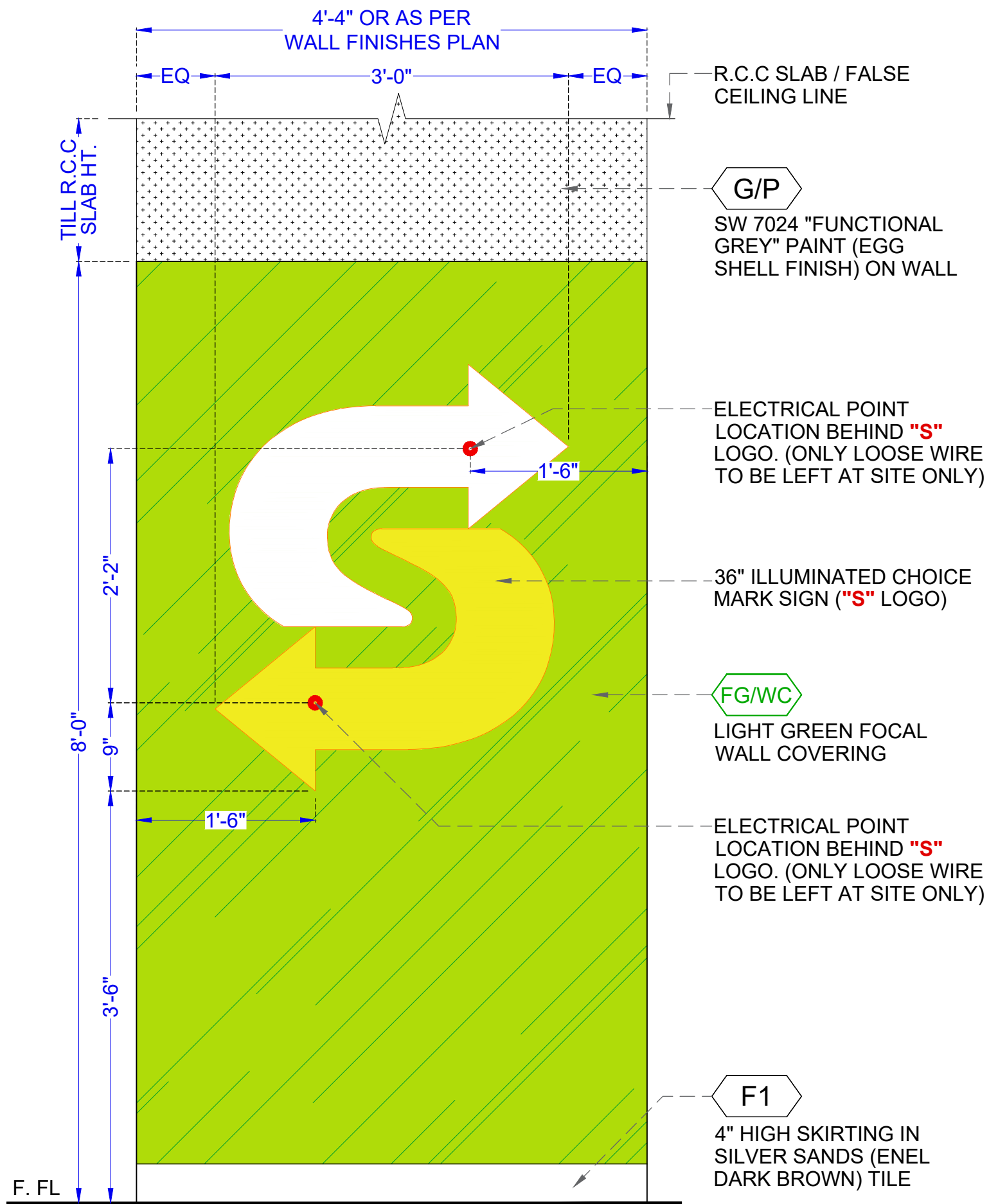
DATE: 20-10-23 RD 08

SUBWAY
EVERSUB India Pvt Ltd

OFFICE :-
SUBWAY SYSTEMS INDIA PRIVATE LIMITED,
Avifa Space Solutions, 3rd Floor, Tower-B,
Unitech Cyber Park, Gurgaon, Haryana,
India-122002.

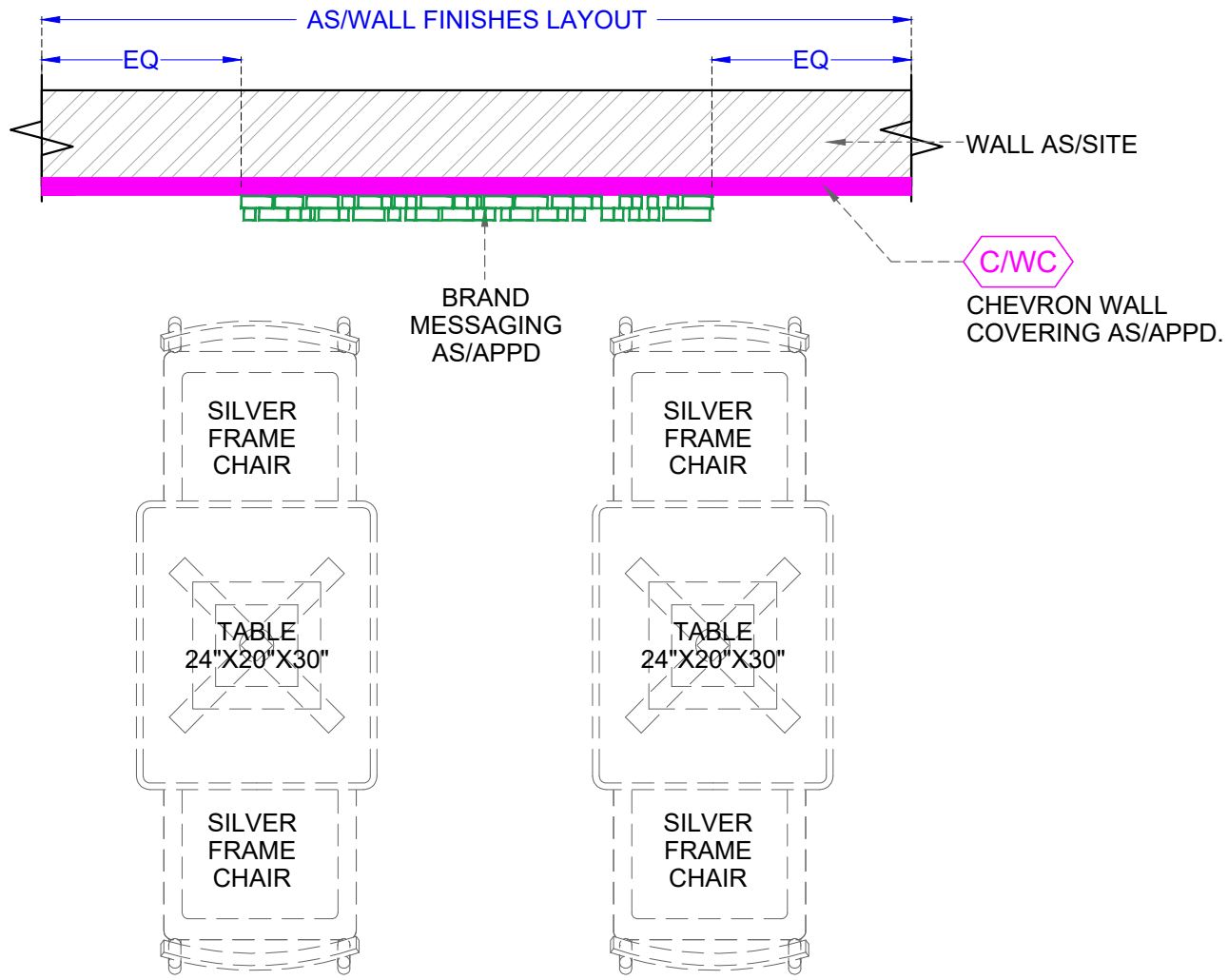


PL 01 PLAN (COICE MARK "S" LOGO) SCALE=NTS

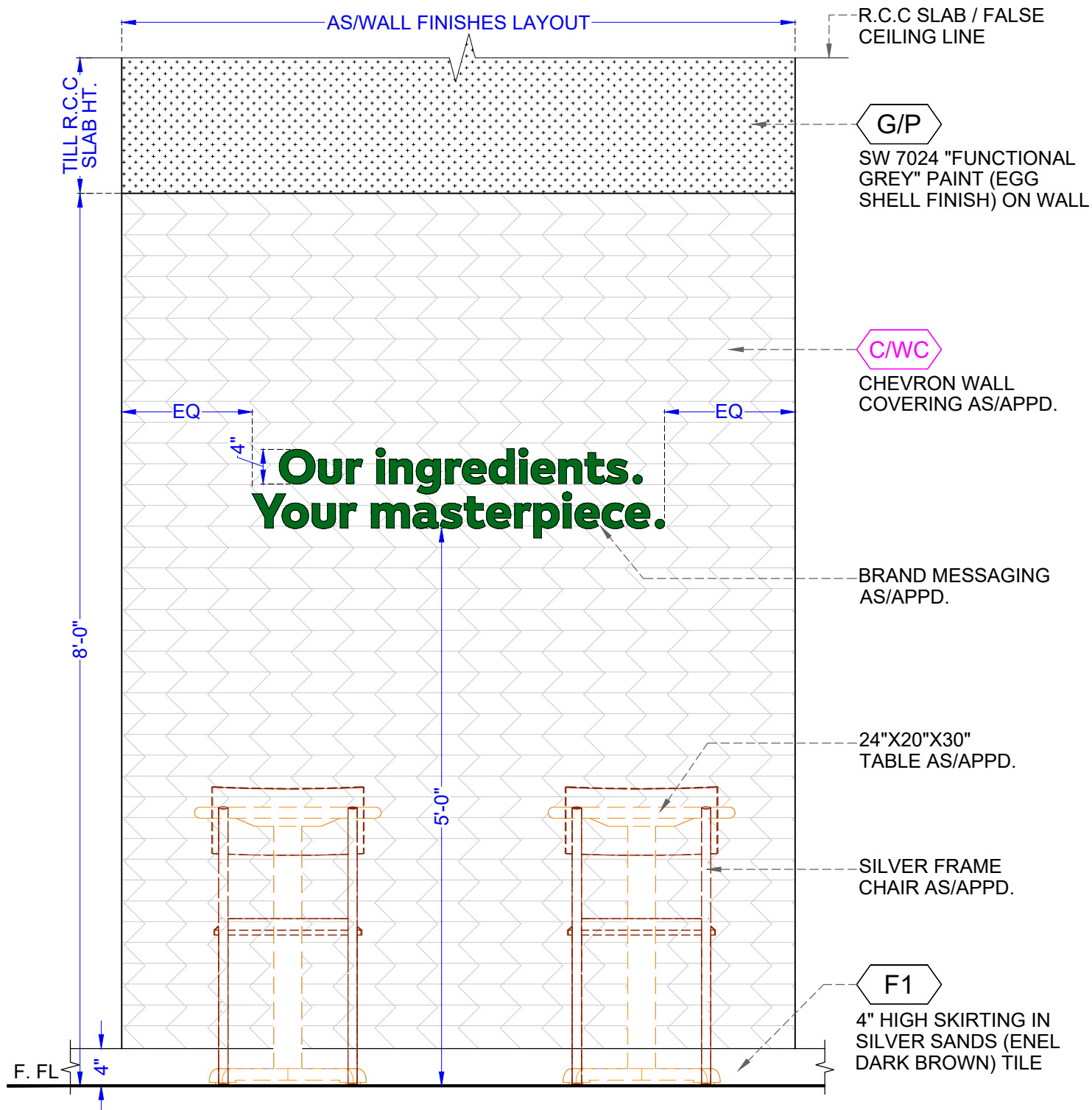


ELE 01 FRONT ELEVATION (COICE MARK "S" LOGO) SCALE=NTS

STANDARD DETAIL			
DRAWING TITLE :			
36 INCH "S" LOGO			
MADE BY	V K		
DATE	----	RO	00
SUBWAY			
EVERSUB India Pvt Ltd			
OFFICE :-			
SUBWAY SYSTEMS INDIA PRIVATE LIMITED,			
Awfis Space Solutions, 3rd Floor, Tower-B,			
Unitech Cyber Park, Gurugram, Haryana,			
India-122002.			

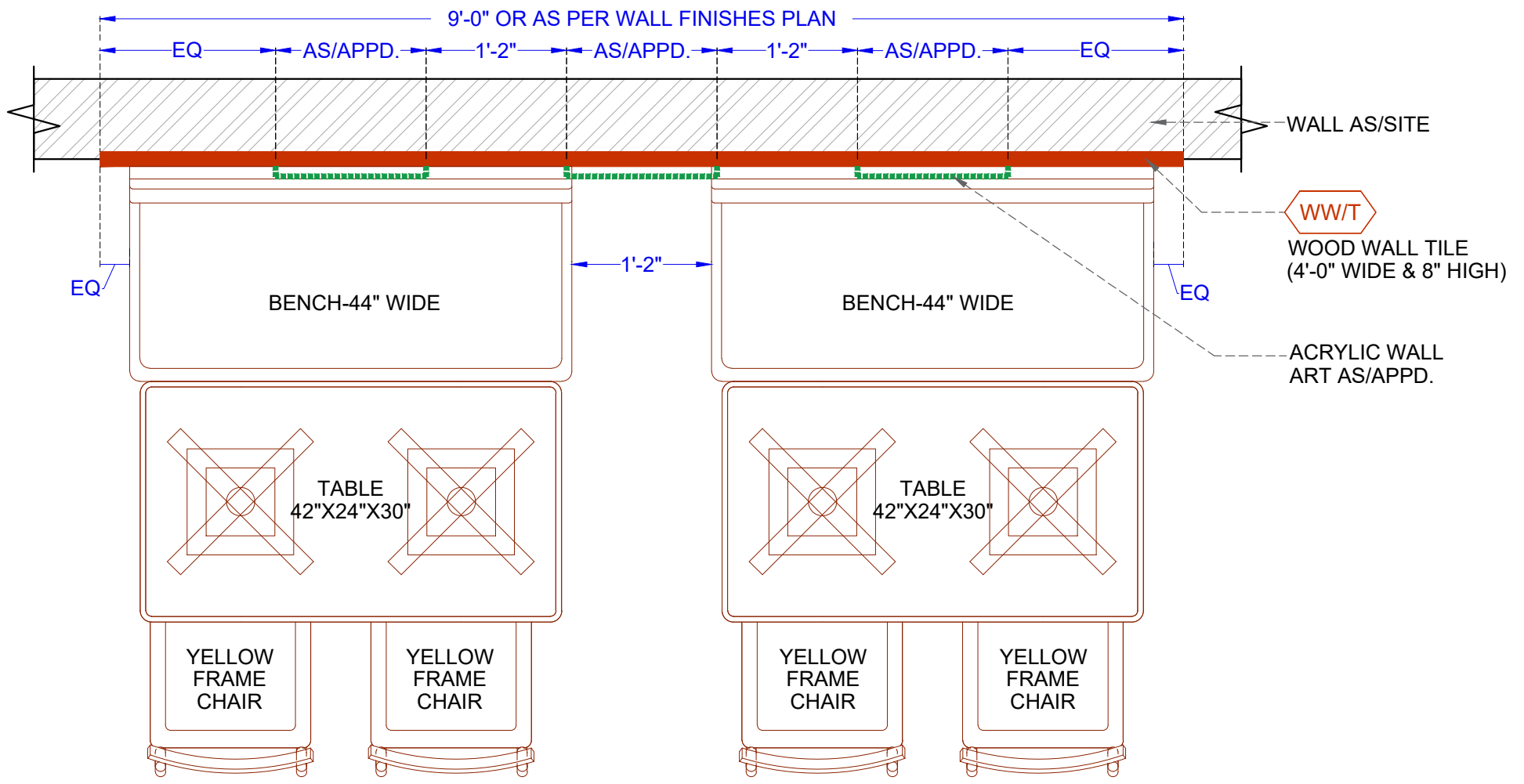


PLAN(BRAND MESSAGING)_DOUBLE ROW
 PL 01 SCALE=NTS

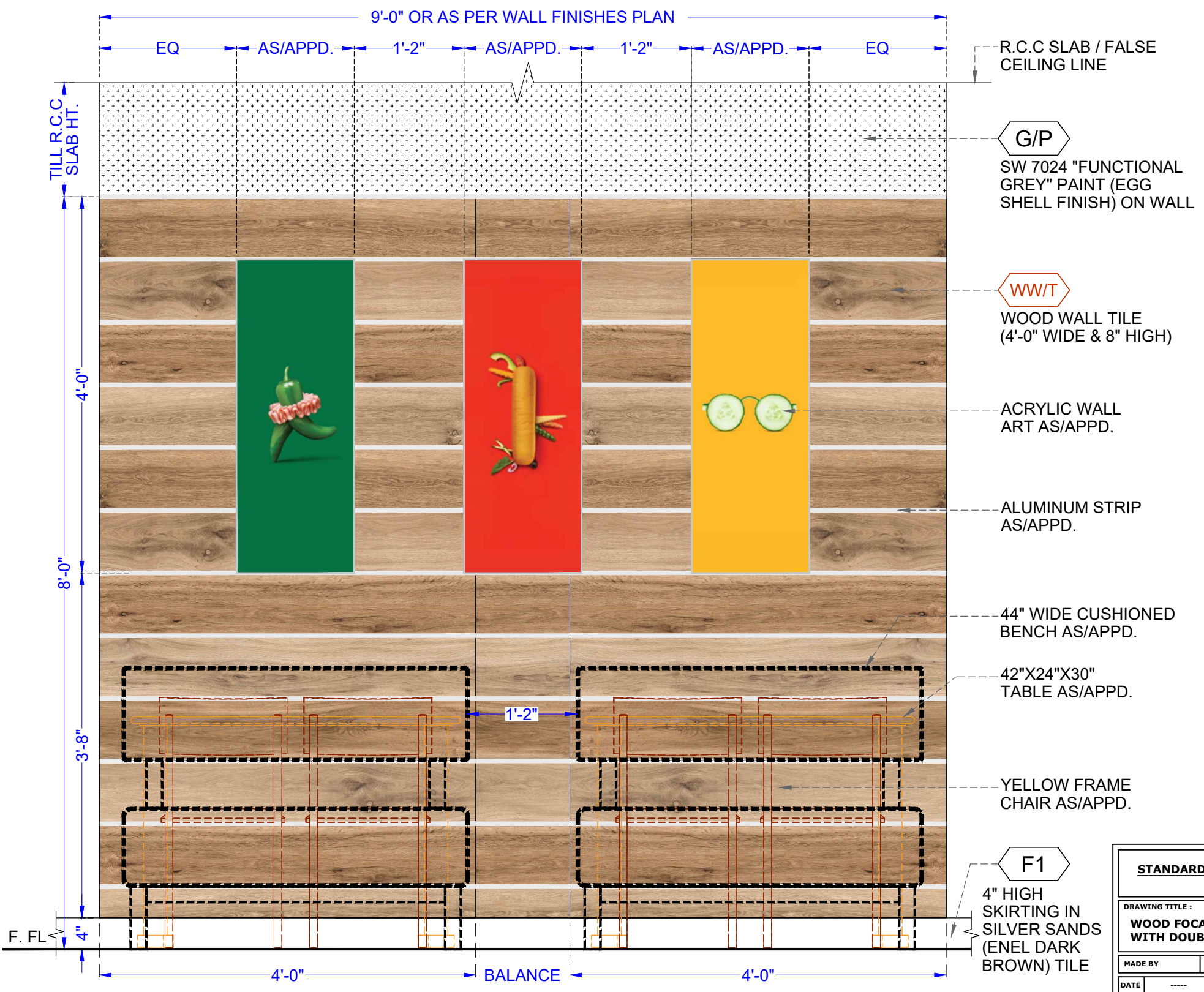


FRONT ELEVATION (BRAND MESSAGING)_DOUBLE ROW
 ELE 01 SCALE=NTS

STANDARD DETAIL	
DRAWING TITLE :	
BRAND MESSAGING (DOUBLE ROW)	
MADE BY	V K
DATE	RO 00
SUBWAY	
EVERSUB India Pvt Ltd	
OFFICE :- SUBWAY SYSTEMS INDIA PRIVATE LIMITED, Awfis Space Solutions, 3rd Floor, Tower-B, Unitech Cyber Park, Gurugram, Haryana, India-122002.	



PLAN (SEATING LOUNGE)
 PL 01 SCALE=NTS



FRONT ELEVATION (SEATING LOUNGE)
 ELE 01 SCALE=NTS

STANDARD DETAIL	
DRAWING TITLE :	
WOOD FOCAL WALL WITH DOUBLE BENCH	
MADE BY	V K
DATE	RO 00
SUBWAY	
EVERSUB India Pvt Ltd	
OFFICE :- SUBWAY SYSTEMS INDIA PRIVATE LIMITED, Awfis Space Solutions, 3rd Floor, Tower-B, Unitech Cyber Park, Gurugram, Haryana, India-122002.	