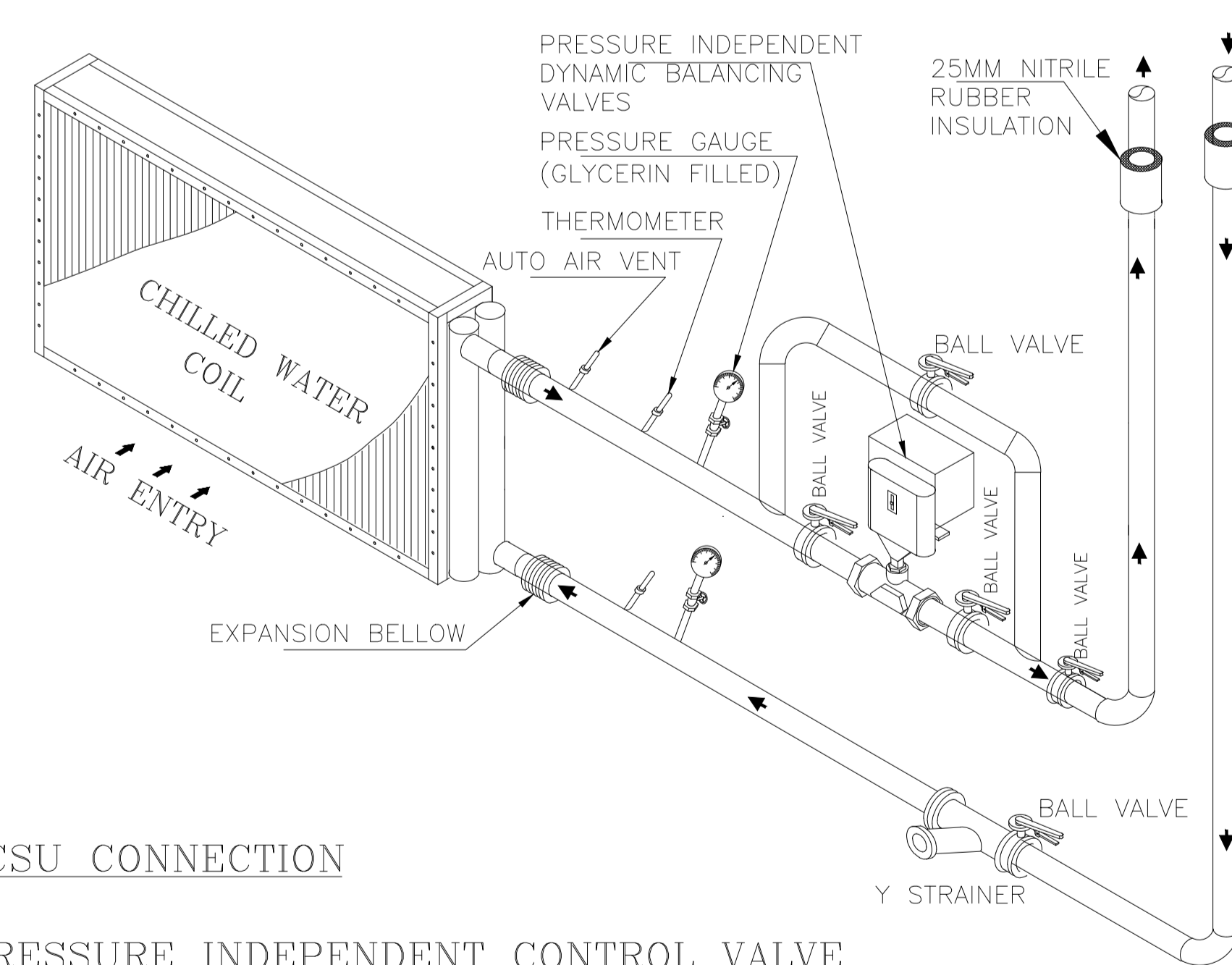


- NOTES:-
- Feasibility of construct for all works shall be concessionaire's responsibility without disturbing DIAL Assets/Services.
  - Ducting shall be installed in accordance with IS: 655. Thermal insulation on supply Air, Return Air & Fresh Air ducting shall be 19MM thick closed cell anti-microbial Class 'O' BS-476 part 6&7, FM approved Nitrile Rubber Elastomeric insulation of thermal conductivity 0.033w/m<sup>2</sup>k at 0°C.
  - Condensate drain pipe shall be conforming to IS: 4985 class '3' UPVC piping. UPVC solvent cement conforming to ASTM D-2564 shall be used for joints of UPVC piping. Thermal insulation On condensate drain piping shall be 25mm thick. Closed cell antimicrobial class 'o' BS-476 part 6&7, FM approved nitrile rubber elastomeric insulation of thermal conductivity 0.033w/m<sup>2</sup>k at 0°C.
  - All materials / items to be used t site are subjected to prior inspection and approval from DIAL-Engg. Data sheets wrt all material need to be submitted for prior approval. Test certificate Wrt all materials needs to be submitted prior to installation during MIR process.
  - Test certificates wrt all materials need to be submitted prior to installation during MIR process.
  - Approved makes for AHU section are VTS, ZECO & WAVES. Approved makes for grille, diffusers, louvers, VCD are CARRYAIRE, SYSTEMAIR, DYNACRAFT, AIRMASTER.
  - Turning/splitter vanes shall be provided wherever shown in drawing / as per SMACNA standard.
  - Duct joint are to be provided with 6mm thick neoprene gasket and silicon sealant.
  - Avoid flanges, dampers or any other ducting joint below beam / capital.
  - There should not be any electrical panel, Equipments below the AC machine.
  - Provision of removable or openable ceiling for servicing and maintenance of AC units, dampers etc. shall be considered.
  - Duct, CHW / Ref piping & drain piping shall be supported at regular interval at a distance of 2.4meter.



TYPICAL AHU/CSU CONNECTION  
WITH 2 WAY PRESSURE INDEPENDENT CONTROL VALVE  
DETAIL OF AHU CONNECTION

HVAC LEGEND

NO.	SYMBOL	DISCRIPTION
01.		SUPPLY AIR DUCT WITH THERMAL INSULATION
02.		SUPPLY AIR DUCT WITH ACOUSTIC INSULATION
03.		CHILLED WATER SUPPLY PIPE
04.		CHILLED WATER RETURN PIPE
05.		DRAIN PIPE
06.		SUPPLY AIR GRILLE WITH COLLAR DAMPER
07.		FRESH AIR GRILLE WITH COLLAR DAMPER
08.		CEILING SUSPENDED AIR HANDLING UNIT

PROJECT

TFS OFFICE AT T3, IGI AIRPORT, NR. GATE NO. 34

TITLE

PROPOSED HVAC LAYOUT PLAN

CLIENT:-

TFS-IGI AIRPORT NEW DELHI-37

HVAC CONSULTANT

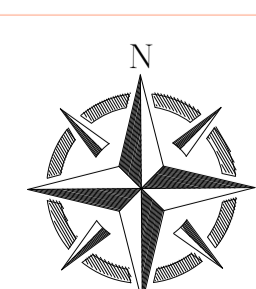


Sumier Kendra, 209, opp. mahindra tower, worli, Mumbai-400018  
nimish.shah@mepstekconsultants.com

DESIGN By ROSHAN

Scale : NTS

NORTH



DATE:

13-12-2023

