

GYPSUM PARTITION

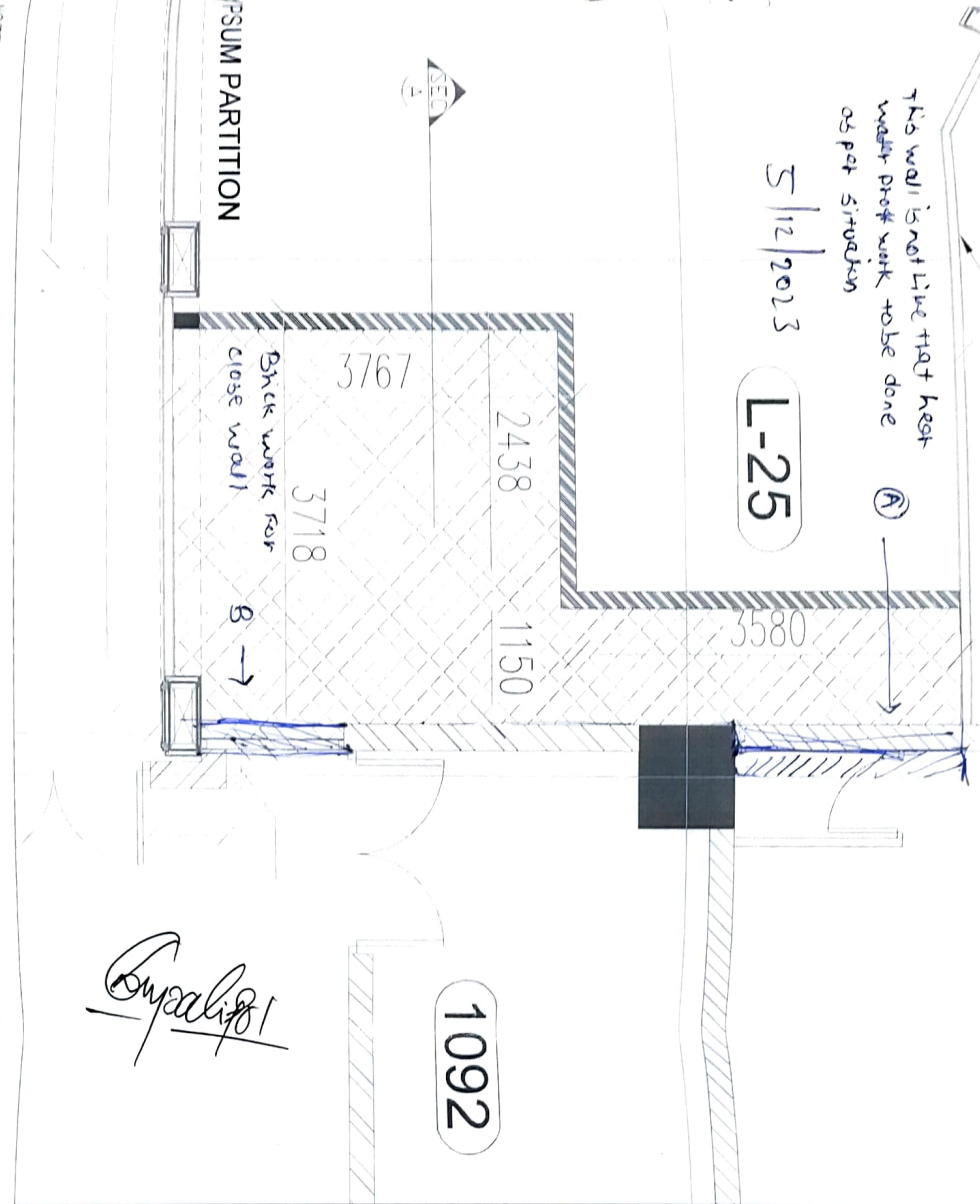
This wall is not like that kept
water proof work to be done
as per situation

5/12/2023

L-25

A

FUSM PARTITION

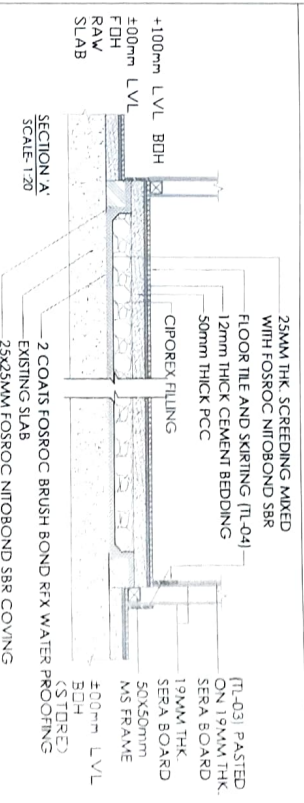


Prakash

NOTE WATER PROOFING ON WALL TO BE DONE UP TO 600 MM HEIGHT FROM UNFINISHED FLOOR LEVEL.

WATER PROOFING METHODOLOGY:

1. Removal of Top Screed from the Mother Slab.
2. Cleaning of the Mother Slab with Hard Brush & Removal of Dirt from the Surface with Air Blowers
3. Applying of the Fosroc RFX Brush Bond Coating on the mother slab with Brush in Clock wise directions & on all 4 Sides Walls till 1200mm Height. If the Floor is raised 300mm
4. After drying of the 1st Coat of the Brush Bond Coating 2nd Coat is applied in the Anticlockwise Directions
5. After drying of entire surface say 24 Hours. we will fill Water to 6 inch Levels for Ponding Testing.
6. Water will be kept for observations for 72 Hours. If Leakage is observed. Water is emptied
7. Above Procedure is Repeated.
8. If No Leakage is observed after 72 Hours. Water will be drained out from the Floor Surface.
9. Protective Screeding mixed with FOSROC NITROBOND SBR of Average 25mm thickness will be laid above water Proofing Surface with coving & Wall Junction.
10. After Dryings of Protective Screed say 2 Days. Drain Lines are laid on the floor with Slope & main Drain lines chambers are done.
12. After this floor raising by Light Seaprook block will be achieved followed with flooring material as desired.



WATERPROOFING LEGEND	
SYMBOL	DESCRIPTION
	WATER PROOFING
	BUND WALL

PROJECT		LOCATION		DRAWN BY		DATE		CHK BY		DATE		REVISION NO.		OPERATIONS		CHIEF		PROJECTS		FIRE OFFICER		COO			
SUBWAY		AHMEDABAD		PRAKASH		2023-11-21		PRAKASH		R0															
DWG No		T1		SCALE		NTS		SIGN		DATE		SIGN		DATE		SIGN		DATE		SIGN		DATE		SIGN	

WATER PROOFING - LAYOUT *lls* INHOUSE DESIGN