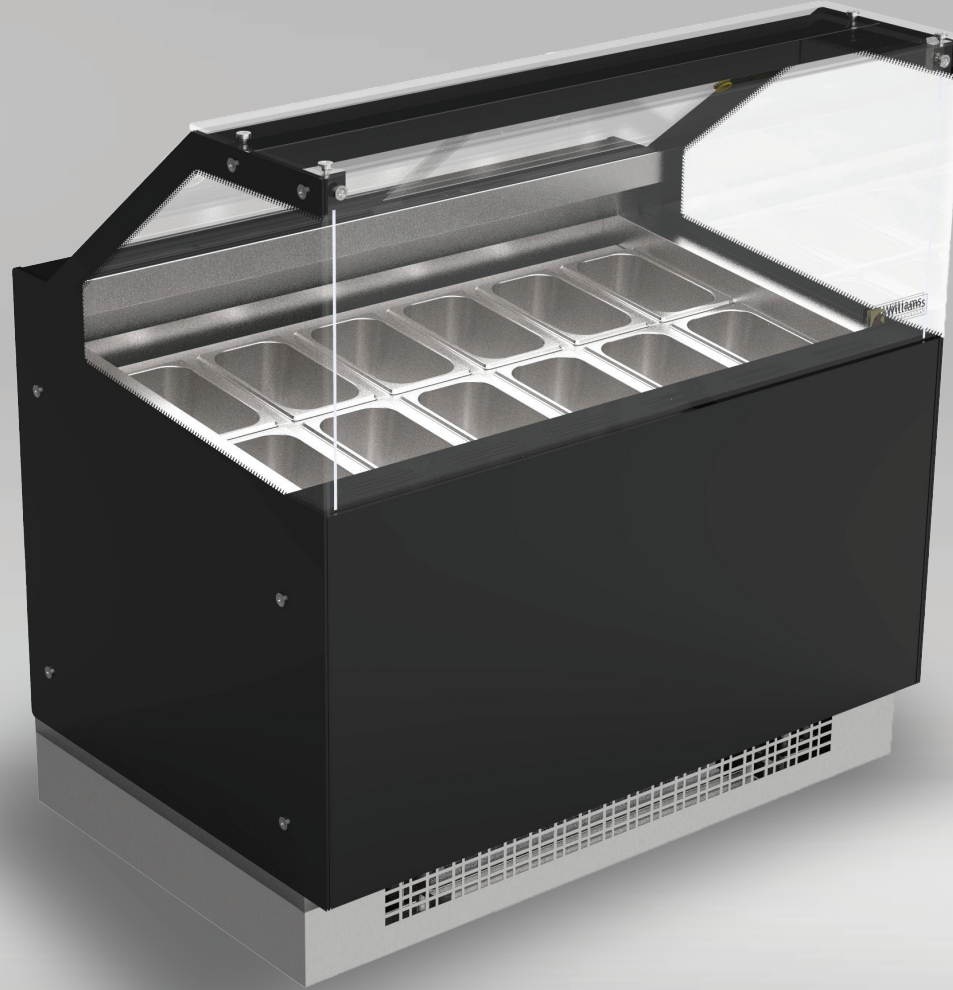


Smart

Sleek and Stylish



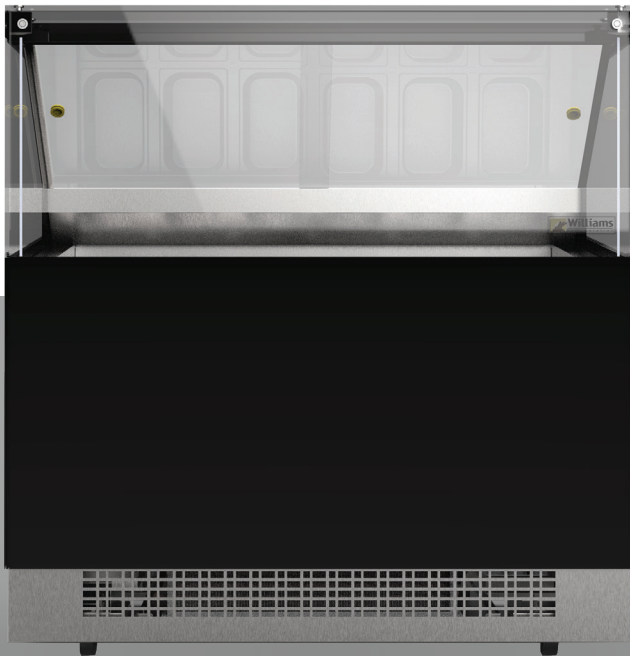
ICE CREAM / GELATO DISPLAY



Williams 
Display Cabinet
Crafted for Excellence

Essential design

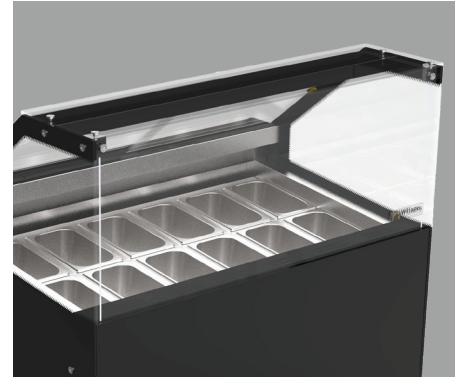
Professional ice-cream display cases with unique design and high-level technical features, offering a wide range of products to suit your needs. Multifunctional, adaptable and elegant ice-cream display cases, a perfect balance between aesthetics and functionality.



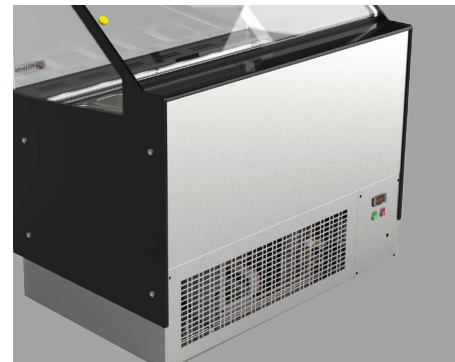
Features

- Slots are provided where flavour tags can be placed in front of the product.
- Polycarbonate sliding door. Possess brass/steel handles and the doors slide very smoothly.
- The frontal glass is associated with heater wires which avoids creation of fog.
- Novel design of extrusion where dual LED strips are located at the top with optional white/neutral white colours.

Features



- Front decorative panel material is customizable on request.
- The display is available in various sizes of 4' (9 flavours) and 4' (12 flavours).
- The side glass is provided with silver and black colour options.



- Electronic digital controller of Italian make is used for precise control and display of the temperature of the food items.
- Exclusive ON/OFF power switch is provided in the system. Also, ON/OFF switch for LED is given.

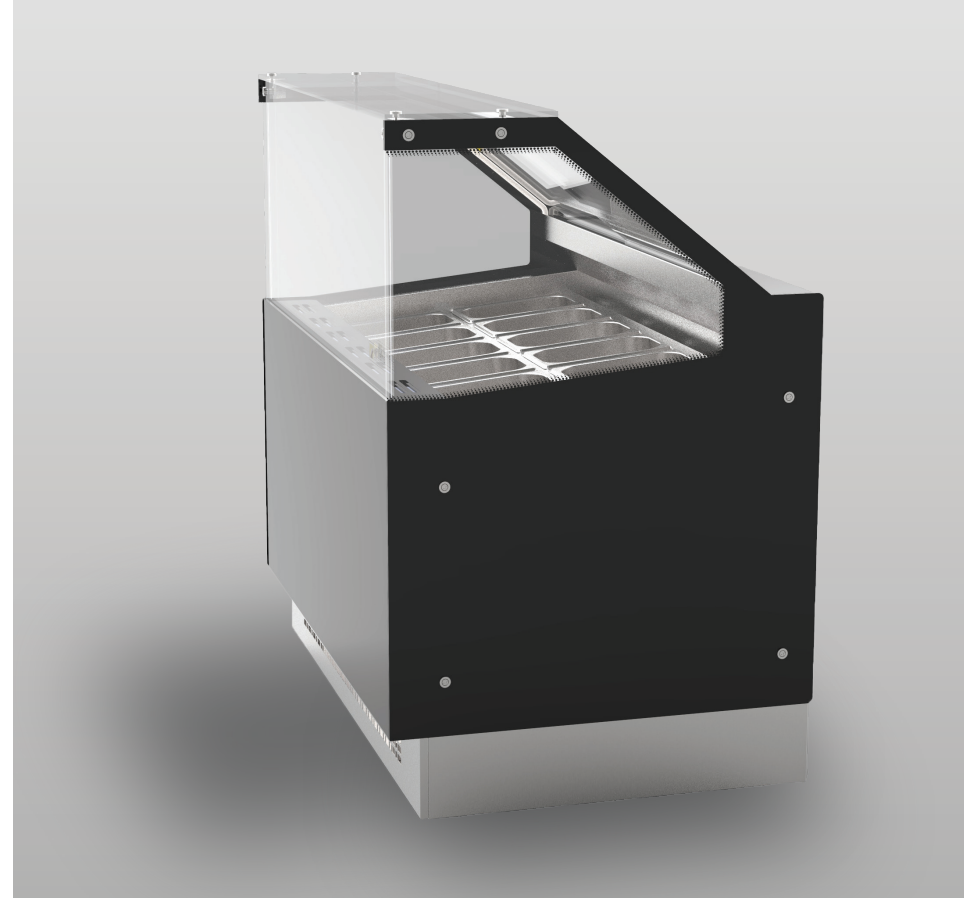


- Heavy duty wheels are provided for easy movement of the system.
- Specially designed scoop washer is an optional feature which helps in washing ice cream scoops instantly.

- Scoop washer is provided as an optional feature.
- Specially designed scoop washer is an optional feature which helps in washing ice cream scoops instantly.
- Work top is made of corian material.

Key Features

- The system is sustainable that zero ODP refrigerants are used .
- Wide range: 9 pans, 10 pans and 12 pans.
- High humidity enhances the perfect preservation of the ice cream.
- Efficient, durable and energy efficient European make compressor.
- AISI 304 food grade stainless steel with with matte finish.
- Balanced, forced air refrigeration system enables rapid product pull down and even temperature throughout.



Technical Specifications

Model	Smart 4'
Temperature Range	-15°C TO -21°C
Voltage	1ph / 230V / 50Hz
Power	1200W
Current	5.3A
No of GN pans	12 / 9 / 10
Annual Power Consumption	3504kWh
GN pan size	265 x 165 x 150mm / 360X165X120
Refrigerant	R404A
Unit Dimension (WxDxH)	1220 x 800 x 1280mm
Weight	185kg
Doors	2



UNIT-I

111 'C', KIADB Industrial Area
1st Phase, Bommasandra,
Hosur Main Road, Bangalore-560099, INDIA

UNIT-II & III

Plot No. 127&128, Bommasandra IV Phase,
Yarandahally, Bangalore-560099,
Karnataka, India.



+91-9844013768



sales@williamsrefrigeration.in
info@williamsrefrigeration.in



www.williamsrefrigeration.co.in

