

LIGHTING LEGEND				
SYMBOL	DESCRIPTION	CODE	WATTS	QTY
	CEILING LAMP TEMP:2700K	LT01	20	04
	PENDANT LIGHT TEMP:3000K	LT02	20	03
	DOWN LIGHT TEMP:3000K	LT03	23	03
	EMERGENCY DOWN LIGHT TEMP:3000K	LT03	23	02
	600 X 600MM LED PANEL LIGHT TEMP:3000K	LT04	36	08
	600 X 600MM EMERGENCY LED PANEL LIGHT TEMP:3000K	LT04	36	05
	TRACK LIGHT BLACK FINISH TEMP:3000K	LT05	15	53
	LED STRIP LIGHT TEMP:3000K	LT06	8W/M	8 M
	INDICATIVE SIGNAGE	--	100	14
	INDICATIVE LOCATION OF SUSPENDED LIT SIGNAGE	--	100	04
	EXIT LIGHT (WALL / CEILING MOUNTED)	--	08	03
	LIGHTING CONTROL SWITCH POINT	--	--	01
	UPS DISTRIBUTION BOARD (SINGLE PHASE)			01
	DISTRIBUTION BOARD (THREE PHASE)			02
	UNINTERRUPTIBLE POWER SUPPLY (N-BUILT BATTERY)			01
	LIGHTING NORMAL CIRCUIT	--		--
	LIGHTING EMERGENCY CIRCUIT	--		--

NOTES

- ALL DIMENSIONS & LEVEL ARE IN "MM" OR OTHERWISE MENTIONED.
- FINAL LOCATION OF LIGHT FIXTURES TO BE FOLLOWED AS PER ARCHITECT LAYOUT.
- REFER ARCHITECTURAL DETAIL LAYOUT FOR DECORATIVE TYPE LIGHT FIXTURES.
- ALL SWITCH / SOCKET / DATA OUTLET PLATE COLOUR / FINISH TO BE MATCH WITH ARCHITECTURAL LAYOUT & ARCHITECT APPROVAL TO BE TAKEN PRIOR TO PRODUCT PROCUREMENT.

ALL DIMENSIONS MUST BE CHECKED ON SITE.
INFORM THE ENGINEER OF ANY DISCREPANCIES PRIOR TO CONSTRUCTION.

NOTES:
IRRESPECTIVE OF THE DRAWING(S), IT IS THE CONTRACTOR'S OBLIGATION AND RESPONSIBILITY THAT SHALL BE EXECUTED AND COMPLETED IN ACCORDANCE TO THE SPECIFICATION, DRAWING(S) AS WELL AS REQUIREMENT. THE SAID DRAWING(S) SHALL NOT RELIEVE CONTRACTOR FROM ANY OBLIGATION UNDER THE CONTRACT AND IN PARTICULAR FROM ITS RESPONSIBILITY IN RELATION TO THE INSTALLATION MATERIALS AND WORKMANSHIP AND WHERE RELEVANT FROM A DUTY TO SEEK APPROVAL FROM THE COMPETENT AUTHORITY.

C04 12.10.24 GOOD FOR CONSTRUCTION TT SM
REV DATE DESCRIPTION DSN CHK



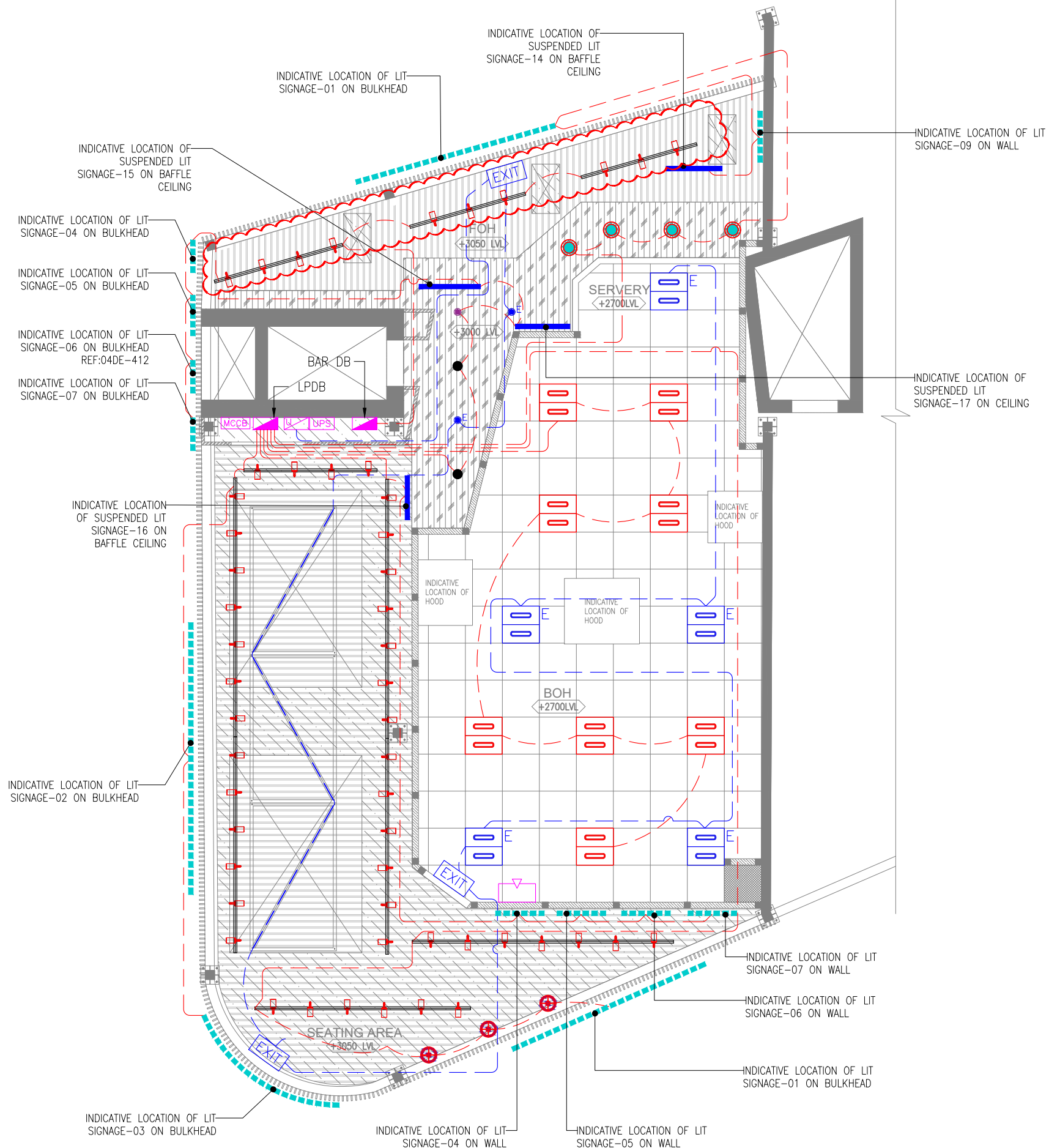
PROJECT
CARLSJR FF018
GMR INTERNATIONAL
AIRPORT LIMITED,
HYDERABAD

DRAWING TITLE
LIGHTING FIXTURE LAYOUT

SCALE 1:75 DATE 12.10.24 DESIGN TT A3 SHEET

STATUS
GOOD FOR CONSTRUCTION

ORG PROJECT NO DRAWING TYPE NUMBER REV
TFS 0000 ELEC E402 C04



LIGHTING LEGEND				
SYMBOL	DESCRIPTION	CODE	WATTS	QTY
	CEILING LAMP TEMP:2700K	LT01	20	04
	PENDANT LIGHT TEMP:3000K	LT02	20	03
	DOWN LIGHT TEMP:3000K	LT03	23	03
	EMERGENCY DOWN LIGHT TEMP:3000K	LT03	23	02
	600 X 600MM LED PANEL LIGHT TEMP:3000K	LT04	36	08
	600 X 600MM EMERGENCY LED PANEL LIGHT TEMP:3000K	LT04	36	05
	TRACK LIGHT BLACK FINISH TEMP:3000K	LT05	15	53
	LED STRIP LIGHT TEMP:3000K	LT06	8W/M	8 M
	INDICATIVE SIGNAGE	--	100	14
	INDICATIVE LOCATION OF SUSPENDED LIT SIGNAGE	--	100	04
	EXIT LIGHT (WALL / CEILING MOUNTED)	--	08	03
	LIGHTING CONTROL SWITCH POINT	--	--	01
	UPS DISTRIBUTION BOARD (SINGLE PHASE)			01
	DISTRIBUTION BOARD (THREE PHASE)			02
	UNINTERRUPTIBLE POWER SUPPLY (IN-BUILT BATTERY)			01
	LIGHTING NORMAL CIRCUIT	--		--
	LIGHTING EMERGENCY CIRCUIT	--		--

NOTES

- ALL DIMENSIONS & LEVEL ARE IN "MM" OR OTHERWISE MENTIONED.
- FINAL LOCATION OF LIGHT FIXTURES TO BE FOLLOWED AS PER ARCHITECT LAYOUT.
- REFER ARCHITECTURAL DETAIL LAYOUT FOR DECORATIVE TYPE LIGHT FIXTURES.
- ALL SWITCH / SOCKET / DATA OUTLET PLATE COLOUR / FINISH TO BE MATCH WITH ARCHITECTURAL LAYOUT & ARCHITECT APPROVAL TO BE TAKEN PRIOR TO PRODUCT PROCUREMENT.

ALL DIMENSIONS MUST BE CHECKED ON SITE.
INFORM THE ENGINEER OF ANY DISCREPANCIES PRIOR TO CONSTRUCTION.

NOTES:
IRRESPECTIVE OF THE DRAWING(S), IT IS THE CONTRACTOR'S OBLIGATION AND RESPONSIBILITY THAT SHALL BE EXECUTED AND COMPLETED IN ACCORDANCE TO THE SPECIFICATION, DRAWING(S) AS WELL AS REQUIREMENT. THE SAID DRAWING(S) SHALL NOT RELIEVE CONTRACTOR FROM ANY OBLIGATION UNDER THE CONTRACT AND IN PARTICULAR UNDER ITS RESPONSIBILITY IN RELATION TO THE INSTALLATION MATERIALS AND WORKMANSHIP AND WHERE RELEVANT FROM A DUTY TO SEEK APPROVAL FROM THE COMPETENT AUTHORITY.

C05 12.10.24 GOOD FOR CONSTRUCTION TT SM
REV DATE DESCRIPTION DSN CHK



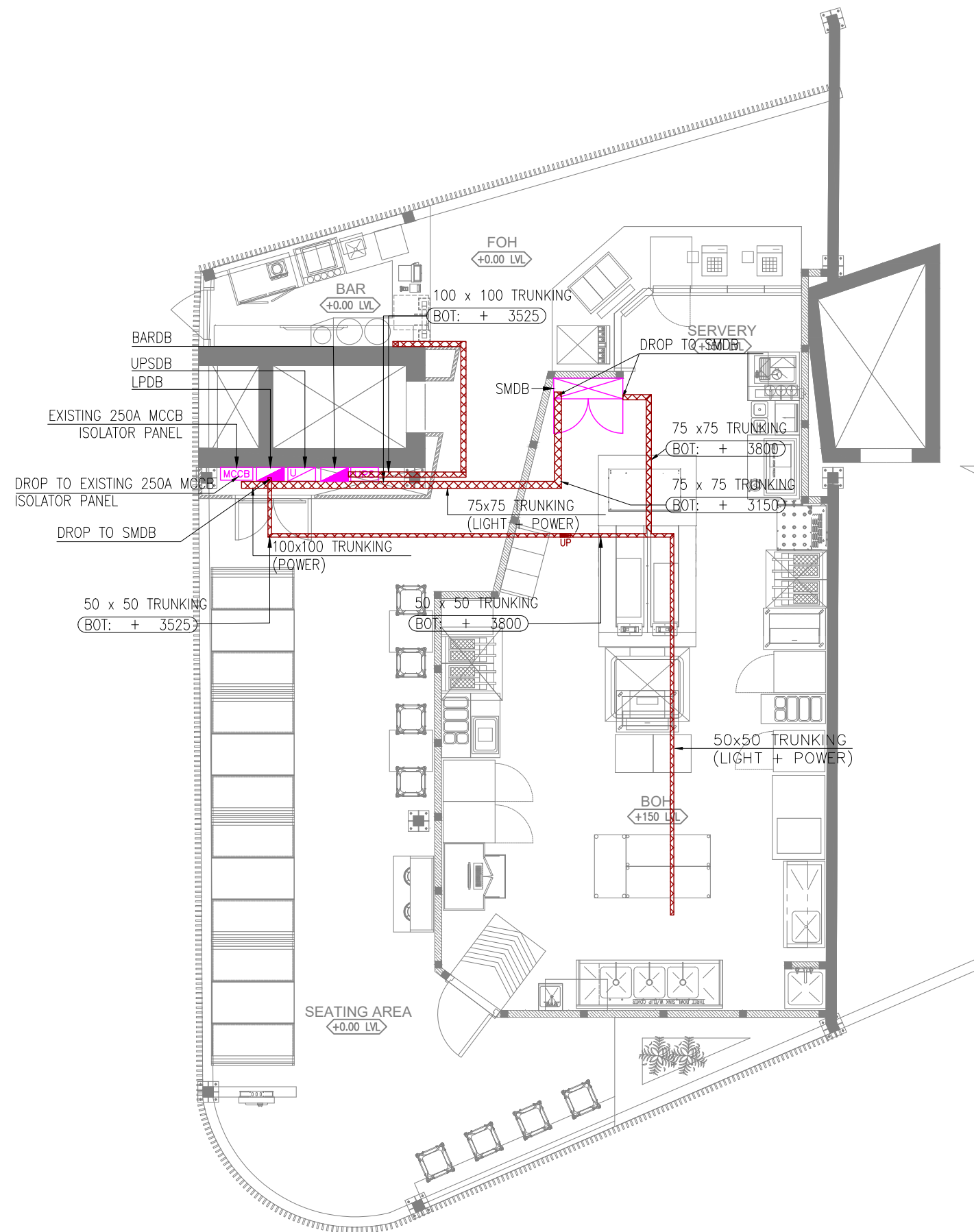
PROJECT
CARLSJR FF018
GMR INTERNATIONAL
AIRPORT LIMITED,
HYDERABAD

DRAWING TITLE
LIGHTING LAYOUT

SCALE 1:75 DATE 12.10.24 DESIGN TT A3 SHEET

STATUS
GOOD FOR CONSTRUCTION

ORG PROJECT NO DRAWING TYPE NUMBER REV
TFS 0000 ELEC E401 C05



RACEWAY / CONTAINMENT LEGEND		
SYMBOL	DESCRIPTION	QTY
	CABLE TRUNKING (LIGHTING & LIGHTING)	--
	250A MCCB ISOLATOR PANEL (EXISTING AT SITE)	--
	SUB MAIN DISTRIBUTION BOARD (SMDB)	01
	UPS DISTRIBUTION BOARD (SINGLE PHASE)	01
	DISTRIBUTION BOARD (THREE PHASE)	02

NOTES

- ALL DIMENSIONS & LEVEL ARE IN "MM" OR OTHERWISE MENTIONED.
- GI CONDUITS OF SUITABLE DIAMETER TO BE USED FOR ALL CCTV CABLING BETWEEN CAMERA TO DVR.
- HEAVY DUTY PVC CONDUITS OF SUITABLE DIAMETER TO BE USED FOR ALL LIGHTING & POWER CABLING BETWEEN LIGHT / POWER POINT TO DB.
- CONTRACTOR TO FOLLOW AIRPORT MEP GUIDELINES FOR MATERIAL MAKE & SPECIFICATION.
- CABLE TRAY & TRUNKING ROUTES ARE INDICATIVE ONLY, TO BE COORDINATED WITH OTHER SERVICES.
- THE CONTRACTOR IS EXPECTED TO DEVELOP THE ACTUAL ROUTING DETAILS OF THESE AT SITE BASED ON SITE CONDITION. IT IS IMPORTANT TO ENSURE THAT THESE SERVICES ARE NOT VISIBLE TO CUSTOMERS, CAN BE ACCESSED IN FUTURE FOR MAINTENANCE AND ARE NOT DETRIMENTAL TO THE UNIT.
- ALL MCCB/ISOLATOR PANEL SHALL BE MADE ACCESSIBLE AT ALL TIME.

ALL DIMENSIONS MUST BE CHECKED ON SITE.
INFORM THE ENGINEER OF ANY DISCREPANCIES PRIOR TO CONSTRUCTION.

NOTES:
IRRESPECTIVE OF THE DRAWING(S), IT IS THE CONTRACTOR'S OBLIGATION AND RESPONSIBILITY THAT SHALL BE EXECUTED AND COMPLETED IN ACCORDANCE TO THE SPECIFICATION, DRAWING(S) AS WELL AS REQUIREMENT. THE SAID DRAWING(S) SHALL NOT RELIEVE CONTRACTOR FROM ITS OBLIGATION UNDER THE CONTRACT AND IN PARTICULAR FROM ITS RESPONSIBILITY IN RELATION TO THE INSTALLATION MATERIALS AND WORKMANSHIP AND WHERE RELEVANT FROM A DUTY TO SEEK APPROVAL FROM THE COMPETENT AUTHORITY.

C05 12.10.24 GOOD FOR CONSTRUCTION TT SM
REV DATE DESCRIPTION DSN CHK



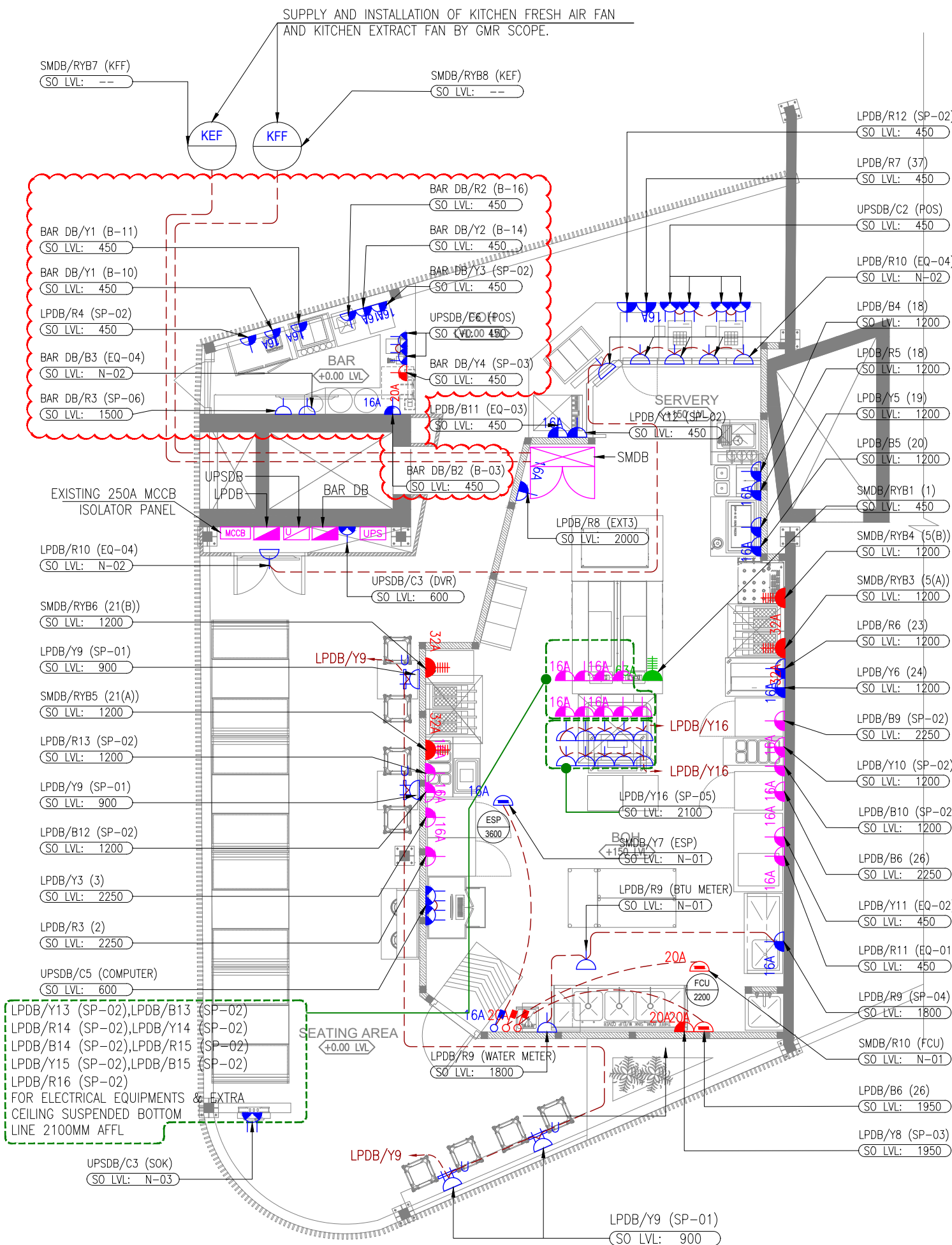
PROJECT
CARLSJR FF018
GMR INTERNATIONAL
AIRPORT LIMITED,
HYDERABAD

DRAWING TITLE
CONTAINMENT LAYOUT

SCALE 1:75 DATE 12.10.24 DESIGN/AAK A3 SHEET

STATUS
GOOD FOR CONSTRUCTION

ORG PROJECT NO DRAWING TYPE NUMBER REV
TFS 0000 ELEC E601 C05



ELECTRICAL SYSTEM LEGEND		
SYMBOL	DESCRIPTION	QTY
	13A SINGLE SWITCHED SOCKET OUTLET (UPS POWER)	01
	13A SINGLE SWITCHED SOCKET OUTLET	20
	13A DUAL SWITCHED SOCKET OUTLET (UPS POWER)	10
	13A DUAL SWITCHED UNIVERSAL SOCKET OUTLET + DUAL USB PORT	04
	16A SINGLE SWITCHED SOCKET OUTLET	19
	16A SINGLE SWITCHED METAL CLAD SOCKET OUTLET	19
	20A SINGLE SWITCHED METAL CLAD SOCKET OUTLET	02
	16A UNSWITCHED FUSED CONNECTION OUTLET WITH-OUT NEON INDICATOR	02
	16A DOUBLE POLE SWITCH WITH NEON INDICATOR	02
	20A UNSWITCHED FUSED CONNECTION OUTLET WITH-OUT NEON INDICATOR	01
	20A DOUBLE POLE SWITCH WITH NEON INDICATOR	01
	THREE PHASE SWITCHED METAL CLAD SOCKET (5 PIN) (WALL MOUNTED)	04
	THREE PHASE SWITCHED METAL CLAD SOCKET (5 PIN) (WALL MOUNTED)	01
	UPS DISTRIBUTION BOARD (SINGLE PHASE)	01
	DISTRIBUTION BOARD (THREE PHASE)	02
	SUB MAIN DISTRIBUTION BOARD (SMDB)	01
	250A MCCB ISOLATOR PANEL (EXISTING AT SITE)	--
	ELECTRICAL POWER CIRCUIT	--

NOTES:

- ALL DIMENSIONS & LEVEL ARE IN "MM" OR OTHERWISE MENTIONED.
- SOCKETS PROVIDED NEAR WET AREAS SHALL BE AT LEAST 1.2 MTR AWAY FROM WATER SOURCE AND IP66 RATED.
- A DISTANCE OF MINIMUM 300MM TO BE MAINTAINED BETWEEN POWER AND COMMUNICATION CABLE.
- ALL CIRCUITS IN DB ARE TO BE TAGGED. MCB/MCCB IS TO BE LABELED AND THE SCHEMATIC IS TO BE UPDATED ACCORDING TO WHAT IS DISPLAYED IN DB.
- SOCKET ELEVATIONS SHOWN IN THE DRAWING IS DESIGN INDICATIVE. THE CONTRACTOR NEEDS TO FIELD VERIFY AT THE SITE AND INTEGRATE IT TO MATCH WITH THE ID DESIGN FOR THE FINAL LOCATION & ELEVATIONS.
- SHUTTER TYPE SWITCH SOCKET OUTLET ON SUITABLE MS BOX SHALL BE USED WITH PROPER EARTHING.
- ALL ELECTRICAL EQUIPMENT SHALL BE PROPER EARTHED AND CONNECTED TO MAIN EARTHING WITH SUITABLY SIZED EARTHING CONDUCTOR.
- ALL SWITCH / SOCKET / DATA OUTLET PLATE COLOUR / FINISH TO BE MATCH WITH ARCHITECTURAL LAYOUT & ARCHITECT APPROVAL TO BE TAKEN PRIOR TO PRODUCT PROCUREMENT.
- ALL MCCB/ISOLATOR PANEL SHALL BE MADE ACCESSIBLE AT ALL TIME.
- N-01: SOCKET TO BE FIXED WITH ABOVE CEILING.
- N-02: SOCKET OUTLETS TO BE FIXED WITH TV INSTALLATION FRAME / ROD.
- N-03: SOCKET FIXING TO BE COORDINATE WITH SOK.

ALL DIMENSIONS MUST BE CHECKED ON SITE. INFORM THE ENGINEER OF ANY DISCREPANCIES PRIOR TO CONSTRUCTION.

NOTES: IRRESPECTIVE OF THE DRAWING(S), IT IS THE CONTRACTOR'S OBLIGATION AND RESPONSIBILITY THAT SHALL BE EXECUTED AND COMPLETED IN ACCORDANCE TO THE SPECIFICATION, DRAWING(S) AS WELL AS REQUIREMENT. THE SAID DRAWING(S) SHALL NOT RELIEVE CONTRACTOR FROM ANY OBLIGATION UNDER THE CONTRACT AND IN PARTICULAR UNDER ITS RESPONSIBILITY IN RELATION TO THE INSTALLATION MATERIALS AND WORKMANSHIP AND WHERE RELEVANT FROM A DUTY TO SEEK APPROVAL FROM THE COMPETENT AUTHORITY.

EQUIPMENT LIST	
TAG NO	EQUIPMENT
1	ELECTRICAL BROILER
2	2 DOORS FREEZER
3	3 DOORS CHILLER
5	FRYER PITCO
8	PRODUCT HOLDING UNIT
9	PRODUCT HOLDING UNIT
14	MOBILE FREEZER
18	SHAKE BLENDER
19	DROP IN ICE CREAM FREEZER
20	FRIES PACKING HOLDER
21	FRYER PITCO
23	MOBILE FREEZER
24	2 DOORS FREEZER
26	2 DOORS CHILLER
37	1 DOOR U/C BOTTLE COOLER
B-03	BEER CHILLING MACHINE
B-10	2 DOOR U/C BACK CHILLER
B-11	BLENDER M/C2 SPEED
B-14	MINI WATER PUMP
B-16	TABLE TOP ICE CUBE MACHINE
EQ-01	ICE CUBE MACHINE
EQ-02	GLASS WASHER
EQ-03	COCK MACHINE
EQ-04	DIGITAL DISPLAY
EXT1	WATER BOILER
EXT3	INSECT KILLER
SP-01	GENERAL SOCKET
SP-02	16A SPARE SOCKET
SP-03	20A SPARE SOCKET
SP-04	RO FILTER
SP-05	13A SPARE SOCKET
SP-06	FLY KILLER

C05 12.10.24 GOOD FOR CONSTRUCTION TT SM
REV DATE DESCRIPTION DSN CHK



PROJECT
CARLSJR FF018
GMR INTERNATIONAL
AIRPORT LIMITED,
HYDERABAD

DRAWING TITLE
POWER LAYOUT

SCALE 1:75 DATE 12.10.24 DESIGN TT A3 SHEET

STATUS
GOOD FOR CONSTRUCTION

ORG PROJECT NO DRAWING TYPE NUMBER REV
TFS 0000 ELEC E301 C05

PROJECT / BUILDING NAME :		FF018-CARLSJR																	
FED FROM :		EXISTING 25A TPN ISOLATOR																	
DISTRIBUTION BOARD / REF :		SMDB										DB AREA REFERENCE :						ELECTRICAL CLOSET @ KITCHEN	
MAIN INCOMING CABLE :		4R x 95SQ.MM FRLS/LSZH CU. WRES+ 1C x 50 SQ.MM ECC (FRLSH / LSZH)																	
DOCUMENT NO. :																			
MAIN INCOMING RATING (A)	CIRCUIT ID	BREAKER TYPE	BREAKER RATING (A)	WIRE SIZE (PH & N) (mm ²)	WIRE SIZE (EARTH) (mm ²)	EQUIP. TAG	CIRCUIT NAME / POINT REFERENCE	SOCKET RATING (A)	NUMBER OF POINTS	CONN. LOAD / POINT (W)	DIVERSITY TYPE	DIVERSITY FACTOR	R	Y	B	TOTAL CONN. LOAD (kW)	TOTAL DIVERSITY LOAD (kW)	REMARKS	
250A MCCB + ELR TRIP	RYB1	TP MCB	125A	25	16	-	LPDB	-	1	36414	-	-	11.60	12.35	12.47	36.41	29.51	-	
	RYB2	4P RCBO	63A	16	16	1	JET FLOW BROILER,ELECTRICAL BROILER WITH INCENDALYS	63A	1	21000	PWR	0.7	7.00	7.00	7.00	21.00	14.70	3 PH INDUSTRIAL SOCKET	
	RYB3	4P RCBO	32A	6	6	5 (A)	FRYER PITCO	32A	1	14000	PWR	0.7	4.67	4.67	4.67	14.00	9.80	3 PH INDUSTRIAL SOCKET	
	RYB4	4P RCBO	32A	6	6	5 (B)	FRYER PITCO	32A	1	14000	PWR	0.7	4.67	4.67	4.67	14.00	9.80	3 PH INDUSTRIAL SOCKET	
	RYB5	4P RCBO	32A	6	6	21 (A)	FRYER PITCO	32A	1	14000	PWR	0.7	4.67	4.67	4.67	14.00	9.80	3 PH INDUSTRIAL SOCKET	
	RYB6	4P RCBO	32A	6	6	21 (B)	FRYER PITCO	32A	1	14000	PWR	0.8	4.67	4.67	4.67	14.00	11.20	3 PH INDUSTRIAL SOCKET	
	RYB7	4P RCBO	20A	4	4	-	KITCHEN FRESH AIR FAN	20A	1	2200	PWR	1	0.73	0.73	0.73	2.20	2.20	TO BE INTERFACED WITH FA SYSTEM	
	RYB8	4P RCBO	20A	4	4	-	KITCHEN EXHAUST FAN	20A	1	3700	PWR	1	1.23	1.23	1.23	3.70	3.70	TO BE INTERFACED WITH FA SYSTEM	
	RYB9	TP MCB	25A	6	6	-	BAR DB	-	1	9350	-	-	2.65	3.40	3.30	9.35	7.88	-	
	R10	2P RCBO	16A	2.5	1.5	-	FCU	16A	1	1000	PWR	1	1.00			1.00	1.00	TO BE INTERFACED WITH FA SYSTEM	
	Y10	2P RCBO	16A	2.5	1.5	-	ESP UNIT	16A	1	300	PWR	1		0.30		0.30	0.30	-	
	B10	2P RCBO	16A	-	-	-	SPARE	-	1	500	PWR	0.5			0.50	0.50	0.25	-	
	RYB11	-	-	-	-	-	SPACE	-	-	-	-	-						-	
RYB12	-	-	-	-	-	SPACE	-	-	-	-	-						-		
												SMDB	42.88	43.68	43.90	130.46	100.14		
													TCL - R	TCL - Y	TCL - B	TCL	TDL		

ABBREVIATIONS : PWR - POWER, LTG - LIGHTING, UPS - UNINTERRUPTIBLE POWER SUPPLY, A - AMPS, W - WATTS, KW - KILOWATT, 1R - ONE RUN, 4C - FOUR CORE, 2C - TWO CORE, CU. - COPPER, ECC - EARTH CONTINUITY CONDUCTOR, CONN. - CONNECTED

ALL DIMENSIONS MUST BE CHECKED ON SITE. INFORM THE ENGINEER OF ANY DISCREPANCIES PRIOR TO CONSTRUCTION.

NOTES: IRRESPECTIVE OF THE DRAWING(S), IT IS THE CONTRACTOR'S OBLIGATION AND RESPONSIBILITY THAT SHALL BE EXECUTED AND COMPLETED IN ACCORDANCE TO THE SPECIFICATION, DRAWING(S) AS WELL AS REQUIREMENT. THE SAID DRAWING(S) SHALL NOT RELIEVE CONTRACTOR FROM ANY OBLIGATION UNDER THE CONTRACT AND IN PARTICULAR FROM ITS RESPONSIBILITY IN RELATION TO THE INSTALLATION MATERIALS AND WORKMANSHIP AND WHERE RELEVANT FROM A DUTY TO SEEK APPROVAL FROM THE COMPETENT AUTHORITY.

DISTRIBUTION BOARD / REF :		UPS DB (FED FROM LPDB)																	
FED FROM :		EXISTING 25A TPN ISOLATOR																	
DISTRIBUTION BOARD / REF :		UPS DB (FED FROM LPDB)										DB AREA REFERENCE :						ELECTRICAL CUPBOARD	
MAIN INCOMING CABLE :		2 R x 1C x 4 SQ.MM + 1C x 2.5 SQ.MM ECC, FRLSH / LSZH WRES																	
DOCUMENT NO. :																			
MAIN INCOMING RATING (A)	CIRCUIT ID	BREAKER TYPE	BREAKER RATING (A)	WIRE SIZE (PH & N) (mm ²)	WIRE SIZE (EARTH) (mm ²)	EQUIP. CODE	CIRCUIT NAME / POINT REFERENCE	SOCKET RATING (A)	NUMBER OF POINTS	CONN. LOAD / POINT (W)	DIVERSITY TYPE	DIVERSITY FACTOR	R	Y	B	TOTAL CONN. LOAD (kW)	TOTAL DIVERSITY LOAD (kW)	REMARKS	
25A 30mA RCBO	C1	MCB	10A	2.5	1.5	-	LED PANEL LIGHT + EXIT LIGHT + DOWN LIGHT + LED STRIP LI	-	13	25	LTG	1	-	-	0.33	0.33	0.33	-	
	C2	MCB	32A	2 x 4	2 x 2.5	-	POS COUNTER	13A	8	800	PWR	1	-	-	0.80	0.80	0.80	RING CIRCUIT	
	C3	MCB	20A	4	2.5	-	SOK	13A	1	200	PWR	1	-	-	0.20	0.20	0.20	RADIAL CIRCUIT	
	C4	MCB	16A	2.5	1.5	-	DVR	13A	1	300	PWR	1	-	-	0.30	0.30	0.30	-	
	C5	MCB	20A	4	2.5	-	COMPUTER	13A	4	200	PWR	1	-	-	0.80	0.80	0.80	RADIAL CIRCUIT	
	C6	MCB	20A	4	2.5	-	POS COUNTER	13A	4	400	PWR	1	-	-	0.40	0.40	0.40	RADIAL CIRCUIT	
												UPS DB	0.00	0.00	2.83	2.83	2.83		
													TCL - R	TCL - Y	TCL - B	TCL	TDL		

ABBREVIATIONS : PWR - POWER, LTG - LIGHTING, UPS - UNINTERRUPTIBLE POWER SUPPLY, A - AMPS, W - WATTS, KW - KILOWATT, 1R - ONE RUN, 4C - FOUR CORE, 2C - TWO CORE, CU. - COPPER, ECC - EARTH CONTINUITY CONDUCTOR, CONN. - CONNECTED

C05 12.10.24 GOOD FOR CONSTRUCTION TT SM
REV DATE DESCRIPTION DSN CHK



PROJECT
CARLSJR FF018
GMR INTERNATIONAL
AIRPORT LIMITED,
HYDERABAD

DRAWING TITLE
LOAD CALCULATION SHEET
SHEET 1 OF 3
SMDB & UPS DB

SCALE NTS DATE 12.10.24 DESIGN TT A3 SHEET

STATUS
GOOD FOR CONSTRUCTION

ORG PROJECT NO DRAWING TYPE NUMBER REV
TFS 0000 ELEC E101 C05

TOTAL CONNECTED LOAD	130.46	SMDB + LPDB + UPSDB + BAR DB	TCL (kW)
TOTAL DEMAND LOAD	100.14	SMDB + LPDB + UPSDB + BAR DB	TDL (kW)
AVERAGE DIVERSITY FACTOR	77%	SMDB + LPDB + UPSDB + BAR DB	(%)

DISTRIBUTION BOARD / REF :		LPDB (FED FROM SMDB)					DB AREA REFERENCE : KITCHEN AREA											
MAIN INCOMING CABLE :		4R x 25 SQ.MM FRLS/LSZH CU. WIRES+ 1C x 16 SQ.MM ECC (FRLSH / LSZH)					DOCUMENT NO. :											
MAIN INCOMER RATING (A)	CIRCUIT ID	BREAKER TYPE	BREAKER RATING (A)	WIRE SIZE (PH & N) (mm ²)	WIRE SIZE (EARTH) (mm ²)	EQUIP. TAG	CIRCUIT NAME / POINT REFERENCE	SOCKET RATING (A)	NUMBER OF POINTS	CONN. LOAD / POINT (W)	DIVERSITY TYPE	DIVERSITY FACTOR	R	Y	B	TOTAL CONN. LOAD (kW)	TOTAL DIVERSITY LOAD (kW)	REMARKS
100A 30mA RCBO	R1	MCB	10A	2.5	1.5	-	TRACK LIGHT + PENDANT LIGHT + SIGNAGE	-	17	331	LTG	1	0.33			0.33	0.33	-
	Y1	MCB	10A	2.5	1.5	-	TRACK LIGHT + SIGNAGE	-	19	455	LTG	1		0.46		0.46	0.46	-
	B1	MCB	10A	2.5	1.5	-	LED PANEL LIGHT	-	8	36	LTG	1			0.29	0.29	0.29	-
	R2	MCB	10A	2.5	1.5	-	CEILING LAMP + SIGNAGE + TRACK LIGHT	-	7	360	LTG	1	0.36			0.36	0.36	-
	Y2	MCB	10A	2.5	1.5	-	DOWN LIGHT + SIGNAGE	-	9	670	LTG	1		0.67		0.67	0.67	-
	B2	MCB	10A	2.5	1.5	-	TRACK LIGHT + SIGNAGE	-	18	545	LTG	1			0.55	0.55	0.55	-
	R3	MCB	16A	2.5	1.5	2	2 DOORS FREEZER	16A	1	560	PWR	1	0.56			0.56	0.56	-
	Y3	MCB	16A	2.5	1.5	3	2 DOORS CHILLER	16A	1	560	PWR	1		0.56		0.56	0.56	-
	B3	MCB	16A	2.5	1.5	8	PRODUCT HOLDING UNIT 4 WIDTH X2 HIGH VEG	16A	1	2500	PWR	0.7			2.50	2.50	1.75	-
	R4	MCB	16A	2.5	1.5	9	PRODUCT HOLDING UNIT 4 WIDTH X2 HIGH NON VEG	16A	1	2500	PWR	0.7	2.50			2.50	1.75	-
	Y4	MCB	16A	2.5	1.5	14	MOBILE FREEZER	16A	1	500	PWR	1		0.50		0.50	0.50	-
	B4	MCB	16A	2.5	1.5	18	SHAKE BLENDER	16A	1	500	PWR	0.8			0.50	0.50	0.40	-
	R5	MCB	16A	2.5	1.5	18	SHAKE BLENDER	16A	1	500	PWR	0.8	0.50			0.50	0.40	-
	Y5	MCB	16A	2.5	1.5	19	DROP IN ICE CREAM FREEZER WITH DIPPER WELL	16A	1	1000	PWR	1		1.00		1.00	1.00	-
	B5	MCB	20A	4	2.5	20	FRIES STATION WITH FRIES PACKING HOLDER	20A	1	1000	PWR	0.8			1.00	1.00	0.80	-
	R6	MCB	16A	2.5	1.5	23	MOBILE FREEZER	16A	1	500	PWR	1	0.50			0.50	0.50	-
	Y6	MCB	16A	2.5	1.5	24	2 DOORS FREEZER	16A	1	560	PWR	1		0.56		0.56	0.56	-
	B6	MCB	16A	2.5	1.5	26	2 DOORS CHILLER	16A	1	560	PWR	1			0.56	0.56	0.56	-
	R7	MCB	16A	2.5	1.5	37	SINGLE DOOR UNDER COUNTER BOTTLE COOLER	16A	1	500	PWR	1	0.50			0.50	0.50	-
	Y7	MCB	20A	4	2.5	EXT1	WATER BOILER	20A	1	3000	PWR	1		3.00		3.00	3.00	-
	B7	MCB	16A	-	-	-	SPARE	-	1	500	PWR	1			0.50	0.50	0.50	-
	R8	MCB	16A	2.5	1.5	EXT3	INSECT KILLER	16A	1	750	PWR	1	0.75			0.75	0.75	-
	Y8	MCB	20A	4	2.5	SP-03	20A SPARE SOCKET	20A	1	500	PWR	0.5		0.50		0.50	0.25	-
	B8	MCB	20A	4	2.5	-	UPS	-	1	2825	PWR	1			2.83	2.83	2.83	-
	R9	MCB	20A	4	2.5	SP-04	RO FILTER + WATER METER + BTU METER	16A	3	300	PWR	1	0.90			0.90	0.90	RADIAL CIRCUIT
	Y9	MCB	32A	2 x 4	2 x 2.5	SP-01	GENERAL SOCKET	13A	8	100	PWR	1		0.80		0.80	0.80	RING CIRCUIT
	B9	MCB	16A	2.5	1.5	SP-02	16A SPARE SOCKET	16A	1	500	PWR	0.5			0.50	0.50	0.25	-
	R10	MCB	32A	2 x 4	2 x 2.5	EQ-04	DIGITAL DISPLAY	13A	6	200	PWR	1	1.20			1.20	1.20	RING CIRCUIT
	Y10	MCB	16A	2.5	1.5	SP-02	16A SPARE SOCKET	16A	1	500	PWR	0.5		0.50		0.50	0.25	-
	B10	MCB	16A	2.5	1.5	SP-02	16A SPARE SOCKET	16A	1	500	PWR	0.5			0.50	0.50	0.25	-
	R11	MCB	16A	2.5	1.5	EQ-01	ICE CUBE MACHINE	16A	1	1000	PWR	1	1.00			1.00	1.00	-
	Y11	MCB	16A	2.5	1.5	EQ-02	GLASS WASHER	16A	1	1000	PWR	0.8		1.00		1.00	0.80	-
B11	MCB	16A	2.5	1.5	EQ-03	COCK MACHINE	16A	1	750	PWR	0.8			0.75	0.75	0.60	-	
R12	MCB	16A	2.5	1.5	SP-02	16A SPARE SOCKET	16A	1	500	PWR	0.5	0.50			0.50	0.25	-	
Y12	MCB	16A	2.5	1.5	SP-02	16A SPARE SOCKET	16A	1	500	PWR	0.5		0.50		0.50	0.25	-	
B12	MCB	16A	2.5	1.5	SP-02	16A SPARE SOCKET	16A	1	500	PWR	0.5			0.50	0.50	0.25	-	
R13	MCB	16A	2.5	1.5	SP-02	16A SPARE SOCKET	16A	1	500	PWR	0.5	0.50			0.50	0.25	-	
Y13	MCB	16A	2.5	1.5	SP-02	16A SPARE SOCKET	16A	1	500	PWR	0.5		0.50		0.50	0.25	-	
B13	MCB	16A	2.5	1.5	SP-02	16A SPARE SOCKET	16A	1	500	PWR	0.5			0.50	0.50	0.25	-	
R14	MCB	16A	2.5	1.5	SP-02	16A SPARE SOCKET	16A	1	500	PWR	0.5	0.50			0.50	0.25	-	
Y14	MCB	16A	2.5	1.5	SP-02	16A SPARE SOCKET	16A	1	500	PWR	0.5		0.50		0.50	0.25	-	
B14	MCB	16A	2.5	1.5	SP-02	16A SPARE SOCKET	16A	1	500	PWR	0.5			0.50	0.50	0.25	-	
R15	MCB	16A	2.5	1.5	SP-02	16A SPARE SOCKET	16A	1	500	PWR	0.5	0.50			0.50	0.25	-	
Y15	MCB	16A	2.5	1.5	SP-02	16A SPARE SOCKET	16A	1	500	PWR	0.5		0.50		0.50	0.25	-	
B15	MCB	16A	2.5	1.5	SP-02	16A SPARE SOCKET	16A	1	500	PWR	0.5			0.50	0.50	0.25	-	
R16	MCB	16A	2.5	1.5	SP-02	16A SPARE SOCKET	16A	1	500	PWR	0.5	0.50			0.50	0.25	-	
Y16	MCB	32A	2 x 4	2 x 2.5	SP-05	13A SPARE SOCKET	13A	8	100	PWR	0.5		0.80		0.80	0.40	RING CIRCUIT	
B16	MCB	-	-	-	-	SPACE	-	-	-	-	-	-	-	-	-	-	-	-
												LPDB	11.60	12.35	12.47	36.41	29.51	
													TCL - R	TCL - Y	TCL - B	TCL	TDL	

ABBREVIATIONS : PWR - POWER, LTG - LIGHTING, UPS - UNINTERRUPTIBLE POWER SUPPLY, A - AMPS, W - WATTS, KW - KILOWATT, 1R - ONE RUN, 4C - FOUR CORE, 2C - TWO CORE, CU. - COPPER, ECC - EARTH CONTINUITY CONDUCTOR, CONN. - CONNECTED

ALL DIMENSIONS MUST BE CHECKED ON SITE. INFORM THE ENGINEER OF ANY DISCREPANCIES PRIOR TO CONSTRUCTION.

NOTES: IRRESPECTIVE OF THE DRAWING(S), IT IS THE CONTRACTOR'S OBLIGATION AND RESPONSIBILITY THAT SHALL BE EXECUTED AND COMPLETED IN ACCORDANCE TO THE SPECIFICATION, DRAWING(S) AS WELL AS REQUIREMENT. THE SAID DRAWING(S) SHALL NOT RELIEVE CONTRACTOR FROM ITS OBLIGATION UNDER THE CONTRACT AND IN PARTICULAR FROM ITS RESPONSIBILITY IN RELATION TO THE INSTALLATION MATERIALS AND WORKMANSHIP AND WHERE RELEVANT FROM A DUTY TO SEEK APPROVAL FROM THE COMPETENT AUTHORITY.

C05 12.10.24 GOOD FOR CONSTRUCTION TT SM
REV DATE DESCRIPTION DSN CHK



PROJECT
CARLSJR FF018
GMR INTERNATIONAL
AIRPORT LIMITED,
HYDERABAD

DRAWING TITLE
LOAD CALCULATION SHEET
SHEET 2 OF 3
LPDB

SCALE NTS DATE 12.10.24 DESIGN TT A3 SHEET

STATUS
GOOD FOR CONSTRUCTION

ORG PROJECT NO DRAWING TYPE NUMBER REV
TFS 0000 ELEC E102 C05

ALL DIMENSIONS MUST BE CHECKED ON SITE.
INFORM THE ENGINEER OF ANY DISCREPANCIES PRIOR TO CONSTRUCTION.

NOTES:
IRRESPECTIVE OF THE DRAWING(S), IT IS THE CONTRACTOR'S OBLIGATION AND RESPONSIBILITY THAT SHALL BE EXECUTED AND COMPLETED IN ACCORDANCE TO THE SPECIFICATION, DRAWING(S) AS WELL AS REQUIREMENT. THE SAID DRAWING(S) SHALL NOT RELIEVE CONTRACTOR FROM ANY OBLIGATION UNDER THE CONTRACT AND IN PARTICULAR FROM ITS RESPONSIBILITY IN RELATION TO THE INSTALLATION MATERIALS AND WORKMANSHIP AND WHERE RELEVANT FROM A DUTY TO SEEK APPROVAL FROM THE COMPETENT AUTHORITY.

PROJECT / BUILDING NAME :		FF018-CARLSJR																
FED FROM :		SMDB (RYB9)																
DISTRIBUTION BOARD / REF :		BAR DB										DB AREA REFERENCE : KITCHEN AREA						
MAIN INCOMING CABLE :		4R x 6 SQ.MM FRLS/LSZH CU. WIRES + 1C x 6 SQ.MM ECC (FRLSH / LSZH)										DOCUMENT NO. :						
MAIN INCOMER RATING (A)	CIRCUIT ID	BREAKER TYPE	BREAKER RATING (A)	WIRE SIZE (PH & N) (mm ²)	WIRE SIZE (EARTH) (mm ²)	EQUIP. TAG	CIRCUIT NAME / POINT REFERENCE	SOCKET RATING (A)	NUMBER OF POINTS	CONN. LOAD / POINT (W)	DIVERSITY TYPE	DIVERSITY FACTOR	R	Y	B	TOTAL CONN. LOAD (kW)	TOTAL DIVERSITY LOAD (kW)	REMARKS
25A 4P 30mA RCBO	R1	MCB	10A	2.5	1.5	-	TRACK LIGHT	-	10	15	LTG	1	0.15			0.15	0.15	-
	Y1	MCB	16A	2.5	1.5	B-11	BLENDER M/C2 SPEED	16A	1	1200	PWR	0.7		1.20		1.20	0.84	-
	B1	MCB	16A	2.5	1.5	B-10	2 DOOR UNDERCOUNTER BACK CHILLER	16A	1	2100	PWR	1			2.10	2.10	2.10	-
	R2	MCB	16A	2.5	1.5	B-16	TABLE TOP ICE CUBE MACHINE	16A	1	1500	PWR	1	1.50			1.50	1.50	-
	Y2	MCB	16A	2.5	1.5	B-14	MINI WATER PUMP	16A	1	1200	PWR	0.7		1.20		1.20	0.84	-
	B2	MCB	16A	2.5	1.5	B-03	UNDERNEATH BEER CHILLING MACHINE	16A	1	1000	PWR	1			1.00	1.00	1.00	-
	R3	MCB	16A	2.5	1.5	SP-06	INSECT KILLER	13A	1	500	PWR	1	0.50			0.50	0.50	-
	Y3	MCB	16A	2.5	1.5	SP-02	16A SPARE SOCKET	16A	1	500	PWR	0.5		0.50		0.50	0.25	-
	B3	MCB	16A	2.5	1.5	EQ-04	DIGITAL DISPLAY	13A	1	200	PWR	1			0.20	0.20	0.20	-
	R4	MCB	16A	2.5	1.5	SP-02	16A SPARE SOCKET	16A	1	500	PWR	0.5	0.50			0.50	0.25	-
	Y4	MCB	20A	4	2.5	SP-03	20A SPARE SOCKET	20A	1	500	PWR	0.5		0.50		0.50	0.25	-
	B4	MCB	-	-	-	-	SPACE											
	RYB5	MCB	-	-	-	-	SPACE											
	RYB6	MCB	-	-	-	-	SPACE											
												BAR DB	2.65	3.40	3.30	9.35	7.88	
													TCL - R	TCL - Y	TCL - B	TCL	TDL	

ABBREVIATIONS : PWR - POWER, LTG - LIGHTING, UPS - UNINTERRUPTIBLE POWER SUPPLY, A - AMPS, W - WATTS, kW - KILOWATT, 1R - ONE RUN, 4C - FOUR CORE, 2C - TWO CORE, CU. - COPPER, ECC - EARTH CONTINUITY CONDUCTOR, CONN. - CONNECTED

TOTAL CONNECTED LOAD	9.35	TCL (kW)
TOTAL DEMAND LOAD	7.88	TDL (kW)
AVERAGE DIVERSITY FACTOR	84%	(%)

C05 12.10.24 GOOD FOR CONSTRUCTION TT SM
REV DATE DESCRIPTION DSN CHK



PROJECT
CARLSJR FF018
GMR INTERNATIONAL
AIRPORT LIMITED,
HYDERABAD

DRAWING TITLE
LOAD CALCULATION SHEET
SHEET 3 OF 3
BAR DB

SCALE NTS DATE 12.10.24 DESIGN TT A3 SHEET

STATUS
GOOD FOR CONSTRUCTION

ORG PROJECT NO DRAWING TYPE NUMBER REV
TFS 0000 ELEC E103 C05

ELECTRICAL SYSTEM LEGEND		
	MCB (MINIATURE CIRCUIT BREAKER)	--
	RCBO (RESIDUAL CURRENT CIRCUIT BREAKER WITH OVER CURRENT & SHORT CIRCUIT PROTECTION)	--
	MULTI FUNCTION METER - CT TYPE	--
	EARTH CONNECTION	--
	VOLTMETER	--
	VOLTAGE SELECTOR SWITCH	--
	AMMETER	--
	RYB INDICATOR LAMPS	--
	DIRECT ONLINE STARTER (D.O.L.)	--
	STAR / DELTA STARTER	--
	ELECTRICAL CABLE	--

NOTES

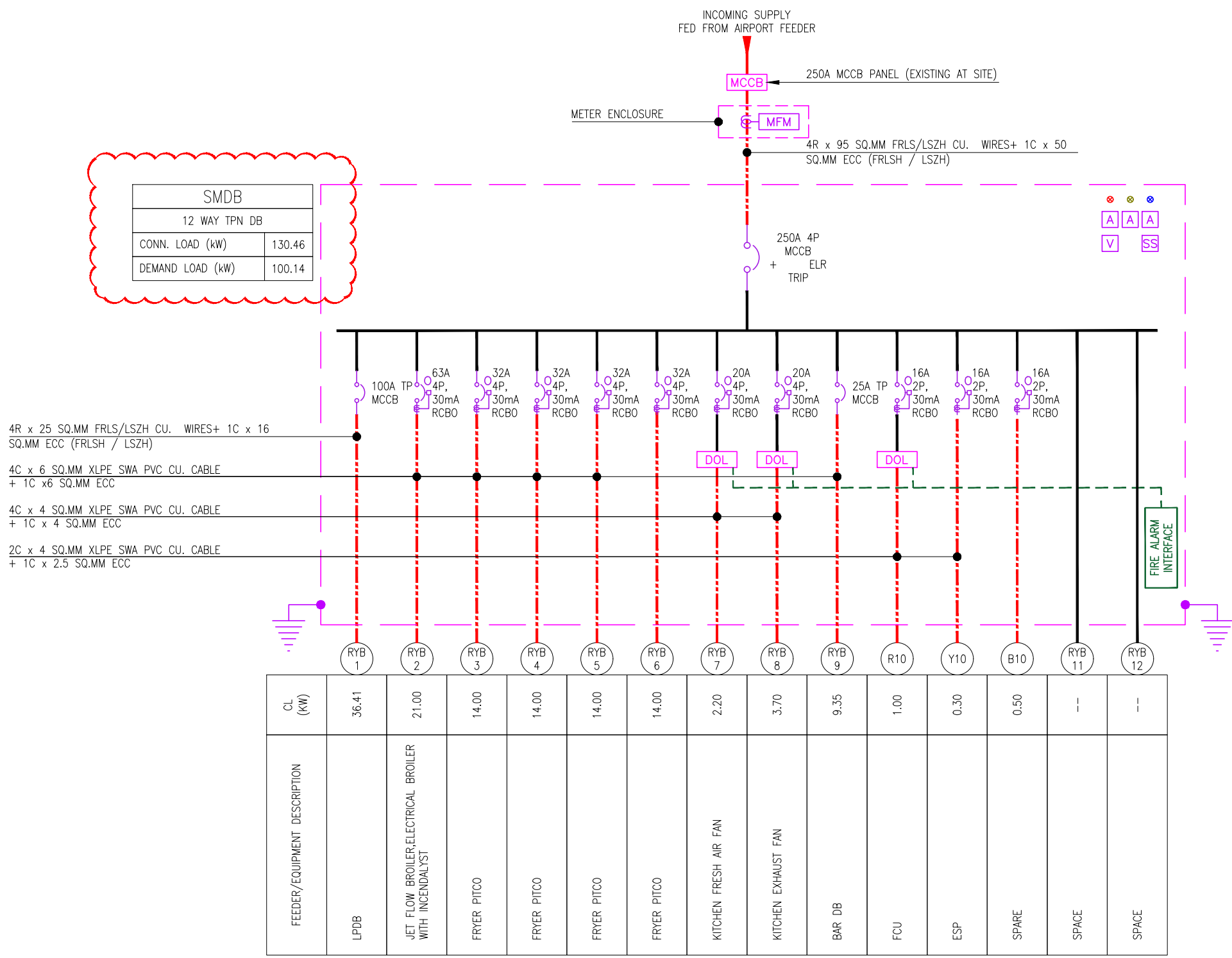
- CONTRACTOR TO CHECK & CONFIRM ACTUAL SITE CONDITIONS PRIOR TO START DEVELOPING THEIR SHOP DRAWINGS & WORK AT SITE.
- LAMINATED SINGLE LINE DIAGRAM & LOAD CALCULATION SHEET TO BE PROVIDED INSIDE / NEAR TO EACH ELECTRICAL PANEL / DB'S.
- ALL CABLES & WIRES MUST BE FRLS/LSZH.
- GI CONDUITS WITH SUITABLE DIAMETER TO BE USED.
- POWER FOR HVAC EQUIPMENTS TO BE SHUT DOWN DURING FIRE SITUATION BY INTERFACING WITH FACP.

ABBREVIATIONS

- FCU - FAN COIL UNIT
- ESP - ELECTROSTATIC PRECIPITATOR
- AHU - AIR HANDLING UNIT

ALL DIMENSIONS MUST BE CHECKED ON SITE. INFORM THE ENGINEER OF ANY DISCREPANCIES PRIOR TO CONSTRUCTION.

NOTES: IRRESPECTIVE OF THE DRAWING(S), IT IS THE CONTRACTOR'S OBLIGATION AND RESPONSIBILITY THAT SHALL BE EXECUTED AND COMPLETED IN ACCORDANCE TO THE SPECIFICATION, DRAWING(S) AS WELL AS REQUIREMENT. THE SAID DRAWING(S) SHALL NOT RELIEVE CONTRACTOR FROM ITS OBLIGATION UNDER THE CONTRACT AND IN PARTICULAR FROM ITS RESPONSIBILITY IN RELATION TO THE INSTALLATION MATERIALS AND WORKMANSHIP AND WHERE RELEVANT FROM A DUTY TO SEEK APPROVAL FROM THE COMPETENT AUTHORITY.



SMDB	
12 WAY TPN DB	
CONN. LOAD (kW)	130.46
DEMAND LOAD (kW)	100.14

C05 12.10.24 GOOD FOR CONSTRUCTION TT SM
REV DATE DESCRIPTION DSN CHK



PROJECT
CARLSJR FF018
GMR INTERNATIONAL
AIRPORT LIMITED,
HYDERABAD

DRAWING TITLE
ELECTRICAL SLD

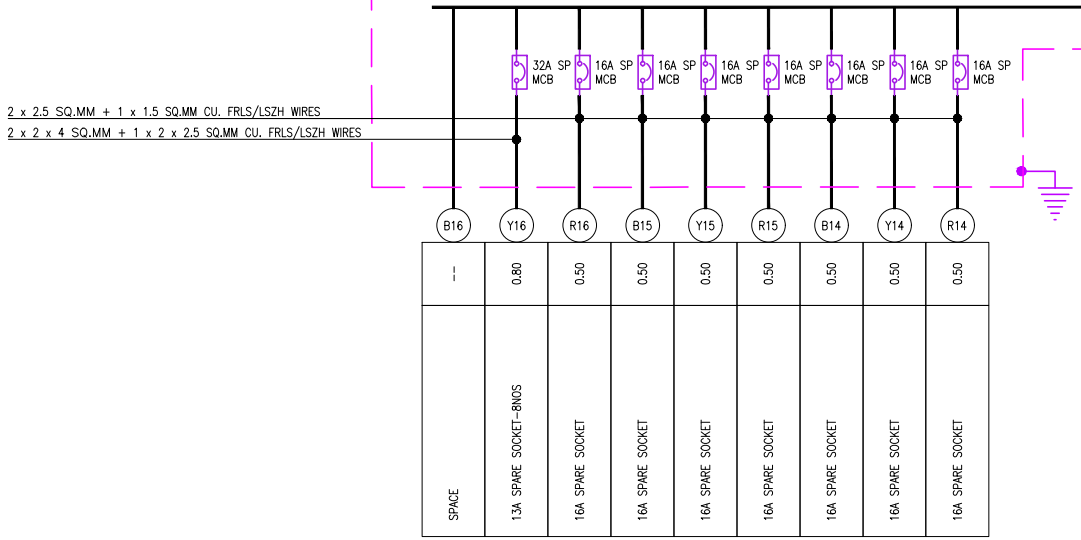
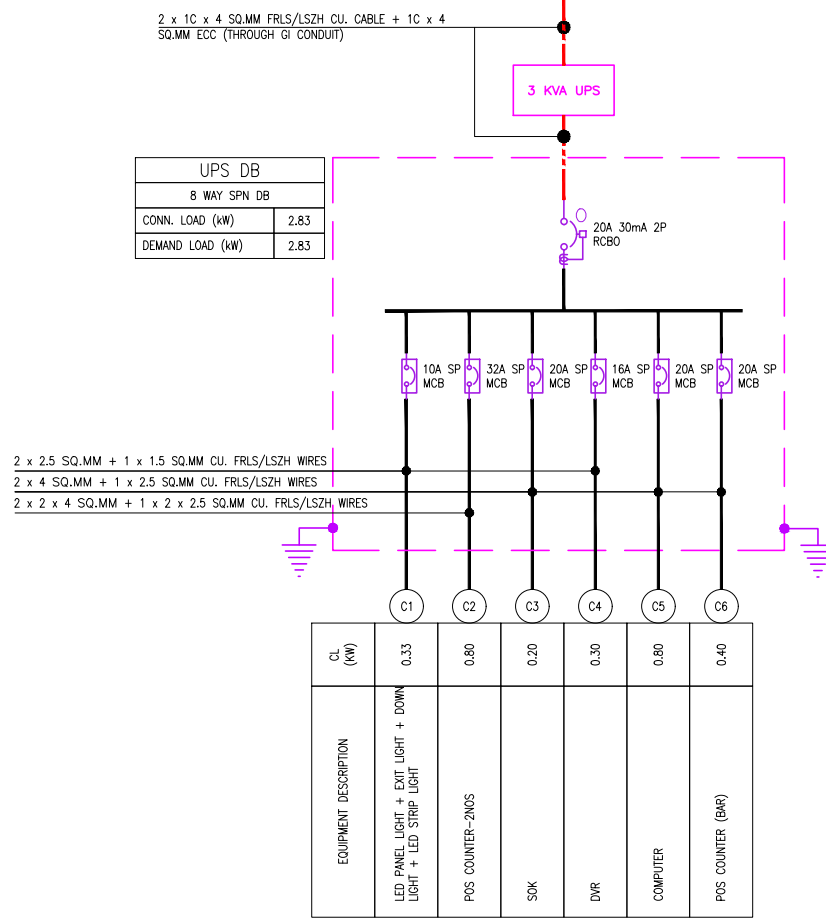
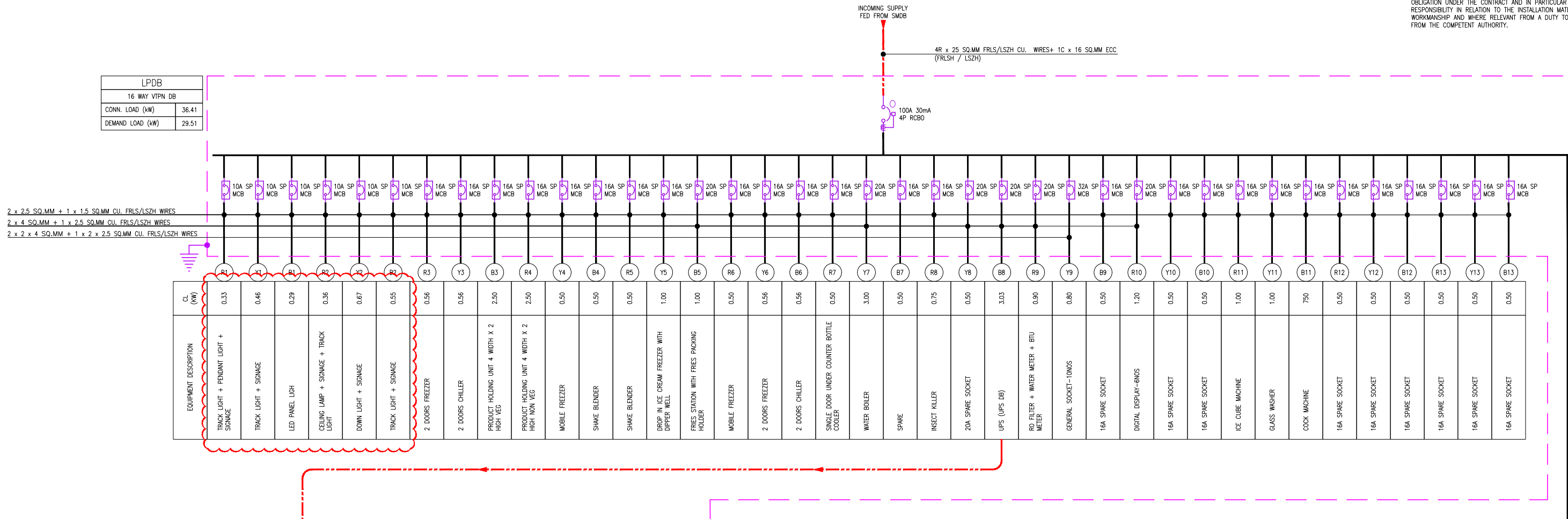
SCALE NTS DATE 12.10.24 DESIGN TT A3 SHEET

STATUS
GOOD FOR CONSTRUCTION

ORG PROJECT NO DRAWING TYPE NUMBER REV
TFS 0000 ELEC E201 C05

ALL DIMENSIONS MUST BE CHECKED ON SITE.
INFORM THE ENGINEER OF ANY DISCREPANCIES PRIOR TO CONSTRUCTION.

NOTES:
IRRESPECTIVE OF THE DRAWING(S), IT IS THE CONTRACTOR'S OBLIGATION AND RESPONSIBILITY THAT SHALL BE EXECUTED AND COMPLETED IN ACCORDANCE TO THE SPECIFICATION, DRAWING(S) AS WELL AS REQUIREMENT. THE SAID DRAWING(S) SHALL NOT RELIEVE CONTRACTOR FROM ITS OBLIGATION UNDER THE CONTRACT AND IN PARTICULAR FROM ITS RESPONSIBILITY IN RELATION TO THE INSTALLATION MATERIALS AND WORKMANSHIP AND WHERE RELEVANT FROM A DUTY TO SEEK APPROVAL FROM THE COMPETENT AUTHORITY.



ELECTRICAL SYSTEM LEGEND		
	MCB (MINIATURE CIRCUIT BREAKER)	--
	RCBO (RESIDUAL CURRENT CIRCUIT BREAKER WITH OVER CURRENT & SHORT CIRCUIT PROTECTION)	--
	MULTI FUNCTION METER - CT TYPE	--
	EARTH CONNECTION	--
	VOLTMETER	--
	VOLTAGE SELECTOR SWITCH	--
	AMMETER	--
	RYB INDICATOR LAMPS	--
	DIRECT ONLINE STARTER (D.O.L.)	--
	STAR / DELTA STARTER	--
	ELECTRICAL CABLE	--

NOTES:

- CONTRACTOR TO CHECK & CONFIRM ACTUAL SITE CONDITIONS PRIOR TO START DEVELOPING THEIR SHOP DRAWINGS & WORK AT SITE.
- LAMINATED SINGLE LINE DIAGRAM & LOAD CALCULATION SHEET TO BE PROVIDED INSIDE / NEAR TO EACH ELECTRICAL PANEL / DB'S.
- ALL CABLES & WIRES MUST BE FRLS/LSZH.
- GI CONDUITS WITH SUITABLE DIAMETER TO BE USED.
- POWER FOR HVAC EQUIPMENTS TO BE SHUT DOWN DURING FIRE SITUATION BY INTERFACING WITH FACP.

ABBREVIATIONS

- FCU - FAN COIL UNIT
- ESP - ELECTROSTATIC PRECIPITATOR
- AHU - AIR HANDLING UNIT

C05 12.10.24 GOOD FOR CONSTRUCTION TT SM
REV DATE DESCRIPTION DSN CHK



PROJECT
CARLSJR FF018
GMR INTERNATIONAL
AIRPORT LIMITED,
HYDERABAD

DRAWING TITLE
ELECTRICAL SLD

SCALE NTS DATE 12.10.24 DESIGN TT A3 SHEET

STATUS
GOOD FOR CONSTRUCTION

ORG PROJECT NO DRAWING TYPE NUMBER REV
TFS 0000 ELEC E202 C05

ALL DIMENSIONS MUST BE CHECKED ON SITE.
INFORM THE ENGINEER OF ANY DISCREPANCIES PRIOR TO CONSTRUCTION.

NOTES:
IRRESPECTIVE OF THE DRAWING(S), IT IS THE CONTRACTOR'S OBLIGATION AND RESPONSIBILITY THAT SHALL BE EXECUTED AND COMPLETED IN ACCORDANCE TO THE SPECIFICATION, DRAWING(S) AS WELL AS REQUIREMENT. THE SAID DRAWING(S) SHALL NOT RELIEVE CONTRACTOR FROM ITS OBLIGATION UNDER THE CONTRACT AND IN PARTICULAR FROM ITS RESPONSIBILITY IN RELATION TO THE INSTALLATION MATERIALS AND WORKMANSHIP AND WHERE RELEVANT FROM A DUTY TO SEEK APPROVAL FROM THE COMPETENT AUTHORITY.

ELECTRICAL SYSTEM LEGEND		
	MCB (MINIATURE CIRCUIT BREAKER)	--
	RCBO (RESIDUAL CURRENT CIRCUIT BREAKER WITH OVER CURRENT & SHORT CIRCUIT PROTECTION)	--
	MULTI FUNCTION METER - CT TYPE	--
	EARTH CONNECTION	--
	VOLTMETER	--
	VOLTAGE SELECTOR SWITCH	--
	AMMETER	--
	RYB INDICATOR LAMPS	--
	DIRECT ONLINE STARTER (D.O.L.)	--
	STAR / DELTA STARTER	--
	ELECTRICAL CABLE	--

NOTES

- CONTRACTOR TO CHECK & CONFIRM ACTUAL SITE CONDITIONS PRIOR TO START DEVELOPING THEIR SHOP DRAWINGS & WORK AT SITE.
- LAMINATED SINGLE LINE DIAGRAM & LOAD CALCULATION SHEET TO BE PROVIDED INSIDE / NEAR TO EACH ELECTRICAL PANEL / DB'S.
- ALL CABLES & WIRES MUST BE FRLS/LSZH.
- GI CONDUITS WITH SUITABLE DIAMETER TO BE USED.
- POWER FOR HVAC EQUIPMENTS TO BE SHUT DOWN DURING FIRE SITUATION BY INTERFACING WITH FACP.

ABBREVIATIONS

- FCU - FAN COIL UNIT
- ESP - ELECTROSTATIC PRECIPITATOR
- AHU - AIR HANDLING UNIT

C05 12.10.24 GOOD FOR CONSTRUCTION TT SM
REV DATE DESCRIPTION DSN CHK



PROJECT
CARLSJR FF018
GMR INTERNATIONAL
AIRPORT LIMITED,
HYDERABAD

DRAWING TITLE
ELECTRICAL SLD

SCALE NTS DATE 12.10.24 DESIGN TT A3 SHEET

STATUS
GOOD FOR CONSTRUCTION

ORG PROJECT NO DRAWING TYPE NUMBER REV
TFS 0000 ELEC E203 C05

