

# IN-DXN-FOOD MAHAL-IDLI.COM-M&E DRAWINGS

ALL DIMENSIONS MUST BE CHECKED ON SITE  
INFORM THE ENGINEER OF ANY DISCREPANCIES PRIOR TO CONSTRUCTION

NOTES:  
IRRESPECTIVE OF THE DRAWING(S), IT IS THE CONTRACTOR'S OBLIGATION AND RESPONSIBILITY THAT SHALL BE EXECUTED AND COMPLETED IN ACCORDANCE TO THE SPECIFICATION, DRAWING(S) AS WELL AS REQUIREMENT. THE SAID DRAWING(S) SHALL NOT RELIEVE CONTRACTOR FROM ITS OBLIGATION UNDER THE CONTRACT AND IN PARTICULAR FROM ITS RESPONSIBILITY IN RELATION TO THE INSTALLATION MATERIALS AND WORKMANSHIP AND WHERE RELEVANT FROM A DUTY TO SEEK APPROVAL FROM THE COMPETENT AUTHORITY.

CONTENTS		
DWG NO.	DRAWING TITLE	PAGE NO.
M101	IN-DXN-FOOD MAHAL-IDLI.COM-HVAC LAYOUT ON RCP	01
M101	IN-DXN-FOOD MAHAL-IDLI.COM-HVAC LAYOUT ON PLAN	02
E101	IN-DXN-FOOD MAHAL-IDLI.COM-ELECTRICAL SLD	03
E201	IN-DXN-FOOD MAHAL-IDLI.COM-LOAD CALCULATION SHEET - LPDB 02	04
E301	IN-DXN-FOOD MAHAL-IDLI.COM-POWER LAYOUT	05
E401	IN-DXN-FOOD MAHAL-IDLI.COM-LIGHTING LAYOUT	06
E501	IN-DXN-FOOD MAHAL-IDLI.COM-CCTV & DATA LAYOUT	07
E601	IN-DXN-FOOD MAHAL-IDLI.COM-CONTAINMENT LAYOUT	08
P101	IN-DXN-FOOD MAHAL-IDLI.COM-DRAINAGE LAYOUT	09
P102	IN-DXN-FOOD MAHAL-IDLI.COM-DRAINAGE SCHEMATIC LAYOUT	10
P201	IN-DXN-FOOD MAHAL-IDLI.COM-WATER SUPPLY LAYOUT	11
P202	IN-DXN-FOOD MAHAL-IDLI.COM-WATER SUPPLY SCHEMATIC LAYOUT	12
P301	IN-DXN-FOOD MAHAL-IDLI.COM-GAS SUPPLY LAYOUT	13
F101	IN-DXN-FOOD MAHAL-IDLI.COM-FIRE ALARM LAYOUT	14
F201	IN-DXN-FOOD MAHAL-IDLI.COM-FIRE SPRINKLER LAYOUT	15
F202	IN-DXN-FOOD MAHAL-IDLI.COM-FIRE SPRINKLER PENDANT COVERAGE AREA LAYOUT	16
F301	IN-DXN-FOOD MAHAL-IDLI.COM-FIRE EXTINGUISHER LAYOUT	17
X101	IN-DXN-FOOD MAHAL-IDLI.COM-M&E RCP COORDINATION LAYOUT	18

TOO	10.12.24	ISSUED FOR TENDER	MB	RR
REV	DATE	DESCRIPTION	DSN	CHK



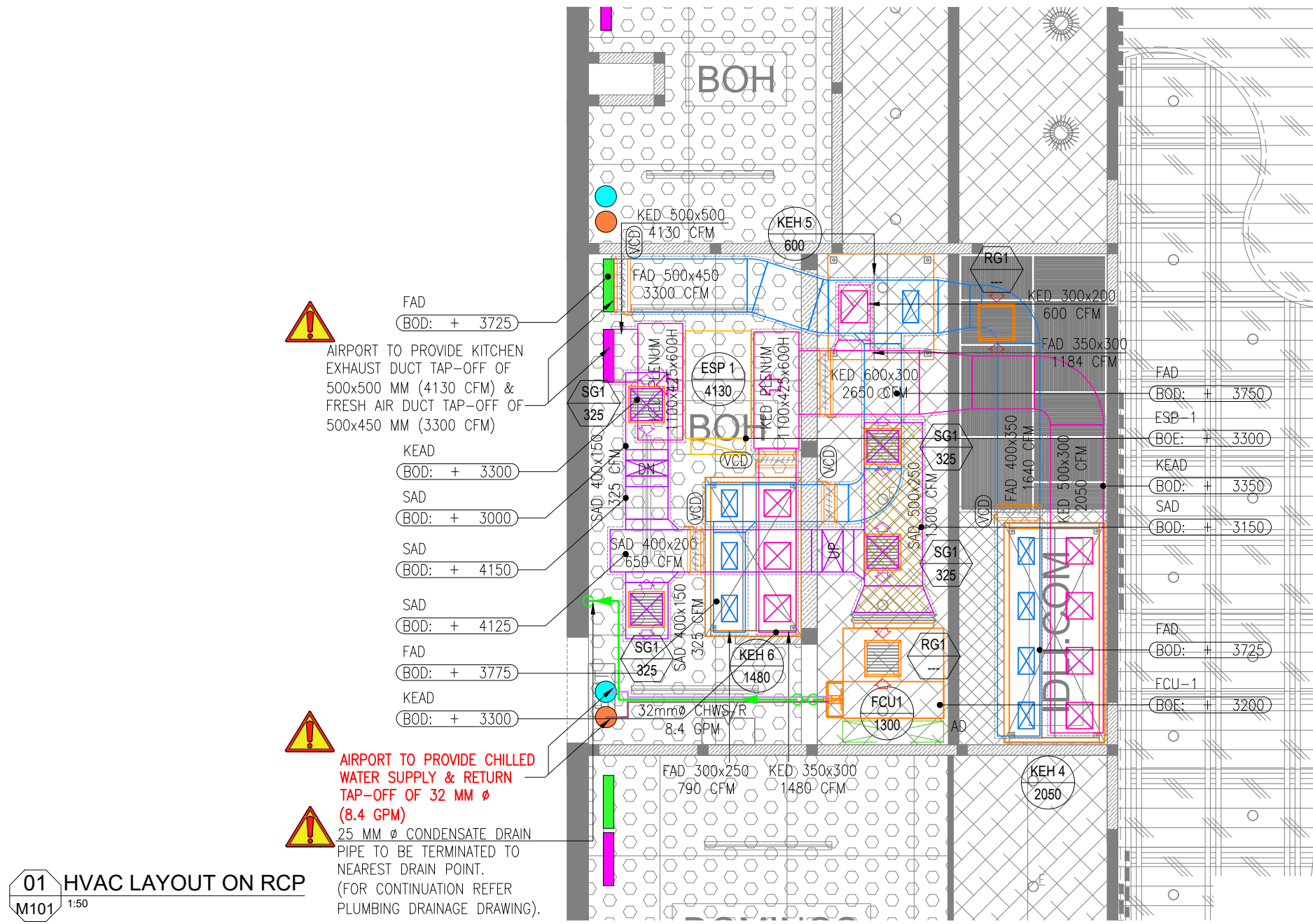
PROJECT  
F03-07 DOMINOS, B.GALIYAN, IDLY  
NOIDA INTERNATIONAL  
AIRPORT LIMITED

DRAWING TITLE  
TITLE SHEET  
IDLI.COM

SCALE 1:75      DATE 10.12.24      DESIGNMB      A3 SHEET

STATUS  
TENDER

ORG	PROJECT NO	DRAWING TYPE	NUMBER	REV
TFS	XXXX	GEN	G101	T00



**HVAC NOTES:**

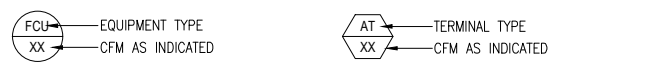
- ALL DIMENSIONS ARE IN MM UNLESS OTHERWISE SPECIFIED.
- THIS IS A SCHEMATIC/ CONCEPTUAL DRAWING ONLY TO ARTICULATE THE DESIGN INTENT. POST RECEIPT OF DETAILED SURVEY\*\*, THE DRAWINGS WILL BE AMENDED/ DETAILED FURTHER.
- ALL HVAC EQUIPMENTS IS TO BE INTEGRATED WITH AIRPORT FIRE ALARM SYSTEM. FOR MORE DETAILS PLEASE CHECK FIRE ALARM DRAWING.
- TECHNICAL DATA SHEET FOR MS PIPE, INSULATION, VALVES, TEMPERATURE & PRESSURE GAUGE, GRILLES, DIFFUSERS, DAMPERS etc. NEEDS TO BE FACILITATED AND GET APPROVED BY AIRPORT AUTHORITY PRIOR TO THE INSTALLATION.
- ALL AIR TERMINALS SHOULD BE CONNECTED TO THE SUPPLY/EXTRACT AIR DUCTS THROUGH AN OPPOSED BLADE DAMPER (OBD).
- VOLUME CONTROL DAMPERS SHALL BE PROVIDED FOR ALL HOOD CONNECTIONS
- ALL HVAC SERVICE ELEVATIONS MARKED IN THE DRAWINGS ARE FROM 0.00 LVL.
- KITCHEN HOOD FIRE SUPPRESSION SYSTEM DESIGN, DETAILING AND INSTALLATION TO BE DONE BY SPECIALIST VENDOR. THE HVAC CONTRACTOR IS TO COORDINATE WITH THE SPECIALIST VENDOR TO ENSURE THAT THE SAME IS EXECUTED AT SITE.(ALL HOODS).

**HVAC DUCTING LEGEND**

SYMBOL	DESCRIPTION	SYMBOL	DESCRIPTION
	FAN COIL UNIT - HIGH STATIC		SUPPLY AIR LINEAR GRILLE
	DRY SCRUBBER		RETURN AIR LINEAR GRILLE
	KITCHEN HOOD		FRESH AIR SQUARE GRILLE
	SUPPLY AIR DUCT WITH 13mm THICK THERMAL INSULATION		VOLUME CONTROL DAMPER
	FRESH AIR DUCT WITH 25mm THICK THERMAL INSULATION		CHILLED WATER SUPPLY LINE
	EXHAUST AIR DUCT WITH 25mm THICK FIRE BOARD INSULATION		CHILLED WATER RETURN LINE
	ACOUSTIC INSULATION 15mm THICK		CONDENSATE DRAIN WATER LINE

**HVAC ABBREVIATIONS**

FCU	FAN COIL UNIT - HIGH STATIC	SG	SUPPLY GRILLE
ESP	DRY SCRUBBER	VCD	VOLUME CONTROL DAMPER
H	KITCHEN HOOD	CHWS	CHILLED WATER SUPPLY LINE
SAD	SUPPLY AIR DUCT	CHWR	CHILLED WATER RETURN LINE
FAD	FRESH AIR DUCT	CD	CONDENSATE DRAIN LINE
KED	KITCHEN EXHAUST AIR DUCT		



**HVAC EQUIPMENT SCHEDULE**

TAG	EQUIPMENT TYPE	COOLING CAPACITY (TR)	AIR FLOW (CFM)	WATER FLOW (GPM)
FCU 1	FAN COIL UNIT - HIGH STATIC	3.5	1300	8.4
ESP 1	HVACROSTATIC PRECIPITATOR	--	4130	--

**NOTE:**  
(ASSUMED CHILLED WATER SUPPLY & RETURN DELTA T IS 10°F)

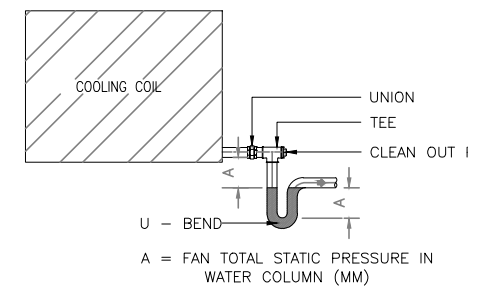
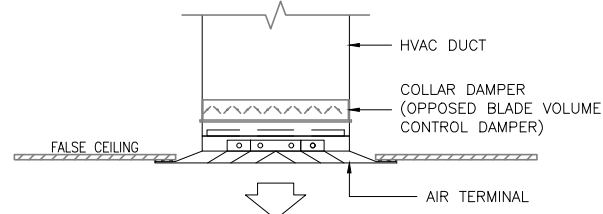
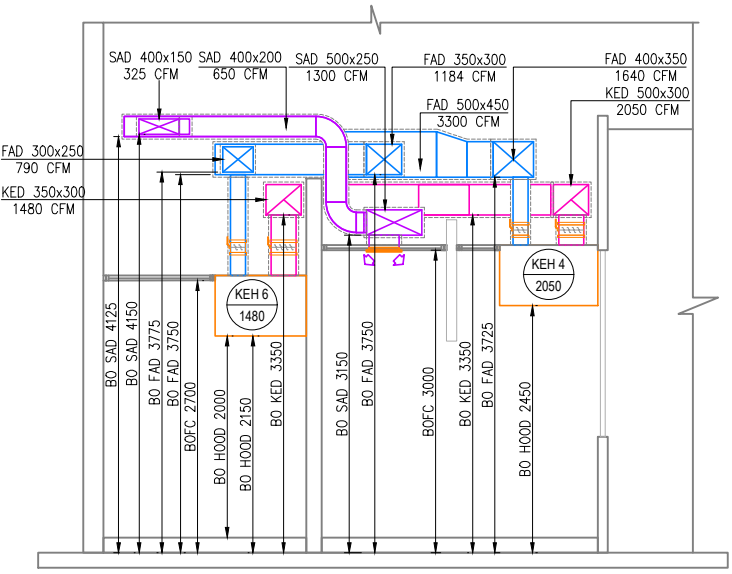
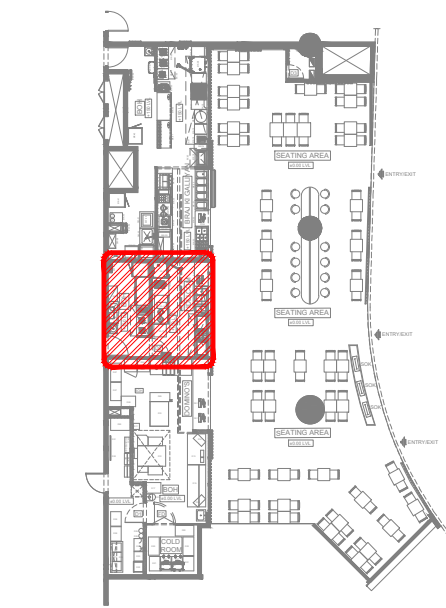
**AIR TERMINAL SCHEDULE - DIFFUSERS/GRILLE**

TAG	SERVICE	NECK SIZE (mm)	PATTERN	MATERIAL	REMARKS
SG1	SUPPLY AIR	300x300	2 WAY	ALUMINIUM	SQUARE GRILLE
RG1	RETURN AIR	300x300	2 WAY	ALUMINIUM	SQUARE GRILLE

**NOTE:**  
ALL AIR TERMINALS COLOUR & FINISH IS TO BE ADVISED BY ARCHITECT.

ALL DIMENSIONS MUST BE CHECKED ON SITE INFORM THE ENGINEER OF ANY DISCREPANCIES PRIOR TO CONSTRUCTION

**NOTES:**  
IRRESPECTIVE OF THE DRAWING(S), IT IS THE CONTRACTOR'S OBLIGATION AND RESPONSIBILITY THAT SHALL BE EXECUTED AND COMPLETED IN ACCORDANCE TO THE SPECIFICATION, DRAWING(S) AS WELL AS REQUIREMENT. THE SAID DRAWING(S) SHALL NOT RELIEVE CONTRACTOR FROM ITS OBLIGATION UNDER THE CONTRACT AND IN PARTICULAR FROM ITS RESPONSIBILITY IN RELATION TO THE INSTALLATION MATERIALS AND WORKMANSHIP AND WHERE RELEVANT FROM A DUTY TO SEEK APPROVAL FROM THE COMPETENT AUTHORITY.



T00	10.12.24	ISSUED FOR TENDER	SF	RR
REV	DATE	DESCRIPTION	DSN	CHK



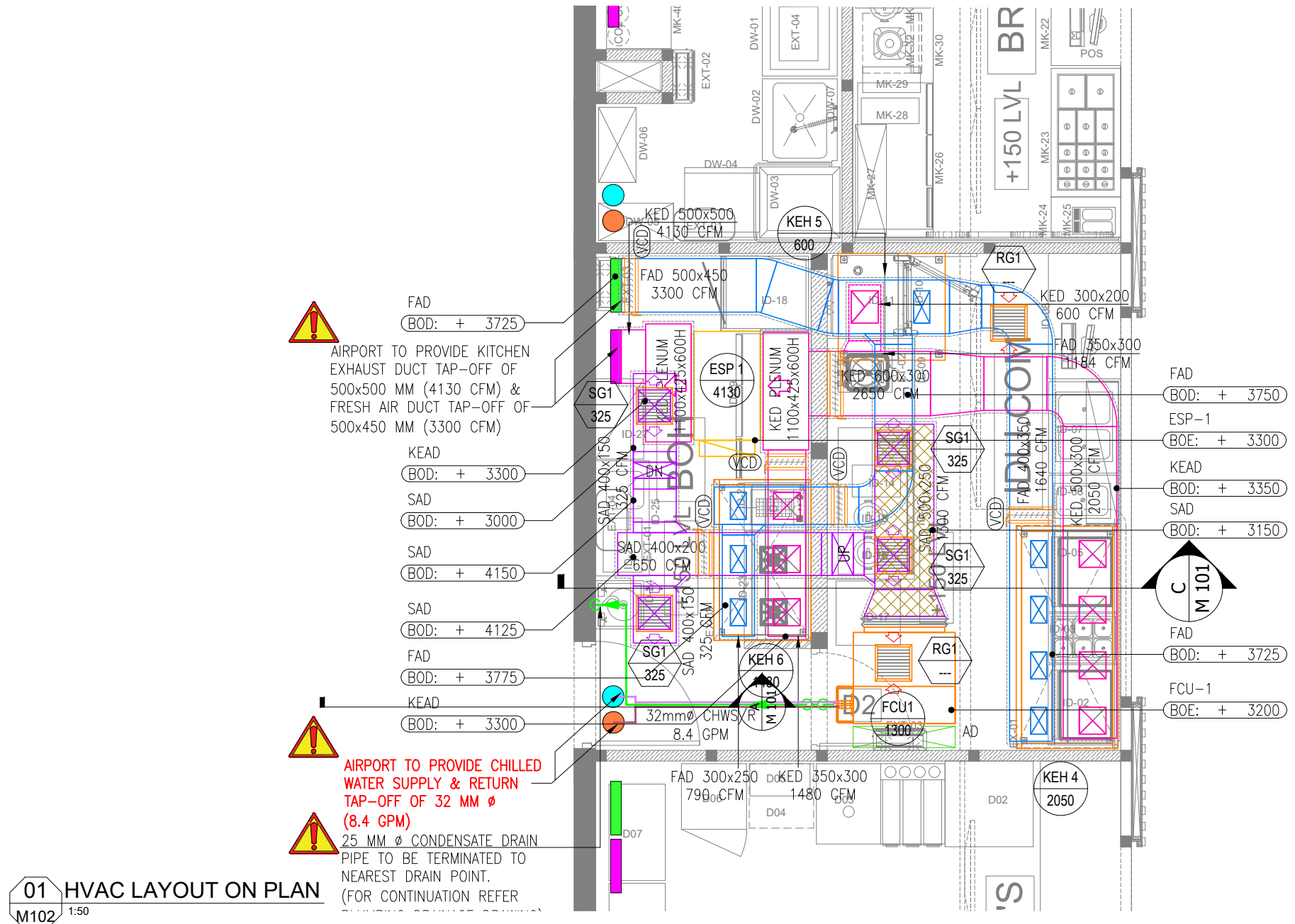
**PROJECT**  
F03-07 DOMINOES, B.GALIYAN, IDLI NOIDA INTERNATIONAL AIRPORT LIMITED

**DRAWING TITLE**  
HVAC LAYOUT ON RCP

SCALE 1:50 DATE 10.12.24 DESIGN SF A3 SHEET

STATUS  
TENDER

ORG PROJECT NO DRAWING TYPE NUMBER REV  
TFS XXXX HVAC M101T00



**!** AIRPORT TO PROVIDE KITCHEN EXHAUST DUCT TAP-OFF OF 500x500 MM (4130 CFM) & FRESH AIR DUCT TAP-OFF OF 500x450 MM (3300 CFM)

KEAD (BOD: + 3300)  
SAD (BOD: + 3000)  
SAD (BOD: + 4150)  
SAD (BOD: + 4125)  
FAD (BOD: + 3775)  
KEAD (BOD: + 3300)

**!** AIRPORT TO PROVIDE CHILLED WATER SUPPLY & RETURN TAP-OFF OF 32 MM Ø (8.4 GPM)

**!** 25 MM Ø CONDENSATE DRAIN PIPE TO BE TERMINATED TO NEAREST DRAIN POINT. (FOR CONTINUATION REFER

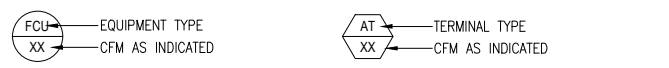
- HVAC NOTES:**
- ALL DIMENSIONS ARE IN MM UNLESS OTHERWISE SPECIFIED.
  - THIS IS A SCHEMATIC/ CONCEPTUAL DRAWING ONLY TO ARTICULATE THE DESIGN INTENT. POST RECEIPT OF DETAILED SURVEY\*\*, THE DRAWINGS WILL BE AMENDED/ DETAILED FURTHER.
  - ALL HVAC EQUIPMENTS IS TO BE INTEGRATED WITH AIRPORT FIRE ALARM SYSTEM. FOR MORE DETAILS PLEASE CHECK FIRE ALARM DRAWING.
  - TECHNICAL DATA SHEET FOR MS PIPE, INSULATION, VALVES, TEMPERATURE & PRESSURE GAUGE, GRILLES, DIFFUSERS, DAMPERS etc. NEEDS TO BE FACILITATED AND GET APPROVED BY AIRPORT AUTHORITY PRIOR TO THE INSTALLATION.
  - ALL AIR TERMINALS SHOULD BE CONNECTED TO THE SUPPLY/EXTRACT AIR DUCTS THROUGH AN OPPOSED BLADE DAMPER (OBD).
  - VOLUME CONTROL DAMPERS SHALL BE PROVIDED FOR ALL HOOD CONNECTIONS
  - All HVAC SERVICE ELEVATIONS MARKED IN THE DRAWINGS ARE FROM 0.00 LVL.
  - KITCHEN HOOD FIRE SUPPRESSION SYSTEM DESIGN, DETAILING AND INSTALLATION TO BE DONE BY SPECIALIST VENDOR. THE HVAC CONTRACTOR IS TO COORDINATE WITH THE SPECIALIST VENDOR TO ENSURE THAT THE SAME IS EXECUTED AT SITE.(ALL HOODS).

**HVAC DUCTING LEGEND**

SYMBOL	DESCRIPTION	SYMBOL	DESCRIPTION
	FAN COIL UNIT - HIGH STATIC		SUPPLY AIR LINEAR GRILLE
	DRY SCRUBBER		RETURN AIR LINEAR GRILLE
	KITCHEN HOOD		FRESH AIR SQUARE GRILLE
	SUPPLY AIR DUCT WITH 13mm THICK THERMAL INSULATION		VOLUME CONTROL DAMPER
	FRESH AIR DUCT WITH 25mm THICK THERMAL INSULATION		CHILLED WATER SUPPLY LINE
	EXHAUST AIR DUCT WITH 25mm THICK FIRE BOARD INSULATION		CHILLED WATER RETURN LINE
	ACOUSTIC INSULATION 15mm THICK		CONDENSATE DRAIN WATER LINE

**HVAC ABBREVIATIONS**

FCU	FAN COIL UNIT - HIGH STATIC	SG	SUPPLY GRILLE
ESP	DRY SCRUBBER	VCD	VOLUME CONTROL DAMPER
H	KITCHEN HOOD	CHWS	CHILLED WATER SUPPLY LINE
SAD	SUPPLY AIR DUCT	CHWR	CHILLED WATER RETURN LINE
FAD	FRESH AIR DUCT	CD	CONDENSATE DRAIN LINE
KED	KITCHEN EXHAUST AIR DUCT		



**HVAC EQUIPMENT SCHEDULE**

TAG	EQUIPMENT TYPE	COOLING CAPACITY (TR)	AIR FLOW (CFM)	WATER FLOW (GPM)
FCU 1	FAN COIL UNIT - HIGH STATIC	3.5	1300	8.4
ESP 1	HVACTROSTATIC PRECIPITATOR	--	4130	--

NOTE:  
(ASSUMED CHILLED WATER SUPPLY & RETURN DELTA T IS 10°F)

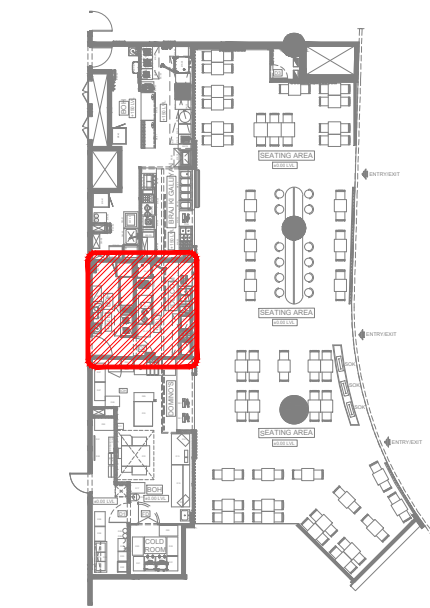
**AIR TERMINAL SCHEDULE - DIFFUSERS/GRILLE**

TAG	SERVICE	NECK SIZE (mm)	PATTERN	MATERIAL	REMARKS
SG1	SUPPLY AIR	300x300	2 WAY	ALUMINIUM	SQUARE GRILLE
RG1	RETURN AIR	300x300	2 WAY	ALUMINIUM	SQUARE GRILLE

NOTE:  
ALL AIR TERMINALS COLOUR & FINISH IS TO BE ADVISED BY ARCHITECT.

ALL DIMENSIONS MUST BE CHECKED ON SITE INFORM THE ENGINEER OF ANY DISCREPANCIES PRIOR TO CONSTRUCTION

NOTES:  
IRRESPECTIVE OF THE DRAWING(S), IT IS THE CONTRACTOR'S OBLIGATION AND RESPONSIBILITY THAT SHALL BE EXECUTED AND COMPLETED IN ACCORDANCE TO THE SPECIFICATION, DRAWING(S) AS WELL AS REQUIREMENT. THE SAID DRAWING(S) SHALL NOT RELIEVE CONTRACTOR FROM ITS OBLIGATION UNDER THE CONTRACT AND IN PARTICULAR FROM ITS RESPONSIBILITY IN RELATION TO THE INSTALLATION MATERIALS AND WORKMANSHIP AND WHERE RELEVANT FROM A DUTY TO SEEK APPROVAL FROM THE COMPETENT AUTHORITY.



**05 KEY PLAN**  
NTS

T00 10.12.24 ISSUED FOR TENDER SF RR  
REV DATE DESCRIPTION DSN CHK



PROJECT  
**IDLI.COM**  
NOIDA INTERNATIONAL AIRPORT LIMITED

DRAWING TITLE  
**HVAC LAYOUT ON PLAN**

SCALE 1:50 DATE 10.12.24 DESIGN SF A3 SHEET

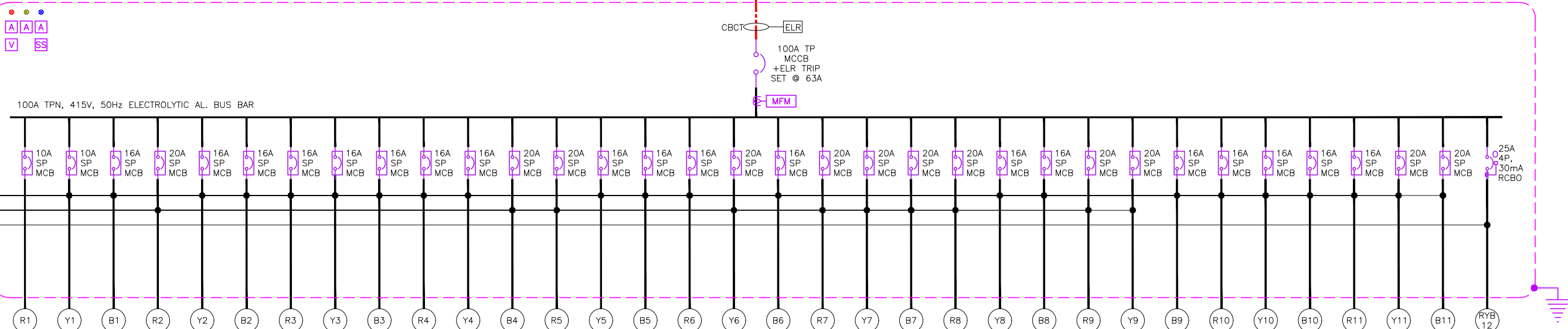
STATUS  
**TENDER**

ORG PROJECT NO DRAWING TYPE NUMBER REV  
**TFS XXXX HVAC M102T00**

ALL DIMENSIONS MUST BE CHECKED ON SITE  
INFORM THE ENGINEER OF ANY DISCREPANCIES PRIOR TO CONSTRUCTION

NOTES:  
IRRESPECTIVE OF THE DRAWING(S), IT IS THE CONTRACTOR'S OBLIGATION AND RESPONSIBILITY THAT SHALL BE EXECUTED AND COMPLETED IN ACCORDANCE TO THE SPECIFICATION, DRAWING(S) AS WELL AS REQUIREMENT. THE SAID DRAWING(S) SHALL NOT RELIEVE CONTRACTOR FROM ITS OBLIGATION UNDER THE CONTRACT AND IN PARTICULAR FROM ITS RESPONSIBILITY IN RELATION TO THE INSTALLATION MATERIALS AND WORKMANSHIP AND WHERE RELEVANT FROM A DUTY TO SEEK APPROVAL FROM THE COMPETENT AUTHORITY.

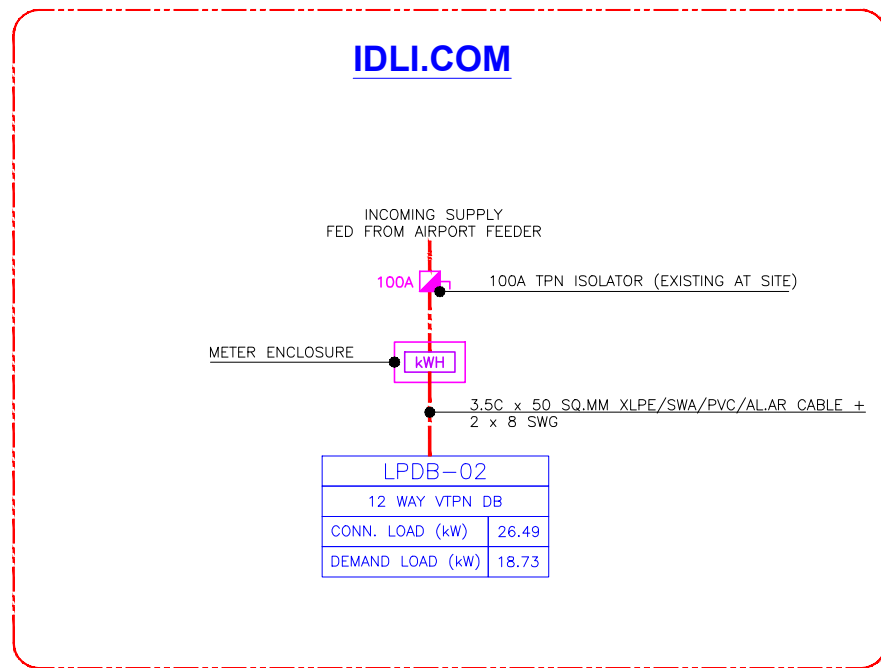
LPDB-02	
12 WAY TPN DB	
CONN. LOAD (kW)	26.49
DEMAND LOAD (kW)	18.73



2 x 2.5 SQ.MM + 1 x 1.5 SQ.MM CU. FRLS/LSZH WIRES  
2 x 4 SQ.MM + 1 x 2.5 SQ.MM CU. FRLS/LSZH WIRES  
4C x 4 SQ.MM XLPE SWA PVC CU. CABLE  
+ 10 SWG

EQUIPMENT DESCRIPTION	CL (kW)
BATTEN LIGHT + PRESSED DOWN LIGHT + PENDANT LIGHT + SIGNAGE	0.23
SPARE	--
1/1 GN PAN COLD BAIN MARIE	0.38
1/1 GN PAN 2 CONTAINERS HOT BAIN MARIE	3.00
TWO DOOR WORK TOP REFRIGERATOR ( COMPRESSOR ON RHS )	0.56
FILTER COFFEE MACHINE - 3 LITRES CAPACITY	0.25
MILK BOILER - 9 LITRES	0.56
WATER BOILER - 18 LITRES	0.56
VISI COOLER	0.35
TWO DOOR WORK TOP REFRIGERATOR ( COMPRESSOR ON RHS )	0.56
2 DOOR VERTICAL CHILLER	0.25
SINGLE BASKET DEEP FAT FRYER - TABLE MODEL	3.30
20A SPARE SOCKET	0.30
INSECT KILLER	0.75
INSECT KILLER	0.75
WATER METER	0.10
WATER BOILER (GEYSER)	2.00
WATER FILTER	0.30
DIGITAL DISPLAY - 2nos	0.40
HOOD - 3 nos	0.30
13A SPARE SOCKET - 3nos	0.30
13A SPARE SOCKET - 3nos	0.30
13A SPARE SOCKET	0.10
16A SPARE SOCKET	0.20
20A SPARE SOCKET	0.30
20A SPARE SOCKET	0.30
SPARE	--
SPARE	--
SPARE	--
SPARE	--
SPARE	--
SPARE	--
SPARE	--
SPARE	--
SPARE	--
COMBI OVEN	9.30

T00	10.12.24	ISSUED FOR TENDER	AK	AS
REV DATE	DESCRIPTION		DSN	CHK



[IDLI.COM](http://IDLI.COM)

LPDB-02	
12 WAY TPN DB	
CONN. LOAD (kW)	26.49
DEMAND LOAD (kW)	18.73

ELECTRICAL SYSTEM LEGEND	
	MCB (MINIATURE CIRCUIT BREAKER) --
	RCBO (RESIDUAL CURRENT CIRCUIT BREAKER WITH OVER CURRENT & SHORT CIRCUIT PROTECTION) --
	MULTI FUNCTION METER - CT TYPE --
	EARTH CONNECTION --
	VOLTMETER --
	VOLTAGE SELECTOR SWITCH --
	AMMETER --
	RYB INDICATOR LAMPS --
	PUSH ON & OFF SWITCH --
	DIRECT ONLINE STARTER (D.O.L.) --
	STAR / DELTA STARTER --
	ELECTRICAL CABLE --

- NOTES:
- CONTRACTOR TO CHECK & CONFIRM ACTUAL SITE CONDITIONS PRIOR TO START DEVELOPING THEIR SHOP DRAWINGS & WORK AT SITE.
  - LAMINATED SINGLE LINE DIAGRAM & LOAD CALCULATION SHEET TO BE PROVIDED INSIDE / NEAR TO EACH ELECTRICAL PANEL / DB'S.
  - ALL CABLES & WIRES MUST BE FRLS/LSZH.
  - GI CONDUITS WITH SUITABLE DIAMETER TO BE USED.
  - POWER FOR HVAC EQUIPMENTS TO BE SHUT DOWN DURING FIRE SITUATION BY INTERFACING WITH FACP.
  - UPS IS LOCATED IN THE SEATING AREA ELECTRICAL ROOM.
- ABBREVIATIONS
- FCU - FAN COIL UNIT
  - ESP - ELECTROSTATIC PRECIPITATOR



PROJECT  
F03-07 DOMINOS, B.GALIYAN, IDLI  
NOIDA INTERNATIONAL  
AIRPORT LIMITED

DRAWING TITLE  
ELECTRICAL SLD  
IDLI.COM

SCALE:1:100 DATE 10.12.24 DESIGN AK A3 SHEET

STATUS  
TENDER

ORG PROJECT NO DRAWING TYPE NUMBER REV  
TFS XXXX ELEC E101 T00

PROJECT / BUILDING NAME :		IDLI.COM																
FED FROM :		AIRPORT DISTRIBUTION FEEDER (EXISTING 100A ISOLATOR)																
DISTRIBUTION BOARD / REF :		LPDB-02										DB AREA REFERENCE :				IDLI.COM - BOH		
MAIN INCOMING CABLE :		3.5C x 50 SQ.MM XLPE/SWA/PVC/ALAR CABLE + 2 x 8 SWG																
DOCUMENT NO. :																		
MAIN INCOMER RATING (A)	CIRCUIT ID	BREAKER TYPE	BREAKER RATING (A)	WIRE SIZE (PH & N) (mm <sup>2</sup> )	WIRE SIZE (EARTH) (mm <sup>2</sup> )	EQUIP. TAG	CIRCUIT NAME / POINT REFERENCE	NUMBER OF POINTS	CONN. LOAD / POINT (W)	DIVERSITY TYPE	DIVERSITY FACTOR	R	Y	B	TOTAL CONN. LOAD (kW)	TOTAL DIVERSITY LOAD (kW)	REMARKS	
100A 4P MCCB + ELR TRIP SET @ 63A	R1	SP MCB	10	2.5	1.5	-	BATTEN LIGHT +RESSED DOWN LIGHT + PENDANT LIGHT+ SIGNAGE	9	226	LTG	1	0.23			0.23	0.23	-	
	Y1	SP MCB	10	-	-	-	SPARE						0.00		0.00	0.00	-	
	B1	SP MCB	16	2.5	1.5	ID - 06	1/1 GN PAN COLD BAIN MARIE	1	375	PWR	0.7			0.38	0.38	0.26	-	
	R2	SP MCB	20	4.0	2.5	ID - 07	1/1 GN PAN 2 CONTAINERS HOT BAIN MARIE	1	3000	PWR	0.7	3.00			3.00	2.10	-	
	Y2	SP MCB	16	2.5	1.5	ID - 12	TWO DOOR WORK TOP REFRIGERATOR ( COMPRESSOR ON RHS )	1	560	PWR	0.7		0.56		0.56	0.39	-	
	B2	SP MCB	16	2.5	1.5	ID - 14	FILTER COFEE MACHINE - 3 LITRES CAPACITY	1	250	PWR	0.7			0.25	0.25	0.18	-	
	R3	SP MCB	16	2.5	1.5	ID - 15	MILK BOILER - 9 LITRES	1	560	PWR	0.7	0.56			0.56	0.39	-	
	Y3	SP MCB	16	2.5	1.5	ID - 16	WATER BOILER - 18 LITRES	1	560	PWR	0.7		0.56		0.56	0.39	-	
	B3	SP MCB	16	2.5	1.5	ID - 17	VISI COOLER	1	345	PWR	1			0.35	0.35	0.35	-	
	R4	SP MCB	16	2.5	1.5	ID - 19	TWO DOOR WORK TOP REFRIGERATOR ( COMPRESSOR ON RHS )	1	560	PWR	1	0.56			0.56	0.56	-	
	Y4	SP MCB	16	2.5	1.5	ID - 18	2 DOOR VERTICAL CHILLER	1	250	PWR	1		0.25		0.25	0.25	-	
	B4	SP MCB	20	4.0	2.5	ID - 21	SINGLE BASKET DEEP FAT FRYER - TABLE MODEL	1	3300	PWR	0.7			3.30	3.30	2.31	-	
	R5	SP MCB	20	4.0	2.5	-	20A SPARE SOCKET	1	300	PWR	0.5	0.30			0.30	0.15	-	
	Y5	SP MCB	16	2.5	1.5	EXT3	INSECT KILLER	1	750	PWR	0.7		0.75		0.75	0.53	-	
	B5	SP MCB	16	2.5	1.5	EXT3	INSECT KILLER	1	750	PWR	0.7			0.75	0.75	0.53	-	
	R6	SP MCB	16	2.5	1.5	-	WATER METER	1	100	PWR	0.7	0.10			0.10	0.07	-	
	Y6	SP MCB	20	4.0	2.5	ID - 21	WATER BOILER (GEYSER)	1	2000	PWR	0.7		2.00		2.00	1.40	-	
	B6	SP MCB	16	2.5	1.5	-	WATER FILTER	1	300	PWR	0.7			0.30	0.30	0.21	-	
	R7	SP MCB	20	4.0	2.5	-	DIGITAL DISPLAY	2	200	PWR	1	0.40			0.40	0.40	RADIAL CKT	
	Y7	SP MCB	20	4.0	2.5	-	HOOD	3	300	PWR	0.7		0.90		0.90	0.63	RADIAL CKT	
	B7	SP MCB	20	4.0	2.5	-	13A SPARE SOCKET	3	100	PWR	0.7			0.30	0.30	0.21	RADIAL CKT	
	R8	SP MCB	20	4.0	2.5	-	13A SPARE SOCKET	3	100	PWR	0.5	0.30			0.30	0.15	RADIAL CKT	
	Y8	SP MCB	16	2.5	1.5	-	13A SPARE SOCKET	1	300	PWR	0.5		0.30		0.30	0.15	-	
	B8	SP MCB	16	2.5	1.5	-	16A SPARE SOCKET	1	200	PWR	0.5			0.20	0.20	0.10	-	
R9	SP MCB	20	4.0	2.5	-	20A SPARE SOCKET	1	300	PWR	0.5	0.30			0.30	0.15	-		
Y9	SP MCB	20	4.0	2.5	-	20A SPARE SOCKET	1	300	PWR	0.5		0.30		0.30	0.15	-		
B9	SP MCB	16	-	-	-	SPARE							0.00	0.00	0.00	-		
R10	SP MCB	16	-	-	-	SPARE					0.00			0.00	0.00	-		
Y10	SP MCB	16	-	-	-	SPARE						0.00		0.00	0.00	-		
B10	SP MCB	16	-	-	-	SPARE							0.00	0.00	0.00	-		
R11	SP MCB	16	-	-	-	SPARE					0.00			0.00	0.00	-		
Y11	SP MCB	20	-	-	-	SPARE						0.00		0.00	0.00	-		
B11	SP MCB	20	-	-	-	SPARE							0.00	0.00	0.00	-		
RYB12	4P RCBO	25	4.0	10 SWG	ID - 10	COMBI OVEN	1	9300	PWR	0.7	3.10	3.10	3.10	9.30	6.51	-		
												LPDB-02	8.85	8.72	8.92	26.49	18.73	
													TCL - R	TCL - Y	TCL - B	TCL	TDL	

ABBREVIATIONS : PWR - POWER, LTG - LIGHTING, UPS - UNINTERRUPTIBLE POWER SUPPLY, A - AMPS, W - WATTS, kW - KILOWATT, 1R - ONE RUN, 4C - FOUR CORE, 2C - TWO CORE, CU. - COPPER, ECC - EARTH CONTINUITY CONDUCTOR, CONN. - CONNECTED

TOTAL CONNECTED LOAD	26.49	LPDB-02	TCL (kW)
TOTAL CONNECTED LOAD	29.43	LPDB-02	TCL (kVA)
TOTAL DEMAND LOAD	18.73	LPDB-02	TDL (kW)
TOTAL DEMAND LOAD	20.82	LPDB-02	TDL (kVA)
AVERAGE DIVERSITY FACTOR	71%	LPDB-02	%

ALL DIMENSIONS MUST BE CHECKED ON SITE  
INFORM THE ENGINEER OF ANY DISCREPANCIES PRIOR TO CONSTRUCTION

NOTES:  
IRRESPECTIVE OF THE DRAWING(S), IT IS THE CONTRACTOR'S OBLIGATION AND RESPONSIBILITY THAT SHALL BE EXECUTED AND COMPLETED IN ACCORDANCE TO THE SPECIFICATION, DRAWING(S) AS WELL AS REQUIREMENT. THE SAID DRAWING(S) SHALL NOT RELIEVE CONTRACTOR FROM ANY OBLIGATION UNDER THE CONTRACT AND IN PARTICULAR FROM ITS RESPONSIBILITY IN RELATION TO THE INSTALLATION MATERIALS AND WORKMANSHIP AND WHERE RELEVANT FROM A DUTY TO SEEK APPROVAL FROM THE COMPETENT AUTHORITY.

T00 10.12.24 ISSUED FOR TENDER AK AS  
REV DATE DESCRIPTION DSN CHK



PROJECT  
F03-07 DOMINOS, B.GALIYAN, IDLI  
NOIDA INTERNATIONAL  
AIRPORT LIMITED

DRAWING TITLE  
LOAD CALCULATION SHEET  
IDLI.COM  
LPDB-02

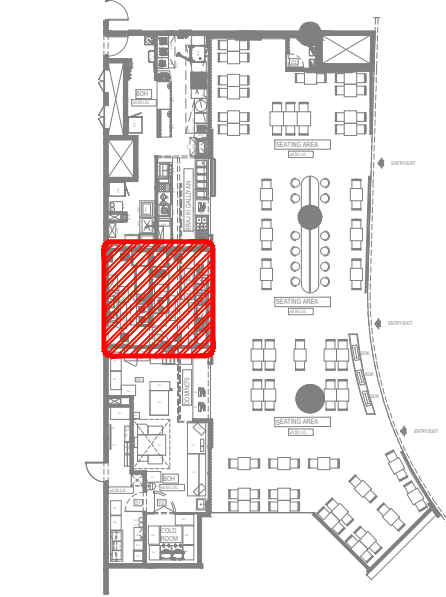
SCALE NTS DATE 10.12.24 DESIGN AK A3 SHEET

STATUS  
TENDER

ORG PROJECT NO DRAWING TYPE NUMBER REV  
TFS XXXX ELEC E201 T00

ALL DIMENSIONS MUST BE CHECKED ON SITE  
INFORM THE ENGINEER OF ANY DISCREPANCIES PRIOR TO CONSTRUCTION

NOTES:  
IRRESPECTIVE OF THE DRAWING(S), IT IS THE CONTRACTOR'S OBLIGATION AND RESPONSIBILITY THAT SHALL BE EXECUTED AND COMPLETED IN ACCORDANCE TO THE SPECIFICATION, DRAWING(S) AS WELL AS REQUIREMENT. THE SAID DRAWING(S) SHALL NOT RELIEVE CONTRACTOR FROM ITS RESPONSIBILITY IN RELATION TO THE INSTALLATION MATERIALS AND WORKMANSHIP AND WHERE RELEVANT FROM A DUTY TO SEEK APPROVAL FROM THE COMPETENT AUTHORITY.

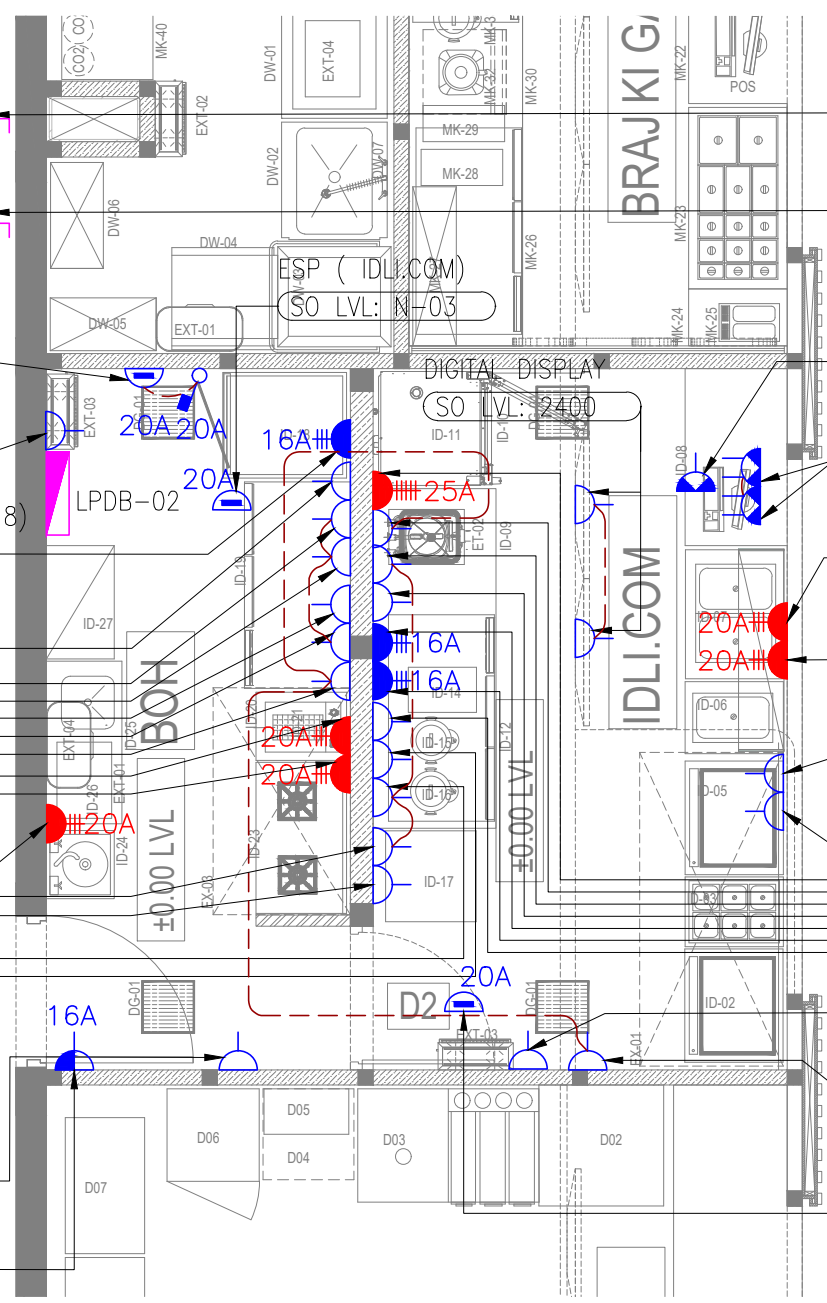


02 KEY PLAN  
NTS



SUPPLY AND INSTALLATION OF KITCHEN FRESH AIR FAN AND KITCHEN EXTRACT FAN BY GMR SCOPE. LOCATION IS INDICATIVE ONLY.

- SPARE SOCKET (SO LVL: 1200)
- SPARE SOCKET (SO LVL: 1200)
- REFRIGERATOR (ID-19) (SO LVL: 1200)
- SPARE SOCKET (SO LVL: 1200)
- HOOD (SO LVL: 1800)
- SPARE SOCKET (SO LVL: 1200)
- DEEP FAT FRYER (ID-21) (SO LVL: 1200)
- SPARE SOCKET (SO LVL: 1500)
- VISI COOLER (ID-17) (SO LVL: 1500)
- GEYSER (SO LVL: 2000)
- INSECT KILLER (SO LVL: 1900)
- VERTICAL CHILLER (ID-18) (SO LVL: 2250)
- RO FILTER (SO LVL: 1800)
- SPARE SOCKET (SO LVL: 1200)
- SPARE SOCKET (SO LVL: 1200)
- WATER BOILER (ID-16) (SO LVL: 1200)
- WATER METER (SO LVL: 1800)
- AIR CURTAIN (SO LVL: 2200)



- KITCHEN EXHAUST AIR FAN (IDLI.COM) (SO LVL: N-03)
- FRESH AIR FAN (IDLI.COM) (SO LVL: N-03)
- ESP (IDLI.COM) (SO LVL: N-03)
- WiFi (SO LVL: N-01)
- POS (SO LVL: 450)
- HOT BAIN MARIE (ID-06) (SO LVL: 450)
- SPARE SOCKET (SO LVL: 450)
- COLD BAIN MARIE (ID-06) (SO LVL: 450)
- SPARE SOCKET (SO LVL: 450)
- COMBI OVEN (ID-10) (SO LVL: 650)
- HOOD (SO LVL: 1800)
- SPARE SOCKET (SO LVL: 450)
- REFRIGERATOR (ID-12) (SO LVL: 450)
- SPARE SOCKET (SO LVL: 1200)
- FILTER COFFEE MACHINE (ID-14) (SO LVL: 1200)
- MILK BOILER (ID-15) (SO LVL: 1200)
- INSECT KILLER (SO LVL: 1900)
- HOOD (SO LVL: 1800)
- FCU (IDLI.COM) (SO LVL: N-03)

01 POWER LAYOUT  
E301 1:50

**NOTES**

- ALL DIMENSIONS & LEVEL ARE IN "MM" OR OTHERWISE MENTIONED.
- SOCKETS PROVIDED NEAR WET AREAS SHALL BE AT LEAST 1.2 MTR AWAY FROM WATER SOURCE AND IP66 RATED.
- A DISTANCE OF MINIMUM 300MM TO BE MAINTAINED BETWEEN POWER AND COMMUNICATION CABLE.
- ALL CIRCUITS IN DB ARE TO BE TAGGED. MCB/MCCB IS TO BE LABELED AND THE SCHEMATIC IS TO BE UPDATED ACCORDING TO WHAT IS DISPLAYED IN DB.
- SOCKET ELEVATIONS SHOWN IN THE DRAWING IS DESIGN INDICATIVE. THE CONTRACTOR NEEDS TO FIELD VERIFY AT THE SITE AND INTEGRATE IT TO MATCH WITH THE ID DESIGN FOR THE FINAL LOCATION & ELEVATIONS.
- SHUTTER TYPE SWITCH SOCKET OUTLET ON SUITABLE MS BOX SHALL BE USED WITH PROPER EARTHING.
- ALL ELECTRICAL EQUIPMENT SHALL BE PROPER EARTHED AND CONNECTED TO MAIN EARTHING WITH SUITABLY SIZED EARTHING CONDUCTOR.
- ALL SWITCH / SOCKET / DATA OUTLET PLATE COLOUR / FINISH TO BE MATCH WITH ARCHITECTURAL LAYOUT & ARCHITECT APPROVAL TO BE TAKEN PRIOR TO PRODUCT PROCUREMENT.
- IDF RACK & UPS ARE LOCATED IN THE SEATING AREA ELECTRICAL ROOM.
- ALL MCCB/ISOLATOR PANEL SHALL BE MADE ACCESSIBLE AT ALL TIME.
- N-01: SOCKET TO BE FIXED WITH ON CEILING.
- N-02: SOCKET FIXING TO BE COORDINATE WITH FURNITURE
- N-03: SOCKET TO BE FIXED WITH ABOVE CEILING.

ELECTRICAL SYSTEM LEGEND		
SYMBOL	DESCRIPTION	QTY
	13A DUAL SWITCHED SOCKET OUTLET (UPS POWER)	02
	13A SINGLE SWITCHED SOCKET OUTLET (UPS POWER)	01
	13A SINGLE SWITCHED SOCKET OUTLET	22
	16A SINGLE SWITCHED SOCKET OUTLET	01
	SINGLE PHASE INDUSTRIAL SWITCHED SOCKET (3 PIN) (WALL MOUNTED)	03
	SINGLE PHASE INDUSTRIAL SWITCHED SOCKET (3 PIN) (WALL MOUNTED)	05
	UNSWITCHED FUSED CONNECTION OUTLET WITH-OUT NEON INDICATOR	03
	THREE PHASE INDUSTRIAL SWITCHED SOCKET (5 PIN) (WALL MOUNTED)	01
	THREE PHASE ISOLATOR	02
	DOUBLE POLE SWITCH WITH NEON INDICATOR	03
	DISTRIBUTION BOARD (THREE PHASE)	01
	ELECTRICAL POWER CIRCUIT	--

T00 10.12.24 ISSUED FOR TENDER AK AS  
REV DATE DESCRIPTION DSN CHK



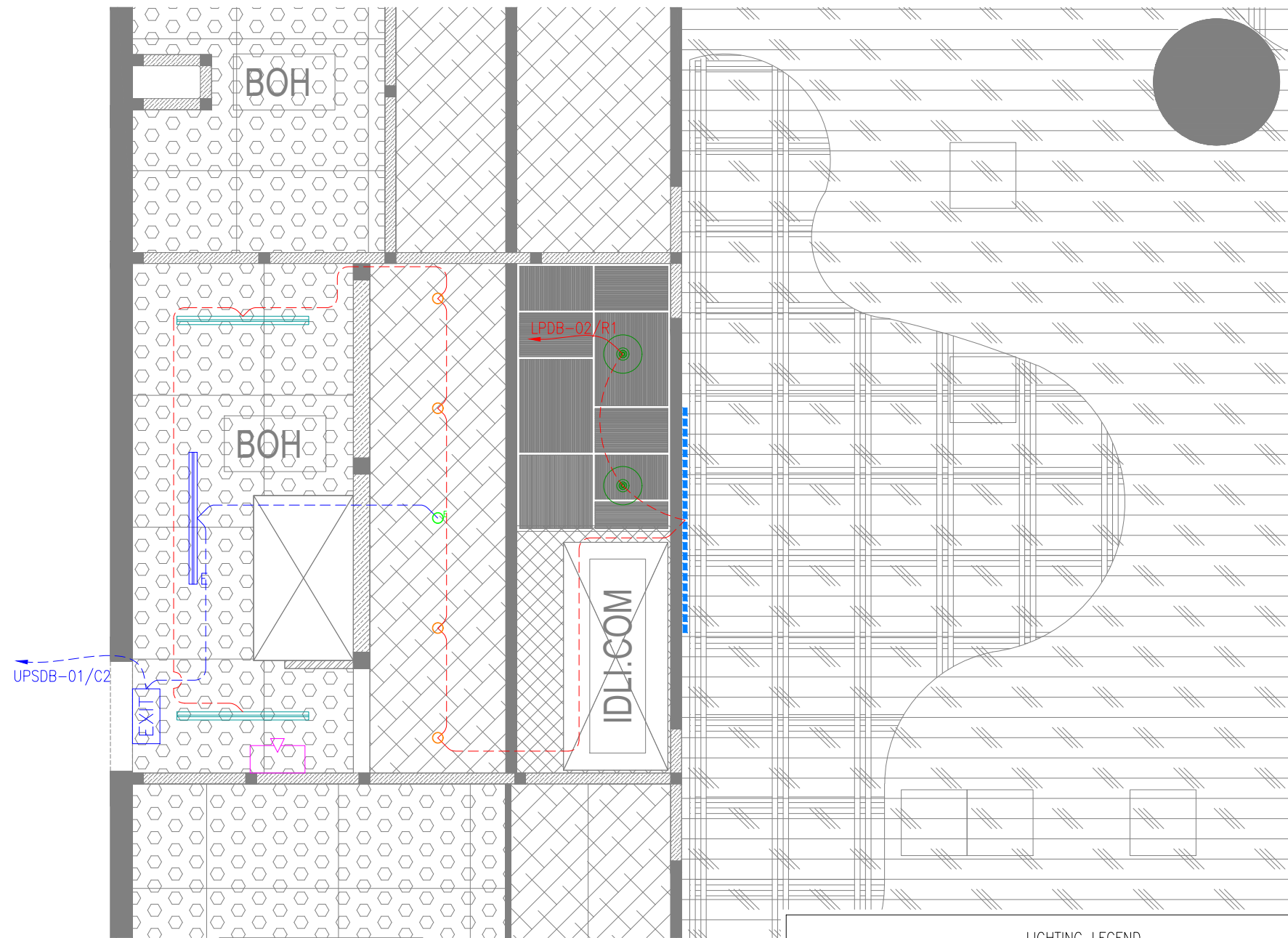
PROJECT  
F03-07 DOMINOS, B.GALIYAN, IDLI  
NOIDA INTERNATIONAL  
AIRPORT LIMITED

DRAWING TITLE  
POWER LAYOUT  
IDLI.COM

SCALE 1:50 DATE 10.12.24 DESIGN AK A3 SHEET

STATUS  
TENDER

ORG PROJECT NO DRAWING TYPE NUMBER REV  
TFS XXXX ELEC E301 T00



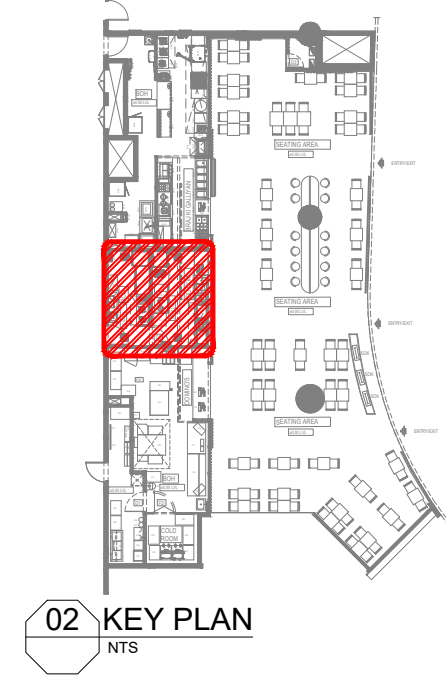
- NOTES**
- ALL DIMENSIONS & LEVEL ARE IN "MM" OR OTHERWISE MENTIONED.
  - FINAL LOCATION OF LIGHT FIXTURES TO BE FOLLOWED AS PER ARCHITECT LAYOUT.
  - EXISTING CEILING LIGHT TO BE RETAINED AND RELOCATED AS PER SITE CONDITIONS.
  - REFER ARCHITECTURAL DETAIL LAYOUT FOR DECORATIVE TYPE LIGHT FIXTURES.
  - ALL CONDUITING TO BE EMT OR AS PER AIRPORT NORMS.
  - ALL SWITCH / SOCKET / DATA OUTLET PLATE COLOUR / FINISH TO BE MATCH WITH ARCHITECTURAL LAYOUT & ARCHITECT APPROVAL TO BE TAKEN PRIOR TO PRODUCT PROCUREMENT.
  - FINAL LIGHTING LOCATION, COORDINATE WITH ARCHITECT DRAWING.

LIGHTING LEGEND				
SYMBOL	DESCRIPTION	CODE	WATTS	QTY
	PENDANT LIGHT-02	LT2	10	02
	RECESSED DOWN LIGHT	--	11	04
	EMERGENCY RECESSED DOWN LIGHT	--	11	01
	BATTEN LIGHT	LT4	31	02
	EMERGENCY BATTEN LIGHT	LT4	31	01
	EXIT LIGHT WITH BATTERY BACKUP (WALL / CEILING MOUNTED)	--	08	01
	INDICATIVE SIGNAGE	--	100	01
	LIGHTING CONTROL SWITCH POINT			01
	LIGHTING NORMAL CIRCUIT			--
	LIGHTING EMERGENCY CIRCUIT			--

**01 LIGHTING LAYOUT**  
E401 1:50

ALL DIMENSIONS MUST BE CHECKED ON SITE  
INFORM THE ENGINEER OF ANY DISCREPANCIES PRIOR TO CONSTRUCTION

NOTES:  
IRRESPECTIVE OF THE DRAWING(S), IT IS THE CONTRACTOR'S OBLIGATION AND RESPONSIBILITY THAT SHALL BE EXECUTED AND COMPLETED IN ACCORDANCE TO THE SPECIFICATION, DRAWING(S) AS WELL AS REQUIREMENT. THE SAID DRAWING(S) SHALL NOT RELIEVE CONTRACTOR FROM ITS OBLIGATION UNDER THE CONTRACT AND IN PARTICULAR FROM ITS RESPONSIBILITY IN RELATION TO THE INSTALLATION MATERIALS AND WORKMANSHIP AND WHERE RELEVANT FROM A DUTY TO SEEK APPROVAL FROM THE COMPETENT AUTHORITY.



T00	10.12.24	ISSUED FOR TENDER	TT	AS
REV	DATE	DESCRIPTION	DSN	CHK



PROJECT  
**F03-07 DOMINOS, B.GALIYAN, IDLI  
NOIDA INTERNATIONAL  
AIRPORT LIMITED**

DRAWING TITLE  
**LIGHTING LAYOUT  
IDLI.COM**

SCALE 1:50    DATE 10.12.24    DESIGN TT    A3 SHEET

STATUS  
**TENDER**

ORG	PROJECT NO	DRAWING TYPE	NUMBER	REV
TFS	XXXX	ELEC	E401	T00

ALL DIMENSIONS MUST BE CHECKED ON SITE  
INFORM THE ENGINEER OF ANY DISCREPANCIES PRIOR TO CONSTRUCTION

NOTES:  
IRRESPECTIVE OF THE DRAWING(S), IT IS THE CONTRACTOR'S OBLIGATION AND RESPONSIBILITY THAT SHALL BE EXECUTED AND COMPLETED IN ACCORDANCE TO THE SPECIFICATION, DRAWING(S) AS WELL AS REQUIREMENT. THE SAID DRAWING(S) SHALL NOT RELIEVE CONTRACTOR FROM ITS OBLIGATION UNDER THE CONTRACT AND IN PARTICULAR FROM ITS RESPONSIBILITY IN RELATION TO THE INSTALLATION MATERIALS AND WORKMANSHIP AND WHERE RELEVANT FROM A DUTY TO SEEK APPROVAL FROM THE COMPETENT AUTHORITY.

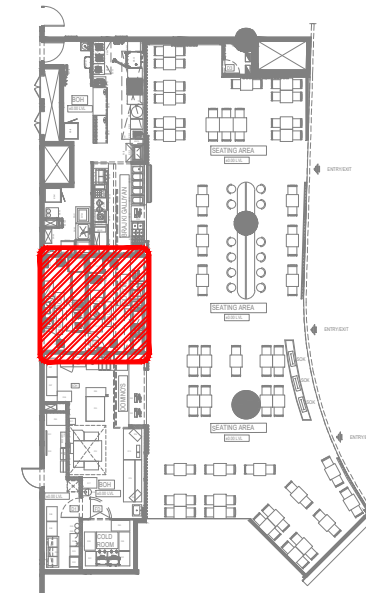
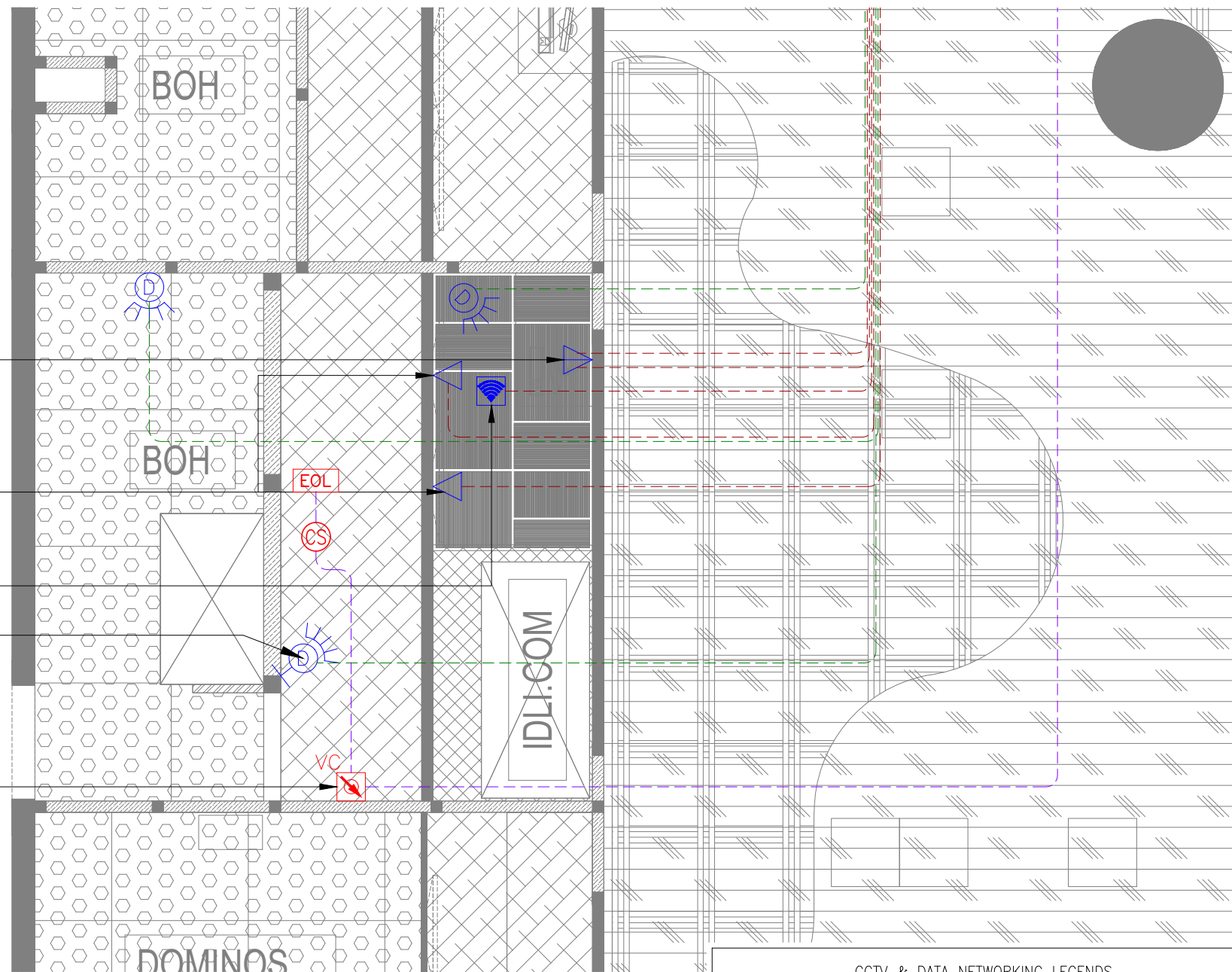
WALL CAMERA  
SO LVL: 2100

POS  
SO LVL: 450

DIGITAL DISPLAY  
SO LVL: N-01

WIFI  
SO LVL: N-02

VOLUME CONTROLLER  
SO LVL: 1300



02 KEY PLAN  
NTS

- NOTES**
- ALL DIMENSIONS & LEVEL ARE IN "MM" OR OTHERWISE MENTIONED.
  - ALL SWITCH / SOCKET / DATA OUTLET PLATE COLOR / FINISH TO BE MATCH WITH ARCHITECTURAL LAYOUT & ARCHITECT APPROVAL TO BE TAKEN PRIOR TO PRODUCT PROCUREMENT.
  - THE CABLE ROUTING SHOWN IN THE DIAGRAM IS INDICATIVE SCHEMATIC ONLY. ACTUAL ROUTING IS TO BE DONE AS PER SITE CONDITION AND ALSO COORDINATE WITH OTHER SERVICES.
  - ONLY FIXED TYPE CAMERA SHALL BE USED. NO PAN / TILT TYPE CAMERA IS ALLOWED.
  - ONLY CABLING & CONTAINMENT (POWER & DATA) PROVISION FOR CCTV CAMERAS & WIFI ROUTER POINTS TO BE PROVIDED. CCTV CAMERA & WIFI ROUTER ARE SCOPE OF CLIENT.
  - ALL CONDUITING TO BE EMT OR AS PER AIRPORT NORMS.
  - PA SYSTEM MUST BE INTEGRATE WITH AIRPORT ANNOUNCEMENT SYSTEM.
  - IDF RACK & UPS ARE LOCATED IN THE SEATING AREA ELECTRICAL ROOM.
  - N-01: SOCKET OUTLETS TO BE FIXED WITH TV INSTALLATION FRAME / ROD.
  - N-02: SOCKET TO BE FIXED ON CEILING.

CCTV & DATA NETWORKING LEGENDS		
SYMBOL	DESCRIPTION	QTY
	DOME CCTV CAMERA - IP67 CEILING MOUNT	02
	DOME CCTV CAMERA - IP67 WALL MOUNT	01
	SINGLE RJ45 DATA OUTLET	02
	DUAL RJ45 DATA OUTLET	01
	WIFI ROUTER DATA OUTLET (RJ45)	01
	INTERMEDIATE DISTRIBUTION FRAME (DATA NETWORK)	--
	6W CEILING SPEAKER	01
	END OF LINE RESISTOR	01
	VOLUME CONTROLLER	01
	CCTV CABLE	--
	DATA SYSTEM CABLE	--
	PUBLIC ADDRESS SYSTEM CABLE	--

T00 10.12.24 ISSUED FOR TENDER TT AS  
REV DATE DESCRIPTION DSN CHK



PROJECT  
F03-07 DOMINOS, B.GALIYAN, IDLI  
NOIDA INTERNATIONAL  
AIRPORT LIMITED

DRAWING TITLE  
CCTV, DATA & PA LAYOUT  
IDLI.COM

SCALE 1:50 DATE 10.12.24 DESIGN TT A3 SHEET

STATUS  
TENDER

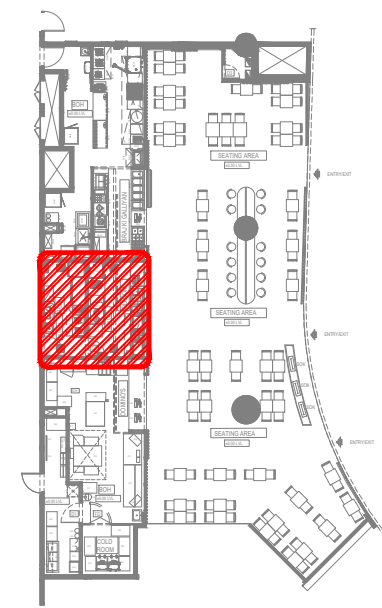
ORG PROJECT NO DRAWING TYPE NUMBER REV  
TFS XXXX ELEC E501 T00

01 CCTV, DATA & PA LAYOUT  
E501 1:50

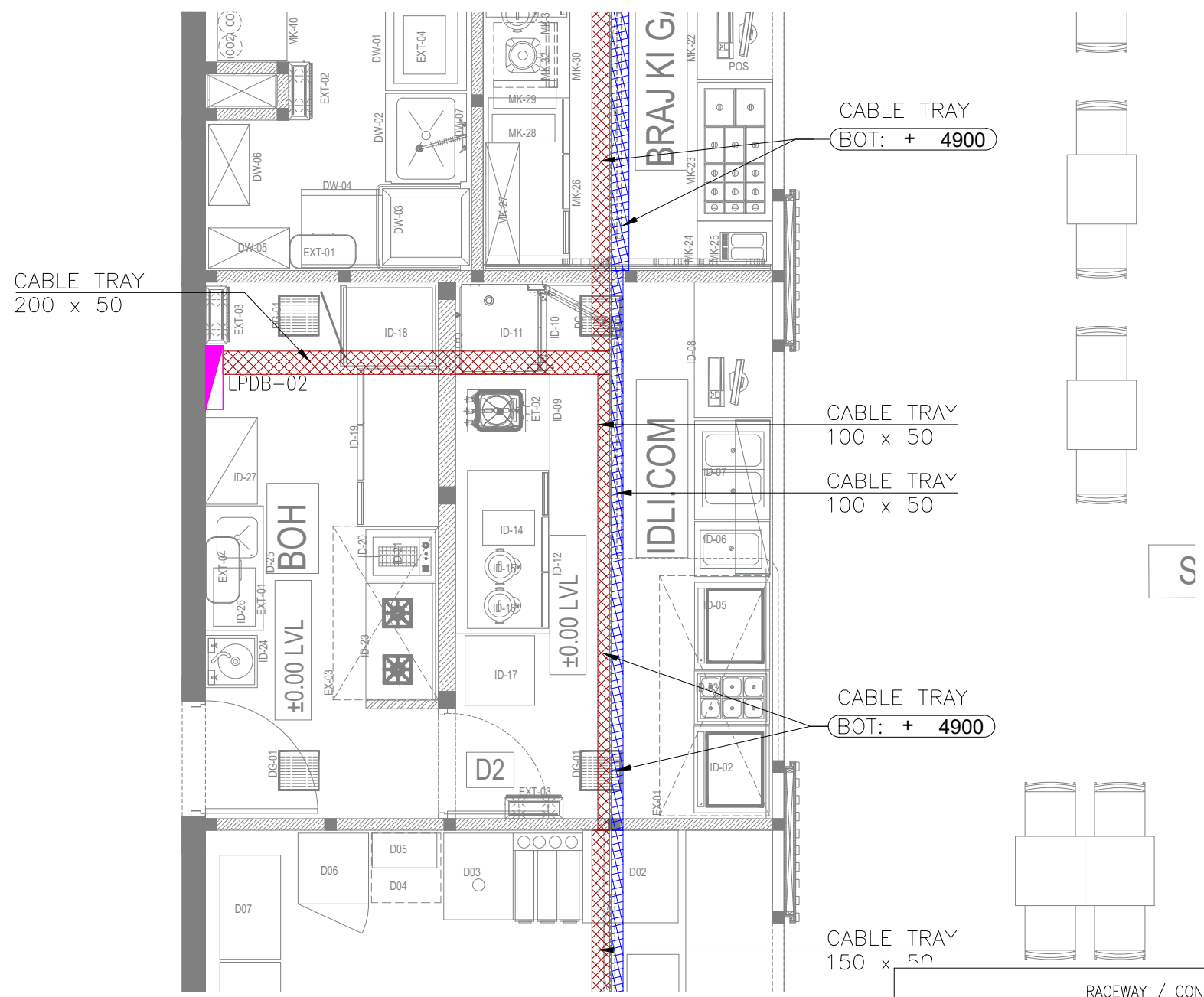


ALL DIMENSIONS MUST BE CHECKED ON SITE  
INFORM THE ENGINEER OF ANY DISCREPANCIES PRIOR TO CONSTRUCTION

NOTES:  
IRRESPECTIVE OF THE DRAWING(S), IT IS THE CONTRACTOR'S OBLIGATION AND RESPONSIBILITY THAT SHALL BE EXECUTED AND COMPLETED IN ACCORDANCE TO THE SPECIFICATION, DRAWING(S) AS WELL AS REQUIREMENT. THE SAID DRAWING(S) SHALL NOT RELIEVE CONTRACTOR FROM ITS OBLIGATION UNDER THE CONTRACT AND IN PARTICULAR FROM ITS RESPONSIBILITY IN RELATION TO THE INSTALLATION MATERIALS AND WORKMANSHIP AND WHERE RELEVANT FROM A DUTY TO SEEK APPROVAL FROM THE COMPETENT AUTHORITY.



02 KEY PLAN  
NTS



- NOTES**
- ALL DIMENSIONS & LEVEL ARE IN "MM" OR OTHERWISE MENTIONED.
  - EMT CONDUITS OF SUITABLE DIAMETER TO BE USED FOR ALL CCTV CABLING BETWEEN CAMERA TO DVR.
  - HEAVY DUTY PVC CONDUITS OF SUITABLE DIAMETER TO BE USED FOR ALL LIGHTING & POWER CABLING BETWEEN LIGHT / POWER POINT TO DB.
  - CONTRACTOR TO FOLLOW AIRPORT MEP GUIDELINES FOR MATERIAL MASE & SPECIFICATION.
  - CABLE TRAY & TRUNKING ROUTES ARE INDICATIVE ONLY, TO BE COORDINATED WITH OTHER SERVICES.
  - THE CONTRACTOR IS EXPECTED TO DEVELOP THE ACTUAL ROUTING DETAILS OF THESE AT SITE BASED ON SITE CONDITION. IT IS IMPORTANT TO ENSURE THAT THESE SERVICES ARE NOT VISIBLE TO CUSTOMERS, CAN BE ACCESSED IN FUTURE FOR MAINTENANCE AND ARE NOT DETRIMENTAL TO THE UNIT.
  - IDF RACK & UPS ARE LOCATED IN THE SEATING AREA ELECTRICAL ROOM.

RACEWAY / CONTAINMENT LEGEND		
SYMBOL	DESCRIPTION	QTY
	CABLE TRAY (LIGHTING & POWER)	--
	CABLE TRAY(ELV)	--
	EMT CONDUIT THROUGH FLOOR SCREED FOR ELECTRICAL	--
	EMT CONDUIT THROUGH FLOOR SCREED FOR ELV	--
	LIGHTING CONTROL SWITCH POINT	--
	CONDUIT DROP	02
	FLOOR JUNCTION BOX	--
	DBs - DISTRIBUTION BOARD	05
	SUB MAIN DISTRIBUTION BOARD (SMDBs)	01
	RUBBER MAT ON FLOOR	01

01 CONTAINMENT LAYOUT  
E601 1:50

T00 10.12.24 ISSUED FOR TENDER AK AS  
REV DATE DESCRIPTION DSN CHK



PROJECT  
F03-07 DOMINOS, B.GALIYAN, IDLI  
NOIDA INTERNATIONAL  
AIRPORT LIMITED

DRAWING TITLE  
CONTAINMENT LAYOUT  
IDLI.COM

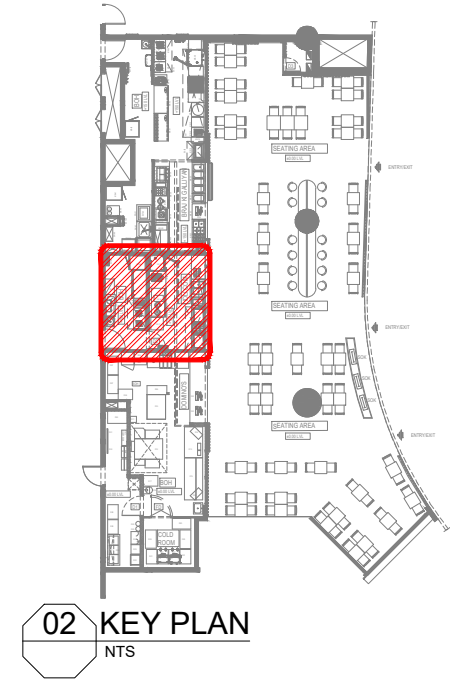
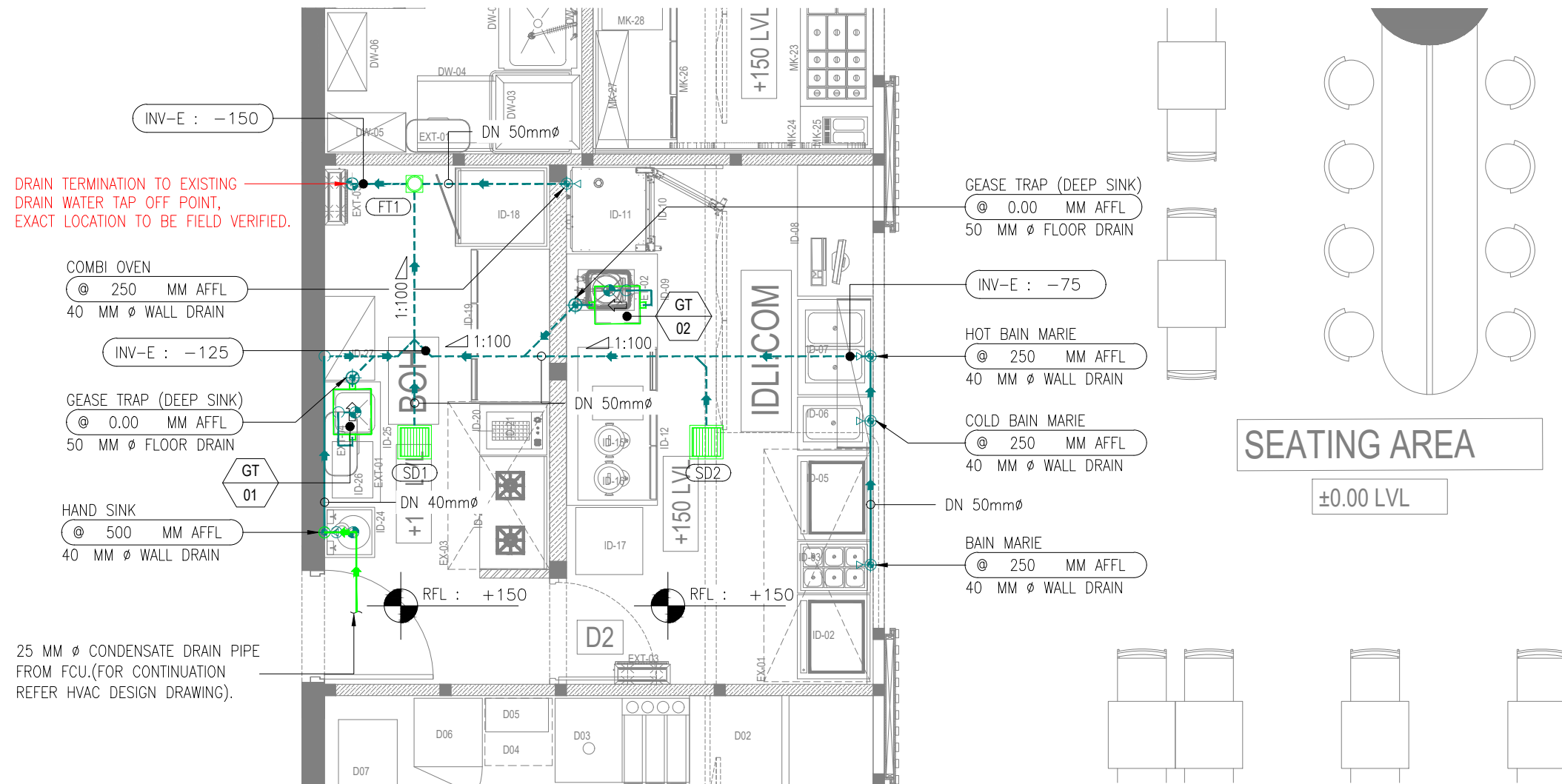
SCALE 1:50 DATE 10.12.24 DESIGN AK A3 SHEET

STATUS  
TENDER

ORG PROJECT NO DRAWING TYPE NUMBER REV  
TFS XXXX ELEC E601 T00

ALL DIMENSIONS MUST BE CHECKED ON SITE  
INFORM THE ENGINEER OF ANY DISCREPANCIES PRIOR TO CONSTRUCTION

NOTES:  
IRRESPECTIVE OF THE DRAWING(S), IT IS THE CONTRACTOR'S OBLIGATION AND RESPONSIBILITY THAT SHALL BE EXECUTED AND COMPLETED IN ACCORDANCE TO THE SPECIFICATION, DRAWING(S) AS WELL AS REQUIREMENT. THE SAID DRAWING(S) SHALL NOT RELIEVE CONTRACTOR FROM ITS OBLIGATION UNDER THE CONTRACT AND IN PARTICULAR FROM ITS RESPONSIBILITY IN RELATION TO THE INSTALLATION MATERIALS AND WORKMANSHIP AND WHERE RELEVANT FROM A DUTY TO SEEK APPROVAL FROM THE COMPETENT AUTHORITY.



02 KEY PLAN  
NTS

DRAIN TERMINATION TO EXISTING DRAIN WATER TAP OFF POINT, EXACT LOCATION TO BE FIELD VERIFIED.

- COMBI OVEN @ 250 MM AFFL 40 MM Ø WALL DRAIN
- INV-E : -125
- GEASE TRAP (DEEP SINK) @ 0.00 MM AFFL 50 MM Ø FLOOR DRAIN
- GT 01
- HAND SINK @ 500 MM AFFL 40 MM Ø WALL DRAIN

25 MM Ø CONDENSATE DRAIN PIPE FROM FCU.(FOR CONTINUATION REFER HVAC DESIGN DRAWING).

- GEASE TRAP (DEEP SINK) @ 0.00 MM AFFL 50 MM Ø FLOOR DRAIN
- INV-E : -75
- HOT BAIN MARIE @ 250 MM AFFL 40 MM Ø WALL DRAIN
- COLD BAIN MARIE @ 250 MM AFFL 40 MM Ø WALL DRAIN
- BAIN MARIE @ 250 MM AFFL 40 MM Ø WALL DRAIN

SEATING AREA  
±0.00 LVL

WATER SUPPLY PIPING LEGEND	
SYMBOL	DESCRIPTION
	WASTE WATER PIPE
	CONDENSATE DRAIN PIPE
	WASTE VENT PIPE
	PIPE RUNS BELOW CEILING
	PIPE RUNS THROUGH WALL
	PIPE RUNS BELOW RAISED FLOOR
	ELBOW DOWN
	ELBOW UP
	TOP CONNECTION
	BOTTOM CONNECTION
	FLOW DIRECTION

- NOTES:
- PIPE WORKS AND FITTINGS SHALL COMPLY WITH THE DRAWINGS AND LOCAL AUTHORITIES REQUIREMENTS.
  - ALL PIPES SHALL BE SUITABLY SUPPORTED AND PROVIDED WITH CLEANOUTS FOR RODDING WERE EVER NECESSARY.
  - ALL PLUMBING FIXTURES & DRAIN SHOULD HAVE SUITABLE WATER TRAPS TO PREVENT THE ESCAPE OF FOUL AIR INTO THE BUILDING.
  - ANY GREASE GENERATING FIXTURE SHALL BE CONNECTED TO UNDER COUNTER GREASE TRAP/ INTERCEPTOR BEFORE CONNECTING TO BASE BUILD STUB OUT.
  - DRAIN SLOPE MAY VARIES DEPENDING UPON SITE CONDITION AND TO MATCH WITH THE FLOOR RISE PROVIDED BY THE ARCHITECT.
  - ALL THE DRAINAGE PIPE WORK SHALL BE OF UPVC TYPE-A.
  - ALL PROPOSED DRAIN TAP-OFF POINT ELEVATIONS ARE MARKED FROM RAISED FLOOR LVL.
  - STRAINERS SHALL BE PROVIDED AT ALL THE DRAIN POINTS.
  - PLEASE NOTE PIPE WORK AND EQUIPMENT MAY BE SHOWN DISPLACED FOR THE CLARITY OF DRAWING.
  - A MIN 1:100 SLOPE SHALL BE MAINTAINED FOR EVERY DRAIN PIPE RUNS THROUGH WALL AND BELOW RAISED FLOOR UPTO THE DRAINAGE TAP-OFF POINT.

DRAINAGE ABBREVIATIONS			
GT	GREASE TRAP	DN	NOMINAL DIA
FT	FLOOR TRAP	AAV	AIR ADMITTANCE VALVE
SD	SCUPPER DRAIN	FD	FLOOR DRAIN

DRAINAGE EQUIPMENT SCHEDULE					
SL.NO	EQUIPMENT NAME	EQUIPMENT TAG	GREASE CAPACITY (KG)	CONNECTION SIZE-(DN) (MM)	MIN. REQUIRED FLOW RATE (LPM)
1	GREASE TRAP	GT-01	7	50	30
2	GREASE TRAP	GT-02	7	50	30

PLUMBING DRAINAGE SYSTEM LEGEND	
SYMBOL	DESCRIPTION
	WASTE WATER PIPE
	FLOOR DRAIN TERMINATION PIPE UP-STAND AFFL - FDP
	WASTE DRAIN TERMINATION ON WALL - WD
	P - TRAP
	FLOOR TRAP - FT
	SCUPPER DRAIN
	GREASE TRAP / GREASE INTERCEPTOR
	EXISTING WASTE WATER PIPE TAP-OFF POINT
	AIR ADMITTANCE VALVE - AAV
	FLOOR RISE TAG (RISE FROM FLOOR SLAB TO FFL)
	PIPE INVERT ELEVATION (DROP FROM FINISHED FL)

T00 10.12.24 ISSUED FOR TENDER HS RR  
REV DATE DESCRIPTION DSN CHK



PROJECT  
F03-07 DOMINOS, B.GALIYAN, IDLI  
NOIDA INTERNATIONAL  
AIRPORT LIMITED

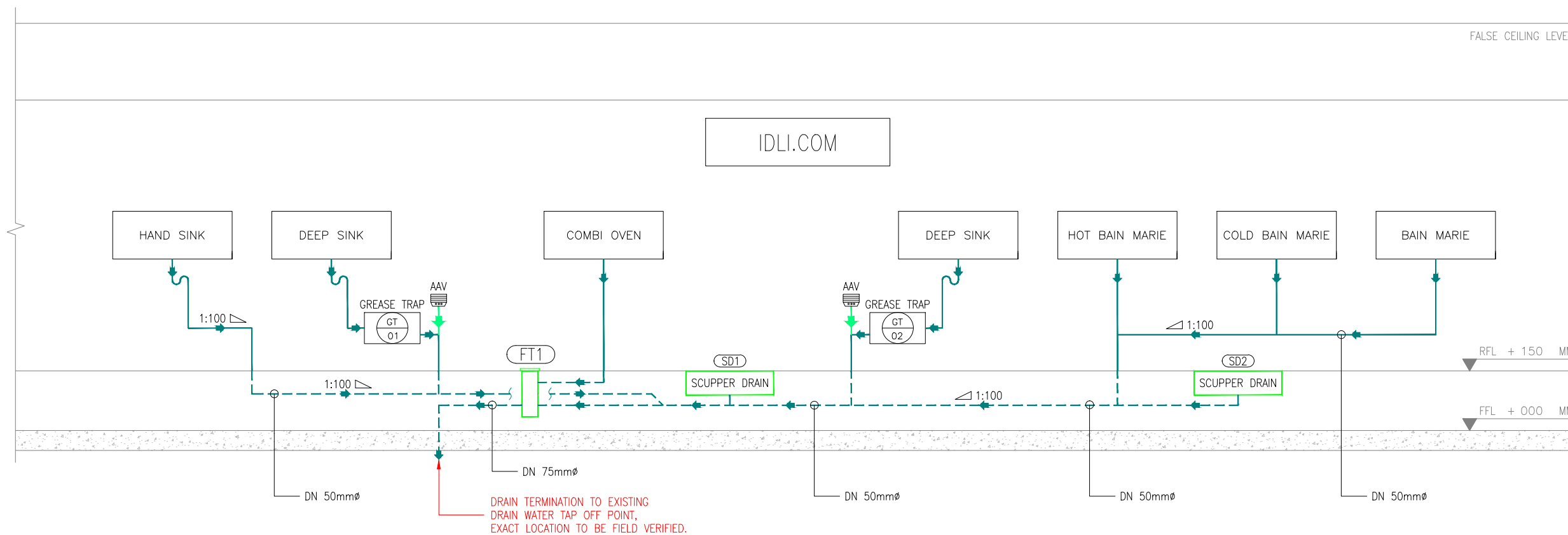
DRAWING TITLE  
DRAINAGE LAYOUT  
IDLI.COM

SCALE 1:50 DATE 10.12.24 DESIGNHS A3 SHEET

STATUS  
TENDER  
ORG PROJECT NO DRAWING TYPE NUMBER REV  
TFS XXXX PLUM P101 T00

ALL DIMENSIONS MUST BE CHECKED ON SITE  
INFORM THE ENGINEER OF ANY DISCREPANCIES PRIOR TO CONSTRUCTION

NOTES:  
IRRESPECTIVE OF THE DRAWING(S), IT IS THE CONTRACTOR'S OBLIGATION AND RESPONSIBILITY THAT SHALL BE EXECUTED AND COMPLETED IN ACCORDANCE TO THE SPECIFICATION, DRAWING(S) AS WELL AS REQUIREMENT. THE SAID DRAWING(S) SHALL NOT RELIEVE CONTRACTOR FROM ANY OBLIGATION UNDER THE CONTRACT AND IN PARTICULAR FROM ITS RESPONSIBILITY IN RELATION TO THE INSTALLATION MATERIALS AND WORKMANSHIP AND WHERE RELEVANT FROM A DUTY TO SEEK APPROVAL FROM THE COMPETENT AUTHORITY.



**01 DRAINAGE SCHEMATIC LAYOUT**  
P102 NTS

WATER SUPPLY PIPING LEGEND	
SYMBOL	DESCRIPTION
	WASTE WATER PIPE
	CONTENSATE DRAIN PIPE
	WASTE VENT PIPE
	PIPE RUNS BELOW CEILING
	PIPE RUNS THROUGH WALL
	PIPE RUNS BELOW RAISED FLOOR
	ELBOW DOWN
	ELBOW UP
	TOP CONNECTION
	BOTTOM CONNECTION
	FLOW DIRECTION

T00 10.12.24 ISSUED FOR TENDER    HS RR  
REV DATE DESCRIPTION    DSN CHK



PROJECT  
F03-07 DOMINOS, B.GALIYAN, IDLI  
NOIDA INTERNATIONAL  
AIRPORT LIMITED

DRAWING TITLE  
DRAINAGE SCHEMATIC LAYOUT  
IDLI.COM

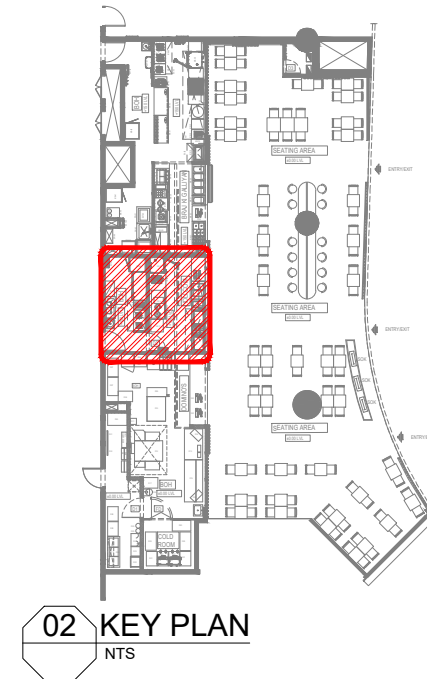
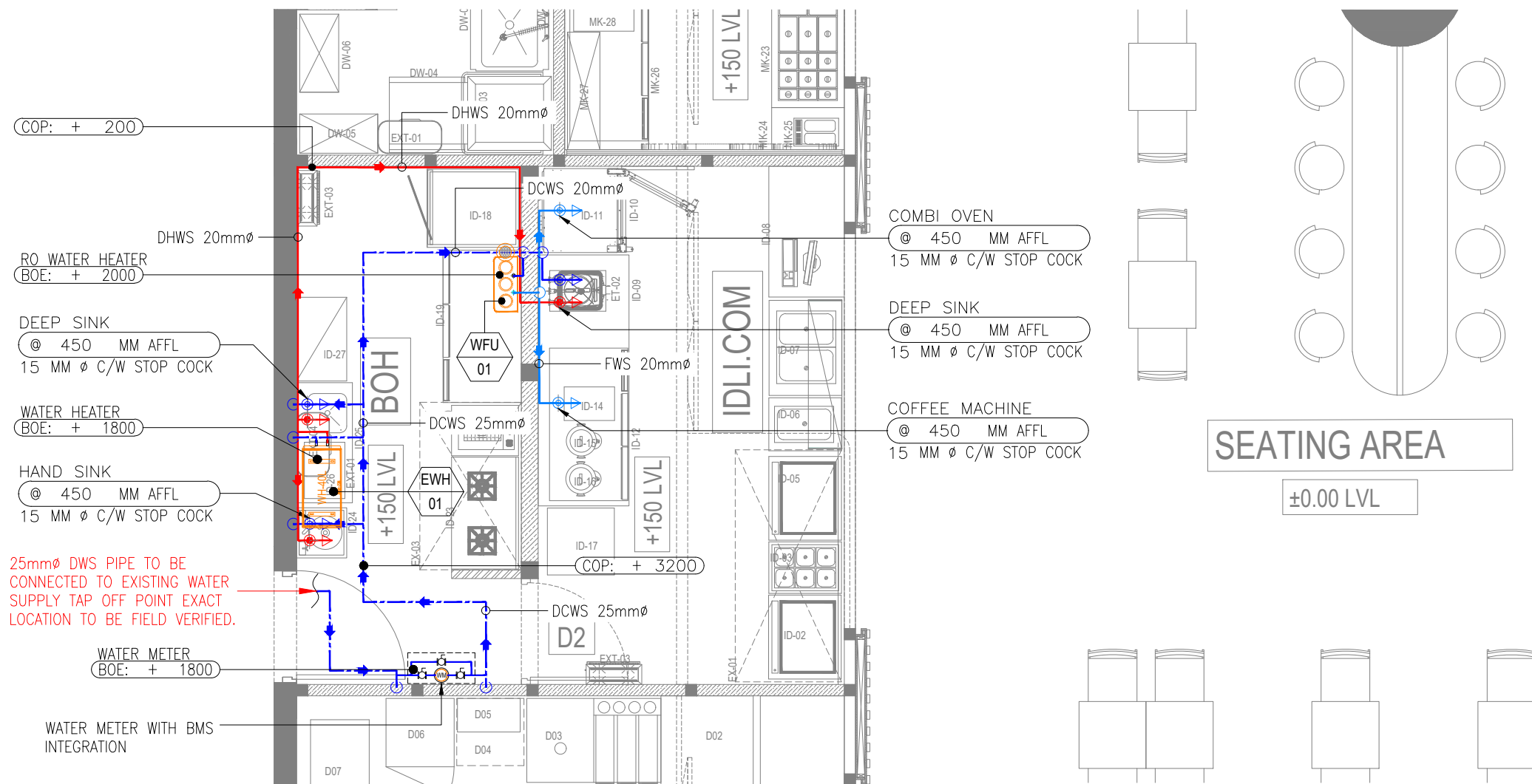
SCALE NTS    DATE 10.12.24    DESIGNHS    A3 SHEET

STATUS  
TENDER

ORG PROJECT NO DRAWING TYPE NUMBER REV  
TFS XXXX PLUM P102 T00

ALL DIMENSIONS MUST BE CHECKED ON SITE  
INFORM THE ENGINEER OF ANY DISCREPANCIES PRIOR TO CONSTRUCTION

NOTES:  
IRRESPECTIVE OF THE DRAWING(S), IT IS THE CONTRACTOR'S OBLIGATION AND RESPONSIBILITY THAT SHALL BE EXECUTED AND COMPLETED IN ACCORDANCE TO THE SPECIFICATION, DRAWING(S) AS WELL AS REQUIREMENT. THE SAID DRAWING(S) SHALL NOT RELIEVE CONTRACTOR FROM ANY OBLIGATION UNDER THE CONTRACT AND IN PARTICULAR FROM ITS RESPONSIBILITY IN RELATION TO THE INSTALLATION MATERIALS AND WORKMANSHIP AND WHERE RELEVANT FROM A DUTY TO SEEK APPROVAL FROM THE COMPETENT AUTHORITY.



WATER SUPPLY EQUIPMENT SCHEDULE					
SL.NO	EQUIPMENT NAME	EQUIPMENT TAG	CAPACITY (LTR)	CONNECTION SIZE (MM)	MIN. REQUIRED FLOW RATE (LPM)
1	WATER HEATER	EWH-01	40	20	--
2	RO WATER FILTER	WFU-01	--	20	3

WATER SUPPLY PIPING LEGEND	
SYMBOL	DESCRIPTION
	COLD WATER SUPPLY
	HOT WATER SUPPLY
	FILTERED WATER SUPPLY
	PIPE RUNS BELOW CEILING
	PIPE RUNS THROUGH WALL
	PIPE RUNS BELOW RAISED FLOOR
SYMBOL	DESCRIPTION
	ELBOW DOWN
	ELBOW UP
	TOP CONNECTION
	BOTTOM CONNECTION
	FLOW DIRECTION
	REDUSER

- NOTES:
- PIPE WORKS AND FITTINGS SHALL COMPLY WITH THE DRAWINGS AND LOCAL AUTHORITIES REQUIREMENTS.
  - CONNECT NEW COLD WATER PIPE TO EXISTING RISER LOCATED ON FLOOR LEVEL. FIELD VERIFY EXISTING LOCATION.
  - ASSUMING WATER SUPPLIED TO SITE IS QUALITY WATER THE EQUIPMENT REQUIRED RO WATER ARE SUPPLIED C/W WATER FILTRATION UNIT HOPING WATER SUPPLY HAVE ENOUGH PRESSURE.
  - FINAL WATER FILTRATION SYSTEMS, WILL BE DESIGNED BY SPECIALIST VENDORS.
  - ALL PROPOSED WATER SUPPLY TAP-OFF POINT ELEVATIONS ARE MARKED FROM RASIED FLOOR LVL.
  - PLEASE NOTE PIPE WORK AND EQUIPMENT MAY BE SHOWN DISPLACED FOR THE CLARITY OF DRAWINGS.
  - WATER METER AND VALVE ACCESSORIES ARE BELOW 200MM FROM FALSE CEILING FOR MAINTENANCE AND READING PURPOSES.
  - WATER METER & TOTALISER SHALL BE INSTALLED INSIDE BOXED CANOPY FOR FUTURE ACESIBILITY AND MONTHLY READING. (EXACT LOCATION TO BE COORDINATED AT SITE & WITH ID DESIGN).
  - WATER METER & TOTALISER SHALL BE INTEGRATED WITH BMS.
  - BRASS BALL VALVE SHALL BE PROVIDED AFTER THE WATER METER.

WATER SUPPLY ABBREVIATIONS			
EWH	ELECRTONIC WATER HEATER	C/W	CONTINUED WITH
WFU	WATER FILTRATION UNIT	FWS	FILTERED WATER SUPPLY
WM	WATER METER	DHWS	DOMESTIC HOT WATER SUPPLY
WHA	WATER HAMMER ARRESTOR	DCWS	DOMESTIC COLD WATER SUPPLY
BV	BALL VALVE	DN	NOMINAL DIA



PLUMBING WATER SUPPLY SYSTEM LEGEND	
SYMBOL	DESCRIPTION
	COLD WATER SUPPLY PIPE
	FILTERED/RO WATER SUPPLY PIPE
	HOT WATER SUPPLY PIPE
	COLD WATER SUPPLY INLET WITH ANGLE VALVE
	FILTERED/RO WATER SUPPLY INLET WITH ANGLE VALVE
	HOT WATER SUPPLY INLET WITH ANGLE VALVE
	WATER HEATER - 40 L
	WATER HAMMER ARRESTOR
	RO WATER FILTER
	WATER METER
	BALL VALVE

T00 10.12.24 ISSUED FOR TENDER HS RR  
REV DATE DESCRIPTION DSN CHK



PROJECT  
F03-07 DOMINOS, B.GALIYAN, IDLI  
NOIDA INTERNATIONAL  
AIRPORT LIMITED

DRAWING TITLE  
WATER SUPPLY LAYOUT  
IDLI.COM

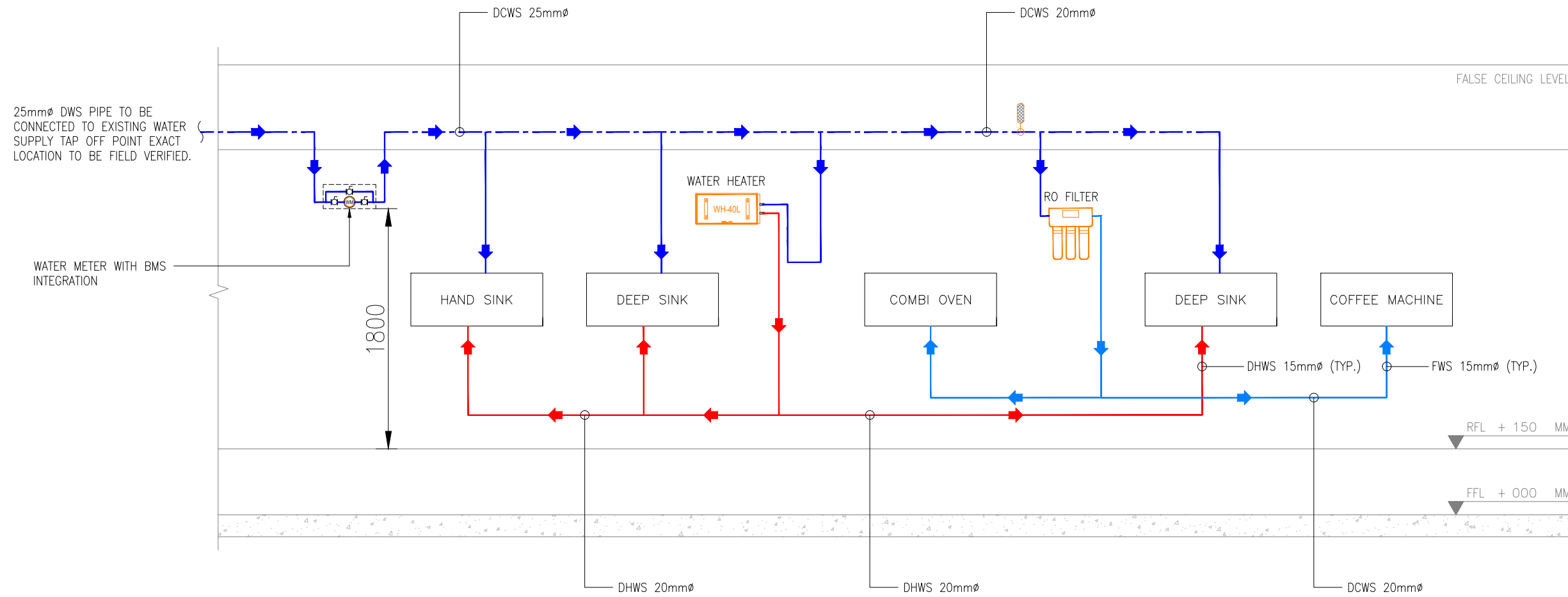
SCALE 1:50 DATE 10.12.24 DESIGNHS A3 SHEET

STATUS  
TENDER

ORG PROJECT NO DRAWING TYPE NUMBER REV  
TFS XXXX PLUM P201 T00

ALL DIMENSIONS MUST BE CHECKED ON SITE  
INFORM THE ENGINEER OF ANY DISCREPANCIES PRIOR TO CONSTRUCTION

NOTES:  
IRRESPECTIVE OF THE DRAWING(S), IT IS THE CONTRACTOR'S OBLIGATION AND RESPONSIBILITY THAT SHALL BE EXECUTED AND COMPLETED IN ACCORDANCE TO THE SPECIFICATION, DRAWING(S) AS WELL AS REQUIREMENT. THE SAID DRAWING(S) SHALL NOT RELIEVE CONTRACTOR FROM ITS OBLIGATION UNDER THE CONTRACT AND IN PARTICULAR FROM ITS RESPONSIBILITY IN RELATION TO THE INSTALLATION MATERIALS AND WORKMANSHIP AND WHERE RELEVANT FROM A DUTY TO SEEK APPROVAL FROM THE COMPETENT AUTHORITY.



**01** WATER SUPPLY SCHEMATIC LAYOUT  
P202 NTS

T00	10.12.24	ISSUED FOR TENDER	HS	RR
REV	DATE	DESCRIPTION	DSN	CHK



PROJECT  
F03-07 DOMINOS, B.GALIYAN, IDLI  
NOIDA INTERNATIONAL  
AIRPORT LIMITED

DRAWING TITLE  
WATER SUPPLY  
SCHEMATIC LAYOUT  
IDLI.COM

SCALE NTS DATE 10.12.24 DESIGNHS A3 SHEET

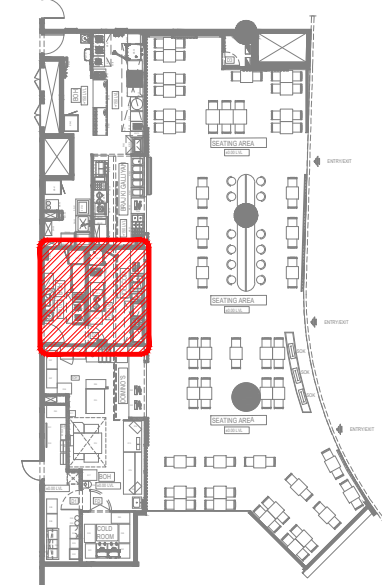
STATUS  
TENDER

ORG PROJECT NO DRAWING TYPE NUMBER REV  
TFS XXXX PLUM P202 T00

WATER SUPPLY PIPING LEGEND	
SYMBOL	DESCRIPTION
	COLD WATER SUPPLY
	HOT WATER SUPPLY
	FILTERED WATER SUPPLY
	PIPE RUNS BELOW CEILING
	PIPE RUNS THROUGH WALL
	PIPE RUNS BELOW RAISED FLOOR
SYMBOL	DESCRIPTION
	ELBOW DOWN
	ELBOW UP
	TOP CONNECTION
	BOTTOM CONNECTION
	FLOW DIRECTION
	REDUSER

ALL DIMENSIONS MUST BE CHECKED ON SITE  
INFORM THE ENGINEER OF ANY DISCREPANCIES PRIOR TO CONSTRUCTION

NOTES:  
IRRESPECTIVE OF THE DRAWING(S), IT IS THE CONTRACTOR'S OBLIGATION AND RESPONSIBILITY THAT SHALL BE EXECUTED AND COMPLETED IN ACCORDANCE TO THE SPECIFICATION, DRAWING(S) AS WELL AS REQUIREMENT. THE SAID DRAWING(S) SHALL NOT RELIEVE CONTRACTOR FROM ITS OBLIGATION UNDER THE CONTRACT AND IN PARTICULAR FROM ITS RESPONSIBILITY IN RELATION TO THE INSTALLATION MATERIALS AND WORKMANSHIP AND WHERE RELEVANT FROM A DUTY TO SEEK APPROVAL FROM THE COMPETENT AUTHORITY.



**03 KEY PLAN**  
NTS

T00 10.12.24 ISSUED FOR TENDER HS RR  
REV DATE DESCRIPTION DSN CHK

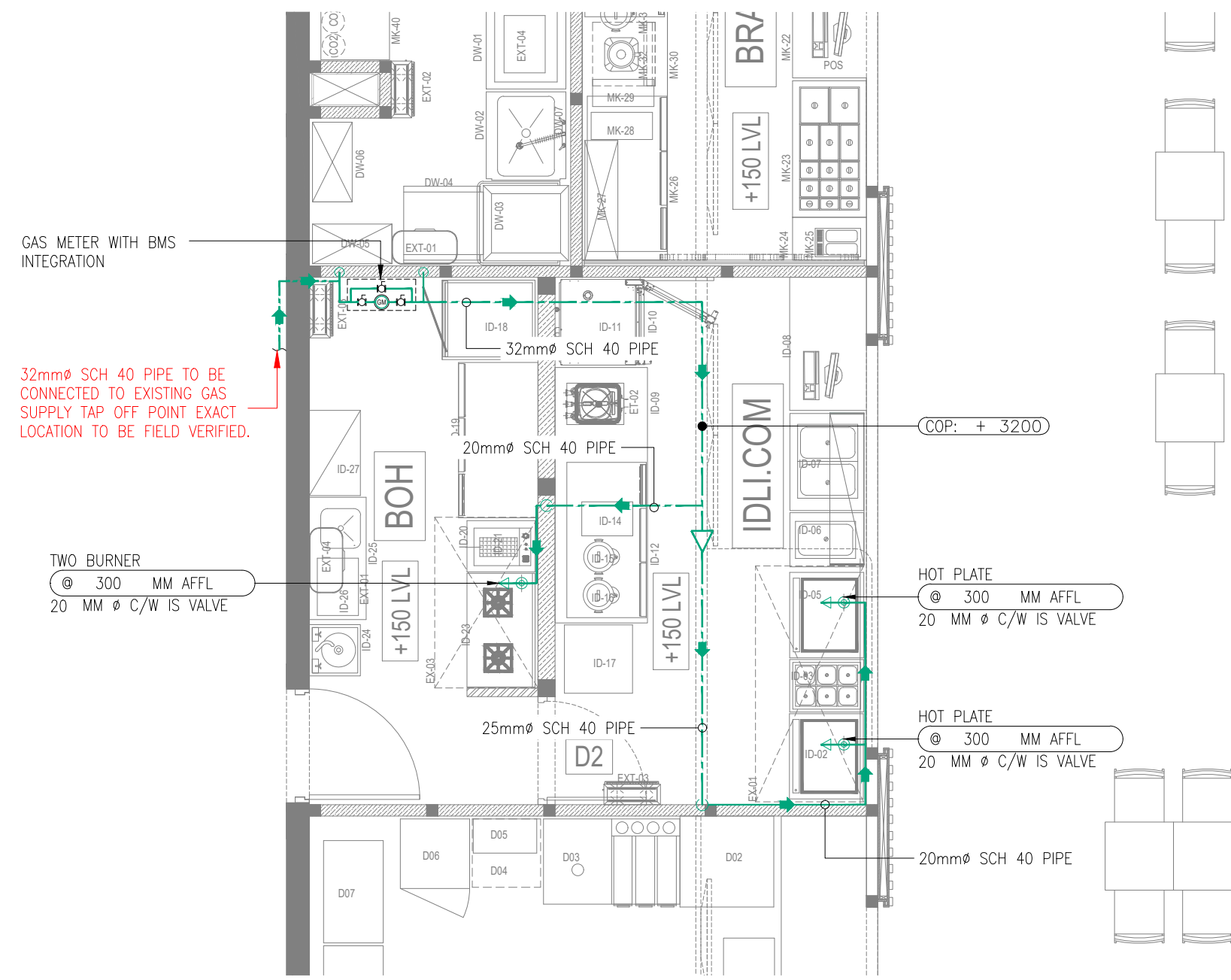


PROJECT  
**F03-07 DOMINOS, B.GALIYAN, IDLI NOIDA INTERNATIONAL AIRPORT LIMITED**

DRAWING TITLE  
**GAS SUPPLY LAYOUT IDLI.COM**

SCALE 1:50 DATE 10.12.24 DESIGNHS A3 SHEET

STATUS  
**TENDER**  
ORG PROJECT NO DRAWING TYPE NUMBER REV  
**TFS XXXX PLUM P301 T00**



GAS PIPING LEGEND	
SYMBOL	DESCRIPTION
	GAS SUPPLY
	PIPE RUNS ABOVE CEILING
	PIPE RUNS THROUGH WALL
	PIPE RUNS BELOW RAISED FLOOR
	ELBOW DOWN
	ELBOW UP
	TOP CONNECTION
	BOHSOM CONNECTION
	FLOW DIRECTION
	REDUSER

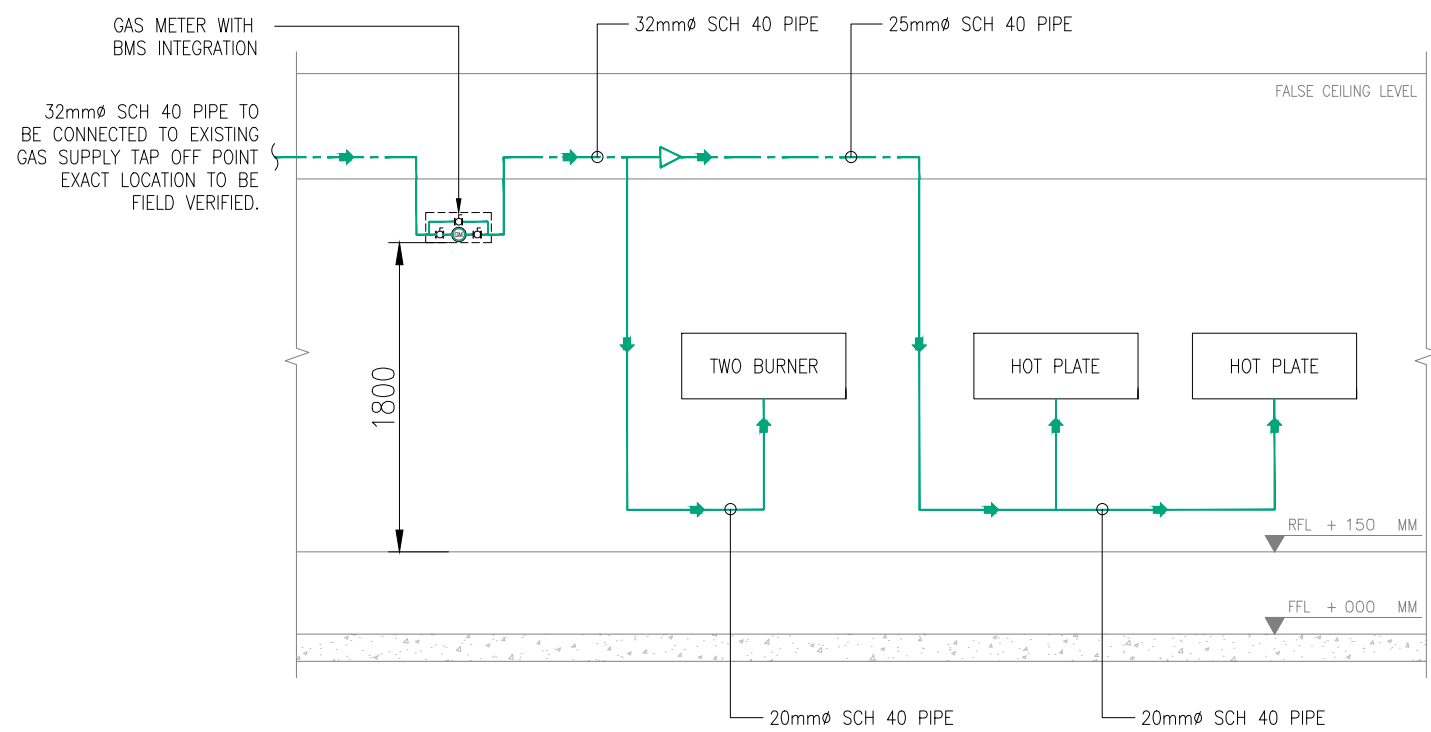
GAS SUPPLY SYSTEM LEGEND	
SYMBOL	DESCRIPTION
	GAS PIPE
	GAS INLET WITH ANGLE VALVE
	GAS METER
	BALL VALVE

NOTES:

- PIPE WORKS AND FIHSINGS SHALL COMPLY WITH THE DRAWINGS AND LOCAL AUTHORITIES REQUIREMENTS.
- PLEASE NOTE PIPE WORK AND EQUIPMENT MAY BE SHOWN DISPLACED FOR CLARITY
- ALL PROPOSED GAS SUPPLY TAP-OFF POINT ELEVATIONS ARE MARKED FROM RASIED FLOOR LVL.
- GAS METER SHALL BE INSTALLED AT READABLE FOR FUTURE MAINTENANCE AND MONTHLY READING. (EXACT LOCATION TO BE COORDINATED AT SITE & WITH ID DESIGN).

WATER SUPPLY ABBREVIATIONS			
IS	ISOLATION	C/W	CONTINUED WITH
CS	CARBON STEEL	COP	CENTRE OF PIPE

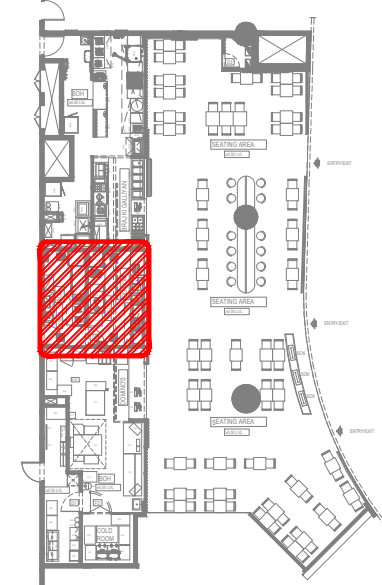
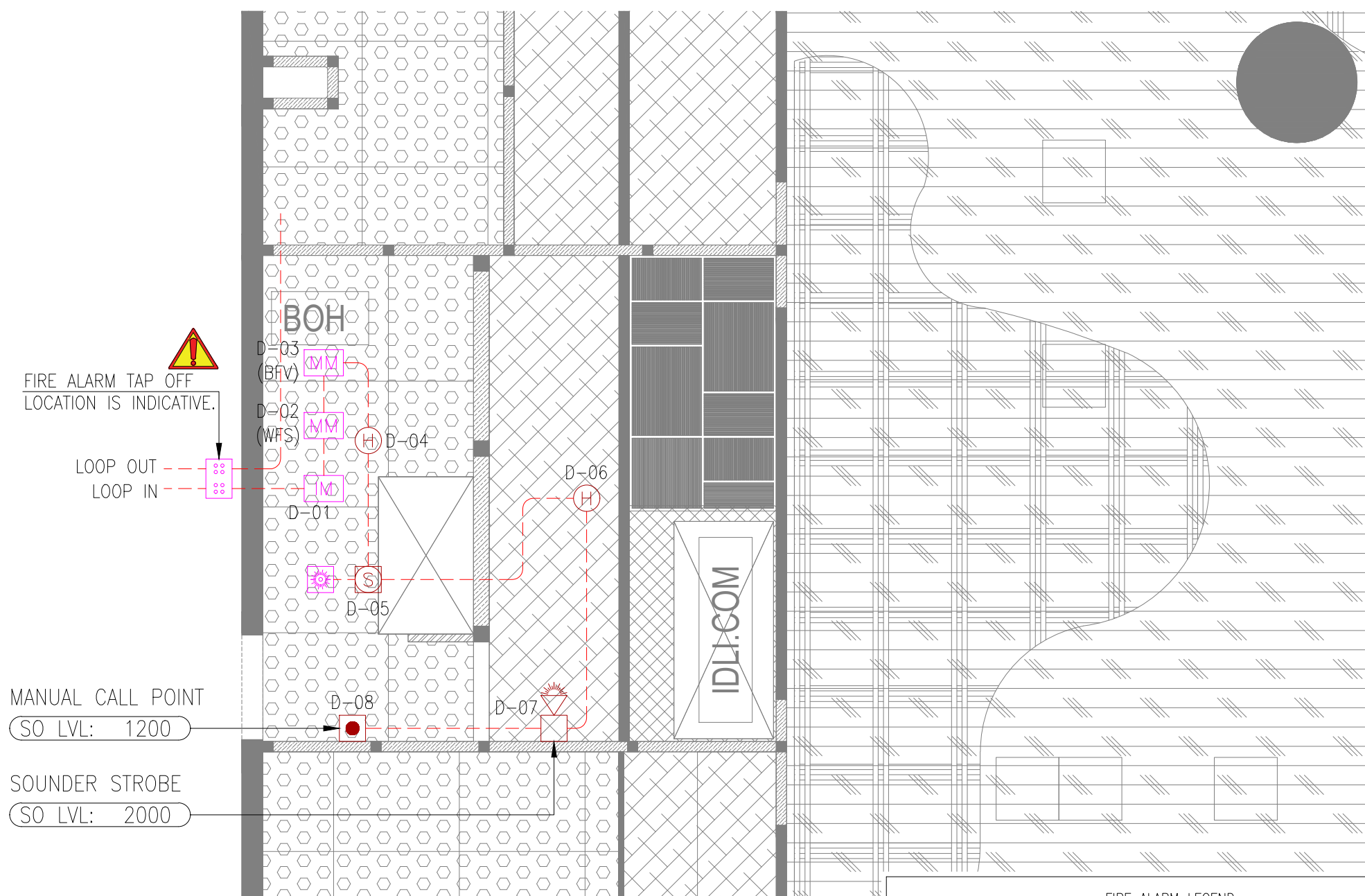
**01 GAS SUPPLY LAYOUT**  
P301 1:50



**02 GAS SUPPLY SCHEMATIC LAYOUT**  
P301 NTS

ALL DIMENSIONS MUST BE CHECKED ON SITE  
INFORM THE ENGINEER OF ANY DISCREPANCIES PRIOR TO CONSTRUCTION

NOTES:  
IRRESPECTIVE OF THE DRAWING(S), IT IS THE CONTRACTOR'S OBLIGATION AND RESPONSIBILITY THAT SHALL BE EXECUTED AND COMPLETED IN ACCORDANCE TO THE SPECIFICATION, DRAWING(S) AS WELL AS REQUIREMENT. THE SAID DRAWING(S) SHALL NOT RELIEVE CONTRACTOR FROM ITS OBLIGATION UNDER THE CONTRACT AND IN PARTICULAR FROM ITS RESPONSIBILITY IN RELATION TO THE INSTALLATION MATERIALS AND WORKMANSHIP AND WHERE RELEVANT FROM A DUTY TO SEEK APPROVAL FROM THE COMPETENT AUTHORITY.



**02 KEY PLAN**  
NTS

**01 FIRE ALARM LAYOUT**  
F101 1:50

**NOTES**

- ALL DIMENSIONS & LEVELS ARE IN "MM" OR OTHERWISE SPECIFIED.
- COMPLY WITH THE REQUIREMENTS OF NFPA 72.
- FIRE ALARM DEVICES TO BE SAME / RECOMMENDED MAKE USED AT AIRPORT TO AVOID COMPATIBILITY ISSUES.
- FIRE ALARM SYSTEM LOOP CABLE TO BE SAME SIZE & TYPE AS USED BY AIRPORT.
- RESPONSE INDICATOR (RI) TO BE PROVIDED AT FALSE CEILING FOR ABOVE CEILING DETECTORS.
- ALL CONDUITING TO BE EMT OR AS PER AIRPORT NORMS.
- CEILING VOID DETECTORS EXISTING AT SITE, TO BE RETAINED.

**ABBREVIATIONS**

- BFV - BUTTERFLY VALVE
- WFS - WATER FLOW SWITCH

FIRE ALARM LEGEND		
SYMBOL	DESCRIPTION	QTY
(H)	HEAT DETECTOR (CEILING MOUNTED)	02
(S)	SMOKE DETECTOR (CEILING VOID)	01
(RI)	RESPONSE INDICATOR	01
(MC)	MANUAL CALL POINT (BREAK GLASS UNIT)	01
(SS)	FIRE ALARM LOOP SOUNDER STROBE (WALL MOUNTED)	01
(IM)	ISOLATION MODULE	01
(MM)	MONITOR MODULE	02
(LJB)	LOOP JUNCTION BOX	--
(---)	FIRE ALARM CIRCUIT	--

T00 10.12.24 ISSUED FOR TENDER TT AS  
REV DATE DESCRIPTION DSN CHK



PROJECT  
**F03-07 DOMINOS, B.GALIYAN, IDLI  
NOIDA INTERNATIONAL  
AIRPORT LIMITED**

DRAWING TITLE  
**FIRE ALARM LAYOUT  
IDLI.COM**

SCALE 1:50 DATE 10.12.24 DESIGN TT A3 SHEET

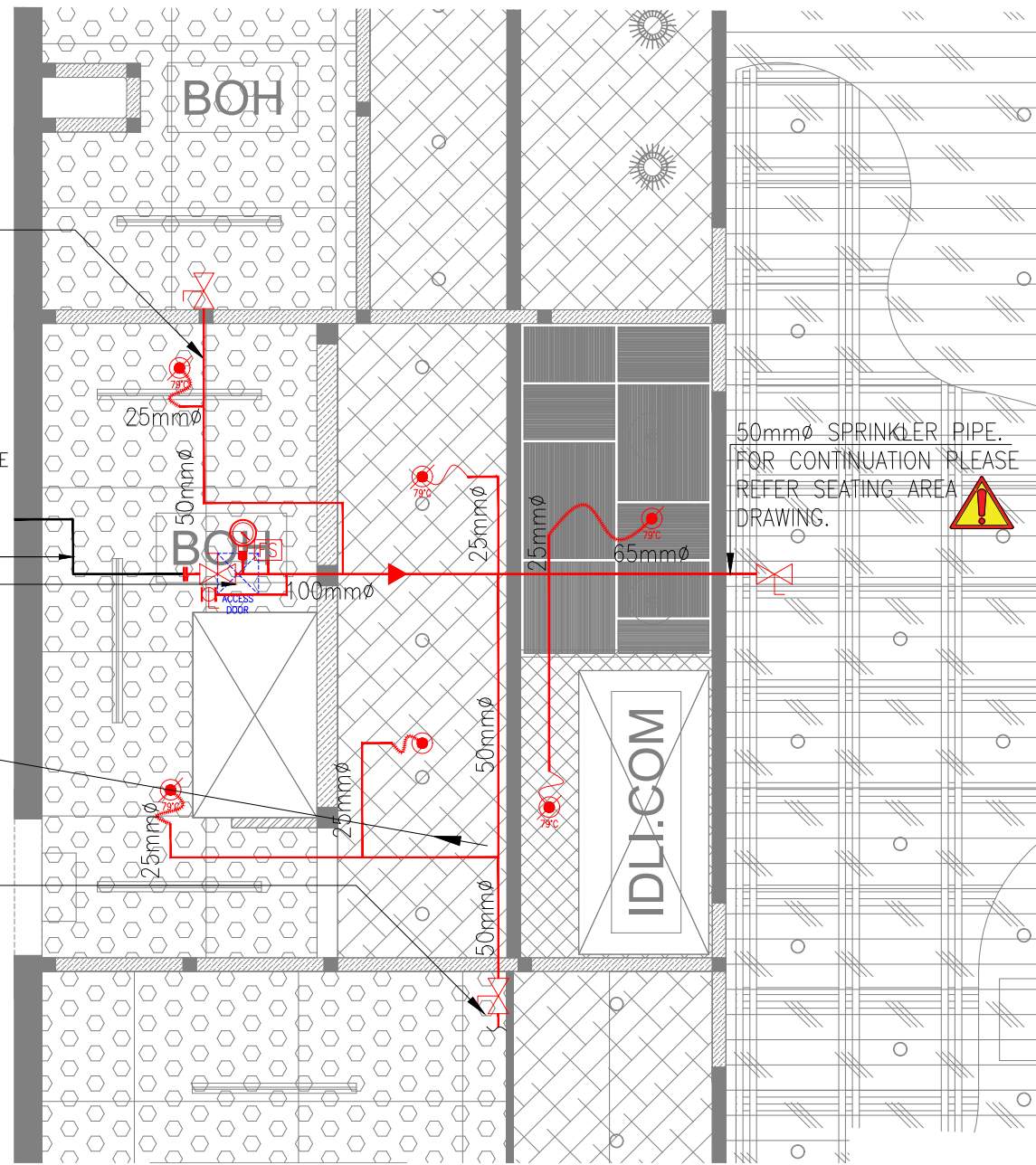
STATUS  
**TENDER**









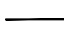

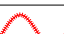
ORG PROJECT NO DRAWING TYPE NUMBER REV  
**TFS XXXX FIRE F101 T00**



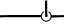
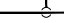
 50mmØ SPRINKLER PIPE. FOR CONTINUATION PLEASE REFER IDLI.COM DRAWING.

AIRPORT TO PROVIDE Ø100 MM EXISTING SPRINKLER PIPE TAP-OFF  
TRAP DOOR FOR ACCESSING VALVES.

 50mmØ SPRINKLER PIPE. FOR CONTINUATION PLEASE REFER DOMINOS DRAWING.

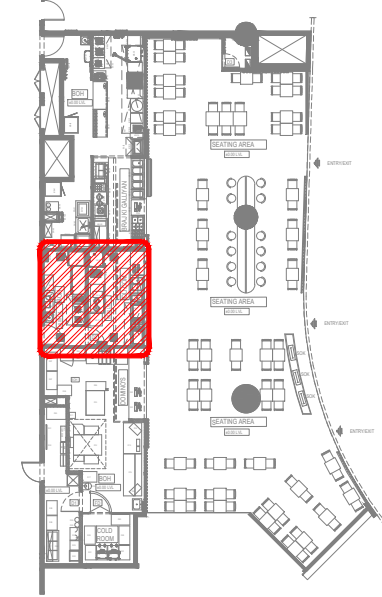


FIRE SPRINKLER SYSTEM LEGEND		
SYMBOL	DESCRIPTION	QTY
	SPRINKLER HEAD PENDENT	02
	SPRINKLER HEAD PENDENT HIGH TEMPERATURE	04
	SPRINKLER BUTTERFLY VALVE (ISOLATION VALVE)	01
	FLOW SWITCH	01
	PRESSURE GAUGE	01
	BALL VALVE	01
	ACCESS DOOR	01
	SPRINKLER PIPE	--
	SPRINKLER PIPE EXISTING	--
	SPRINKLER PIPE REDUCER	--
	SPRINKLER PIPE FLEXIBLE CONNECTION	06

- NOTES:
- INSTALLATION WORKS FOR THE AUTOMATIC SPRINKLERS SYSTEM SHALL COMPLY WITH THE REQUIREMENTS OF NPFA 13.
  - ISOLATION VALVE SHALL BE CONSIDERED AT SPRINKLER TAPPING (PN16) AND TRAP DOOR SHALL BE PROVIDED FOR THE SAME FOR EASY MAINTENANCE.
  - M.S "C" CLASS PIPES SHALL BE USED FOR THE FF PIPES.
  - DRAIN PIPE WITH BALL VALVE TO BE PROVIDED AFTER THE ISOLATION VALVE FOR MAINTENANCE PURPOSE AS PER SITE CONDITION.
  - ALL FIRE SPRINKLER PENDANT SHALL HAVE A COVERAGE AREA APPROXIMATELY 24 SQ.METER.
  - PRESSURE GAUGE TO BE PROVIDED AFTER ISOLATION VALVE.
  - KITCHEN HOOD FIRE SUPPRESSION SYSTEM SHOULD BE DESIGNED BY SPECIALIST VENDORS.
-  ELBOW DOWN  
 ELBOW UP  
 TOP CONNECTION  
 BOTTOM CONNECTION

ALL DIMENSIONS MUST BE CHECKED ON SITE  
INFORM THE ENGINEER OF ANY DISCREPANCIES PRIOR TO CONSTRUCTION

NOTES:  
IRRESPECTIVE OF THE DRAWING(S), IT IS THE CONTRACTOR'S OBLIGATION AND RESPONSIBILITY THAT SHALL BE EXECUTED AND COMPLETED IN ACCORDANCE TO THE SPECIFICATION, DRAWING(S) AS WELL AS REQUIREMENT. THE SAID DRAWING(S) SHALL NOT RELIEVE CONTRACTOR FROM ANY OBLIGATION UNDER THE CONTRACT AND IN PARTICULAR FROM ITS RESPONSIBILITY IN RELATION TO THE INSTALLATION MATERIALS AND WORKMANSHIP AND WHERE RELEVANT FROM A DUTY TO SEEK APPROVAL FROM THE COMPETENT AUTHORITY.



02 KEY PLAN  
NTS

T00	10.12.24	ISSUED FOR TENDER	ST	RR
REV	DATE	DESCRIPTION	DSN	CHK



PROJECT  
F03-07 DOMINOS, B.GALIYAN, IDLI  
NOIDA INTERNATIONAL  
AIRPORT LIMITED

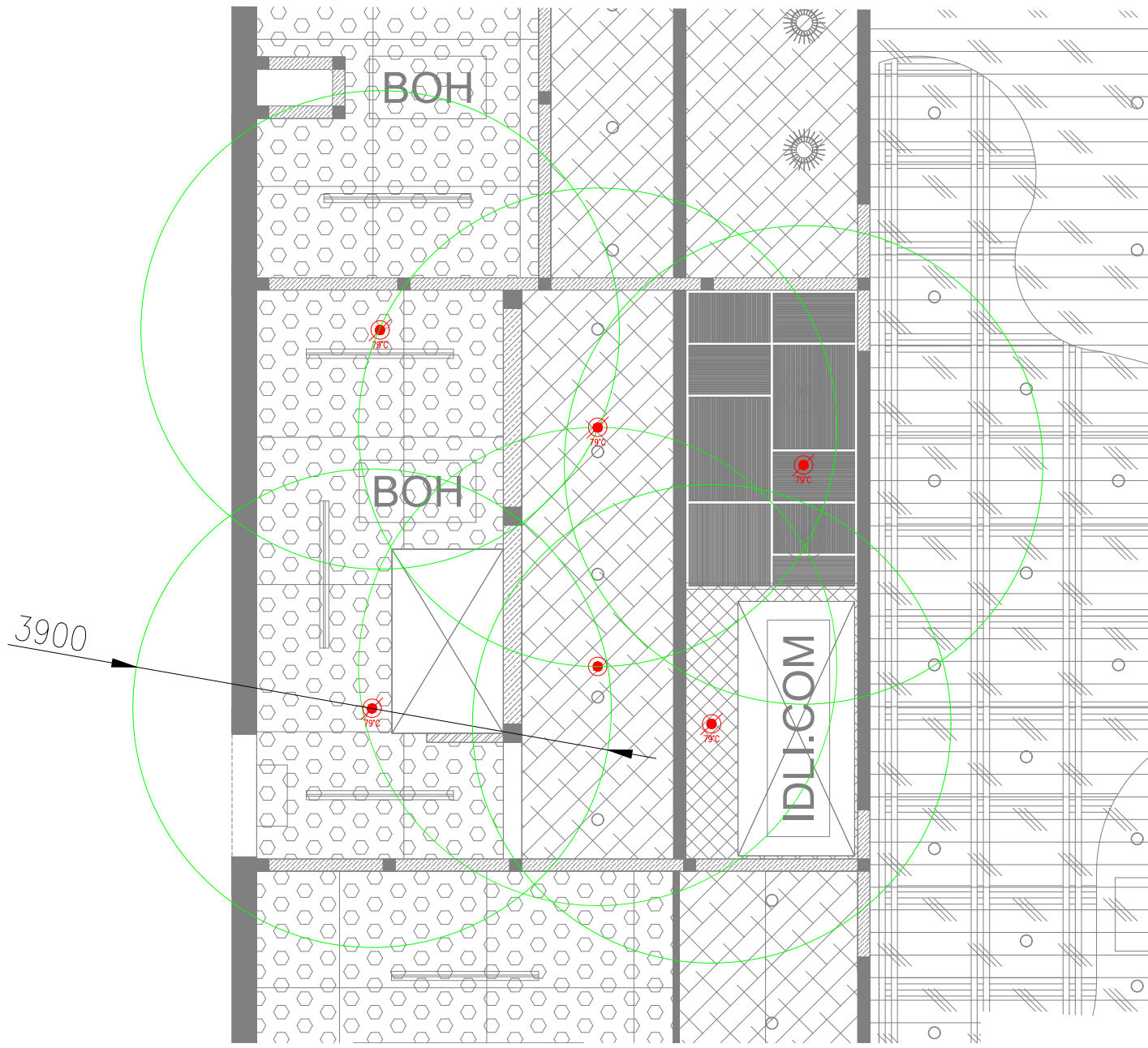
DRAWING TITLE  
FIRE SPRINKLER LAYOUT  
IDLI.COM

SCALE 1:50 DATE 10.12.24 DESIGNST A3 SHEET

STATUS  
TENDER

ORG	PROJECT NO	DRAWING TYPE	NUMBER	REV
TFS	XXXX	FIRE	F201	T00



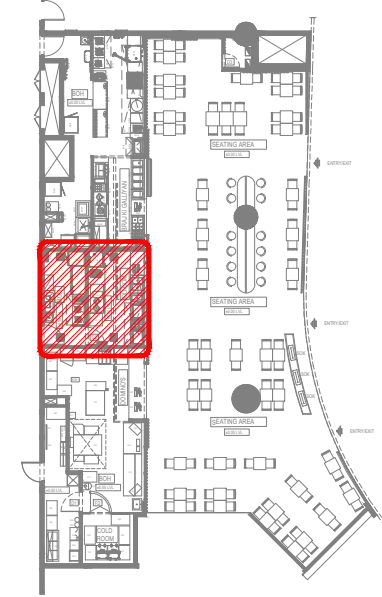


FIRE SPRINKLER SYSTEM LEGEND		
SYMBOL	DESCRIPTION	QTY
	SPRINKLER HEAD PENDENT	02
	SPRINKLER HEAD PENDENT HIGH TEMPERATURE	04
	SPRINKLER BUTTERFLY VALVE (ISOLATION VALVE)	01
	FLOW SWITCH	01
	PRESSURE GAUGE	01
	BALL VALVE	01
	ACCESS DOOR	01
	SPRINKLER PIPE	--
	SPRINKLER PIPE EXISTING	--
	SPRINKLER PIPE REDUCER	--
	SPRINKLER PIPE FLEXIBLE CONNECTION	06

- NOTES:
- INSTALLATION WORKS FOR THE AUTOMATIC SPRINKLERS SYSTEM SHALL COMPLY WITH THE REQUIREMENTS OF NPFA 13.
  - ISOLATION VALVE SHALL BE CONSIDERED AT SPRINKLER TAPPING (PN16) AND TRAP DOOR SHALL BE PROVIDED FOR THE SAME FOR EASY MAINTENANCE.
  - M.S "C" CLASS PIPES SHALL BE USED FOR THE FF PIPES.
  - DRAIN PIPE WITH BALL VALVE TO BE PROVIDED AFTER THE ISOLATION VALVE FOR MAINTENANCE PURPOSE AS PER SITE CONDITION.
  - ALL FIRE SPRINKLER PENDANT SHALL HAVE A COVERAGE AREA APPROXIMATELY 24 SQ.METER.
  - PRESSURE GAUGE TO BE PROVIDED AFTER ISOLATION VALVE.
  - KITCHEN HOOD FIRE SUPPRESSION SYSTEM SHOULD BE DESIGNED BY SPECIALIST VENDORS.
- ELBOW DOWN  
 ELBOW UP  
 TOP CONNECTION  
 BOTTOM CONNECTION

ALL DIMENSIONS MUST BE CHECKED ON SITE  
INFORM THE ENGINEER OF ANY DISCREPANCIES PRIOR TO CONSTRUCTION

NOTES:  
IRRESPECTIVE OF THE DRAWING(S), IT IS THE CONTRACTOR'S OBLIGATION AND RESPONSIBILITY THAT SHALL BE EXECUTED AND COMPLETED IN ACCORDANCE TO THE SPECIFICATION, DRAWING(S) AS WELL AS REQUIREMENT. THE SAID DRAWING(S) SHALL NOT RELIEVE CONTRACTOR FROM ANY OBLIGATION UNDER THE CONTRACT AND IN PARTICULAR FROM ITS RESPONSIBILITY IN RELATION TO THE INSTALLATION MATERIALS AND WORKMANSHIP AND WHERE RELEVANT FROM A DUTY TO SEEK APPROVAL FROM THE COMPETENT AUTHORITY.



02 KEY PLAN  
NTS

REV	DATE	DESCRIPTION	DSN	CHK
T00	10.12.24	ISSUED FOR TENDER	ST	RR



PROJECT  
F03-07 DOMINOS, B.GALIYAN, IDLI  
NOIDA INTERNATIONAL  
AIRPORT LIMITED

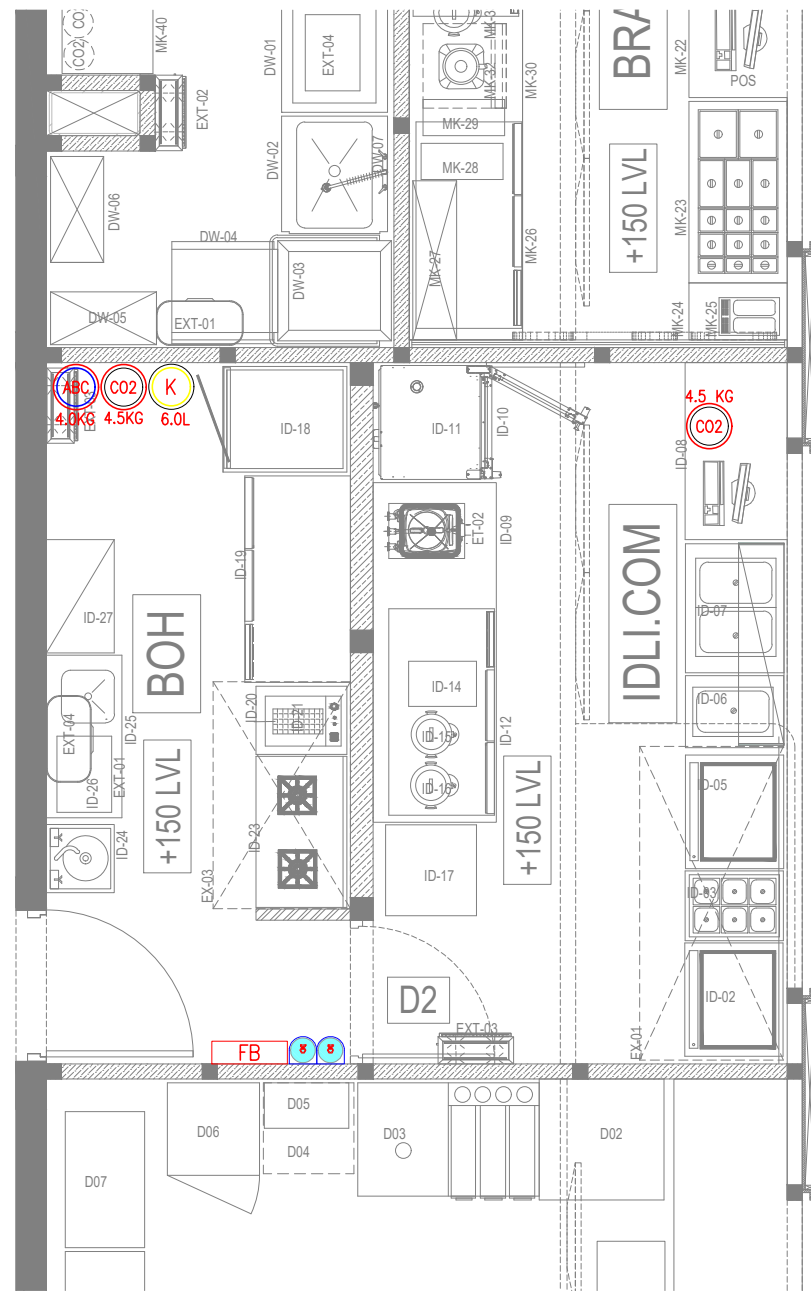
DRAWING TITLE  
FIRE SPRINKLER LAYOUT  
IDLI.COM

SCALE 1:50 DATE 10.12.24 DESIGNST A3 SHEET

STATUS  
TENDER

ORG	PROJECT NO	DRAWING TYPE	NUMBER	REV
TFS	XXXX	FIRE	F202	T00

01 FIRE SPRINKLER PENDANT COVERAGE AREA LAYOUT  
F202 1:50

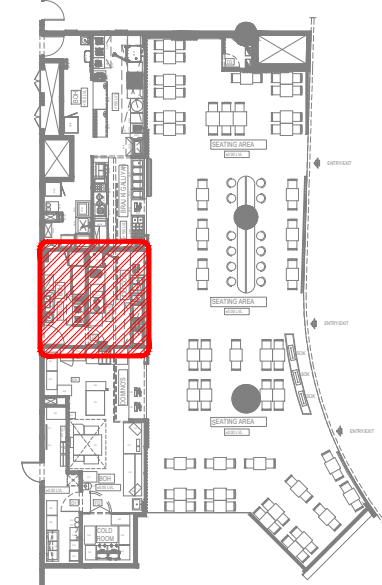


FIRE EXTINGUISHERS LEGEND		
SYMBOL	DESCRIPTION	QTY
	FIRE EXTINGUISHER_CLASS ABC (DRY POWDER) – 4 KG	01
	FIRE EXTINGUISHER_CLASS BC (CO2) – 4.5 KG	02
	FIRE EXTINGUISHER_CLASS K (WET CHEMICAL) – 6.0 Ltr	01
	FIRE SUPPRESSION CYLINDER SET	01
	FIRE BLANKET – FB	01

- NOTES:
- FIRE EXTINGUISHER SHALL BE INSTALLED IN LOCATION WHERE THEY ARE VISIBLE
  - FIRE EXTINGUISHER SHALL BE CONSPICUOUSLY LOCATED WHERE THEY ARE READILY ACCESSIBLE AND IMMEDIATELY AVAILABLE IN THE EVENT OF FIRE.
  - FIRE EXTINGUISHER SHALL BE INSTALLED SO THAT THE FIRE EXTINGUISHER'S OPERATING INSTRUCTIONS FACE OUTWARD.
  - FIRE EXTINGUISHER SHALL BE INSTALLED SO THAT IN NO CASES THE TOP OF THE EXTINGUISHER IS NOT MORE THAT 1500MM ABOVE THE FLOOR LEVEL OR THE CLEARANCE BETWEEN THE BOTTOM OF THE HAND PORTABLE FIRE EXTINGUISHER AND THE FLOOR BE LESS THAN 100MM.
  - SIGNS OR OTHER MEANS USED TO INDICATE FIRE EXTINGUISHER LOCATION SHALL BE LOCATED IN CLOSE PROXIMITY TO THE EXTINGUISHER AND SHALL BE VISIBLE FROM THE NORMAL PATH OF TRAVEL.
  - ALL FIRE EXTINGUISHER SIGNS TO BE PROVIDED WITH NIGHT GLOW.

ALL DIMENSIONS MUST BE CHECKED ON SITE  
INFORM THE ENGINEER OF ANY DISCREPANCIES PRIOR TO CONSTRUCTION

NOTES:  
IRRESPECTIVE OF THE DRAWING(S), IT IS THE CONTRACTOR'S OBLIGATION AND RESPONSIBILITY THAT SHALL BE EXECUTED AND COMPLETED IN ACCORDANCE TO THE SPECIFICATION, DRAWING(S) AS WELL AS REQUIREMENT. THE SAID DRAWING(S) SHALL NOT RELIEVE CONTRACTOR FROM ANY OBLIGATION UNDER THE CONTRACT AND IN PARTICULAR FROM ITS RESPONSIBILITY IN RELATION TO THE INSTALLATION MATERIALS AND WORKMANSHIP AND WHERE RELEVANT FROM A DUTY TO SEEK APPROVAL FROM THE COMPETENT AUTHORITY.



05 KEY PLAN  
NTS

TOO	10.12.24	ISSUED FOR TENDER	ST	SF
REV	DATE	DESCRIPTION	DSN	CHK



PROJECT  
**B.GALIYAN  
NOIDA INTERNATIONAL  
AIRPORT LIMITED**

DRAWING TITLE  
**FIRE EXTINGUISHER LAYOUT**

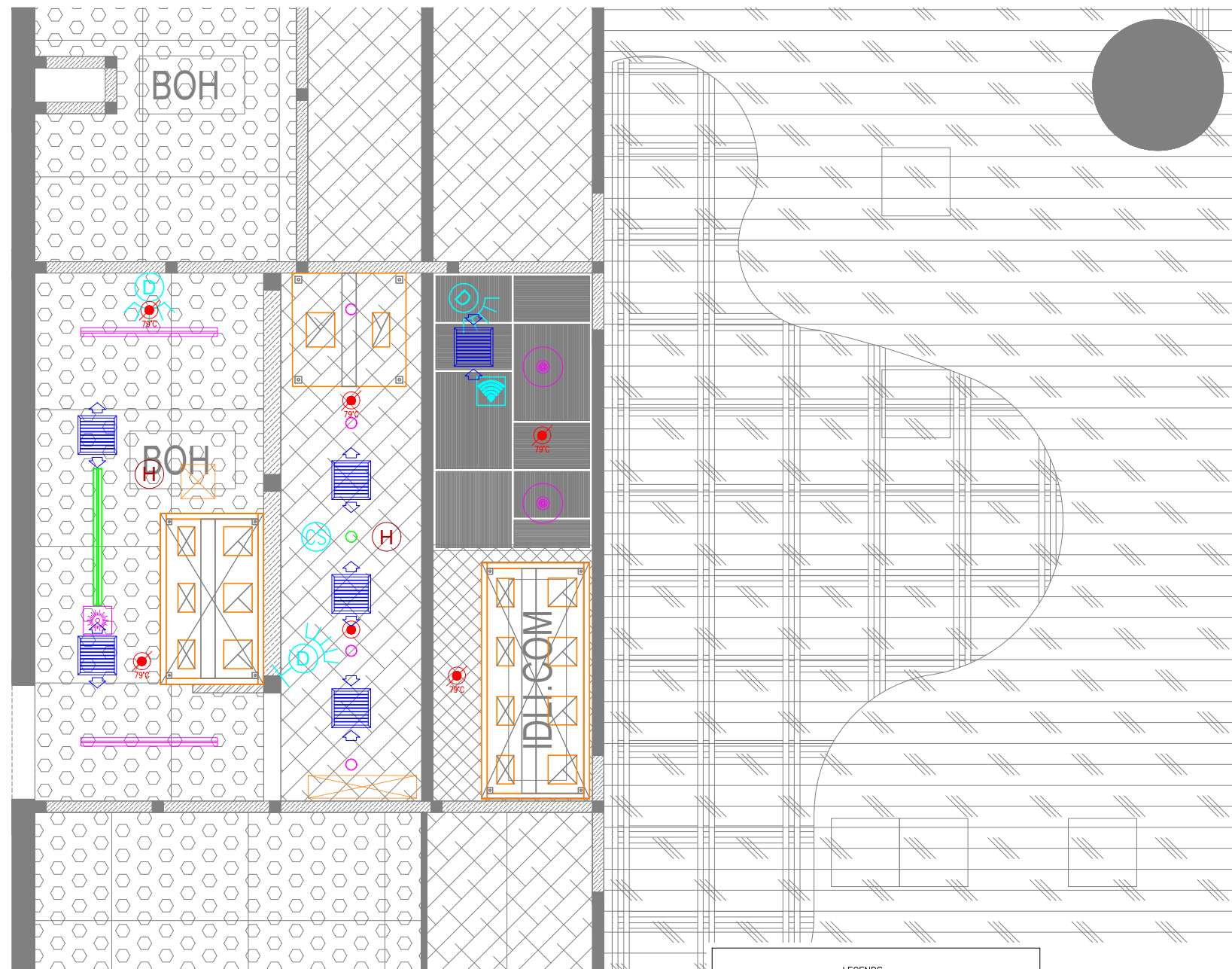
SCALE	1:50	DATE	10.12.24	DESIGNST	A3	SHEET
-------	------	------	----------	----------	----	-------

STATUS					
TENDER					
ORG	PROJECT NO	DRAWING TYPE	NUMBER	REV	
TFS	XXXX	FIRE	F301	T00	

01 FIRE EXTINGUISHER LAYOUT  
F301 1:50

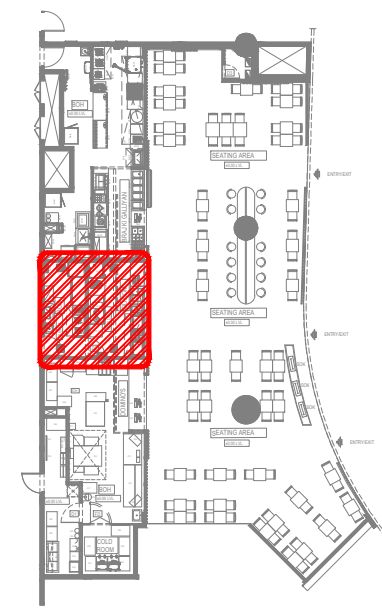
ALL DIMENSIONS MUST BE CHECKED ON SITE  
INFORM THE ENGINEER OF ANY DISCREPANCIES PRIOR TO CONSTRUCTION

NOTES:  
IRRESPECTIVE OF THE DRAWING(S), IT IS THE CONTRACTOR'S OBLIGATION AND RESPONSIBILITY THAT SHALL BE EXECUTED AND COMPLETED IN ACCORDANCE TO THE SPECIFICATION, DRAWING(S) AS WELL AS REQUIREMENT. THE SAID DRAWING(S) SHALL NOT RELIEVE CONTRACTOR FROM ITS OBLIGATION UNDER THE CONTRACT AND IN PARTICULAR FROM ITS RESPONSIBILITY IN RELATION TO THE INSTALLATION MATERIALS AND WORKMANSHIP AND WHERE RELEVANT FROM A DUTY TO SEEK APPROVAL FROM THE COMPETENT AUTHORITY.



**01 FIRE ALARM LAYOUT**  
F101 1:50

LEGENDS	
	ACMV
	LIGHTING
	EMERGENCY LIGHTING
	CCTV, DATA & PA
	FIRE



**02 KEY PLAN**  
NTS

T00 10.12.24 ISSUED FOR TENDER MB RR  
REV DATE DESCRIPTION DSN CHK



PROJECT  
F03-07 DOMINOS, B.GALIYAN, IDLI  
NOIDA INTERNATIONAL  
AIRPORT LIMITED

DRAWING TITLE  
M&E RCP COORDINATION LAYOUT  
IDLI.COM

SCALE 1:50 DATE 10.12.24 DESIGNMB A3 SHEET

STATUS  
TENDER

ORG	PROJECT NO	DRAWING TYPE	NUMBER	REV
TFS	XXXX	COOR	X101	T00