

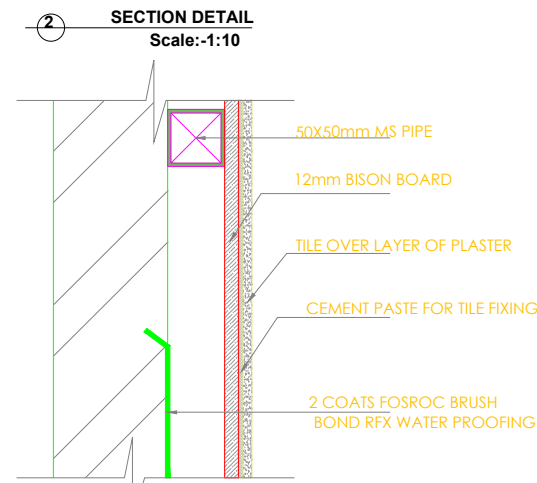
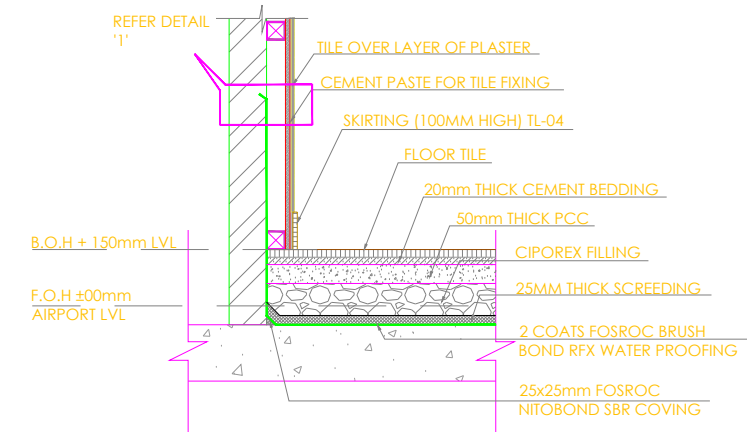
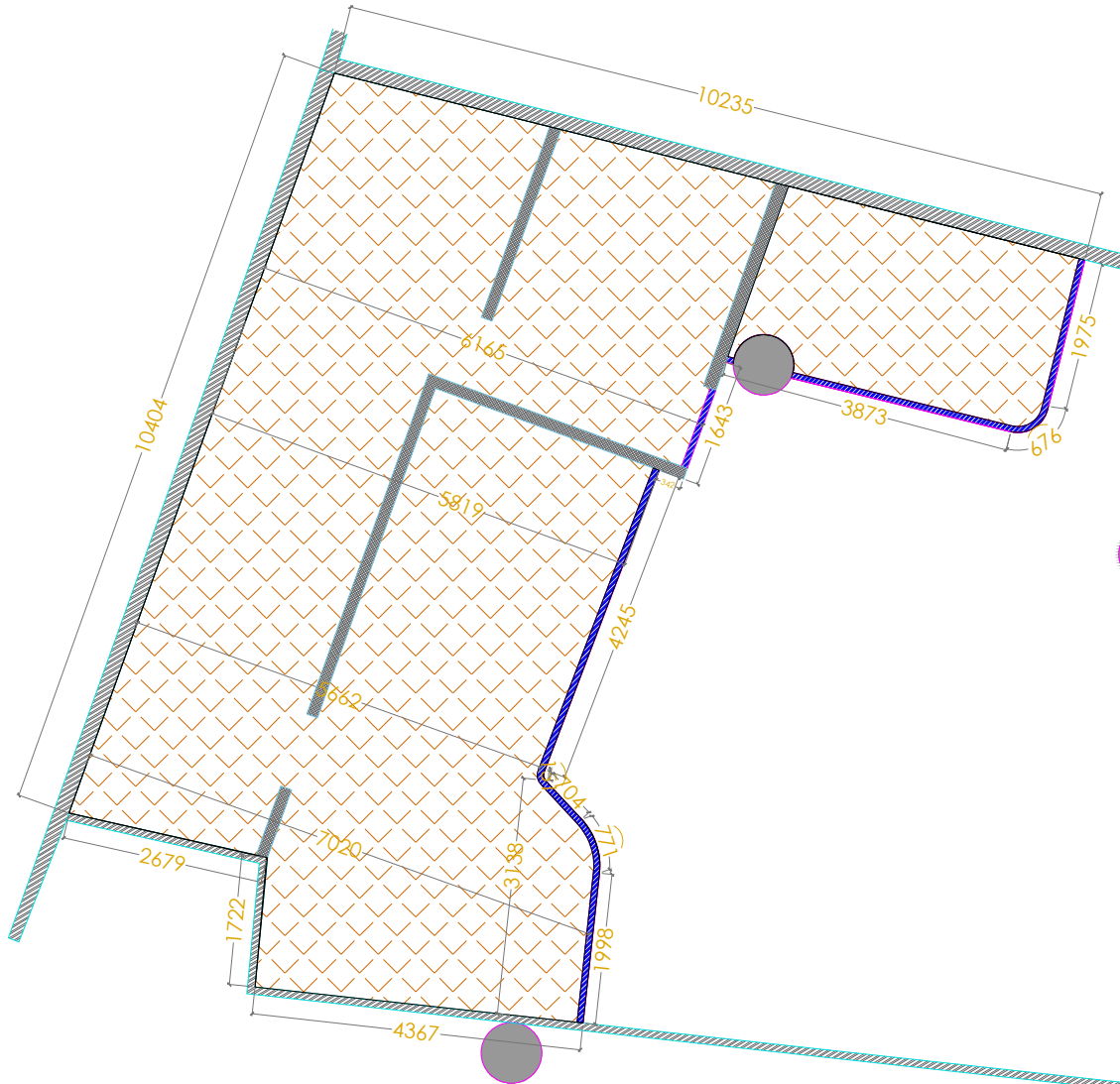


WATERPROOFING LEGEND	
SYMBOL	DESCRIPTION
	WATER PROOFING
	BUND WALL

WATER PROOFING METHODOLOGY:

1. Removal of Top Screed from the Mother Slab.
2. Cleaning of the Mother Slab with Hard Brush & Removal of Dirt from the Surface with Air Blowers
3. Applying of the Fosroc RFX Brush Bond Coating on the mother slab with Brush in Clock wise directions & on all 4 Sides Walls till 1200mm Height. If the Floor is raised 300mm

4. After drying of the 1st Coat of the Brush Bond Coating. 2nd Coat is applied in the Anticlockwise Directions
5. After drying of entire Surface say 24 Hours. we will fill Water to 6 Inch Levels for Ponding Testing.
6. Water will be kept for observations for 72 Hours. If Leakage is observed. Water is emptied
7. Above Procedure is Repeated.
8. If No Leakage is observed after 72 Hours. Water will be drained out from the Floor Surface.
9. Protective Screeding mixed with FOSROC NITOBOND SBR of Average 25mm thickness will be laid above water Proofing Surface with coving & Wall junction.
10. After Dryings of Protective Screed say 2 Days. Drain Lines are laid on the Floor with Slope & main Drain lines chambers are done.
12. After this floor raising by Light Seaproax block will be achieved followed with flooring material as desired.



ZOOM SECTION DETAIL
Scale:-1:5

- GENERAL NOTES:
1. ALL DIMENSIONS ARE IN MILLIMETERS UNLESS NOTED OTHERWISE. ALL DIMENSIONS TO BE VERIFIED ON SITE & APPROVED BY THE SUPERVISOR.
 2. DO NOT TAKE DIRECT MEASUREMENTS FROM THE DRAWINGS.
 3. THE DRAWING SHOULD BE READ IN CONJUNCTION WITH OTHER RELEVANT ARCHITECTURAL, STRUCTURAL, MECHANICAL AND ELECTRICAL DRAWINGS AND ALL RELEVANT SECTIONS OF THE SPECIFICATIONS.
 4. CONTRACTOR TO PROVIDE THEIR SHOP DRAWINGS FOR APPROVAL.
 5. NO PART OF THE DRAWING AND DESIGN CONTAINED HEREIN MAY BE REPRODUCED WITHOUT ANY CONSENT OF A3 KITCHEN.

LEGEND:

REVISION		

REV	DESCRIPTION	DATE

CLIENT:
GORDAN RAMSAY

PROJECT NAME:
STREET PIZZA

LOCATION:
4027, LVL-4, TERMINAL-2,
MUMBAI AIRPORT

DRAWING TITLE:
**FURNITURE LAYOUT
WATER PROOFING - LAYOUT**

DRAWN BY: PRAKASH	
CHECKED BY: NA	
APPROVED BY: AD	
DATE: 10-NOV-2024	SHEET SIZE: A3
SCALE: 1:75	REVISION: 02
SHEET NO: 01-SP-MU-FL-1.0	