

IN-DXN-FOOD MAHAL-SEATING AREA_M&E DRAWINGS

CONTENTS		
DWG NO.	DRAWING TITLE	PAGE NO.
M101	IN-DXN-FOOD MAHAL-SEATING AREA_HVAC LAYOUT ON RCP	01
M101	IN-DXN-FOOD MAHAL-SEATING AREA_HVAC LAYOUT ON PLAN	02
E101	IN-DXN-FOOD MAHAL-SEATING AREA_ELECTRICAL SLD	03
E201	IN-DXN-FOOD MAHAL-SEATING AREA_LOAD CALCULATION SHEET - SMDB COMMON	04
E201	IN-DXN-FOOD MAHAL-SEATING AREA_LOAD CALCULATION SHEET - UPS DB 01	05
E301	IN-DXN-FOOD MAHAL-SEATING AREA_POWER LAYOUT	06
E401	IN-DXN-FOOD MAHAL-SEATING AREA_LIGHTING LAYOUT	07
E501	IN-DXN-FOOD MAHAL-SEATING AREA_CCTV, DATA & PA LAYOUT	08
E601	IN-DXN-FOOD MAHAL-SEATING AREA_CONTAINMENT LAYOUT	09
F101	IN-DXN-FOOD MAHAL-SEATING AREA_FIRE ALARM LAYOUT	10
F201	IN-DXN-FOOD MAHAL-SEATING AREA_FIRE SPRINKLER LAYOUT	11
F202	IN-DXN-FOOD MAHAL-SEATING AREA_FIRE SPRINKLER PENDANT COVERAGE AREA LAYOUT	12
F301	IN-DXN-FOOD MAHAL-SEATING AREA_FIRE EXTINGUISHER LAYOUT	13
X101	IN-DXN-FOOD MAHAL-SEATING AREA_M&E RCP COORDINATION LAYOUT	14

ALL DIMENSIONS MUST BE CHECKED ON SITE
INFORM THE ENGINEER OF ANY DISCREPANCIES PRIOR TO CONSTRUCTION

NOTES:
IRRESPECTIVE OF THE DRAWING(S), IT IS THE CONTRACTOR'S OBLIGATION AND RESPONSIBILITY THAT SHALL BE EXECUTED AND COMPLETED IN ACCORDANCE TO THE SPECIFICATION, DRAWING(S) AS WELL AS REQUIREMENT. THE SAID DRAWING(S) SHALL NOT RELIEVE CONTRACTOR FROM ITS OBLIGATION UNDER THE CONTRACT AND IN PARTICULAR FROM ITS RESPONSIBILITY IN RELATION TO THE INSTALLATION MATERIALS AND WORKMANSHIP AND WHERE RELEVANT FROM A DUTY TO SEEK APPROVAL FROM THE COMPETENT AUTHORITY.

T00 09.12.24 ISSUED FOR TENDER	MB	RR
REV DATE DESCRIPTION	DSN	CHK



PROJECT
F03-07 DOMINOS, B.GALIYAN, IDLI
NOIDA INTERNATIONAL
AIRPORT LIMITED

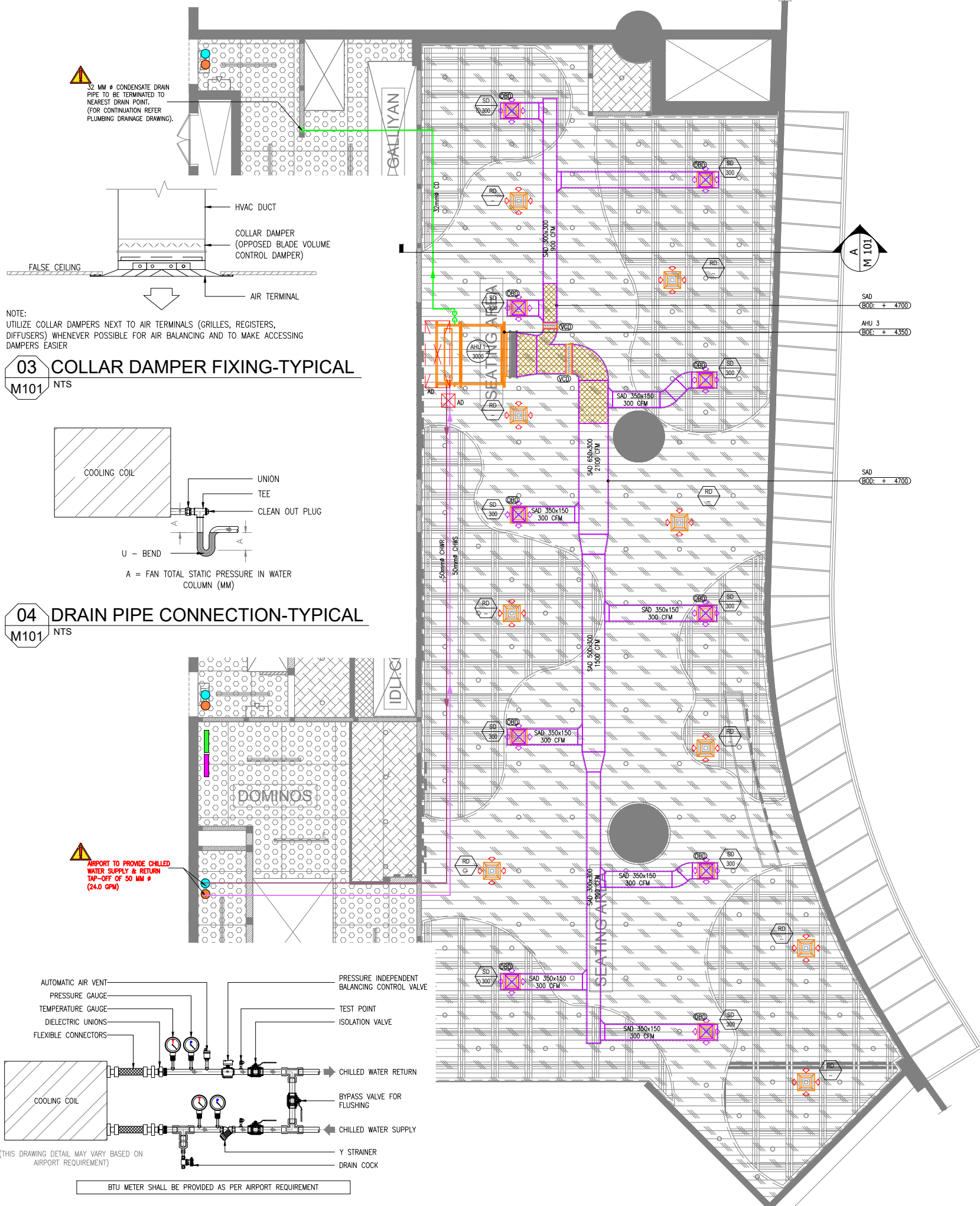
DRAWING TITLE
TITLE SHEET
SEATING AREA

SCALE NTS DATE 10.12.24 DESIGNMB A3 SHEET

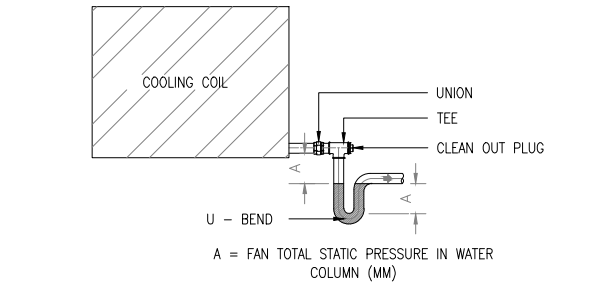
STATUS

TENDER

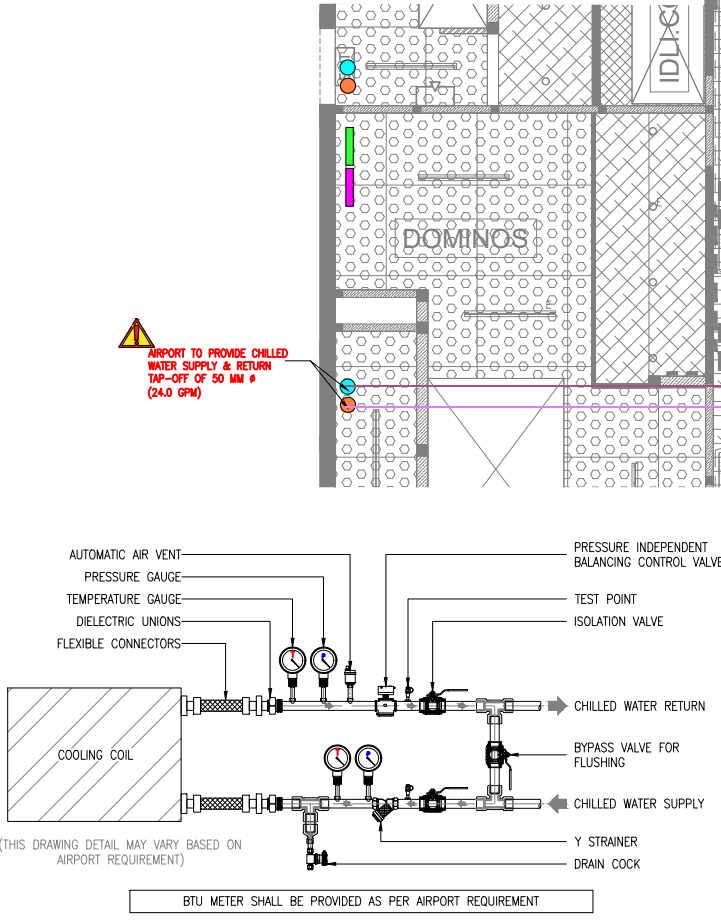
ORG	PROJECT NO	DRAWING TYPE	NUMBER	REV
TFS	XXXX GEN	G101 T00		



03 COLLAR DAMPER FIXING-TYPICAL
M101 NTS



04 DRAIN PIPE CONNECTION-TYPICAL
M101 NTS



05 AHU VALVE CONNECTION-TYPICAL
M101 NTS

01 HVAC LAYOUT ON RCP
M101 1:100

HVAC NOTES:

- ALL DIMENSIONS ARE IN MM UNLESS OTHERWISE SPECIFIED.
- THIS IS A SCHEMATIC/ CONCEPTUAL DRAWING ONLY TO ARTICULATE THE DESIGN INTENT. POST RECEIPT OF DETAILED SURVEY**, THE DRAWINGS WILL BE AMENDED/ DETAILED FURTHER.
- ALL HVAC EQUIPMENTS IS TO BE INTEGRATED WITH AIRPORT FIRE ALARM SYSTEM. FOR MORE DETAILS PLEASE CHECK FIRE ALARM DRAWING.
- TECHNICAL DATA SHEET FOR MS PIPE, INSULATION, VALVES, TEMPERATURE & PRESSURE GAUGE, GRILLES, DIFFUSERS, DAMPERS etc. NEEDS TO BE FACILITATED AND GET APPROVED BY AIRPORT AUTHORITY PRIOR TO THE INSTALLATION.
- ALL AIR TERMINALS SHOULD BE CONNECTED TO THE SUPPLY/EXTRACT AIR DUCTS THROUGH AN OPPOSED BLADE DAMPER (OBD).
- VOLUME CONTROL DAMPERS SHALL BE PROVIDED FOR ALL HOOD CONNECTIONS
- ALL HVAC SERVICE ELEVATIONS MARKED IN THE DRAWINGS ARE FROM 0.00 LVL.
- KITCHEN HOOD FIRE SUPPRESSION SYSTEM DESIGN, DETAILING AND INSTALLATION TO BE DONE BY SPECIALIST VENDOR. THE HVAC CONTRACTOR IS TO COORDINATE WITH THE SPECIALIST VENDOR TO ENSURE THAT THE SAME IS EXECUTED AT SITE.(ALL HOODS).

HVAC DUCTING LEGEND

SYMBOL	DESCRIPTION	SYMBOL	DESCRIPTION
	AIR HANDLING UNIT - HIGH STATIC		VOLUME CONTROL DAMPER
	SUPPLY AIR DUCT WITH 13mm THICK THERMAL INSULATION		CHILLED WATER SUPPLY LINE
	ACOUSTIC INSULATION 15mm THICK		CHILLED WATER RETURN LINE
	SUPPLY AIR SQUARE DIFFUSER		CONDENSATE DRAIN WATER LINE
	RETURN AIR SQUARE DIFFUSER		ACCESS DOOR

HVAC ABBREVIATIONS

AHU	AIR HANDLING UNIT - HIGH STATIC	VCD / OBD	VOLUME CONTROL DAMPER / OPPOSED BLADE DAMPER
SAD	SUPPLY AIR DUCT	CHWS	CHILLED WATER SUPPLY LINE
SD	SUPPLY DIFFUSER	CHWR	CHILLED WATER RETURN LINE
RD	RETURN DIFFUSER	CD	CONDENSATE DRAIN LINE

EQUIPMENT TYPE
 CFM AS INDICATED

TERMINAL TYPE
 CFM AS INDICATED

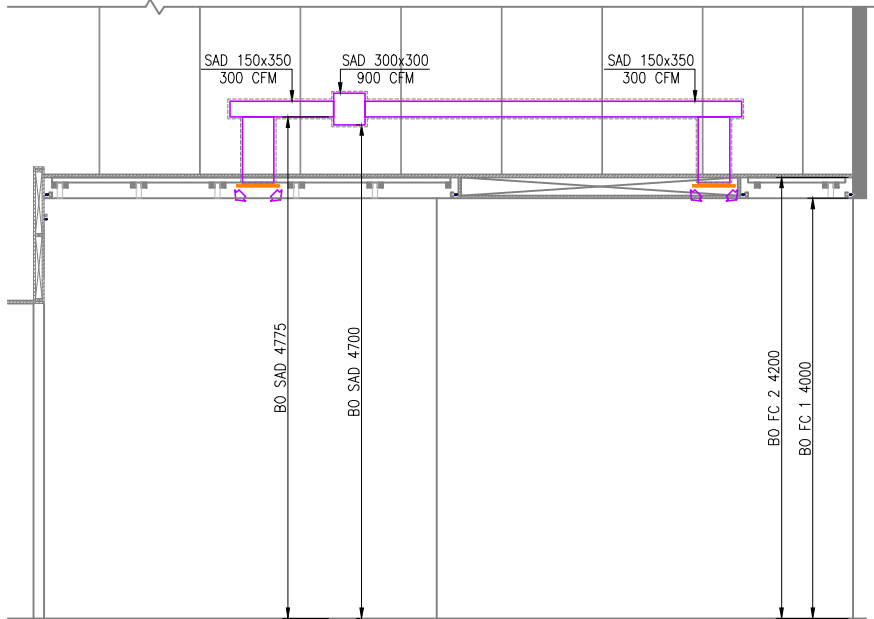
HVAC EQUIPMENT SCHEDULE

TAG	EQUIPMENT TYPE	COOLING CAPACITY (TR)	AIR FLOW (CFM)	WATER FLOW (GPM)
AHU 1	AIR HANDLING UNIT - HIGH STATIC	10.0	3000	24.0

AIR TERMINAL SCHEDULE - DIFFUSERS/GRILLE

TAG	SERVICE	NECK SIZE (mm)	PATTERN	MATERIAL	REMARKS
SD	SUPPLY AIR	300x300	4 WAY	ALUMINIUM	SQUARE CEILING DIFFUSER
RD	RETURN AIR	300x300	4 WAY	ALUMINIUM	SQUARE CEILING DIFFUSER

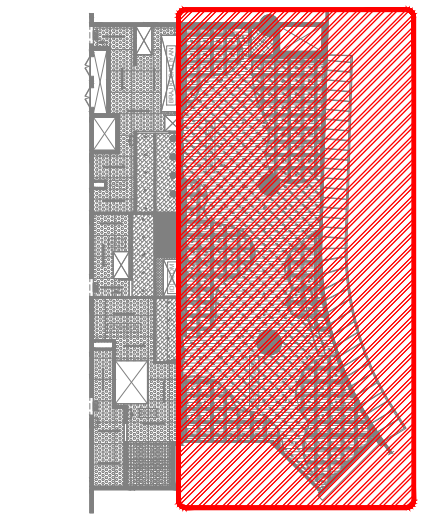
NOTE:
ALL AIR TERMINALS COLOUR & FINISH IS TO BE ADVISED BY ARCHITECT.



02 SECTION A
M101 1:75

ALL DIMENSIONS MUST BE CHECKED ON SITE INFORM THE ENGINEER OF ANY DISCREPANCIES PRIOR TO CONSTRUCTION

NOTES:
IRRESPECTIVE OF THE DRAWING(S), IT IS THE CONTRACTOR'S OBLIGATION AND RESPONSIBILITY THAT SHALL BE EXECUTED AND COMPLETED IN ACCORDANCE TO THE SPECIFICATION, DRAWING(S) AS WELL AS REQUIREMENT. THE SAID DRAWING(S) SHALL NOT RELIEVE CONTRACTOR FROM ITS OBLIGATION UNDER THE CONTRACT AND IN PARTICULAR FROM ITS RESPONSIBILITY IN RELATION TO THE INSTALLATION MATERIALS AND WORKMANSHIP AND WHERE RELEVANT FROM A DUTY TO SEEK APPROVAL FROM THE COMPETENT AUTHORITY.



06 KEY PLAN
NTS

T00	09.12.24	ISSUED FOR TENDER	MB	SF
REV DATE	DESCRIPTION		DSN	CHK



PROJECT
F03-07 DOMINOS, B.GALIYAN, IDLI NOIDA INTERNATIONAL AIRPORT LIMITED

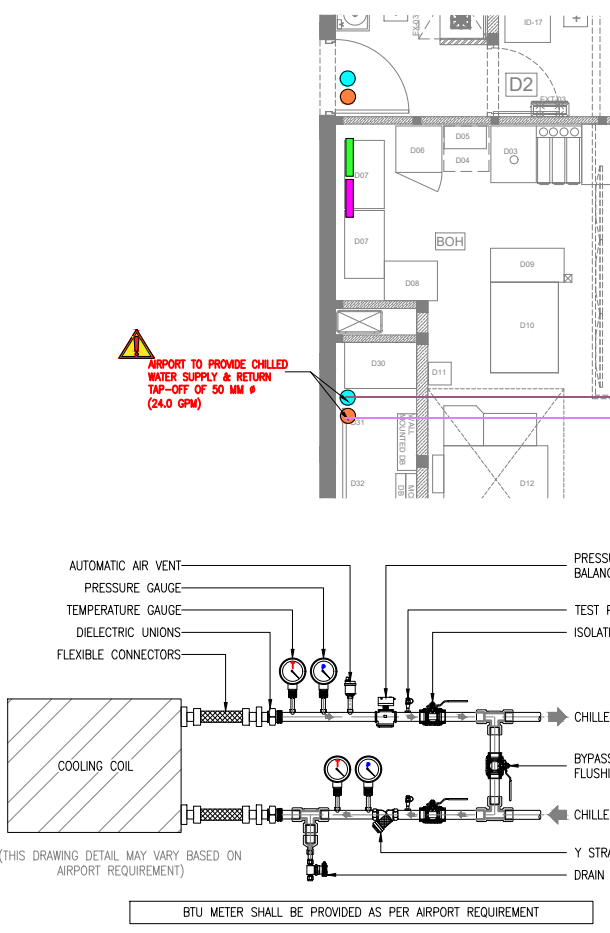
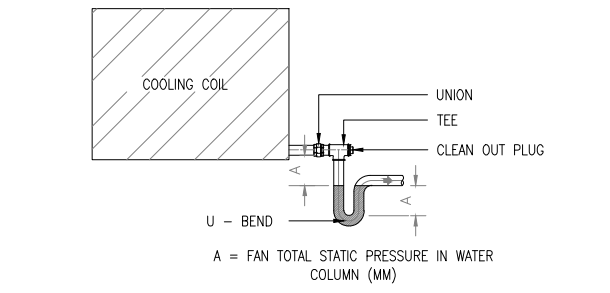
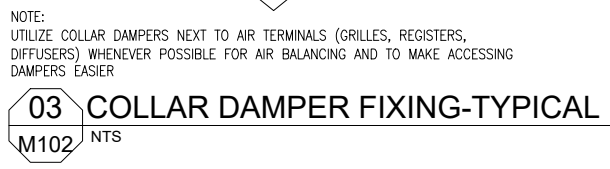
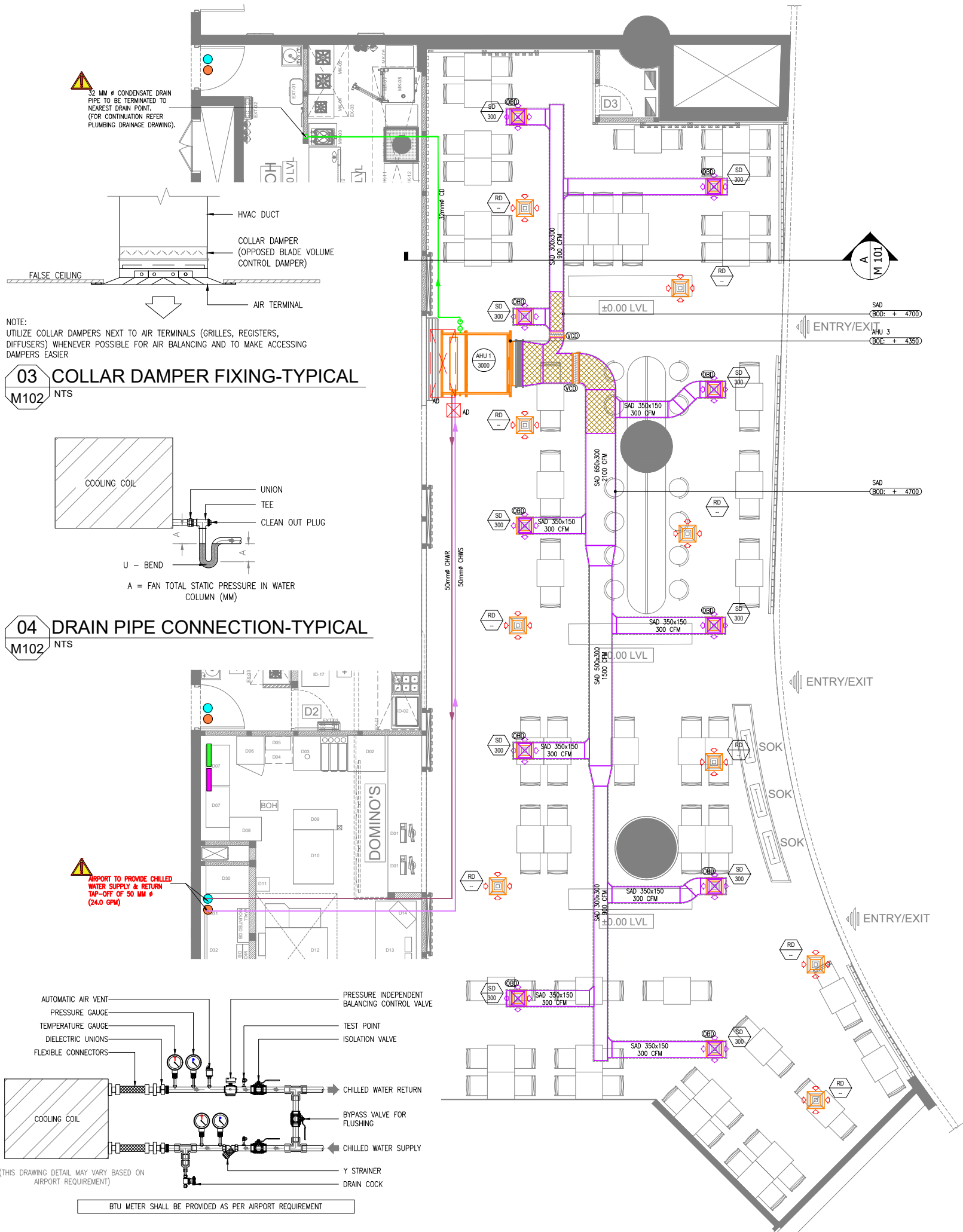
DRAWING TITLE
HVAC LAYOUT ON RCP SEATING AREA

SCALE 1:100 DATE 10.12.24 DESIGN MB A3 SHEET

STATUS

TENDER

ORG PROJECT NO DRAWING TYPE NUMBER REV
TFS XXXX HVAC M101T00



05 AHU VALVE CONNECTION-TYPICAL M102 NTS

01 HVAC LAYOUT ON PLAN M102 1:100

- HVAC NOTES:**
- ALL DIMENSIONS ARE IN MM UNLESS OTHERWISE SPECIFIED.
 - THIS IS A SCHEMATIC/ CONCEPTUAL DRAWING ONLY TO ARTICULATE THE DESIGN INTENT. POST RECEIPT OF DETAILED SURVEY**, THE DRAWINGS WILL BE AMENDED/ DETAILED FURTHER.
 - ALL HVAC EQUIPMENTS IS TO BE INTEGRATED WITH AIRPORT FIRE ALARM SYSTEM. FOR MORE DETAILS PLEASE CHECK FIRE ALARM DRAWING.
 - TECHNICAL DATA SHEET FOR MS PIPE, INSULATION, VALVES, TEMPERATURE & PRESSURE GAUGE, GRILLES, DIFFUSERS, DAMPERS etc. NEEDS TO BE FACILITATED AND GET APPROVED BY AIRPORT AUTHORITY PRIOR TO THE INSTALLATION.
 - ALL AIR TERMINALS SHOULD BE CONNECTED TO THE SUPPLY/EXTRACT AIR DUCTS THROUGH AN OPPOSED BLADE DAMPER (OBD).
 - VOLUME CONTROL DAMPERS SHALL BE PROVIDED FOR ALL HOOD CONNECTIONS
 - All HVAC SERVICE ELEVATIONS MARKED IN THE DRAWINGS ARE FROM 0.00 LVL.
 - KITCHEN HOOD FIRE SUPPRESSION SYSTEM DESIGN, DETAILING AND INSTALLATION TO BE DONE BY SPECIALIST VENDOR. THE HVAC CONTRACTOR IS TO COORDINATE WITH THE SPECIALIST VENDOR TO ENSURE THAT THE SAME IS EXECUTED AT SITE.(ALL HOODS).

HVAC DUCTING LEGEND

SYMBOL	DESCRIPTION	SYMBOL	DESCRIPTION
	AIR HANDLING UNIT - HIGH STATIC		VOLUME CONTROL DAMPER
	SUPPLY AIR DUCT WITH 13mm THICK THERMAL INSULATION		CHILLED WATER SUPPLY LINE
	ACOUSTIC INSULATION 15mm THICK		CHILLED WATER RETURN LINE
	SUPPLY AIR SQUARE DIFFUSER		CONDENSATE DRAIN WATER LINE
	RETURN AIR SQUARE DIFFUSER		ACCESS DOOR

HVAC ABBREVIATIONS

AHU	AIR HANDLING UNIT - HIGH STATIC	VCD / OBD	VOLUME CONTROL DAMPER / OPPOSED BLADE DAMPER
SAD	SUPPLY AIR DUCT	CHWS	CHILLED WATER SUPPLY LINE
SD	SUPPLY DIFFUSER	CHWR	CHILLED WATER RETURN LINE
RD	RETURN DIFFUSER	CD	CONDENSATE DRAIN LINE

FCU - EQUIPMENT TYPE AT - TERMINAL TYPE
 XX - CFM AS INDICATED XX - CFM AS INDICATED

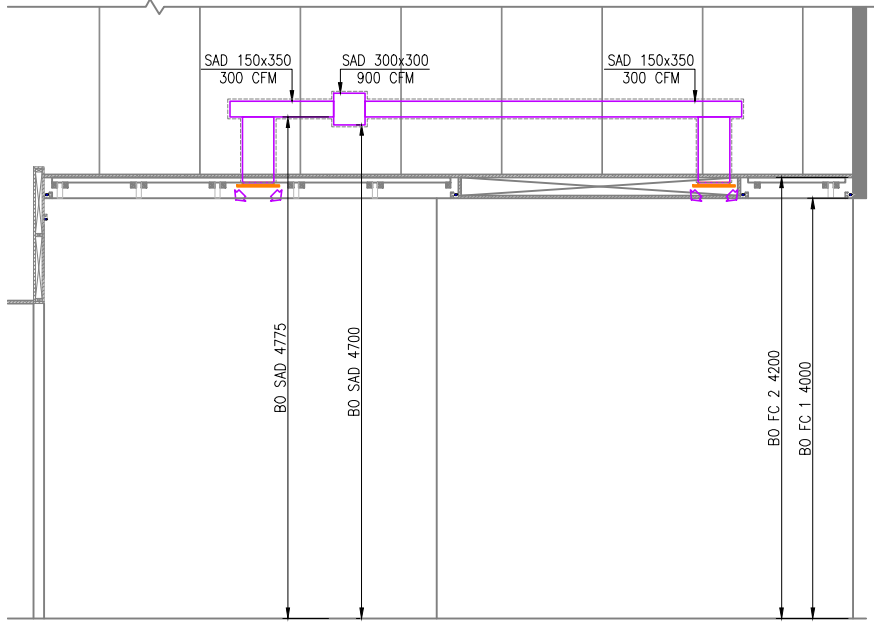
HVAC EQUIPMENT SCHEDULE

TAG	EQUIPMENT TYPE	COOLING CAPACITY (TR)	AIR FLOW (CFM)	WATER FLOW (GPM)
AHU 1	AIR HANDLING UNIT - HIGH STATIC	10.0	3000	24.0

AIR TERMINAL SCHEDULE - DIFFUSERS/GRILLE

TAG	SERVICE	NECK SIZE (mm)	PATTERN	MATERIAL	REMARKS
SD	SUPPLY AIR	300x300	4 WAY	ALUMINIUM	SQUARE CEILING DIFFUSER
RD	RETURN AIR	300x300	4 WAY	ALUMINIUM	SQUARE CEILING DIFFUSER

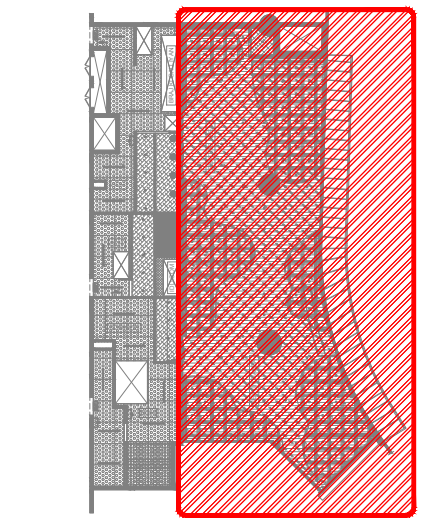
NOTE: ALL AIR TERMINALS COLOUR & FINISH IS TO BE ADVISED BY ARCHITECT.



02 SECTION A M102 1:75

ALL DIMENSIONS MUST BE CHECKED ON SITE INFORM THE ENGINEER OF ANY DISCREPANCIES PRIOR TO CONSTRUCTION

NOTES: IRRESPECTIVE OF THE DRAWING(S), IT IS THE CONTRACTOR'S OBLIGATION AND RESPONSIBILITY THAT SHALL BE EXECUTED AND COMPLETED IN ACCORDANCE TO THE SPECIFICATION, DRAWING(S) AS WELL AS REQUIREMENT. THE SAID DRAWING(S) SHALL NOT RELIEVE CONTRACTOR FROM ITS OBLIGATION UNDER THE CONTRACT AND IN PARTICULAR FROM ITS RESPONSIBILITY IN RELATION TO THE INSTALLATION MATERIALS AND WORKMANSHIP AND WHERE RELEVANT FROM A DUTY TO SEEK APPROVAL FROM THE COMPETENT AUTHORITY.



06 KEY PLAN NTS

T00	09.12.24	ISSUED FOR TENDER	MB	SF
REV DATE		DESCRIPTION		DSN CHK



PROJECT
F03-07 DOMINOS, B.GALIYAN, IDLI NOIDA INTERNATIONAL AIRPORT LIMITED

DRAWING TITLE
HVAC LAYOUT ON PLAN SEATING AREA

SCALE:1:100 DATE 10.12.24 DESIGN MB A3 SHEET

STATUS
TENDER
 ORG PROJECT NO DRAWING TYPE NUMBER REV
TFS XXXX HVAC M102T00

ALL DIMENSIONS MUST BE CHECKED ON SITE
INFORM THE ENGINEER OF ANY DISCREPANCIES PRIOR TO CONSTRUCTION

NOTES:
IRRESPECTIVE OF THE DRAWING(S), IT IS THE CONTRACTOR'S OBLIGATION AND RESPONSIBILITY THAT SHALL BE EXECUTED AND COMPLETED IN ACCORDANCE TO THE SPECIFICATION, DRAWING(S) AS WELL AS REQUIREMENT. THE SAID DRAWING(S) SHALL NOT RELIEVE CONTRACTOR FROM ITS OBLIGATION UNDER THE CONTRACT AND IN PARTICULAR FROM ITS RESPONSIBILITY IN RELATION TO THE INSTALLATION MATERIALS AND WORKMANSHIP AND WHERE RELEVANT FROM A DUTY TO SEEK APPROVAL FROM THE COMPETENT AUTHORITY.

ELECTRICAL SYSTEM LEGEND

	MCB (MINIATURE CIRCUIT BREAKER)	--
	RCBO (RESIDUAL CURRENT CIRCUIT BREAKER WITH OVER CURRENT & SHORT CIRCUIT PROTECTION)	--
	MULTI FUNCTION METER - CT TYPE	--
	EARTH CONNECTION	--
	VOLTMETER	--
	VOLTAGE SELECTOR SWITCH	--
	AMMETER	--
	R/Y/B INDICATOR LAMPS	--
	PUSH ON & OFF SWITCH	--
	DIRECT ONLINE STARTER (D.O.L.)	--
	STAR / DELTA STARTER	--
	ELECTRICAL CABLE	--

NOTES

- CONTRACTOR TO CHECK & CONFIRM ACTUAL SITE CONDITIONS PRIOR TO START DEVELOPING THEIR SHOP DRAWINGS & WORK AT SITE.
- LAMINATED SINGLE LINE DIAGRAM & LOAD CALCULATION SHEET TO BE PROVIDED INSIDE / NEAR TO EACH ELECTRICAL PANEL / DB'S.
- ALL CABLES & WIRES MUST BE FRLS/LSZH.
- GI CONDUITS WITH SUITABLE DIAMETER TO BE USED.
- POWER FOR HVAC EQUIPMENTS TO BE SHUT DOWN DURING FIRE SITUATION BY INTERFACING WITH FACP.

ABBREVIATIONS

- FCU - FAN COIL UNIT
- ESP - ELECTROSTATIC PRECIPITATOR

T00	10.12.24	ISSUED FOR TENDER	AK	AS
REV DATE	DESCRIPTION		DSN	CHK



PROJECT
F03-07 DOMINOS, B.GALIYAN, IDLI
NOIDA INTERNATIONAL
AIRPORT LIMITED

DRAWING TITLE
ELECTRICAL SLD
SEATING AREA
SMDB-COM & UPSDB-01

SCALE:1:100 DATE:10.12.24 DESIGN:AK A3 SHEET

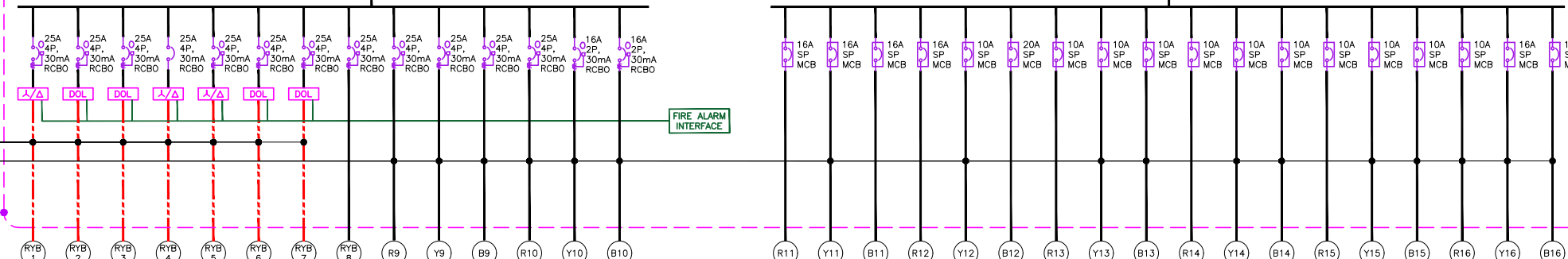
STATUS
TENDER

ORG PROJECT NO DRAWING TYPE NUMBER REV
TFS XXXX ELEC E101 T00

SMDB-COM	
16 WAY TPN SMDB	
CONN. LOAD (kW)	31.73
DEMAND LOAD (kW)	31.73

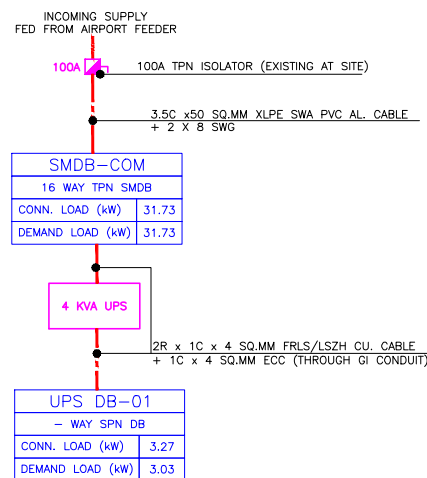
EARTHING
2Nos 25 X 3mm G.I.STRIP BARE
FOR MAIN PANEL EARTHING
1C X 16sq.mm CU.PVC INSULATED
FOR UPS EARTHING

100A TPN, 415V, 50Hz ELECTROLYTIC AL. BUS BAR

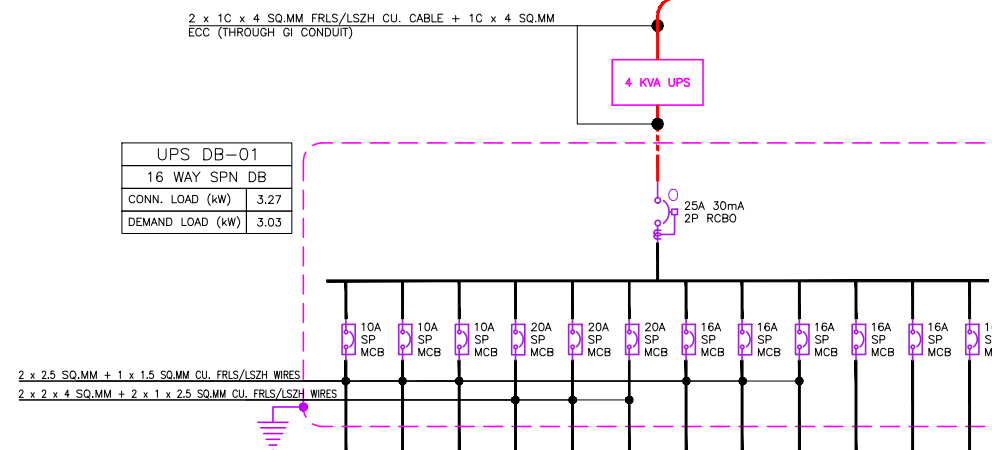


CL (kW)	FEEDER/EQUIPMENT DESCRIPTION	CL (kW)	FEEDER/EQUIPMENT DESCRIPTION
4.00	KITCHEN EXHAUST AIR FAN -01 (BRAJ KI GALIYAN)	0.50	SPARE
2.20	KITCHEN EXHAUST AIR FAN-02 (BRAJ KI GALIYAN)	0.50	AIR CURTAIN (DILCOM)
2.20	FRESH AIR FAN -01 (BRAJ KI GALIYAN)	0.38	LED STRIP + RESSESSED DOWN LIGHT + SIGNAGE
4.00	FRESH AIR FAN - 02 (BRAJ KI GALIYAN)	0.25	SPARE
4.00	KITCHEN EXHAUST AIR FAN (DILCOM)	0.25	LED STRIP + RESSESSED DOWN LIGHT
3.00	FRESH AIR FAN (DILCOM)	0.15	RESSESSED DOWN LIGHT
3.00	AHU (SEATING AREA)	0.27	LED STRIP + RESSESSED DOWN LIGHT
-	SPARE	0.30	LED STRIP + RESSESSED DOWN LIGHT
0.25	ESP-01 (BRAJ KI GALIYAN)	0.30	BATTEN LIGHT +RESSESSED DOWN LIGHT + SIGNAGE
0.50	FCU - 01 (BRAJ KI GALIYAN)	0.32	LED STRIP + RESSESSED DOWN LIGHT
1.00	FCU - 01 (BRAJ KI GALIYAN)	3.27	UPS DB-01
0.25	ESP-01 (BRAJ KI GALIYAN)	0.50	AIR CURTAIN (BRAJ KI GALIYAN)
0.25	ESP (DILCOM)	0.19	LED STRIP + RESSESSED DOWN LIGHT
0.65	FCU (DILCOM)		

HVAC EQUIPMENTS AND COMMON AREA



UPS DB-01	
16 WAY SPN DB	
CONN. LOAD (kW)	3.27
DEMAND LOAD (kW)	3.03



CL (kW)	EQUIPMENT DESCRIPTION	CL (kW)	EQUIPMENT DESCRIPTION
0.08	EXIT LIGHT + BATTEN LIGHT + RESSESSED DOWN LIGHT (BRAJ KI GALIYAN)	0.60	POS MACHINE (DILCOM)
0.05	EXIT LIGHT + BATTEN LIGHT + RESSESSED DOWN LIGHT (DILCOM)	0.60	POS MACHINE (BRAJ KI GALIYAN)
0.14	EXIT LIGHT + RESSESSED DOWN LIGHT (COMMON AREA)	0.60	SOK-3NOS
0.60	POS MACHINE (DILCOM)	0.10	WFI (DILCOM)
0.60	POS MACHINE (BRAJ KI GALIYAN)	0.10	WFI (BRAJ KI GALIYAN)
0.60	SOK-3NOS	1.00	IDF BACK
0.10	WFI (DILCOM)	-	SPARE
0.10	WFI (BRAJ KI GALIYAN)	-	SPARE
1.00	IDF BACK	-	SPARE
-	SPARE		
-	SPARE		
-	SPARE		

PROJECT / BUILDING NAME :		FOOD MAHAL (HVAC EQUIPMENTS AND COMMON AREA)																
FED FROM :		AIRPORT DISTRIBUTION FEEDER (EXISTING 100A ISOLATOR)																
DISTRIBUTION BOARD / REF :		SMDB-COM										DB AREA REFERENCE :						
MAIN INCOMING CABLE :		3.5C x 50 SQ.MM XLPE/SWA/PVC/ALAR CABLE + 2 x 8 SWG																
DOCUMENT NO. :																		
MAIN INCOMER RATING (A)	SUB INCOMER RATING (A)	CIRCUIT ID	BREAKER TYPE	BREAKER RATING (A)	WIRE SIZE (PH & N) (mm ²)	WIRE SIZE (EARTH) (mm ²)	EQUIP. TAG	CIRCUIT NAME / POINT REFERENCE	NUMBER OF POINTS	CONN. LOAD / POINT (W)	DIVERSITY TYPE	DIVERSITY FACTOR	R	Y	B	TOTAL CONN. LOAD (kW)	TOTAL DIVERSITY LOAD (kW)	REMARKS
100A 4P MCCB + ELR TRIP		RYB1	4P RCBO	25	4.0	10 SWG	-	KITCHEN EXHAUST AIR FAN -01 (BRAJ KI GALIYAN)	1	4000	PWR	1	1.33	1.33	1.33	4.00	4.00	TO BE INTERFACED WITH FA SYSTEM
		RYB2	4P RCBO	25	4.0	10 SWG	-	KITCHEN EXHAUST AIR FAN-02 (BRAJ KI GALIYAN)	1	2200	PWR	1	0.73	0.73	0.73	2.20	2.20	TO BE INTERFACED WITH FA SYSTEM
		RYB3	4P RCBO	25	4.0	10 SWG	-	FRESH AIR FAN -01 (BRAJ KI GALIYAN)	1	2200	PWR	1	0.73	0.73	0.73	2.20	2.20	TO BE INTERFACED WITH FA SYSTEM
		RYB4	4P RCBO	25	4.0	10 SWG	-	FRESH AIR FAN - 02 (BRAJ KI GALIYAN)	1	4000	PWR	1	1.33	1.33	1.33	4.00	4.00	TO BE INTERFACED WITH FA SYSTEM
		RYB5	4P RCBO	25	4.0	10 SWG	-	KITCHEN EXHAUST AIR FAN (IDLI.COM)	1	4000	PWR	1	1.33	1.33	1.33	4.00	4.00	TO BE INTERFACED WITH FA SYSTEM
		RYB6	4P RCBO	25	4.0	10 SWG	-	FRESH AIR FAN (IDLI.COM)	1	3000	PWR	1	1.00	1.00	1.00	3.00	3.00	TO BE INTERFACED WITH FA SYSTEM
		RYB7	4P RCBO	25	4.0	10 SWG	-	AHU (SEATING AREA)	1	3000	PWR	1	1.00	1.00	1.00	3.00	3.00	TO BE INTERFACED WITH FA SYSTEM
		RYB8	4P RCBO	25				SPARE								0.00	0.00	
		R9	2P RCBO	16	2.5	1.5	-	ESP-01 (BRAJ KI GALIYAN)	1	250	PWR	1	0.25			0.25	0.25	-
		Y9	2P RCBO	16	2.5	1.5	-	FCU - 01 (BRAJ KI GALIYAN)	1	500	PWR	1		0.50		0.50	0.50	-
	B9	2P RCBO	16	2.5	1.5	-	FCU - 01 (BRAJ KI GALIYAN)	1	1000	PWR	1			1.00	1.00	1.00	-	
	R10	2P RCBO	16	2.5	1.5	-	ESP-01 (BRAJ KI GALIYAN)	1	250	PWR	1	0.25			0.25	0.25	-	
	Y10	2P RCBO	16	2.5	1.5	-	ESP (DILI.COM)	1	250	PWR	1		0.25		0.25	0.25	-	
	B10	2P RCBO	16	2.5	1.5	-	FCU (DILI.COM)	1	650	PWR	1			0.65	0.65	0.65	-	
32A 30 mA 4P RCBO		R11	SP MCB	16	-	-	-	SPARE			PWR		0.00			0.00	0.00	-
		Y11	SP MCB	16	2.5	1.5	-	AIR CURTAIN (DILI.COM)	1	500	PWR	1		0.50		0.50	0.50	-
		B11	SP MCB	16	2.5	1.5	-	SPARE							0.00	0.00	0.00	-
		R12	SP MCB	16	-	-	-	SPARE			PWR		0.00			0.00	0.00	-
		Y12	SP MCB	10	2.5	1.5	-	LED STRIP + RESSED DOWN LIGHT+ SIGNAGE	20	376	LTG	1		0.38		0.38	0.38	-
		B12	SP MCB	10	-	-	-	SPARE							0.00	0.00	0.00	-
		R13	SP MCB	10	-	-	-	SPARE								0.00	0.00	-
		Y13	SP MCB	10	2.5	1.5	-	LED STRIP + RESSED DOWN LIGHT	14	251	LTG	1		0.25		0.25	0.25	-
		B13	SP MCB	10	2.5	1.5	-	RESSED DOWN LIGHT	22	154	LTG	1			0.15	0.15	0.15	-
		R14	SP MCB	10	-	-	-	SPARE								0.00	0.00	-
		Y14	SP MCB	10	2.5	1.5	-	LED STRIP + RESSED DOWN LIGHT	22	267	LTG	1		0.27		0.27	0.27	-
		B14	SP MCB	10	2.5	1.5	-	LED STRIP + RESSED DOWN LIGHT	14	193	LTG	1			0.19	0.19	0.19	-
		R15	SP MCB	10	-	-	-	SPARE					0.00			0.00	0.00	-
		Y15	SP MCB	10	2.5	1.5	-	RESSED DOWN LIGHT + SIGNAGE	1	300	LTG	1		0.30		0.30	0.30	-
		B15	SP MCB	10	2.5	1.5	-	LED STRIP + RESSED DOWN LIGHT	18	319	LTG	1			0.32	0.32	0.32	-
		R16	SP MCB	25	2.5	1.5	-	UPS DB-01	1	3267	PWR	1	3.27			3.27	3.27	-
	Y16	SP MCB	16	2.5	1.5	-	AIR CURTAIN (BRAJ KI GALIYAN)	1	500	PWR	1		0.50		0.50	0.50	-	
	B16	SP MCB	10	2.5	1.5	-	LED STRIP + RESSED DOWN LIGHT	15	298	LTG	1			0.30	0.30	0.30	-	
												SMDB-COM	11.23	10.41	10.08	31.73	31.73	
													TCL - R	TCL - Y	TCL - B	TCL	TDL	

ABBREVIATIONS : PWR - POWER, LTG - LIGHTING, UPS - UNINTERRUPTIBLE POWER SUPPLY, A - AMPS, W - WATTS, kW - KILOWATT, 1R - ONE RUN, 4C - FOUR CORE, 2C - TWO CORE, CU. - COPPER, ECC - EARTH CONTINUITY CONDUCTOR, CONN. - CONNECTED

TOTAL CONNECTED LOAD	31.73	SMDB-COM+ UPS DB-01	TCL (kW)
TOTAL CONNECTED LOAD	35.25	SMDB-COM+ UPS DB-01	TCL (kVA)
TOTAL DEMAND LOAD	31.73	SMDB-COM+ UPS DB-01	TDL (kW)
TOTAL DEMAND LOAD	35.25	SMDB-COM+ UPS DB-01	TDL (kVA)
AVERAGE DIVERSITY FACTOR	100%	SMDB-COM+ UPS DB-01	%



PROJECT
F03-07 DOMINOS, B.GALIYAN, IDLI
NOIDA INTERNATIONAL
AIRPORT LIMITED

DRAWING TITLE
LOAD CALCULATION SHEET
SEATING AREA
SMDB-COM

SCALE NTS DATE 10.12.24 DESIGN AK A3 SHEET

STATUS

TENDER

ORG PROJECT NO DRAWING TYPE NUMBER REV

TFS XXXX ELEC E201 T00

FED FROM :		SMDB-COM																
DISTRIBUTION BOARD / REF :		UPS DB-1																
MAIN INCOMING CABLE :		2C x 4 SQ.MM XLPE CU. CABLE + 1C x 4 SQ.MM ECC																
		DB AREA REFERENCE :																
		DOCUMENT NO. :																
MAIN INCOMER RATING (A)	CIRCUIT ID	BREAKER TYPE	BREAKER RATING (A)	WIRE SIZE (PH & N) (mm ²)	WIRE SIZE (EARTH) (mm ²)	EQUIP. TAG	CIRCUIT NAME / POINT REFERENCE	NUMBER OF POINTS	CONN. LOAD / POINT (W)	DIVERSITY TYPE	DIVERSITY FACTOR	R	Y	B	TOTAL CONN. LOAD (kW)	TOTAL DIVERSITY LOAD (kW)	REMARKS	
25A 30 mA 2P RCBO	C1	SP MCB	10	2.5	1.5	-	EXT LIGHT + BATTEN LIGHT + RESSED DOWN LIGHT (BRAJ KI GALIYAN)	4	81	LTG	1	0.08			0.08	0.08	-	
	C2	SP MCB	10	2.5	1.5	-	EXT LIGHT + BATTEN LIGHT + RESSED DOWN LIGHT (IDLI.COM)	3	50	LTG	1	0.05			0.05	0.05	-	
	C3	SP MCB	10	2.5	1.5	-	EXT LIGHT + RESSED DOWN LIGHT (COMMON AREA)	17	136	LTG	1	0.14			0.14	0.14	-	
	C4	SP MCB	20	2 x 4	2 x 2.5	-	POS MACHINE (IDLI.COM)	1	600	PWR	0.8	0.60			0.60	0.48	RING CKT	
	C5	SP MCB	20	2 x 4	2 x 2.5	-	POS MACHINE (BRAJ KI GALIYAN)	1	600	PWR	0.8	0.60			0.60	0.48	RING CKT	
	C6	SP MCB	20	2 x 4	2 x 2.5	-	SOK	3	200	PWR	1	0.60			0.60	0.60	RING CKT	
	C7	SP MCB	16	2.5	1.5	-	WIFI (IDLI.COM)	1	100	PWR	1	0.10			0.10	0.10	-	
	C8	SP MCB	16	2.5	1.5	-	WIFI (BRAJ KI GALIYAN)	1	100	PWR	1	0.10			0.10	0.10	-	
	C9	SP MCB	16	2.5	1.5	-	IDF RACK	1	1000	PWR	1	1.00			1.00	1.00	-	
	C10	SP MCB	16	-	-	-	SPARE					0.00			0.00	0.00	-	
	C11	SP MCB	16	-	-	-	SPARE					0.00			0.00	0.00	-	
	C12	SP MCB	16	-	-	-	SPARE					0.00			0.00	0.00	-	
												UPS DB-1	3.27	0.00	0.00	3.27	3.03	
												TCL - R	TCL - Y	TCL - B	TCL	TDL		

ABBREVIATIONS : PWR - POWER, LTG - LIGHTING, UPS - UNINTERRUPTIBLE POWER SUPPLY, A - AMPS, W - WATTS, kW - KILOWATT, 1R - ONE RUN, 4C - FOUR CORE, 2C - TWO CORE, CU. - COPPER, ECC - EARTH CONTINUITY CONDUCTOR, CONN. - CONNECTED

TOTAL CONNECTED LOAD	3.27	UPS DB-1	TCL (kW)
TOTAL CONNECTED LOAD	3.63	UPS DB-1	TCL (kVA)
TOTAL DEMAND LOAD	3.03	UPS DB-1	TDL (kW)
TOTAL DEMAND LOAD	3.36	UPS DB-1	TDL (kVA)
AVERAGE DIVERSITY FACTOR	93%	UPS DB-1	%



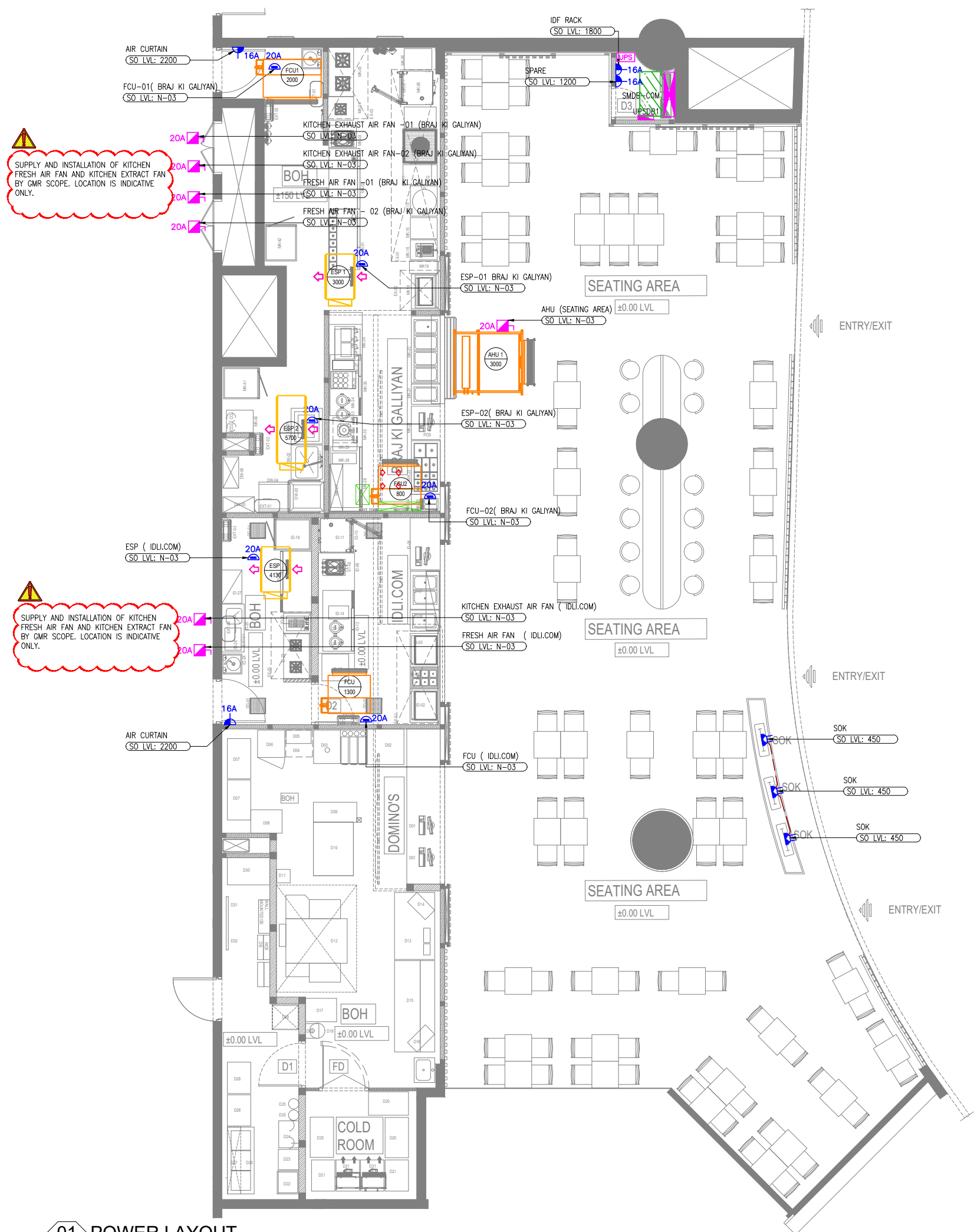
PROJECT
F03-07 DOMINOS, B.GALIYAN, IDLI
NOIDA INTERNATIONAL
AIRPORT LIMITED

DRAWING TITLE
LOAD CALCULATION SHEET
SEATING AREA
UPS DB-01

SCALE NTS DATE 10.12.24 DESIGN AK A3 SHEET

STATUS
TENDER

ORG PROJECT NO DRAWING TYPE NUMBER REV
TFS XXXX ELEC E202 T00



01 POWER LAYOUT
E301 1:100

ELECTRICAL SYSTEM LEGEND		
SYMBOL	DESCRIPTION	QTY
	13A DUAL SWITCHED SOCKET OUTLET (UPS POWER)	03
	16A SINGLE SWITCHED SOCKET OUTLET	01
	UNSWITCHED FUSED CONNECTION OUTLET WITH-OUT NEON INDICATOR	06
	THREE PHASE ISOLATOR	07
	SUB MAIN DISTRIBUTION BOARD (SMDB)	--
	UPS DISTRIBUTION BOARD (SINGLE PHASE)	--
	DISTRIBUTION BOARD (THREE PHASE)	--
	UNINTERRUPTIBLE POWER SUPPLY (IN-BUILT BATTERY)	--
	ELECTRICAL POWER CIRCUIT	--

NOTES

- ALL DIMENSIONS & LEVEL ARE IN "MM" OR OTHERWISE MENTIONED.
- SOCKETS PROVIDED NEAR WET AREAS SHALL BE AT LEAST 1.2 MTR AWAY FROM WATER SOURCE AND IP66 RATED.
- A DISTANCE OF MINIMUM 300MM TO BE MAINTAINED BETWEEN POWER AND COMMUNICATION CABLE.
- ALL CIRCUITS IN DB ARE TO BE TAGGED. MCB/MCCB IS TO BE LABELED AND THE SCHEMATIC IS TO BE UPDATED ACCORDING TO WHAT IS DISPLAYED IN DB.
- SOCKET ELEVATIONS SHOWN IN THE DRAWING IS DESIGN INDICATIVE. THE CONTRACTOR NEEDS TO FIELD VERIFY AT THE SITE AND INTEGRATE IT TO MATCH WITH THE ID DESIGN FOR THE FINAL LOCATION & ELEVATIONS.
- SHUTTER TYPE SWITCH SOCKET OUTLET ON SUITABLE MS BOX SHALL BE USED WITH PROPER EARTHING.
- ALL ELECTRICAL EQUIPMENT SHALL BE PROPER EARTHED AND CONNECTED TO MAIN EARTHING WITH SUITABLY SIZED EARTHING CONDUCTOR.
- ALL SWITCH / SOCKET / DATA OUTLET PLATE COLOUR / FINISH TO BE MATCH WITH ARCHITECTURAL LAYOUT & ARCHITECT APPROVAL TO BE TAKEN PRIOR TO PRODUCT PROCUREMENT.
- ALL MCCB/ISOLATOR PANEL SHALL BE MADE ACCESSIBLE AT ALL TIME.
- N-01: SOCKET TO BE FIXED WITH ON CEILING.
- N-02: SOCKET FIXING TO BE COORDINATE WITH FURNITURE
- N-03: SOCKET TO BE FIXED WITH ABOVE CEILING.

ALL DIMENSIONS MUST BE CHECKED ON SITE INFORM THE ENGINEER OF ANY DISCREPANCIES PRIOR TO CONSTRUCTION

NOTES:
IRRESPECTIVE OF THE DRAWING(S), IT IS THE CONTRACTOR'S OBLIGATION AND RESPONSIBILITY THAT SHALL BE EXECUTED AND COMPLETED IN ACCORDANCE TO THE SPECIFICATION, DRAWING(S) AS WELL AS REQUIREMENT. THE SAID DRAWING(S) SHALL NOT RELIEVE CONTRACTOR FROM ITS OBLIGATION UNDER THE CONTRACT AND IN PARTICULAR FROM ITS RESPONSIBILITY IN RELATION TO THE INSTALLATION MATERIALS AND WORKMANSHIP AND WHERE RELEVANT FROM A DUTY TO SEEK APPROVAL FROM THE COMPETENT AUTHORITY.



02 KEY PLAN
NTS

T00 10.12.24 ISSUED FOR TENDER AK AS
REV DATE DESCRIPTION DSN CHK



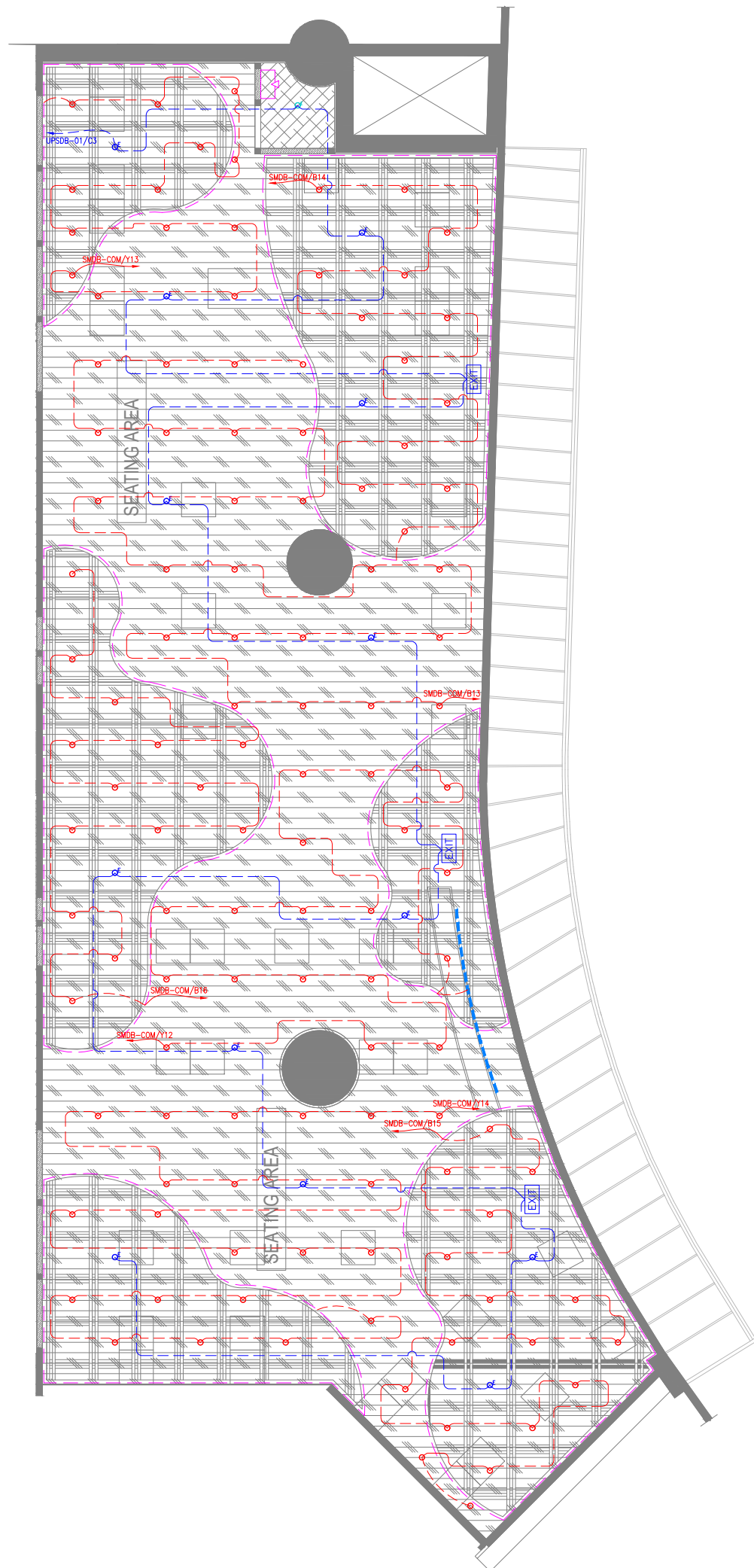
PROJECT
F03-07 DOMINOS, B.GALIYAN, IDLI NOIDA INTERNATIONAL AIRPORT LIMITED

DRAWING TITLE
POWER LAYOUT SEATING AREA

SCALE 1:100 DATE 10.12.24 DESIGN AK A3 SHEET

STATUS
TENDER

ORG PROJECT NO DRAWING TYPE NUMBER REV
TFS XXXX ELEC E301 T00



LIGHTING LEGEND				
SYMBOL	DESCRIPTION	CODE	WATTS	QTY
○	RECESSED DOWN LIGHT	LT3	6.5	119
♂	EMERGENCY RECESSED DOWN LIGHT	--	6.5	13
♂	EMERGENCY RECESSED DOWN LIGHT	--	21	01
---	20MM LED STRIP LIGHT-01	--	08/M	--
EXIT	EXIT LIGHT WITH BATTERY BACKUP (WALL / CEILING MOUNTED)	--	08	03
---	INDICATIVE SIGNAGE	--	100	01
□	LIGHTING CONTROL SWITCH POINT			01
---	LIGHTING NORMAL CIRCUIT			--
---	LIGHTING EMERGENCY CIRCUIT			--

NOTES

- ALL DIMENSIONS & LEVEL ARE IN "MM" OR OTHERWISE MENTIONED.
- FINAL LOCATION OF LIGHT FIXTURES TO BE FOLLOWED AS PER ARCHITECT LAYOUT.
- EXISTING CEILING LIGHT TO BE RETAINED AND RELOCATED AS PER SITE CONDITIONS.
- REFER ARCHITECTURAL DETAIL LAYOUT FOR DECORATIVE TYPE LIGHT FIXTURES.
- ALL CONDUITING TO BE EMT OR AS PER AIRPORT NORMS.
- ALL SWITCH / SOCKET / DATA OUTLET PLATE COLOUR / FINISH TO BE MATCH WITH ARCHITECTURAL LAYOUT & ARCHITECT APPROVAL TO BE TAKEN PRIOR TO PRODUCT PROCUREMENT.
- FINAL LIGHTING LOCATION, COORDINATE WITH ARCHITECT DRAWING.

ALL DIMENSIONS MUST BE CHECKED ON SITE
INFORM THE ENGINEER OF ANY DISCREPANCIES PRIOR TO CONSTRUCTION

NOTES:
IRRESPECTIVE OF THE DRAWING(S), IT IS THE CONTRACTOR'S OBLIGATION AND RESPONSIBILITY THAT SHALL BE EXECUTED AND COMPLETED IN ACCORDANCE TO THE SPECIFICATION, DRAWING(S) AS WELL AS REQUIREMENT. THE SAID DRAWING(S) SHALL NOT RELIEVE CONTRACTOR FROM ITS OBLIGATION UNDER THE CONTRACT AND IN PARTICULAR FROM ITS RESPONSIBILITY IN RELATION TO THE INSTALLATION MATERIALS AND WORKMANSHIP AND WHERE RELEVANT FROM A DUTY TO SEEK APPROVAL FROM THE COMPETENT AUTHORITY.



02 KEY PLAN
NTS

01 LIGHTING LAYOUT
E401 1:100

T00	10.12.24	ISSUED FOR TENDER	TT	AS
REV	DATE	DESCRIPTION	DSN	CHK



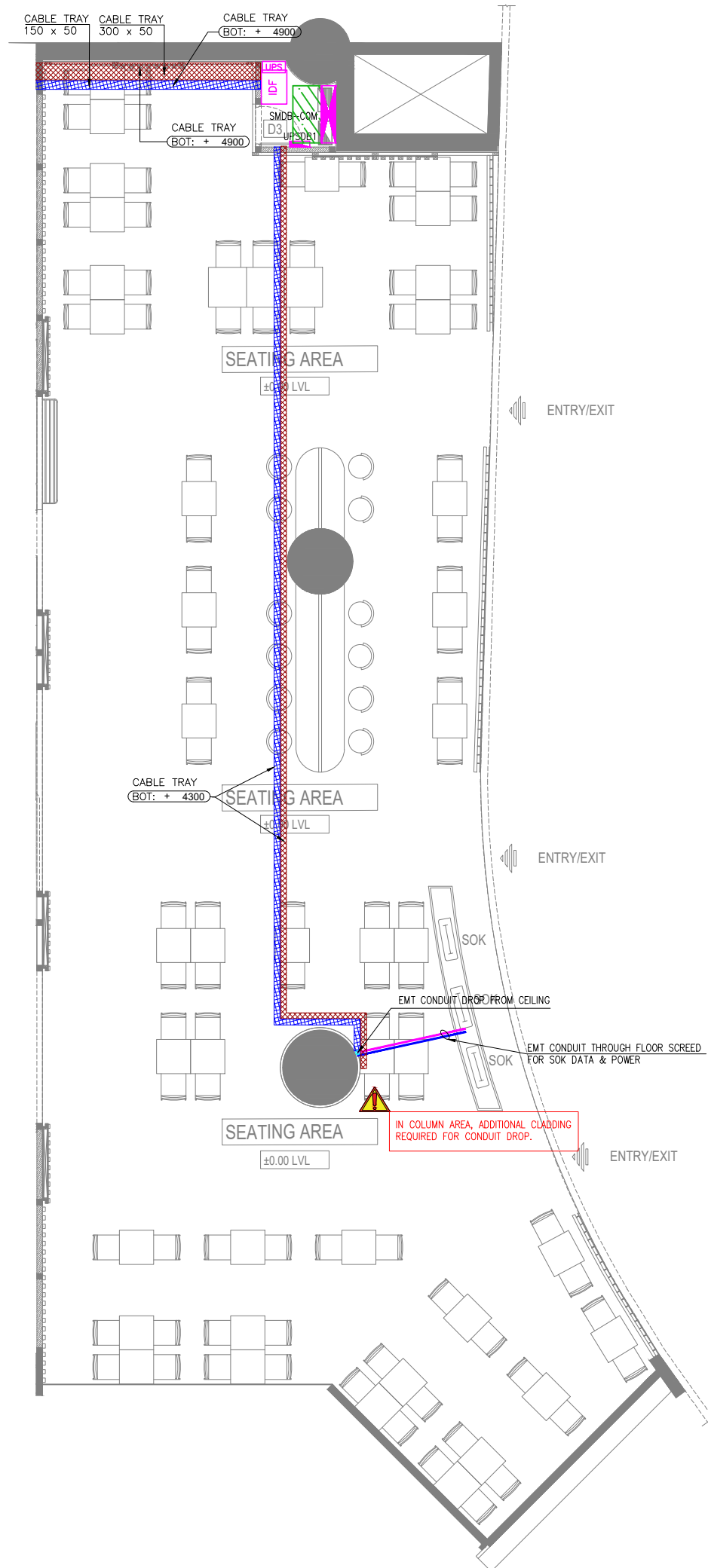
PROJECT
F03-07 DOMINOS, B.GALIYAN, IDLI
NOIDA INTERNATIONAL
AIRPORT LIMITED

DRAWING TITLE
LIGHTING LAYOUT
SEATING AREA

SCALE 1:100 DATE 10.12.24 DESIGN TT A3 SHEET

STATUS
TENDER

ORG	PROJECT NO	DRAWING TYPE	NUMBER	REV
TFS	XXXX	ELEC	E401	T00



RACEWAY / CONTAINMENT LEGEND		
SYMBOL	DESCRIPTION	QTY
	CABLE TRAY (LIGHTING & POWER)	--
	CABLE TRAY(ELV)	--
	EMT CONDUIT THROUGH FLOOR SCREED FOR ELECTRICAL	--
	EMT CONDUIT THROUGH FLOOR SCREED FOR ELV	--
	LIGHTING CONTROL SWITCH POINT	--
	CONDUIT DROP	02
	FLOOR JUNCTION BOX	--
	DBs - DISTRIBUTION BOARD	05
	SUB MAIN DISTRIBUTION BOARD (SMDBs)	01
	RUBBER MAT ON FLOOR	01

NOTES

- ALL DIMENSIONS & LEVEL ARE IN "MM" OR OTHERWISE MENTIONED.
- EMT CONDUITS OF SUITABLE DIAMETER TO BE USED FOR ALL CCTV CABLING BETWEEN CAMERA TO DVR.
- HEAVY DUTY PVC CONDUITS OF SUITABLE DIAMETER TO BE USED FOR ALL LIGHTING & POWER CABLING BETWEEN LIGHT / POWER POINT TO DB.
- CONTRACTOR TO FOLLOW AIRPORT MEP GUIDELINES FOR MATERIAL MASE & SPECIFICATION.
- CABLE TRAY & TRUNKING ROUTES ARE INDICATIVE ONLY, TO BE COORDINATED WITH OTHER SERVICES.
- THE CONTRACTOR IS EXPECTED TO DEVELOP THE ACTUAL ROUTING DETAILS OF THESE AT SITE BASED ON SITE CONDITION. IT IS IMPORTANT TO ENSURE THAT THESE SERVICES ARE NOT VISIBLE TO CUSTOMERS, CAN BE ACCESSED IN FUTURE FOR MAINTENANCE AND ARE NOT DETRIMENTAL TO THE UNIT.

ALL DIMENSIONS MUST BE CHECKED ON SITE INFORM THE ENGINEER OF ANY DISCREPANCIES PRIOR TO CONSTRUCTION

NOTES:
IRRESPECTIVE OF THE DRAWING(S), IT IS THE CONTRACTOR'S OBLIGATION AND RESPONSIBILITY THAT SHALL BE EXECUTED AND COMPLETED IN ACCORDANCE TO THE SPECIFICATION, DRAWING(S) AS WELL AS REQUIREMENT. THE SAID DRAWING(S) SHALL NOT RELIEVE CONTRACTOR FROM ITS OBLIGATION UNDER THE CONTRACT AND IN PARTICULAR FROM ITS RESPONSIBILITY IN RELATION TO THE INSTALLATION MATERIALS AND WORKMANSHIP AND WHERE RELEVANT FROM A DUTY TO SEEK APPROVAL FROM THE COMPETENT AUTHORITY.



02 KEY PLAN
NTS

01 CONTAINMENT LAYOUT
E601 1:100

REV	DATE	DESCRIPTION	AK	AS	DSN	CHK
T00	10.12.24	ISSUED FOR TENDER				



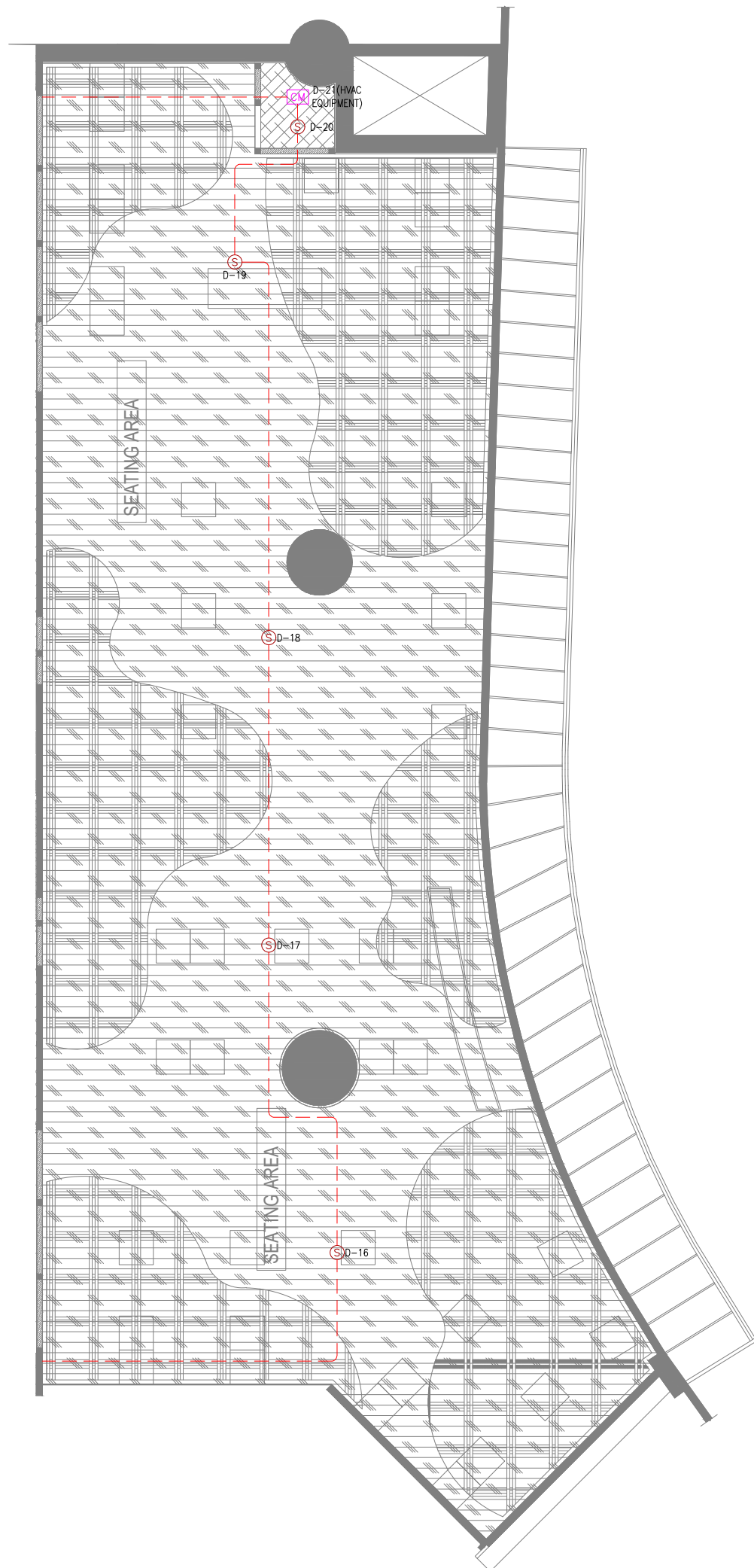
PROJECT
F03-07 DOMINOS, B.GALIYAN, IDLI
NOIDA INTERNATIONAL
AIRPORT LIMITED

DRAWING TITLE
CONTAINMENT LAYOUT
SEATING AREA

SCALE 1:100 DATE 10.12.24 DESIGN AK A3 SHEET

STATUS
TENDER

ORG	PROJECT NO	DRAWING TYPE	NUMBER	REV
TFS	XXXX	ELEC	E601	T00



FIRE ALARM LEGEND		
SYMBOL	DESCRIPTION	QTY
(S)	SMOKE DETECTOR (CEILING MOUNTED)	05
[CM]	CONTROL MODULE	01
---	FIRE ALARM CIRCUIT	--

NOTES

- ALL DIMENSIONS & LEVELS ARE IN "MM" OR OTHERWISE SPECIFIED.
- COMPLY WITH THE REQUIREMENTS OF NFPA 72.
- FIRE ALARM DEVICES TO BE SAME / RECOMMENDED MAKE USED AT AIRPORT TO AVOID COMPATIBILITY ISSUES.
- FIRE ALARM SYSTEM LOOP CABLE TO BE SAME SIZE & TYPE AS USED BY AIRPORT.
- RESPONSE INDICATOR (RI) TO BE PROVIDED AT FALSE CEILING FOR ABOVE CEILING DETECTORS.
- ALL CONDUITING TO BE EMT OR AS PER AIRPORT NORMS.
- CEILING VOID DETECTORS EXISTING AT SITE, TO BE RETAINED.

ALL DIMENSIONS MUST BE CHECKED ON SITE
INFORM THE ENGINEER OF ANY DISCREPANCIES PRIOR TO CONSTRUCTION

NOTES:
IRRESPECTIVE OF THE DRAWING(S), IT IS THE CONTRACTOR'S OBLIGATION AND RESPONSIBILITY THAT SHALL BE EXECUTED AND COMPLETED IN ACCORDANCE TO THE SPECIFICATION, DRAWING(S) AS WELL AS REQUIREMENT. THE SAID DRAWING(S) SHALL NOT RELIEVE CONTRACTOR FROM ITS OBLIGATION UNDER THE CONTRACT AND IN PARTICULAR FROM ITS RESPONSIBILITY IN RELATION TO THE INSTALLATION MATERIALS AND WORKMANSHIP AND WHERE RELEVANT FROM A DUTY TO SEEK APPROVAL FROM THE COMPETENT AUTHORITY.



02 KEY PLAN
NTS

01 FIRE ALARM LAYOUT
F101 1:100

REV	DATE	DESCRIPTION	TT	AS	DSN	CHK
T00	10.12.24	ISSUED FOR TENDER				



PROJECT
F03-07 DOMINOS, B.GALIYAN, IDLI
NOIDA INTERNATIONAL
AIRPORT LIMITED

DRAWING TITLE
FIRE ALARM LAYOUT
SEATING AREA

SCALE 1:100 DATE 10.12.24 DESIGN TT A3 SHEET

STATUS
TENDER

ORG	PROJECT NO	DRAWING TYPE	NUMBER	REV
TFS	XXXX	FIRE	F101	T00



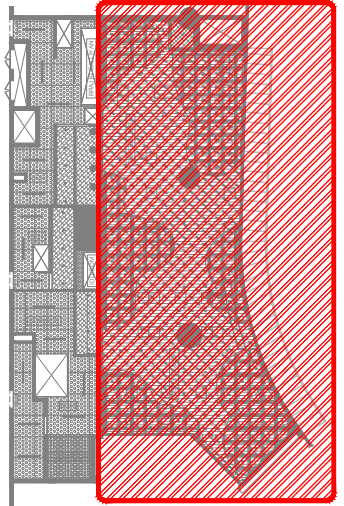
FIRE SPRINKLER SYSTEM LEGEND		
SYMBOL	DESCRIPTION	QTY
	SPRINKLER HEAD PENDENT	26
	SPRINKLER BUTTERFLY VALVE (ISOLATION VALVE)	01
	SPRINKLER PIPE	--
	SPRINKLER PIPE EXISTING	--
	SPRINKLER PIPE REDUCER	--
	SPRINKLER PIPE FLEXIBLE CONNECTION	26

- NOTES:
- INSTALLATION WORKS FOR THE AUTOMATIC SPRINKLERS SYSTEM SHALL COMPLY WITH THE REQUIREMENTS OF NPFA 13.
 - ISOLATION VALVE SHALL BE CONSIDERED AT SPRINKLER TAPPING (PN16) AND TRAP DOOR SHALL BE PROVIDED FOR THE SAME FOR EASY MAINTENANCE.
 - M.S "C" CLASS PIPES SHALL BE USED FOR THE FF PIPES.
 - DRAIN PIPE WITH BALL VALVE TO BE PROVIDED AFTER THE ISOLATION VALVE FOR MAINTENANCE PURPOSE AS PER SITE CONDITION.
 - ALL FIRE SPRINKLER PENDANT SHALL HAVE A COVERAGE AREA APPROXIMATELY 24 SQ.METER.
 - PRESSURE GAUGE TO BE PROVIDED AFTER ISOLATION VALVE.
 - KITCHEN HOOD FIRE SUPPRESSION SYSTEM SHOULD BE DESIGNED BY SPECIALIST VENDORS.

- ELBOW DOWN
- ELBOW UP
- TOP CONNECTION
- BOTTOM CONNECTION

ALL DIMENSIONS MUST BE CHECKED ON SITE
INFORM THE ENGINEER OF ANY DISCREPANCIES PRIOR TO CONSTRUCTION

NOTES:
IRRESPECTIVE OF THE DRAWING(S), IT IS THE CONTRACTOR'S OBLIGATION AND RESPONSIBILITY THAT SHALL BE EXECUTED AND COMPLETED IN ACCORDANCE TO THE SPECIFICATION, DRAWING(S) AS WELL AS REQUIREMENT. THE SAID DRAWING(S) SHALL NOT RELIEVE CONTRACTOR FROM ITS OBLIGATION UNDER THE CONTRACT AND IN PARTICULAR FROM ITS RESPONSIBILITY IN RELATION TO THE INSTALLATION MATERIALS AND WORKMANSHIP AND WHERE RELEVANT FROM A DUTY TO SEEK APPROVAL FROM THE COMPETENT AUTHORITY.



02 KEY PLAN
NTS

01 FIRE SPRINKLER LAYOUT
F201 1:100

REV	DATE	DESCRIPTION	ST	SF	DSN	CHK
T00	10.12.24	ISSUED FOR TENDER				



PROJECT
**F03-07 DOMINOES, B.GALIYAN, IDLY
NOIDA INTERNATIONAL
AIRPORT LIMITED**

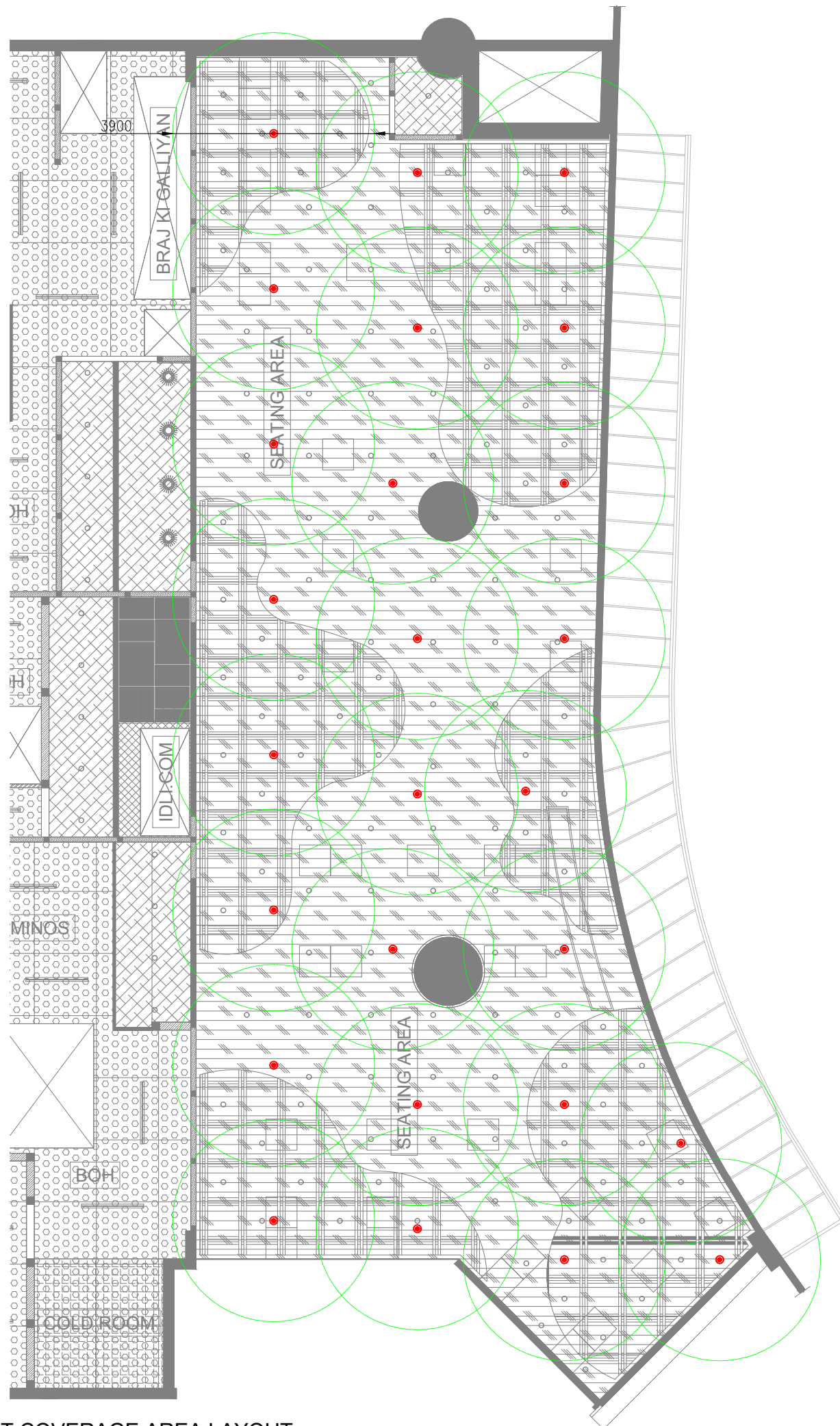
DRAWING TITLE
**FIRE SPRINKLER LAYOUT
SEATING AREA**

SCALE 1:100 DATE 10.12.24 DESIGN ST A3 SHEET

STATUS

TENDER

ORG	PROJECT NO	DRAWING TYPE	NUMBER	REV
TFS	XXXX	FIRE	F201	T00



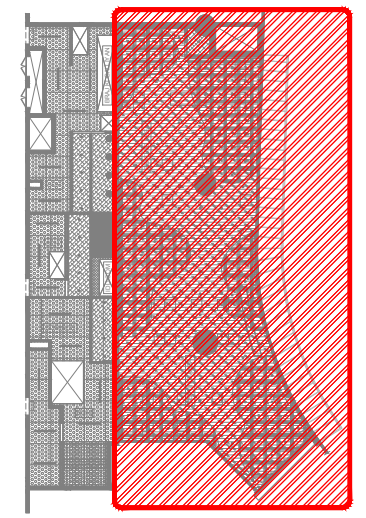
FIRE SPRINKLER SYSTEM LEGEND		
SYMBOL	DESCRIPTION	QTY
●	SPRINKLER HEAD PENDENT	26
⊠	SPRINKLER BUTTERFLY VALVE (ISOLATION VALVE)	01
—	SPRINKLER PIPE	--
—	SPRINKLER PIPE EXISTING	--
→	SPRINKLER PIPE REDUCER	--
~	SPRINKLER PIPE FLEXIBLE CONNECTION	26

- NOTES:
- INSTALLATION WORKS FOR THE AUTOMATIC SPRINKLERS SYSTEM SHALL COMPLY WITH THE REQUIREMENTS OF NPFA 13.
 - ISOLATION VALVE SHALL BE CONSIDERED AT SPRINKLER TAPPING (PN16) AND TRAP DOOR SHALL BE PROVIDED FOR THE SAME FOR EASY MAINTENANCE.
 - M.S "C" CLASS PIPES SHALL BE USED FOR THE FF PIPES.
 - DRAIN PIPE WITH BALL VALVE TO BE PROVIDED AFTER THE ISOLATION VALVE FOR MAINTENANCE PURPOSE AS PER SITE CONDITION.
 - ALL FIRE SPRINKLER PENDANT SHALL HAVE A COVERAGE AREA APPROXIMATELY 24 SQ.METER.
 - PRESSURE GAUGE TO BE PROVIDED AFTER ISOLATION VALVE.
 - KITCHEN HOOD FIRE SUPPRESSION SYSTEM SHOULD BE DESIGNED BY SPECIALIST VENDORS.

- ELBOW DOWN
- ELBOW UP
- ⊥ TOP CONNECTION
- ⊥ BOTTOM CONNECTION

ALL DIMENSIONS MUST BE CHECKED ON SITE
INFORM THE ENGINEER OF ANY DISCREPANCIES PRIOR TO CONSTRUCTION

NOTES:
IRRESPECTIVE OF THE DRAWING(S), IT IS THE CONTRACTOR'S OBLIGATION AND RESPONSIBILITY THAT SHALL BE EXECUTED AND COMPLETED IN ACCORDANCE TO THE SPECIFICATION, DRAWING(S) AS WELL AS REQUIREMENT. THE SAID DRAWING(S) SHALL NOT RELIEVE CONTRACTOR FROM ITS OBLIGATION UNDER THE CONTRACT AND IN PARTICULAR FROM ITS RESPONSIBILITY IN RELATION TO THE INSTALLATION MATERIALS AND WORKMANSHIP AND WHERE RELEVANT FROM A DUTY TO SEEK APPROVAL FROM THE COMPETENT AUTHORITY.



02 KEY PLAN
NTS

REV	DATE	DESCRIPTION	ST	SF	CHK
T00	10.12.24	ISSUED FOR TENDER			



PROJECT
F03-07 DOMINOES, B.GALIYAN, IDLY
NOIDA INTERNATIONAL
AIRPORT LIMITED

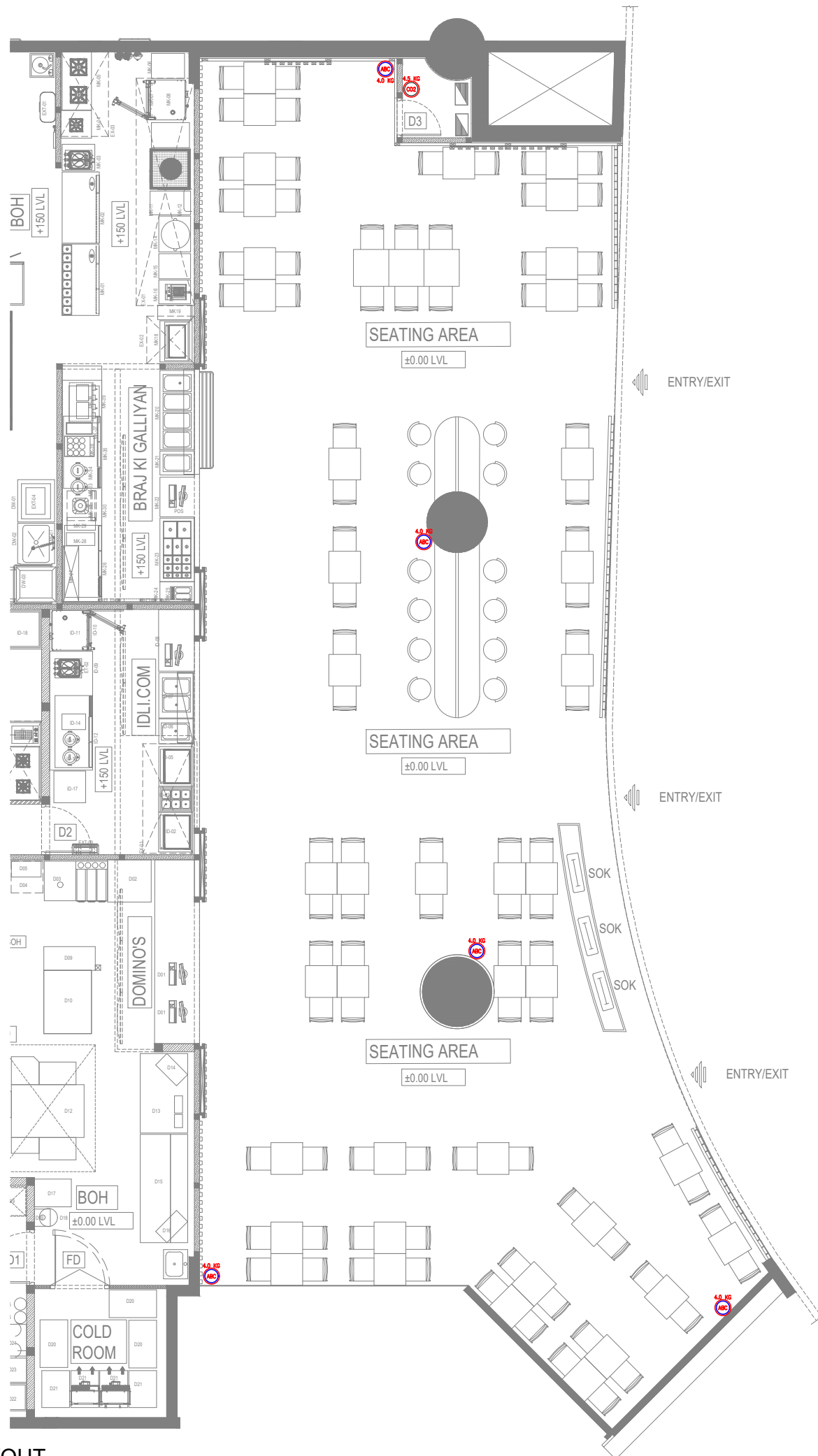
DRAWING TITLE
FIRE SPRINKLER LAYOUT
SEATING AREA

SCALE 1:100 DATE 10.12.24 DESIGN ST A3 SHEET

STATUS
TENDER

ORG	PROJECT NO	DRAWING TYPE	NUMBER	REV
TFS	XXXX	FIRE	F202	T00

01 FIRE SPRINKLER PENDANT COVERAGE AREA LAYOUT
F202 1:100



01 FIRE EXTINGUISHER LAYOUT
F301 1:100

FIRE EXTINGUISHERS LEGEND		
SYMBOL	DESCRIPTION	QTY
	FIRE EXTINGUISHER_CLASS ABC (DRY POWDER) - 4 KG	05
	FIRE EXTINGUISHER_CLASS BC (CO2) - 4.5 KG	01

- NOTES:
- FIRE EXTINGUISHER SHALL BE INSTALLED IN LOCATION WHERE THEY ARE VISIBLE
 - FIRE EXTINGUISHER SHALL BE CONSPICUOUSLY LOCATED WHERE THEY ARE READILY ACCESSIBLE AND IMMEDIATELY AVAILABLE IN THE EVENT OF FIRE.
 - FIRE EXTINGUISHER SHALL BE INSTALLED SO THAT THE FIRE EXTINGUISHER'S OPERATING INSTRUCTIONS FACE OUTWARD.
 - FIRE EXTINGUISHER SHALL BE INSTALLED SO THAT IN NO CASES THE TOP OF THE EXTINGUISHER IS NOT MORE THAT 1500MM ABOVE THE FLOOR LEVEL OR THE CLEARANCE BETWEEN THE BOTTOM OF THE HAND PORTABLE FIRE EXTINGUISHER AND THE FLOOR BE LESS THAN 100MM.
 - SIGNS OR OTHER MEANS USED TO INDICATE FIRE EXTINGUISHER LOCATION SHALL BE LOCATED IN CLOSE PROXIMITY TO THE EXTINGUISHER AND SHALL BE VISIBLE FROM THE NORMAL PATH OF TRAVEL.
 - ALL FIRE EXTINGUISHER SIGNS TO BE PROVIDED WITH NIGHT GLOW.

ALL DIMENSIONS MUST BE CHECKED ON SITE
INFORM THE ENGINEER OF ANY DISCREPANCIES PRIOR TO CONSTRUCTION

NOTES:
IRRESPECTIVE OF THE DRAWING(S), IT IS THE CONTRACTOR'S OBLIGATION AND RESPONSIBILITY THAT SHALL BE EXECUTED AND COMPLETED IN ACCORDANCE TO THE SPECIFICATION, DRAWING(S) AS WELL AS REQUIREMENT. THE SAID DRAWING(S) SHALL NOT RELIEVE CONTRACTOR FROM ANY OBLIGATION UNDER THE CONTRACT AND IN PARTICULAR FROM ITS RESPONSIBILITY IN RELATION TO THE INSTALLATION MATERIALS AND WORKMANSHIP AND WHERE RELEVANT FROM A DUTY TO SEEK APPROVAL FROM THE COMPETENT AUTHORITY.



02 KEY PLAN
NTS

T00	10.12.24	ISSUED FOR TENDER	ST	SF
REV	DATE	DESCRIPTION	DSN	CHK



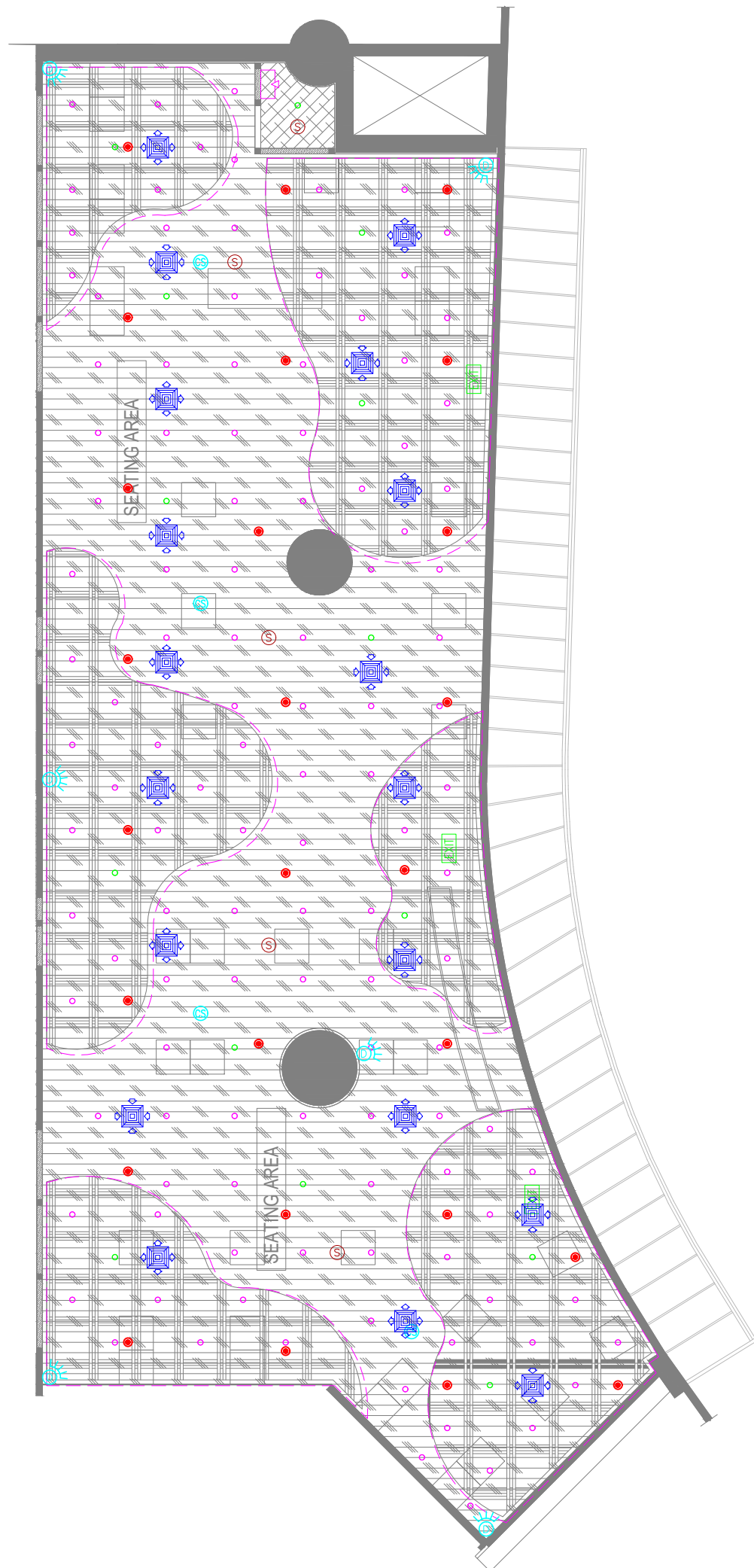
PROJECT
**F03-07 DOMINOS, B.GALIYAN, IDLI
NOIDA INTERNATIONAL
AIRPORT LIMITED**

DRAWING TITLE
**FIRE EXTINGUISHER LAYOUT
SEATING AREA**

SCALE 1:100 DATE 25.11.24 DESIGNST A3 SHEET

STATUS
TENDER

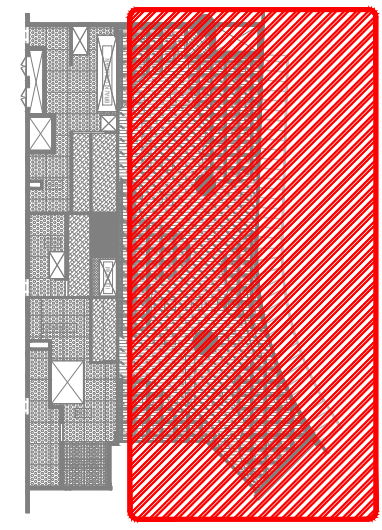
ORG	PROJECT NO	DRAWING TYPE	NUMBER	REV
TFS	XXXX	FIRE	F301	T00



LEGENDS	
	ACMV
	LIGHTING
	EMERGENCY LIGHTING
	CCTV, DATA & PA
	FIRE

ALL DIMENSIONS MUST BE CHECKED ON SITE
INFORM THE ENGINEER OF ANY DISCREPANCIES PRIOR TO CONSTRUCTION

NOTES:
IRRESPECTIVE OF THE DRAWING(S), IT IS THE CONTRACTOR'S OBLIGATION AND RESPONSIBILITY THAT SHALL BE EXECUTED AND COMPLETED IN ACCORDANCE TO THE SPECIFICATION, DRAWING(S) AS WELL AS REQUIREMENT. THE SAID DRAWING(S) SHALL NOT RELIEVE CONTRACTOR FROM ITS OBLIGATION UNDER THE CONTRACT AND IN PARTICULAR FROM ITS RESPONSIBILITY IN RELATION TO THE INSTALLATION MATERIALS AND WORKMANSHIP AND WHERE RELEVANT FROM A DUTY TO SEEK APPROVAL FROM THE COMPETENT AUTHORITY.



02 KEY PLAN
NTS

REV	DATE	DESCRIPTION	MB	RR
T00	10.12.24	ISSUED FOR TENDER		



PROJECT
**F03-07 DOMINOS, B.GALIYAN, IDLI
NOIDA INTERNATIONAL
AIRPORT LIMITED**

DRAWING TITLE
**M&E RCP COORDINATION LAYOUT
SEATING AREA**

SCALE 1:100 DATE 10.12.24 DESIGNMB A3 SHEET

STATUS
TENDER

ORG	PROJECT NO	DRAWING TYPE	NUMBER	REV
TFS	XXXX	COORD	X101	T00

01 M&E RCP COORDINATION LAYOUT
X101 1:100