

# IN-DXN-CHAI POINT (FOOD HUB)\_M&E DRAWINGS

ALL DIMENSIONS MUST BE CHECKED ON SITE  
INFORM THE ENGINEER OF ANY DISCREPANCIES PRIOR TO CONSTRUCTION

NOTES:  
IRRESPECTIVE OF THE DRAWING(S), IT IS THE CONTRACTOR'S OBLIGATION AND RESPONSIBILITY THAT SHALL BE EXECUTED AND COMPLETED IN ACCORDANCE TO THE SPECIFICATION, DRAWING(S) AS WELL AS REQUIREMENT. THE SAID DRAWING(S) SHALL NOT RELIEVE CONTRACTOR FROM ITS OBLIGATION UNDER THE CONTRACT AND IN PARTICULAR FROM ITS RESPONSIBILITY IN RELATION TO THE INSTALLATION MATERIALS AND WORKMANSHIP AND WHERE RELEVANT FROM A DUTY TO SEEK APPROVAL FROM THE COMPETENT AUTHORITY.

CONTENTS		
DWG NO.	DRAWING TITLE	PAGE NO.
M101	IN-DXN-CHAI POINT (FOOD HUB)_HVAC LAYOUT	01
E101	IN-DXN-CHAI POINT (FOOD HUB)_ELECTRICAL SLD - SMDB	02
E102	IN-DXN-CHAI POINT (FOOD HUB)_ELECTRICAL SLD - LPDB	03
E103	IN-DXN-CHAI POINT (FOOD HUB)_ELECTRICAL SLD - UDB	04
E201	IN-DXN-CHAI POINT (FOOD HUB)_LOAD CALCULATION SHEET - SMDB	05
E202	IN-DXN-CHAI POINT (FOOD HUB)_LOAD CALCULATION SHEET - LPDB	06
E203	IN-DXN-CHAI POINT (FOOD HUB)_LOAD CALCULATION SHEET - UDB	07
E301	IN-DXN-CHAI POINT (FOOD HUB)_POWER LAYOUT	08
E401	IN-DXN-CHAI POINT (FOOD HUB)_LIGHTING LAYOUT	09
E501	IN-DXN-CHAI POINT (FOOD HUB)_CCTV & DATA LAYOUT	10
E601	IN-DXN-CHAI POINT (FOOD HUB)_CONTAINMENT LAYOUT	11
P101	IN-DXN-CHAI POINT (FOOD HUB)_DRAINAGE LAYOUT	12
P102	IN-DXN-CHAI POINT (FOOD HUB)_DRAINAGE SCHEMATIC LAYOUT	13
P201	IN-DXN-CHAI POINT (FOOD HUB)_WATER SUPPLY LAYOUT	14
P202	IN-DXN-CHAI POINT (FOOD HUB)_WATER SUPPLY SCHEMATIC LAYOUT	15
F101	IN-DXN-CHAI POINT (FOOD HUB)_FIRE ALARM LAYOUT	16
F201	IN-DXN-CHAI POINT (FOOD HUB)_FIRE SPRINKLER LAYOUT	17
F202	IN-DXN-CHAI POINT (FOOD HUB)_FIRE SPRINKLER PENDANT COVERAGE AREA LAYOUT	18
F301	IN-DXN-CHAI POINT (FOOD HUB)_FIRE EXTINGUISHER LAYOUT	19

TOO	07.12.24	ISSUED FOR TENDER	MB	SF
REV	DATE	DESCRIPTION	DSN	CHK



PROJECT  
F11-14 CHAI POINT, KFC & SUBWAY  
NOIDA INTERNATIONAL  
AIRPORT LIMITED,

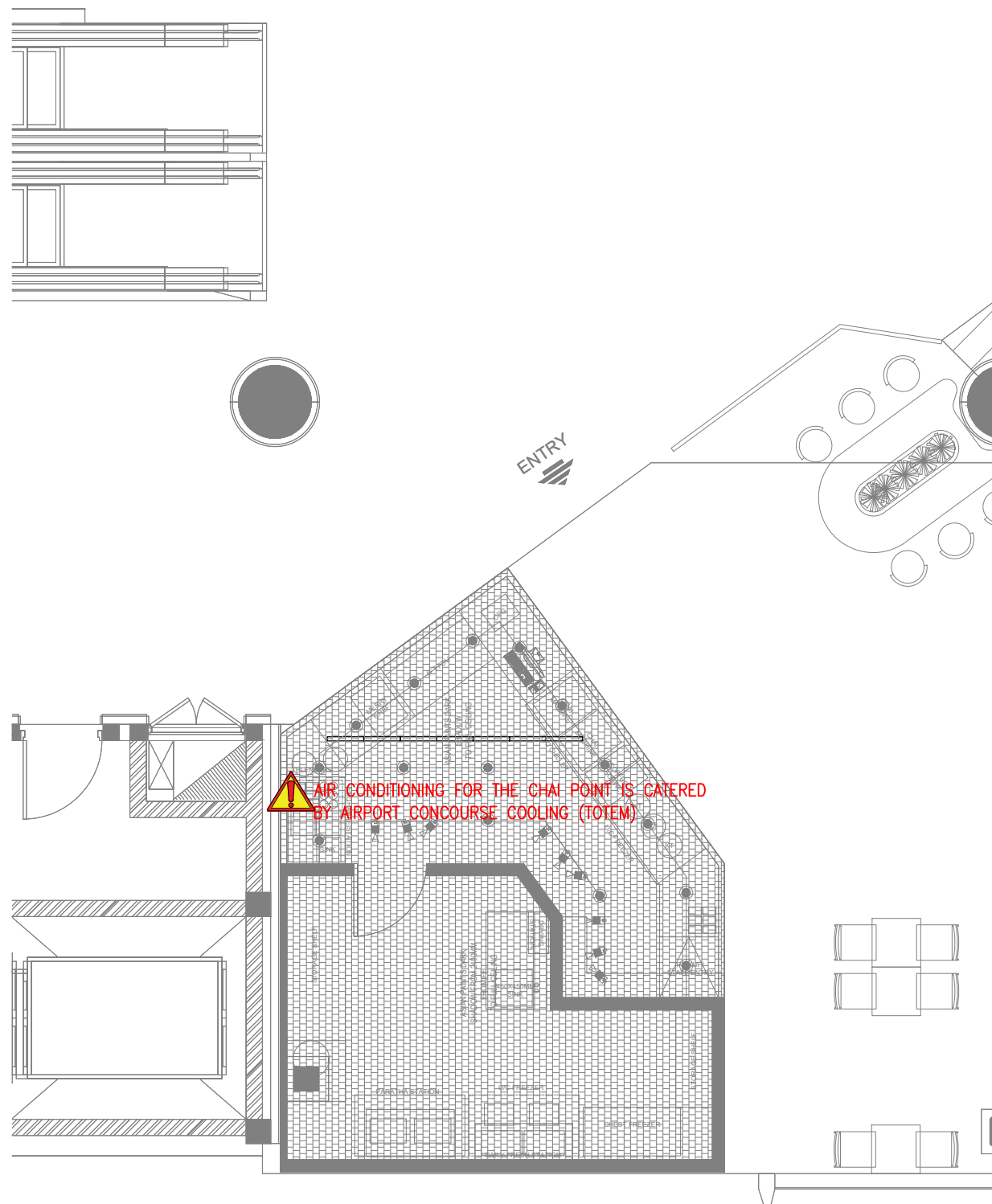
DRAWING TITLE  
TITLE SHEET  
CHAI POINT

SCALE 1:100 DATE 07.12.24 DESIGNMB A3 SHEET

STATUS

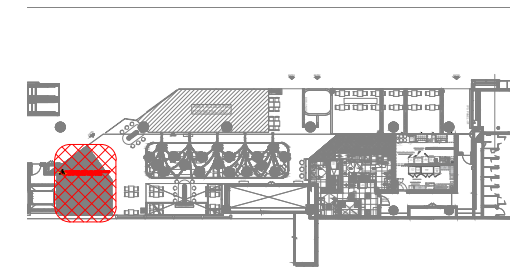
TENDER

ORG	PROJECT NO	DRAWING TYPE	NUMBER	REV
TFS	0000	GEN	G101	T00



ALL DIMENSIONS MUST BE CHECKED ON SITE  
INFORM THE ENGINEER OF ANY DISCREPANCIES PRIOR TO CONSTRUCTION

NOTES:  
IRRESPECTIVE OF THE DRAWING(S), IT IS THE CONTRACTOR'S OBLIGATION AND RESPONSIBILITY THAT SHALL BE EXECUTED AND COMPLETED IN ACCORDANCE TO THE SPECIFICATION, DRAWING(S) AS WELL AS REQUIREMENT. THE SAID DRAWING(S) SHALL NOT RELIEVE CONTRACTOR FROM ANY OBLIGATION UNDER THE CONTRACT AND IN PARTICULAR FROM ITS RESPONSIBILITY IN RELATION TO THE INSTALLATION MATERIALS AND WORKMANSHIP AND WHERE RELEVANT FROM A DUTY TO SEEK APPROVAL FROM THE COMPETENT AUTHORITY.



**02 KEY PLAN**  
NTS

REV	DATE	DESCRIPTION	MB	SF	DSN	CHK
T00	07.12.24	ISSUED FOR TENDER				



PROJECT  
F11-14 CHAI POINT, KFC & SUBWAY  
NOIDA INTERNATIONAL  
AIRPORT LIMITED,

DRAWING TITLE  
HVAC LAYOUT  
CHAI POINT

SCALE 1:75 DATE 07.12.24 DESIGNMB A3 SHEET

STATUS

TENDER

ORG	PROJECT NO	DRAWING TYPE	NUMBER	REV
TFS	0000	HVAC	M101T00	

**01 HVAC LAYOUT - CHAI POINT**  
M101 1:75

PROJECT / BUILDING NAME :		NOIDA INTERNATIONAL AIRPORT															
FED FROM :		AIRPORT DISTRIBUTION FEEDER (NEW FEEDER)															
DISTRIBUTION BOARD / REF :		SMDB-CP										DB AREA REFERENCE :					
MAIN INCOMING CABLE :		4C x 25 SQ.MM XLPE AL. ARMoured CABLE + EARTHING AS PER SLD										DOCUMENT NO. :					
MAIN INCOMER RATING (A)	CIRCUIT ID	BREAKER TYPE	BREAKER RATING (A)	WIRE SIZE (PH & N) (mm <sup>2</sup> )	WIRE SIZE (EARTH) (mm <sup>2</sup> )	EQUIP. TAG	CIRCUIT NAME / POINT REFERENCE	NUMBER OF POINTS	CONN. LOAD / POINT (W)	DIVERSITY TYPE	DIVERSITY FACTOR	R	Y	B	TOTAL CONN. LOAD (kW)	TOTAL DIVERSITY LOAD (kW)	REMARKS
63A 4P MCCB+ELR	R1	SP MCB	20 A	2.5	1.5	S107	SS CHILLER	1	850	PWR	1	0.85			0.65	0.65	-
	Y1	SP MCB	20 A	4.0	2.5	S103	PRADEEP MACHINE-1	1	2400	PWR	0.7		2.40		2.40	1.68	-
	B1	SP MCB	20 A	2.5	1.5	S108	SS FREEZER	1	650	PWR	1			0.65	0.85	0.85	-
	R2	SP MCB	20 A	4.0	2.5	S102	PRADEEP MACHINE-2	1	2400	PWR	0.7	2.40			2.40	1.68	-
	Y2	SP MCB	20 A	4.0	2.5	S102	PRADEEP MACHINE-3	1	2400	PWR	0.7		2.40		2.40	1.68	-
	B2	SP MCB	20 A	4.0	2.5	S102	PRADEEP MACHINE-4	1	2400	PWR	0.7			2.40	2.40	1.68	-
	R3	SP MCB	20 A	4.0	2.5	S111	COFFEE MACHINE	1	3000	PWR	0.7	3.00			3.00	2.10	-
	Y3	SP MCB	20 A	4.0	2.5	S106	CHAI MACHINE-1	1	3000	PWR	0.7		3.00		3.00	2.10	-
	B3	SP MCB	20 A	4.0	2.5	S106	CHAI MACHINE-2	1	3000	PWR	0.7			3.00	3.00	2.10	-
	R4	SP MCB	16 A	2.5	1.5	S105	FOOD DISPLAY UNIT	1	950	PWR	1	0.95			0.95	0.95	-
	Y4	SP MCB	20 A	2.5	1.5	S112	ICE CUBE MACHINE	1	450	PWR	1		0.45		0.45	0.45	-
	B4	SP MCB	20 A	4.0	2.5	S110	MERRY CHEF	1	2200	PWR	0.7			2.20	2.20	1.54	-
	R5	SP MCB	20 A	4.0	2.5	-	SPARE SOCKET								0.00	0.00	-
	Y5	SP MCB	20 A	4.0	2.5	-	SPARE SOCKET								0.00	0.00	-
	B5	SP MCB	16 A				SPARE								0.00	0.00	-
RYB6	SP MCB	25 A				SPARE								0.00	0.00	-	
											<b>SMDB-CP</b>	7.20	8.25	8.25	<b>23.70</b>	<b>17.46</b>	
												<b>TCL - R</b>	<b>TCL - Y</b>	<b>TCL - B</b>	<b>TCL</b>	<b>TDL</b>	

**ABBREVIATIONS :** PWR - POWER, LTG - LIGHTING, UPS - UNINTERRUPTIBLE POWER SUPPLY, A - AMPS, W - WATTS, kW - KILOWATT, 1R - ONE RUN, 4C - FOUR CORE, 2C - TWO CORE, CU. - COPPER, ECC - EARTH CONTINUITY CONDUCTOR, CONN. - CONNECTED

TOTAL CONNECTED LOAD	23.70	SMDB-CP	TCL (kW)
TOTAL CONNECTED LOAD	26.33	SMDB-CP	TCL (kVA)
TOTAL DEMAND LOAD	17.46	SMDB-CP	TDL (kW)
TOTAL DEMAND LOAD	19.40	SMDB-CP	TDL (kVA)
AVERAGE DIVERSITY FACTOR	74%	SMDB-CP	%



PROJECT  
F11-14 CHAI POINT, KFC & SUBWAY  
NOIDA INTERNATIONAL  
AIRPORT LIMITED,

DRAWING TITLE  
LOAD CALCULATION SHEET  
SMDB-CP

STATUS  
TENDER

PROJECT / BUILDING NAME :		NOIDA INTERNATIONAL AIRPORT																
FED FROM :		AIRPORT DISTRIBUTION FEEDER (F11 - F&B - 63A 4P ISOLATOR EXISTING AT SITE-AVAILABLE POWER : CL:13KW, DL:8.50KW)																
DISTRIBUTION BOARD / REF :		LPDB-CP										DB AREA REFERENCE :						
MAIN INCOMING CABLE :		4C x 25 SQ.MM XLPE AL. ARMoured CABLE + EARTHING AS PER SLD										DOCUMENT NO. :						
MAIN INCOMER RATING (A)	CIRCUIT ID	BREAKER TYPE	BREAKER RATING (A)	WIRE SIZE (PH & N) (mm <sup>2</sup> )	WIRE SIZE (EARTH) (mm <sup>2</sup> )	EQUIP. TAG	CIRCUIT NAME / POINT REFERENCE	NUMBER OF POINTS	CONN. LOAD / POINT (W)	DIVERSITY TYPE	DIVERSITY FACTOR	R	Y	B	TOTAL CONN. LOAD (kW)	TOTAL DIVERSITY LOAD (kW)	REMARKS	
63A 4P MCCB+EL R	R1	SP MCB	20 A	2.5	1.5		SS CHILLER	1	850	PWR	1	0.85			0.85	0.85		
	B1	SP MCB	20 A	2.5	1.5		SS FREEZER	1	650	PWR	1		0.65		0.65	0.65		
	Y1	SP MCB	20 A	2.5	1.5		MICROWAVE	1	1000	PWR	0.6			1.00	1.00	0.60		
	R2	SP MCB	20 A	2.5	1.5		MICROWAVE	1	1000	PWR	0.6	1.00			1.00	0.60		
	Y2	SP MCB	20 A	2.5	1.5		WATER HEATER	1	2000	PWR	0.6		2.00		2.00	1.20		
	B2	SP MCB	16 A	2.5	1.5		FLY KILLER	2	60	PWR	1			0.12	0.12	0.12		
	R3	SP MCB	20 A	4.0	2.5		INDUCTION PAD	1	2000	PWR	0.6	2.00			2.00	1.20		
	Y3	SP MCB	20 A	2.5	1.5		BLENDER-1	1	1000	PWR	0.6		1.00		1.00	0.60		
	B3	SP MCB	20 A	2.5	1.5		BLENDER-2	1	1000	PWR	0.6			1.00	1.00	0.60		
	R4	SP MCB	10 A	2.5	1.5		CEILING SURFACE LIGHT (7 Nos)+ TRACK LIGHT(9 Nos.)	1	205	LTG	1	0.21			0.21	0.21		
	Y4	SP MCB	10 A	2.5	1.5		SIGNAGE LIGHT(2 Nos.)	2	100	LTG	1		0.20		0.20	0.20		
	B4	SP MCB	25 A	4.0	4.0		UDB	1	1845	PWR	0.7			1.85	1.85	1.30		
	R5	SP MCB	25 A				SPARE								0.00	TDL		
	Y5	SP MCB	16 A				SPARE								0.00	0.00		
	B5	SP MCB	16 A				SPARE								0.00	0.00		
	R6	SP MCB	16 A				SPARE								0.00	0.00		
	Y6	SP MCB	16 A				SPARE								0.00	0.00		
	B6	SP MCB	16 A				SPARE								0.00	0.00		
	R7	SP MCB	10 A				SPARE								0.00	0.00		
	Y7	SP MCB	10 A				SPARE								0.00	0.00		
B7	SP MCB	10 A				SPARE								0.00	0.00			
R8	SP MCB	10 A				SPARE								0.00	0.00			
Y8	SP MCB	10 A				SPARE								0.00	0.00			
B8	SP MCB	10 A				SPARE								0.00	0.00			
												LPDB-CP	4.06	3.85	3.97	11.87	8.12	
													TCL - R	TCL - Y	TCL - B	TCL	TDL	

ABBREVIATIONS : PWR - POWER, LTG - LIGHTING, UPS - UNINTERRUPTIBLE POWER SUPPLY, A - AMPS, W - WATTS, kW - KILOWATT, 1R - ONE RUN, 4C - FOUR CORE, 2C - TWO CORE, CU. - COPPER, ECC - EARTH CONTINUITY CONDUCTOR, CONN. - CONNECTED

TOTAL CONNECTED LOAD	11.87	LPDB-CP	TCL (kW)
TOTAL CONNECTED LOAD	13.19	LPDB-CP	TCL (kVA)
TOTAL DEMAND LOAD	8.12	LPDB-CP	TDL (kW)
TOTAL DEMAND LOAD	9.02	LPDB-CP	TDL (kVA)
AVERAGE DIVERSITY FACTOR	68%	LPDB-CP	%

T00 07.12.24 ISSUED FOR TENDER TT AS  
REV DATE DESCRIPTION DSN CHK



PROJECT  
F11-14 CHAI POINT, KFC & SUBWAY  
NOIDA INTERNATIONAL  
AIRPORT LIMITED,

DRAWING TITLE  
LOAD CALCULATION SHEET  
LPDB-CP

SCALE NTS DATE 07.12.24 DESIGN TT A3 SHEET

STATUS  
TENDER

ORG PROJECT NO DRAWING TYPE NUMBER REV  
TFS 0000 ELEC E102 T00



PROJECT / BUILDING NAME :		NOIDA INTERNATIONAL AIRPORT														
FED FROM :		LPDB-CP														
DISTRIBUTION BOARD / REF :		UDB-CP										DB AREA REFERENCE :				
MAIN INCOMING CABLE :		3C x 4 SQ.MM COPPER FLEXIBLE										DOCUMENT NO. :				
MAIN INCOMER RATING (A)	CIRCUIT ID	BREAKER TYPE	BREAKER RATING (A)	WIRE SIZE (PH & N) (mm <sup>2</sup> )	WIRE SIZE (EARTH) (mm <sup>2</sup> )	EQUIP. TAG	CIRCUIT NAME / POINT REFERENCE	NUMBER OF POINTS	CONN. LOAD / POINT (W)	DIVERSITY TYPE	DIVERSITY FACTOR	R	TOTAL CONN. LOAD (kW)	TOTAL DIVERSITY LOAD (kW)	REMARKS	
25A 2P 30mA RCCB	C1	SP MCB	20 A	2 x 4	2 x 2.5		POS	6	100	PWR	0.5	0.60	0.60	0.30	RING CKT	
	C2	SP MCB	20 A	4.0	2.5		BILLING MACHINE	4	100	PWR	0.5	0.40	0.40	0.20		
	C3	SP MCB	20 A	2 x 4	2 x 2.5		DIGITAL DISPLAY	7	30	PWR	1	0.21	0.21	0.21	RING CKT	
	C4	SP MCB	16 A	2.5	2.5		IDF RACK	1	330	PWR	1	0.33	0.33	0.33	-	
	C5	SP MCB	16 A	2.5	1.5		RO MACHINE	1	45	PWR	1	0.05	0.05	0.05		
	C6	SP MCB	10 A	2.5	1.5		CEILING SURFACE LIGHT + CEILING PANEL LIGHT + EXIT LIGHT	1	160	LTG	1	0.16	0.16	0.16		
	C7	SP MCB	10 A	2.5	1.5	-	SPARE SOCKET	1	100	PWR	0.5	0.10	0.10	0.05		
	C8	SP MCB	10 A				SPARE						0.00	0.00	-	
												UDB-CP	1.85	1.85	1.30	
													TCL - R	TCL	TDL	

**ABBREVIATIONS :** PWR - POWER, LTG - LIGHTING, UPS - UNINTERRUPTIBLE POWER SUPPLY, A - AMPS, W - WATTS, kW - KILOWATT, 1R - ONE RUN, 4C - FOUR CORE, 2C - TWO CORE, CU. - COPPER, ECC - EARTH CONTINUITY CONDUCTOR, CONN. - CONNECTED

TOTAL CONNECTED LOAD	1.85	UDB-CP	TCL (kW)
TOTAL CONNECTED LOAD	1.85	UDB-CP	TCL (kVA)
TOTAL DEMAND LOAD	1.30	UDB-CP	TDL (kW)
TOTAL DEMAND LOAD	1.30	UDB-CP	TDL (kVA)
AVERAGE DIVERSITY FACTOR	70%	UDB-CP	%



PROJECT  
F11-14 CHAI POINT, KFC & SUBWAY  
NOIDA INTERNATIONAL  
AIRPORT LIMITED,

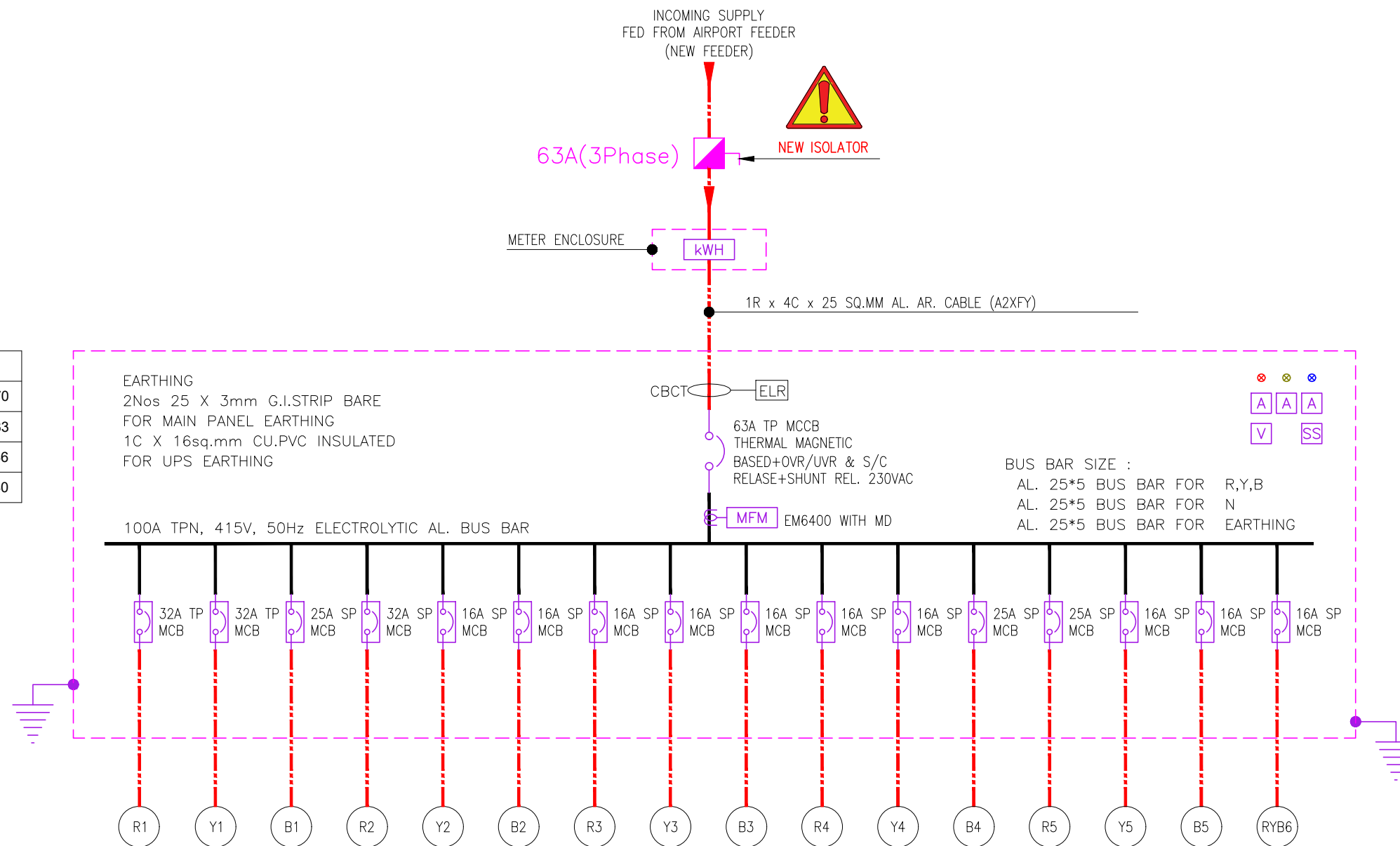
DRAWING TITLE  
LOAD CALCULATION SHEET  
UDB-CP

STATUS  
TENDER

ALL DIMENSIONS MUST BE CHECKED ON SITE  
INFORM THE ENGINEER OF ANY DISCREPANCIES PRIOR TO CONSTRUCTION

NOTES:  
IRRESPECTIVE OF THE DRAWING(S), IT IS THE CONTRACTOR'S OBLIGATION AND RESPONSIBILITY THAT SHALL BE EXECUTED AND COMPLETED IN ACCORDANCE TO THE SPECIFICATION, DRAWING(S) AS WELL AS REQUIREMENT. THE SAID DRAWING(S) SHALL NOT RELIEVE CONTRACTOR FROM ITS OBLIGATION UNDER THE CONTRACT AND IN PARTICULAR FROM ITS RESPONSIBILITY IN RELATION TO THE INSTALLATION MATERIALS AND WORKMANSHIP AND WHERE RELEVANT FROM A DUTY TO SEEK APPROVAL FROM THE COMPETENT AUTHORITY.

SMDB-CP	
CONN. LOAD (KW)	23.70
CONN. LOAD (KVA)	26.33
DEMAND LOAD (KW)	17.46
DEMAND LOAD (KVA)	19.40



ELECTRICAL LOW VOLTAGE SYSTEM LEGEND		
SYMBOL	DESCRIPTION	QTY
	MCCB (MOULDED CASE CIRCUIT BREAKER)	--
	MCB (MINIATURE CIRCUIT BREAKER)	--
	RCCB (RESIDUAL CURRENT CIRCUIT BREAKER)	--
	THREE PHASE ISOLATOR	--
	SINGLE PHASE ISOLATOR	--
	DIRECT ONLINE STARTER (D.O.L.)	--
	KWH METER - CT TYPE	--
	MFM METER	--
	EARTH CONNECTION	--
	PUSH ON & OFF SWITCH	--

NOTES

- CONTRACTOR TO CHECK & CONFIRM ACTUAL SITE CONDITIONS PRIOR TO START DEVELOPING THEIR SHOP DRAWINGS & WORK AT SITE.
- LAMINATED SINGLE LINE DIAGRAM & LOAD CALCULATION SHEET TO BE PROVIDED INSIDE / NEAR TO EACH ELECTRICAL PANEL / DB'S.
- ALL CABLES & WIRES MUST BE FRLSH/LSZH.
- GI CONDUITS WITH SUITABLE DIAMETER TO BE USED.

T00 07.12.24 ISSUED FOR TENDER TT AS  
REV DATE DESCRIPTION DSN CHK

LOAD (KW)	0.65	2.40	0.85	2.40	2.40	2.40	3.00	3.00	3.00	0.95	0.45	2.20	0.00	0.00	0.00	0.00
MCB RATING	20 A	20 A	20 A	20 A	20 A	20 A	20 A	20 A	20 A	16 A	20 A	20 A	20 A	20 A	16 A	25 A
WIRE SIZE (PH & N)	2.5	4.0	2.5	4.0	4.0	4.0	4.0	4.0	4.0	2.5	2.5	4.0	4.0	4.0	--	--
WIRE SIZE (EARTH)	1.5	2.5	1.5	2.5	2.5	2.5	2.5	2.5	2.5	1.5	1.5	2.5	2.5	2.5	--	--
FEEDER/EQUIPMENT NAME	SS CHILLER	PRADEEP MACHINE-1	SS FREEZER	PRADEEP MACHINE-2	PRADEEP MACHINE-3	PRADEEP MACHINE-4	COFFEE MACHINE	CHAI MACHINE-1	CHAI MACHINE-2	FOOD DISPLAY UNIT	ICE CUBE MACHINE	MERRY CHEF	SPARE SOCKET	SPARE SOCKET	SPARE	SPARE



PROJECT  
F11-14 CHAI POINT, KFC & SUBWAY  
NOIDA INTERNATIONAL  
AIRPORT LIMITED,

DRAWING TITLE  
ELECTRICAL SLD  
SMDB-CP

SCALE 1:100 DATE 07.12.24 DESIGN TT A3 SHEET

STATUS  
TENDER

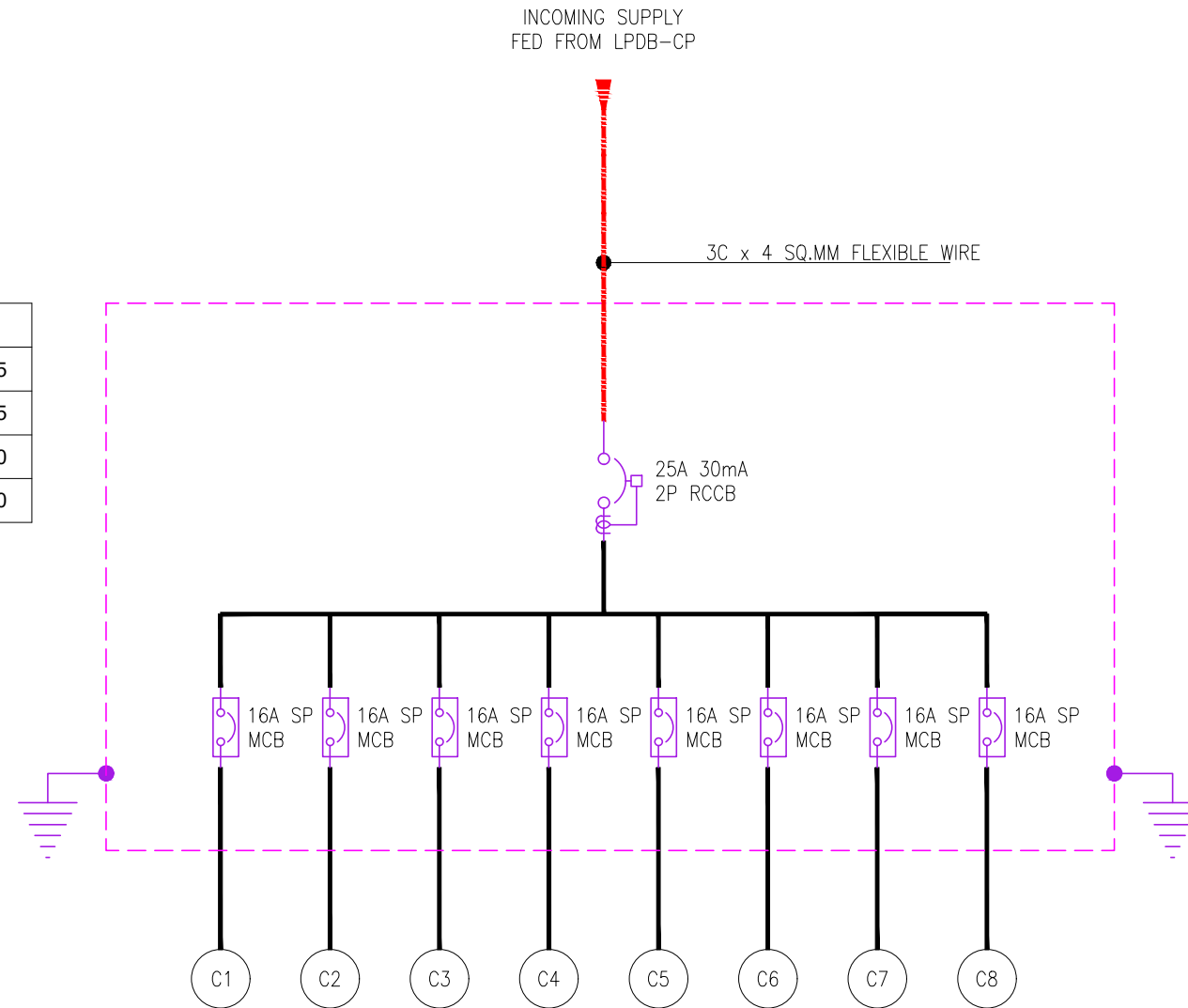
ORG PROJECT NO DRAWING TYPE NUMBER REV  
TFS 0000 ELEC E201 T00



ALL DIMENSIONS MUST BE CHECKED ON SITE  
INFORM THE ENGINEER OF ANY DISCREPANCIES PRIOR TO CONSTRUCTION

NOTES:  
IRRESPECTIVE OF THE DRAWING(S), IT IS THE CONTRACTOR'S OBLIGATION AND RESPONSIBILITY THAT SHALL BE EXECUTED AND COMPLETED IN ACCORDANCE TO THE SPECIFICATION, DRAWING(S) AS WELL AS REQUIREMENT. THE SAID DRAWING(S) SHALL NOT RELIEVE CONTRACTOR FROM ITS OBLIGATION UNDER THE CONTRACT AND IN PARTICULAR FROM ITS RESPONSIBILITY IN RELATION TO THE INSTALLATION MATERIALS AND WORKMANSHIP AND WHERE RELEVANT FROM A DUTY TO SEEK APPROVAL FROM THE COMPETENT AUTHORITY.

UDB-CP	
CONN. LOAD (KW)	1.85
CONN. LOAD (KVA)	1.85
DEMAND LOAD (KW)	1.30
DEMAND LOAD (KVA)	1.30



ELECTRICAL LOW VOLTAGE SYSTEM LEGEND		
SYMBOL	DESCRIPTION	QTY
	MCCB (MOULDED CASE CIRCUIT BREAKER)	--
	MCB (MINIATURE CIRCUIT BREAKER)	--
	RCCB (RESIDUAL CURRENT CIRCUIT BREAKER)	--
	THREE PHASE ISOLATOR	--
	SINGLE PHASE ISOLATOR	--
	DIRECT ONLINE STARTER (D.O.L.)	--
	KWH METER - CT TYPE	--
	MFM METER	--
	EARTH CONNECTION	--
	PUSH ON & OFF SWITCH	--

NOTES

- CONTRACTOR TO CHECK & CONFIRM ACTUAL SITE CONDITIONS PRIOR TO START DEVELOPING THEIR SHOP DRAWINGS & WORK AT SITE.
- LAMINATED SINGLE LINE DIAGRAM & LOAD CALCULATION SHEET TO BE PROVIDED INSIDE / NEAR TO EACH ELECTRICAL PANEL / DB'S.
- ALL CABLES & WIRES MUST BE FRLSH/LSZH.
- GI CONDUITS WITH SUITABLE DIAMETER TO BE USED.

LOAD (KW)	0.60	0.40	0.21	0.33	0.05	0.16	0.10	0.00
MCB RATING	20 A	20 A	20 A	16 A	16 A	10 A	10 A	10 A
WIRE SIZE (PH & N)	2 x 4	4.0	2 x 4	2.5	2.5	2.5	2.5	--
WIRE SIZE (EARTH)	2 x 2.5	2.5	2 x 2.5	2.5	1.5	1.5	1.5	--
FEEDER/EQUIPMENT NAME	POS	BILLING MACHINE	DIGITAL DISPLAY	IDF RACK	RO MACHINE	CEILING SURFACE LIGHT + CEILING PANEL LIGHT + EXIT LIGHT	SPARE SOCKET	SPARE

T00 07.12.24 ISSUED FOR TENDER TT AS  
REV DATE DESCRIPTION DSN CHK



PROJECT  
F11-14 CHAI POINT, KFC & SUBWAY  
NOIDA INTERNATIONAL  
AIRPORT LIMITED,

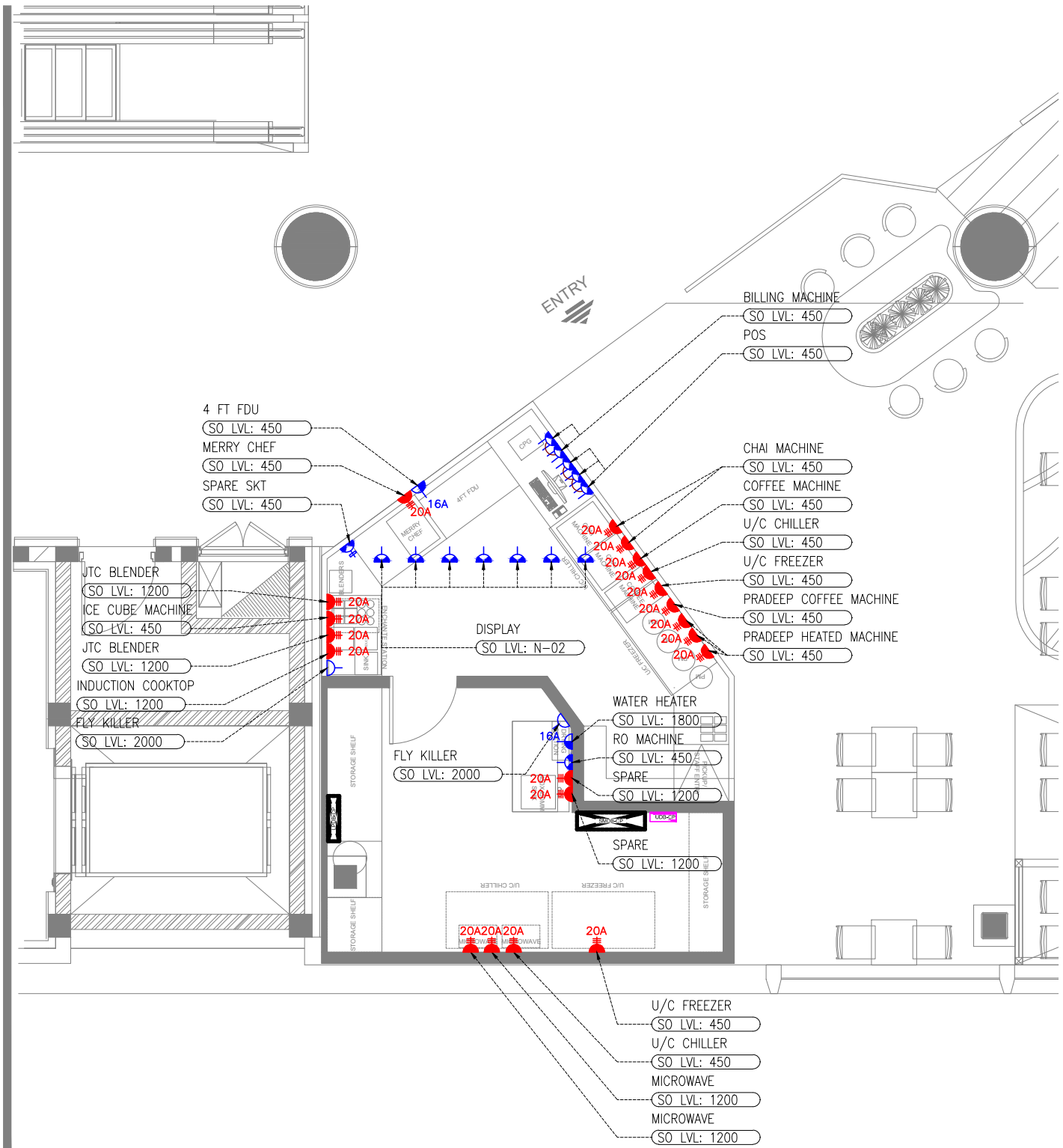
DRAWING TITLE  
ELECTRICAL SLD  
UDB-CP

SCALE 1:100 DATE 07.12.24 DESIGN TT A3 SHEET

STATUS

TENDER

ORG PROJECT NO DRAWING TYPE NUMBER REV  
TFS 0000 ELEC E203 T00



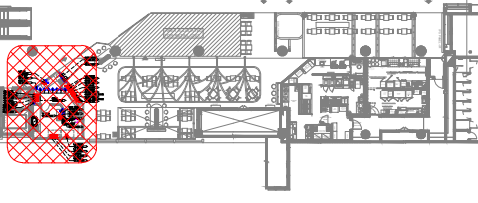
**01 POWER LAYOUT-CHAI POINT**  
E302 1:100

ELECTRICAL SYSTEM LEGEND		
SYMBOL	DESCRIPTION	QTY
	13A SINGLE SWITCHED SOCKET OUTLET	02
	13A SINGLE SWITCHED SOCKET OUTLET (UPS POWER)	08
	13A SINGLE SWITCHED SOCKET OUTLET + USB PORT (UPS POWER)	01
	13A DUAL SWITCHED SOCKET OUTLET (UPS POWER)	05
	16A SINGLE SWITCHED SOCKET OUTLET	02
	SINGLE PHASE INDUSTRIAL SWITCHED SOCKET (3 PIN) ((WALL MOUNTED METAL CLAD SOCKET)	20
	LPDB / SMDB	01
	RUBBER MAT ON FLOOR	--
	DBs - LIGHTING & POWER DISTRIBUTION BOARD	02
	ELECTRICAL POWER CIRCUIT	--

- NOTES**
- ALL DIMENSIONS & LEVEL ARE IN "MM" OR OTHERWISE MENTIONED.
  - SOCKETS PROVIDED NEAR WET AREAS SHALL BE AT LEAST 1.2 MTR AWAY FROM WATER SOURCE AND IP66 RATED.
  - A DISTANCE OF MINIMUM 300MM TO BE MAINTAINED BETWEEN POWER AND COMMUNICATION CABLE.
  - ALL CIRCUITS IN DB ARE TO BE TAGGED. MCB/MCCB IS TO BE LABELED AND THE SCHEMATIC IS TO BE UPDATED ACCORDING TO WHAT IS DISPLAYED IN DB.
  - SOCKET ELEVATIONS SHOWN IN THE DRAWING IS DESIGN INDICATIVE. THE CONTRACTOR NEEDS TO FIELD VERIFY AT THE SITE AND INTEGRATE IT TO MATCH WITH THE ID DESIGN FOR THE FINAL LOCATION & ELEVATIONS.
  - SHUTTER TYPE SWITCH SOCKET OUTLET ON SUITABLE MS BOX SHALL BE USED WITH PROPER EARTHING.
  - ALL ELECTRICAL EQUIPMENT SHALL BE PROPER EARTHED AND CONNECTED TO MAIN EARTHING WITH SUITABLY SIZED EARTHING CONDUCTOR.
  - ALL SWITCH / SOCKET / DATA OUTLET PLATE COLOUR / FINISH TO BE MATCH WITH ARCHITECTURAL LAYOUT & ARCHITECT APPROVAL TO BE TAKEN PRIOR TO PRODUCT PROCUREMENT.
  - N-01: SOCKET OUTLETS TO BE FIXED AS PER SITE.
  - N-02: SOCKET OUTLETS TO BE FIXED WITH TV INSTALLATION FRAME / ROD.

ALL DIMENSIONS MUST BE CHECKED ON SITE INFORM THE ENGINEER OF ANY DISCREPANCIES PRIOR TO CONSTRUCTION

NOTES:  
IRRESPECTIVE OF THE DRAWING(S), IT IS THE CONTRACTOR'S OBLIGATION AND RESPONSIBILITY THAT SHALL BE EXECUTED AND COMPLETED IN ACCORDANCE TO THE SPECIFICATION, DRAWING(S) AS WELL AS REQUIREMENT. THE SAID DRAWING(S) SHALL NOT RELIEVE CONTRACTOR FROM ANY OBLIGATION UNDER THE CONTRACT AND IN PARTICULAR FROM ITS RESPONSIBILITY IN RELATION TO THE INSTALLATION MATERIALS AND WORKMANSHIP AND WHERE RELEVANT FROM A DUTY TO SEEK APPROVAL FROM THE COMPETENT AUTHORITY.



**02 KEY PLAN**  
NTS

T00 07.12.24 ISSUED FOR TENDER AK AS  
REV DATE DESCRIPTION DSN CHK



PROJECT  
F11-14 CHAI POINT, KFC & SUBWAY  
NOIDA INTERNATIONAL  
AIRPORT LIMITED,

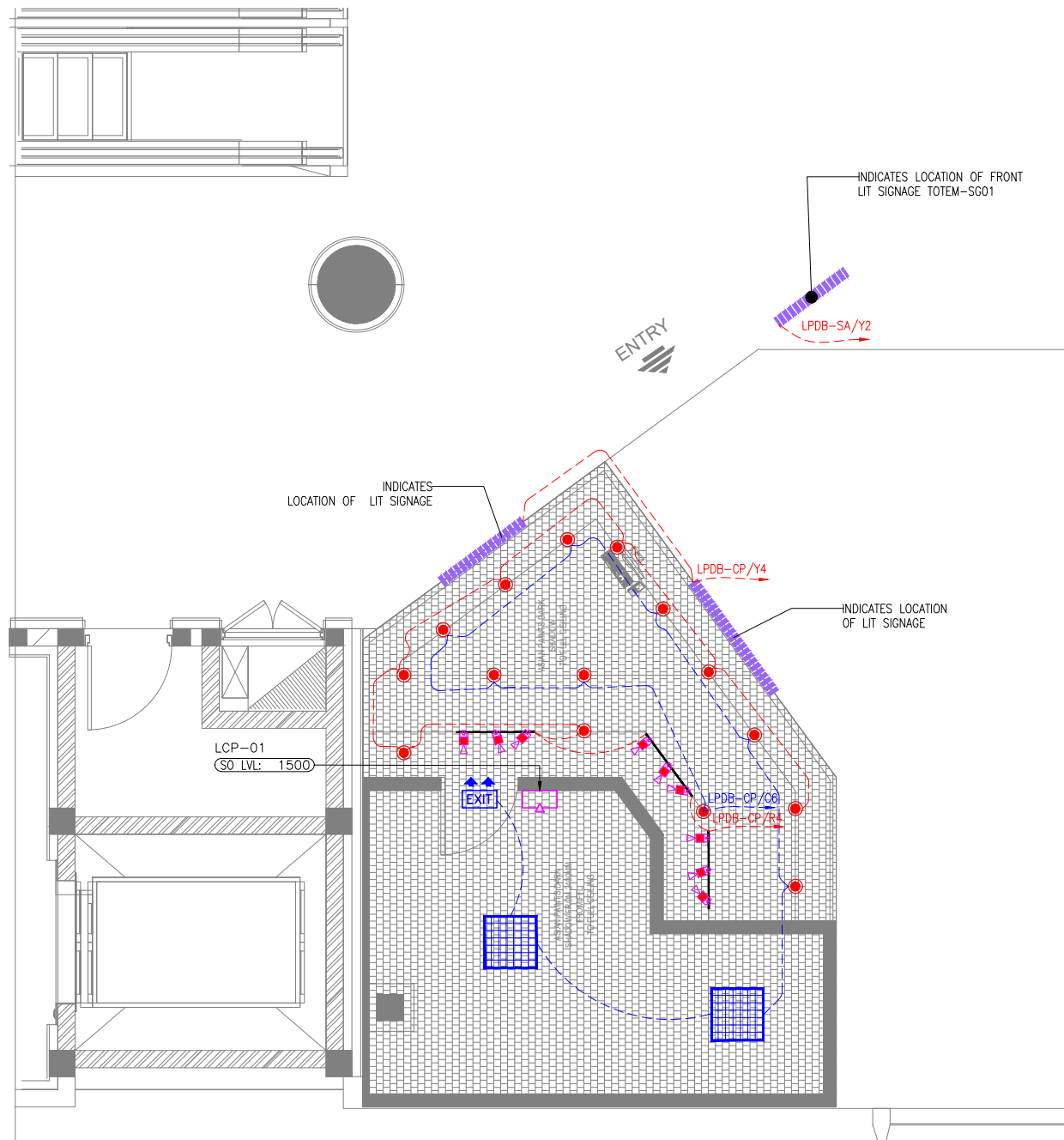
DRAWING TITLE  
POWER LAYOUT  
CHAI POINT

SCALE 1:100 DATE 07.12.24 DESIGNAK A3 SHEET

STATUS  
TENDER

ORG PROJECT NO DRAWING TYPE NUMBER REV  
TFS 0000 ELEC E302 T00

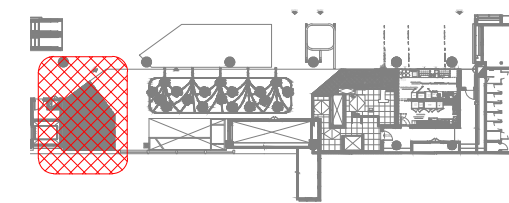




LIGHTING LEGEND				
SYMBOL	DESCRIPTION	CODE	WATTS	QTY
CHAI POINT				
●	CEILING SURFACE LIGHT TEMP:3000K	--	10	15
■	TRACK LIGHT TEMP:3000K	--	15	09
■	CEILING PANEL LIGHT TEMP:4000K	--	26	02
EXIT	EXIT LIGHT (WALL / CEILING MOUNTED)	--	08	01
	INDICATIVE SIGNAGE	--	100	--
□	LIGHTING CONTROL SWITCH POINT			--
---	LIGHTING NORMAL CIRCUIT			--
---	LIGHTING UPS CIRCUIT			--

ALL DIMENSIONS MUST BE CHECKED ON SITE  
INFORM THE ENGINEER OF ANY DISCREPANCIES PRIOR TO CONSTRUCTION

NOTES:  
IRRESPECTIVE OF THE DRAWING(S), IT IS THE CONTRACTOR'S OBLIGATION AND RESPONSIBILITY THAT SHALL BE EXECUTED AND COMPLETED IN ACCORDANCE TO THE SPECIFICATION, DRAWING(S) AS WELL AS REQUIREMENT. THE SAID DRAWING(S) SHALL NOT RELIEVE CONTRACTOR FROM ITS OBLIGATION UNDER THE CONTRACT AND IN PARTICULAR FROM ITS RESPONSIBILITY IN RELATION TO THE INSTALLATION MATERIALS AND WORKMANSHIP AND WHERE RELEVANT FROM A DUTY TO SEEK APPROVAL FROM THE COMPETENT AUTHORITY.



**02 KEY PLAN**  
NTS

REV	DATE	DESCRIPTION	AK	AS	DSN	CHK
T00	07.12.24	ISSUED FOR TENDER				



PROJECT  
F11-14 CHAI POINT, KFC & SUBWAY  
NOIDA INTERNATIONAL  
AIRPORT LIMITED,

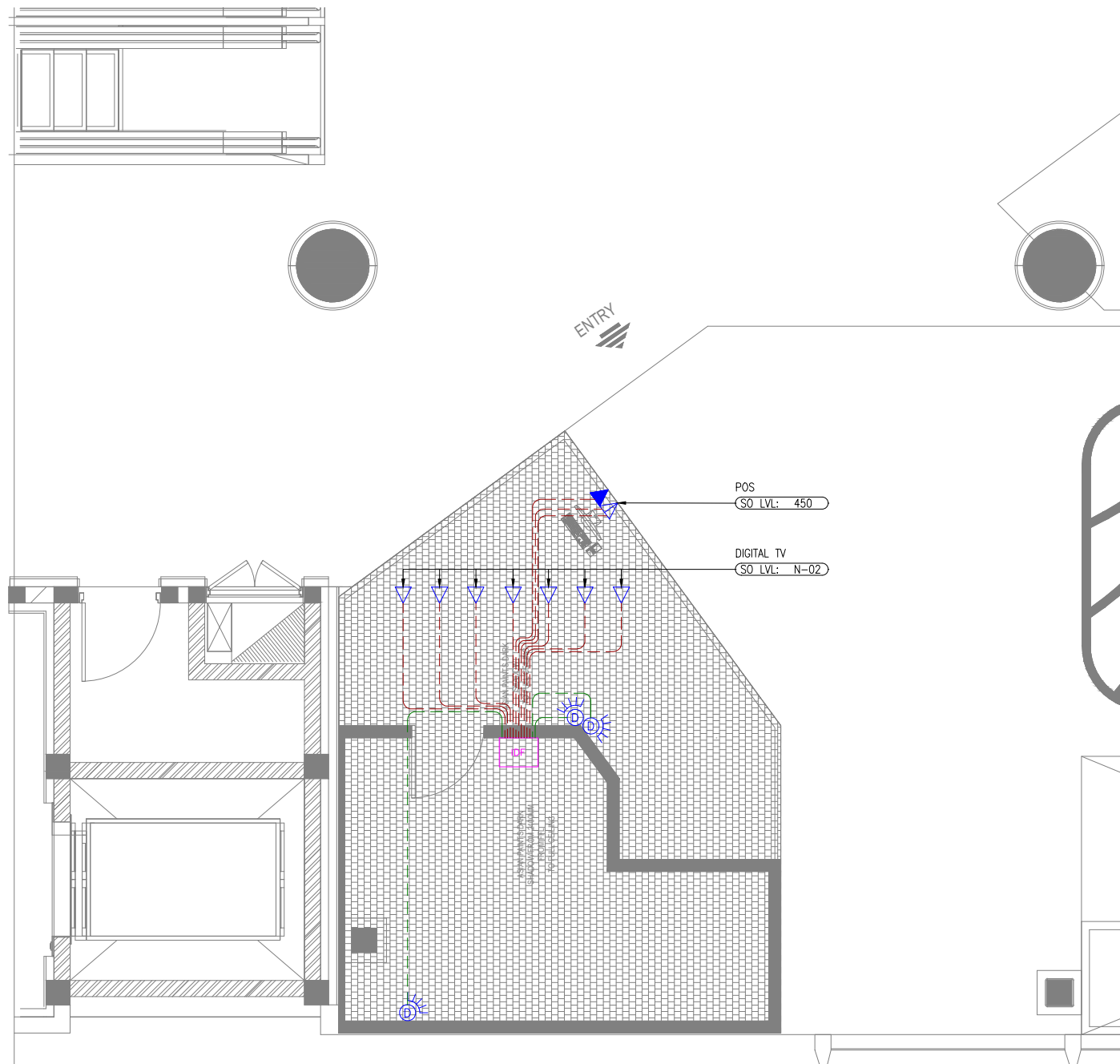
DRAWING TITLE  
LIGHTING LAYOUT  
CHAI POINT

SCALE 1:100    DATE 07.12.24    DESIGNAK    A3 SHEET

STATUS  
TENDER

ORG	PROJECT NO	DRAWING TYPE	NUMBER	REV
TFS	0000	ELEC	E401	T00

**01 LIGHTING LAYOUT-CHAI POINT**  
E401 1:100



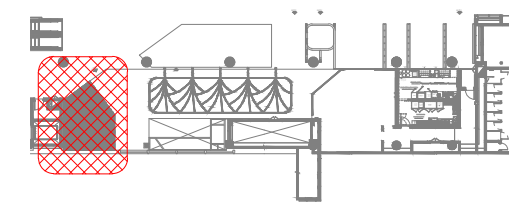
CCTV & DATA NETWORKING LEGENDS		
SYMBOL	DESCRIPTION	QTY
	DOME CCTV CAMERA - IP67 CEILING MOUNT	03
	SINGLE RJ45 DATA OUTLET	07
	DUAL RJ45 DATA OUTLET	01
	SINGLE TELEPHONE OUTLET (RJ11)	01
	INTERMEDIATE DISTRIBUTION FRAME (DATA NETWORK)	04
	CCTV CABLE	--
	DATA SYSTEM CABLE	--

**NOTES**

- ALL DIMENSIONS & LEVEL ARE IN "MM" OR OTHERWISE MENTIONED.
- N-01: SOCKET OUTLETS TO BE FIXED AS PER SITE.
- N-02: SOCKET OUTLETS TO BE FIXED WITH TV INSTALLATION FRAME / ROD.

ALL DIMENSIONS MUST BE CHECKED ON SITE  
INFORM THE ENGINEER OF ANY DISCREPANCIES PRIOR TO CONSTRUCTION

NOTES:  
IRRESPECTIVE OF THE DRAWING(S), IT IS THE CONTRACTOR'S OBLIGATION AND RESPONSIBILITY THAT SHALL BE EXECUTED AND COMPLETED IN ACCORDANCE TO THE SPECIFICATION, DRAWING(S) AS WELL AS REQUIREMENT. THE SAID DRAWING(S) SHALL NOT RELIEVE CONTRACTOR FROM ANY OBLIGATION UNDER THE CONTRACT AND IN PARTICULAR FROM ITS RESPONSIBILITY IN RELATION TO THE INSTALLATION MATERIALS AND WORKMANSHIP AND WHERE RELEVANT FROM A DUTY TO SEEK APPROVAL FROM THE COMPETENT AUTHORITY.



**02 KEY PLAN**  
NTS

**01 CCTV & DATA LAYOUT-CHAI POINT**  
E501 1:100

T00	07.12.24	ISSUED FOR TENDER	TT	AS
REV	DATE	DESCRIPTION	DSN	CHK



PROJECT  
**FOOD HUB  
NOIDA INTERNATIONAL  
AIRPORT LIMITED,**

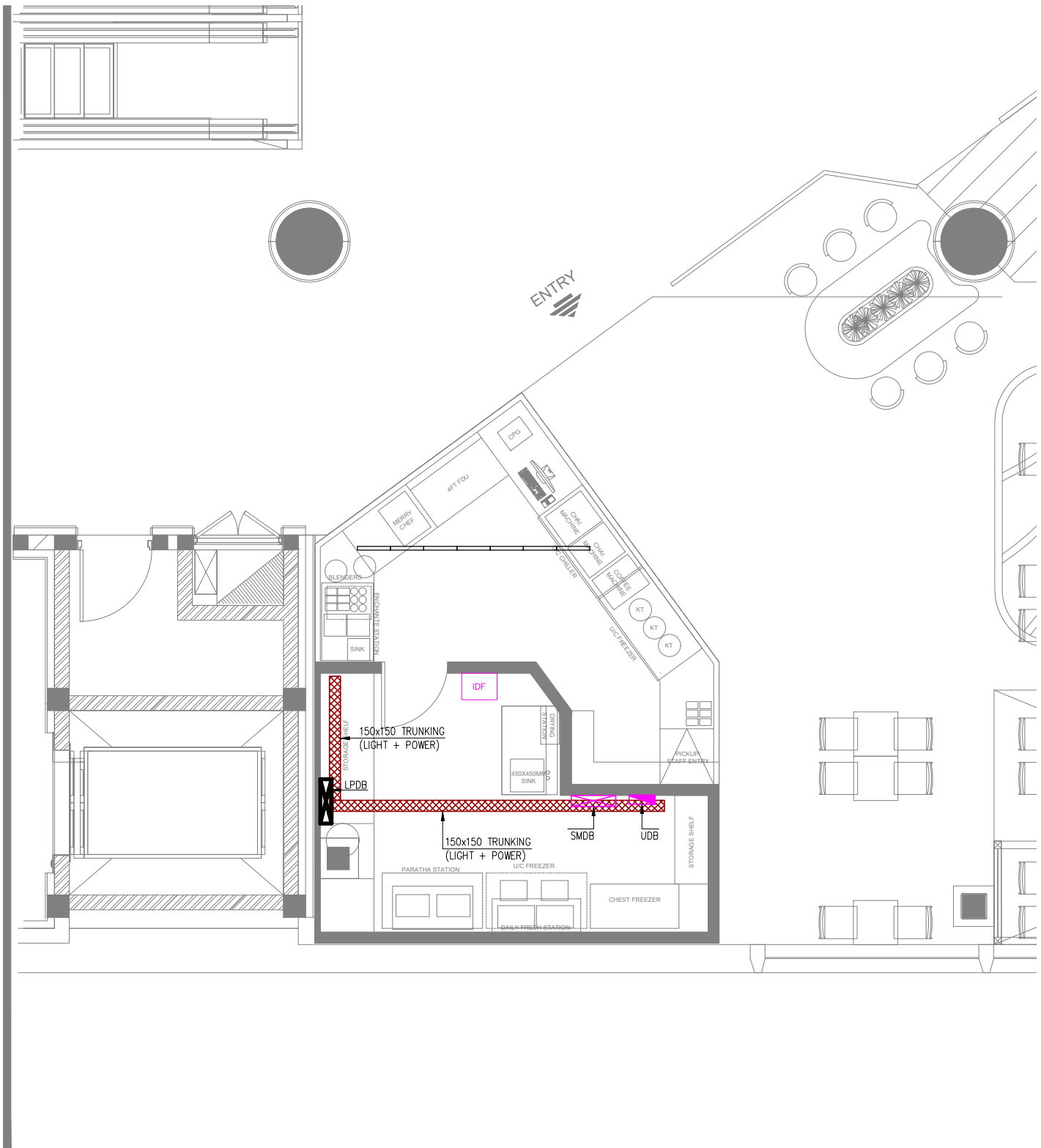
DRAWING TITLE  
**CCTV & DATA LAYOUT  
CHAI POINT**

SCALE	1:100	DATE	07.12.24	DESIGN/TT	A3 SHEET
-------	-------	------	----------	-----------	----------

STATUS

**TENDER**

ORG	PROJECT NO	DRAWING TYPE	NUMBER	REV
TFS	0000	ELEC	E501	T00



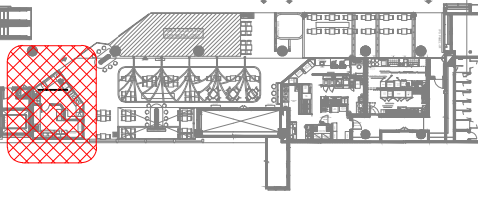
**01** CONTAINMENT LAYOUT-CHAI POINT  
E601 1:75

RACEWAY / CONTAINMENT LEGEND		
SYMBOL	DESCRIPTION	QTY
	CABLE TRUNKING (LIGHTING & LIGHTING)	--
	CABLE TRUNKING (CCTV & DATA)	--
	25 MM GI CONDUIT THROUGH FLOOR(CCTV&DATA)	--
	25MM GI CONDUIT THROUGH FLOOR SCREED(LIGHT & POWER)	--
	32 MM GI CONDUIT THROUGH FLOOR(LIGHT & POWER)	--
	UDB - UPS DISTRIBUTION BOARD	01
	SUB MAIN DISTRIBUTION BOARD (SMDB) & LPDB	01
	INTERMEDIATE DISTRIBUTION FRAME (DATA NETWORK)	01

- NOTES**
- ALL DIMENSIONS & LEVEL ARE IN "MM" OR OTHERWISE MENTIONED.
  - HEAVY DUTY PVC CONDUITS OF SUITABLE DIAMETER TO BE USED FOR ALL LIGHTING & POWER CABLING BETWEEN LIGHT / POWER POINT TO DB.
  - CONTRACTOR TO FOLLOW AIRPORT MEP GUIDELINES FOR MATERIAL MAKE & SPECIFICATION.
  - CABLE TRAY & TRUNKING ROUTES ARE INDICATIVE ONLY, TO BE COORDINATED WITH OTHER SERVICES.
  - THE CONTRACTOR IS EXPECTED TO DEVELOP THE ACTUAL ROUTING DETAILS OF THESE AT SITE BASED ON SITE CONDITION. IT IS IMPORTANT TO ENSURE THAT THESE SERVICES ARE NOT VISIBLE TO CUSTOMERS, CAN BE ACCESSED IN FUTURE FOR MAINTENANCE AND ARE NOT DETRIMENTAL TO THE UNIT.

ALL DIMENSIONS MUST BE CHECKED ON SITE  
INFORM THE ENGINEER OF ANY DISCREPANCIES PRIOR TO CONSTRUCTION

NOTES:  
IRRESPECTIVE OF THE DRAWING(S), IT IS THE CONTRACTOR'S OBLIGATION AND RESPONSIBILITY THAT SHALL BE EXECUTED AND COMPLETED IN ACCORDANCE TO THE SPECIFICATION, DRAWING(S) AS WELL AS REQUIREMENT. THE SAID DRAWING(S) SHALL NOT RELIEVE CONTRACTOR FROM ANY OBLIGATION UNDER THE CONTRACT AND IN PARTICULAR FROM ITS RESPONSIBILITY IN RELATION TO THE INSTALLATION MATERIALS AND WORKMANSHIP AND WHERE RELEVANT FROM A DUTY TO SEEK APPROVAL FROM THE COMPETENT AUTHORITY.



**02** KEY PLAN  
NTS

T00 07.12.24	ISSUED FOR TENDER	TT AS
REV DATE	DESCRIPTION	DSN CHK



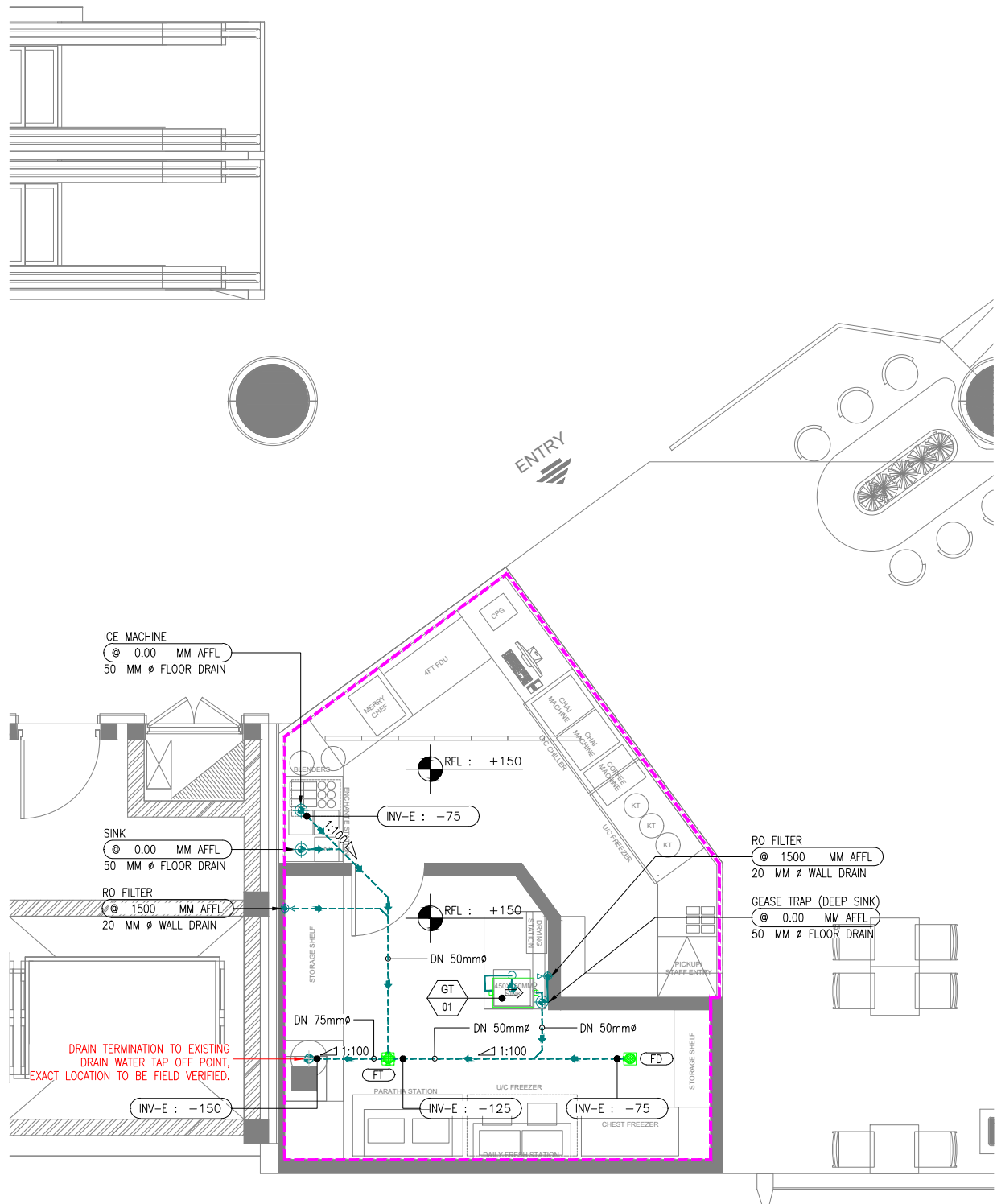
PROJECT  
F11-14 CHAI POINT, KFC & SUBWAY  
NOIDA INTERNATIONAL  
AIRPORT LIMITED,

DRAWING TITLE  
CONTAINMENT LAYOUT  
CHAI POINT

SCALE 1:75	DATE 07.12.24	DESIGN TT	A3 SHEET
------------	---------------	-----------	----------

STATUS  
TENDER

ORG	PROJECT NO	DRAWING TYPE	NUMBER	REV
TFS	0000	ELEC	E601	T00



ALL DIMENSIONS MUST BE CHECKED ON SITE  
INFORM THE ENGINEER OF ANY DISCREPANCIES PRIOR TO CONSTRUCTION

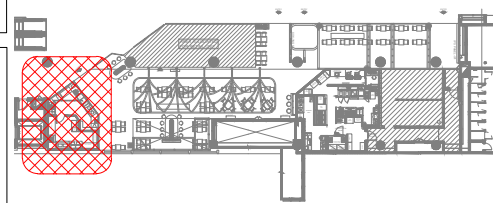
NOTES:  
IRRESPECTIVE OF THE DRAWING(S), IT IS THE CONTRACTOR'S OBLIGATION AND RESPONSIBILITY THAT SHALL BE EXECUTED AND COMPLETED IN ACCORDANCE TO THE SPECIFICATION, DRAWING(S) AS WELL AS REQUIREMENT. THE SAID DRAWING(S) SHALL NOT RELIEVE CONTRACTOR FROM ANY OBLIGATION UNDER THE CONTRACT AND IN PARTICULAR FROM ITS RESPONSIBILITY IN RELATION TO THE INSTALLATION MATERIALS AND WORKMANSHIP AND WHERE RELEVANT FROM A DUTY TO SEEK APPROVAL FROM THE COMPETENT AUTHORITY.

PLUMBING DRAINAGE SYSTEM LEGEND	
SYMBOL	DESCRIPTION
	WASTE WATER PIPE
	WASTE DRAIN TERMINATION ON WALL – WD
	FLOOR DRAIN TERMINATION PIPE UP-STAND AFFL – FDP
	MULTI FLOOR TRAP – FT
	FLOOR DRAIN – FD
	GREASE TRAP (PORTABLE)
	EXISTING WASTE WATER PIPE TAP-OFF POINT
	AIR ADMITTANCE VALVE – AAV
	FLOOR RISE REQUIRED AREA (150mm RFL)
	FLOOR RISE TAG (RISE FROM FLOOR SLAB TO FFL)
	PIPE INVERT ELEVATION (DROP FROM FINISHED FL)

- NOTES:
- PIPE WORKS AND FITTINGS SHALL COMPLY WITH THE DRAWINGS AND LOCAL AUTHORITIES REQUIREMENTS.
  - ALL PIPES SHALL BE SUITABLY SUPPORTED AND PROVIDED WITH CLEANOUTS FOR RODDING WERE EVER NECESSARY.
  - ALL PLUMBING FIXTURES & DRAIN SHOULD HAVE SUITABLE WATER TRAPS TO PREVENT THE ESCAPE OF FOUL AIR INTO THE BUILDING.
  - ANY GREASE GENERATING FIXTURE SHALL BE CONNECTED TO UNDER COUNTER GREASE TRAP/ INTERCEPTOR BEFORE CONNECTING TO BASE BUILD STUB OUT.
  - DRAIN SLOPE MAY VARIES DEPENDING UPON SITE CONDITION AND TO MATCH WITH THE FLOOR RISE PROVIDED BY THE ARCHITECT.
  - ALL THE DRAINAGE PIPE WORK SHALL BE OF UPVC TYPE-A.
  - ALL PROPOSED DRAIN TAP-OFF POINT ELEVATIONS ARE MARKED FROM RAISED FLOOR LVL.
  - STRAINERS SHALL BE PROVIDED AT ALL THE DRAIN POINTS.
  - PLEASE NOTE PIPE WORK AND EQUIPMENT MAY BE SHOWN DISPLACED FOR THE CLARITY OF DRAWING.
  - A MIN 1:100 SLOPE SHALL BE MAINTAINED FOR EVERY DRAIN PIPE RUNS THROUGH WALL AND BELOW RAISED FLOOR UPTO THE DRAINAGE TAP-OFF POINT.

DRAINAGE ABBREVIATIONS			
GT	GREASE TRAP	FD	FLOOR DRAIN
FT	FLOOR TRAP	AAV	AIR ADMITTANCE VALVE
DN	NOMINAL DIA	RFL	RAISED FLOOR LEVEL

WATER SUPPLY PIPING LEGEND			
SYMBOL	DESCRIPTION	SYMBOL	DESCRIPTION
	COLD WATER SUPPLY		ELBOW DOWN
	CONTENSATE DRAIN PIPE		ELBOW UP
	WASTE VENT PIPE		TOP CONNECTION
	PIPE RUNS BELOW CEILING		BOTTOM CONNECTION
	PIPE RUNS THROUGH WALL		FLOW DIRECTION
	PIPE RUNS BELOW RAISED FLOOR		REDUSER



02 KEY PLAN  
NTS

T00 07.12.24 ISSUED FOR TENDER HS RR  
REV DATE DESCRIPTION DSN CHK



PROJECT  
F11-14 CHAI POINT, KFC & SUBWAY  
NOIDA INTERNATIONAL  
AIRPORT LIMITED,

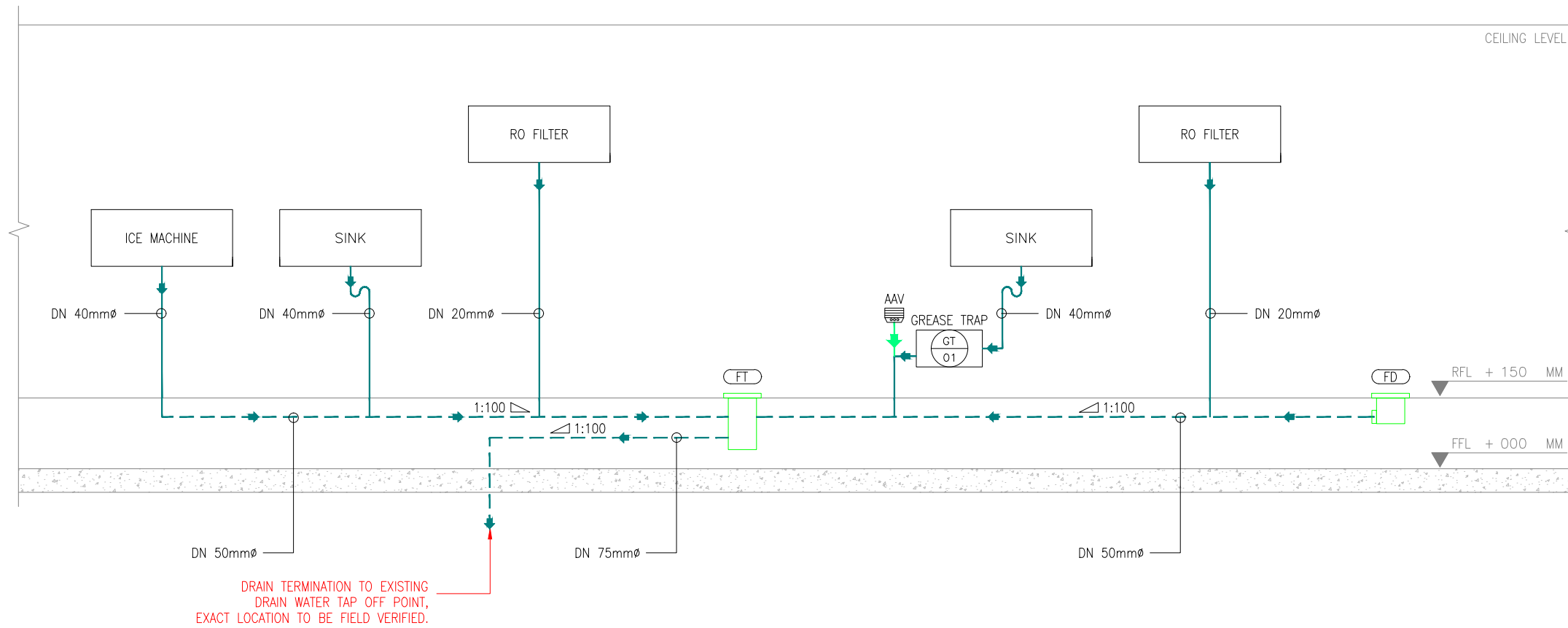
DRAWING TITLE  
DRAINAGE LAYOUT  
CHAI POINT

SCALE 1:100 DATE 07.12.24 DESIGNHS A3 SHEET

STATUS  
TENDER  
ORG PROJECT NO DRAWING TYPE NUMBER REV  
TFS 0000 PLUM P101 T00

ALL DIMENSIONS MUST BE CHECKED ON SITE  
INFORM THE ENGINEER OF ANY DISCREPANCIES PRIOR TO CONSTRUCTION

NOTES:  
IRRESPECTIVE OF THE DRAWING(S), IT IS THE CONTRACTOR'S OBLIGATION AND RESPONSIBILITY THAT SHALL BE EXECUTED AND COMPLETED IN ACCORDANCE TO THE SPECIFICATION, DRAWING(S) AS WELL AS REQUIREMENT. THE SAID DRAWING(S) SHALL NOT RELIEVE CONTRACTOR FROM ITS OBLIGATION UNDER THE CONTRACT AND IN PARTICULAR FROM ITS RESPONSIBILITY IN RELATION TO THE INSTALLATION MATERIALS AND WORKMANSHIP AND WHERE RELEVANT FROM A DUTY TO SEEK APPROVAL FROM THE COMPETENT AUTHORITY.



**01** DRAINAGE SCHEMATIC LAYOUT - CHAI POINT  
P102 NTS

T00 07.12.24 ISSUED FOR TENDER HS RR  
REV DATE DESCRIPTION DSN CHK



PROJECT  
F11-14 CHAI POINT, KFC & SUBWAY  
NOIDA INTERNATIONAL  
AIRPORT LIMITED,

DRAWING TITLE  
DRAINAGE SCHEMATIC LAYOUT  
CHAI POINT

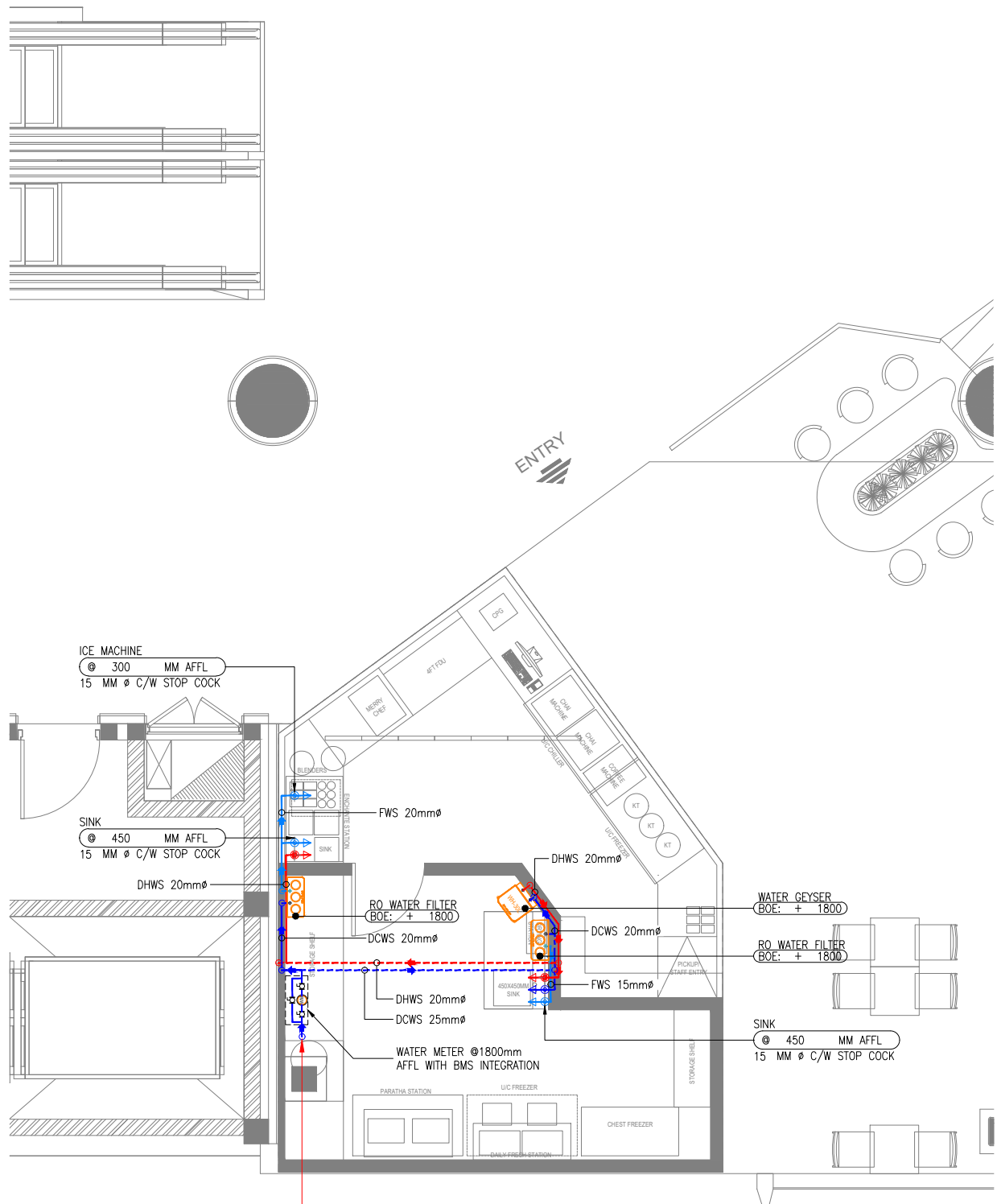
SCALE NTS DATE 07.12.24 DESIGNHS A3 SHEET

STATUS  
TENDER

ORG PROJECT NO DRAWING TYPE NUMBER REV  
TFS 0000 PLUM P102 T00

WATER SUPPLY PIPING LEGEND			
SYMBOL	DESCRIPTION	SYMBOL	DESCRIPTION
	COLD WATER SUPPLY		ELBOW DOWN
	CONTENSATE DRAIN PIPE		ELBOW UP
	WASTE VENT PIPE		TOP CONNECTION
	PIPE RUNS BELOW CEILING		BOTTOM CONNECTION
	PIPE RUNS THROUGH WALL		FLOW DIRECTION
	PIPE RUNS BELOW RAISED FLOOR		REDUSER





25mm $\varnothing$  DWS PIPE TO BE CONNECTED TO EXISTING WATER SUPPLY TAP OFF POINT EXACT LOCATION TO BE FIELD VERIFIED.

**01 WATER SUPPLY LAYOUT - CHAI POINT**  
P201 1:75

PLUMBING WATER SUPPLY SYSTEM LEGEND	
SYMBOL	DESCRIPTION
	COLD WATER SUPPLY PIPE
	FILTERED/RO WATER SUPPLY PIPE
	HOT WATER SUPPLY PIPE
	COLD WATER SUPPLY INLET WITH ANGLE VALVE
	FILTERED/RO WATER SUPPLY INLET WITH ANGLE VALVE
	HOT WATER SUPPLY INLET WITH ANGLE VALVE
	RO WATER FILTER
	WATER HEATER - 30 L
	WATER METER
	BALL VALVE

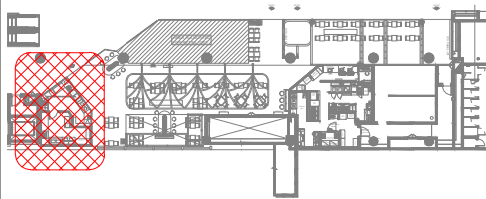
- NOTES:**
- PIPE WORKS AND FITTINGS SHALL COMPLY WITH THE DRAWINGS AND LOCAL AUTHORITIES REQUIREMENTS.
  - CONNECT NEW COLD WATER PIPE TO EXISTING RISER LOCATED ON FLOOR LEVEL. FIELD VERIFY EXISTING LOCATION.
  - ASSUMING WATER SUPPLIED TO SITE IS QUALITY WATER THE EQUIPMENT REQUIRED RO WATER ARE SUPPLIED C/W WATER FILTRATION UNIT HOPING WATER SUPPLY HAVE ENOUGH PRESSURE.
  - FINAL WATER FILTRATION SYSTEMS, WILL BE DESIGNED BY SPECIALIST VENDORS.
  - ALL PROPOSED WATER SUPPLY TAP-OFF POINT ELEVATIONS ARE MARKED FROM RASIED FLOOR LVL.
  - PLEASE NOTE PIPE WORK AND EQUIPMENT MAY BE SHOWN DISPLACED FOR THE CLARITY OF DRAWINGS.
  - WATER METER AND VALVE ACCESSORIES ARE BELOW 200MM FROM FALSE CEILING FOR MAINTENANCE AND READING PURPOSES.
  - WATER METER & TOTALISER SHALL BE INSTALLED INSIDE BOXED CANOPY FOR FUTURE ACCESIBILITY AND MONTHLY READING. (EXACT LOCATION TO BE COORDINATED AT SITE & WITH ID DESIGN).
  - WATER METER & TOTALISER SHALL BE INTEGRATED WITH BMS.
  - BRASS BALL VALVE SHALL BE PROVIDED AFTER THE WATER METER.

WATER SUPPLY ABBREVIATIONS			
WB	WATER BOILER	C/W	CONTINUED WITH
WG	WATER GEYSER	FWS	FILTERED WATER SUPPLY
WFU	WATER FILTRATION UNIT	DHWS	DOMESTIC HOT WATER SUPPLY
WM	WATER METER	DCWS	DOMESTIC COLD WATER SUPPLY
BV	BALL VALVE	DN	NOMINAL DIA

WATER SUPPLY PIPING LEGEND			
SYMBOL	DESCRIPTION	SYMBOL	DESCRIPTION
	ELBOW DOWN		COLD WATER SUPPLY
	ELBOW UP		HOT WATER SUPPLY
	TOP CONNECTION		RO FILTERED WATER SUPPLY
	BOTTOM CONNECTION		PIPE RUNS BELOW CEILING
	FLOW DIRECTION		PIPE RUNS THROUGH WALL
	REDUSER		PIPE RUNS BELOW RAISED FLOOR

ALL DIMENSIONS MUST BE CHECKED ON SITE  
INFORM THE ENGINEER OF ANY DISCREPANCIES PRIOR TO CONSTRUCTION

**NOTES:**  
IRRESPECTIVE OF THE DRAWING(S), IT IS THE CONTRACTOR'S OBLIGATION AND RESPONSIBILITY THAT SHALL BE EXECUTED AND COMPLETED IN ACCORDANCE TO THE SPECIFICATION, DRAWING(S) AS WELL AS REQUIREMENT. THE SAID DRAWING(S) SHALL NOT RELIEVE CONTRACTOR FROM ITS OBLIGATION UNDER THE CONTRACT AND IN PARTICULAR FROM ITS RESPONSIBILITY IN RELATION TO THE INSTALLATION MATERIALS AND WORKMANSHIP AND WHERE RELEVANT FROM A DUTY TO SEEK APPROVAL FROM THE COMPETENT AUTHORITY.



**02 KEY PLAN**  
P201 NTS

T00 07.12.24 ISSUED FOR TENDER HS RR  
REV DATE DESCRIPTION DSN CHK



PROJECT  
**F11-14 CHAI POINT, KFC & SUBWAY  
NOIDA INTERNATIONAL  
AIRPORT LIMITED,**

DRAWING TITLE  
**WATER SUPPLY LAYOUT  
CHAI POINT**

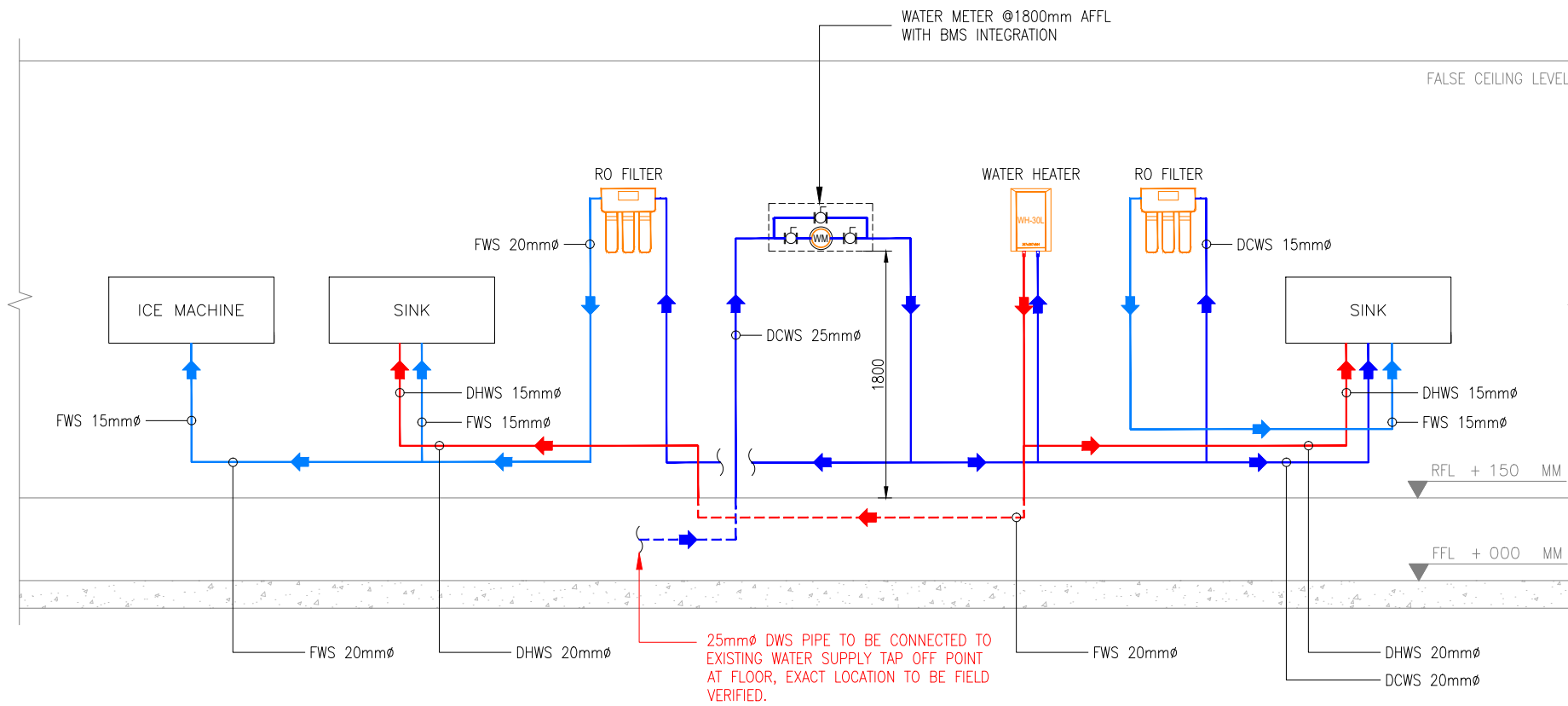
SCALE 1:100 DATE 07.12.24 DESIGNHS A3 SHEET

STATUS  
**TENDER**

ORG PROJECT NO DRAWING TYPE NUMBER REV  
**TFS 0000 PLUM P201 T00**

ALL DIMENSIONS MUST BE CHECKED ON SITE  
INFORM THE ENGINEER OF ANY DISCREPANCIES PRIOR TO CONSTRUCTION

NOTES:  
IRRESPECTIVE OF THE DRAWING(S), IT IS THE CONTRACTOR'S OBLIGATION AND RESPONSIBILITY THAT SHALL BE EXECUTED AND COMPLETED IN ACCORDANCE TO THE SPECIFICATION, DRAWING(S) AS WELL AS REQUIREMENT. THE SAID DRAWING(S) SHALL NOT RELIEVE CONTRACTOR FROM ITS OBLIGATION UNDER THE CONTRACT AND IN PARTICULAR FROM ITS RESPONSIBILITY IN RELATION TO THE INSTALLATION MATERIALS AND WORKMANSHIP AND WHERE RELEVANT FROM A DUTY TO SEEK APPROVAL FROM THE COMPETENT AUTHORITY.



**01** WATER SUPPLY SCHEMATIC LAYOUT - CHAI POINT  
P202 NTS

WATER SUPPLY PIPING LEGEND			
SYMBOL	DESCRIPTION	SYMBOL	DESCRIPTION
	ELBOW DOWN		COLD WATER SUPPLY
	ELBOW UP		HOT WATER SUPPLY
	TOP CONNECTION		RO FILTERED WATER SUPPLY
	BOTTOM CONNECTION		PIPE RUNS BELOW CEILING
	FLOW DIRECTION		PIPE RUNS THROUGH WALL
	REDUSER		PIPE RUNS BELOW RAISED FLOOR

T00 07.12.24 ISSUED FOR TENDER HS RR  
REV DATE DESCRIPTION DSN CHK



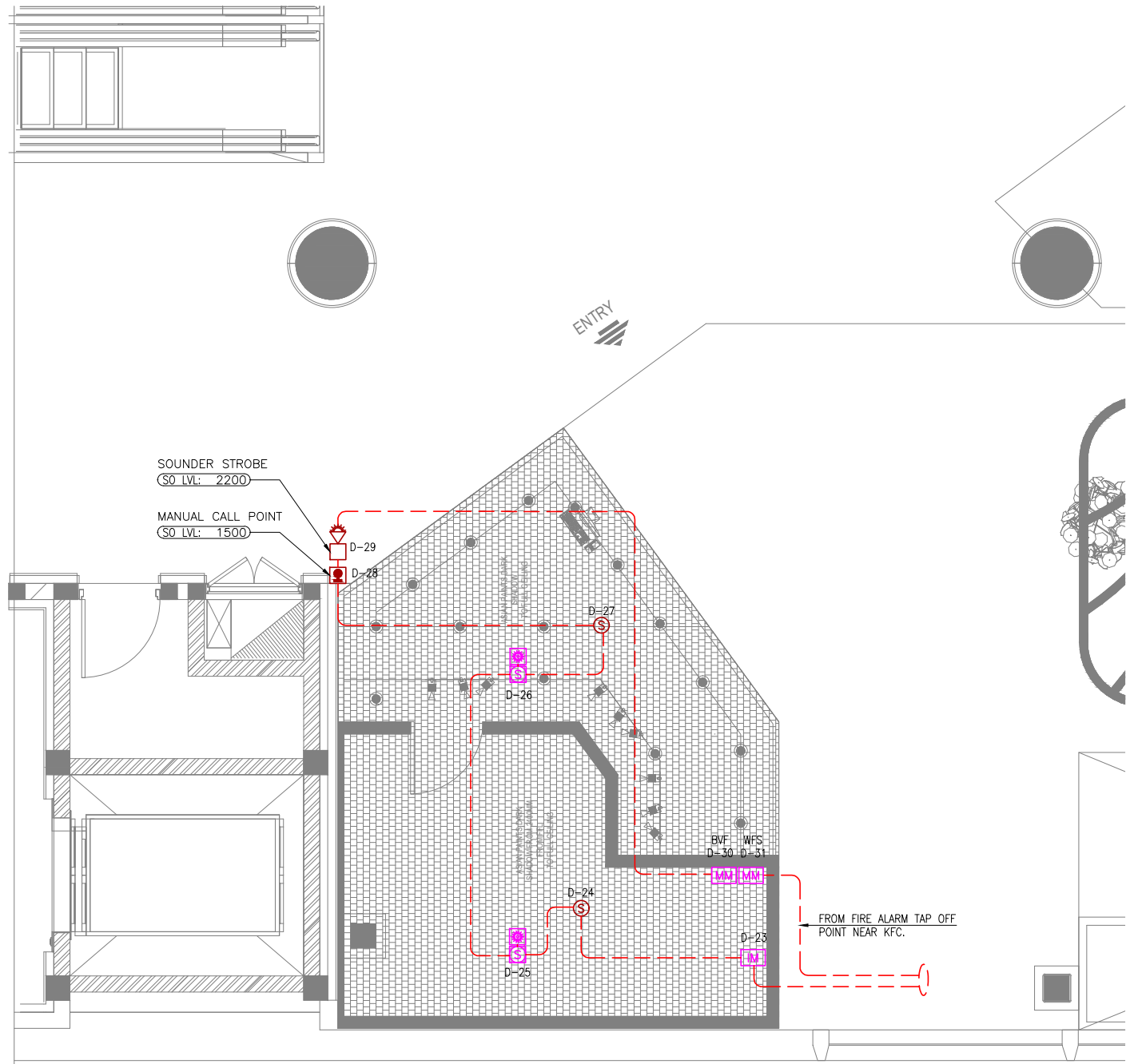
PROJECT  
F11-14 CHAI POINT, KFC & SUBWAY  
NOIDA INTERNATIONAL  
AIRPORT LIMITED,

DRAWING TITLE  
WATER SUPPLY  
SCHEMATIC LAYOUT  
CHAI POINT

SCALE NTS DATE 07.12.24 DESIGNHS A3 SHEET

STATUS  
TENDER

ORG PROJECT NO DRAWING TYPE NUMBER REV  
TFS 0000 PLUM P202 T00



FIRE ALARM LEGEND		
SYMBOL	DESCRIPTION	QTY
	SMOKE DETECTOR (CEILING MOUNTED)	02
	MANUAL CALL POINT	01
	FIRE ALARM LOOP SOUNDER STROBE	01
	SMOKE DETECTOR (CEILING VOID)	02
	RESPONSE INDICATOR	02
	MONITOR MODULE	02
	ISOLATION MODULE	01
	FIRE ALARM CIRCUIT	--

**NOTES**

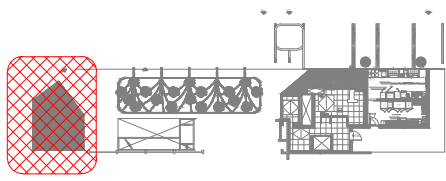
- ALL DIMENSIONS & LEVELS ARE IN "MM" OR OTHERWISE SPECIFIED.
- HOOTER PANEL & FIRE DETECTION SYSTEM WILL BE LOOPED INDEPENDENTLY ON SEPARATE PANEL.

**ABBREVIATIONS**

- BFV - BUTTERFLY VALVE
- WFS - WATER FLOW SWITCH

ALL DIMENSIONS MUST BE CHECKED ON SITE  
INFORM THE ENGINEER OF ANY DISCREPANCIES PRIOR TO CONSTRUCTION

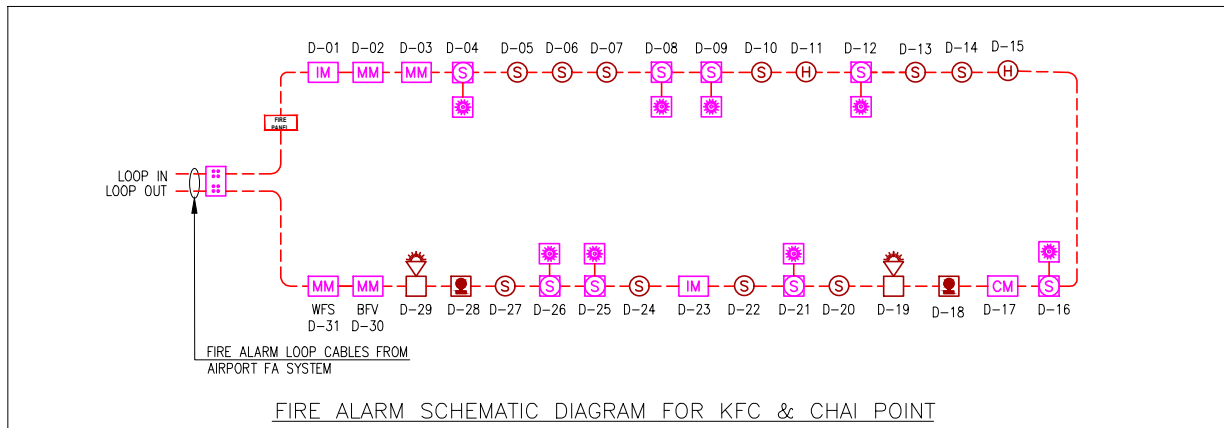
NOTES:  
IRRESPECTIVE OF THE DRAWING(S), IT IS THE CONTRACTOR'S OBLIGATION AND RESPONSIBILITY THAT SHALL BE EXECUTED AND COMPLETED IN ACCORDANCE TO THE SPECIFICATION, DRAWING(S) AS WELL AS REQUIREMENT. THE SAID DRAWING(S) SHALL NOT RELIEVE CONTRACTOR FROM ANY OBLIGATION UNDER THE CONTRACT AND IN PARTICULAR FROM ITS RESPONSIBILITY IN RELATION TO THE INSTALLATION MATERIALS AND WORKMANSHIP AND WHERE RELEVANT FROM A DUTY TO SEEK APPROVAL FROM THE COMPETENT AUTHORITY.



**02 KEY PLAN**  
NTS

**01 FIRE ALARM LAYOUT-CHAI POINT**  
F101 1:100

T00 07.12.24 ISSUED FOR TENDER AK AS  
REV DATE DESCRIPTION DSN CHK



PROJECT  
**F11-14 CHAI POINT, KFC & SUBWAY  
NOIDA INTERNATIONAL  
AIRPORT LIMITED,**

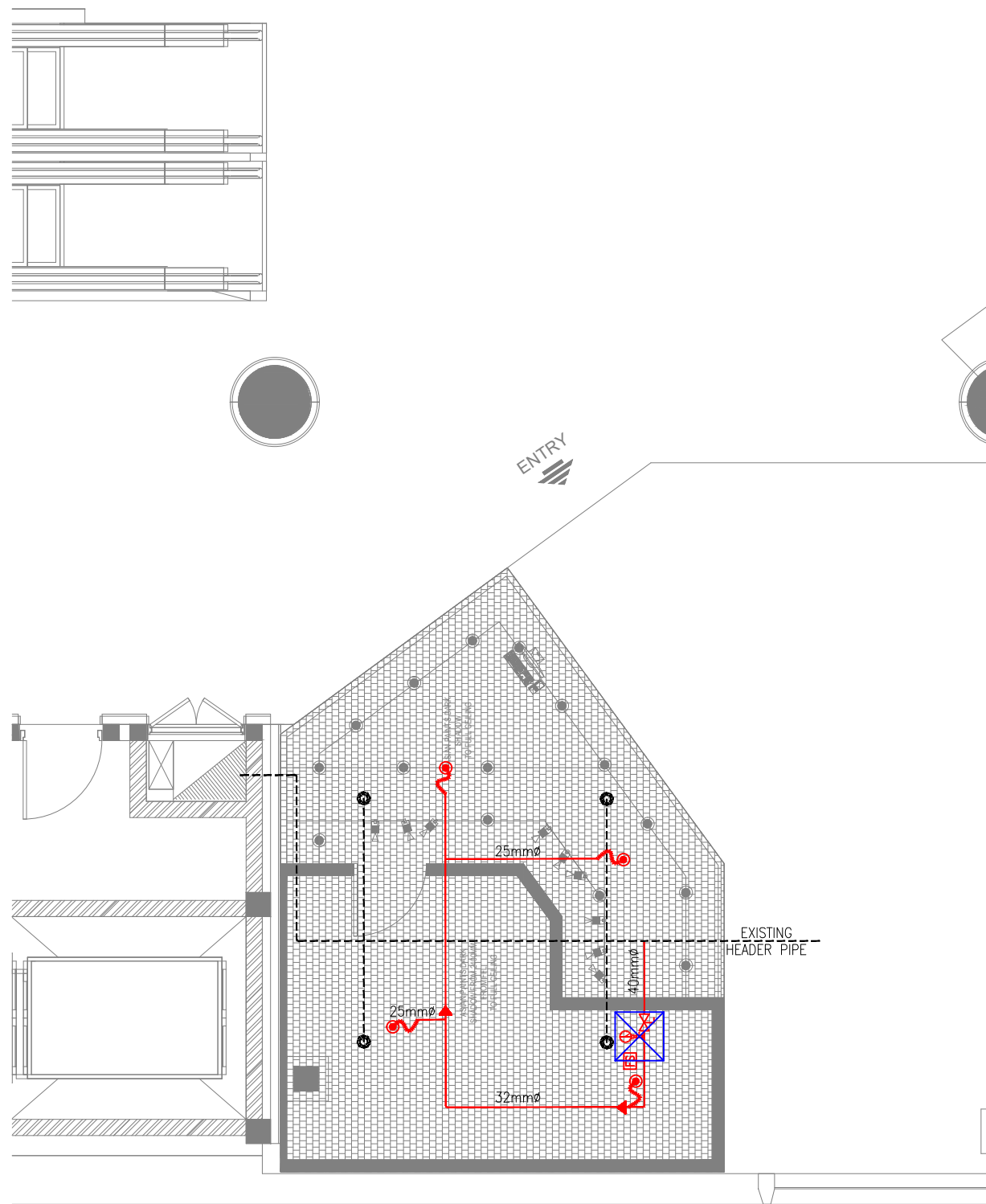
DRAWING TITLE  
**FIRE ALARM LAYOUT  
CHAI POINT**

SCALE 1:100 DATE 07.12.24 DESIGNAK A3 SHEET

STATUS  
**TENDER**

ORG PROJECT NO DRAWING TYPE NUMBER REV  
**TFS 0000 FIRE F101 T00**

FIRE ALARM SCHEMATIC DIAGRAM FOR KFC & CHAI POINT



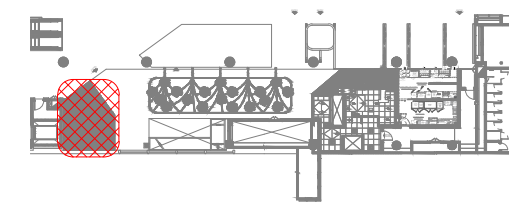
**01** FIRE SPRINKLER LAYOUT- CHAI POINT  
F201 1:75

FIRE SPRINKLER SYSTEM LEGEND		
SYMBOL	DESCRIPTION	QTY
	EXISTING SPRINKLER HEAD UPRIGHT	--
	SPRINKLER HEAD PENDENT	04
	SPRINKLER PIPE	--
	SPRINKLER PIPE EXISTING	--
	SPRINKLER PIPE FLEXIBLE CONNECTION	--
	SPRINKLER BUTTERFLY VALVE (ISOLATION VALVE)	--
	SPRINKLER PIPE FLOW SWITCH	01
	SPRINKLER PIPE REDUCER	--
	PRESSURE GAUGE	01
	SPRINKLER BALL VALVE - TEST DRAIN	01
	ACCESS DOOR	01

- ELBOW DOWN
- ELBOW UP
- TOP CONNECTION
- BOTTOM CONNECTION
- FIRE SPRINKLER SERVICE

ALL DIMENSIONS MUST BE CHECKED ON SITE  
INFORM THE ENGINEER OF ANY DISCREPANCIES PRIOR TO CONSTRUCTION

NOTES:  
IRRESPECTIVE OF THE DRAWING(S), IT IS THE CONTRACTOR'S OBLIGATION AND RESPONSIBILITY THAT SHALL BE EXECUTED AND COMPLETED IN ACCORDANCE TO THE SPECIFICATION, DRAWING(S) AS WELL AS REQUIREMENT. THE SAID DRAWING(S) SHALL NOT RELIEVE CONTRACTOR FROM ANY OBLIGATION UNDER THE CONTRACT AND IN PARTICULAR FROM ITS RESPONSIBILITY IN RELATION TO THE INSTALLATION MATERIALS AND WORKMANSHIP AND WHERE RELEVANT FROM A DUTY TO SEEK APPROVAL FROM THE COMPETENT AUTHORITY.



**02** KEY PLAN  
NTS

T00 07.12.24 ISSUED FOR TENDER MB RR  
REV DATE DESCRIPTION DSN CHK



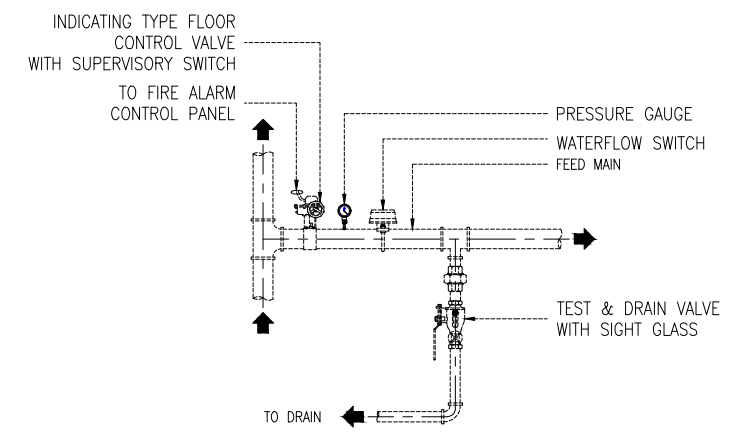
PROJECT  
F11-14 CHAI POINT, KFC & SUBWAY  
NOIDA INTERNATIONAL  
AIRPORT LIMITED,

DRAWING TITLE  
FIRE SPRINKLER LAYOUT  
CHAI POINT

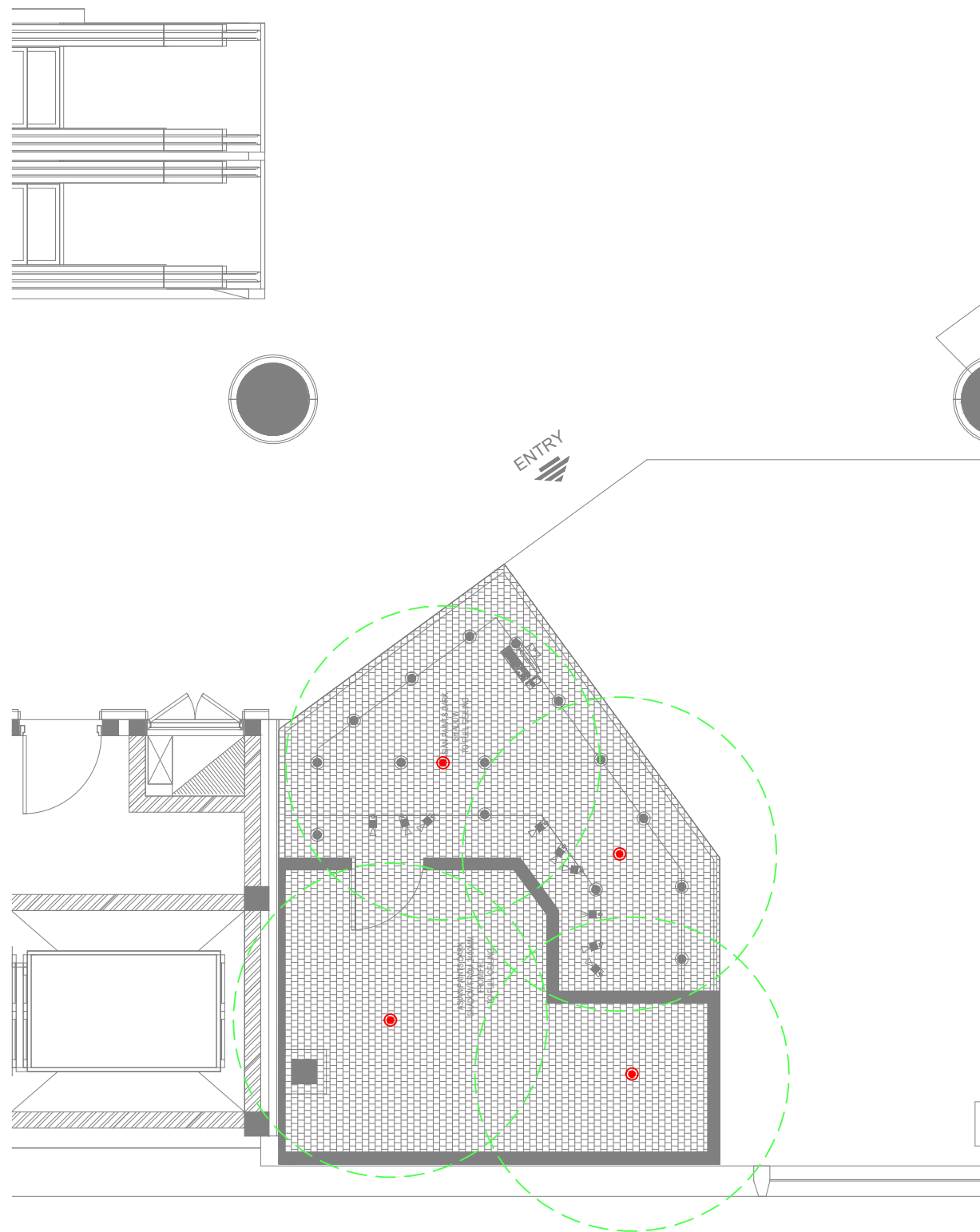
SCALE 1:100 DATE 07.12.24 DESIGNMB A3 SHEET

STATUS  
TENDER

ORG PROJECT NO DRAWING TYPE NUMBER REV  
TFS 0000 FIRE F201 T00



**02** ZONAL VALVE DETAILS  
F202 NTS

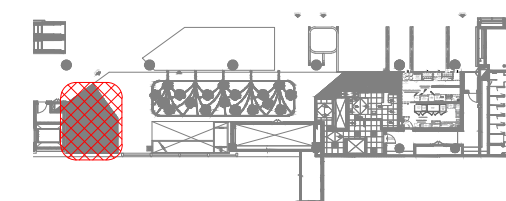


FIRE SPRINKLER SYSTEM LEGEND		
SYMBOL	DESCRIPTION	QTY
	EXISTING SPRINKLER HEAD UPRIGHT	--
	SPRINKLER HEAD PENDENT	04
	SPRINKLER PIPE	--
	SPRINKLER PIPE EXISTING	--
	SPRINKLER PIPE FLEXIBLE CONNECTION	--
	SPRINKLER BUTTERFLY VALVE (ISOLATION VALVE)	--
	SPRINKLER PIPE FLOW SWITCH	01
	SPRINKLER PIPE REDUCER	--
	PRESSURE GAUGE	01
	SPRINKLER BALL VALVE - TEST DRAIN	01
	ACCESS DOOR	01

- ELBOW DOWN
- ELBOW UP
- TOP CONNECTION
- BOTTOM CONNECTION
- FIRE SPRINKLER SERVICE

ALL DIMENSIONS MUST BE CHECKED ON SITE  
INFORM THE ENGINEER OF ANY DISCREPANCIES PRIOR TO CONSTRUCTION

NOTES:  
IRRESPECTIVE OF THE DRAWING(S), IT IS THE CONTRACTOR'S OBLIGATION AND RESPONSIBILITY THAT SHALL BE EXECUTED AND COMPLETED IN ACCORDANCE TO THE SPECIFICATION, DRAWING(S) AS WELL AS REQUIREMENT. THE SAID DRAWING(S) SHALL NOT RELIEVE CONTRACTOR FROM ANY OBLIGATION UNDER THE CONTRACT AND IN PARTICULAR FROM ITS RESPONSIBILITY IN RELATION TO THE INSTALLATION MATERIALS AND WORKMANSHIP AND WHERE RELEVANT FROM A DUTY TO SEEK APPROVAL FROM THE COMPETENT AUTHORITY.



**02 KEY PLAN**  
NTS

T00 07.12.24 ISSUED FOR TENDER MB RR  
REV DATE DESCRIPTION DSN CHK



PROJECT  
F11-14 CHAI POINT, KFC & SUBWAY  
NOIDA INTERNATIONAL  
AIRPORT LIMITED,

DRAWING TITLE  
FIRE SPRINKLER PENDANT  
COVERAGE LAYOUT-CHAI POINT

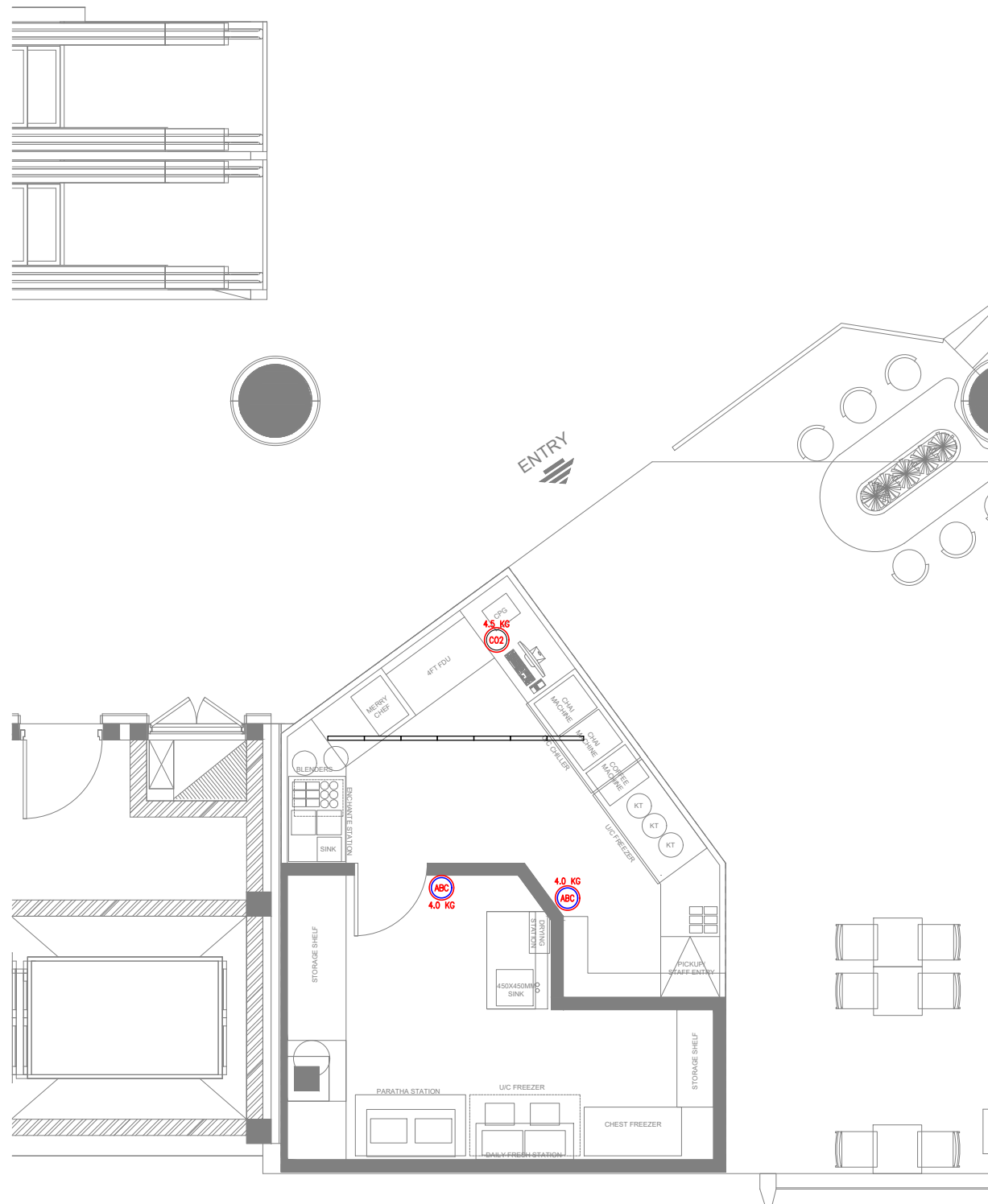
SCALE 1:100 DATE 07.12.24 DESIGNMB A3 SHEET

STATUS  
TENDER

ORG PROJECT NO DRAWING TYPE NUMBER REV  
TFS 0000 FIRE F202 T00

**01 FIRE SPRINKLER PENDANT COVERAGE LAYOUT-CHAI POINT**  
F202 1:75

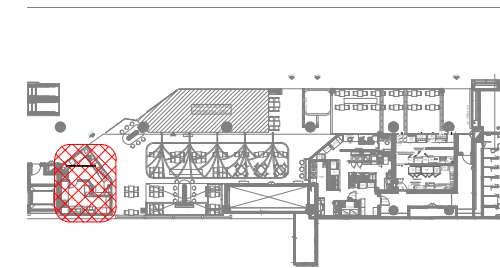




FIRE EXTINGUISHERS LEGEND		
SYMBOL	DESCRIPTION	QTY
	FIRE EXTINGUISHER_CLASS ABC (DRY POWDER) - 4.0 KG	02
	FIRE EXTINGUISHER_CLASS BC (CO2) - 4.5 KG	01

ALL DIMENSIONS MUST BE CHECKED ON SITE  
INFORM THE ENGINEER OF ANY DISCREPANCIES PRIOR TO CONSTRUCTION

NOTES:  
IRRESPECTIVE OF THE DRAWING(S), IT IS THE CONTRACTOR'S OBLIGATION AND RESPONSIBILITY THAT SHALL BE EXECUTED AND COMPLETED IN ACCORDANCE TO THE SPECIFICATION, DRAWING(S) AS WELL AS REQUIREMENT. THE SAID DRAWING(S) SHALL NOT RELIEVE CONTRACTOR FROM ANY OBLIGATION UNDER THE CONTRACT AND IN PARTICULAR FROM ITS RESPONSIBILITY IN RELATION TO THE INSTALLATION MATERIALS AND WORKMANSHIP AND WHERE RELEVANT FROM A DUTY TO SEEK APPROVAL FROM THE COMPETENT AUTHORITY.



**02 KEY PLAN**  
NTS

T00 07.12.24 ISSUED FOR TENDER MB RR  
REV DATE DESCRIPTION DSN CHK



PROJECT  
F11-14 CHAI POINT, KFC & SUBWAY  
NOIDA INTERNATIONAL  
AIRPORT LIMITED,

DRAWING TITLE  
FIRE EXTINGUISHER LAYOUT  
CHAI POINT

SCALE 1:75 DATE 07.12.24 DESIGNMB A3 SHEET

STATUS  
TENDER

ORG	PROJECT NO	DRAWING TYPE	NUMBER	REV
TFS	0000	FIRE	F301	T00

**01 FIRE EXTINGUISHER LAYOUT - CHAI POINT**  
F301 1:75