

ALL DIMENSIONS MUST BE CHECKED ON SITE
INFORM THE ENGINEER OF ANY DISCREPANCIES PRIOR TO CONSTRUCTION

NOTES:
IRRESPECTIVE OF THE DRAWING(S), IT IS THE CONTRACTOR'S OBLIGATION AND RESPONSIBILITY THAT SHALL BE EXECUTED AND COMPLETED IN ACCORDANCE TO THE SPECIFICATION, DRAWING(S) AS WELL AS REQUIREMENT. THE SAID DRAWING(S) SHALL NOT RELIEVE CONTRACTOR FROM ANY OBLIGATION UNDER THE CONTRACT AND IN PARTICULAR FROM ITS RESPONSIBILITY IN RELATION TO THE INSTALLATION MATERIALS AND WORKMANSHIP AND WHERE RELEVANT FROM A DUTY TO SEEK APPROVAL FROM THE COMPETENT AUTHORITY.

IN-DXN-SEATING AREA_M&E DRAWINGS

CONTENTS		
DWG NO.	DRAWING TITLE	PAGE NO.
M101	IN-DXN-SEATING AREA_HVAC LAYOUT	01
E101	IN-DXN-SEATING AREA_ELECTRICAL SLD - LPDB	02
E201	IN-DXN-SEATING AREA_LOAD CALCULATION SHEET - LPDB	03
E301	IN-DXN-SEATING AREA_POWER LAYOUT	04
E401	IN-DXN-SEATING AREA_LIGHTING LAYOUT	05
E501	IN-DXN-SEATING AREA_CCTV & DATA LAYOUT	06
E601	IN-DXN-SEATING AREA_CONTAINMENT LAYOUT	07
F301	IN-DXN-SEATING AREA_FIRE EXTINGUISHER LAYOUT	08

T00 07.12.24 ISSUED FOR TENDER	MB RR
REV DATE DESCRIPTION	DSN CHK



PROJECT
**FOOD HUB
NOIDA INTERNATIONAL
AIRPORT LIMITED,**

DRAWING TITLE
**TITLE SHEET
SEATING AREA**

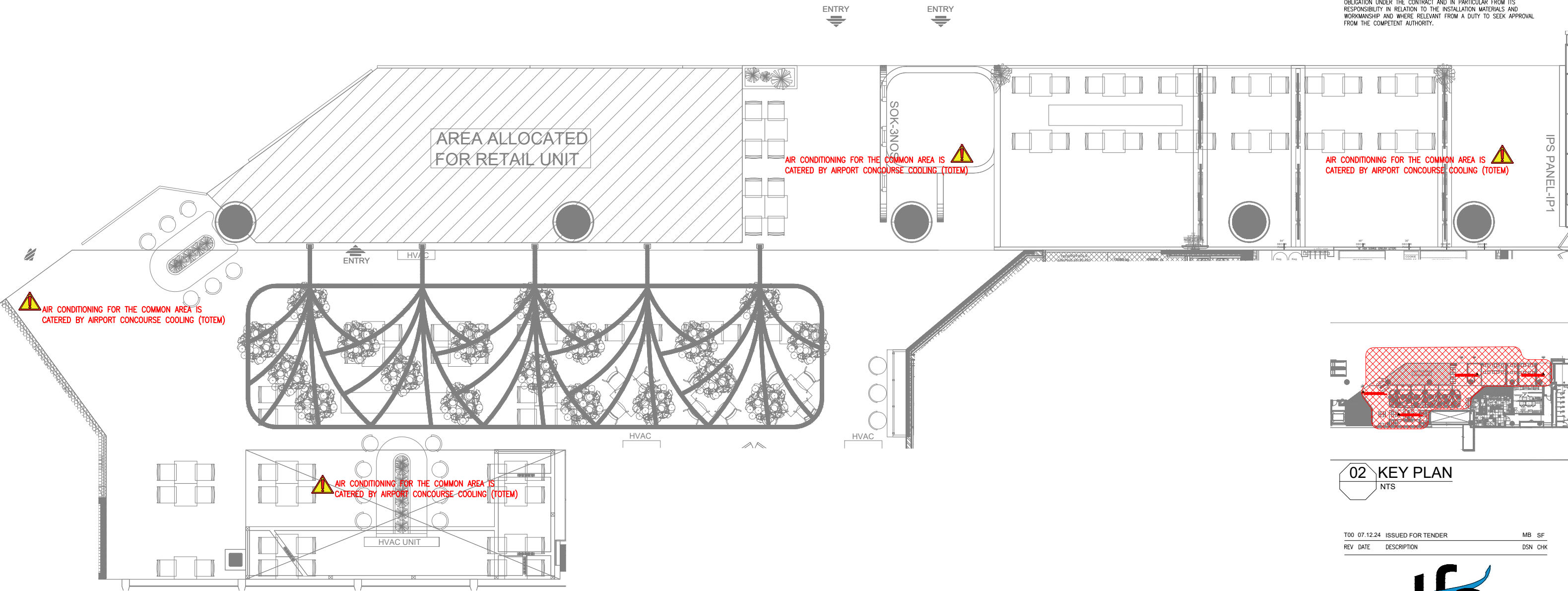
SCALE NTS DATE 07.12.24 DESIGNMB A3 SHEET

STATUS
TENDER

ORG	PROJECT NO	DRAWING TYPE	NUMBER	REV
TFS	0000	GEN	G101	T00

ALL DIMENSIONS MUST BE CHECKED ON SITE
INFORM THE ENGINEER OF ANY DISCREPANCIES PRIOR TO CONSTRUCTION

NOTES:
IRRESPECTIVE OF THE DRAWING(S), IT IS THE CONTRACTOR'S OBLIGATION AND RESPONSIBILITY THAT SHALL BE EXECUTED AND COMPLETED IN ACCORDANCE TO THE SPECIFICATION, DRAWING(S) AS WELL AS REQUIREMENT. THE SAID DRAWING(S) SHALL NOT RELIEVE CONTRACTOR FROM ITS OBLIGATION UNDER THE CONTRACT AND IN PARTICULAR FROM ITS RESPONSIBILITY IN RELATION TO THE INSTALLATION MATERIALS AND WORKMANSHIP AND WHERE RELEVANT FROM A DUTY TO SEEK APPROVAL FROM THE COMPETENT AUTHORITY.



01 HVAC LAYOUT-SEATING AREA
M101 1:100

02 KEY PLAN
NTS

T00	07.12.24	ISSUED FOR TENDER	MB	SF
REV	DATE	DESCRIPTION	DSN	CHK



PROJECT
FOOD HUB
NOIDA INTERNATIONAL
AIRPORT LIMITED,

DRAWING TITLE
HVAC LAYOUT
SEATING AREA

SCALE 1:100 DATE 07.12.24 DESIGNMB A3 SHEET

STATUS
TENDER

ORG	PROJECT NO	DRAWING TYPE	NUMBER	REV
TFS	0000	HVAC	M101	T00

PROJECT / BUILDING NAME :		NOIDA INTERNATIONAL AIRPORT															
FED FROM :		AIRPORT DISTRIBUTION FEEDER (F12 - F&B w/ KITCHEN - 63A 4P ISOLATOR EXISTING AT SITE-AVAILABLE POWER : CL:15.50KW, DL:10.10KW)															
DISTRIBUTION BOARD / REF :		LPDB-SA										DB AREA REFERENCE :					
MAIN INCOMING CABLE :		4C x 25 SQ.MM XLPE AL CABLE + 2 X 8 SWG										DOCUMENT NO. :					
MAIN INCOMER RATING (A)	CIRCUIT ID	BREAKER TYPE	BREAKER RATING (A)	WIRE SIZE (PH & N) (mm ²)	WIRE SIZE (EARTH) (mm ²)	EQUIP. TAG	CIRCUIT NAME / POINT REFERENCE	NUMBER OF POINTS	CONN. LOAD / POINT (W)	DIVERSITY TYPE	DIVERSITY FACTOR	R	Y	B	TOTAL CONN. LOAD (kW)	TOTAL DIVERSITY LOAD (kW)	REMARKS
63A 4P 30mA RCCB	R1	SP MCB	16 A	2.5	1.5		PENDANT LIGHT - 01 + LED STRIP LIGHT	10	448	LTG	1	0.45			0.45	0.45	
	Y1	SP MCB	16 A	2.5	1.5		PENDENT LIGHTS-01(SEATING AREA)	18	12	LTG	1				0.00	0.00	
	B1	SP MCB	16 A	2.5	1.5		PENDANT LIGHT - 02	4	60	LTG	1			0.06	0.06	0.06	
	R2	SP MCB	16 A	2.5	1.5		MAGNETIC TRACK LIGHT-01 + MAGNETIC TRACK LIGHT-02 + LIT SIGNAGE	19	316	LTG	1	0.32			0.32	0.32	
	Y2	SP MCB	16 A	2.5	1.5		PENDENT LIGHTS-02 (SEATING AREA)	4	18	LTG	1		0.02		0.02	0.02	
	B2	SP MCB	16 A	2.5	1.5		USB SOCKET	4	200	PWR	0.5			0.20	0.20	0.10	
	R3	SP MCB	16 A	2.5	1.5		USB SOCKET	4	200	PWR	0.5	0.20			0.20	0.10	
	Y3	SP MCB	16 A	2.5	1.5		IPS PANEL	1	1700	PWR	1		1.70		1.70	1.70	
	B3	SP MCB	32 A	2 x 4	2 x 2.5		GENERAL SOCKETS(SEATING AREA)	8	100	PWR	0.5			0.10	0.10	0.05	RING CKT
	R4	SP MCB	32 A	2 x 4	2 x 2.5		GENERAL SOCKETS(SEATING AREA)	8	100	PWR	0.5	0.10			0.10	0.05	RING CKT
	Y4	SP MCB	16 A	2.5	1.5		SPARE						0.00		0.00	0.00	
	B4	SP MCB	16 A	2.5	1.5		IDF RACK	2	100	PWR	1			0.10	0.10	0.10	
	R5	SP MCB	16 A	2.5	1.5		IDF RACK	1	350	PWR	1	0.35			0.35	0.35	
	Y5	SP MCB	16 A	2.5	1.5		SPARE							0.00	0.00		
	B5	SP MCB	16 A	2.5	1.5		LED STRIP(72 MTR-SEATING AREA)	1	432	LTG	1			0.43	0.43	0.43	
	R6	SP MCB	16 A	2.5	1.5		LIT SIGNAGE	2	100	LTG	1	0.10			0.00	0.00	
Y6	SP MCB	16 A	2.5	1.5		SPARE							0.00	0.00			
B6	SP MCB	16 A	2.5	1.5		PENDANT LIGHT - 01 + LED STRIP LIGHT	12	488	LTG	1			0.49	0.49	0.49		
											LPDB-SA	1.51	1.72	1.38	4.51	4.21	
												TCL - R	TCL - Y	TCL - B	TCL	TDL	

ABBREVIATIONS : PWR - POWER, LTG - LIGHTING, UPS - UNINTERRUPTIBLE POWER SUPPLY, A - AMPS, W - WATTS, kW - KILOWATT, 1R - ONE RUN, 4C - FOUR CORE, 2C - TWO CORE, CU. - COPPER, ECC - EARTH CONTINUITY CONDUCTOR, CONN. - CONNECTED

TOTAL CONNECTED LOAD	4.51	LPDB-SA	TCL (kW)
TOTAL CONNECTED LOAD	5.01	LPDB-SA	TCL (kVA)
TOTAL DEMAND LOAD	4.21	LPDB-SA	TDL (kW)
TOTAL DEMAND LOAD	4.68	LPDB-SA	TDL (kVA)
AVERAGE DIVERSITY FACTOR	93%	LPDB-SA	%



PROJECT
FOOD HUB
NOIDA INTERNATIONAL
AIRPORT LIMITED,

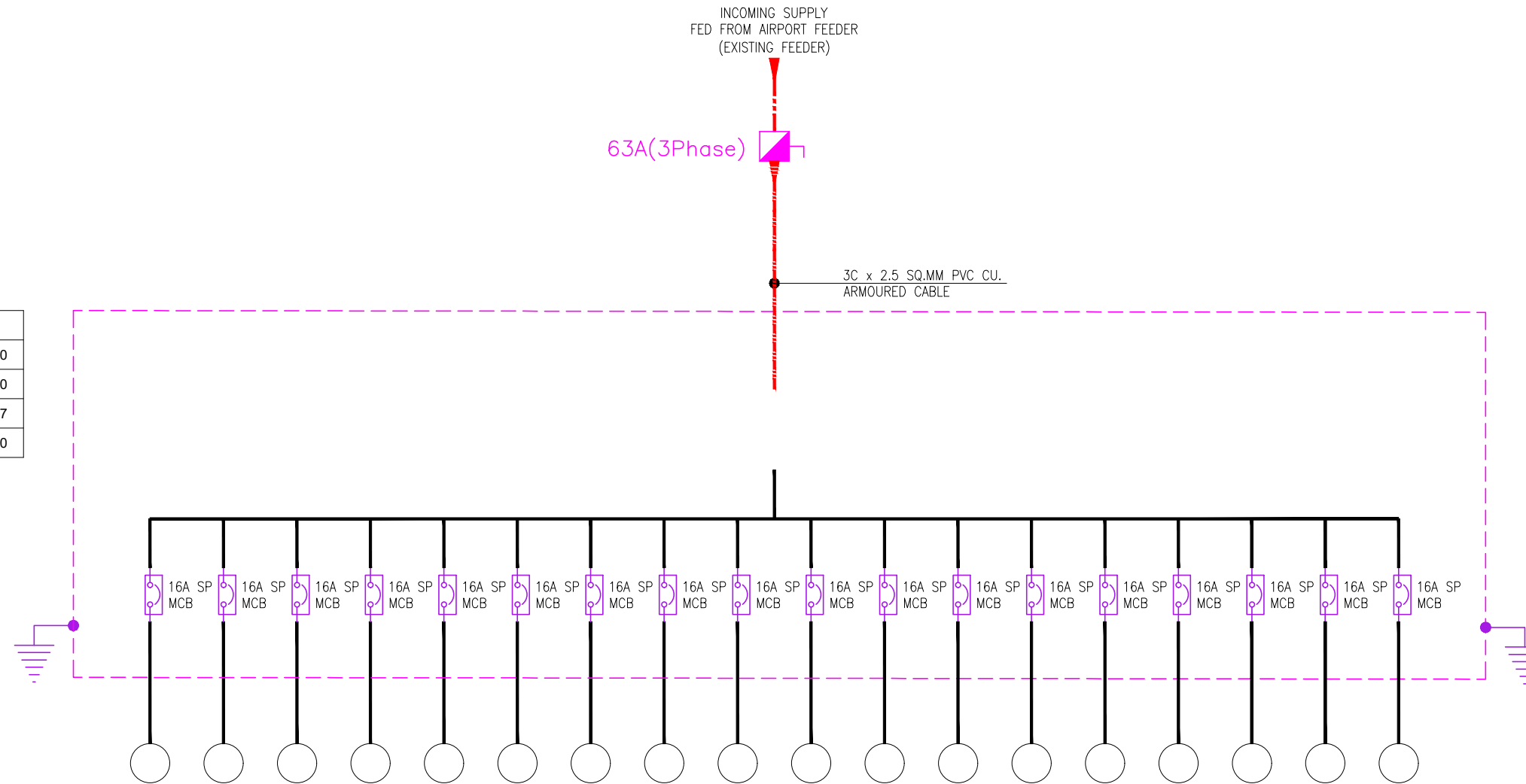
DRAWING TITLE
LOAD CALCULATION SHEET
LPDB-SA

STATUS
TENDER

ALL DIMENSIONS MUST BE CHECKED ON SITE
INFORM THE ENGINEER OF ANY DISCREPANCIES PRIOR TO CONSTRUCTION

NOTES:
IRRESPECTIVE OF THE DRAWING(S), IT IS THE CONTRACTOR'S OBLIGATION AND RESPONSIBILITY THAT SHALL BE EXECUTED AND COMPLETED IN ACCORDANCE TO THE SPECIFICATION, DRAWING(S) AS WELL AS REQUIREMENT. THE SAID DRAWING(S) SHALL NOT RELIEVE CONTRACTOR FROM ITS OBLIGATION UNDER THE CONTRACT AND IN PARTICULAR FROM ITS RESPONSIBILITY IN RELATION TO THE INSTALLATION MATERIALS AND WORKMANSHIP AND WHERE RELEVANT FROM A DUTY TO SEEK APPROVAL FROM THE COMPETENT AUTHORITY.

LPDB-SA	
CONN. LOAD (KW)	0.00
CONN. LOAD (KVA)	0.00
DEMAND LOAD (KW)	3.87
DEMAND LOAD (KVA)	4.30



ELECTRICAL LOW VOLTAGE SYSTEM LEGEND		
SYMBOL	DESCRIPTION	QTY
	MCCB (MOULDED CASE CIRCUIT BREAKER)	--
	MCB (MINIATURE CIRCUIT BREAKER)	--
	RCCB (RESIDUAL CURRENT CIRCUIT BREAKER)	--
	THREE PHASE ISOLATOR	--
	SINGLE PHASE ISOLATOR	--
	DIRECT ONLINE STARTER (D.O.L.)	--
	KWH METER - CT TYPE	--
	MFM METER	--
	EARTH CONNECTION	--
	PUSH ON & OFF SWITCH	--

NOTES

- CONTRACTOR TO CHECK & CONFIRM ACTUAL SITE CONDITIONS PRIOR TO START DEVELOPING THEIR SHOP DRAWINGS & WORK AT SITE.
- LAMINATED SINGLE LINE DIAGRAM & LOAD CALCULATION SHEET TO BE PROVIDED INSIDE / NEAR TO EACH ELECTRICAL PANEL / DB'S.
- ALL CABLES & WIRES MUST BE FRLSH/LSZH.
- GI CONDUITS WITH SUITABLE DIAMETER TO BE USED.

FEEDER/EQUIPMENT NAME	LOAD (KW)	MCB RATING	WIRE (SQ.MM)	ECC (SQ.MM)
PENDANT LIGHT - 01 + LED STRIP LIGHT	0.45	16 A	2.5	1.5
PENDANT LIGHT - 01 + LED STRIP LIGHT	0.49	16 A	2.5	1.5
PENDANT LIGHT - 02	0.06	16 A	2.5	1.5
MAGNETIC TRACK LIGHT-01 + MAGNETIC TRACK LIGHT-02 + LIT SIGNAGE	0.32	16 A	2.5	1.5
LIT SIGNAGE	0.20	16 A	2.5	1.5
USB SOCKET	0.10	16 A	2.5	1.5
USB SOCKET	0.10	16 A	2.5	1.5
IPS PANEL	1.70	16 A	2.5	1.5
GENERAL SOCKETS(SEATING AREA)	0.10	32 A	2 x 4	2 x 2.5
GENERAL SOCKETS(SEATING AREA)	0.10	32 A	2 x 4	2 x 2.5
LED STRIP(72 MTR-SEATING AREA)	0.43	16 A	2.5	1.5
PENDENT LIGHTS-01(SEATING AREA)	0.01	16 A	2.5	1.5
PENDENT LIGHTS-02 (SEATING AREA)	0.018	16 A	2.5	1.5
SPARE	--	16 A	2.5	1.5
SPARE	--	16 A	2.5	1.5
SPARE	--	16 A	2.5	1.5
SPARE	--	16 A	2.5	1.5
SPARE	--	16 A	2.5	1.5

T00 07.12.24 ISSUED FOR TENDER TT AS
REV DATE DESCRIPTION DSN CHK



PROJECT
FOOD HUB
NOIDA INTERNATIONAL
AIRPORT LIMITED,

DRAWING TITLE
ELECTRICAL SLD
LPDB-SA

SCALE NTS DATE 07.12.24 DESIGN TT A3 SHEET

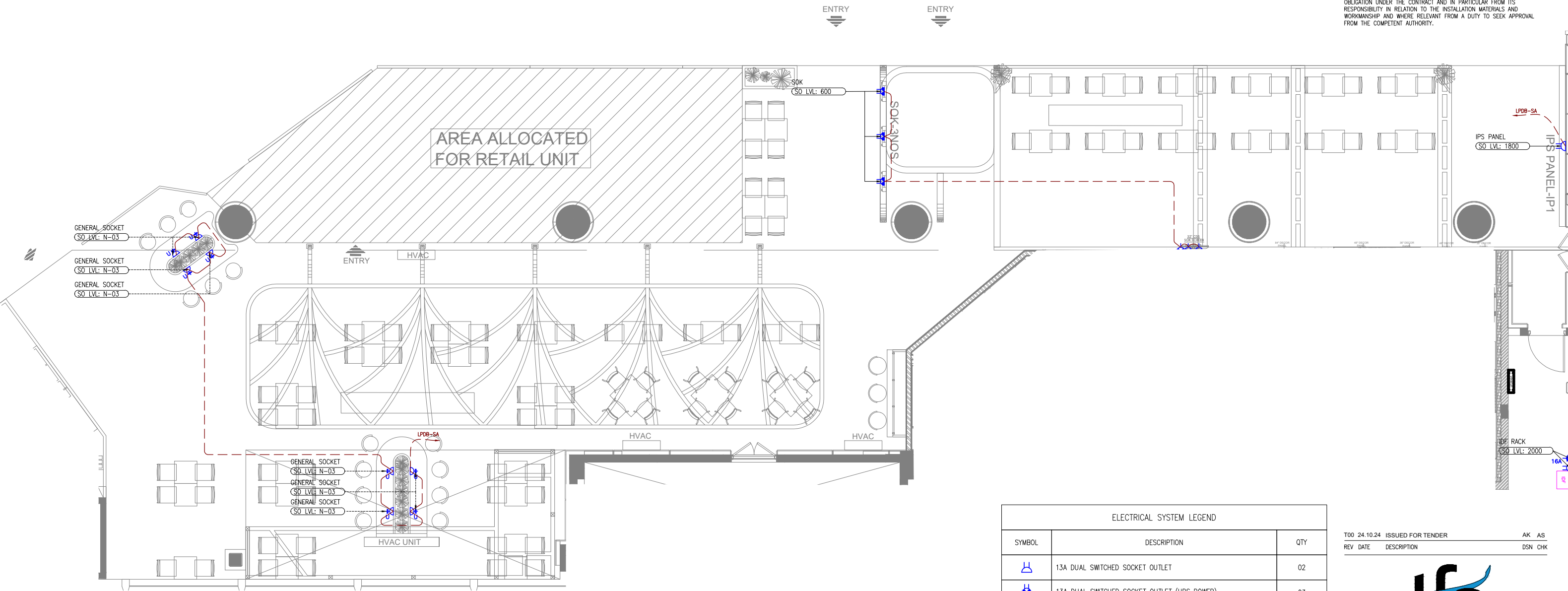
STATUS

TENDER

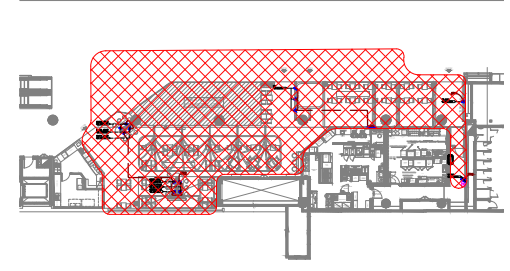
ORG PROJECT NO DRAWING TYPE NUMBER REV
TFS 0000 ELEC E201 T00

ALL DIMENSIONS MUST BE CHECKED ON SITE
INFORM THE ENGINEER OF ANY DISCREPANCIES PRIOR TO CONSTRUCTION

NOTES:
IRRESPECTIVE OF THE DRAWING(S), IT IS THE CONTRACTOR'S OBLIGATION AND RESPONSIBILITY THAT SHALL BE EXECUTED AND COMPLETED IN ACCORDANCE TO THE SPECIFICATION, DRAWING(S) AS WELL AS REQUIREMENT. THE SAID DRAWING(S) SHALL NOT RELIEVE CONTRACTOR FROM ITS OBLIGATION UNDER THE CONTRACT AND IN PARTICULAR FROM ITS RESPONSIBILITY IN RELATION TO THE INSTALLATION MATERIALS AND WORKMANSHIP AND WHERE RELEVANT FROM A DUTY TO SEEK APPROVAL FROM THE COMPETENT AUTHORITY.



01 POWER LAYOUT-SEATING AREA
E301 1:100



02 KEY PLAN
NTS

ELECTRICAL SYSTEM LEGEND		
SYMBOL	DESCRIPTION	QTY
	13A DUAL SWITCHED SOCKET OUTLET	02
	13A DUAL SWITCHED SOCKET OUTLET (UPS POWER)	03
	16A SINGLE SWITCHED SOCKET OUTLET	01
	13A SINGLE SWITCHED UNIVERSAL SOCKET OUTLET + 2 DUAL USB PORT	08
	LPDB	01
	ELECTRICAL POWER CIRCUIT	--

- NOTES**
- ALL DIMENSIONS & LEVEL ARE IN "MM" OR OTHERWISE MENTIONED.
 - SOCKETS PROVIDED NEAR WET AREAS SHALL BE AT LEAST 1.2 MTR AWAY FROM WATER SOURCE AND IP66 RATED.
 - A DISTANCE OF MINIMUM 300MM TO BE MAINTAINED BETWEEN POWER AND COMMUNICATION CABLE.
 - ALL CIRCUITS IN DB ARE TO BE TAGGED. MCB/MCCB IS TO BE LABELED AND THE SCHEMATIC IS TO BE UPDATED ACCORDING TO WHAT IS DISPLAYED IN DB.
 - SOCKET ELEVATIONS SHOWN IN THE DRAWING IS DESIGN INDICATIVE. THE CONTRACTOR NEEDS TO FIELD VERIFY AT THE SITE AND INTEGRATE IT TO MATCH WITH THE ID DESIGN FOR THE FINAL LOCATION & ELEVATIONS.
 - SHUTTER TYPE SWITCH SOCKET OUTLET ON SUITABLE MS BOX SHALL BE USED WITH PROPER EARTHING.
 - ALL ELECTRICAL EQUIPMENT SHALL BE PROPER EARTHED AND CONNECTED TO MAIN EARTHING WITH SUITABLY SIZED EARTHING CONDUCTOR.
 - ALL SWITCH / SOCKET / DATA OUTLET PLATE COLOUR / FINISH TO BE MATCH WITH ARCHITECTURAL LAYOUT & ARCHITECT APPROVAL TO BE TAKEN PRIOR TO PRODUCT PROCUREMENT.
 - N-01: SOCKET OUTLETS TO BE FIXED AS PER SITE.
 - N-02: SOCKET OUTLETS TO BE FIXED WITH TV INSTALLATION FRAME / ROD.
 - N-03: SOCKET OUTLETS TO BE FIXED WITH FURNITURE LAYOUT.

T00 24.10.24 ISSUED FOR TENDER AK AS
REV DATE DESCRIPTION DSN CHK



PROJECT
F03-07 DOMINOES, B.GALIYAN, IDLY NOIDA INTERNATIONAL AIRPORT LIMITED,

DRAWING TITLE
PROPOSED PLAN

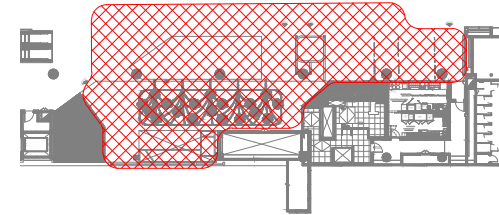
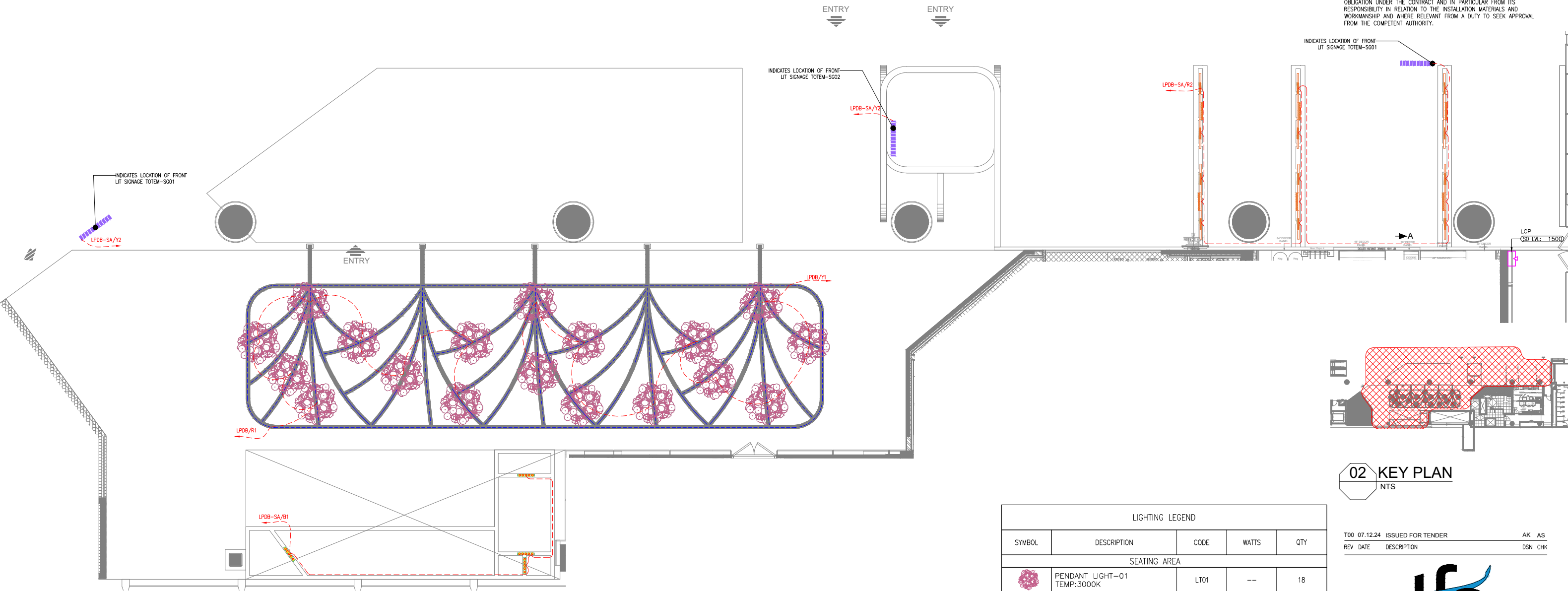
SCALE 1:75 DATE 24.10.24 DESIGNAK A3 SHEET

STATUS
TENDER

ORG PROJECT NO DRAWING TYPE NUMBER REV
TFS 0000 ELEC E301 T00

ALL DIMENSIONS MUST BE CHECKED ON SITE
INFORM THE ENGINEER OF ANY DISCREPANCIES PRIOR TO CONSTRUCTION

NOTES:
IRRESPECTIVE OF THE DRAWING(S), IT IS THE CONTRACTOR'S OBLIGATION AND RESPONSIBILITY THAT SHALL BE EXECUTED AND COMPLETED IN ACCORDANCE TO THE SPECIFICATION, DRAWING(S) AS WELL AS REQUIREMENT. THE SAID DRAWING(S) SHALL NOT RELIEVE CONTRACTOR FROM ITS OBLIGATION UNDER THE CONTRACT AND IN PARTICULAR FROM ITS RESPONSIBILITY IN RELATION TO THE INSTALLATION MATERIALS AND WORKMANSHIP AND WHERE RELEVANT FROM A DUTY TO SEEK APPROVAL FROM THE COMPETENT AUTHORITY.



02 KEY PLAN
NTS

01 LIGHTING LAYOUT-SEATING AREA
E401 1:100

LIGHTING LEGEND				
SYMBOL	DESCRIPTION	CODE	WATTS	QTY
SEATING AREA				
	PENDANT LIGHT-01 TEMP:3000K	LT01	--	18
	PENDANT LIGHT-02 TEMP:3000K	LT02	--	04
	MAGNETIC TRACK LIGHT-01	LT03	--	06
	MAGNETIC TRACK LIGHT-02	LT03	--	12
	LED STRIP LIGHT WITH RECESSED DIFFUSER TEMP:3500K	LT04	8W/M	72 MTR
	INDICATIVE SIGNAGE	--	100	--
	LIGHTING CONTROL SWITCH POINT			--
	LIGHTING NORMAL CIRCUIT			--
	LIGHTING UPS CIRCUIT			--

T00 07.12.24 ISSUED FOR TENDER AK AS
REV DATE DESCRIPTION DSN CHK



PROJECT
**FOOD HUB
NOIDA INTERNATIONAL
AIRPORT LIMITED,**

DRAWING TITLE
PROPOSED PLAN

SCALE 1:75 DATE 07.12.24 DESIGNAK A3 SHEET

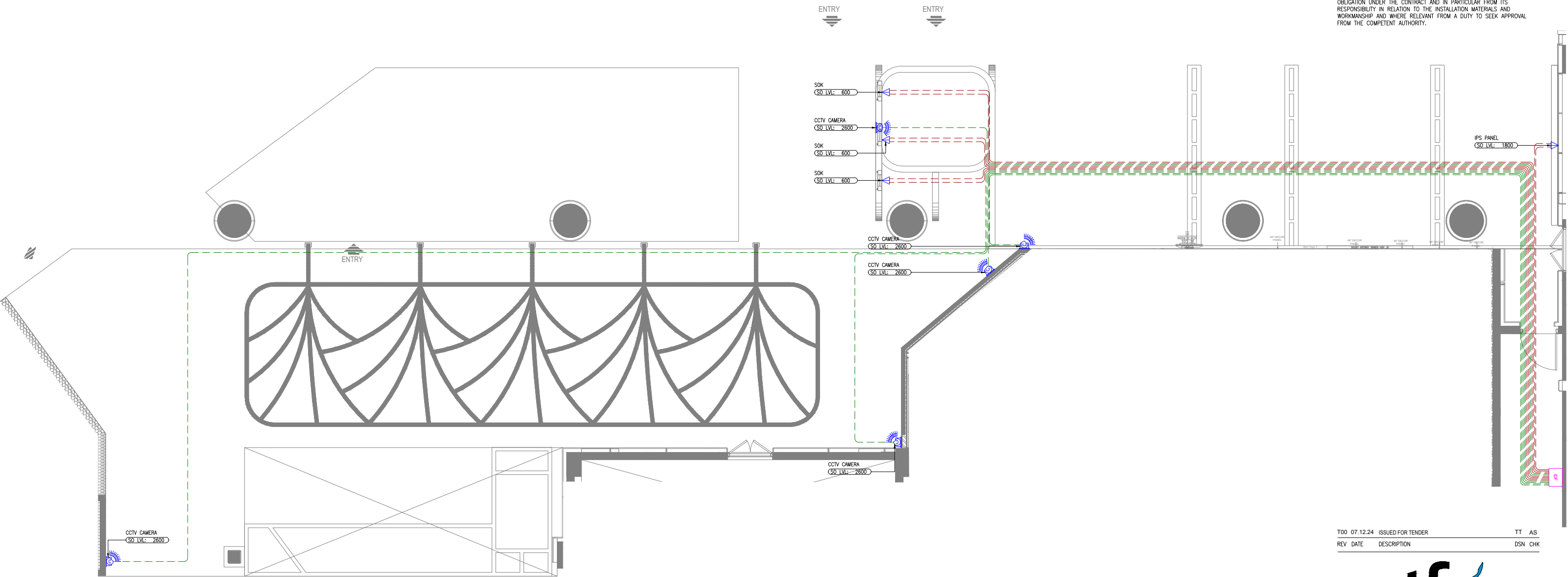
STATUS

TENDER

ORG PROJECT NO DRAWING TYPE NUMBER REV
TFS 0000 ELEC E401 T00

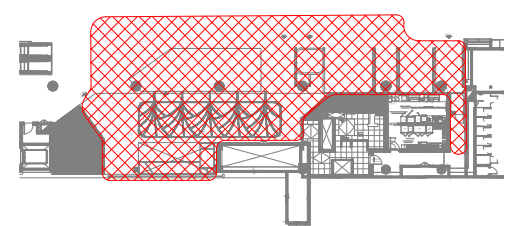
ALL DIMENSIONS MUST BE CHECKED ON SITE
INFORM THE ENGINEER OF ANY DISCREPANCIES PRIOR TO CONSTRUCTION

NOTES:
IRRESPECTIVE OF THE DRAWING(S), IT IS THE CONTRACTOR'S OBLIGATION AND RESPONSIBILITY THAT SHALL BE EXECUTED AND COMPLETED IN ACCORDANCE TO THE SPECIFICATION, DRAWING(S) AS WELL AS REQUIREMENT. THE SAID DRAWING(S) SHALL NOT RELIEVE CONTRACTOR FROM ITS OBLIGATION UNDER THE CONTRACT AND IN PARTICULAR FROM ITS RESPONSIBILITY IN RELATION TO THE INSTALLATION MATERIALS AND WORKMANSHIP AND WHERE RELEVANT FROM A DUTY TO SEEK APPROVAL FROM THE COMPETENT AUTHORITY.



01 CCTV & DATA LAYOUT-SEATING AREA
E501 1:100

T00 07.12.24 ISSUED FOR TENDER TT AS
REV DATE DESCRIPTION DSN CHK



02 KEY PLAN
NTS

CCTV & DATA NETWORKING LEGENDS		
SYMBOL	DESCRIPTION	QTY
	DOMI CCTV CAMERA - IP67 CEILING MOUNT	13
	DOMI CCTV CAMERA - IP67 WALL MOUNT (CONTRACTORS SCOPE)	08
	SINGLE RJ45 DATA OUTLET	19
	DUAL RJ45 DATA OUTLET	21
	SINGLE TELEPHONE OUTLET (RJ11)	03
	NVR FOR CCTV	01
	INTERMEDIATE DISTRIBUTION FRAME (DATA NETWORK)	04
	CCTV CABLE	--
	DATA SYSTEM CABLE	--

NOTES

- ALL DIMENSIONS & LEVEL ARE IN "MM" OR OTHERWISE MENTIONED.
- N-01: SOCKET OUTLETS TO BE FIXED AS PER SITE.
- N-02: SOCKET OUTLETS TO BE FIXED WITH TV INSTALLATION FRAME / ROD.



PROJECT
**FOOD HUB
NOIDA INTERNATIONAL
AIRPORT LIMITED,**

DRAWING TITLE
**CCTV & DATA LAYOUT
SEATING AREA**

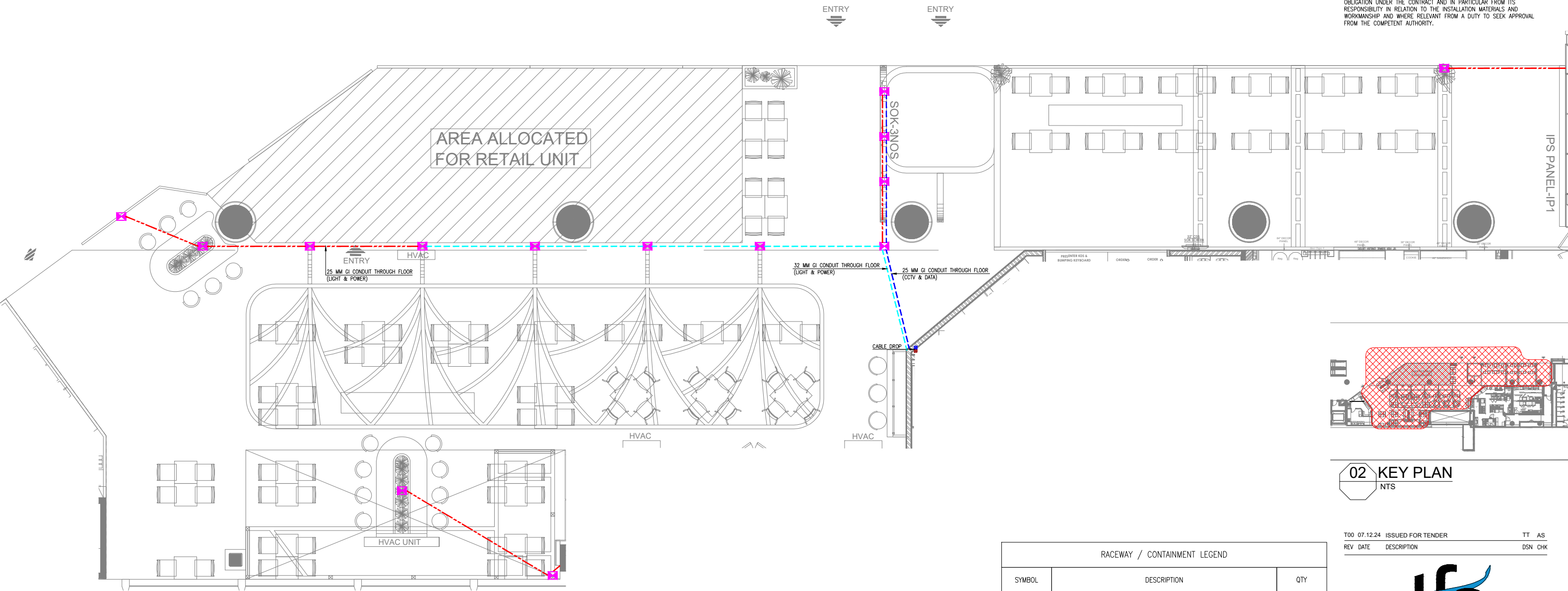
SCALE 1:75 DATE 07.12.24 DESIGN TT A3 SHEET

STATUS
TENDER

ORG PROJECT NO DRAWING TYPE NUMBER REV
TFS 0000 ELEC E501 T00

ALL DIMENSIONS MUST BE CHECKED ON SITE
INFORM THE ENGINEER OF ANY DISCREPANCIES PRIOR TO CONSTRUCTION

NOTES:
IRRESPECTIVE OF THE DRAWING(S), IT IS THE CONTRACTOR'S OBLIGATION AND RESPONSIBILITY THAT SHALL BE EXECUTED AND COMPLETED IN ACCORDANCE TO THE SPECIFICATION, DRAWING(S) AS WELL AS REQUIREMENT. THE SAID DRAWING(S) SHALL NOT RELIEVE CONTRACTOR FROM ITS OBLIGATION UNDER THE CONTRACT AND IN PARTICULAR FROM ITS RESPONSIBILITY IN RELATION TO THE INSTALLATION MATERIALS AND WORKMANSHIP AND WHERE RELEVANT FROM A DUTY TO SEEK APPROVAL FROM THE COMPETENT AUTHORITY.



01 CONTAINMENT LAYOUT-SEATING AREA
E601 1:100

02 KEY PLAN
NTS

RACEWAY / CONTAINMENT LEGEND		
SYMBOL	DESCRIPTION	QTY
	CABLE TRUNKING (LIGHTING & LIGHTING)	--
	CABLE TRUNKING (CCTV & DATA)	--
	FLOOR BOX WITH REMOVABLE COVER	14
	25 MM GI CONDUIT THROUGH FLOOR(CCTV&DATA)	--
	25MM GI CONDUIT THROUGH FLOOR SCREED(LIGHT & POWER)	--
	32 MM GI CONDUIT THROUGH FLOOR(LIGHT & POWER)	--
	UDB - UPS DISTRIBUTION BOARD	01
	SUB MAIN DISTRIBUTION BOARD (SMDB) & LPDB	03
	INTERMEDIATE DISTRIBUTION FRAME (DATA NETWORK)	04

- NOTES**
- ALL DIMENSIONS & LEVEL ARE IN "MM" OR OTHERWISE MENTIONED.
 - HEAVY DUTY PVC CONDUITS OF SUITABLE DIAMETER TO BE USED FOR ALL LIGHTING & POWER CABLING BETWEEN LIGHT / POWER POINT TO DB.
 - CONTRACTOR TO FOLLOW AIRPORT MEP GUIDELINES FOR MATERIAL MAKE & SPECIFICATION.
 - CABLE TRAY & TRUNKING ROUTES ARE INDICATIVE ONLY, TO BE COORDINATED WITH OTHER SERVICES.
 - THE CONTRACTOR IS EXPECTED TO DEVELOP THE ACTUAL ROUTING DETAILS OF THESE AT SITE BASED ON SITE CONDITION. IT IS IMPORTANT TO ENSURE THAT THESE SERVICES ARE NOT VISIBLE TO CUSTOMERS, CAN BE ACCESSED IN FUTURE FOR MAINTENANCE AND ARE NOT DETRIMENTAL TO THE UNIT.

T00 07.12.24 ISSUED FOR TENDER TT AS
REV DATE DESCRIPTION DSN CHK



PROJECT
**FOOD HUB
NOIDA INTERNATIONAL
AIRPORT LIMITED,**

DRAWING TITLE
**CONTAINMENT LAYOUT
SEATING AREA**

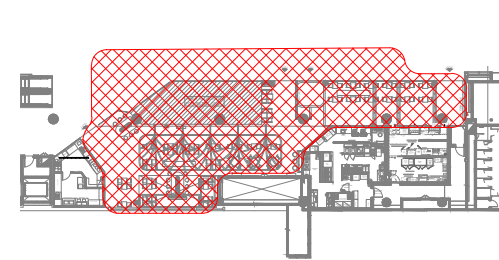
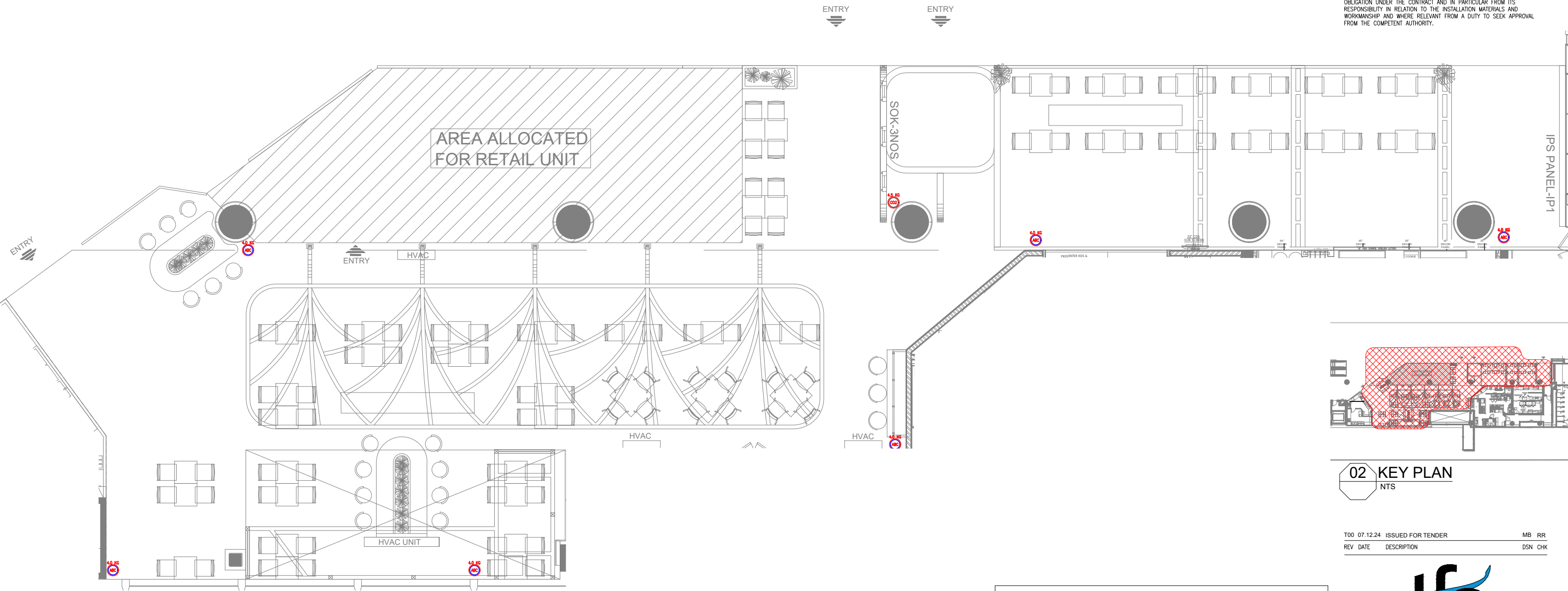
SCALE 1:100 DATE 07.12.24 DESIGN TT A3 SHEET

STATUS
TENDER

ORG PROJECT NO DRAWING TYPE NUMBER REV
TFS 0000 ELEC E601 T00

ALL DIMENSIONS MUST BE CHECKED ON SITE
INFORM THE ENGINEER OF ANY DISCREPANCIES PRIOR TO CONSTRUCTION

NOTES:
IRRESPECTIVE OF THE DRAWING(S), IT IS THE CONTRACTOR'S OBLIGATION AND RESPONSIBILITY THAT SHALL BE EXECUTED AND COMPLETED IN ACCORDANCE TO THE SPECIFICATION, DRAWING(S) AS WELL AS REQUIREMENT. THE SAID DRAWING(S) SHALL NOT RELIEVE CONTRACTOR FROM ITS OBLIGATION UNDER THE CONTRACT AND IN PARTICULAR FROM ITS RESPONSIBILITY IN RELATION TO THE INSTALLATION MATERIALS AND WORKMANSHIP AND WHERE RELEVANT FROM A DUTY TO SEEK APPROVAL FROM THE COMPETENT AUTHORITY.



01 FIRE EXTINGUISHER LAYOUT-SEATING AREA
F301 1:100

02 KEY PLAN
NTS

FIRE EXTINGUISHERS LEGEND		
SYMBOL	DESCRIPTION	QTY
	FIRE EXTINGUISHER_CLASS ABC (DRY POWDER) - 4.0 KG	06
	FIRE EXTINGUISHER_CLASS BC (CO2) - 4.5 KG	01

T00 07.12.24 ISSUED FOR TENDER MB RR
REV DATE DESCRIPTION DSN CHK



PROJECT
**FOOD HUB
NOIDA INTERNATIONAL
AIRPORT LIMITED,**

DRAWING TITLE
**FIRE EXTINGUISHER LAYOUT
SEATING AREA**

SCALE 1:100 DATE 07.12.24 DESIGNMB A3 SHEET

STATUS
TENDER

ORG PROJECT NO DRAWING TYPE NUMBER REV
TFS 0000 FIRE F301 T00