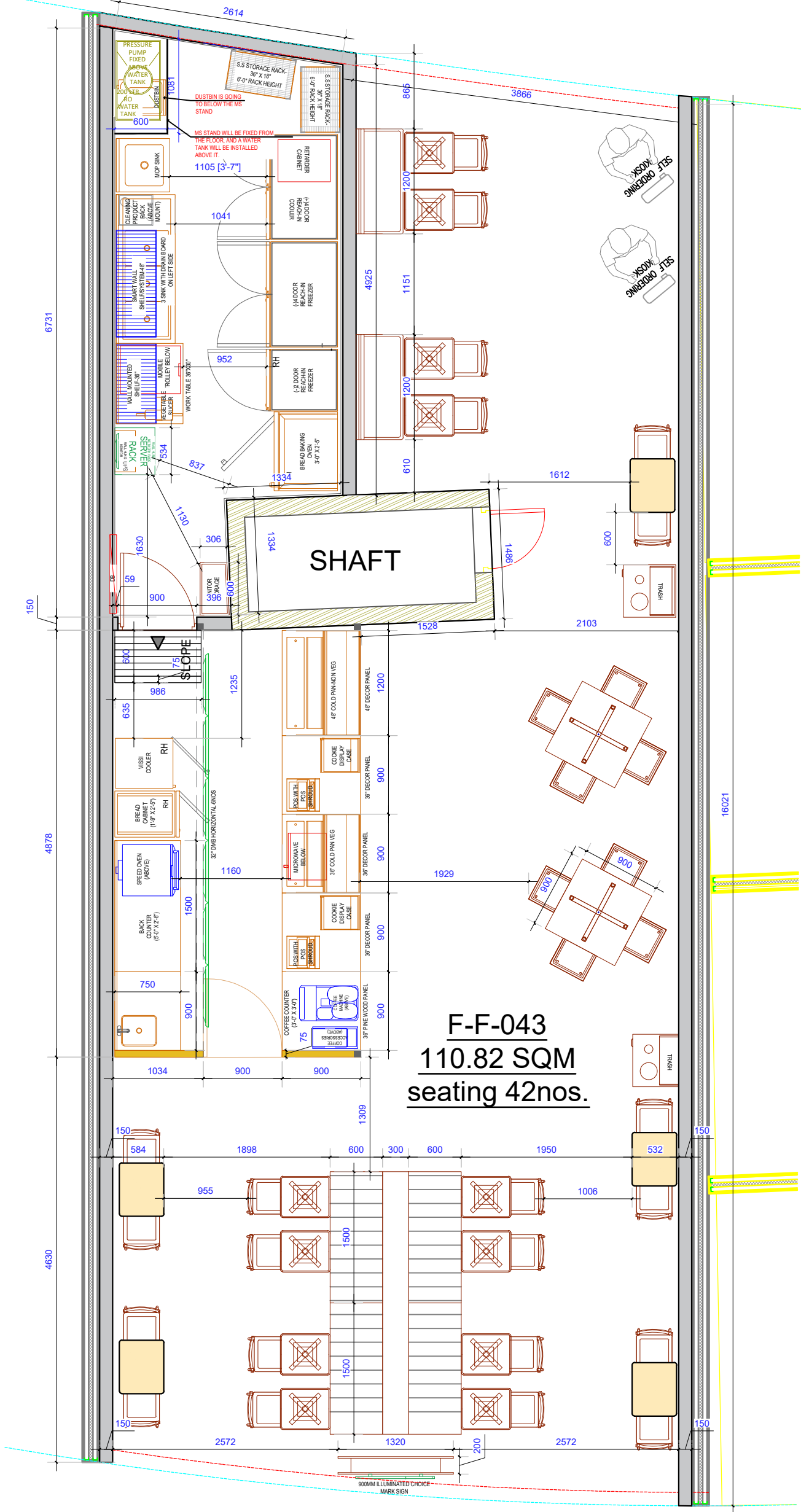


FF-43_
_HYDERABAD AIRPORT
_Domestic_Services
Layout_Rev-3



F-F-043
110.82 SQM
seating 42nos.

- * STORE FORMAT=AIRPORT KIOSK
- * CARPET AREA=110.82 SQM.
- * CEILING HT. (BOTTOM OF CEILING)=0'-0"
- * TOTAL SEATING=48 NOS.
- * DMB= 6 NOS. 32" SCREEN (HORIZONTAL) @6'-6" BOTTOM FROM CUSTOMER AREA F.FL

SITE:
FF-43_HYDERABAD AIRPORT_Domestic

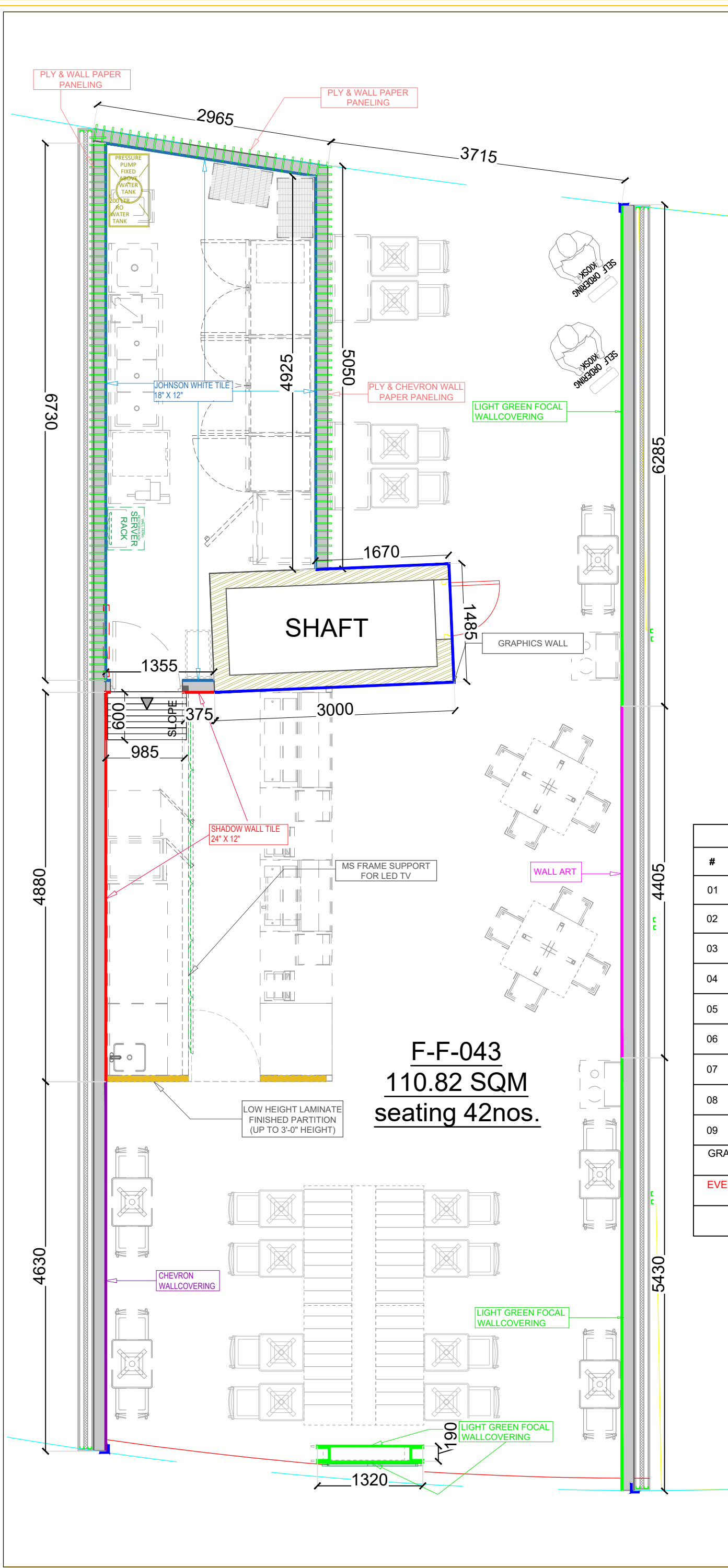
DRAWING TITLE :
EQUIPMENT & FURNITURE LAYOUT, OPTION-9

MADE BY AASTHA

DATE 22nd FEB 2024 **RD** 01

SUBWAY
EVERSUB India Pvt Ltd

OFFICE :-
 SUBWAY SYSTEMS INDIA PRIVATE LIMITED,
 Awfis Space Solutions, 3rd Floor, Tower-9,
 Unitech Cyber Park, Gurgaon, Haryana,
 India-122002.



WALL FINISHES			
#		MATERIAL NAME	AREA PER SFT
01		LIGHT GREEN FOCAL WALLCOVERING	240.00
02		PLY & WALL PAPER CLADDING	202
03		CHEVRON WALLCOVERING	246.00
04		SHADOW WALL TILE 24" X 12"	108.00
05		JOHNSON-WHITE TILE 18"X 12"	294.00
06		BLACK DATUM MOLDING 101.6 X 2438 X 3 MM	NA
07		CORNER GUARD (For wallpaper corners) EA./12FT	2
08		WALL ART	
09		GRAY COLOUR TEXTURE PAINT	
GRAY PAINT FOR WALL & CEILING (WROUGHT IRON-CODE 8439- ASIAN PAINT) NOT APPLICABLE			
EVERY FINISH WILL BE COMPLETED @ 6' FEET HEIGHT FROM FINISHED FLOOR LEVEL.			
THIS AREA AS PER DRAWING WASTAGE NOT INCLUDED			



SITE:
FF-43_HYDERABAD AIRPORT_Domestic

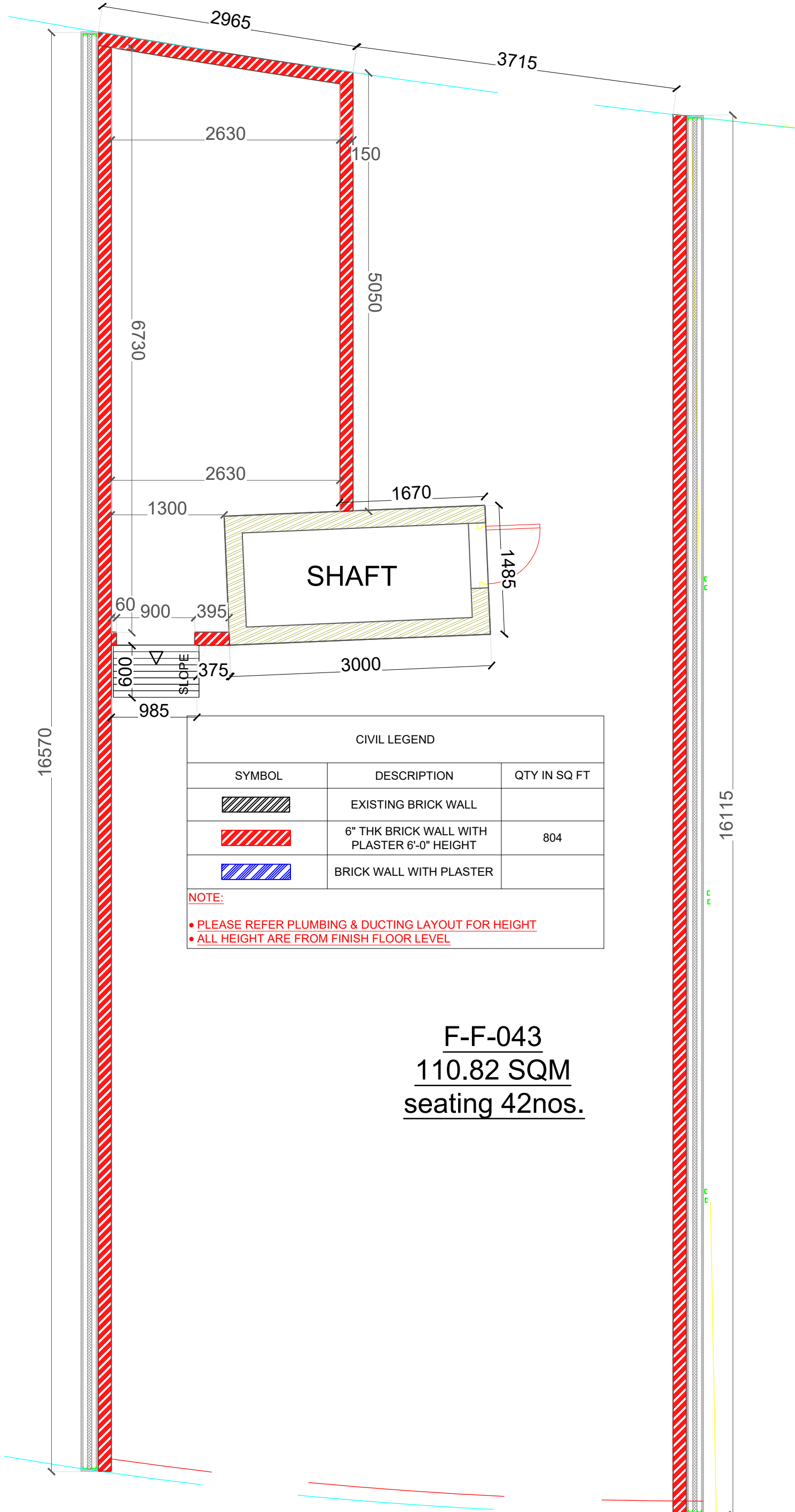
DRAWING TITLE:
WALL FINISHES_REV-3

MADE BY: AASTHA

DATE: 22-02-24 **RD:** 02

SUBWAY
EVERSUB India Pvt Ltd

OFFICE :-
SUBWAY SYSTEMS INDIA PRIVATE LIMITED,
Awfis Space Solutions, 3rd Floor, Tower-9,
Unitech Cyber Park, Gurgaon, Haryana,
India-122002.



SHAFT

CIVIL LEGEND		
SYMBOL	DESCRIPTION	QTY IN SQ FT
	EXISTING BRICK WALL	
	6" THK BRICK WALL WITH PLASTER 6'-0" HEIGHT	804
	BRICK WALL WITH PLASTER	

NOTE:

- PLEASE REFER PLUMBING & DUCTING LAYOUT FOR HEIGHT
- ALL HEIGHT ARE FROM FINISH FLOOR LEVEL

F-F-043
110.82 SQM
 seating 42nos.

SITE:
FF-43_HYDERABAD
AIRPORT_Domestic

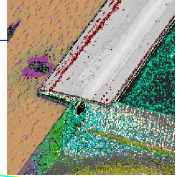
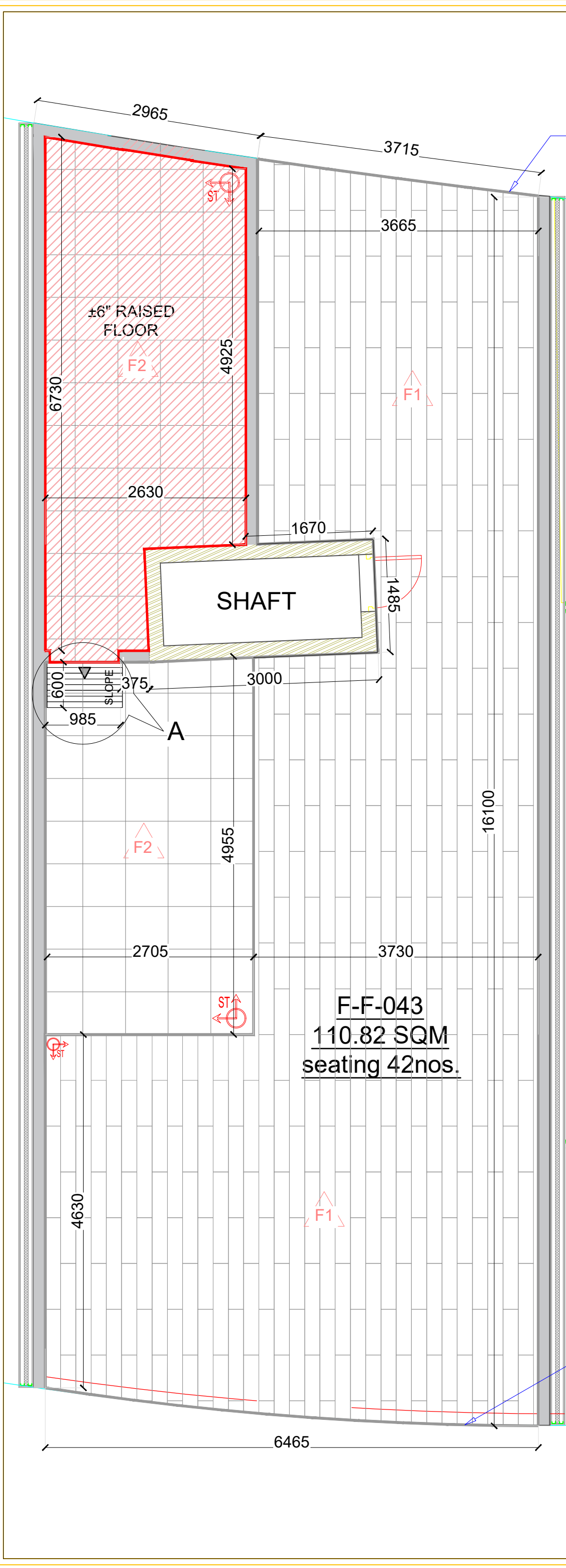
DRAWING TITLE:
CIVIL LAYOUT_REV-2

MADE BY: **AASTHA**

DATE: **19-02-24** RD: **03**

SUBWAY
 EVERSUB India Pvt Ltd

OFFICE :-
 SUBWAY SYSTEMS INDIA PRIVATE
 LIMITED,
 Awfis Space Solutions, 3rd Floor, Tower-9,
 Gitech Cyber Park, Gurgaon, Haryana,
 India-122002.

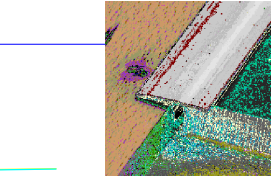
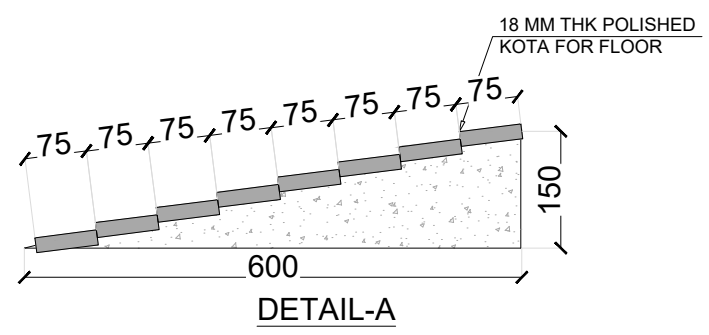


6MM S.S TRANSITION STRIP TO BE ADDED AT THE ENTRANCE TO SEPARATE THE MALL'S FLOORING FROM THE SUBWAY FLOORING



REFERENCE IMAGE FOR SLOPE IN KOTA STONE

FLOOR SCHEDULE				
NOTE: THE SUBWAY STORE DESIGN DEPARTMENT WILL NOT ACCEPT RESPONSIBILITY FOR ANY INACCURACIES. THE CALCULATIONS PROVIDED BELOW MUST BE VERIFIED BY THE G.C. AND FRANCHISE OWNER BEFORE ANY ORDER FOR THESE MATERIALS IS ACCEPTED AND PLACED.				
IMAGE	SYMBOL	ROOM	MATERIAL	AREA IN SFT.
	F2	SERVICE AREA / BOH	POLISHED KOTA STONE 22" X 22"	761.00
	F1	CUSTOMER AREA 1	WOODEN FLOORING (CLASSIC OAK - 1200 MM X 200 MM) MAKE JOHNSON	1932.00
RAISED FLOOR IN BOH AREA				
15% SKIRTING & WASTAGE INCLUDED IN THIS AREA				



6MM S.S TRANSITION STRIP TO BE ADDED AT THE ENTRANCE TO SEPARATE THE MALL'S FLOORING FROM THE SUBWAY FLOORING

SITE:
FF-43_HYDERABAD AIRPORT_Domestic

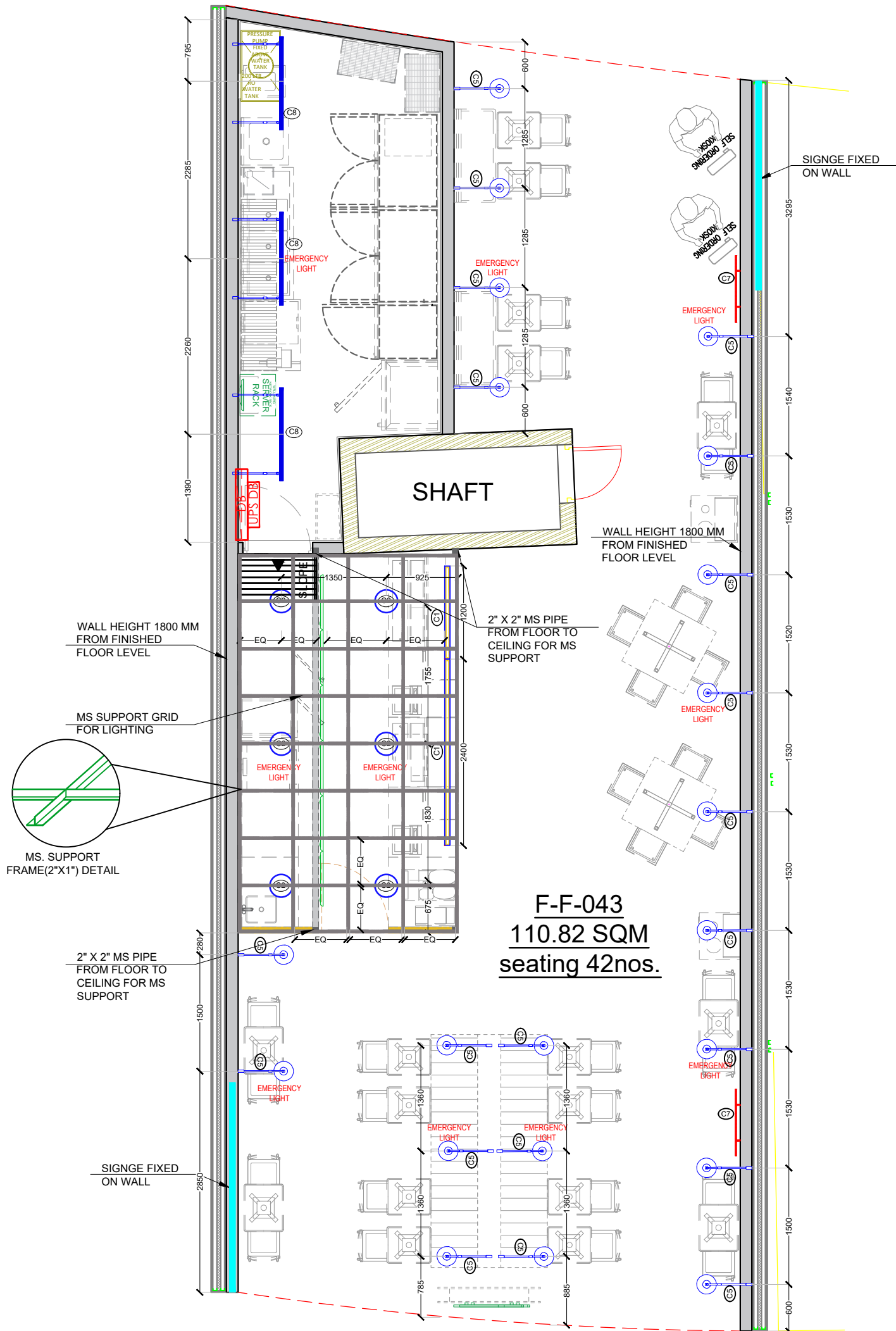
DRAWING TITLE:
FLOORING LAYOUT_REV-2

MADE BY: **AASTHA**

DATE: **19-02-24** RD: **04**

SUBWAY
EVERSUB India Pvt Ltd

OFFICE :-
SUBWAY SYSTEMS INDIA PRIVATE LIMITED,
Awfis Space Solutions, 3rd Floor, Tower-9,
Gitech Cyber Park, Gurgaon, Haryana,
India-122002.



F-F-043
110.82 SQM
seating 42nos.

CEILING FIXTURE AND LIGHTING SCHEDULE

IMAGE	#	MODEL	COUNT	DESCRIPTION	WATTAGE	TOTAL WATTS	
	C1	SUSPENDED LINEAR CHANNEL LIGHT	1	8' LENGTHS, 72 W, JOINTER & ADDITIONAL STRING REQUIRE (HEIGHT 7' FROM LIGHT TO SLAB)	72	1590	
	C1	SUSPENDED LINEAR CHANNEL LIGHT	1	4' LENGTHS, 36 W, JOINTER & ADDITIONAL STRING REQUIRE (HEIGHT 7' FROM LIGHT TO SLAB)	36		
	C2	PHILIPS SURFACE MOUNTED PLUS 15W ROUND LED DOWNLIGHTER	6	CEILING 15 W LEDLIGHT. 4000K, 1200 LUMEN OUTPUT	90		
	C5	WALL HANGING LIGHT	21	WATTAGE 20 W, ALUMINIUM BODY POWDER COATED IN BLACK, CLEAN DIFFUSER, HIGH POWER HIGH LUMEN OUTPUT LED, HIGH EFFICIENCY REFLECTOR OPTICS, EFFECTIVE THERMAL MANAGEMENT WITH MOVEABLE ANGLE	420		
	C7	WALL DECORATIVE LIGHT	18	WATTAGE 12 WATT	864		
	C8	LED TUBELIGHT FIXED WITH MS FRAME FROM WALL WITH NECESSARY SUPPORT	3	4 FEET TUBELIGHT 36 WATT	108		
MAKE- PHILIPS, WIPRO, CROMPTON,SYSKA							

key plan



SITE:
FF-43_HYDERABAD Domestic Airport

DRAWING TITLE :
LIGHTING MARK-OUT LAYOUT_REV-3

MADE BY AASTHA

DATE 22-02-2024 **RD** 07

SUBWAY
EVERSUB India Pvt Ltd

OFFICE :-
SUBWAY SYSTEMS INDIA PRIVATE LIMITED,
Aavla Space Solutions, 3rd Floor, Tower-9,
Unitech Cyber Park, Gurgaon, Haryana,
India-122002.

PRESSURE PUMP
HT @60" FROM FFL

GYSER HT
@54" FROM FFL

RO POINTS HT
@54" FROM FFL

2 DOOR AND
STEREO POINT
HT @60" FROM FFL

2 DOOR
HT @60" FROM FFL

1 DOOR HT
@60" FROM FFL

SPARE POINTS
@20" FROM FFL

BAKING OVEN 5 PIN 32 AMP
INDUSTRIAL SOCKET HT
@60" FROM FFL

SPARE POINTS
@20" FROM FFL

SHAFT

DMB HT
@80" FROM FFL

DB HEIGHT @750MM
FROM FFL & BELOW AREA
UPS DB WILL FIXED @
300MM FROM FFL

VISSI COOLER REF.
@ 20" FROM FFL

SPEED OVEN 5 PIN 32 AMP
INDUSTRIAL SOCKET HT
@48" FROM FFL

1 NOS SPARE POINT
HT @48" FROM FFL

2 NOS SPARE POINT
HT @48" FROM FFL

MAKELINE POINT
HT @24" FROM FFL

COFFEE MACHINE
HT @24" FROM FFL

F-F-043
110.82 SQM
seating 42nos.

FLY CATCHER @4'0" HT.
DONT GIVE SOCKET
CONNECT TO THE
DIRECT

SPARE POINTS
@18" FROM FFL

SPARE POINTS
@18" FROM FFL

LED STANDEE POINT
@ 24"

JUNCTION BOX FOR
CHOICE MARK SIGN

LED STANDEE POINT
@ 24"

KIOSK
POINT WILL COME FROM
FLOOR RACEWAY

KIOSK
POINT WILL COME FROM
FLOOR RACEWAY

POWER LEGEND:-

SYMBOL	DESCRIPTION
	JUNCTION BOX
	RAW POWER 16A 5PIN SWITCH SOCKET OUTLET, 6 Sq.mm Cu Wire
	RAW POWER 25A POWER POINT, 6 Sq.mm Cu Wire
	CAT6 INFORMATION OUTLET
	RJ11 TELEPHONE OUTLET
	UPS POWER 2NO. 16A 5PIN SWITCH SOCKET OUTLET
	LIGHTING SWITCH BOARD
	DB
	UPS SUPPLY
	AIR CURTAIN

ALL WIRES BY FRLS WILL BE USED, PVC CONDUITS WILL BE USED (MAKE-SUDHAKAR, SHAKTI)
ALL CABLE GLANDS TO BE PROPERLY EARTHED THROUGH STANDARD GLAND RING INTERNALLY AND TO BE TERMINATED AT COMMON EARTH STRIP (MAKE FINOLEX, POLY CAB, RR CABLES, KEI)
ALL IT CABLES AND ACCESSORIES SHALL BE OF BELDEN MAKE ONLY (PART CODE-7834ANC)
DB, MCB, RCBO, ELCB & MCCB- LEGRAND, SIEMENS, ABB, SCHNEIDER
SWITCH SOCKETS- ANCHOR ROMA, LEGRAND, HAVELLS CRABTREE, FINOLEX, L&T, SWITCH GEAR

key plan



SITE:
FF-43_HYDERABAD
Domestic Airport

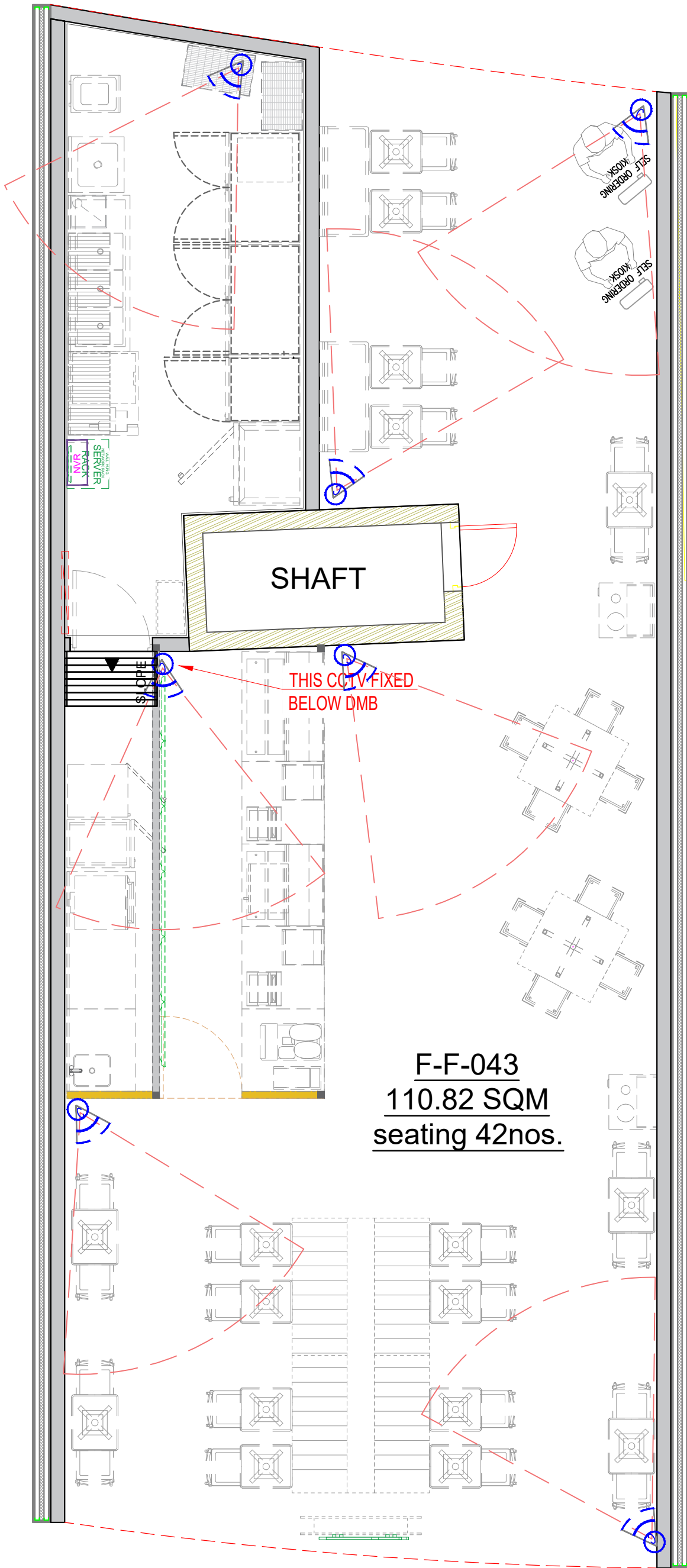
DRAWING TITLE :
ELECTRICAL & DATA
LAYOUT_REV-2

MADE BY AASTHA

DATE 22TH FEB 2024 **RD** 08

SUBWAY
EVERSUB India Pvt Ltd

OFFICE :-
SUBWAY SYSTEMS INDIA PRIVATE
LIMITED,
Aurika Space Solutions, 3rd Floor, Tower-9,
Gitech Cyber Park, Gurgaon, Haryana,
India-122002.



F-F-043
110.82 SQM
seating 42nos.

CCTV SYS LEGEND:-

SYMBOL	DESCRIPTION
	FIXED DOME CAMERA IR RANGE - FIXED CAMERA FROM FFL. 7'-6"FT HEIGHT
	NVR
	SERVER RACK
	CAT-6 CABLE
ADD ADDITIONAL CAT-6 POINT ABOVE DMB AREA & SERVER AREA @ 4FEET HEIGHT	
UPS SUPPLY TO BE PROVIDED, BACK UP OF MINIMUM HALF & HOUR	



CCTV HANG ON WALL WITH MS SUPPORT

key plan



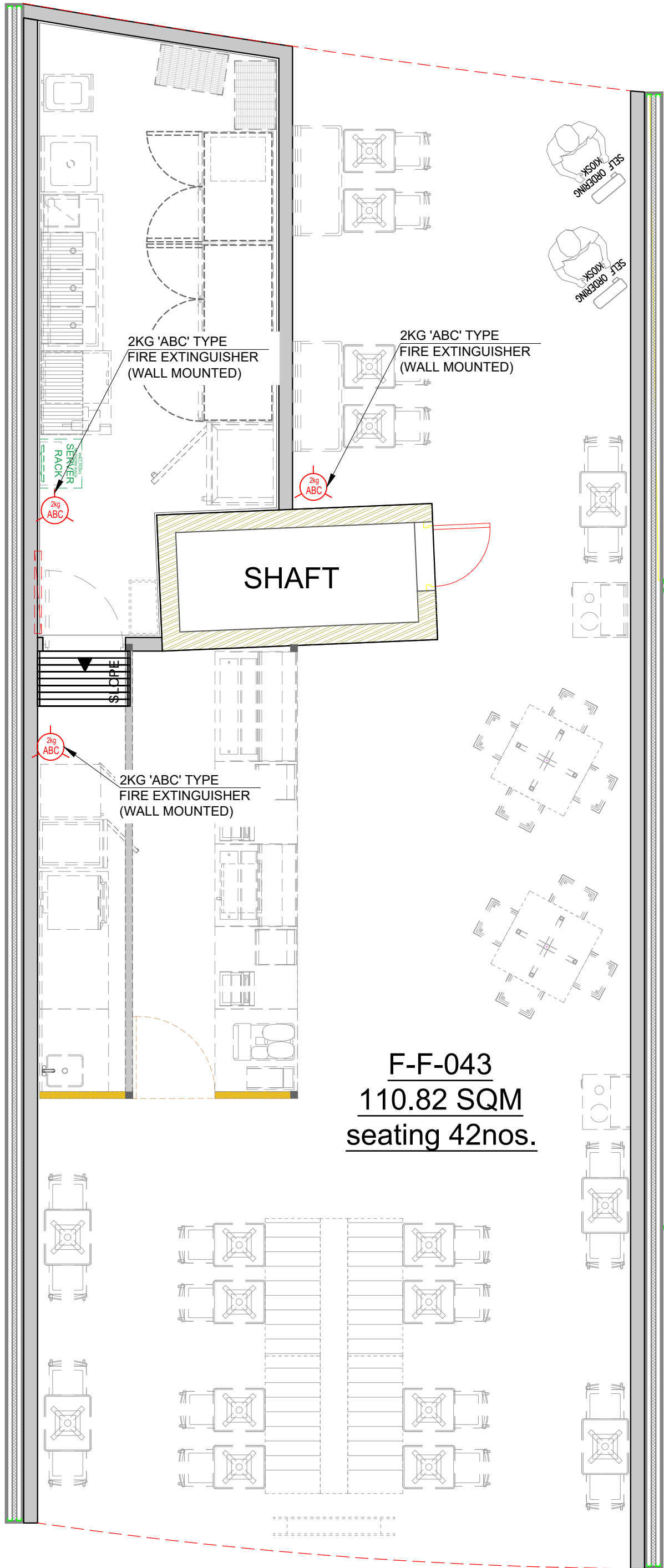
SITE:
FF-43_HYDERABAD Domestic Airport

DRAWING TITLE:
CCTV LAYOUT_REV-2

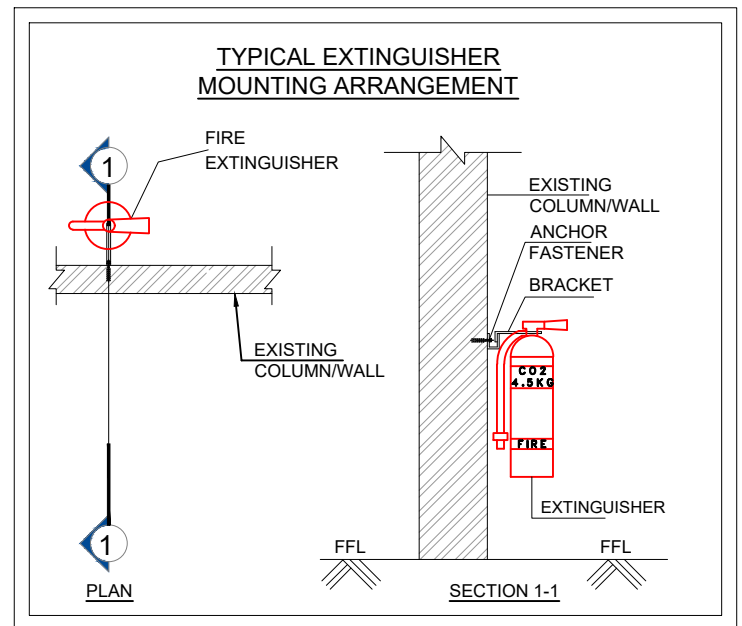
MADE BY	AASTHA
DATE	22nd FEB 2024
RO	11

SUBWAY
 EVERSUB India Pvt Ltd

OFFICE :-
 SUBWAY SYSTEMS INDIA PRIVATE LIMITED,
 Awlis Space Solutions, 3rd Floor, Tower-9,
 Unitech Cyber Park, Gurgaon, Haryana,
 India-122002.



F-F-043
110.82 SQM
seating 42nos.



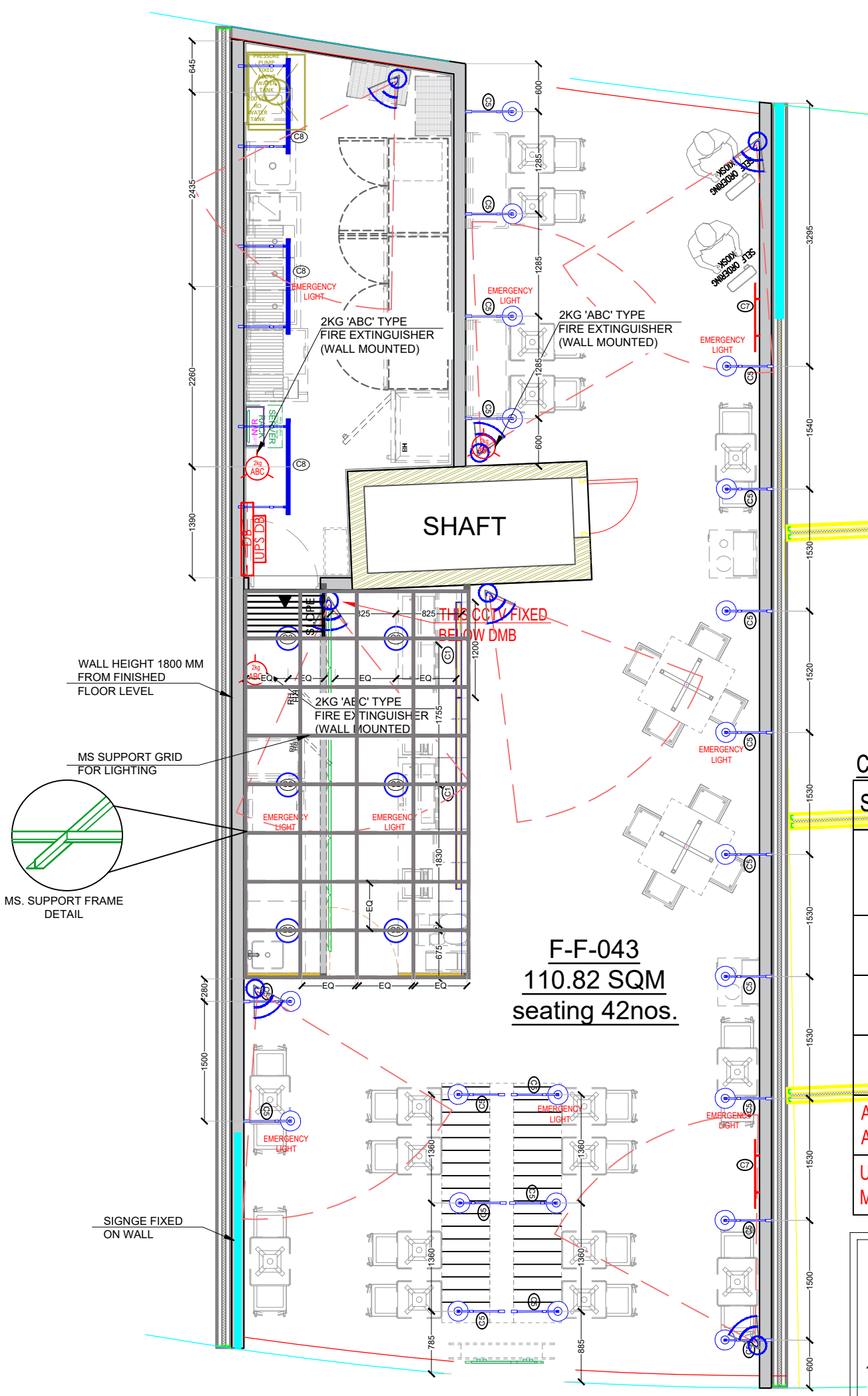
SITE:
FF-43 HYDERABAD
Domestic Airport

DRAWING TITLE:
FAS LAYOUT_REV-3

MADE BY	AASTHA
DATE	22nd FEB 2024
RO	10

SUBWAY
EVERSUB India Pvt Ltd

OFFICE :-
SUBWAY SYSTEMS INDIA PRIVATE
LIMITED,
Awfis Space Solutions, 3rd Floor, Tower-9,
Unitech Cyber Park, Gurgaon, Haryana,
India-122002.

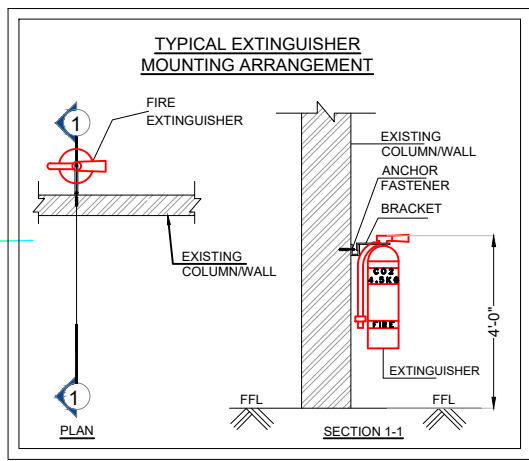


CCTV SYS LEGEND:-

SYMBOL	DESCRIPTION
	FIXED DOME CAMERA IR RANGE - FIXED CAMERA FROM FFL. 7'-6" FT HEIGHT
	NVR
	SERVER RACK
	CAT-6 CABLE

ADD ADDITIONAL CAT-6 POINT ABOVE DMB AREA & SERVER AREA @ 4FEET HEIGHT

UPS SUPPLY TO BE PROVIDED, BACK UP OF MINIMUM HALF & HOUR



F-F-043
110.82 SQM
seating 42nos.

CEILING FIXTURE AND LIGHTING SCHEDULE

IMAGE	#	MODEL	COUNT	DESCRIPTION	WATTAGE	TOTAL WATTS	
	C1	SUSPENDED LINEAR CHANNEL LIGHT	1	8' LENGTHS, 72 W, JOINTER & ADDITIONAL STRING REQUIRE (HEIGHT 7' FROM LIGHT TO SLAB)	72	1590	
	C1	SUSPENDED LINEAR CHANNEL LIGHT	1	4' LENGTHS, 36 W, JOINTER & ADDITIONAL STRING REQUIRE (HEIGHT 7' FROM LIGHT TO SLAB)	36		
	C2	PHILIPS SURFACE MOUNTED PLUS 15W ROUND LED DOWNLIGHTER	6	CEILING 15 W LEDLIGHT. 4000K, 1200 LUMEN OUTPUT	90		
	C5	WALL HANGING LIGHT	21	WATTAGE 20 W, ALUMINIUM BODY POWDER COATED IN BLACK, CLEAN DIFFUSER, HIGH POWER HIGH LUMEN OUTPUT LED, HIGH EFFICIENCY REFLECTOR OPTICS, EFFECTIVE THERMAL MANAGEMENT WITH MOVEABLE ANGLE	420		
	C7	WALL DECORATIVE LIGHT	18	WATTAGE 12 WATT	864		
	C8	LED TUBELIGHT FIXED WITH MS FRAME FROM WALL WITH NECESSARY SUPPORT	3	4 FEET TUBELIGHT 36 WATT	108		
MAKE- PHILIPS, WIPRO, CROMPTON, SYSKA							



SITE:
FF-43_HYDERABAD Domestic Airport

DRAWING TITLE:
RCP LAYOUT -REV-3

MADE BY: AASTHA

DATE: 22nd FEB 2024 **RO:** 07

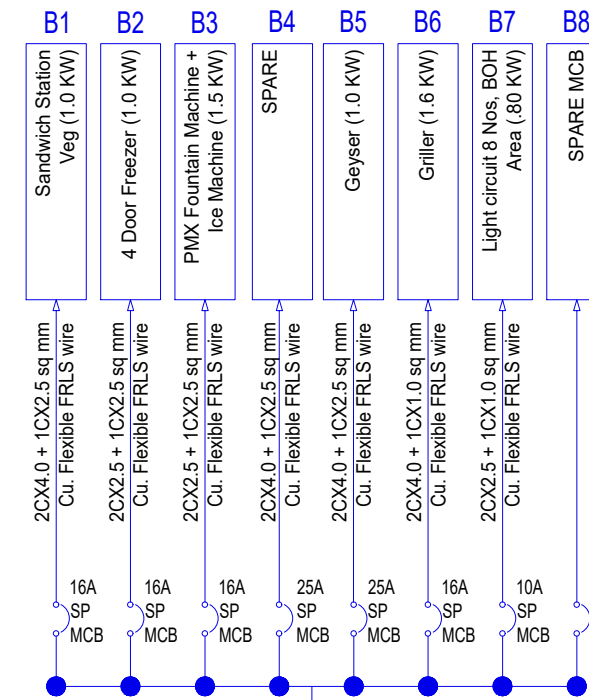
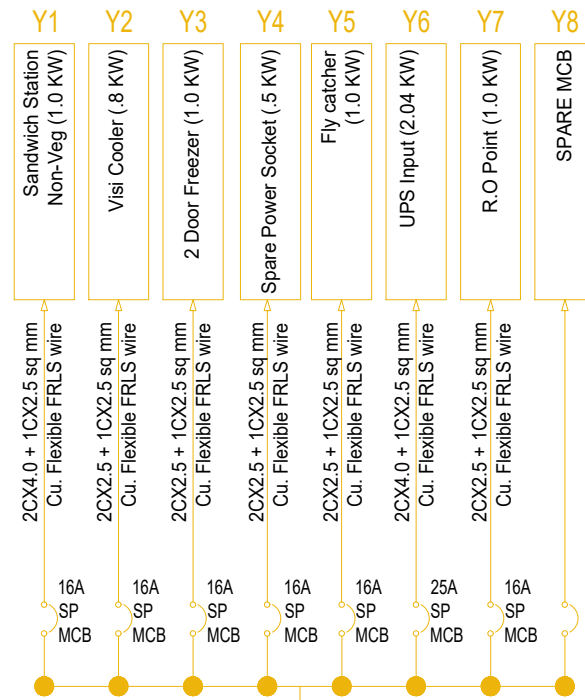
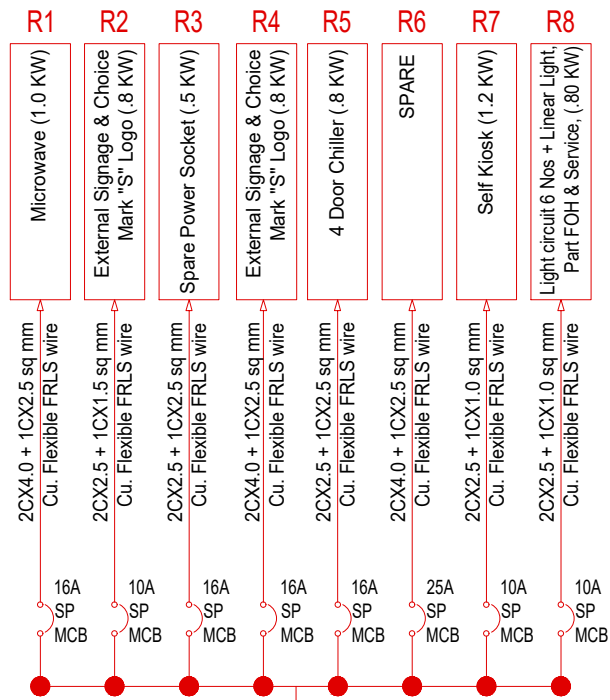
SUBWAY
EVERSUB India Pvt Ltd

OFFICE :-
SUBWAY SYSTEMS INDIA PRIVATE LIMITED,
Aurika Space Solutions, 3rd Floor, Tower-9,
Unitech Cyber Park, Gurgaon, Haryana,
India-122002.

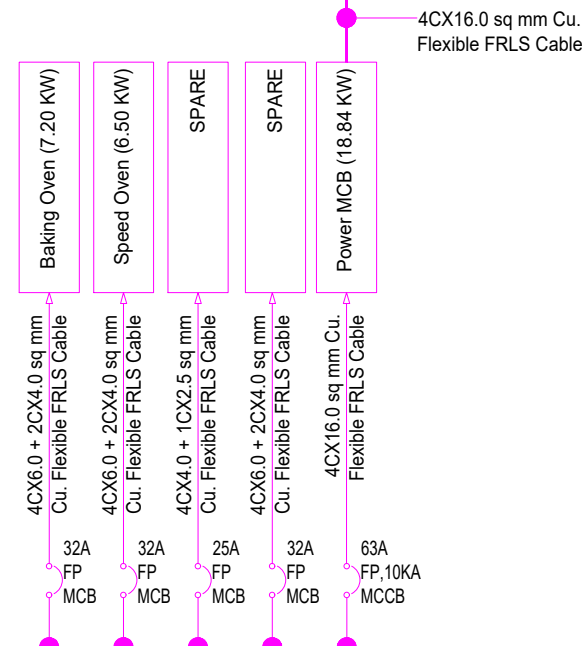
RED PHASE Load : 5.9 Kw

YELLOW PHASE Load : 6.8 Kw

BLUE PHASE Load : 6.9 Kw



7 SEGMENT DB



4P 100A MCCB

4 C x 25 Sq mm Cu CABLE
4 C x 35 Sq mm AL CABLE

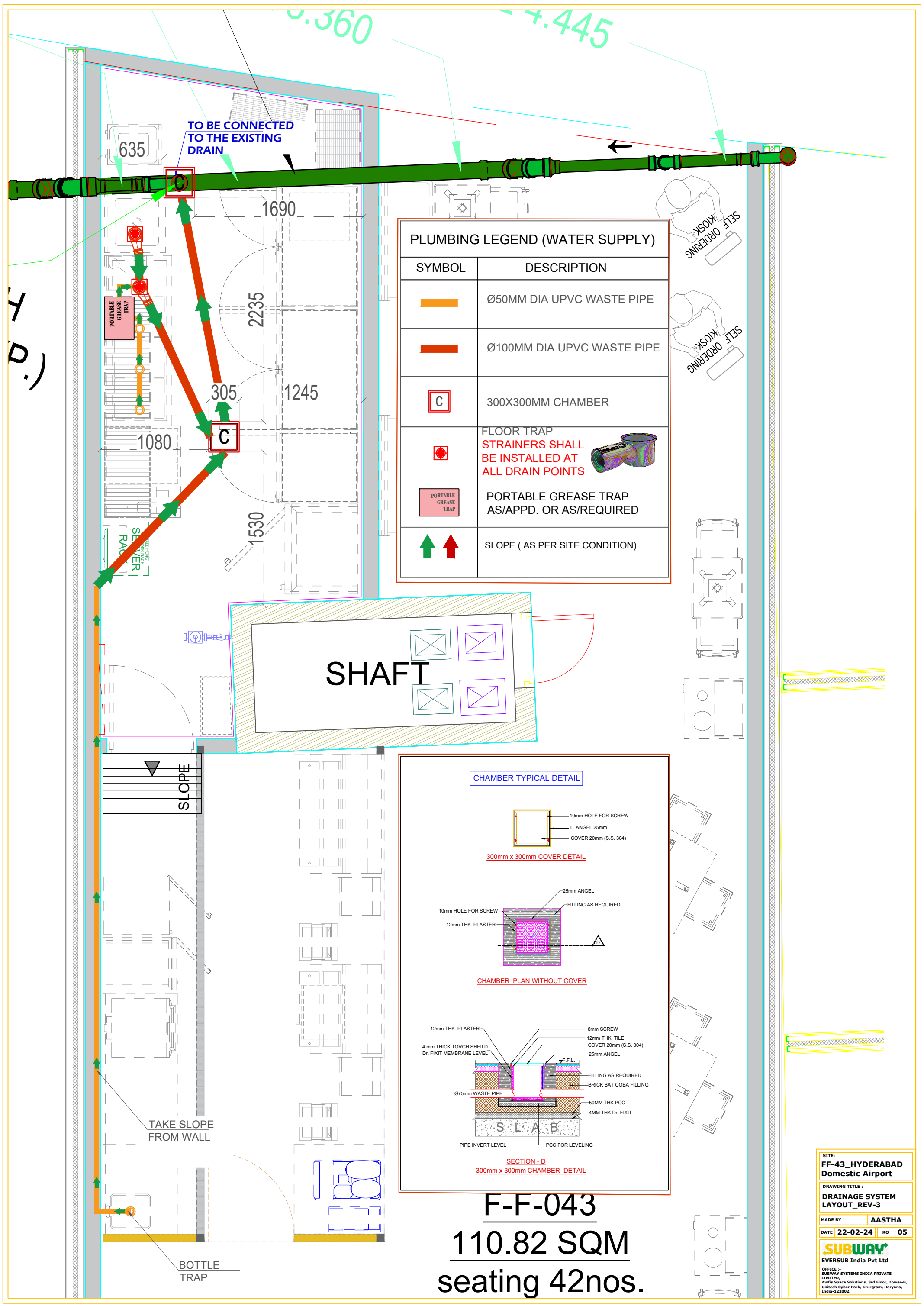
LANDLORD
METER /
PANEL



Electrical Load Distribution and SLD Details

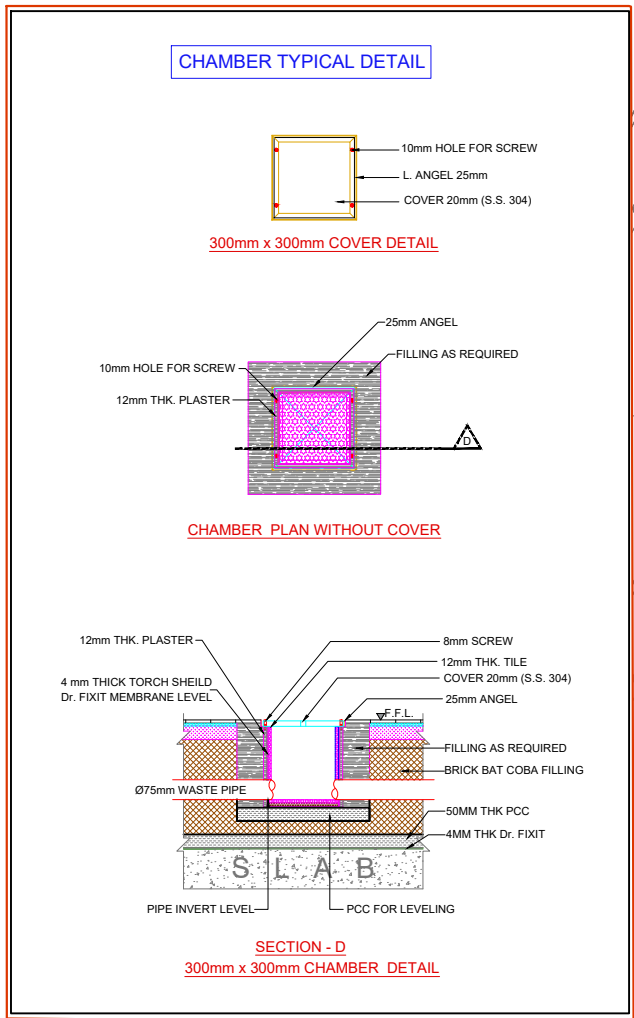
**FF-43_HYDERABAD
AIRPORT_International-West**

S No.	Description	Circuit Nos.	QTY	Unit Load(KW)			MCCB /MCB	Supply Type	Demand Load	Diversity Factor	Maximum Demand	Wire Size(Sqmm)	Remarks	
				R	Y	B								
	Baking Oven (NUVU/Etc)	3P	1	7.20			32A,4P,MCB	3PH	7.20	0.30	2.16	4x6.0+2x4.0 sq mm Cu.Flexible FRLS wire		
	Speed Oven (Merry Chef, Turbo Chef)	3P	1	6.50			32A,4P,MCB	3PH	6.50	0.60	3.90	4x6.0+2x4.0 sq mm Cu.Flexible FRLS wire		
	3 Phasse AC		0	3.90			25A,4P,MCB	3PH	0.00	0.80	0.00	2x4.0+1x2.5 sq mm Cu.Flexible FRLS wire		
1	Microwave	R1	1	1.00	1.00		16A,SP,MCB	1PH	1.00	0.50	0.50	2x4.0+1x2.5 sq mm Cu.Flexible FRLS wire		
2	External Signage & Choice mark	R2	3	2.00	6.00		10A,SP,MCB	1PH	6.00	0.50	3.00	2x2.5+1x1.5 sq mm Cu.Flexible FRLS wire		
3	Spare power socket	R3	3	1.00	3.00		16A,SP,MCB	1PH	3.00	0.40	1.20	2x4.0+1x2.5 sq mm Cu.Flexible FRLS wire		
4	Hi Wall 1.5 TR AC for BOH/cofee machine	R4	1	1.90	1.90		16A,SP,MCB	1PH	1.90	0.70	1.33	2x4.0+1x2.5 sq mm Cu.Flexible FRLS wire		
5	4 door chiller	R5	1	0.80	0.80		16A,SP,MCB	1PH	0.80	0.70	0.56	2x4.0+1x2.5 sq mm Cu.Flexible FRLS wire		
6	2 door freezer	R6	1	1.00	1.00		25A,SP,MCB	1PH	1.00	0.70	0.70	2x4.0+1x2.5 sq mm Cu.Flexible FRLS wire		
7	Light switch board	R7	1	2.00	2.00		6A,SP,MCB	1PH	2.00	1.00	2.00	4x1.5+1x1.0 sq mm Cu.Flexible FRLS wire		
8	SPARE	Y1	3	0.40		1.20	16A,SP,MCB	1PH	1.20	0.40	0.48	2x4.0+1x2.5 sq mm Cu.Flexible FRLS wire		
9	Visi Cooler	Y2	1	0.80		0.80	16A,SP,MCB	1PH	0.80	0.60	0.48	2x4.0+1x2.5 sq mm Cu.Flexible FRLS wire		
10	SPARE(Mobile charging point)	Y3	5	1.00		5.00	16A,SP,MCB	1PH	5.00	0.60	3.00	2x4.0+1x2.5 sq mm Cu.Flexible FRLS wire		
11	Spare power socket (for self kiosk)	Y4	2	0.50		1.00	16A,SP,MCB	1PH	1.00	0.40	0.40	2x4.0+1x2.5 sq mm Cu.Flexible FRLS wire		
12	Air curtain/Booster pump	Y5	2	1.00		2.00	16A,SP,MCB	1PH	2.00	0.60	1.20	2x4.0+1x2.5 sq mm Cu.Flexible FRLS wire		
13	UPS Input	Y6	1	1.96		1.96	25A,SP,MCB	1PH	1.96	0.80	1.57	2x4.0+1x2.5 sq mm Cu.Flexible FRLS wire		
14	Griller	Y7	1	1.60		1.60	6A,SP,MCB	1PH	1.60	0.70	1.12	2x1.5+1x1.0 sq mm Cu.Flexible FRLS wire		
15	Sandwich station Veg	B1	1	1.00		1.00	16A,SP,MCB	1PH	1.00	0.80	0.80	2x4.0+1x2.5 sq mm Cu.Flexible FRLS wire		
16	4 door freezer	B2	1	1.00		1.00	16A,SP,MCB	1PH	1.00	0.60	0.60	2x4.0+1x2.5sq mm Cu.Flexible FRLS wire		
17	PMX fountain machine * Ice Machine	B3	1	1.50		1.50	16A,SP,MCB	1PH	1.50	0.70	1.05	2x4.0+1x2.5sq mm Cu.Flexible FRLS wire		
18	Sandwich station Non veg	B4	1	1.00		1.00	10A,SP,MCB	1PH	1.00	0.80	0.80	2x2.5+1x1.5sq mm Cu.Flexible FRLS wire		
19	Geyser	B5	1	1.00		1.00	25A,SP,MCB	1PH	1.00	0.50	0.50	2x4.0+1x2.50 sq mm Cu.Flexible FRLS		
20	RO Point	B6	1	1.00		1.00	16A,SP,MCB	1PH	1.00	0.80	0.80	2x4.0+1x2.50 sq mm Cu.Flexible FRLS		
21	Light switch board	B7	1	2.00		2.00	10A,SP,MCB	1PH	2.00	1.00	2.00	4x1.5+1x1.0 sq mm Cu.Flexible FRLS wire		
UPS DB-U1														
1	UPS POWER CIRCUIT-U1/1 (6X6A Switch Socket Outlet FOR Cash	B1	1	0.60			10A SP MCB	1PH				2x2.5+1x1.5 sq mm Cu.Flexible FRLS wire		
2	UPS POWER CIRCUIT-U1/2 (4x6A Switch Socket for DMB)	B2	1	0.40			10A SP MCB	1PH				2x2.5+1x1.5 sq mm Cu.Flexible FRLS wire		
3	UPS POWER CIRCUIT-U1/3 (4x6A Switch Socket for DMB)	B3	1	0.40			10A SP MCB	1PH				2x2.5+1x1.5 sq mm Cu.Flexible FRLS wire		
4	UPS POWER CIRCUIT-U1/4 (4x6A Switch Socket for Server Rack & NVR)	B4	1	0.40			10A SP MCB	1PH				2x2.5+1x1.5 sq mm Cu.Flexible FRLS wire		
5	LIGHT CIRCUIT-U1/5 (6 Nos Emergency Light ckt)	B5	4	0.16			6A SP MCB	1PH				2x1.5+1x1.0 sq mm Cu.Flexible FRLS wire		
6	SELF KIOSK	B6	2	0.60			10A SP MCB	1PH				2x2.5+1x1.5 sq mm Cu.Flexible FRLS wire		
TOTAL					15.70	13.56	8.50	63A, 4P MCB	TOTAL LOAD	51.46	DIVERSIFIED LOAD	30.15	30	KW
A	UPS SELECTION						B	DG SELECTION			NOT REQUIRED IN MALL			
	TOTAL UPS LOAD-01			2.56				TOTAL ELECTRIC LOAD					KW	
	TOTAL LOAD IN KVA @ 80% PF			3.20				LOAD IN KVA @ 80% PF					KVA	
	TOTAL LOAD IN KVA @80% LOADING FACTOR			5.00				LOAD IN KVA @80% LOADING FACTOR					KVA	
	UPS SELECTION			5 KVA				DG SELECTION				NR		



PLUMBING LEGEND (WATER SUPPLY)

SYMBOL	DESCRIPTION
	Ø50MM DIA UPVC WASTE PIPE
	Ø100MM DIA UPVC WASTE PIPE
	300X300MM CHAMBER
	FLOOR TRAP STRAINERS SHALL BE INSTALLED AT ALL DRAIN POINTS
	PORTABLE GREASE TRAP AS/APPD. OR AS/REQUIRED
	SLOPE (AS PER SITE CONDITION)



F-F-043
110.82 SQM
 seating 42nos.

SITE:
FF-43_HYDERABAD
Domestic Airport

DRAWING TITLE:
DRAINAGE SYSTEM
LAYOUT_REV-3

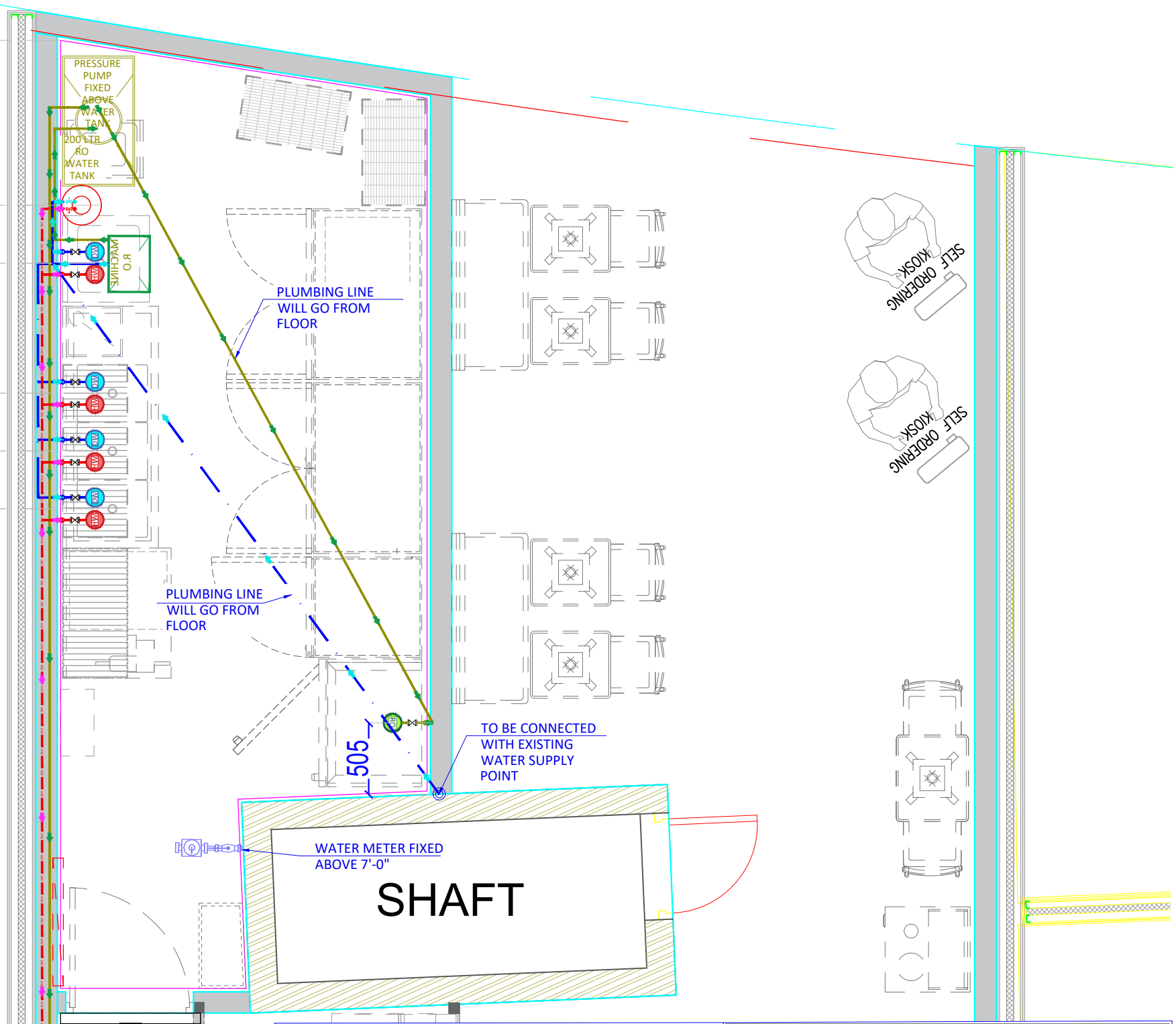
MADE BY: AASTHA

DATE: 22-02-24 **RD:** 05

SUBWAY
 EVERSUB India Pvt Ltd

OFFICE :-
 SUBWAY SYSTEMS INDIA PRIVATE
 LIMITED,
 Awfis Space Solutions, 3rd Floor, Tower-9,
 Unitech Cyber Park, Gurgaon, Haryana,
 India-122002.

1165
410
915
405
405
8130



PLUMBING LEGEND (WATER SUPPLY)

	DESCRIPTION
	20mm TAP, (HWS) HOT WATER SUPPLY WITH VALVE AS/REQUIRED
	20mm TAP, (RWS) R.O WATER SUPPLY WITH VALVE AS/REQUIRED
	20mm TAP, (DWS) DOMESTIC WATER SUPPLY WITH VALVE AS/REQUIRED
	(HWS) HOT WATER SUPPLY LINE
	(RWS) R.O WATER SUPPLY LINE
	(DWS) DOMESTIC WATER SUPPLY LINE
	BALL VALVE OR ANGEL VALVE AS/REQUIRED.
	GEYSER AS/REQUIRED
	R.O MACHINE AS/REQUIRED
	200 LTRS RO WATER TANK TANK BOTTOM WILL BE @4'-0"

LEGEND FOR WATER SUPPLY HT.

EQUIPMENT NAME	WATER SUPPLY TAP HEIGHT	WATER SUPPLY CONNECTION
BACK COUNTER SINK	@24" FROM FINISH FLOOR LEVEL	HWS RWS
ICE MAKER	@24" FROM FINISH FLOOR LEVEL	RWS
SODA FOUNTAIN	@24" FROM FINISH FLOOR LEVEL	RWS
GEYSER	@48" FROM FINISH FLOOR LEVEL	DWS
RO PLANT	@36" FROM FINISH FLOOR LEVEL	DWS
MOP SINK	@30" FROM FINISH FLOOR LEVEL	HWS DWS
3 BOWL SINK	@24" FROM FINISH FLOOR LEVEL	HWS DWS
27 NO OVEN	@24" FROM FINISH FLOOR LEVEL	RWS

13
SQM
2nos.

SITE: FF-19_HYDERABAD AIRPORT_International-West

DRAWING TITLE: WATER SUPPLY LAYOUT_REV-3

MADE BY: AASTHA

DATE: 22-02-24 RD: 06

SUBWAY
EVERSUB India Pvt Ltd

OFFICE: SUBWAY SYSTEMS INDIA PRIVATE LIMITED, Awfis Space Solutions, 3rd Floor, Tower-9, Unitech Cyber Park, Gurgaon, Haryana, India-122002.