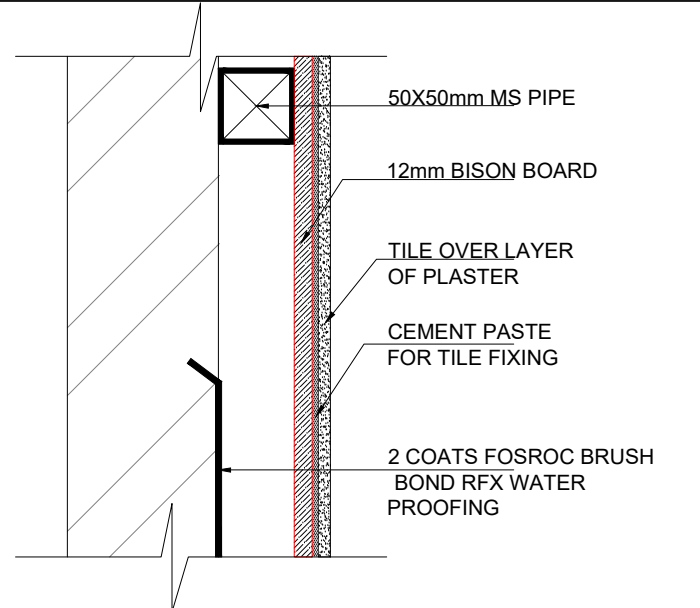


1 WATERPROOFING LAYOUT A3 SCALE:-1:40



2 DETAIL-1 A3 SCALE:-1:10

- WATER PROOFING METHODOLOGY:**
1. Removal of Top Screed from the Mother Slab.
  2. Cleaning of the Mother Slab with Hard Brush & Removal of Dirt from the Surface with Air Blowers
  3. Applying of the Fosroc RFX Brush Bond Coating on the mother slab with Brush in Clock wise directions & on all 4 Sides Walls till 450mm Height. If the Floor is raised 150mm
  4. After drying of the 1st Coat of the Brush Bond Coating. 2nd Coat is applied in the Anticlockwise Directions
  5. After drying of entire Surface say 24 Hours. we will fill Water to 6 Inch Levels for Ponding Testing.
  6. Water will be kept for observations for 72 Hours. If Leakage is observed. Water is emptied
  7. Above Procedure is Repeated.
  8. If No Leakage is observed after 72 Hours. Water will be drained out from the Floor Surface.
  9. Protective Screeding mixed with FOSROC NITOBOND SBR of Average 25mm thickness will be laid above water Proofing Surface with coving & Wall junction.
  10. After Dryings of Protective Screed say 2 Days. Drain Lines are laid on the Floor with Slope & main Drain lines chambers are done.
  12. After this floor raising by Light Seaproax block will be achieved followed with flooring material as desired.

WATERPROOFING LEGEND	
Symbol	Description
	Water Proofing
	Bund Wall

**NOTES:**  
 1) DO NOT SCALE THE DRAWINGS FOLLOW THE WRITTEN DIMENSIONS.  
 2) ALL THE DIMENSIONS SHOWN ARE IN ENGLISH UNITS.  
 3) ALL THE MATERIALS FOR CONSTRUCTION SHALL BE TO 'IS' STANDARDS AND AS PER THE SPECIFICATIONS BY THE ARCHITECT.  
 4) ANY AMBIGUITY FOUND IN THE DRAWING SHALL BE IMMEDIATELY BROUGHT TO THE NOTICE OF AN ARCHITECT.

**LEGEND:**

REVISIONS		
NO.	DESCRIPTION	DATE
		YYYY-MM-DD
		YYYY-MM-DD
		YYYY-MM-DD

SIGN/STAMP

AIRPORT NAME

LUCKNOW AIRPORT

UNIT NO

LOCATION

DOMESTIC SHA

BRAND NAME / PROJECT NAME

IDLI.COM

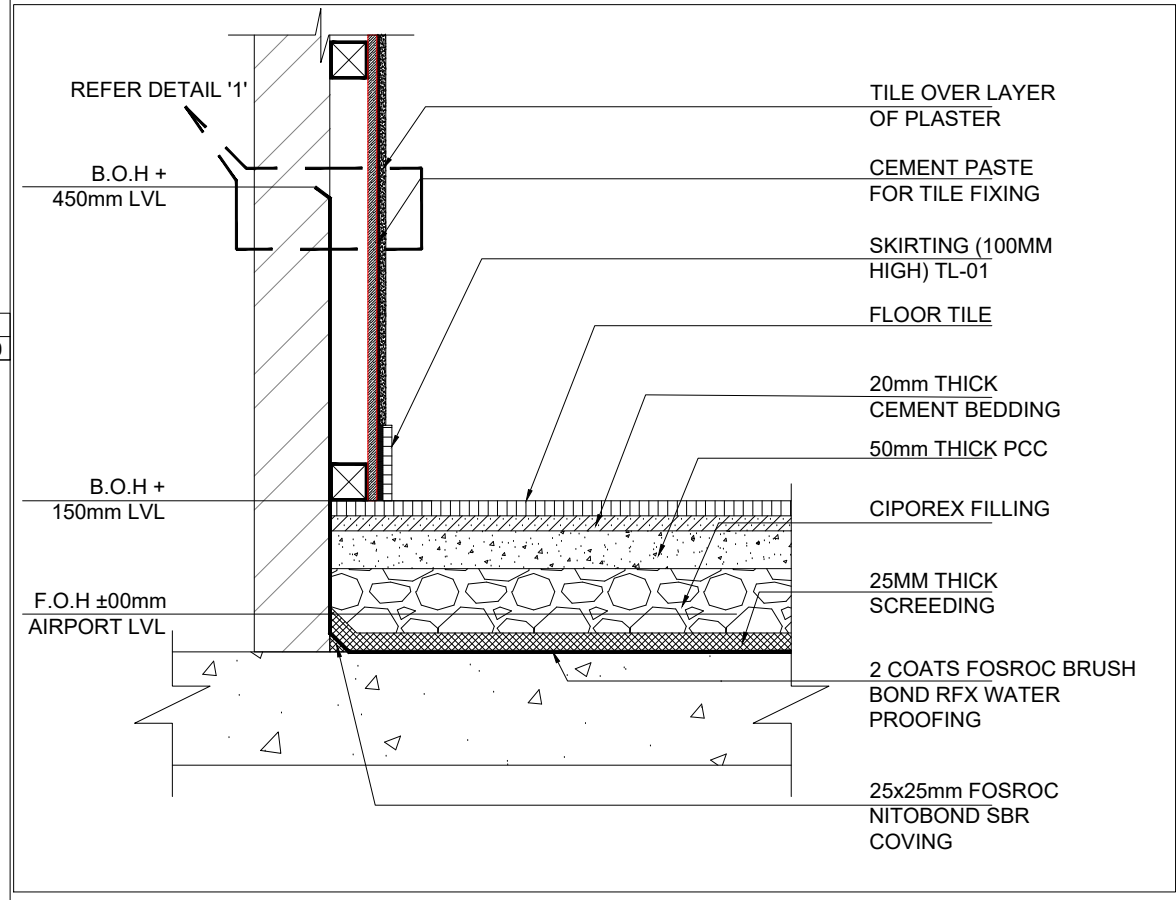
DRAWING TYPE

GFC

TITLE :  
WATERPROOFING LAYOUT

DRN BY	MS	SCALE	1:40	<b>R0</b>
CHKD BY	AP	REV		
DATE	2024-06-07			
DWG NO.	TFS_LKO_SHA_IDLI_GFC_D-103			

ARCHITECT: Genesis Architects Pvt. Ltd.  
 SHIV SAGAR ESTATE  
 A - BLOCK, 1ST FLOOR  
 ANNIE BESANT ROAD,  
 WORLI, MUMBAI 400018.  
 PH: +91 (22) 4322 4322



3 TYPICAL SECTION A3 SCALE:-1:10