



# COPPER EST. 1972 CHIMNEY

DESIGN DEVELOPMENT

22.05.2024



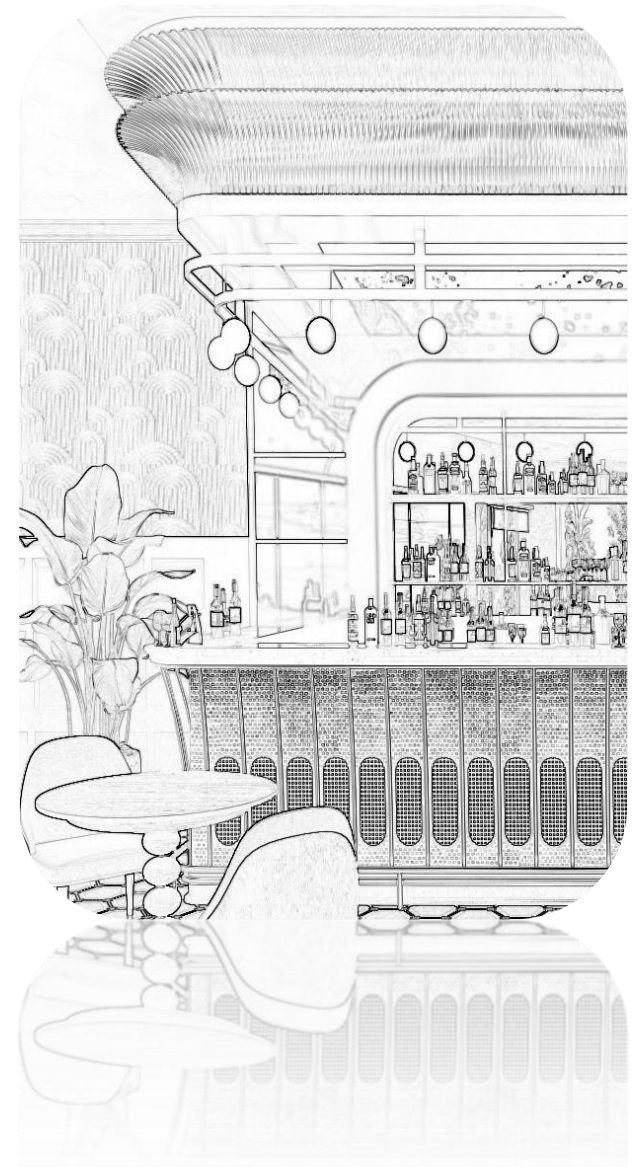
# CLIENT BRIEF

legendary brand making its debut flagship store in Bandra

- Creating a space that pays homage to the brand's history, while infusing it with complete new aesthetics
- blending the timeless charm of art deco with the rich heritage of Copper Chimney.
- provide a memorable and immersive dining experience, with every detail thoughtfully considered to capture the essence of the brand.

# DESIGN CONCEPT

The approach is rooted in the idea of creating a space that feels both familiar and fresh, blending the best of the past with the innovations of the present.

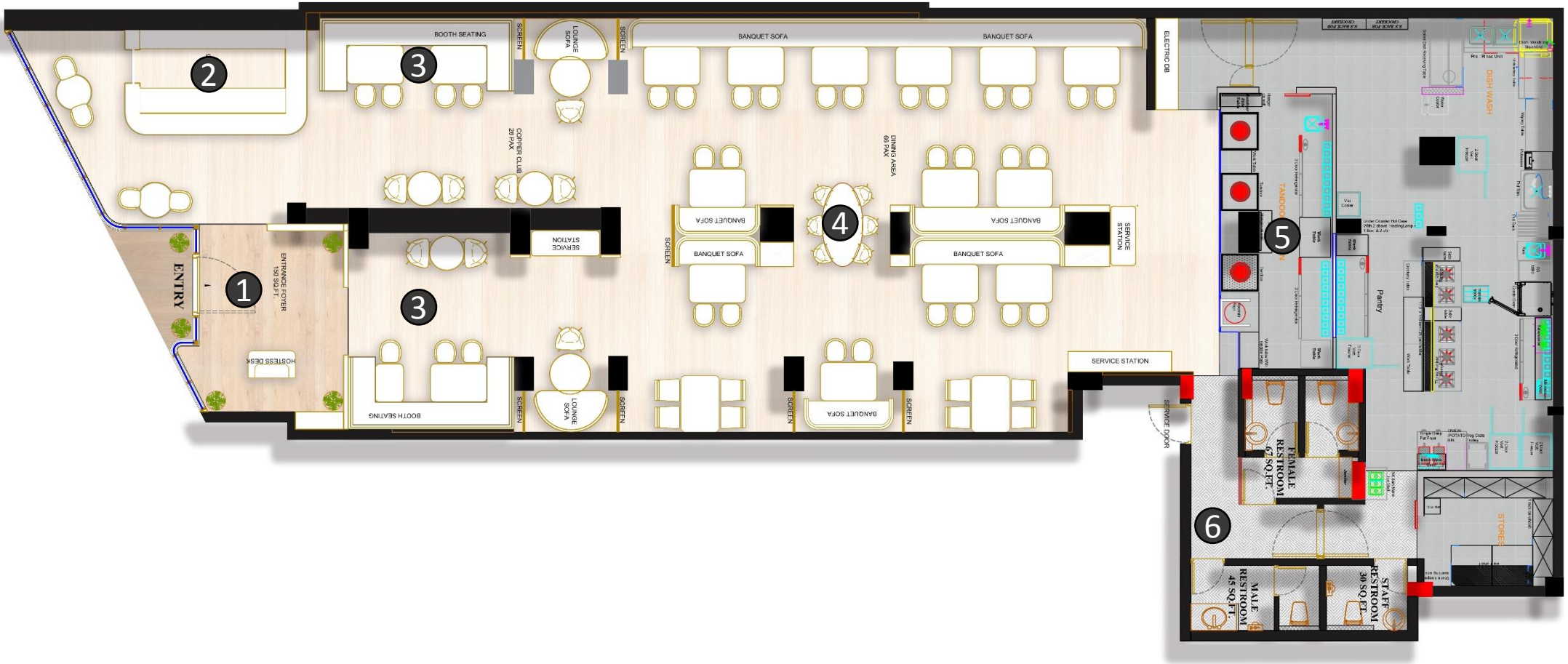


# But how?

This will be achieved through careful curation of materials, color schemes, and lighting that seamlessly blend elements of the 70s with contemporary touches.

Pointers for achieving this design concept include:

1. Selecting a color palette that nods to the 1970s while incorporating modern neutrals for balance.
2. Choosing furniture and decor pieces that reference the 1970s era, but updating them with contemporary materials and finishes.
3. Incorporating modern technology and sustainable design elements to bring the space into the modern era.
4. Creating a sense of flow and continuity throughout the space to ensure a seamless transition between the 1970s and the present day.



1. ENTRANCE FOYER
2. BAR AREA
3. COPPER CLUB
4. DINING AREA
5. LIVE KITCHEN
6. RESTROOMS

1. COPPER CLUB- 30 PAX
2. DINING AREA - 70 PAX
3. TOTAL PAX - 106 PAX
4. BAR - 5 PAX

## LAYOUT



## FAÇADE -

The green tile will be used as a focal point, adding depth and character to the space, while the wooden molding will bring warmth and richness to the interior. The clear glass facade will allow for an abundance of natural light to flood the space, creating an airy and open atmosphere. In contrast, the black granite molding will add a touch of modernity and contrast to the design, creating a sense of drama and depth.







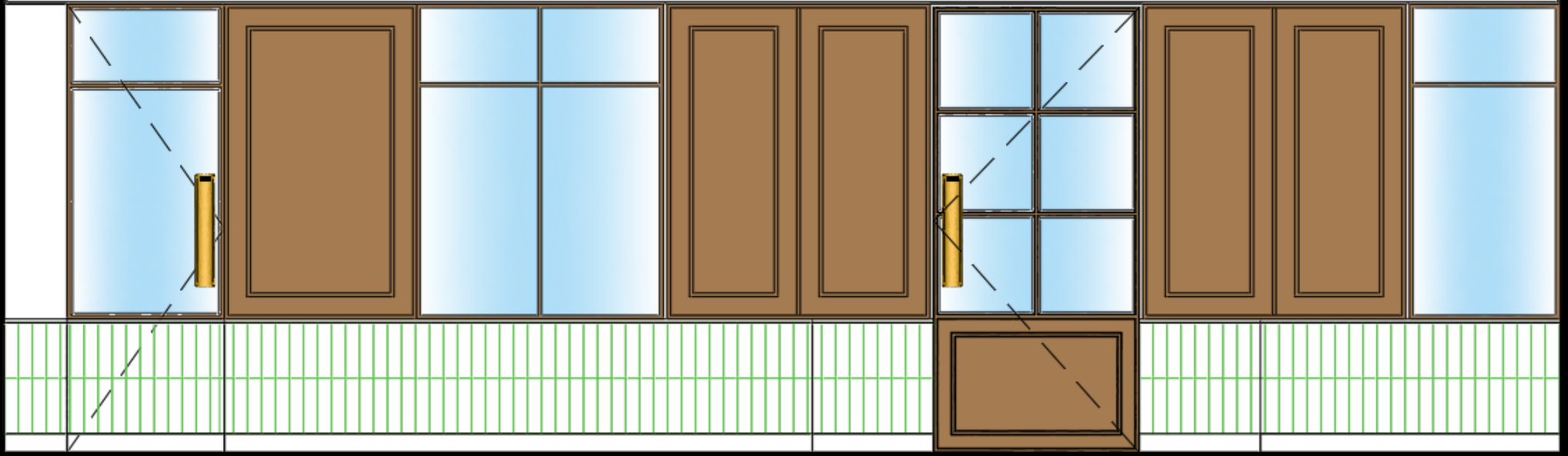
KEY PLAN

ॐ कॉपर चिमनी

स्थापना १९७२

ॐ COPPER CHIMNEY

EST. 1972



EXISTING DOOR

ENTRANCE

FACADE ELEVATION



KEY PLAN

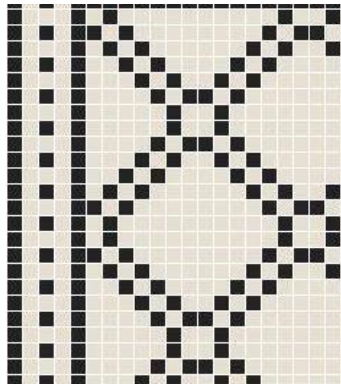




Arch opening



Granite molding



MOSIAC FLOORING



Green subway tile



TYPE 1 - Lowell carved crown molding



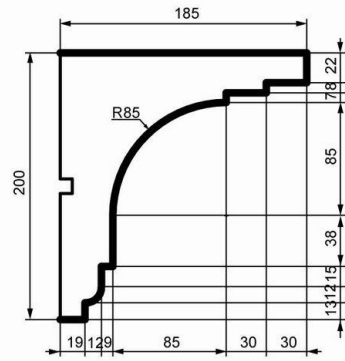
FACADE REFERENCE

## STORY WALL -

The entrance wall adorned with black and white photo frames. These frames capture the rich history and tradition of the restaurant, creating a connection to its past while also honoring its heritage. To complement the timeless elegance of the black and white photo frames, a vibrant and colorful art deco sofa serves as a bold focal point, adding a contemporary twist to the space.







POP MOLDING



LEGECEY FRAME



LAMP



GREY WILLIAM



CHAIR

# FOYER -

Art Deco-inspired foyer is to create a space that captures the opulence and glamour of the Art Deco era while providing a welcoming and elegant atmosphere for patrons.





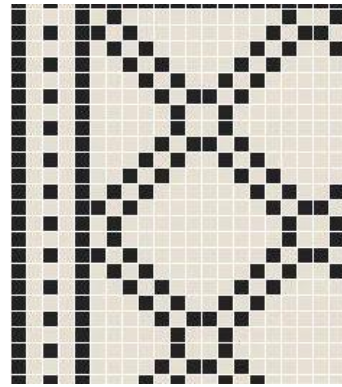


KEY PLAN

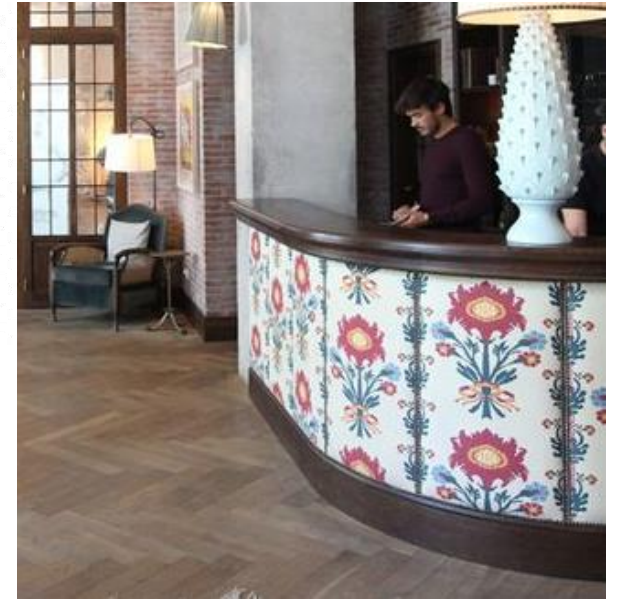




Arch opening



MOSIAC FLOORING



HOSTESS DESK WALLPAPER



WALLPAPER



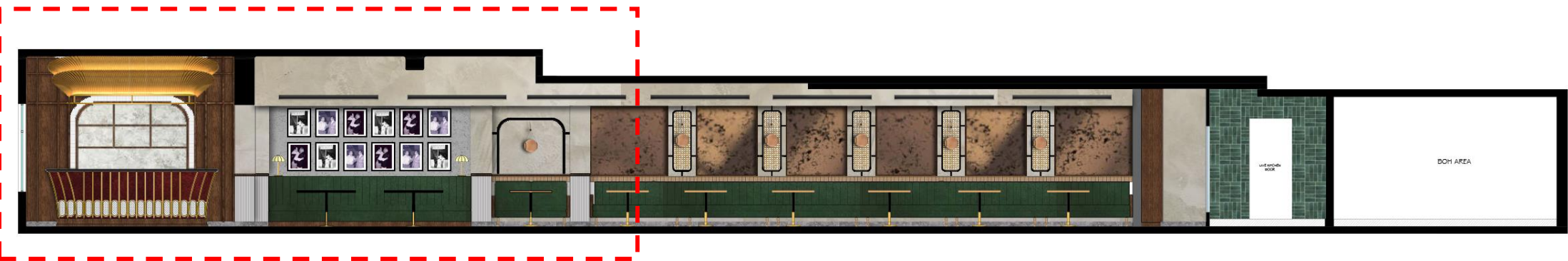
FACADE REFERENCE

## The Fluted WALL -

By incorporating the fluted mirror wall and wooden frame detail, the design seeks to add texture and dimension to the interior, while also reflecting the light and giving sense of openness, so the space looks larger.





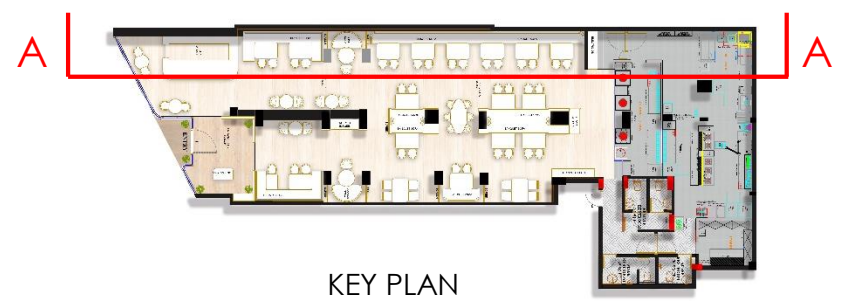


ELEVATION A-A



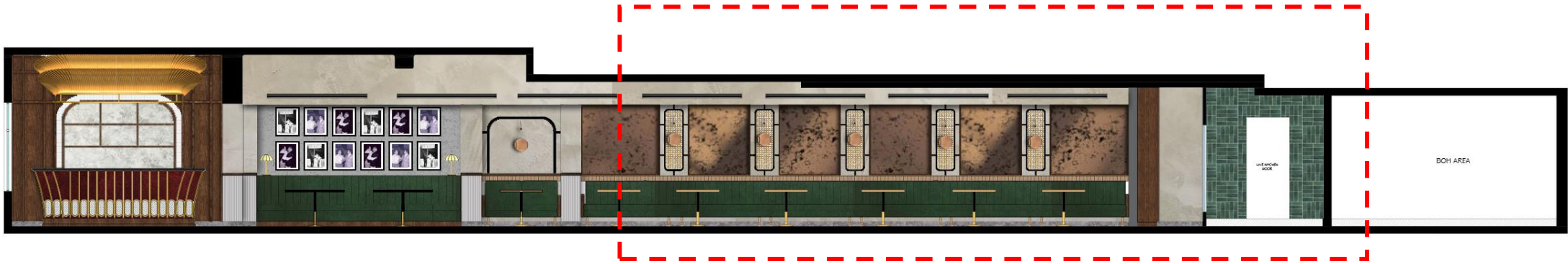
BAR COUNTER

STORY WALL

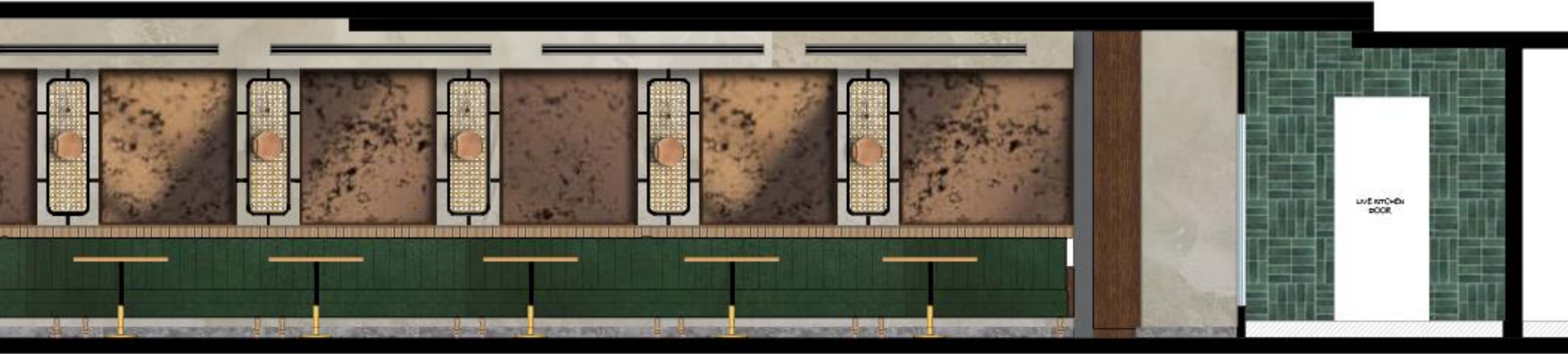


KEY PLAN



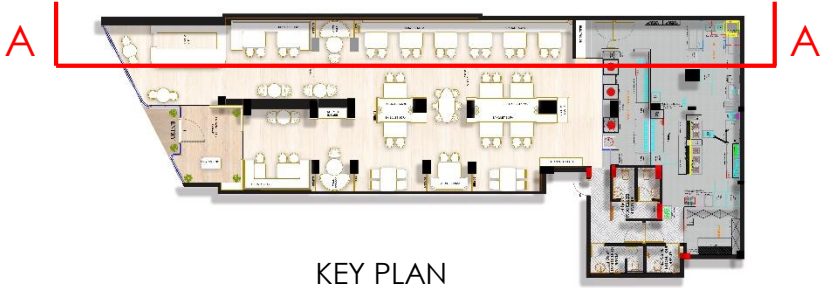


ELEVATION A-A



BANQUET SEATING

LIVE KITCHEN



KEY PLAN



SCREEN



BANQUET SEATING



WALL PANNELING



WALL LIGHT



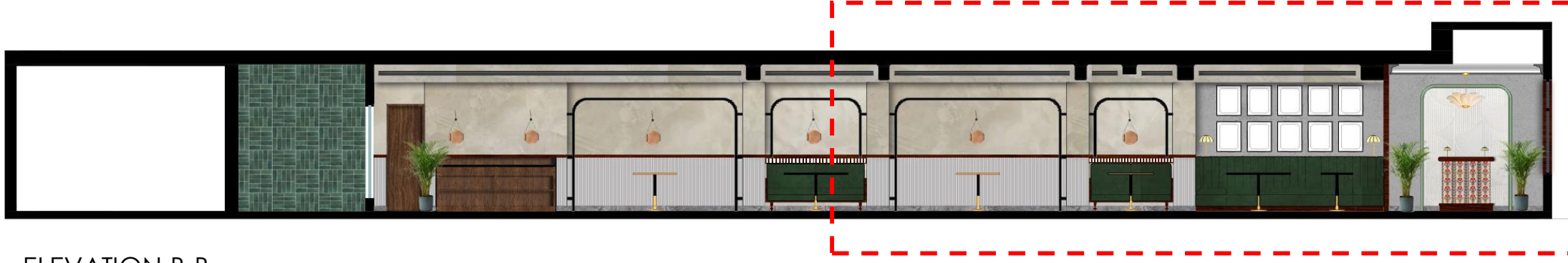
GREY WILLIAM



## The balance -

The balance between form and function, with an emphasis on creating a space that is both visually stunning and practical. The merger wall will serve as a unifying element that ties the entire interior together, creating a seamless and cohesive design that is both functional and visually appealing.





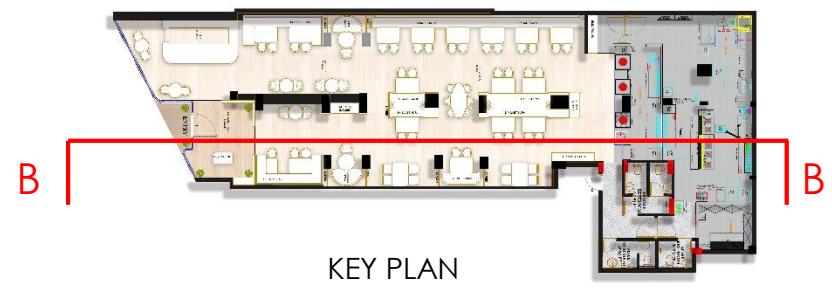
ELEVATION B-B



DINING AREA

STORY WALL

FOYER



KEY PLAN





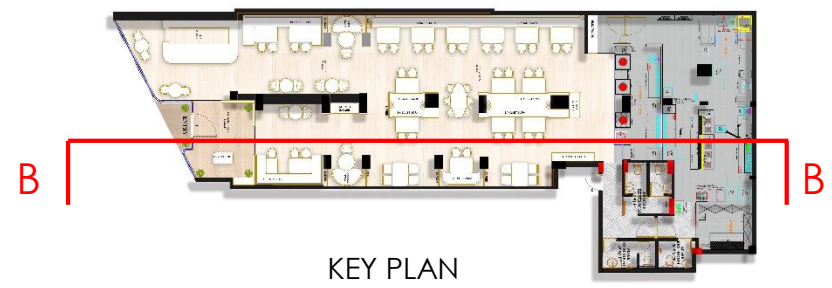
ELEVATION B-B



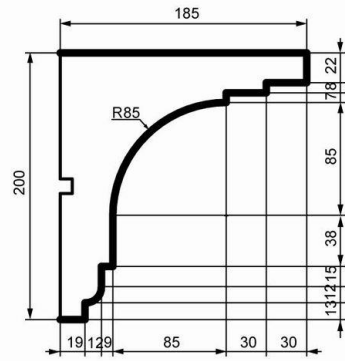
LIVE KITCHEN

SEVICE STATION

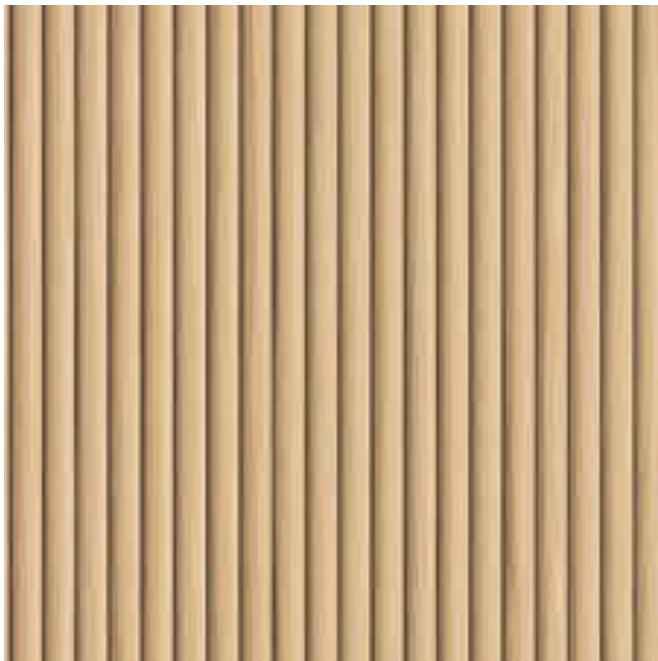
DINING AREA



KEY PLAN



POP MOLDING



WOODEN FLUTED PANEL

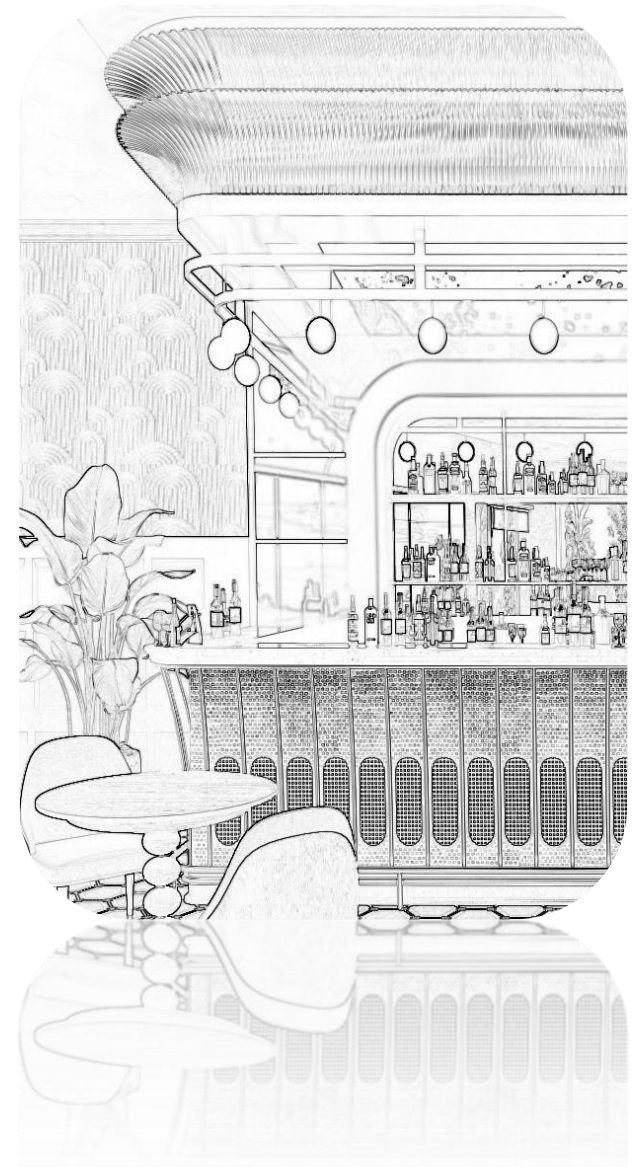


GREY WILLIAM



# The Bar -

The bar will feature intricate details such as ribbed ceilings, mirrored surfaces, and bold color schemes, paying homage to the Art Deco movement.

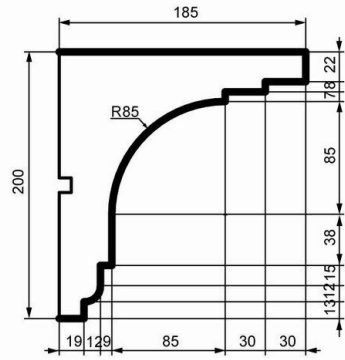






KEY PLAN





POP MOLDING



WALL LIGHT



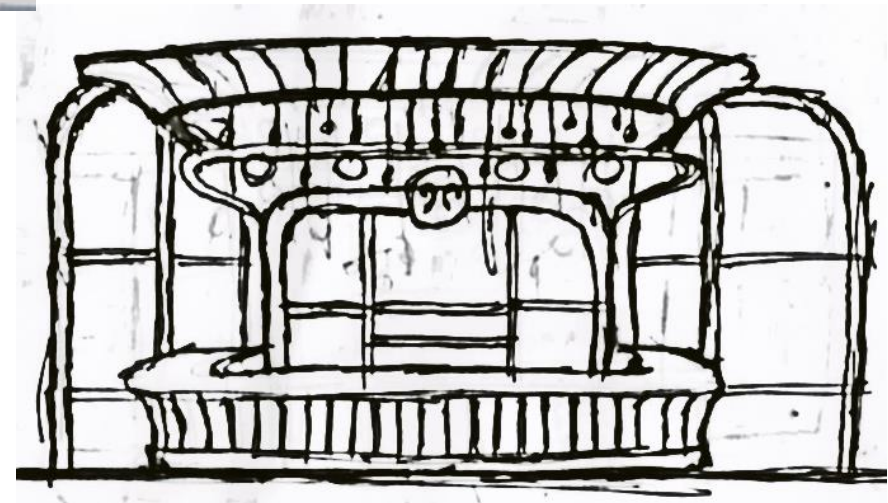
BAR COUNTER



RIBBED BULKHEAD

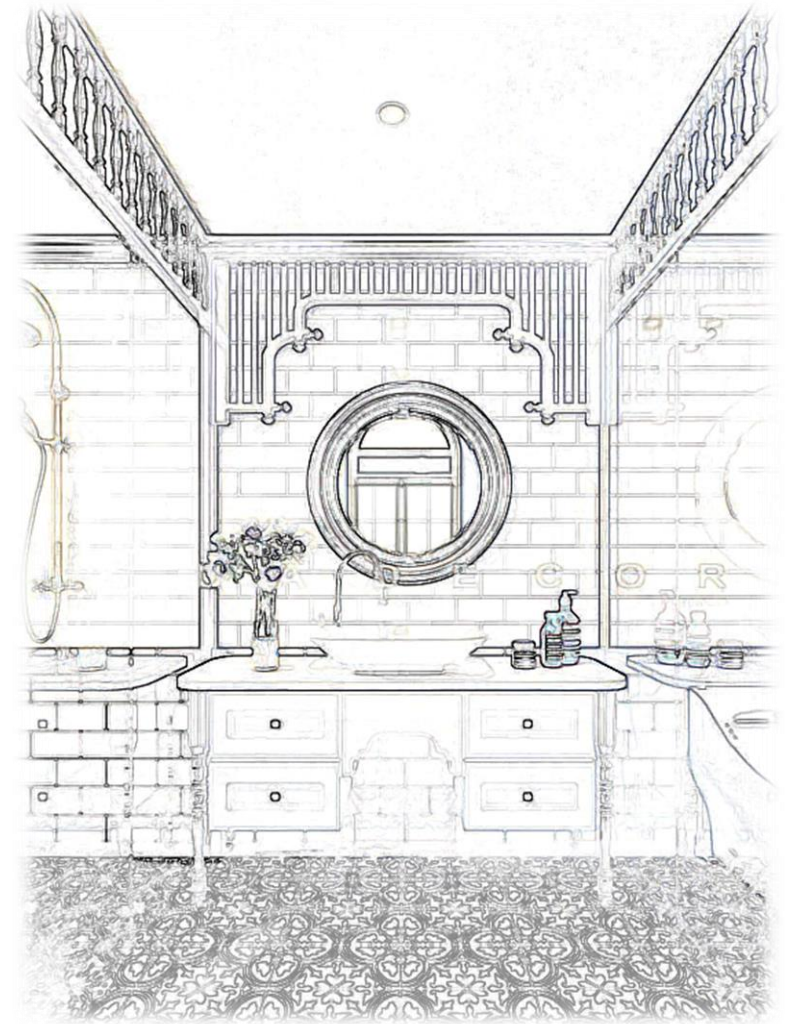


GREY WILLIAM



# RESTROOM -

The art deco toilet will be the focal point of the space, featuring sleek lines and geometric shapes that exude a sense of sophistication. The patterned tile will add depth and visual interest, while the wooden molding will provide warmth and richness to the overall design.



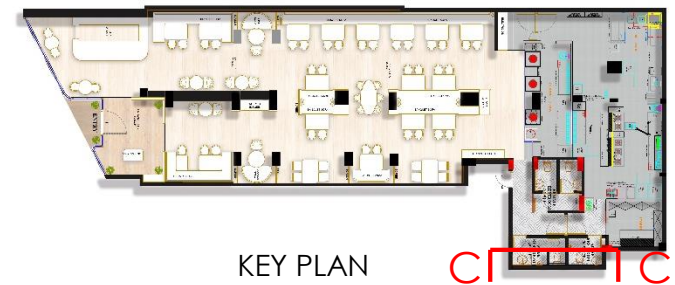




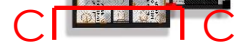
STAFF WASHROOM

MEN'S WASHROOM

ELEVATION C-C



KEY PLAN





# MOODBOARD FOR TOILET

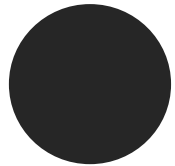
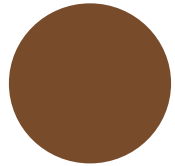
BASIC COUNTER

FLOOR

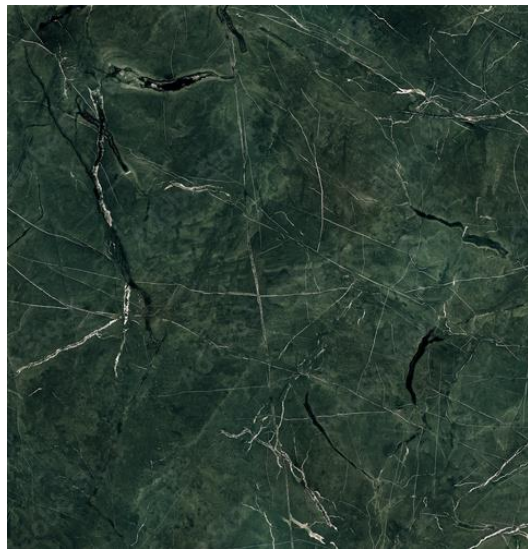
WALL LIGHT

PVC WALLPAPER

BALCK MARBLE



PLANTER



MARBLE



COLOUR PALETTE



THANK YOU